

SET BACK

10'-0"

10'-0"

40'

105'

4,200sf

16 pumps

Rally Market

925

ROUTE 109

West Babylon, NY

Presented Exclusively by

RC COMMERCIAL PARTNERS

powered by
RealtyConnectUSA



Investment
Summary



Market
Overview



The
Location



Trade Area



Development
Concept



Contact



Non-endorsed generic brand & development concept shown

CONFIDENTIALITY & DISCLAIMER

CONFIDENTIALITY

Realty Connect USA and/or Ron Epstein, (collectively and individually “the Agent”): All the information contained in this report and any related attachments, amendments and supplements (collectively hereinafter, the “Document”) is proprietary and strictly confidential. It is intended to be reviewed only by the party receiving it from the Agent and should not be made available to any other person or entity without the written consent of the Agent. This Document has been prepared to provide summary, unverified information to prospective purchasers, and to establish only a preliminary level of interest in the subject property.

DISCLAIMER

The information contained herein is not a substitute for a thorough due diligence investigation. Nothing contained anywhere in the Document constitutes investment, legal or tax advice. The information contained in the Document is based upon information considered by the Agent to be reliable; however, no representations or warranties are offered or implied about its authenticity, accuracy or completeness or the data or the assumptions, calculations, estimates, projections, valuations, conclusions, interpretation or application thereof for any purposes whatsoever. By reviewing the Document, you agree that you do so at your own discretion and Agent is not liable in any way and without limitation, directly or indirectly, for any errors or omissions, nor for any loss or damage arising from the use, misuse, inability to use or understand, or for the reliance upon any information contained in the Document. Investment in the properties or other investments referred to in the Document carries a high degree of risk, including loss of principal and should not constitute the sole or main investment of any investment portfolio. Past performance is no guarantee of future results. The value of any investment can decrease or increase and may be affected by a wide array of market conditions, such as fluctuations in interest rates, perceived market values and valuations, property yields and other factors.

The Agent has not verified, and will not verify, any of the information contained herein, nor has the Agent conducted any investigation regarding these matters and makes no warranty or representation whatsoever regarding the accuracy or completeness of the information provided. All potential buyers must take appropriate measures to verify all of the information set forth herein. The Agent is not affiliated with, sponsored by, or endorsed by any commercial tenant or lessee identified in this marketing package. The presence of any corporation’s logo or name is not intended to indicate or imply affiliation with, or sponsorship or endorsement by, said corporation of the Agent, its affiliates or subsidiaries, or any agent, product, service, or commercial listing of the Agent, and is solely included for the purpose of providing tenant lessee information about this listing to prospective customers.

SPECIAL COVID-19 NOTICE

All potential buyers are strongly advised to take advantage of their opportunities and obligations to conduct thorough due diligence and seek expert opinions as they may deem necessary, especially given the unpredictable changes resulting from the continuing COVID-19 pandemic. The Agent has not been retained to perform, and cannot conduct, due diligence on behalf of any prospective purchaser. the Agent’s principal expertise is in marketing investment properties and acting as intermediaries between buyers and sellers. The Agent and its investment professionals cannot and will not act as lawyers, accountants, contractors, or engineers. All potential buyers are admonished and advised to engage other professionals on legal issues, tax, regulatory, financial, and accounting matters, and for questions involving the property’s physical condition or financial outlook. Projections and pro forma financial statements are not guarantees and, given the potential volatility created by COVID-19, all potential buyers should be comfortable with and rely solely on their own projections, analyses, and decision-making.)





INVESTMENT SUMMARY



925 Route 109
West Babylon NY

.88AC LAND ZONED E-BUSINESS FOR SALE OR GROUND LEASE

- **38,330** sf (.88 ac)
- Corner property with **400'** frontage on Route 109
- Relentless exposure to **30,500** vpd
- Zoned **E-Business**

PRICE

Sale: **\$849,000**

Ground Lease: **\$60,000**

EXCLUSIVE AGENT

Ron Epstein

Associate Broker

RC Commercial Partners

35 Arkay Drive • Hauppauge NY 11788

ron@ronepstein.com

(631) 870-7180

RC COMMERCIAL PARTNERS

powered by
RealtyConnectUSA



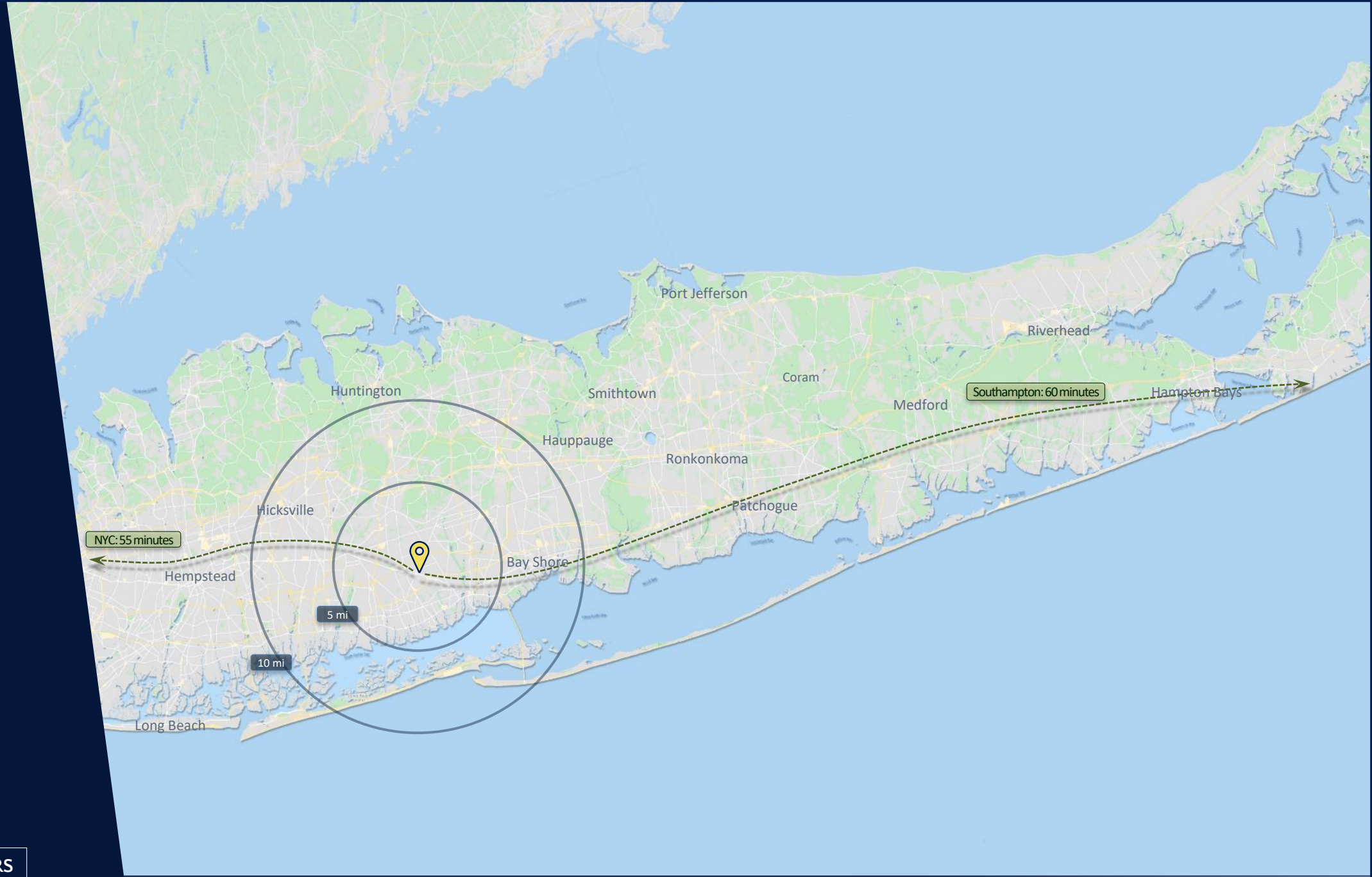
MARKET OVERVIEW



925 Route 109
West Babylon NY

MARKET OVERVIEW

Long Island



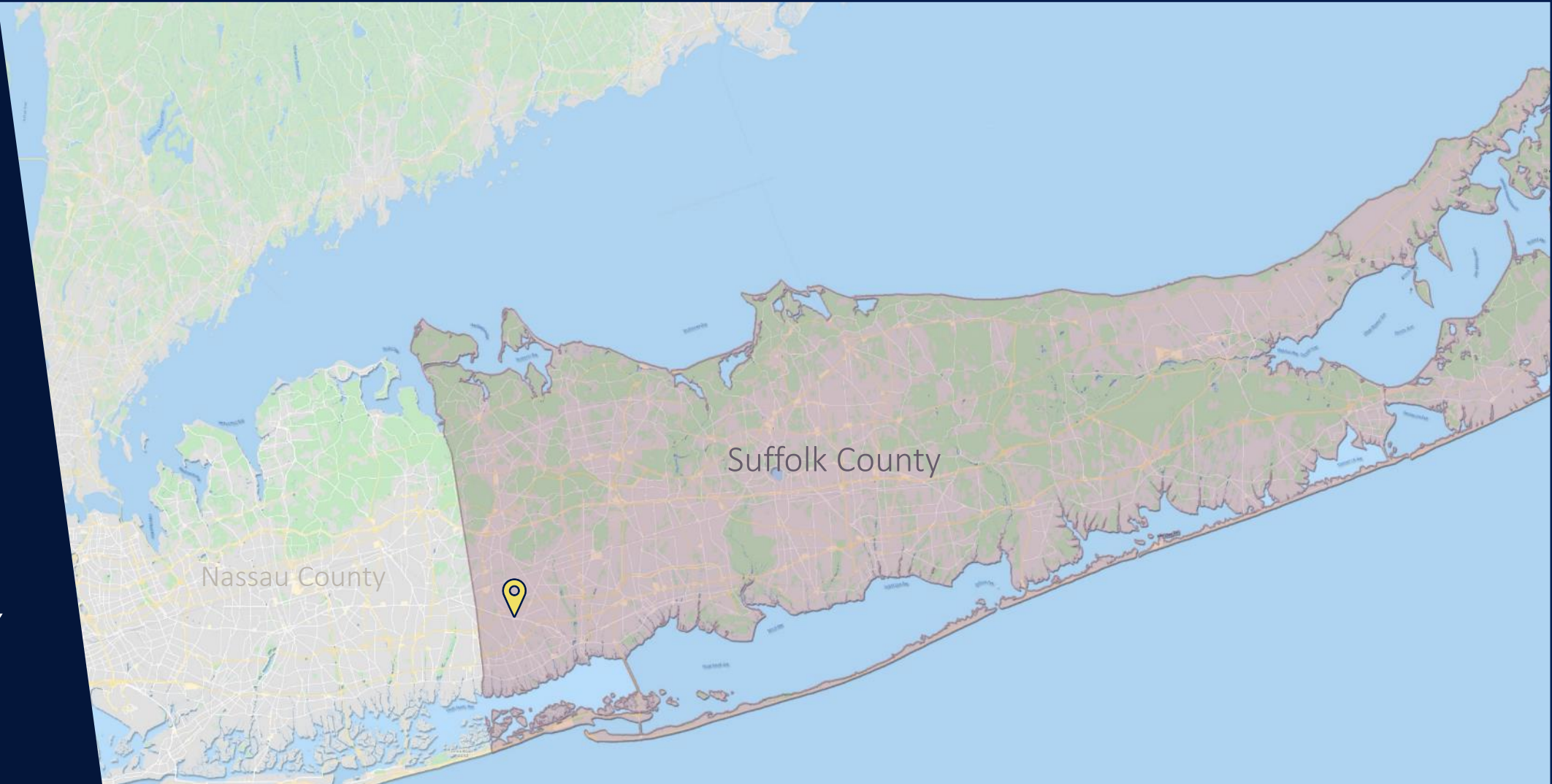
RC COMMERCIAL PARTNERS
powered by
RealtyConnectUSA

- Investment Summary
- Market Overview
- The Location
- Trade Area
- Development Concept
- Contact
-

925 Route 109
West Babylon NY

MARKET OVERVIEW

Suffolk County



SUFFOLK COUNTY is situated at the eastern part of Long Island, being 2nd largest in New York State by area and 4th largest in population, being part of the New York City MSA. Emerging as a global leader in biomedical engineering with world-class institutions like **Cold Spring Harbor Labs**, **Stonybrook University** and **Brookhaven National Laboratory**, which has recently been selected by the US Department of Energy for its new **Electron-Ion Super-Collider**, cementing Suffolk County's position as America's "**BioTech Valley**" It also enjoys a burgeoning wine region as well as its celebrated beach communities, including Fire Island, Ocean Beach, and the Hamptons and Montauk on the east end. Forbes magazine named Suffolk County in its list of the top 25 richest counties in America with an estimated average household income exceeding \$132,000.

RC COMMERCIAL PARTNERS

powered by
RealtyConnectUSA



Investment
Summary



Market
Overview



The
Location



Trade Area



Development
Concept



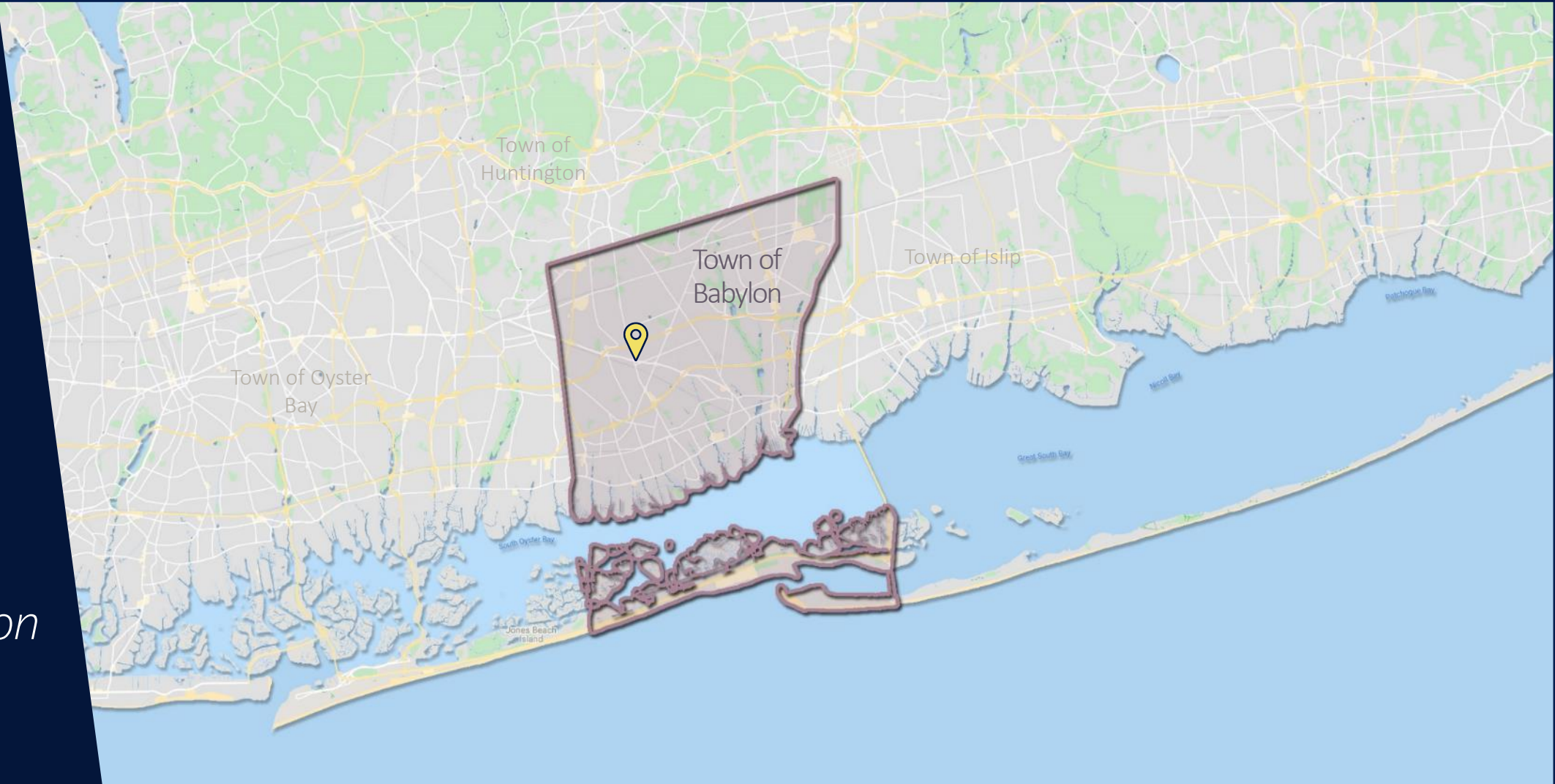
Contact



925 Route 109
West Babylon NY

MARKET OVERVIEW

Town of Babylon



The **Town of Babylon** is the **most densely** populated township in Suffolk County with **4,030** people per square mile. Its total population is 213,603, with an average of 2.87 persons living in 74,233 households. Many of Long Island's celebrated beaches, including **Jones Beach Island**, **Captree** and **Fire Island** are in Babylon on the Atlantic Ocean to the south. It is ~30 miles from **Manhattan**, with a direct 58-minute connection on the Long Island Railroad from the Babylon station.

The median family income is **\$79,545**, with some 53% of its households boasting an annual income of more than \$75,000. The town's diversity is ~72% white, ~16% African-American, ~16% Hispanic, and ~3% Asian

Among Babylon's 13 incorporated villages is **West Babylon**, where the subject property is located. It is Babylon's largest hamlet with a population of 43,253 people within it's 7.7 square miles. The median family income is **\$82,178**.

RC COMMERCIAL PARTNERS
powered by
RealtyConnectUSA

 Investment Summary

 Market Overview

 The Location

 Trade Area

 Development Concept

 Contact



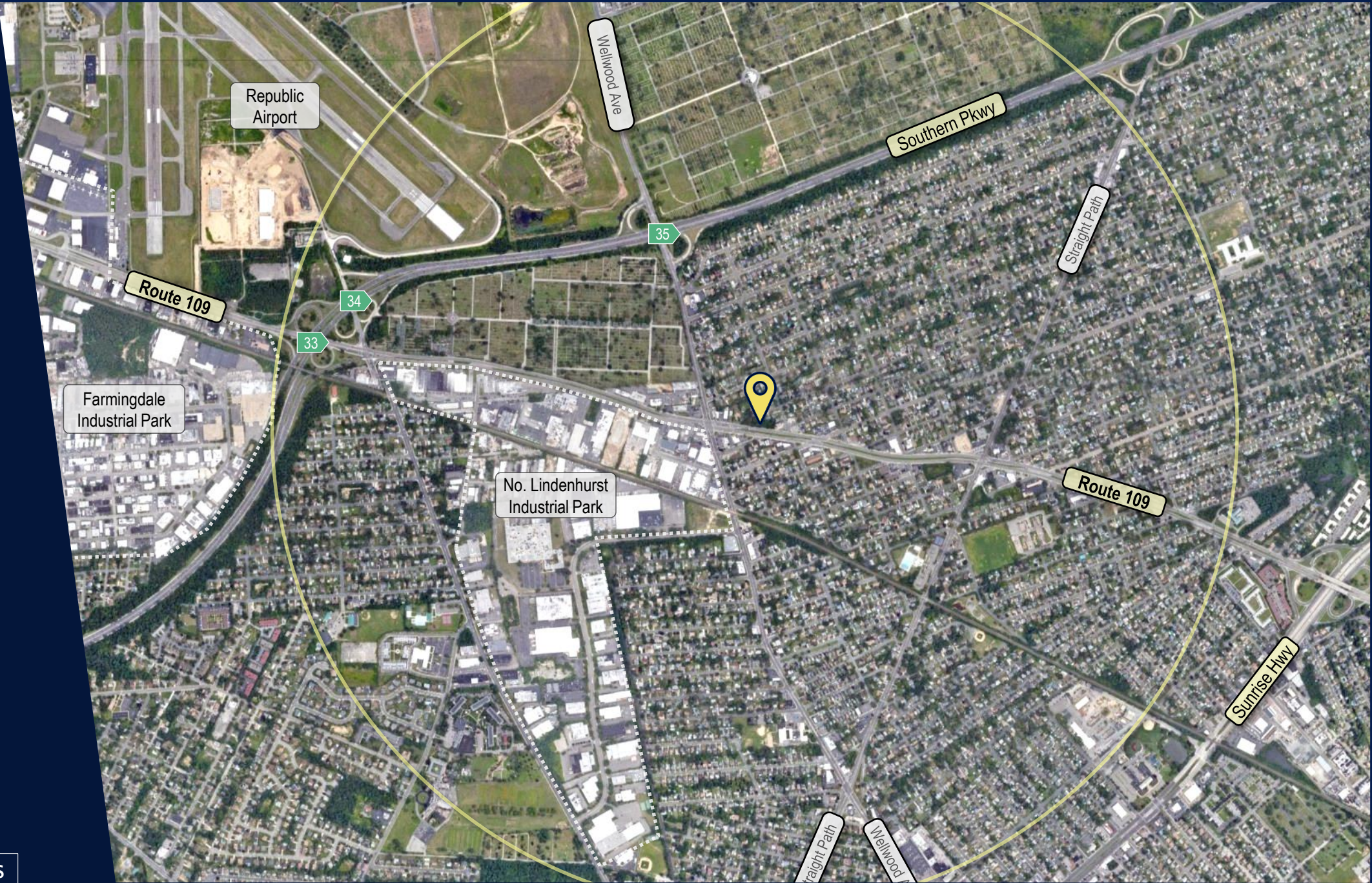


LOCATION



925 Route 109
West Babylon NY

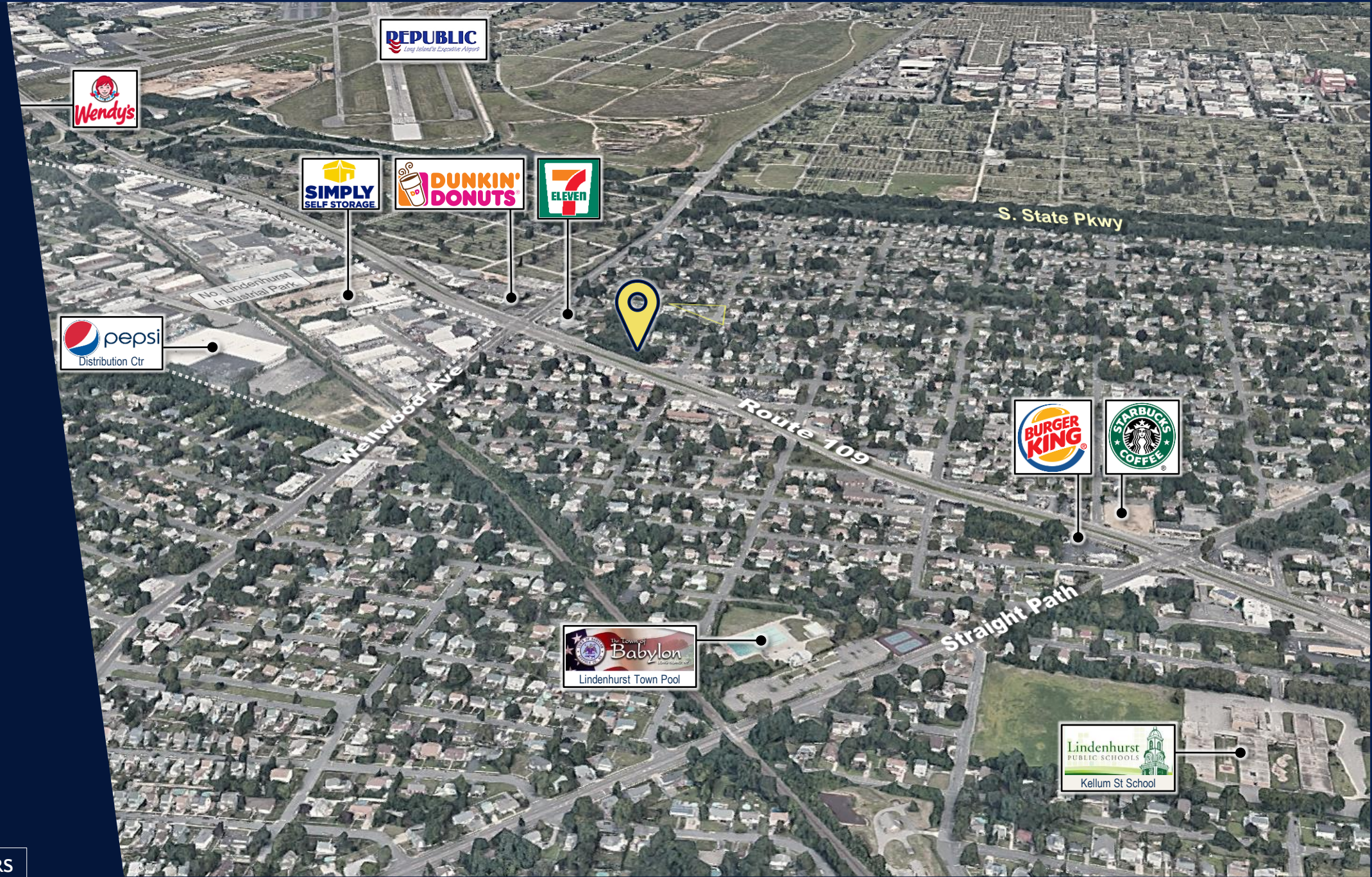
LOCATION
1-Mile Radius



925 Route 109
West Babylon NY

LOCATION

Business Environment



RC COMMERCIAL PARTNERS

powered by RealtyConnectUSA

Investment Summary

Market Overview

The Location

Trade Area

Development Concept

Contact

Click to View Location



925 Route 109 is located on the "morning side" of the street, highly visible and easily accessible to more than 30,000 vehicles per day. This is the "last chance" gas and coffee stop for those heading to work at local industrial parks and commuters heading to the Southern State Parkway

925 Route 109
West Babylon NY

LOCATION

Proposed Site
Development




RC COMMERCIAL PARTNERS

powered by
RealtyConnectUSA

 Investment Summary

 Market Overview

 The Location

 Trade Area

 Development Concept

 Contact

 Click to View Location





TRADE AREA



925 Route 109
West Babylon NY

TRADE AREA

3 Minute Drivetime



Population

Total Population: 16,182
Daytime Population: 13,934



Household Income

Total Households: 5,052
Median HH Income: \$90,813
Average HH Income: \$109,160

RC COMMERCIAL PARTNERS

powered by
RealtyConnectUSA



Investment
Summary



Market
Overview



The
Location



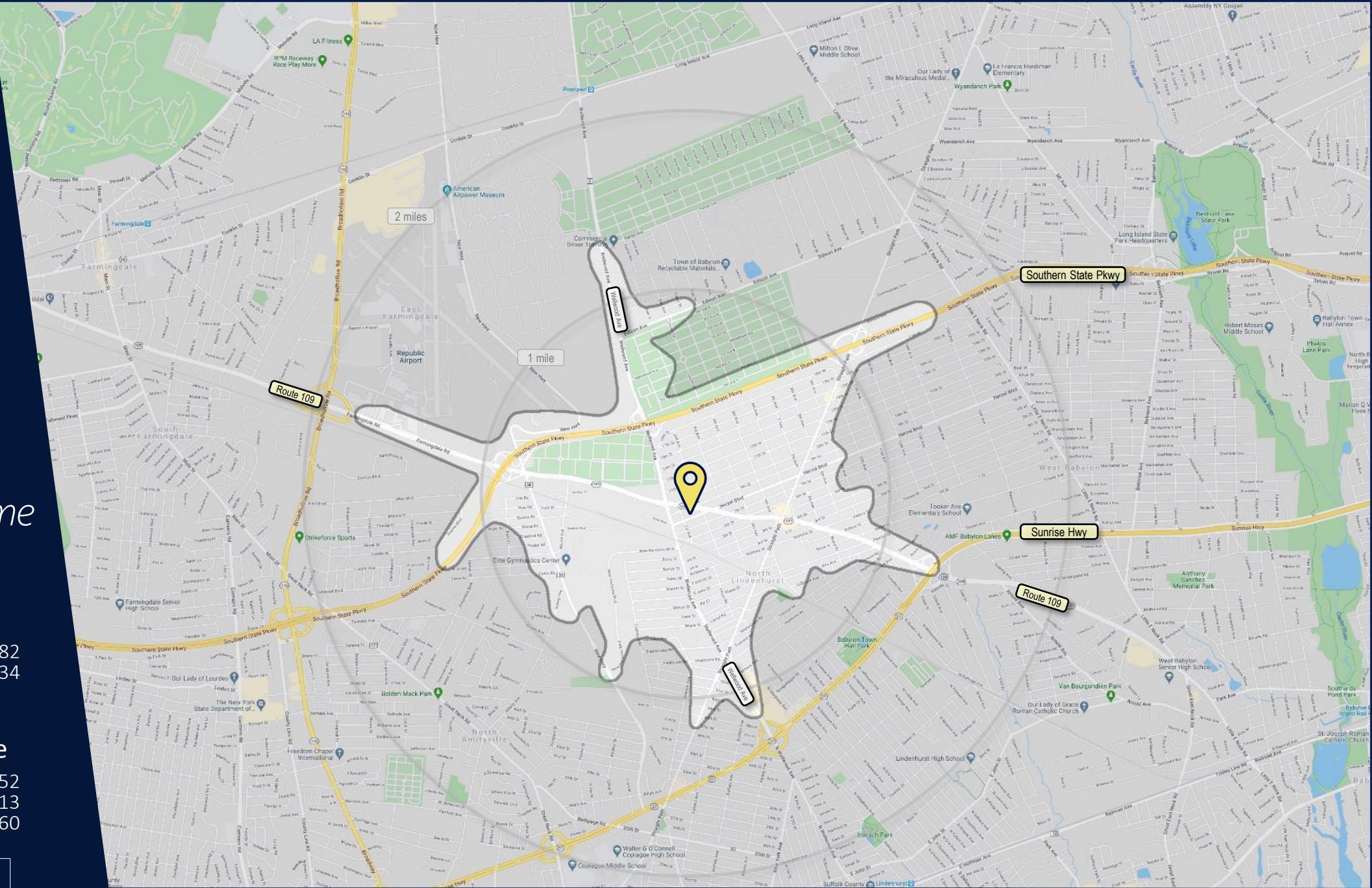
Trade Area



Development
Concept



Contact



925 Route 109
West Babylon NY

TRADE AREA

5 Minute Drivetime



Population

Total Population: 57,851
Daytime Population: 60,548



Household Income

Total Households: 17,831
Median HH Income: \$87,968
Average HH Income: \$107,380

RC COMMERCIAL PARTNERS

powered by
RealtyConnectUSA



Investment
Summary



Market
Overview



The
Location



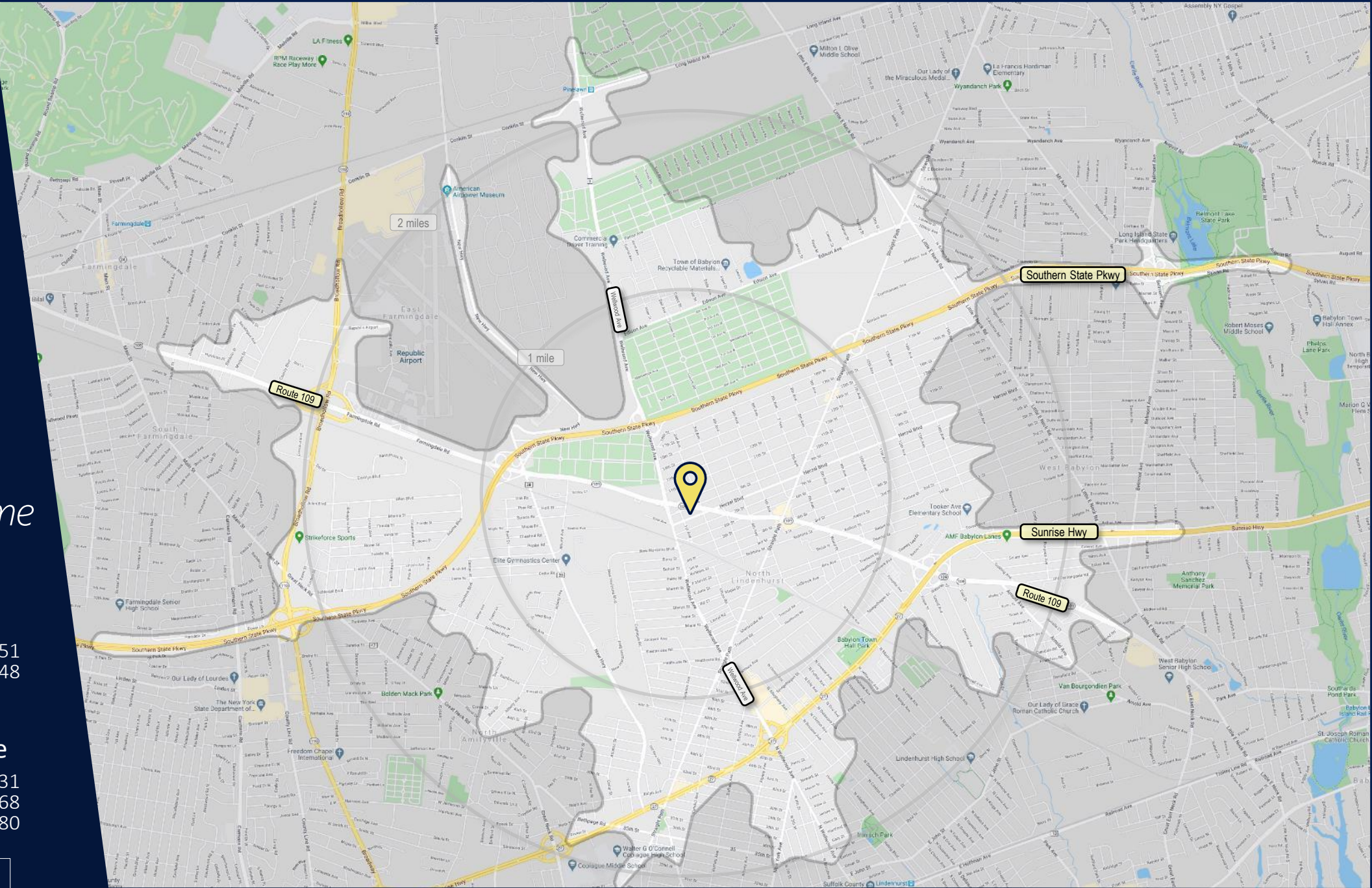
Trade Area



Development
Concept

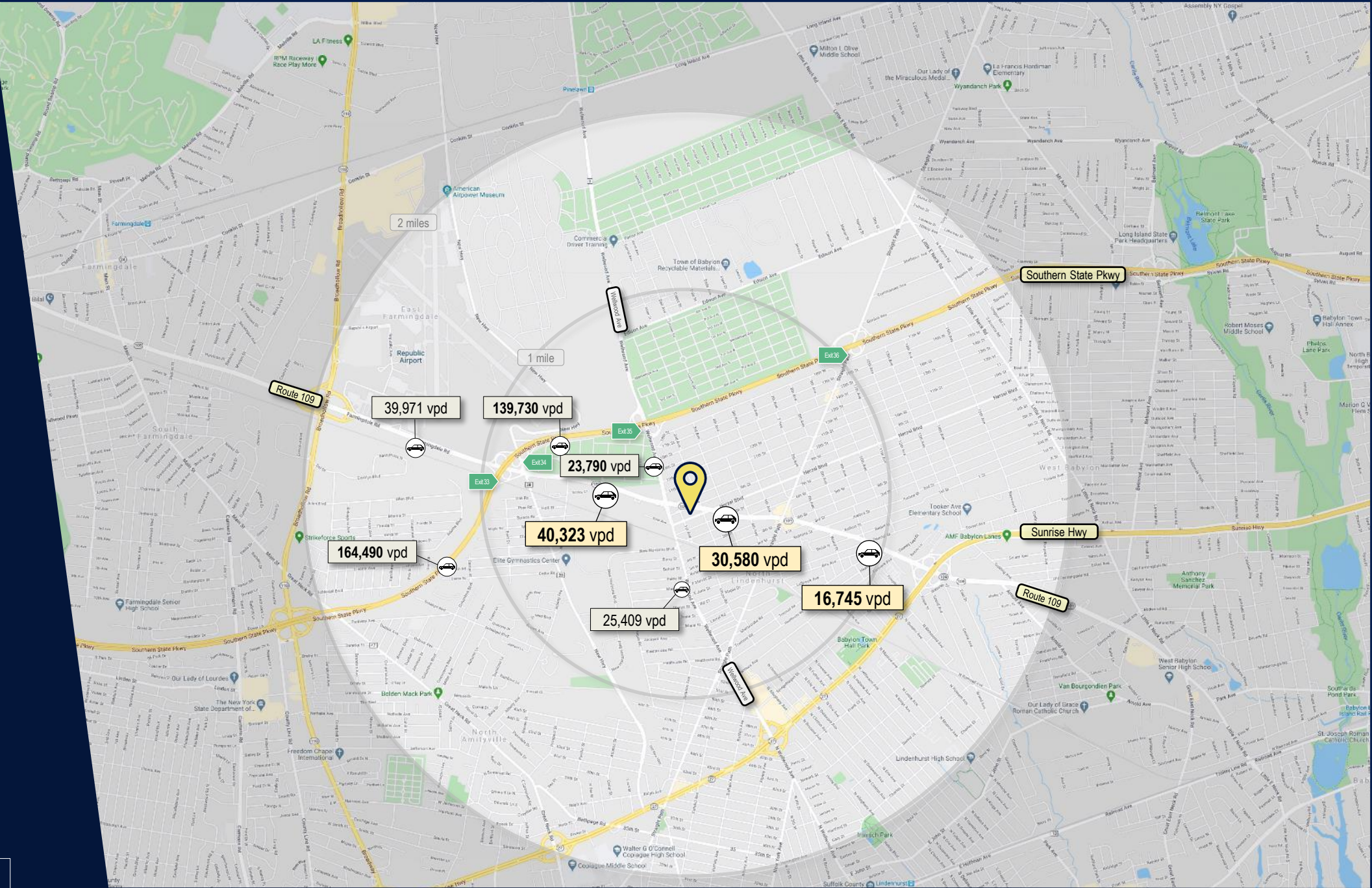


Contact



925 Route 109
West Babylon NY

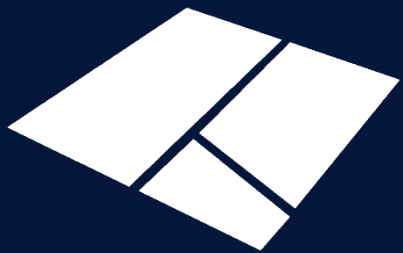
AADTC



Source: NYS Department of Transportation, 2020

RC COMMERCIAL PARTNERS
powered by RealtyConnectUSA

- Investment Summary
- Market Overview
- The Location
- Trade Area
- Development Concept
- Contact

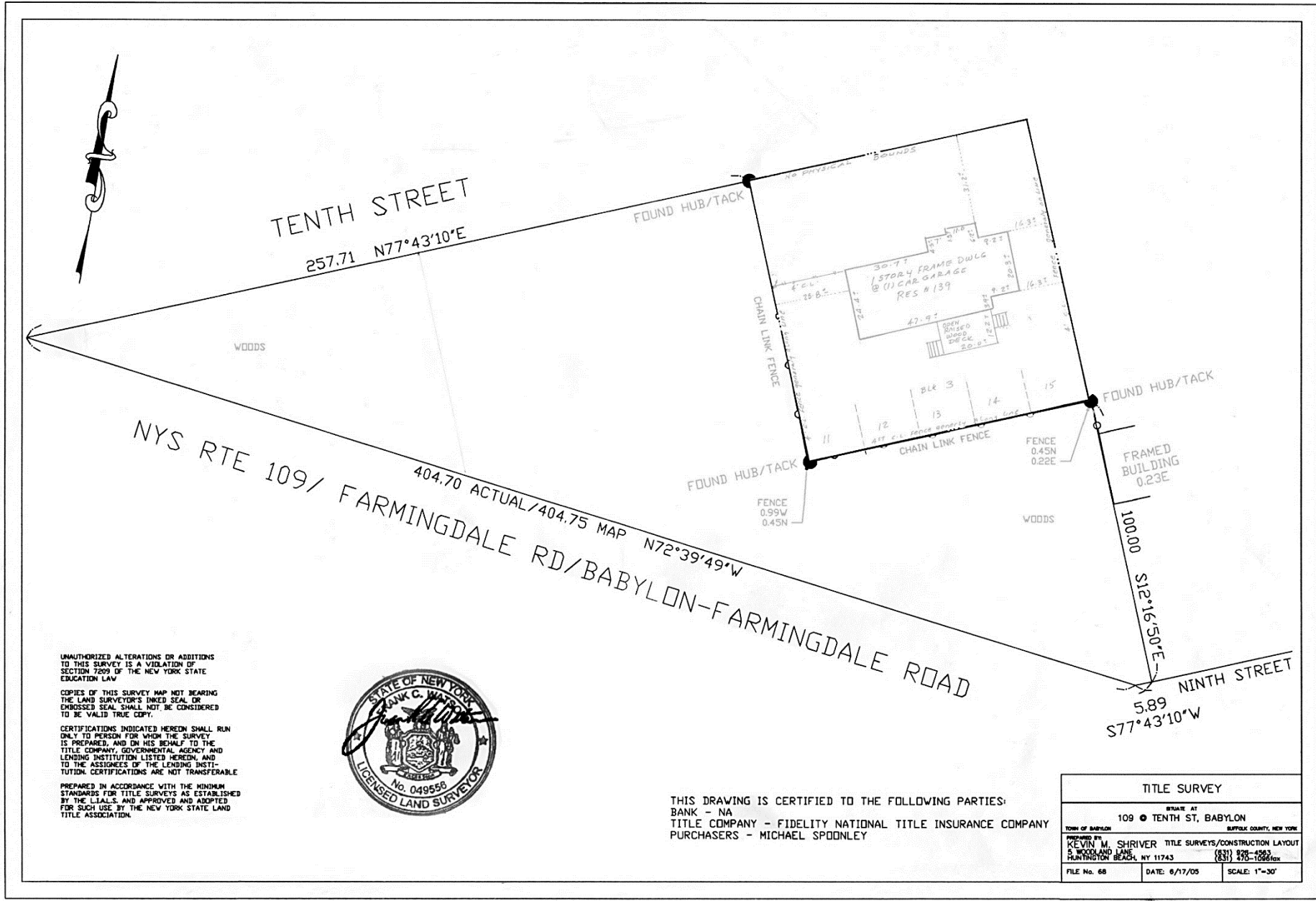


DEVELOPMENT CONCEPT



925 Route 109
West Babylon NY

PROPERTY Survey



UNAUTHORIZED ALTERATIONS OR ADDITIONS TO THIS SURVEY IS A VIOLATION OF SECTION 7209 OF THE NEW YORK STATE EDUCATION LAW

COPIES OF THIS SURVEY MAP NOT BEARING THE LAND SURVEYOR'S INKED SEAL OR ENGRAVED SEAL, SHALL NOT BE CONSIDERED TO BE VALID TRUE COPY.

CERTIFICATIONS INDICATED HEREIN SHALL RUN ONLY TO PERSON FOR WHOM THE SURVEY IS PREPARED, AND ON HIS BEHALF TO THE TITLE COMPANY, GOVERNMENTAL AGENCY AND LENDING INSTITUTION LISTED HEREIN, AND TO THE ASSIGNEES OF THE LENDING INSTITUTION. CERTIFICATIONS ARE NOT TRANSFERABLE

PREPARED IN ACCORDANCE WITH THE MINIMUM STANDARDS FOR TITLE SURVEYS AS ESTABLISHED BY THE L.L.A.S. AND APPROVED AND ADOPTED FOR SUCH USE BY THE NEW YORK STATE LAND TITLE ASSOCIATION.



THIS DRAWING IS CERTIFIED TO THE FOLLOWING PARTIES:
BANK - NA
TITLE COMPANY - FIDELITY NATIONAL TITLE INSURANCE COMPANY
PURCHASERS - MICHAEL SPOONLEY

TITLE SURVEY		
SITE AT 109 • TENTH ST, BABYLON		
TOWN OF BABYLON	SUFFOLK COUNTY, NEW YORK	
PREPARED BY KEVIN M. SHRIVER P. WOOD AND LANE PLANNING INC. BEACON, NY 11743	TITLE SURVEYS/CONSTRUCTION LAYOUT (831) 878-4552 (831) 878-1155 fax	
FILE No. 68	DATE: 6/17/05	SCALE: 1"=30'

Proposed development concept shown – not reviewed by municipal agencies

RC COMMERCIAL PARTNERS
powered by RealtyConnectUSA

- Investment Summary
- Market Overview
- The Location
- Trade Area
- Development Concept
- Contact

925 Route 109
West Babylon NY

PROPERTY

Development
Concept:

✓ Fuel & C-Store



Proposed development concept shown – not reviewed
by municipal agencies

RC COMMERCIAL PARTNERS

powered by
RealtyConnectUSA



Investment
Summary



Market
Overview



The
Location



Trade Area



Development
Concept



Contact



925 Route 109
West Babylon NY

PROPERTY

Rendering



925 Route 109
West Babylon NY

PROPERTY

Site Photos



925 Route 109
West Babylon NY

PROPERTY

Site Photos



RC COMMERCIAL PARTNERS

powered by
RealtyConnectUSA



Investment
Summary



Market
Overview



The
Location



Trade Area



Development
Concept



Contact



Click to
View
Location





CONTACT



925 Route 109
West Babylon NY

CONTACT

Exclusive Broker

Ron Epstein

Licensed Real Estate Broker

Associate Broker
RC Commercial Partners
repstein@rccommercialpartners.com
o: 631-870-7180 m: 516-815-2177
35 Arkay Drive, Ste 300 • Hauppauge NY 11788



Exceptional Real Estate Guidance®

RC COMMERCIAL PARTNERS

powered by
RealtyConnectUSA



Investment
Summary



Market
Overview



The
Location



Trade Area



Development
Concept



Contact