



Newsletter November 2023 in this issue

- ❖ **Presidents Message**
- ❖ **In My Garden**
- ❖ **Karens on Leave**
- ❖ **October Market Day Review**

Upcoming Events 2023

- ❖ **25th November Bring Back Native Tree Day**
- ❖ **9th December – Christmas Party**

President's Message

Hello folks,
I hope you are all well. The year is coming to a close with just one more meeting on the 25th at midday and then the Xmas party at my place on December 9th, also at midday.
We have got the results of our members survey and our program for next year will reflect those results.
Our November meeting will be a native tree bring back from the tube stocks distributed in the past and also a workshop with a Q&A session.
Nick and Noreen have put together some photos from their recent visit to Japan, so that should be interesting for us all.
We will be coming around getting numbers and the food sheet for the Xmas party. If you can't attend the meeting, but still want to come to the party, just let me know what you would like to bring.
See you all on Saturday 25th at midday.
Karen 🍷



Visit us at:

<http://redlandsbonsai.org> or <https://www.facebook.com/RedlandsBonsaiSociety>



In My Garden - November 2023

I've spoken regularly about the development process of 'binary cut and grow' where we allow a shoot to extend, before pruning it back hard to select two new shoots to repeat the process. The more apically dominant a species the more essential is the process. Conifers of course are the kings of apical dominance, which drives their natural single trunk, triangular, vertical growth posture/habit. We all know how Swampy just want to go up.

But the cut and grow is essential for most of our broadleaf species too. Think about the ubiquitous 'Clero' which likes to send out a shoot 3 or 400 mm before branching. You just have to prune it back to get branches where you want them for compact ramification.

For want of a better term the opposite of apical dominance is spontaneous branching, the production of side shoots without having to remove the apical bud or prune severely. In my experience such a characteristic is quite rare.

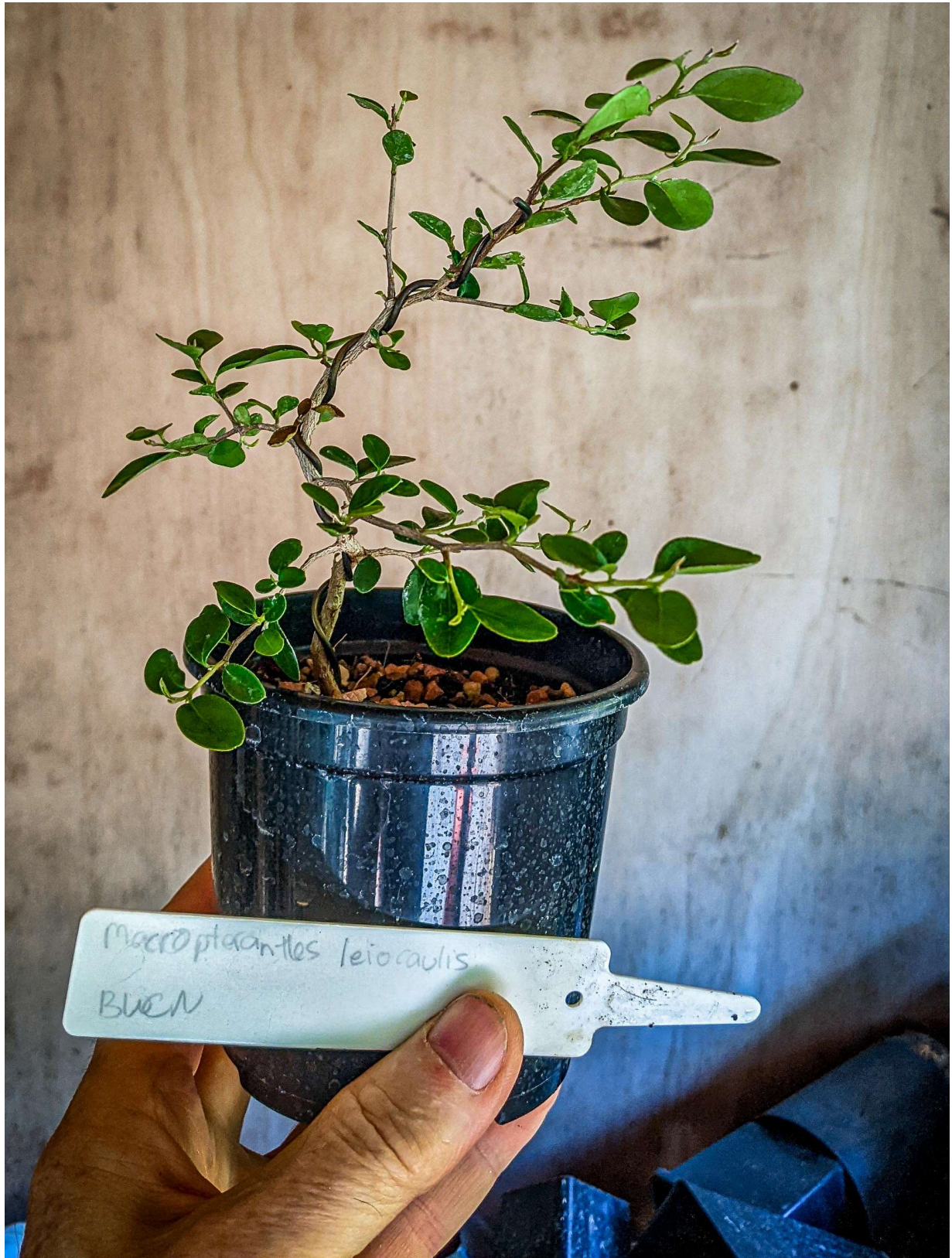
Macropteranthes leiocaulis (Smooth-barked bonewood) is a central Queensland tree that can grow to 25m which has the spontaneous branching characteristic. A couple of pictures of small plants of the species are attached to show its propensity to spontaneously produce branches at most leaf nodes. This makes it a dream for bonsai development with not much more than the occasional light tip prune needed to redirect the trees resource allocation. The icing on the cake is a random spiral 3D nodal pattern for naturalistic branch positioning. Could it get any better? Well yes it could, with a Goldilocks leaf size and internodal distance, not to mention flexibility.

A combination of these characteristics is quite unusual but from time to time we stumble on species we don't know and have to begin to evaluate them. If you find a species which as a small plant spontaneously branches I suggest you snap it up. You might have a winner on your hands.



Visit us at:

<http://redlandsbonsai.org> or <https://www.facebook.com/RedlandsBonsaiSociety>



Visit us at:

<http://redlandsbonsai.org> or <https://www.facebook.com/RedlandsBonsaiSociety>

REDLANDS BONSAI



Karen on leave in NZ

My Trip to New Zealand (north Island)

Hubby and I have just got back from 10 days travelling around in a motor home on the north Island of New Zealand. We had a great time and especially loved the Coromandel Peninsula. The winding cost line with narrow roads was a little scary in a 7.4 metre van but the scenery was amazing. The thing that was very interesting from a bonsai point of view were the abundance of *Metrosideros* trees, hanging vicariously from the cliff side and also the water side, with their huge trunks bent and twisted in weird directions from the winds. The roots are just hanging onto the cliff face, as if the very next land slip will send them crashing onto the road and cars.

From a distance these trees looked like they were full of white flowers but when you got closer, you could see that they were white flower buds waiting to burst open. The *Metrosideros* is also called the N.Z Christmas bush and I can see why, in a few weeks those millions of white buds will burst into the most magnificent red flowers and will be a magical sight to see just in time for Christmas. I have enclosed a couple of pics that I took.

Have a look for a tree of your own and you will not regret it. Great for bonsai.



Visit us at:

<http://redlandsbonsai.org> or <https://www.facebook.com/RedlandsBonsaiSociety>

REDLANDS BONSAI



Visit us at:

<http://redlandsbonsai.org> or <https://www.facebook.com/RedlandsBonsaiSociety>

REDLANDS BONSAI



October Market Day and Native display



Visit us at:

<http://redlandsbonsai.org> or <https://www.facebook.com/RedlandsBonsaiSociety>



Visit us at:

<http://redlandsbonsai.org> or <https://www.facebook.com/RedlandsBonsaiSociety>



Visit us at:

<http://redlandsbonsai.org> or <https://www.facebook.com/RedlandsBonsaiSociety>



Visit us at:

<http://redlandsbonsai.org> or <https://www.facebook.com/RedlandsBonsaiSociety>



Visit us at:

<http://redlandsbonsai.org> or <https://www.facebook.com/RedlandsBonsaiSociety>



Visit us at:

<http://redlandsbonsai.org> or <https://www.facebook.com/RedlandsBonsaiSociety>



36th AABC National Bonsai Convention
17th - 20th May 2024
Royal on the Park Hotel, Brisbane City

Bonsai Exhibition showcasing some of Queensland's best bonsai

Sales area for all of your bonsai needs - pots, tools, trees and more!



Workshops, masterclass and demonstrations with:
Koji Hiramatsu from Hiramatsu Shunshoen, Japan
Martin Walters - New Zealand
Andrew Sellman - Queensland
Lindsay & Glenis Bebb - Queensland

Visit Brisbane's biggest bonsai nursery & the new Bonsai House at the Botanical Gardens on our Friday Tour (lunch included)

Early Bird Rate \$270
ENDS 1ST NOV 2023

Book Your Convention Package Now!

For more information or to register visit:
www.bonsaisocietyqld.asn.au



Visit us at:

<http://redlandsbonsai.org> or <https://www.facebook.com/RedlandsBonsaiSociety>



RBS Meeting Protocol

Our meetings are held at the **Wellington Point Recreation Hall**, 347-371 Birkdale Rd, Wellington Point QLD 4160, unless otherwise noted. Our annual show is generally held at the Donald Simpson Centre in Bloomfield Street, Cleveland. You will find the yearly program on the last page of our newsletter. Watch this space for the 2023 program calendar or check out the website.

The hall will be open at 11am for members and visitors' meetings, with committee meetings to be held from 11am before each normal meeting.

Foundations Development Program

This is a course of 8 x 3hr lessons, please talk to Steve C if you wish to join in this program.

Learners' Group

The group is designed for informal tuition and coaching from 11am to 12:00 pm on meeting days when a demonstration or presentation is scheduled. Senior members will be available to offer advice and support. Please check program calendar at end of newsletter for dates.

Sign-in and Raffle

All members are required to sign in as they arrive. The sign in sheets are located on the front table as you enter the hall. If you don't want to sign into the meetings, please talk to one of the executive committee members.

There will be a raffle at each meeting and tickets are available for purchase at the sign in table.

Visit us at:

<http://redlandsbonsai.org> or <https://www.facebook.com/RedlandsBonsaiSociety>



Fees for 2023

Our membership fees for 2023 are \$25 for a single, \$35 for a family and we have removed the monthly \$2 entry fee.

- Fees are due in December for the following year
- New members who join the club in the first 6 months of the year pay full membership fees
- Members joining after 30 June pay half fees for that year, with full membership fees due in November for the following year.
- Any member who has not paid their fees by 31 January for that year will be deemed unfinancial and not eligible to exhibit in the annual show, sell products at the show or meetings or vote at the AGM.

Banking details for on-line renewals are:

Name: Redlands Bonsai Society Inc

BSB: 633000

Account Number: 169724416

Workshop Meetings

We aim to provide a number of workshop meetings throughout the year. These are great opportunities for people of all stages of their bonsai journey to come together, discuss and work on their trees. The more experienced members of the club are available to answer any questions and assist you in deciding the future style and care of your trees.

Remember advice will vary across the members, so weigh up the information and follow the advice you are most comfortable with...

Your Committee Members for 2023

President: Karen F.

Vice President: Heather L.

Treasurer: Nick J.

Secretary: Noreen C.

New member greeter: Julie B.

Newsletter: Rod C.

Member: Mel B.

Member: Julie B.

Member: Sandy C.

Visit us at:

<http://redlandsbonsai.org> or <https://www.facebook.com/RedlandsBonsaiSociety>



Member: Ryan M.

REDLANDS BONSAI SOCIETY - PROGRAM FOR 2023				
Month	Date	Day	Meetings and Workshops	Additional activities
January	28	Sat	Committee Meeting	11am
			Foster tree return / Show raffle tree rework with Steve	Learners group from 11am
February	25	Sat	Committee Meeting	11am
			AGM 2022/2023 Prep your trees for show / Workshop	From 12pm
March	25	Sat	Show Setup	
	26	Sun	Annual Show	
April	22	Sat	Committee Meeting	11am
			Forest trees bring back and forest making demo	From 1200
May	27	Sat	Committee Meeting	11am
			Talk on Minis with Tony Watt and arvo workshop	Learners group from 11am Meeting 12pm
June	24	Sat	Committee Meeting	11am
			Ugly Tree day Problem tree advice session	From 1200
July	22	Sat	Committee Meeting	11am
			Workshop / Deciduous tree wiring and pruning	Learners group from 11am Meeting 12pm
August	26	Sat	Committee Meeting	11am
			Jeff Bray from Gold Coast Tweed Club	From 1200
September	23	Sat	Committee Meeting	11am
			Leigh Taafe	Learners Group 11am
October	28	Sat	RBS Market Day	
November	25	Sat	Committee Meeting	11am
			Native Tree bring back and native workshop Q&A	From 12pm
December	9	Sat	Christmas Party	

Visit us at:

<http://redlandsbonsai.org> or <https://www.facebook.com/RedlandsBonsaiSociety>