

# Trailer Manufacturing System

*A Companion Product for AddonSoftware*



## MR Software Solutions

### Trailer Manufacturing System by Barista

MR Software Solutions' Trailer Manufacturing module is a companion product to the AddonSoftware Enterprise Resource Planning (ERP) system.

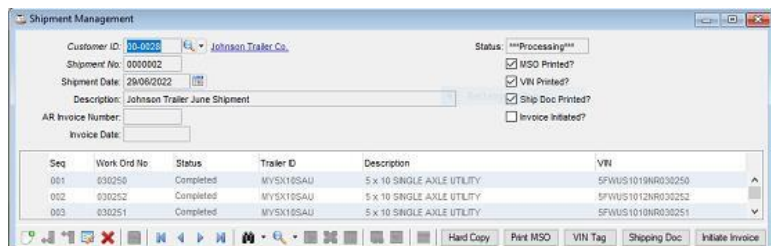
Combined with Addon's Accounting and Distribution Bundles, it provides an excellent solution for manufacturers requiring a system capable of generating quotes/work orders using predefined Bill of Materials (Trailer Master, Trailer Assembly, Trailer Options) and Templates for Cutting Steel.

Processing consists of creating and tracking the three types of work orders and using Shipment Management to complete getting the finished goods to the customer. Each task interfaces along the way with the AddonSoftware Modules to create customer quotes, as well as required shipping documents and customer invoices, all the while keeping your inventory availability up to date.

+1 (706) 770-6777

info@mrsoftwaresolutions.com

mrsoftwaresolutions.com



# Trailer Manufacturing System Features

Trailer work orders are retained after completion for historical uses. Quickly create new orders from an existing one.

Trailer Master form features appear in three tabs, Trailer Information, VIN Information and Trailer Detail.

Print MSOs, VIN Tags and Shipping Documents directly from Shipment Management.

Reports include:

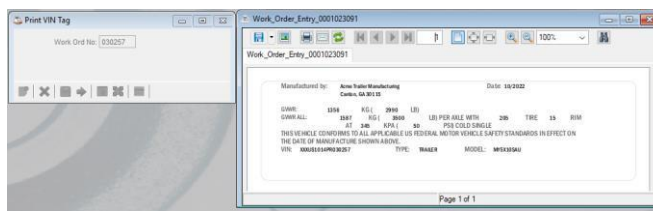
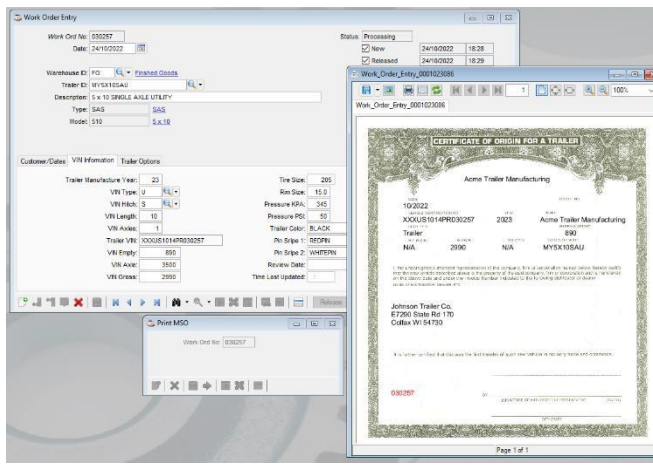
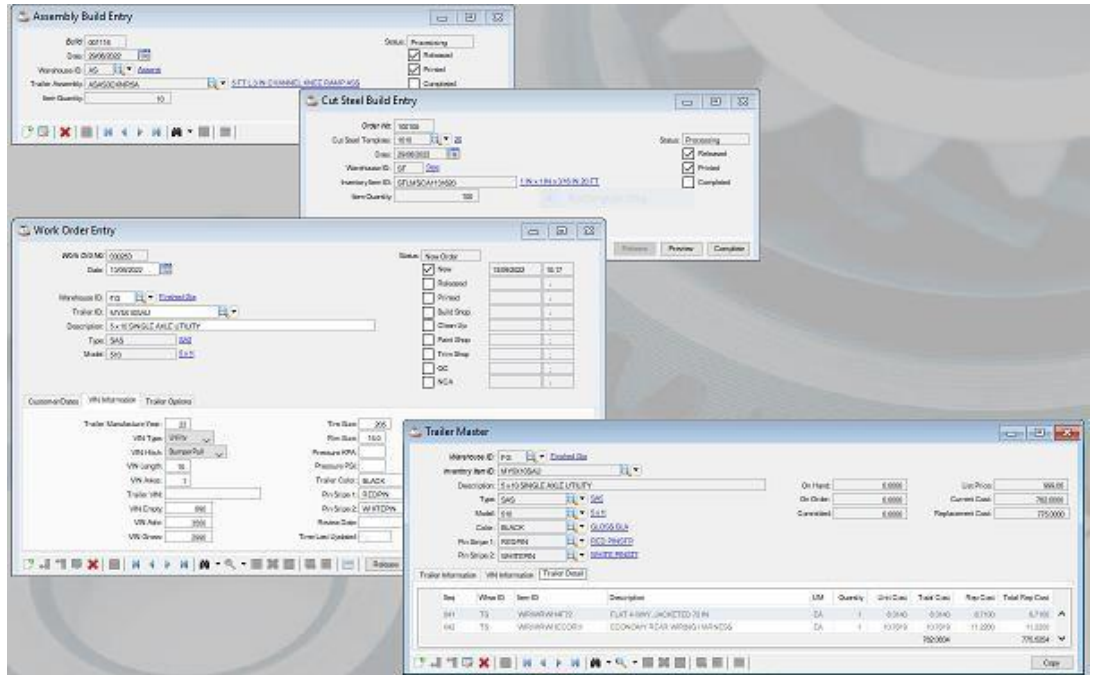
**Work Order Report...**  
Select and print work orders based on order number range and/or worker status.

**Assembly Orders Report...**  
Shows status for a range of assembly build orders.

**Cut Steel Orders Report...**  
Shows status for a range of cut steel orders.

**Shipments Status Report...**  
Shows status for all or a range of shipments.

**Trailer Report...**  
List of trailers pulled from the Trailer Master.



The Preview Button, on the all the work order entry forms, will generate a "traveler" for the respective order. These can then be output or emailed using Barista Document Processing.

Another great feature of the Trailer Manufacturing system is the **Initiate Invoice** button on the Shipment Management form. Once all the shipment tasks are completed you can use it to generate Invoicing data in the Addon Order Processing module.

Like all the AddonSoftware Modules the Trailer Manufacturing Module has **context sensitive help**.

# Trailer Manufacturing Shop Floor Control Features

Multi-warehouse capable

Serial/Lot inventory

Planned and quoted Work Order entry

Built-in email/fax output

Graphical planning and scheduling calendars

Bottleneck Analysis Report

Labor Efficiency Report

Committed Materials Report

The MR Software Solutions **Trailer Manufacturing** module is an ideal solution for any type of trailer manufacturing, make-to-stock, make-to-order, or mixed-mode, providing accurate tracking of work in process, streamlined scheduling, and excellent tracking of manufacturing costs. The Trailer Manufacturing bundle includes Bills of Materials for Trailers, Assemblies and Cut Steel Templates and is fully integrated with the complete AddonSoftware Accounting and Distribution modules.

Trailer Manufacturing provides multiple warehouses with costs, prices, buying, replenishment, and item history by warehouse. It includes complete lot/serial number tracking throughout the manufacturing and distribution process and the output of reports, sales invoices, customer statements, vendor POs, etc., via e-mail or fax, or output in HTML or Adobe® PDF format at any time.

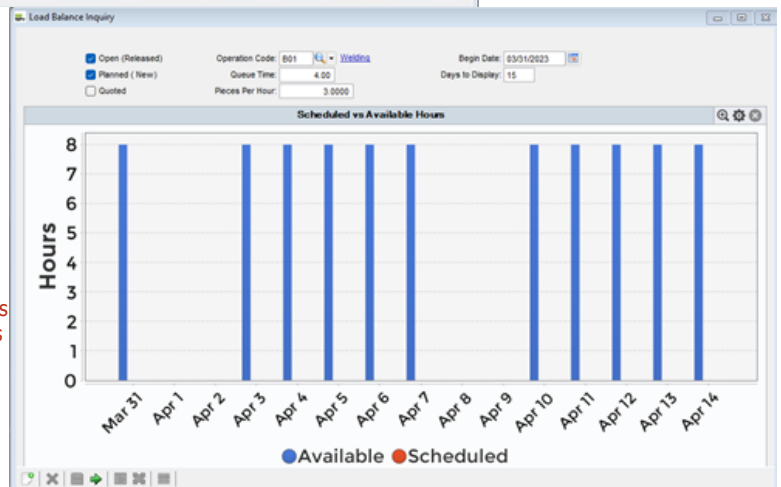
The **Shop Floor Control** module uses work orders to collect, store, track, and report the costs of material, labor, overhead, and outside purchases relating to the manufacture of an item or batch of items. The module is fully integrated, and information automatically flows into other application modules including Bill of Materials, Inventory Control, and Purchase and Sales Order Processing. Work order history is preserved indefinitely by manufactured part number and transaction.

Component Shortages

Work Order No: 027000 TRAILER STD UTILITY 4 X 8 L R

Item ID	Description	Required	On Hand	Committed	Available	On-Order
CP04-75	PIPE 4" SCHED 40 BLACK BUSHING HINGE LARGED	2,000	5,715,000	64,000	9,655,000	0.0000
CP08-75	PIPE 8" SCH 40 75'X10' (HANG)	2,000	64,000	64,000	0.0000	0.0000
CR05-50	ROD 3/4" X 50'X10' (LATCH)	4,000	120,000	0.0000	0.0000	0.0000
FW02-08-150	PINE TREATED 2" x 8" x 15'	8,000	288,000	0.0000	0.0000	0.0000
HW-001	SCREW WOOD'S 1/8" X 1 1/2" - 40# FLOOR BOARD	40,000	1,200,000	0.0000	0.0000	0.0000
IS-7500-35	COLOR SPRING 30# HP 30" 75'X 30'	1,000	32,000	0.0000	0.0000	0.0000
SP08-10	SPRING HARNES FOR 8" x 10" TRAILER	1,000	32,000	0.0000	0.0000	0.0000
L1-001	LIGHT RED LED 2" - ROUND (TAL LIGHT)	2,000	64,000	0.0000	0.0000	0.0000
L1-002	LIGHT LICENSE PLATE - MINI LED WHITE	2,000	64,000	0.0000	0.0000	0.0000
TR001	TRENCH W/SHOULDER	2,000	64,000	0.0000	0.0000	0.0000
J-000	JACK PUMP 20" PIPE MOUNT	1,000	24,000	0.0000	0.0000	0.0000
AS1-001	ASST WHEEL PIPE - 200'X10'X18" X 6" S&S	2,000	9,855,000	64,000	9,760,000	0.0000
AS1-003	ASSEMBLY W/CH STD UTILITY	1,000	9,855,000	32,000	9,827,000	0.0000
AK2000-01	AXLE 2000 LBS 40# SPRING	1,000	22,000	14,000	9,000	0.0000
PA-BLACK	PAINT BLACK STD	5,000	12,700	9,700	2,900	0.0000
PR03TRPE-WHITE	Roll Printing Ppr Sheet 1 1/2" x 1 1/4" x 32' R White	1,000	75,000	26,000	101,000	0.0000

Work Order function incorporates a grid that highlights any shortages



Load Balance Inquiry presents real-time filtering and graphics charting

Contact your AddonSoftware reseller or call us at:

+1 (706) 770-6777

