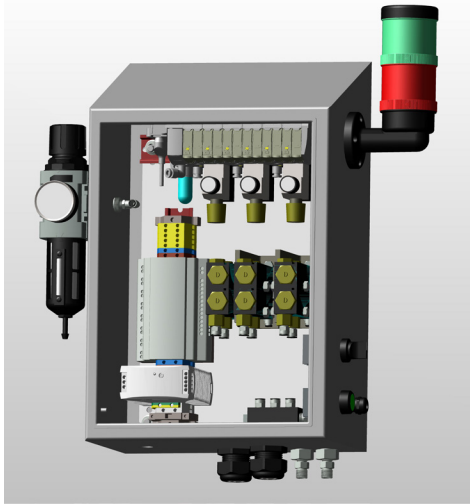


## Chiller Chain Oiler

### Automatic 6-Point Lubricating System

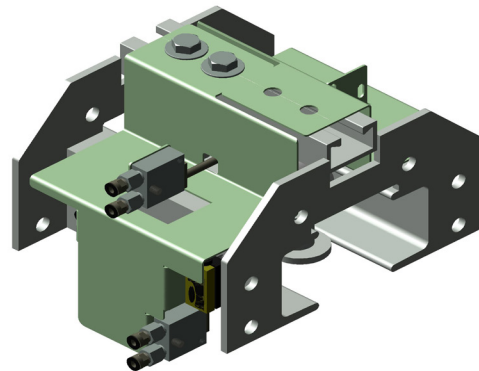
#### Genuine Optimized Lubricant Delivery



GOLD has designed a complete turnkey spray system using our modular positive displacement packages. The system comes complete with control cabinet, pumps, solenoids, logic controls, low-level switched reservoir, and status lights. The system is accompanied by client specific brackets. All items are 304 stainless steel and are designed to spray a wide range of lubricants.

#### Performance Features:

- Simple push-button operation
- System produces ultra-fine, even surface coating
- Self-priming and double checked ensure no dripping



1. Accurately delivers a fine coating to surfaces
2. Reduces fluid consumption
3. Six discrete precision nozzles
4. Lighted status indicators
5. Precision positive displacement pumps
6. Discrete control of atomization air
7. Beam specific bolt-on brackets
8. Diffuse-beam (visible) RED laser

#### Solution Summary:



Part No.	GCSOLS06XXC
Availability	6-8 Weeks
Typical Install Time	1 Day
Number of Lube Points	Six
Lubrication Intervals	Timer or Logic Controlled (Adjustable by Client)
Recommended Lubes	JAX Magna-Plate
Power Requirements	115 VAC 60Hz
Air Requirements	60 psi @ 1 CFM
Recommended Maintenance	Replace solenoid annually Inspect system periodically

#### Configuration:

Turnkey stand-alone system with control panel, system stand, integrated reservoir and six nozzles with bracket. As with all GOLD Solutions, the configuration can be edited by the client such that the optimum solution is provided for each application.

