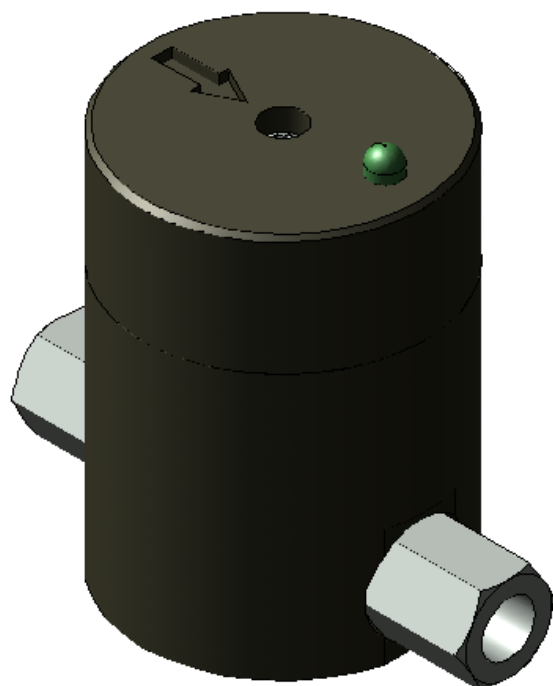


Grease Flow Verification Pulse Illumination During Flow

Genuine Optimized Lubricant Delivery



Simple solutions for grease flow verification by GOLD. Opaque grease lines do not allow for visual inspection of lubrication system output. Oval gear flowmeters serve well to indicate grease flow in lubrication systems. To eliminate the need for a PLC or HMI, GOLD has developed this simple, self-contained, flashing flow detection device.

GOLD has developed a solution that is a self-contained grease flow indicator:

1. Continue to use the lubricant of your choice
2. Eliminates need for logic and wiring
3. Silver Oxide batteries for extended operation
4. Green LED with 60° field of view
5. Changeable standard SR44 batteries
6. Set to pulse with low volume flow

Solution Summary:



Part No.	GAE5VDCGFMP
Availability	3 Weeks
Typical Install Time	< 1 Hour
Number of Lube Points	1 Grease Line
Lubrication Intervals	(Client Grease System)
Recommended Lubes	NLGI 1 or 2
Power Requirements	5VDC (Battery - Included)
Air Requirements	NONE
Recommended Maintenance	Replace batteries as needed

Specifications:

Flow range: 0.655ml - 5 ml/min
Viscosity: ISO VG 1000 / 1000 cSt
Working Temp: 0°C - 67°C (32°F - 152°F)
Working Pressure: 250 bar (3700 psi)

Unit includes: Upper Cover with Green LED indicator, Lower Cover with battery tray, Aluminum Oval Gear Flow Meter, Inlet and Outlet Adapters.