

# INSTALLATION INSTRUCTIONS FOR TCS1 KAT SHIELD (FITS ALL VEHICLES)

**NOTE: IF YOU WOULD LIKE TO HAVE KAT SHIELD INSTALLED (OR BUNDLED WITH A SPARE SHIELD TO PREVENT YOUR SPARE TIRE FROM BEING STOLEN) FOR AN ADDITIONAL COST AT AN AUTHORIZED INSTALLATION FACILITY PLEASE CONTACT US DIRECTLY BY TEXTING 312-735-0401**

**STEP 1** – WEAR SAFETY GLOVES & SAFETY GLASSES. AFTER REMOVING FROM BOX, UNROLL THE KAT SHIELD.

**STEP 2** – IDENTIFY THE CATALYTIC CONVERTER ON THE UNDERSIDE OF YOUR VEHICLE. (SEE PIC 1)

**NOTE:** KAT SHIELD IS MADE LONGER THAN THE CATALYTIC CONVERTER TO CONTINUE TO DETER THE THIEF THAT CUTS FURTHER DOWN THE EXHAUST STEM. CENTER KAT SHIELD ON THE APPROXIMATE CENTER OF THE CONVERTER SO AN EQUAL LENGTH OF KAT SHIELD EXISTS BEYOND EACH END OF THE CONVERTER.

**STEP 3** – VEHICLES EITHER COME WITH THEIR CONVERTERS HELD IN PLACE BY A WELDED SYSTEM OR WITH EXHAUST CLAMPS.



KAT SHIELD  
COLOR VARIES

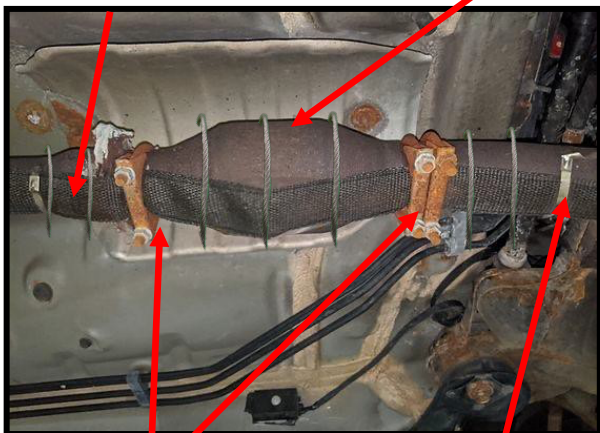
IF IT IS A WELDED SYSTEM, NO EXHAUST CLAMPS ARE NEEDED UNLESS PROVIDED BY OEM.  
IF EXHAUST CLAMPS ARE PROVIDED BY OEM, LOOSEN EACH AND FEED KAT SHIELD THROUGH THEM SECURING EACH AGAIN SO THAT KAT SHIELD IS TIGHT TO THE UNDERSIDE OF THE CONVERTER. (SEE PIC 1)

**STEP 4** – PLACE THE KAT SHIELD SO THAT IT IS FLAT AND DIRECTLY UNDERNEATH THE CATALYTIC CONVERTER. (NOTE: IF YOUR PACKAGE INCLUDED AN EXTRA CABLE INSTALL ONE END UNDER A ZIP TIE ON TOP OF THE CATALYTIC CONVERTER AND CONTINUE TO WORK THE STRAP TIGHT TO THE UNDERSIDE OF THE CONVERTER WHILE CONTINUING TO WRAP CONVERTER WITH THE EXTRA CABLE AND TO FASTEN BOTH THE STRAP AND EXTRA CABLE WITH EACH ZIP TIE ALONG THE ENTIRE LENGTH OF THE CATALYTIC CONVERTER) STRAP SHOULD BE STRAIGHT AND FASTENED TO THE BOTTOM OF THE CONVERTER WHILE THE EXTRA CABLE IS CANDY CANED DOWN THE LENGTH OF THE CONVERTER. (SEE PIC 3)

**STEP 5** – IF THERE IS EXTRA SLACK AT THE END, WRAP THE KAT SHIELD AROUND UNTIL THERE IS NO MORE SLACK.  
NOTE: DO NOT BLOCK ANY VENTILATION OR EXHAUST COMPONENT PROVIDED BY VEHICLE OEM OR AFTERMARKET.

KAT SHIELD TIGHT  
TO UNDERSIDE

1 CATALYTIC CONVERTER



EXHAUST CLAMPS

STAINLESS STEEL TIE

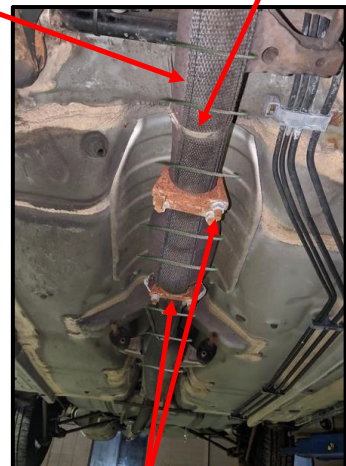
2



(REUSE EXHAUST CLAMPS BY OEM OR  
DISREGARD IF NO OEM CLAMPS)

KAT SHIELD TIGHT  
TO UNDERSIDE

3 STAINLESS STEEL TIE



EXHAUST CLAMPS