

ENVIRONMENTAL NOTES:
 REMOVAL OF OLD EXISTING UPPER AND INTERMEDIATE WELLS WILL HELP REDUCE SALT INTRUSION AND SWFWMD CAUTION AREA IN REGION

ELIMINATE PEACE RIVER WTP SURFACE WATER PIPE PUMPING RED TIDE, ECOLI SPILLS AND MINING-4 MINES BY FLORIDA MINING CORP. REDUCES RED TIDE BY LEAKING WATER IN PEACE RIVER FOR FISH AND DILUTION HELPS LOWERS RED TIDE BLOODS AND SENDS NATURAL SPRING WATER TO THE PEOPLE VS. HEAVY CHEMICAL TREATMENT AT PEACE RIVER WTP.

NOTE:
 SEE LANDTECH DESIGN GROUP PLAN & PROFILE ENGINEERING PLANS AND ENGINEERING REPORTS FOR CONSTRUCTION AND HYDRAULIC CALCULATIONS

WATER QUALITY PURSUANT TO EPA DRINKING WATER REGULATIONS AND 62-555 F.A.C. AND FOOD AND DRUG RULES AND REGULATIONS FOR THE CLEAN WATER ACT.

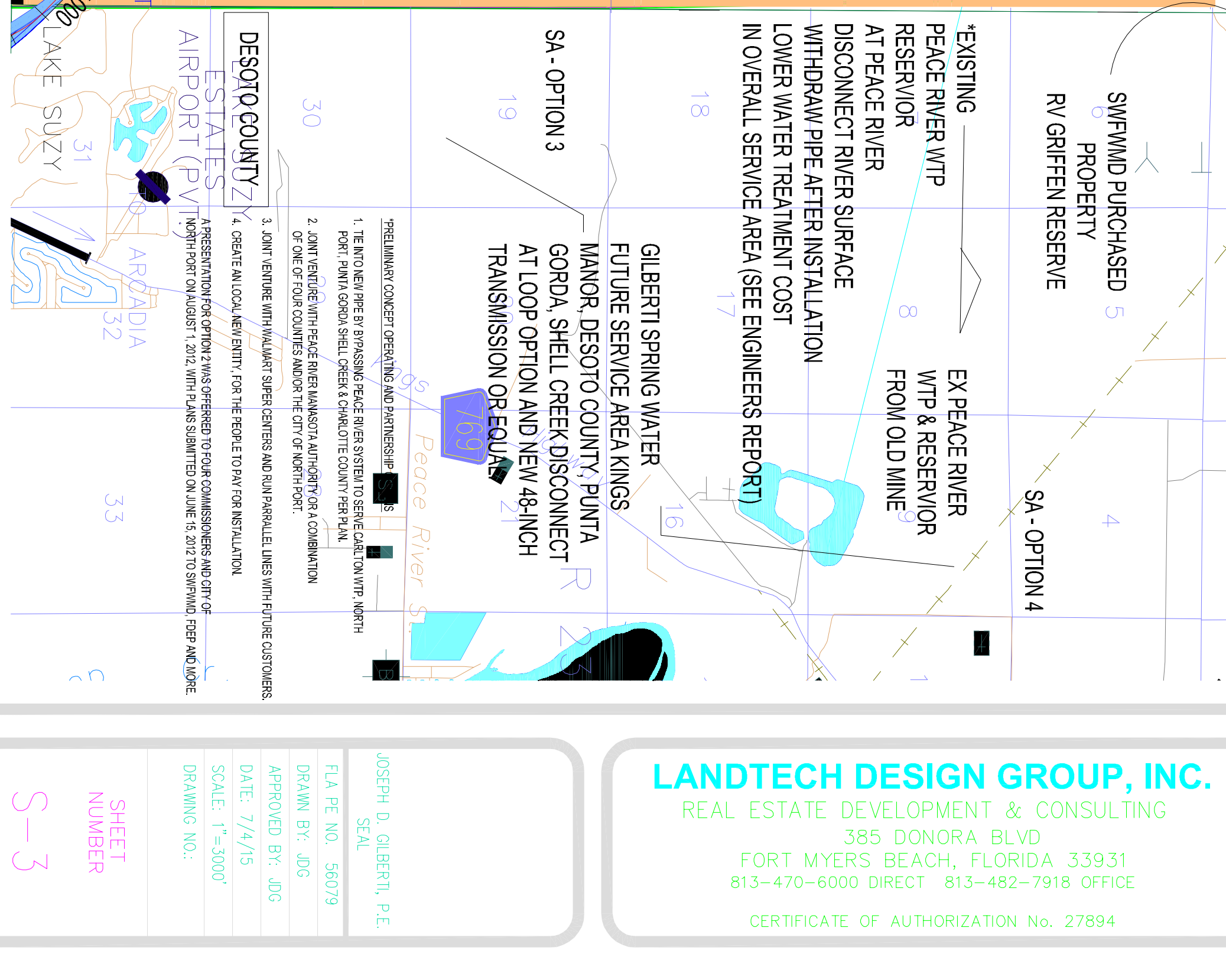
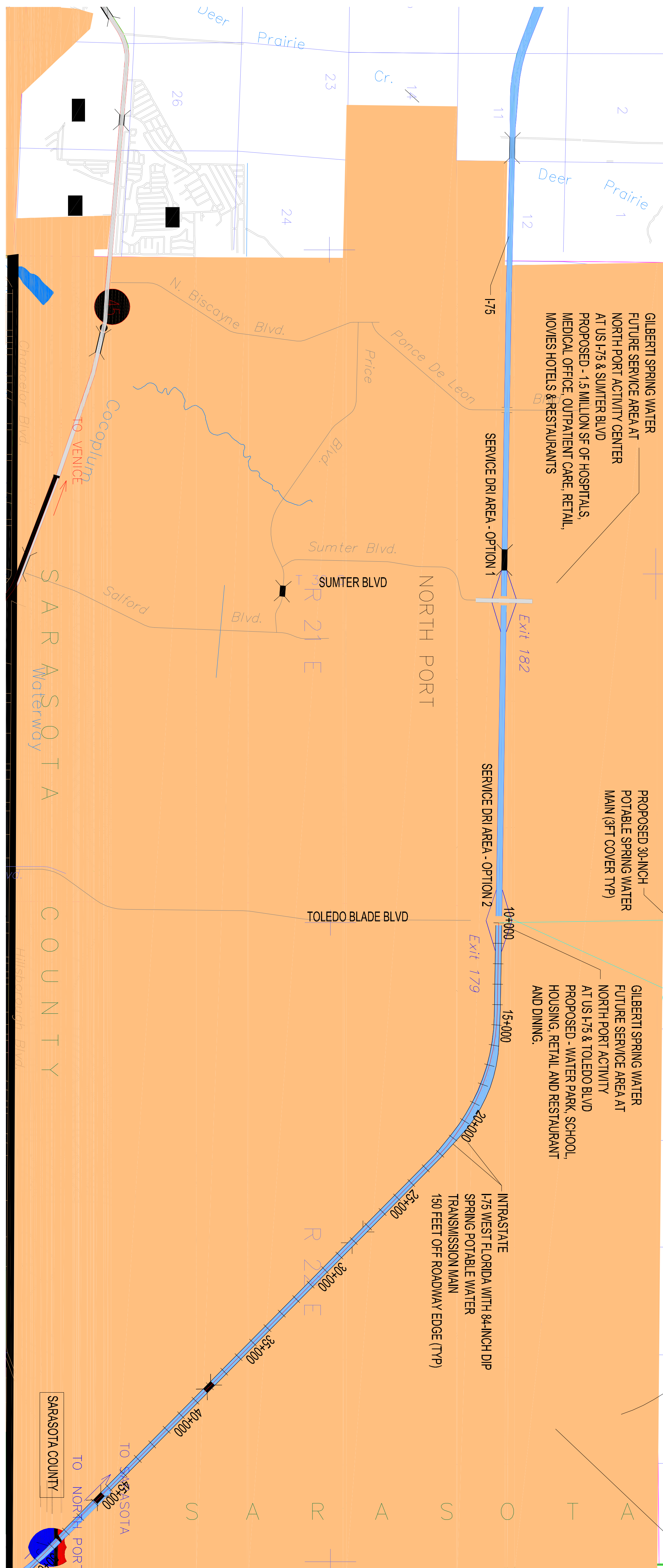
GILBERT SPRING WATER FUTURE SERVICE AREA AT NORTH PORT ACTIVITY CENTER AT US I-75 & SUMTER BLVD PROPOSED - 1.5 MILLION SF OF HOSPITALS, MEDICAL OFFICE, OUTPATIENT CARE, RETAIL, MOVIES HOTELS & RESTAURANTS

POTABLE SPRING WATER MAIN (9FT COVER TYP)

GILBERT SPRING WATER FUTURE SERVICE AREA AT NORTH PORT ACTIVITY CENTER AT US I-75 & TOLEDO BLVD PROPOSED - WATER PARK, SCHOOL, HOUSING, RETAIL AND RESTAURANT AND DINING.

SWFWMD AND SARASOTA ELAPP PURCHASED PROPERTY TO EX COMMISSIONERS AND SENATOR FAMILIES MARYBRY CAPLITON AND BUSTER LONGINO OVER PAST 10 YEARS OR MORE IN SARASOTA COUNTY WITH BOTH FEDERAL AND STATE FUNDING TAX BASE IN THE MILLIONS.

EXISTING 20+ MILE - 42" HEAVY TREATED PEACE RIVER RADIOACTIVE WATER TRANSMISSION TO BE REPLACED BY GILBERT SOURCE AND REMOVE PEACE RIVER WATER USE WITHDRAWAL PERMIT AND ABOVE GROUND RESERVOIR SYSTEM TO AVOID EXPOSURE TO SKY AND AVOID TERRORIST ATTACKS TO EXPOSED EXISTING SYSTEMS BUILT IN 2007 BY PEACE RIVER AND TAMPA BAY WATER CW BILL (SEE STAFFORD ACT SECTION 6.11)



DESOTO COUNTY:
 1. CREATE AN AUCO AND AGENCY FOR THE REGION TO PLAN FOR RETAILERS
 2. JOINT REVIEW WITH PEACE RIVER WASTEWATER AUTHORITY OR A COMBINATION OF ONE OR MORE COUNTIES AND/OR THE CITY OF NORTH PORT.
 3. JOINT REVIEW WITH WASTEWATER SPECIAL SERVICES AND SANITARIUMS UNITS WITH PRIVATE CUSTOMERS

PEACE RIVER WTP RESERVOIR AT PEACE RIVER DISCONNECT RIVER SURFACE WITHDRAW PIPE AFTER INSTALLATION LOWER WATER TREATMENT COST IN OVERALL SERVICE AREA (SEE ENGINEERS REPORT)

GILBERT SPRING WATER FUTURE SERVICE AREA KINGS MANOR, DESOTO COUNTY, PUNTA GORDA, SHELL CREEK DISCONNECT AT LOOP OPTION AND NEW 48-INCH TRANSMISSION OR EQUAL

ENVIRONMENTAL NOTES:
 REMOVAL OF OLD EXISTING UPPER AND INTERMEDIATE WELLS WILL HELP REDUCE SALT INTRUSION AND SWFWMD CAUTION AREA IN REGION

ELIMINATE PEACE RIVER WTP SURFACE WATER PIPE PUMPING RED TIDE, ECOLI SPILLS AND MINING-4 MINES BY FLORIDA MINING CORP. REDUCES RED TIDE BY LEAKING WATER IN PEACE RIVER FOR FISH AND DILUTION HELPS LOWERS RED TIDE BLOODS AND SENDS NATURAL SPRING WATER TO THE PEOPLE VS. HEAVY CHEMICAL TREATMENT AT PEACE RIVER WTP.

NOTE:
 SEE LANDTECH DESIGN GROUP PLAN & PROFILE ENGINEERING PLANS AND ENGINEERING REPORTS FOR CONSTRUCTION AND HYDRAULIC CALCULATIONS

WATER QUALITY PURSUANT TO EPA DRINKING WATER REGULATIONS AND 62-555 F.A.C. AND FOOD AND DRUG RULES AND REGULATIONS FOR THE CLEAN WATER ACT.

GILBERT SPRING WATER FUTURE SERVICE AREA AT NORTH PORT ACTIVITY CENTER AT US I-75 & SUMTER BLVD PROPOSED - 1.5 MILLION SF OF HOSPITALS, MEDICAL OFFICE, OUTPATIENT CARE, RETAIL, MOVIES HOTELS & RESTAURANTS

POTABLE SPRING WATER MAIN (9FT COVER TYP)

GILBERT SPRING WATER FUTURE SERVICE AREA AT NORTH PORT ACTIVITY CENTER AT US I-75 & TOLEDO BLVD PROPOSED - WATER PARK, SCHOOL, HOUSING, RETAIL AND RESTAURANT AND DINING.

SWFWMD AND SARASOTA ELAPP PURCHASED PROPERTY TO EX COMMISSIONERS AND SENATOR FAMILIES MARYBRY CAPLITON AND BUSTER LONGINO OVER PAST 10 YEARS OR MORE IN SARASOTA COUNTY WITH BOTH FEDERAL AND STATE FUNDING TAX BASE IN THE MILLIONS.

EXISTING 20+ MILE - 42" HEAVY TREATED PEACE RIVER RADIOACTIVE WATER TRANSMISSION TO BE REPLACED BY GILBERT SOURCE AND REMOVE PEACE RIVER WATER USE WITHDRAWAL PERMIT AND ABOVE GROUND RESERVOIR SYSTEM TO AVOID EXPOSURE TO SKY AND AVOID TERRORIST ATTACKS TO EXPOSED EXISTING SYSTEMS BUILT IN 2007 BY PEACE RIVER AND TAMPA BAY WATER CW BILL (SEE STAFFORD ACT SECTION 6.11)

DESOTO COUNTY:
 1. CREATE AN AUCO AND AGENCY FOR THE REGION TO PLAN FOR RETAILERS
 2. JOINT REVIEW WITH PEACE RIVER WASTEWATER AUTHORITY OR A COMBINATION OF ONE OR MORE COUNTIES AND/OR THE CITY OF NORTH PORT.
 3. JOINT REVIEW WITH WASTEWATER SPECIAL SERVICES AND SANITARIUMS UNITS WITH PRIVATE CUSTOMERS

PEACE RIVER WTP RESERVOIR AT PEACE RIVER DISCONNECT RIVER SURFACE WITHDRAW PIPE AFTER INSTALLATION LOWER WATER TREATMENT COST IN OVERALL SERVICE AREA (SEE ENGINEERS REPORT)

GILBERT SPRING WATER FUTURE SERVICE AREA KINGS MANOR, DESOTO COUNTY, PUNTA GORDA, SHELL CREEK DISCONNECT AT LOOP OPTION AND NEW 48-INCH TRANSMISSION OR EQUAL

LANDTECH DESIGN GROUP, INC.
 REAL ESTATE DEVELOPMENT & CONSULTING
 385 DONORA BLVD
 FORT MYERS BEACH, FLORIDA 33931
 813-470-6000 DIRECT 813-482-7918 OFFICE
 CERTIFICATE OF AUTHORIZATION No. 27894

CLOSER TO THE HEART
 SPRING WATER TRANSMISSION PLAN
 FDOT DISTRICT 1 DESIGN DEVELOPMENT
 SARASOTA-DESOTO-CHARLOTTE-LEE, FLORIDA
GILBERT WATER COMPANY, LLC
 TRANSMISSION ALIGNMENT PLAN

DATE: _____ REVISIONS: _____ BY: _____

JOSEPH D. GILBERT, P.E.
 SCALE
 FLA REG. NO. 56079
 DRAWN BY: JDC
 APPROVED BY: JDC
 DATE: 7/4/15
 SCALE: 1"=3000'
 DRAWING NO.:

SHEET NUMBER
 S-3