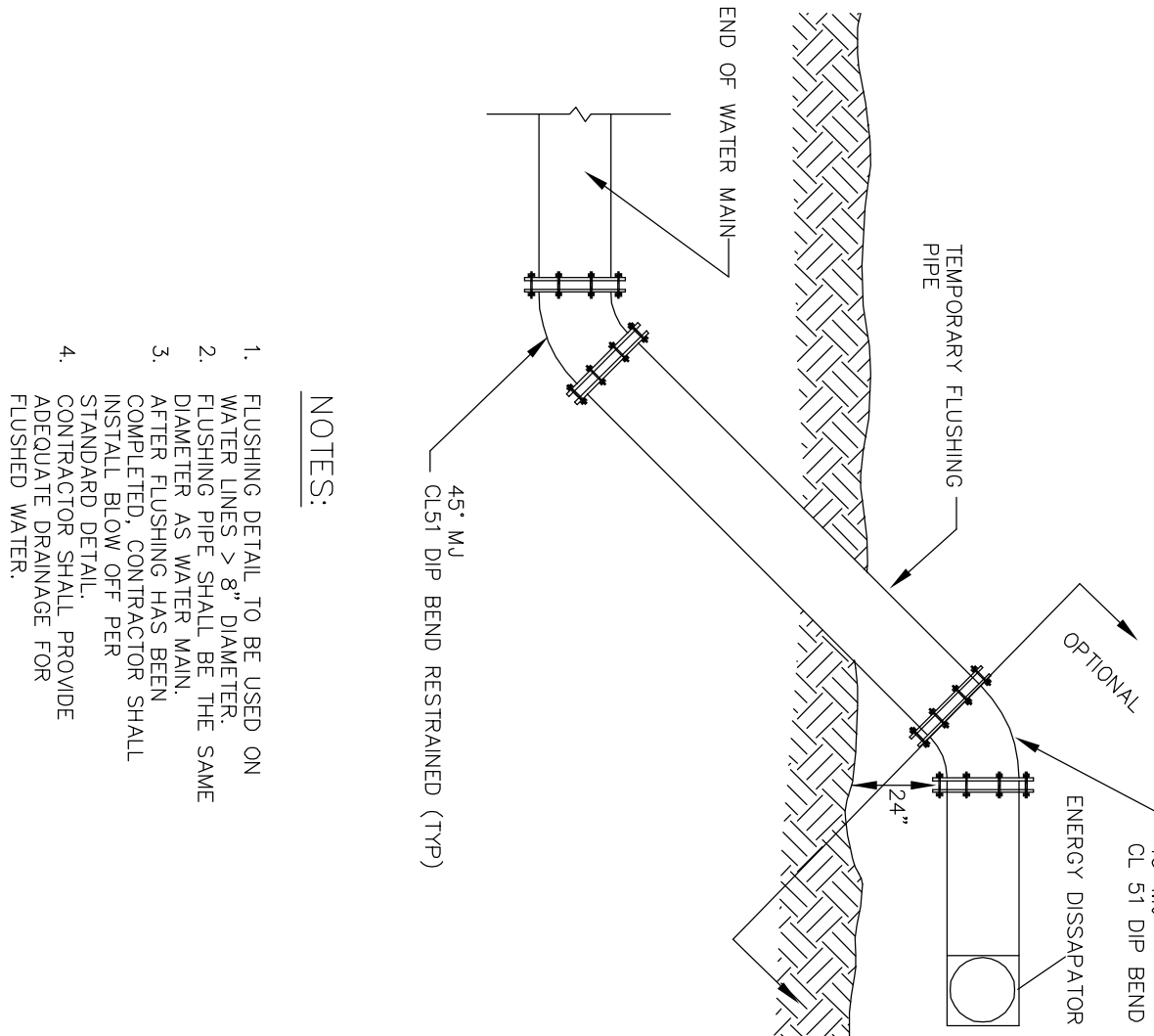
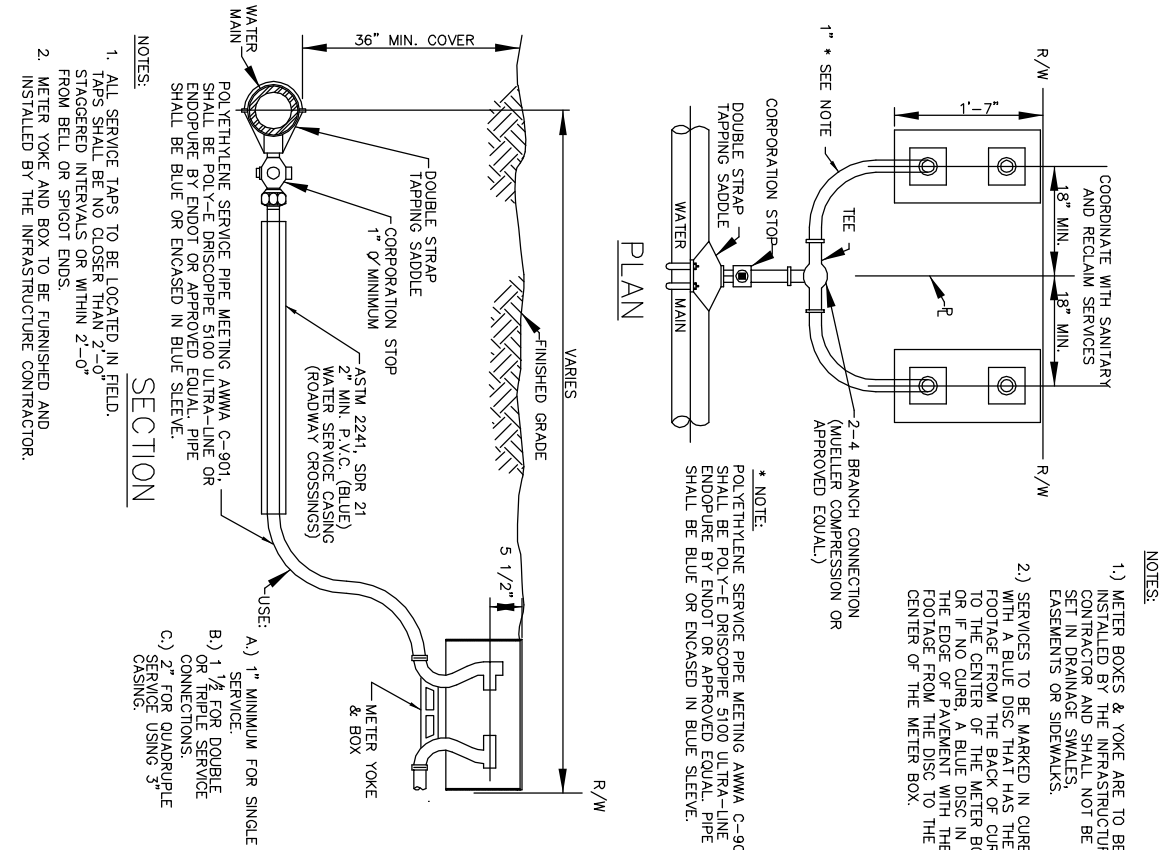


WATER MAIN FLUSHING DETAIL

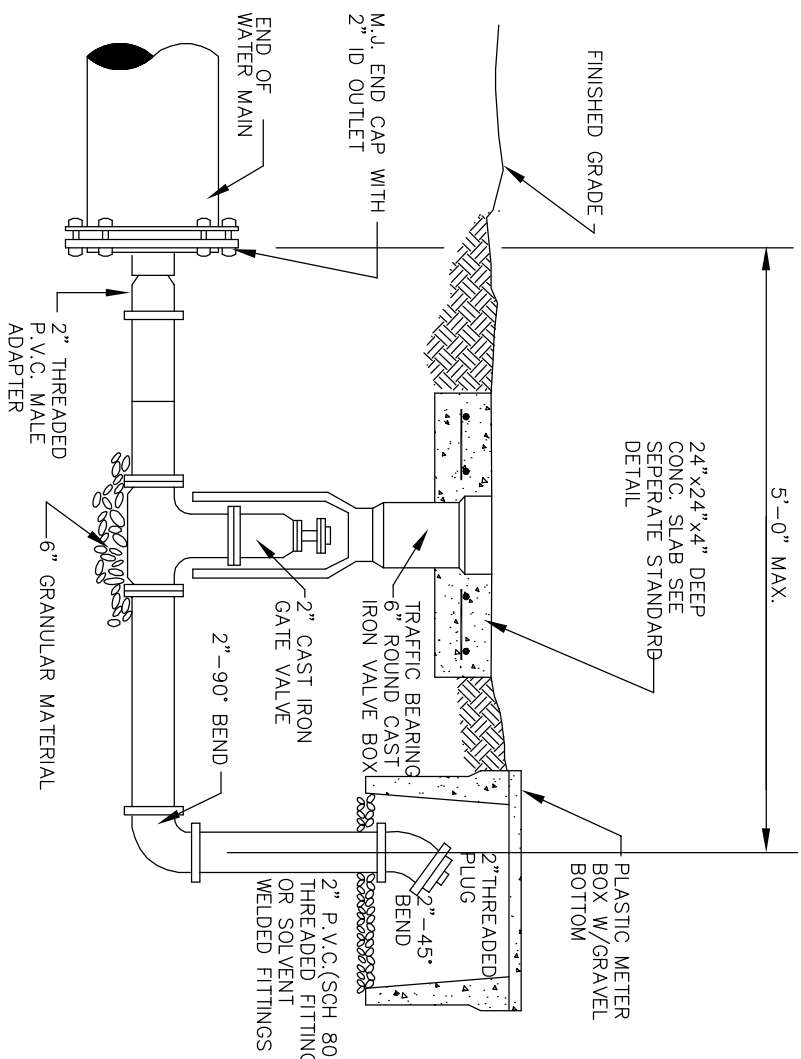


WATER MAIN FLUSHING DETAIL

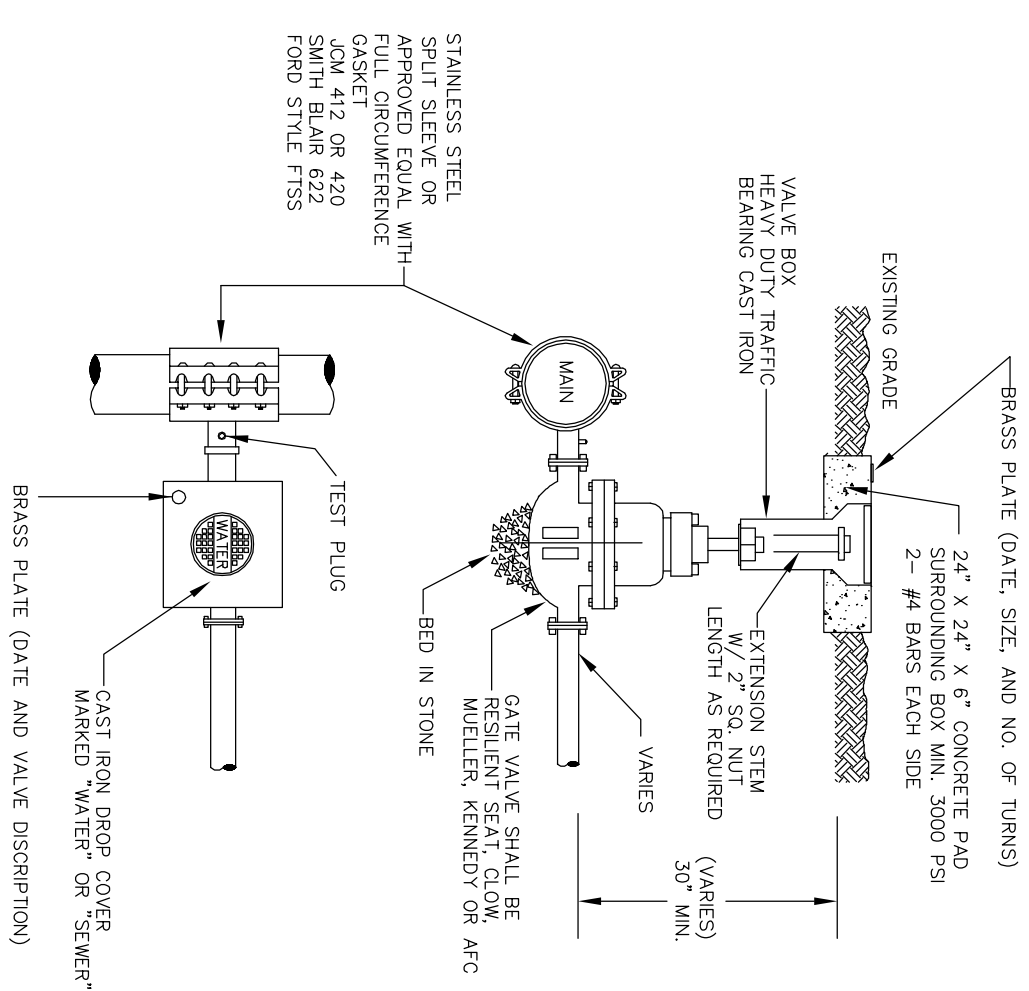


TYPICAL WATER SERVICE CONNECTION

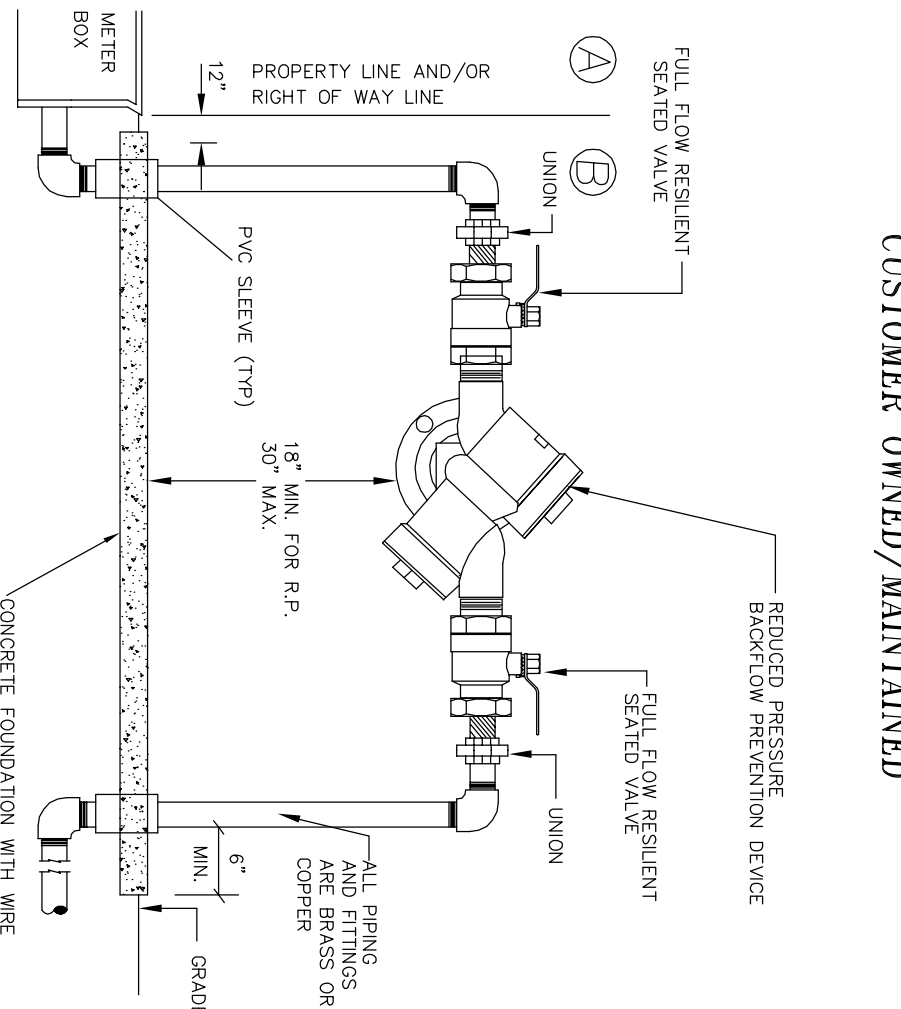
BLOW OFF DETAIL



BLOW-OFF DETAIL



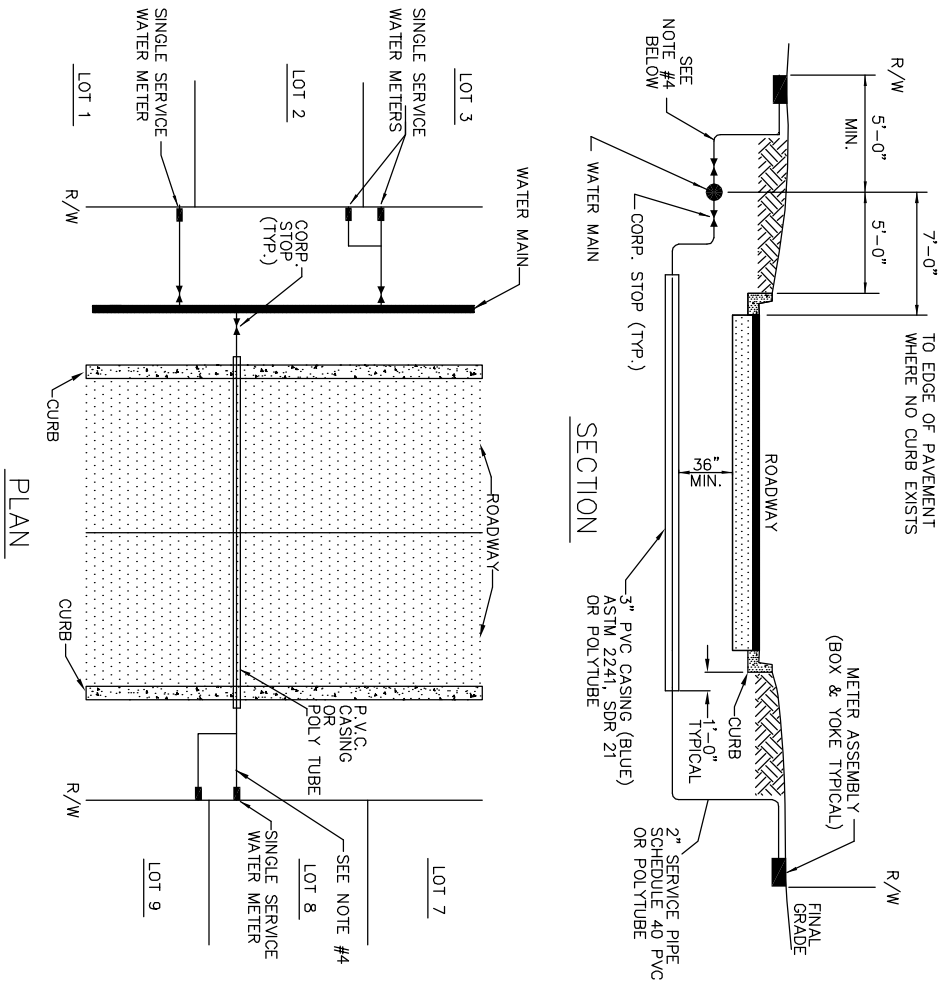
TAPPING SLEEVE & VALVE



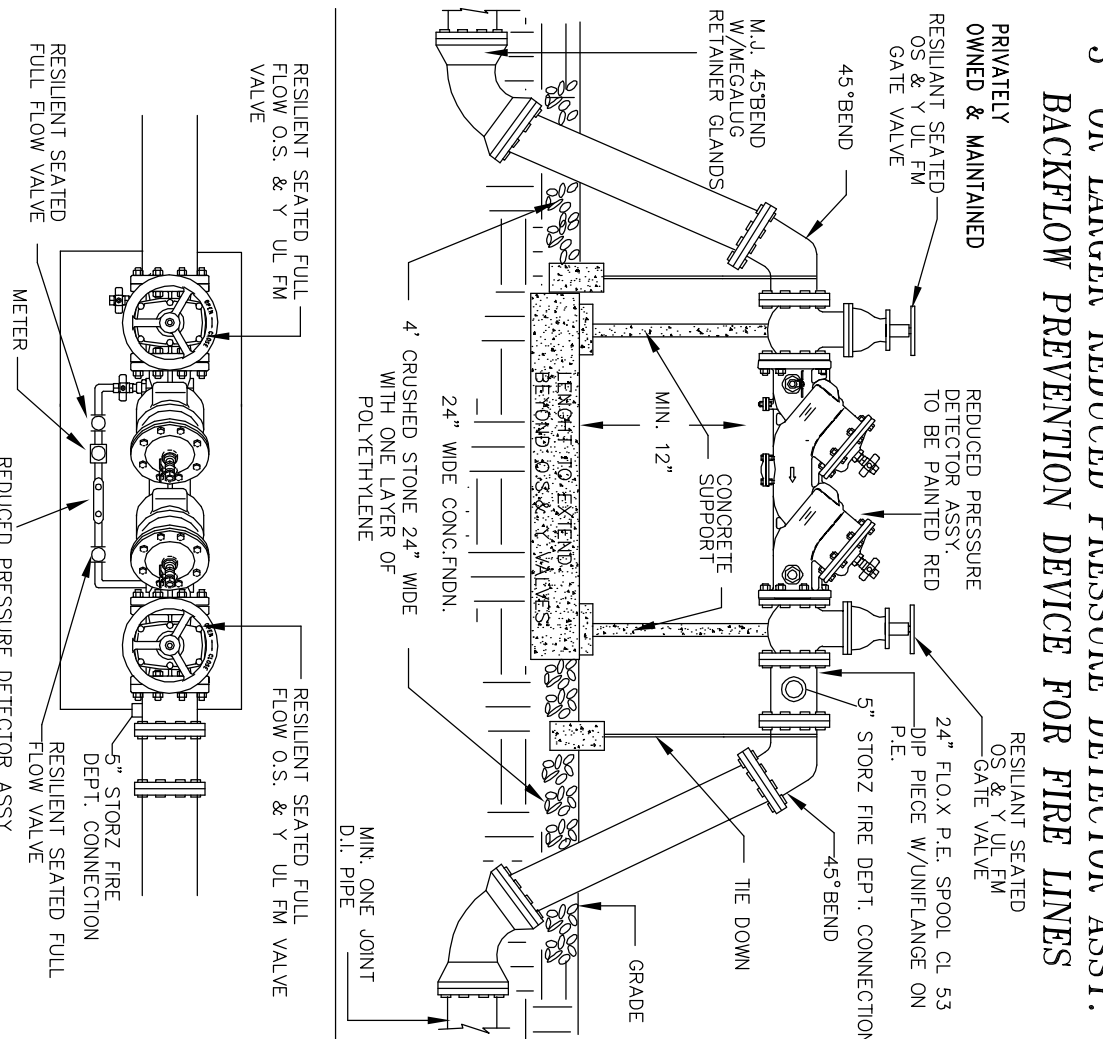
CUSTOMER OWNED/MAINTAINED

- 1. CITY OF ARCADIA OWNED AND MAINTAINED
- 2. CUSTOMER OWNED AND MAINTAINED
- 3. SERVICE AND BACKFLOW PREVENTION

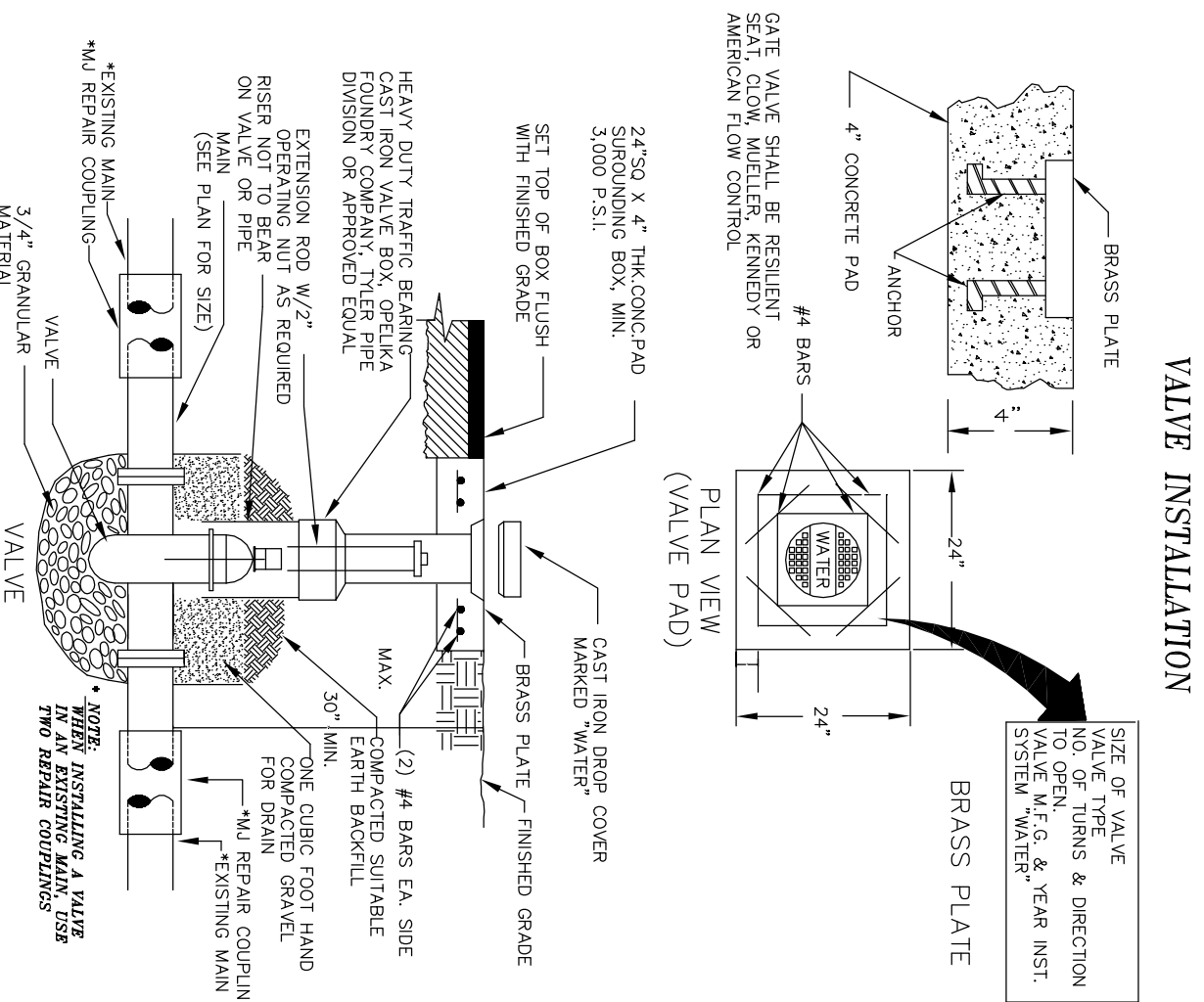
BACKFLOW PREVENTION DEVICE 3/4\"/>



WATER SERVICE

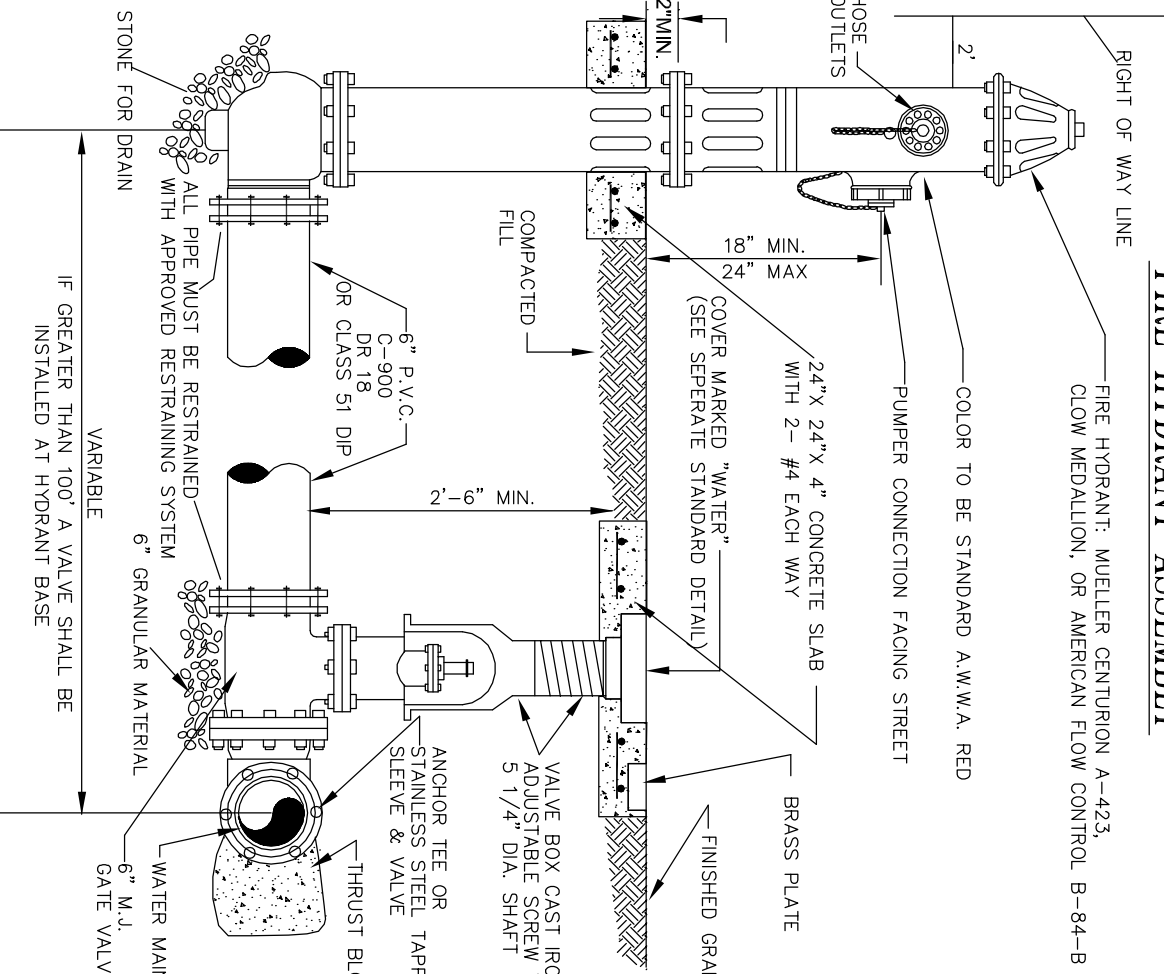


3\"/>



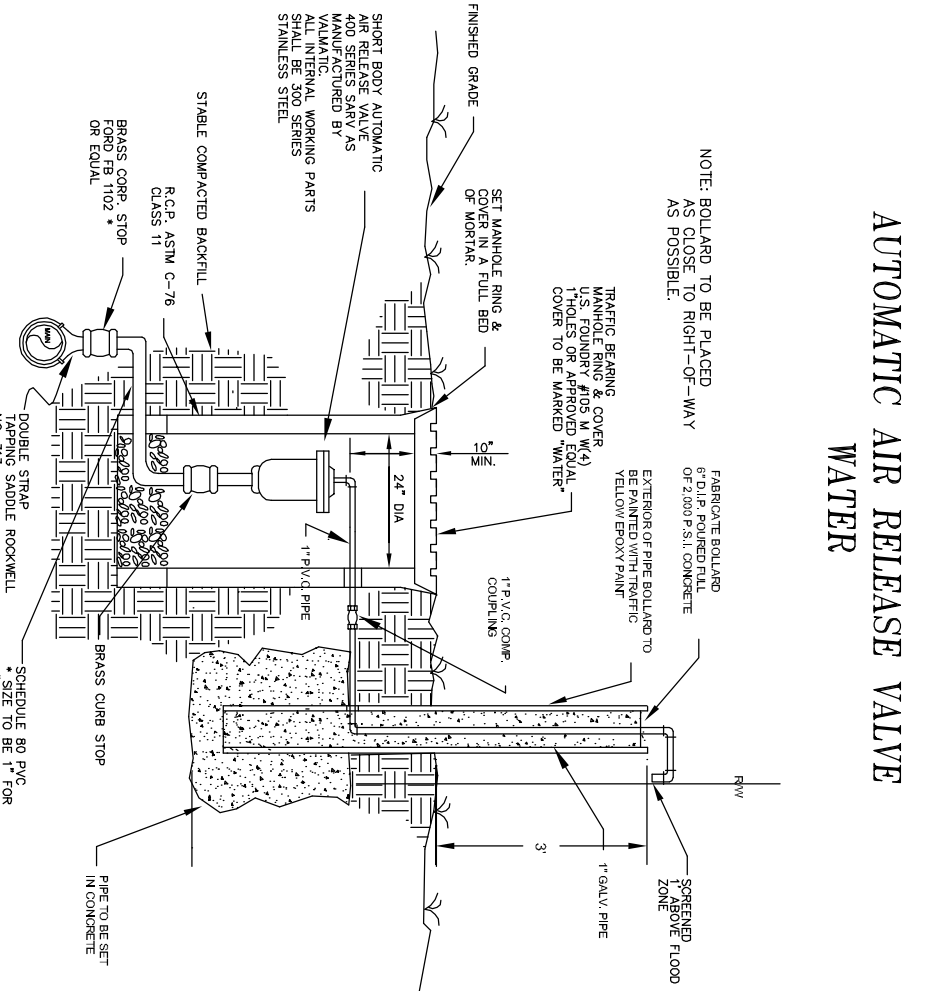
VALVE INSTALLATION

VALVE INSTALLATION



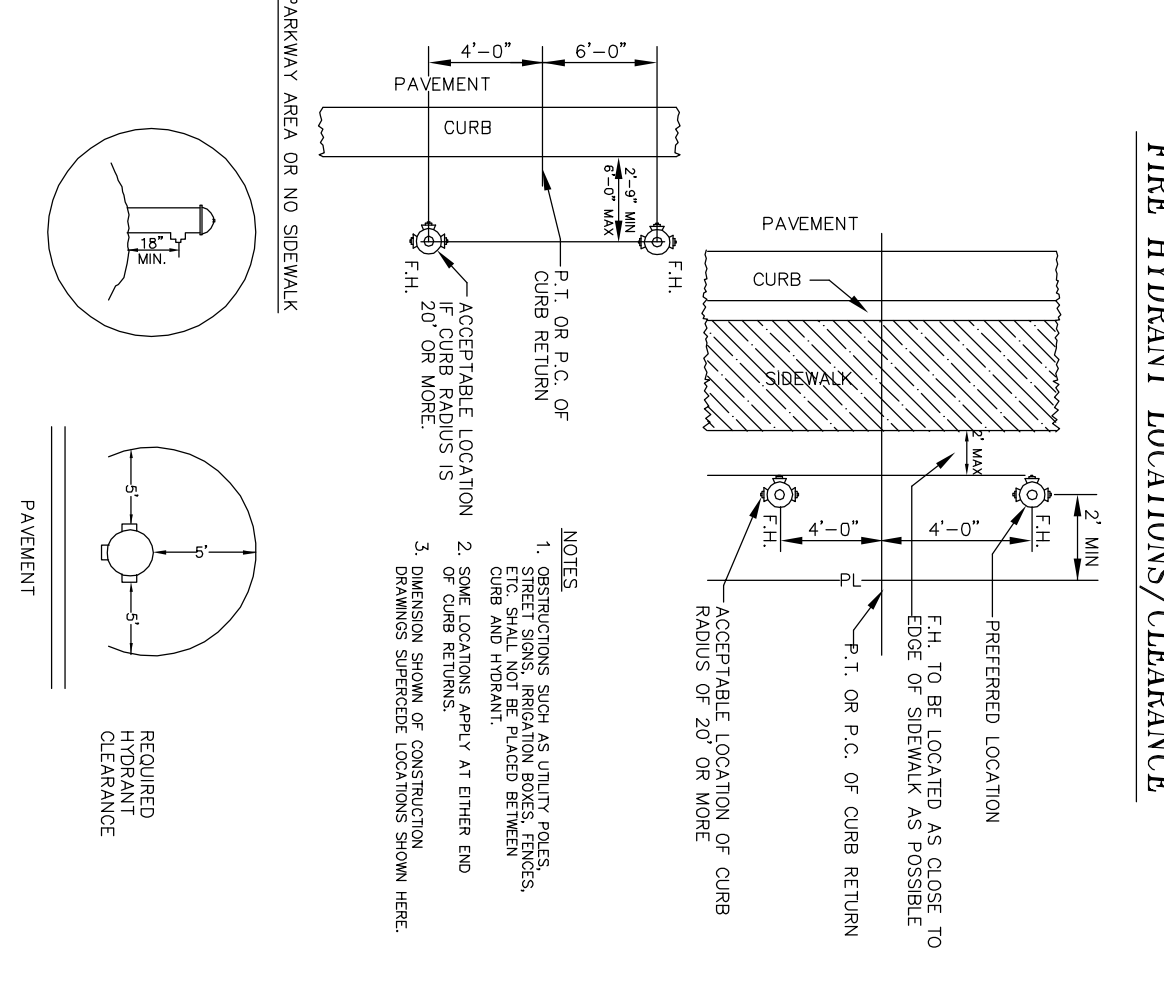
FIRE HYDRANT ASSEMBLY

FIRE HYDRANT ASSY.



AUTOMATIC AIR RELEASE VALVE

AUTOMATIC AIR RELEASE VALVE FOR WATER



FIRE HYDRANT LOCATIONS/CLEARANCE

FIRE HYDRANT LOCATION/CLEARANCE

JOSEPH D. GILBERTI, P.E.
SCALE
FLA PE NO. 56079
DRAWN BY: JDC
APPROVED BY: JDC
DATE: 7/28/13
SCALE: NTS
DRAWING NO.:

LANDTECH DESIGN GROUP, INC.
REAL ESTATE DEVELOPMENT & CONSULTING
3148 BEAVER POND TRAIL
VALRICO, FLORIDA 33596
813-470-6000 DIRECT
WWW.LANDTECHDESIGNGROUP.COM
CERTIFICATE OF AUTHORIZATION No. 27894

CLOSER TO THE HEART
SPRING WATER ANTIOXIDANT AND SOUTHERN
FLORIDA POTABLE TRANSMISSION SYSTEM
SARASOTA, FLORIDA
JOSEPH D. GILBERTI, P.E., LAND OWNER
RAW WATER DETAILS AND NOTES

DATE:	REVISIONS:	BY: