

Move and Groove Hemp

Sample 567-031623-024

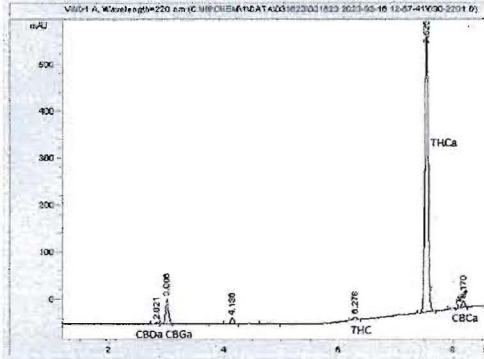
Ice Runtz THC-A Hemp

Sample Submitted:10-04-2024; Report Date:10-06-2024

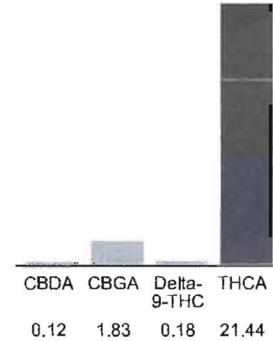
Ice Runtz THC-A Hemp

Plant Material: Flower

Chromatogram



Cannabinoid Profile



Cannabinoid Profile by HPLC

**0.18%**  
Delta-9-THC

**0.00%**  
CBD

**23.57%**  
Total Cannabinoids

Cannabinoid	% wt	mg/g
CBDA	0.12	1.2
CBGA	1.83	18.3
Delta-9-THC	0.18	1.8
THCA	21.44	214.4
<b>Total Cannabinoids</b>	<b>23.57</b>	<b>235.7</b>
<b>Calculated CBD Yield</b>	<b>0.11</b>	<b>1.05</b>

Calculated Maximum CBD Yield = CBD + 0.877 \* CBDA

**Marin Analytics, LLC**  
250 Bel Marin Keys Blvd, Suite D4  
Novato, CA 94949

415-936-6477 / sarabiancalana1@gmail.com

*Sara Biancalana*

**Sara Biancalana**  
Chief Scientist

This sample has been tested by Marin Analytics, LLC using valid testing methodologies and a quality system. Values reported relate only to the sample tested. Marin Analytics, LLC makes no claims as to the efficacy, safety or other risks associated with any detected or non-detected levels of any compounds reported herein. This Certificate shall not be reproduced except in full, without the written approval of Marin Analytics, LLC. Copyright 2022 Marin Analytics, LLC All Rights Reserved.