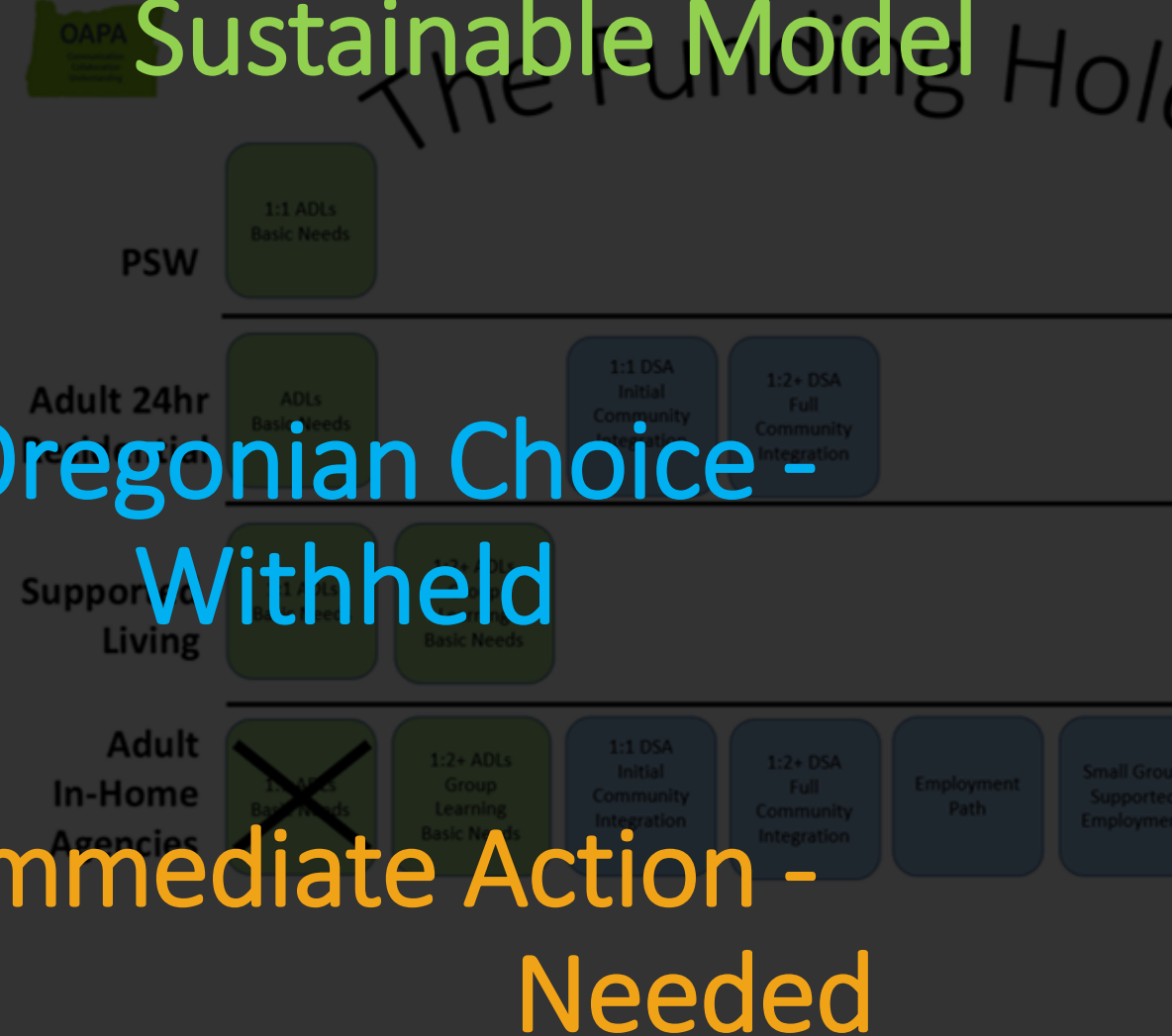


In-Home Services - The Safe Sustainable Model

Oregonian Choice - Withheld

Immediate Action - Needed





All Oregonians have the right to live in the safest environment they can.

All Oregonians have the right to access supports to help them stay alive and healthy.

Liberties are being curtailed, abilities are being judged, and needs are being forced to conform to programs designed by others.

Oregon
cannot afford
to cut its
best cost-saving
option

Choosing
to live at home
should not
make an Oregonian
politically expendable

****Definitions in the context of this discussion**

What does it mean?

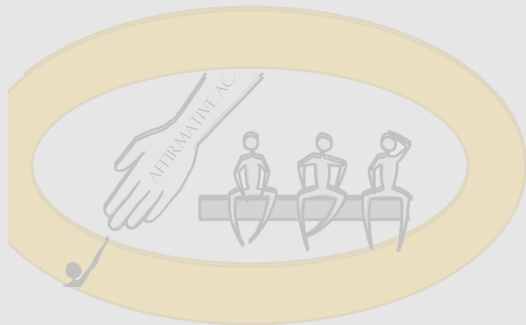
1. **In-Home:** Getting help from providers when you are living in your own home, with roommates, or with your family or friends**
2. **Residential Homes and Foster Care:** Getting help from providers when you are living in a home the provider owns or operate
3. **Supported Living:** Getting help from providers in a blended setting
4. **Budget:** How the government will spend its money
5. **Budget Cuts:** How the government will take money back from the budget
6. **Funding:** The money to pay providers
7. **Sustainable:** To be able to keep doing something even when there is little funding because of budget cuts



The Safe, Sustainable Way



The Freedom to Choose



Stop In-Home Cuts



In-Home
is
a safe and sustainable
choice

- In-Home services keep people in a safer environment
- In-Home is stable because it uses both paid and unpaid providers
- In-Home helps people of all abilities to stay in their own environment
- In-Home is a responsible way to use funding
- Cost-effective choices like In-Home save the government a lot of money
- Honor the choice to stay in the least restrictive setting
- In-Home services offer
 - ✓ A smooth path to new programs without losing your provider
 - ✓ Someone who can help you and your provider work together
 - ✓ A personalized blend of services
 - ✓ Faster way to get providers hired and working
 - ✓ Less chance of unreported abuse
 - ✓ Less chance of becoming too dependent on only one person
 - ✓ More provider supervision
 - ✓ More providers to choose from

Did you know



□ In-Home supports:

- ✓ Serve 70% of people in I/DD system
- ✓ Are provided by smaller agencies
- ✓ Community integrated (only have smaller offices or none at all)
- ✓ Management work directly with individuals
- ✓ Least funded service in the system, at 70% of model
- ✓ Needed for choice
- ✓ Helps families to keep their loved one home
- ✓ Customized to each individual's circumstances



Do not
cut
the In-Home option

- In-Home services are not less important

- All needs are important no matter where someone lives

- ...yet

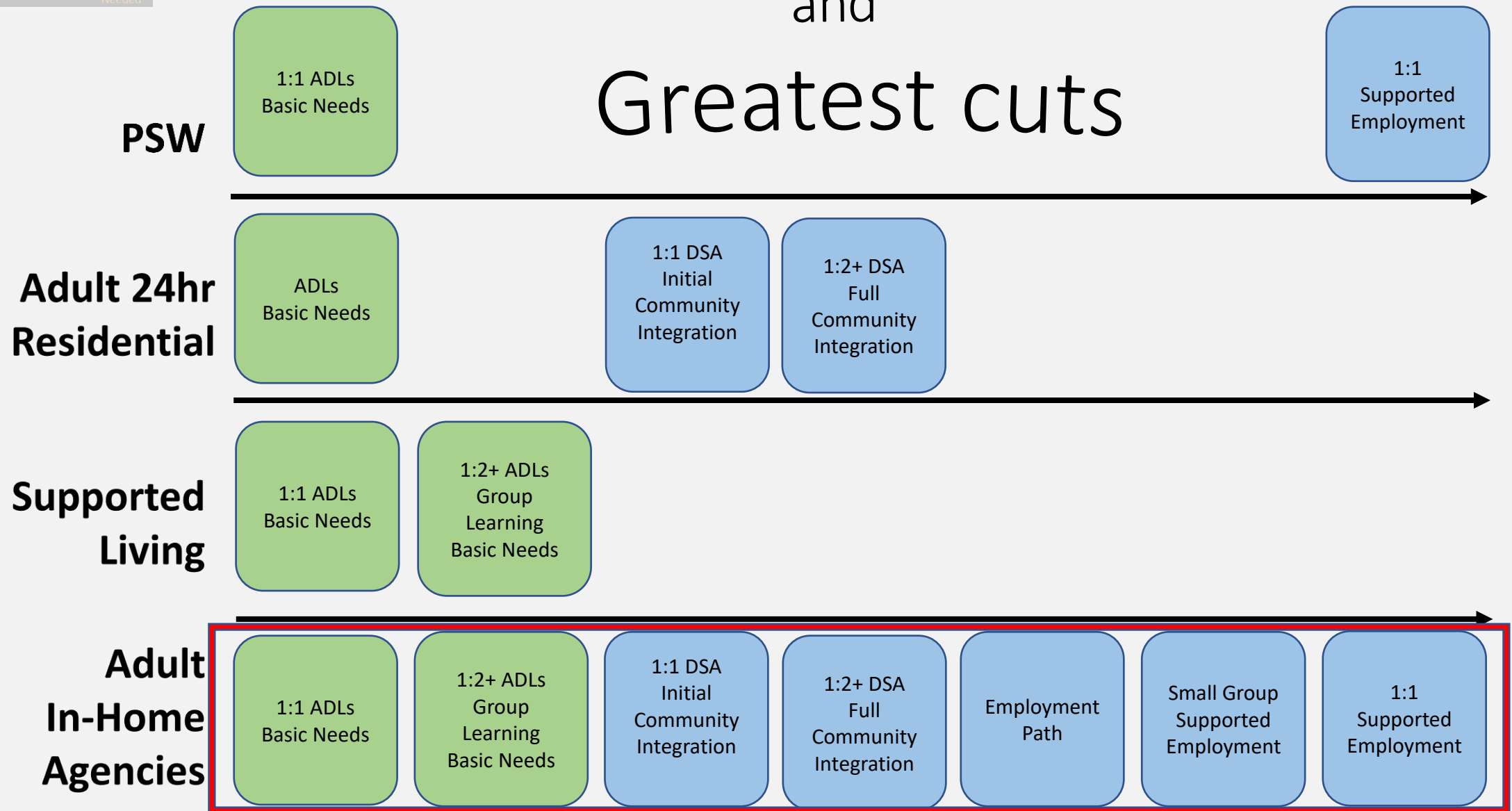
- In-Home has not gotten the same funding as other services

- ...and now

- In-Home funding services are facing the largest cuts



Least funded and Greatest cuts

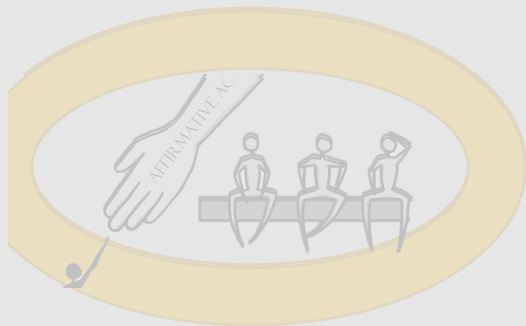




The Safe, Sustainable Way



The Freedom to Choose



Stop In-Home Cuts



The law supports In-Home choice

- ❑ Everyone has the constitutional right to
 - ✓ basic health & safety
 - ✓ access to community of their choice
 - ✓ access to employment of their choice

- ❑ The Staley Lawsuit says Oregon
 - ✓ “...will supplement or replace natural supports only as necessary.”
 - ✓ “...must be able to use limited resources as efficiently as possible, giving the State the ability to propose services that do not have ‘around-the-clock’ staffing.”

- ❑ Community First Choice State Plan (K-Plan)
 - ✓ “CFC Services will be provided in a home or community setting...”
 - ✓ “...was created by the Affordable Care Act (ACA) to make it easier for states to offer home- and community-based services to Medicaid beneficiaries.”
 - ✓ “The CFC program requires ... beneficiaries to direct their own care as much as possible.”
 - ✓ “...the Medicaid beneficiary should have the authority to interview care attendants, choose the best one, and fire that person if necessary.”



Choice and wellness

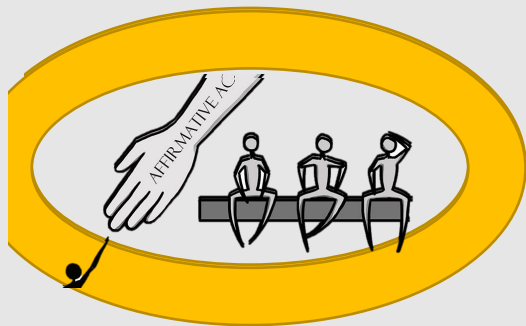
- Ensures people with I/DDs understand that a better life is possible for them
- Helps reverse the isolation that stems from early experience in segregated classrooms by promoting integrated options
- Enables providers to focus on the participant
- Helps participants become and remain full members of their communities and gain acceptance by unpaid people



The Safe, Sustainable Way



The Freedom to Choose



Stop In-Home Cuts



Maximum effort
ends
in minimal results

Earlier this biennium

- Near exclusion from the \$30 million 2019 Legislative Budget Ask despite extensive advocacy and collaboration
- 2020/21 funding for In-Home 1:1 ADLs approved under 70% when other services were approved for 90% funding for their rate models
- Contingency funding during COVID-19 for In-Home ADLs was not offered
- Contingency rate increases during COVID-19 for In-Home ADLs were not offered but residential services saw increases of 10%
- Campaigns to equalize all options and create continuity of incentives are showing that In-Home services are not being valued

Currently

- In-Home community integration services are set to be cut 100%
- In-Home attendant care services are set to be cut by a further 9%
- In-Home employment supports are set to be cut 9%



We must
act
now!!

- ❑ Participants and families, speak to your Legislators
 - ✓ Tell them your choice and your rights matter!
 - ✓ Tell them that you and your needs are important!
 - ✓ Tell them you want to be able to choose your services!
 - ✓ Tell them you need In-Home to be funded!
 - ✓ Tell them about your growth!
 - ✓ Tell them to stop cutting your In-Home services!
 - ✓ Send them a letter (you can use the letter we have on the website)

- ❑ Providers,
 - ✓ Send them a letter (you can use the letter we have on the website)
 - ✓ Be loud about the need to allow those with I/DD to choose
 - ✓ Tell Legislators In-Home needs to be funded
 - ✓ Tell Legislators to stop cutting In-Home services – we are already underfunded
 - ✓ Ask everyone you know to speak to their Legislators and pass along the position paper and this PDF
 - ✓ Tell everyone you know to tell everyone they know



Who to contact

Legislators to contact:

Co-Chairs, Ways and Means (they determine the final DHS's budget)

Betsy Johnson, State Senator

Email: Sen.BetsyJohnson@oregonlegislature.gov

Phone: Capitol Phone:503-986-1716 District Phone:503-543-4046

Elizabeth Steiner Hayward, State Senator

Email: Sen.ElizabethSteinerHayward@oregonlegislature.gov

Phone: Capitol Phone: 503-986-1717

Questions about this document or OAPA:

Danya Ochoa, OAPA President,

danya@abilityts.com

Shannon McCurry, OAPA Legislative Chair

shannon@amiescommunitycare.com

Information about OAPA:

<https://oregonassociationofproviders.org>

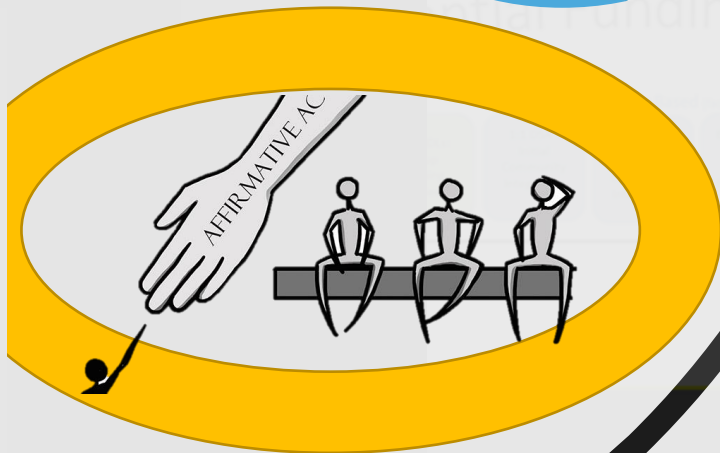
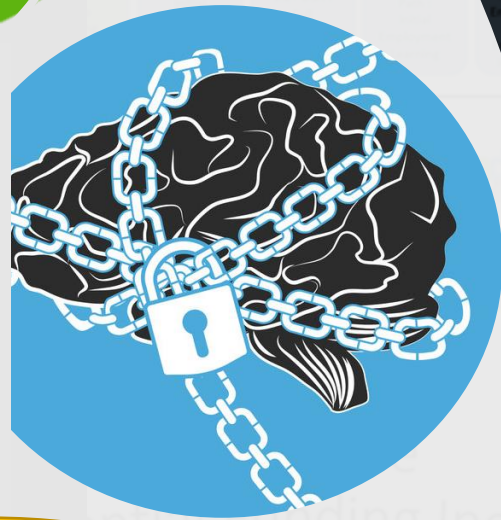


Establish incentives to support people in the least restrictive settings consistent with individual needs and preferences.

Think beyond "the bubble"

Improve
system sustainability by
supporting people to keep
living their own lives in
their own homes by
means of
natural integrations

Do More with Less



In-Home Services -
Sustain the Model!

Oregonian Choice -
We Want It!

Immediate Action -
Ready, Set, Go!

