

Peer Gynt Suite No. 1

Op. 46

Violoncello.

Edvard Grieg

I. Morgenstimmung.

Allegretto pastorale.

Flauto.

2 divisi 3

p *cresc.* *f* *più f* *ff* *p* *cresc. f* *p* *f* *p* *cresc. molto* *ff* *dim.*

p *tranquillo* *pp* *pcantabile* *tranquillo divisi* *pp* *dim.* *pp* *poco rit.*

pizz. *rit.* *arco* *più tranquillo*

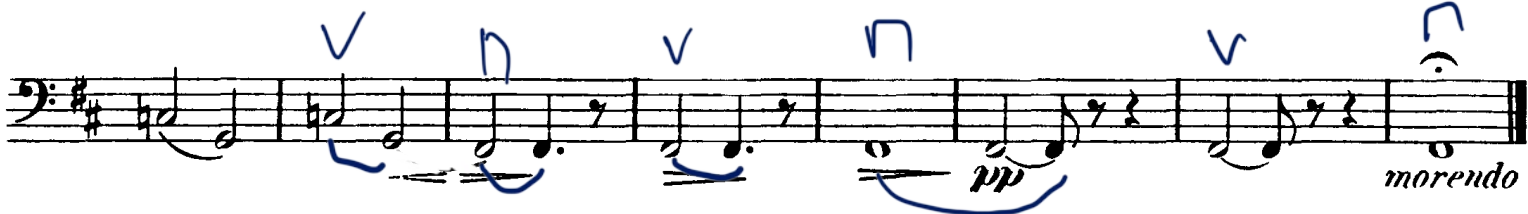
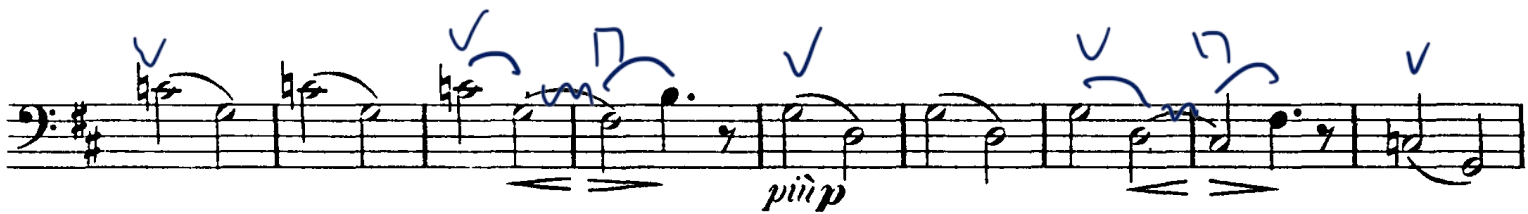
Violoncello.

3

II.

Åses Tod.

Andante doloroso.
Con sordino.



By
stand

Violoncello.

III.

Anitras Tanz.

Tempo di Mazurka.

Con sordino.

pizz.

Con sordino.

pizz.

arco

pp
(pizz.)

pizz.

f

arco

arco

arco

arco

pizz.

pizz.

Violoncello.

5

pizz. **A**

pizz.

pp

pp

B *arco*

cresc.

f (sempre pizz.)

dim.

cresc.

f

poco rit. - - - *a tempo*

p

poco rit. - - - *a tempo*

p

pp

C

pizz. 1.

f

pp

f

pp

1

1

2.

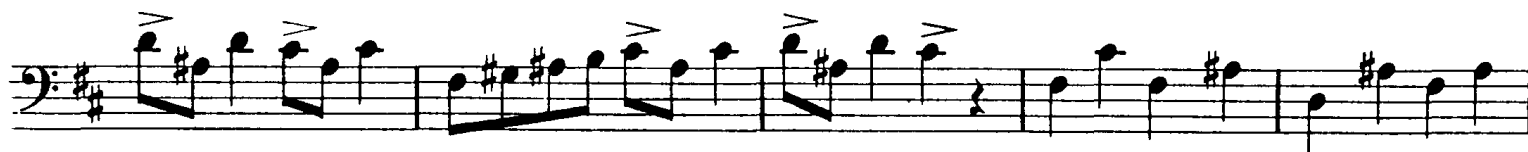
1

Violoncello.

IV.

Tanz in der Halle des Bergkönigs.

Alla marcia e molto marcato.



Violoncello.

7

The musical score for the Violoncello part on page 7 consists of ten staves. The key signature is G major (one sharp). The notation includes various rhythmic values, slurs, and dynamic markings.

- Staff 1:** Features eighth and sixteenth notes with accents. A dynamic marking of *p* is present.
- Staff 2:** Continues the melodic line. A dynamic marking of *ff* is present. The instruction **B Più vivo.** is written above the staff.
- Staff 3:** Continues the melodic line.
- Staff 4:** Continues the melodic line.
- Staff 5:** Continues the melodic line.
- Staff 6:** Continues the melodic line.
- Staff 7:** Continues the melodic line. A dynamic marking of *ff* is present.
- Staff 8:** Continues the melodic line. A dynamic marking of *ff* is present.
- Staff 9:** Continues the melodic line. A dynamic marking of *ff* is present.
- Staff 10:** Continues the melodic line. A dynamic marking of *ff* is present.

Additional markings include *stringendo al Fine* and various blue handwritten annotations (accents, slurs, and dynamic markings) on the final two staves.