



Robson Technologies, Inc.

A Solutions Based Approach to Meeting Today's Greatest Test Challenges

www.testfixtures.com

Robson Technologies, Inc. (RTI) applies solution based thinking to your test challenges and provides customizable interconnects to meet your long term testing needs. RTI is located in Morgan Hill, CA just south of silicon valley and provides in-house mechanical/PCB design, precision manufacturing, final assembly and quality assurance.

RTI has been providing solutions to all industries and for all test applications since 1989. In 2008, RTI purchased the exclusive manufacturing and sales rights for UltraTest International's (UTI) curve tracing test systems. RTI partners with the biggest names in the industry and provides reliable interfaces to major test systems or remote stand-alone bench top fixtures.

In House High Precision Machining



- HAAS and Daytron high speed CNC mills
- Tolerances down to ± 0.0005 inches
- High performance plastics and metals
- Hole spacing as low as 0.27mm at $0.003\text{mm}\varnothing$

In House Mechanical Engineering and PCB Design Services



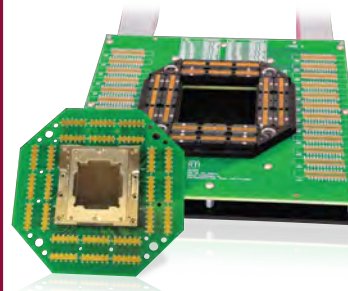
- Solid Edge 3D design
- GeoPath CAM systems
- Mentor PADs design
- CAM 350 layout
- Over 150 years combined electronic and mechanical design experience

Spring Pin Connector Savers



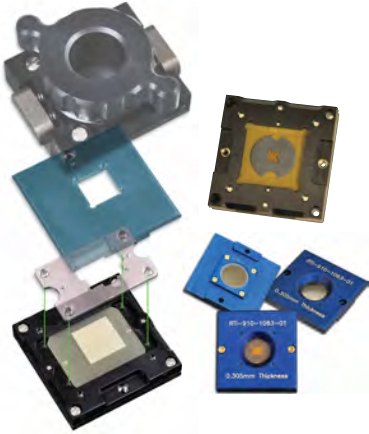
RTI's spring pin blocks can be designed to interface with many industry standard board-to-board connectors with pitches as small as 0.4mm contributing to the robustness and lifespan of the fixture. Spend less time replacing connectors and more time testing your DUT.

Motherboard / Daughterboard Interconnect solutions



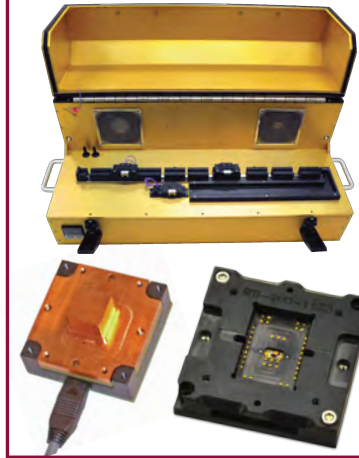
- Multiple footprints for all pin counts and test interfaces including 256 and 512 verifier boards, Octapogo and more
- Reduce time and money required to respin a new motherboard for each device size and/or pitch

Universal BGA and WLCSP Test Socket



- Test multiple packages of the same pitch up to the maximum drilled array size
- Pitches down to 0.3mm
- Quartz lid allows for optical access and 100% visibility of WLCSP with 95% transmissivity

Direct Device Heating, Cooling, and Temperature Regulated Chambers



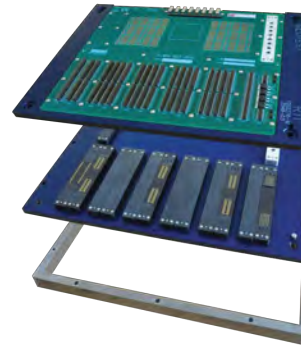
- Active heating copper slug in either lid or test socket base
- Floating thermocouple in test socket base that contacts exposed pad
- Convection heated and regulated test chamber for implantable devices

Automated Curve Tracing Test Systems



- Powered, unpowered, supply current measurement, and latch-up testing
- Compare known good devices to suspect parts for counterfeit detection
- Up to 6 busses and pin counts as high as 2160 on a mobile unit

Docking Interfaces to Popular 3rd Party Test Equipment



- MK2/MK4 load boards with verifier daughter card option (MK2)
- Geotest TS-900 PXI semiconductor system field configurable spring pin interface blocks
- Keithley, Hi-Level, Verigy, Credence and many more

Serving All Industries and Test Applications Worldwide

- Semiconductor
- Medical
- Aerospace
- Military
- Communications
- Networking
- Automotive
- Computers & Peripherals
- Consumer Electronics
- Energy & Agriculture
- Failure Analysis
- Counterfeit Detection
- Manual Production
- Automated Production
- Burn-In
- Radiation
- Thermal & Humidity
- Prototype Engineering
- Wafer Sort
- Implantable Simulation

Contact RTI Today to Discuss Your Latest Project or Product Idea



Robson Technologies, Inc.
135 East Main Ave. Suite 130
Morgan Hill, CA 95037
(408) 779-8008
rtisales@testfixtures.com