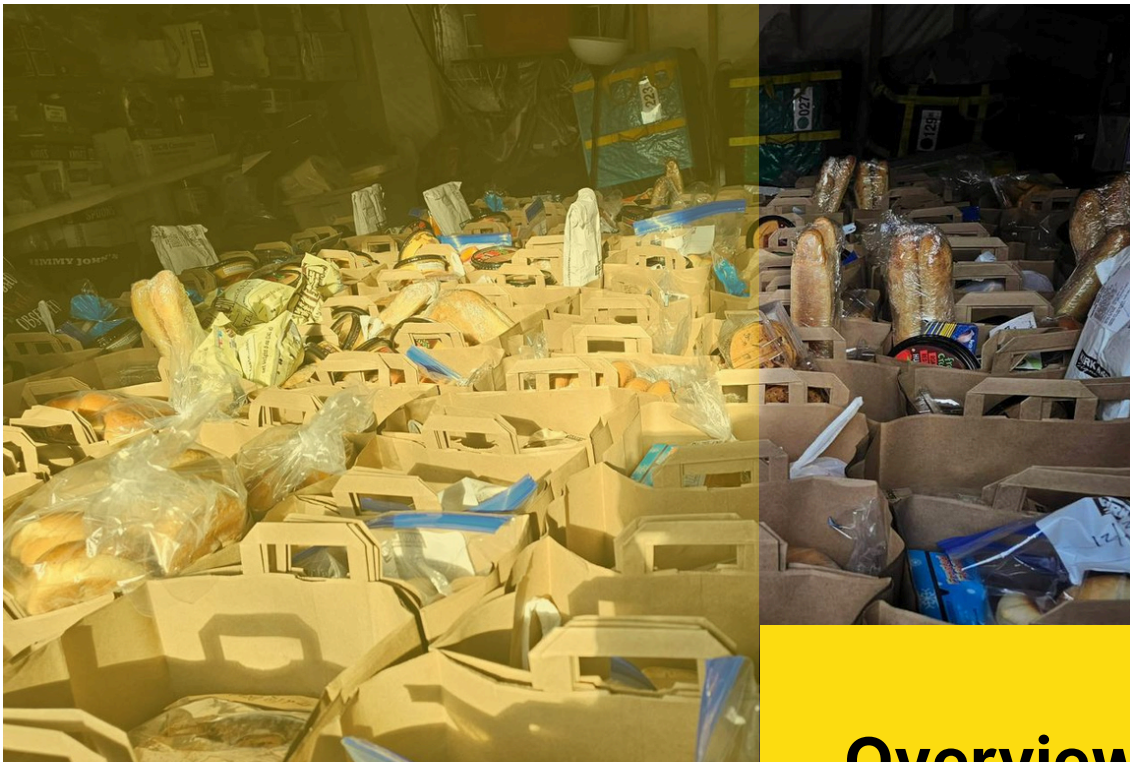




IMPACT REPORT

2025



Overview

A Brighter Day Outreach (ABDO) exists to drive positive social change through place-based initiatives, advocacy, youth development, and parental support in the Historic Hoskins, Thomasboro, and surrounding communities of Charlotte, NC.



In 2025, ABDO continued to grow as a trusted Community HUB—meeting urgent needs while building pathways toward long-term stability and opportunity.



Community Impact at a Glance (2025)

Over 5,500

individuals served annually



More than 2,500

households supported



350 families

served weekly through the Food Pantry

300+ youth

engaged annually through Break Every Chain

- Only organization addressing food insecurity in the Historic Hoskins Community
- Community HUB serving as a one-stop center for food, literacy, wellness, and support



Core Programs & Impact

Break Every Chain is a school-based and community-supported youth development program designed to disrupt the school-to-prison pipeline by strengthening literacy, behavior, confidence, and connection to school.

Program Model

- Operates at Thomasboro Academy and the Community HUB
- Serves 2nd–5th grade students
- Focus on literacy engagement, character development, mentorship, and social-emotional learning
- No tutoring model; activities are enrichment-based and relationship-driven

2025 Impact

- 300 students served annually
- Teacher behavior reports show improved classroom engagement and conduct
- Expansion of the Authors & Illustrators Program
- Published first student-created book: *Rainbow Flow*, written and illustrated by selected Thomasboro Academy students

Break Every Chain Program



Core Programs & Impact

The ABDO Community Food Pantry operates twice weekly, providing consistent access to food in a designated food desert. Families receive meats, produce, dry goods, prepared meals, and household essentials through a dignified drive-up model.



Community Food Pantry



2025 Highlights

- Pantry opened to the public on October 29, 2024
- 2,169 unduplicated families served since opening
- 204 families served in one day (Nov 25, 2025)
- 200 meals distributed in a single day (Nov 7, 2025)
- Heavy reliance from seniors, single parents, and working families

Key Partners



Core Programs & Impact

Montly Community Give-Back Program

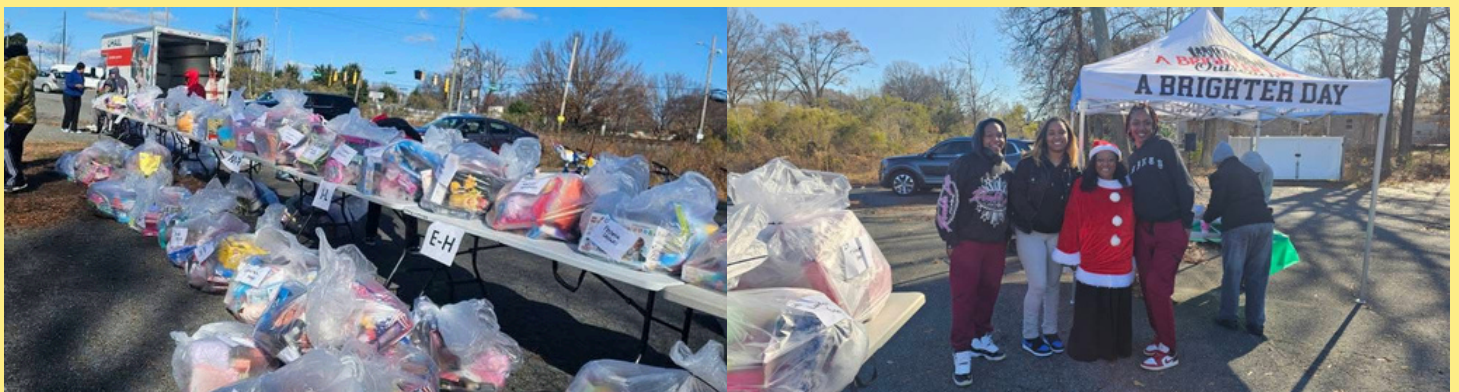


The Monthly Give-Back Program every third week of the month meets immediate family needs through food, hygiene items, diapers, clothing, and emergency assistance.



2025 Highlights

- Supported 117 families over a two-week period in partnership with Excel Peer Support Services
- Ongoing monthly distributions
- Critical support during crises (fires, displacement, emergencies)
- Opens to anyone (Historic Hoskins/Thomasboro and nearby areas)



Core Programs & Impact

Community HUB Services



The ABDO Community HUB is the heart of operations and includes:

Computer Lab

Digital access for youth and adults

Mental Health Room (in development)

Planned trauma-informed support

Mini-Library

Free books for children and families

Volunteer & Partner Space

Trainings, meetings, community events



CAPITAL & INFRASTRUCTURE

\$250,000 (received)
grant from Mecklenburg County

➔ **\$100,000**
toward HUB payoff

➔ **\$132,000**
for ADA compliance

➔ **\$18,000**
for administrative support

- Received Lowe's Hometown Grant to build the Food Pantry
- Ongoing capital campaign to fully pay off the HUB and expand services

TOTAL REVENUE \$279,643.26	NET INCOME \$107,525.75	TOTAL EXPENSES \$168,623.05
---	--	--

A Brighter Day Outreach is working to raise \$150,000 by August 2026 to complete ownership of its Community HUB and expand life-changing services for families in need.

Leadership & Community Trust



A Brighter Day Outreach is led by Beverly Knox Davis, President & Founder, with a leadership model grounded in proximity, lived experience, and responsiveness. Staff, board members, and volunteers remain deeply embedded in the community they serve.



A Brighter Day Outreach is guided by compassionate, community-centered leadership committed to service, integrity, and transparency. The organization has built strong relationships with local families, schools, volunteers, and partners through consistent presence and reliable support. By listening to community needs and responding with dignity-focused programs,



ABDO has earned trust as a safe and dependable resource. Its leadership prioritizes accountability, collaboration, and long-term impact, ensuring that every initiative strengthens hope, stability, and belonging within the community.



Looking Ahead to 2026

- *Expand Break Every Chain beyond Thomasboro Academy*
- *Launch summer youth programming*
- *Complete ADA upgrades*
- *Increase food pantry capacity*
- *Hire part-time mental health professional*
- *Deepen partnerships and volunteer engagement*

CAPITAL CAMPAIGN

Community Hub



We Need Your Support!



\$150,000

- To cover the remaining balance of the HUB mortgage

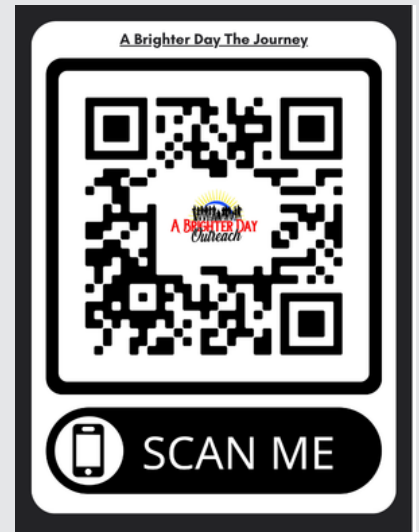
\$50,000

- For facility improvements and HUB updates, including safety compliance, accessibility enhancements, and community-use equipment

\$200,000

OUR GOAL

Be Our Donors/Sponsors



None of this impact is possible without our partners, funders, volunteers, and donors. Because of you, families are fed, children are empowered, and the Historic Hoskins community is **Never Forgotten Again.**

CONTACT
704-612-6390

E-MAIL
bnkdavis@abrighterdayoutreach.org

510 Sinclair Street,
Charlotte, NC 28208