



10 October 2025

A Brighter Day Outreach (ABDO)

Empowering Hope. Strengthening Communities.



Presented by:

Beverly Knox (Davis), President | Founder

bnkdavis@abrighterdayoutreach.org

• <https://abrighterdayoutreach.org>

Overview of ABDO

Established in 2020, A Brighter Day Outreach empowers underserved communities in Charlotte, NC (Hoskins and Thomasboro communities), by providing food assistance, youth mentorship, mental health support, and community development initiatives. Through programs like the Food Pantry, Community Give-Back and Break Every Chain Program, Mental Health Room, Computer Lab, the organization works to break cycles of poverty and create lasting change.

Mission statement

We drive positive social change through place-based initiatives, advocacy, youth development, and parental support, in the Historic Hoskins and Thomasboro Communities. Through comprehensive programs, we empower families to build resilience, foster stronger connections, and create pathways to success, ensuring a brighter future for the entire community.

Vision for a brighter, more equitable community

To have a striving community where every youth, seniors, and family located in or near Thomasboro – Hoskins area have secure placement and potential for growth.

Founding story and community roots (Thomasboro/Hoskins area)

A Brighter Day Outreach (ABDO) was founded from a deep love for the Thomasboro and Hoskins communities—two historic Charlotte neighborhoods rich in culture, faith, and resilience. Established by Beverly Knox Davis, ABDO began as a small neighborhood effort to bring hope and unity to families facing economic hardship, food insecurity, and limited access to community resources.

What started with simple acts of kindness, sharing meals, organizing clothing drives, and checking in on neighbors grew into a full-scale community ministry that uplifts residents through education, outreach, and celebration. ABDO's mission has always been grounded in the belief that brighter days begin when communities come together in love and service.



Demographics

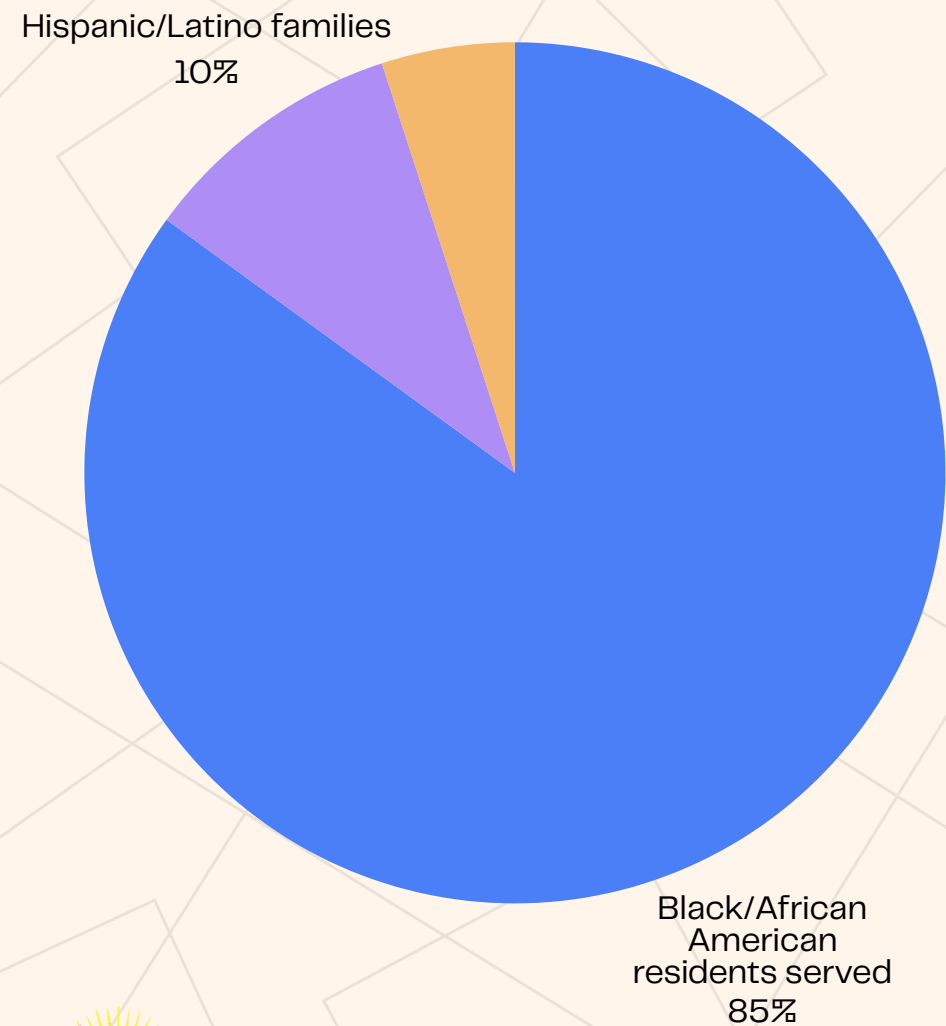
Primary Service Area:

Historic Hoskins, Thomasboro and surrounding Charlotte neighborhoods

- 78% Low-to-moderate income households
- 62% Families with school-age children
- 48% Single-parent households

Community Profile

- Black/African American residents served
- Hispanic/Latino families
- Other racial/ethnic groups



A Brighter Day Outreach serves families and youth in the Historic Hoskins community and surrounding Northwest Charlotte neighborhoods who are experiencing economic hardship, food insecurity, and limited access to supportive resources.

Over 5,500
individuals served annually

More than 2,500
households supported

350 families
served weekly through the Food Pantry

300+ youth
engaged annually through Break Every Chain

Team Overview



BEVERLY KNOX (DAVIS)
PRESIDENT | FOUNDER



KATE DYKSTERHOUSE
INTERIM VICE-PRESIDENT



SHAYLA HAMMONDS
PROGRAM MANAGER



MINNIE MCPHERSON
BEC-PROGRAM DIRECTOR



ASHLYN DAVIS
FOOD PANTRY MANAGER



AIKO MESIAS
SECRETARY/ADMIN



GERLIE RIVERA
BOOKKEEPER/TREASURER



TANEKA NICHOLSON
**BEC-ASSISTANT
PROGRAM DIRECTOR**



DAYANA VINCENT
ADMIN ASSISTANT



23DB PRODUCTIONS
SOCIAL MEDIA MANAGER

Our Impact at a Glance

- 18+ years of community service in Hoskins & Thomasboro
- Over 45,000 families served through our initiatives for over 18 years
- 300 children engaged through ABDO services inclusive of reading, technology, mental health and other services
- 350+ community members served weekly through the Food Pantry



18+
years of Service



300
children engaged through
ABDO services



45,000
families served for
the past 18 years



350+
community members
served

Our Core Programs

- Break Every Chain Program
- Community Food Pantry
- Community Give-Back Program
- Resource Center
- Community HUB
 - ➔ Mental Health Room
 - ➔ Computer Lab
- Mini-Library



Community Food Pantry

Food Pantry Provision

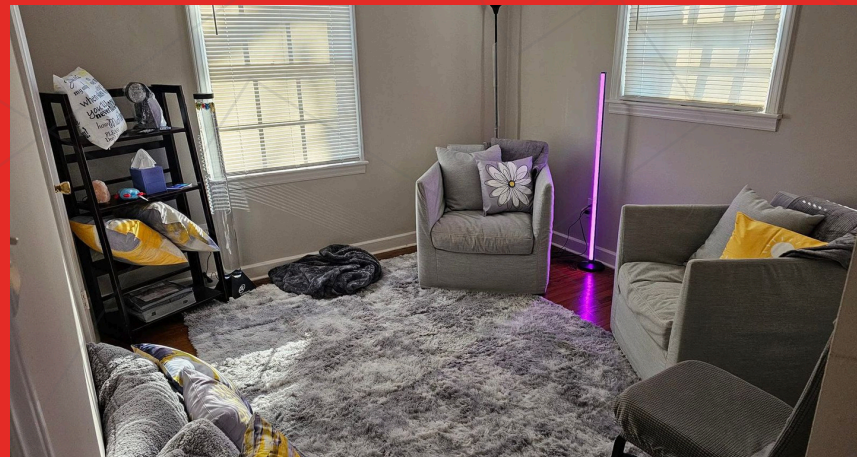


Community HUB

Mini Library



Break Every Chain Program



Mental Health Room (HUB)



Computer Lab



Give-Back Program



Break Every Chain Program (Youth Empowerment)

Focus:

Breaking the school-to-prison pipeline through literacy, mentorship, and creativity.

Activities:

- Literacy tutoring & small group reading
- Mentorship & character development
- Authors & Illustrators Workshops (“Rainbow Flow” published 2025)
- Family engagement & social-emotional learning

Impact: 300 students served annually

Partners and supporters can help by providing:

- Literacy materials and culturally relevant books
- Laptops, tablets, and student technology
- Student supplies and program materials
- Sponsorships and financial contributions
- Volunteers and mentors for youth sessions



Community Food Pantry

Purpose:

Fighting hunger, building dignity in Hoskins, Thomasboro and nearby communities.

Launched: October 26, 2024 (with Lowe's Hometown Grant)

Partners: Feeding Charlotte, Nourish Up, Costco, Our Daily Bread Ministries and Hearts United for Good

Impact:

- 7,500+ families served since opening
- 350 families weekly

Next Goal:

ADA compliance upgrade & cold storage expansion

Partner and support us by providing:

- Cold storage equipment (freezers/refrigerators)
- Shelf-stable and fresh food donations
- ADA accessibility improvements
- Pantry supplies and logistics support
- Financial sponsorships and grants
- Volunteer support for distribution days



Community Give-Back Program

Focus:

Providing essentials to families in need.

Activities:

- Hygiene & toiletry drives
- School supply & toy drives
- Thanksgiving & Christmas outreach

Recent Impact:

Partnered with Excel Peer and they're able to assist 117 families over a two-week period, culminating in our Community Give-Back event.



Partner and support us by providing:

- Hygiene and household essentials
- School supplies and youth incentives
- Holiday outreach support
- Event sponsorships and financial gifts
- Volunteers for Give-Back distributions



Mini-Library:

Encourages youth reading & lifelong learning

Computer Lab:

Improves digital access for job seekers and students

Impact:

- 300 children and 350 adults served yearly
- Partnership with Public Library Mobile Unit

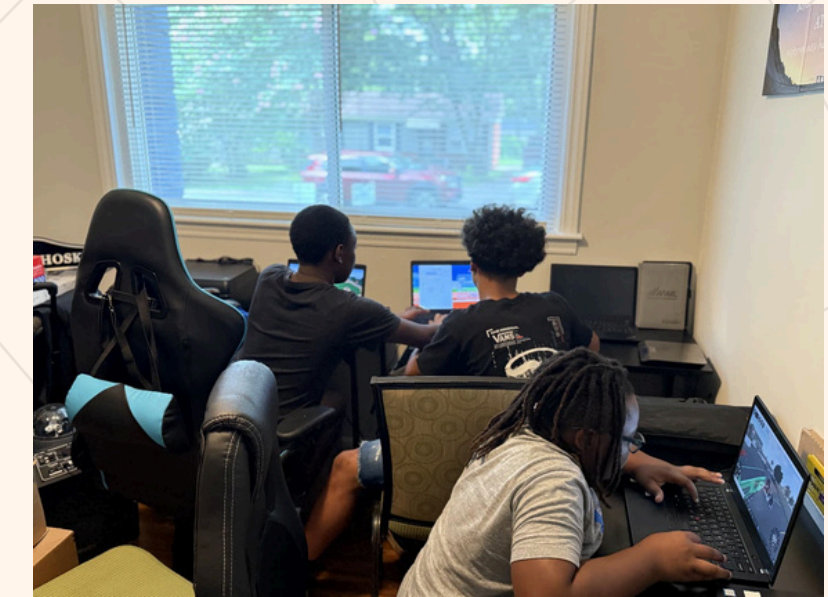


Partner and support us by providing:

- Children's books and culturally relevant reading materials
- Laptops, tablets, and computer equipment
- Educational software and digital learning tools
- Technology upgrades and maintenance support
- Volunteer tutors and digital literacy mentors
- Program sponsorships and funding support



Mini-Library & Computer Lab



Mental Health Room & Community HUB

Mental Health Room:

Safe, quiet space for youth & adults to decompress and connect with support services.

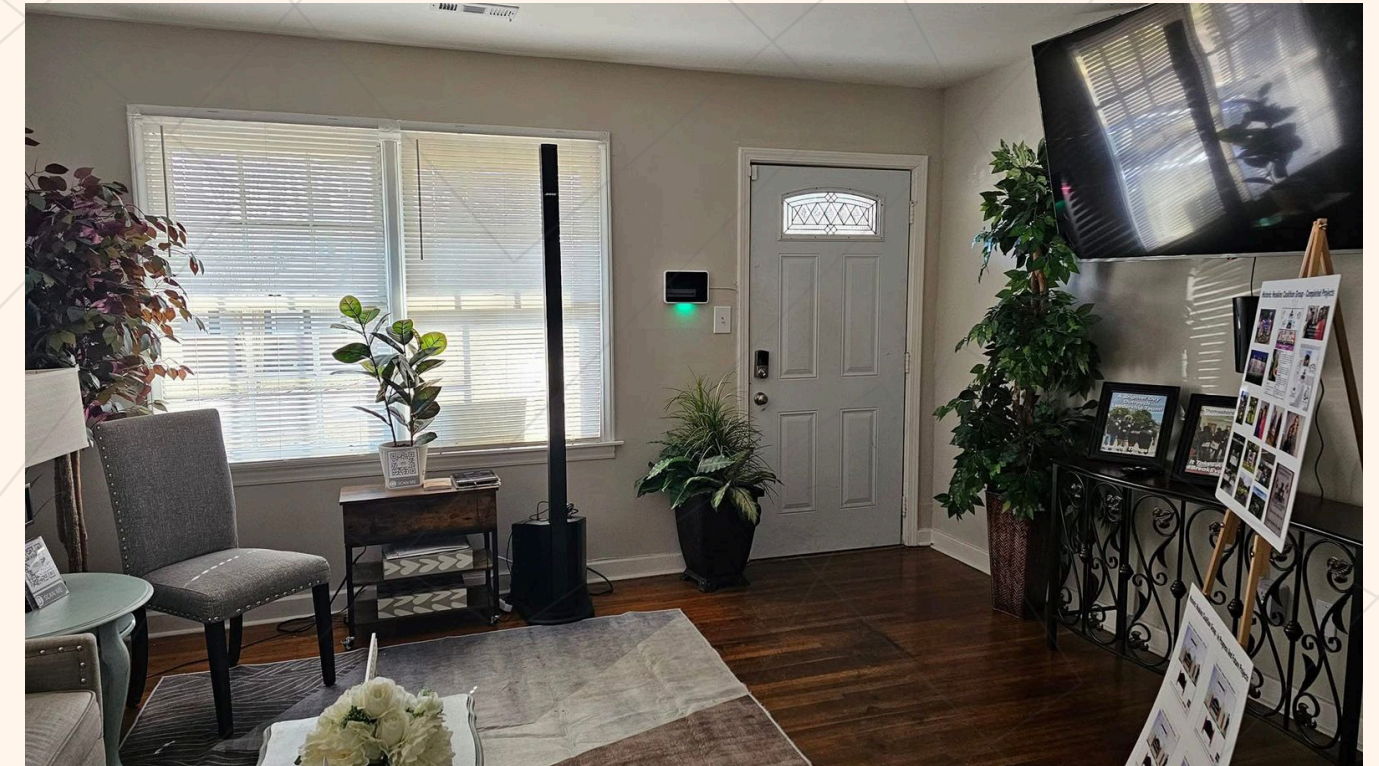
Community HUB:

The heart of ABDO - a welcoming, multi-use facility that unites all programs under one roof.

Visuals: Inside the HUB, community events, volunteers

Partner and support us by providing:

- Comfortable seating and calming room furnishings
- Wellness and sensory supplies for youth and adults
- Technology for virtual counseling and support services
- Program sponsorships and wellness funding
- Licensed volunteer professionals and support partners

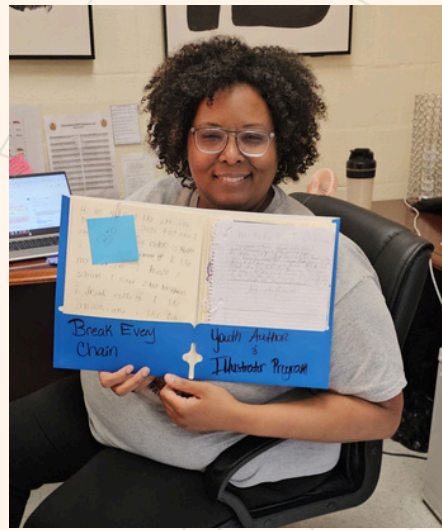
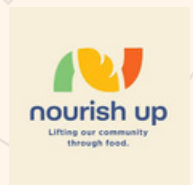


Our Partners & Collaborations

- Feeding Charlotte
- Hearts United for Good
- Our Daily Bread Ministries
- Nourish Up
- Costco
- Thomasboro Academy
- Walmart
- Public Library

- United Way
- MiLa (Mobile Internet Library)
- Excel Peer Support Services
- Lowe's Hometown Grant Program
- Girl Flow
- Historic Hoskins Coalition Group
- Reemprise
- Social Venture Partners (SVP)

- AmeriHealth
- Wells Fargo
- Crisis Assistance Ministry
- Freedom Communities
- West Side Community Land Trust
- Carewell of Charlotte
- Oakstreet Health
- Sam's Club



Future Vision

- Expand Break Every Chain to additional schools beyond Thomasboro Academy
- Fully upgrade the A Brighter Day Outreach Community HUB to address all ADA Compliance
- Fully PAY-OFF the Community HUB location and expand
- Grow our team
- Strengthen our Summer Programs
- Develop a Youth Podcast Program for storytelling and leadership
- Strengthen partnerships for mental health, health equity, and nutrition initiatives



Help Us Build Brighter Days in Historic Hoskins

A Brighter Day Outreach is expanding access to food, literacy, digital equity, and wellness through our Community HUB. We invite you to partner with us to deepen impact and reach more families in need.

Here's how you can take action today:

- Become a funding or program partner
- Donate technology, books, or essential supplies
- Sponsor a program or Community HUB initiative
- Volunteer your time and expertise
- Share our mission within your network

With your help, we can strengthen families, empower youth, and build a more connected community.





LET'S MOVE

THE WORK FOWARD - TOGETHER

Thank you for taking the time to learn about A Brighter Day Outreach and our commitment to strengthening families in Historic Hoskins and across West Charlotte.

We welcome the opportunity to continue the conversation and explore meaningful partnership.

Next Steps:



• **Schedule a Community HUB visit**

<https://calendar.app.google/bapgx4kW4tq2P9WN7>



• **Request our full impact report**

<https://drive.google.com/drive/u/0/folders/1x3IHc2uqkAHUFssRiDi5GMArSMUq6fUQ>



• **Discuss partnership or funding opportunities**

<https://drive.google.com/drive/u/0/folders/18MxCBvrA2XMgT1a0ZpYLMpzBK-GqQkCF>



• **Connect with our leadership team**

bnkdavis@abrighterdayoutreach.org [704-612-6390](tel:704-612-6390)

2026

<https://abrighterdayoutreach.org/>