



# LCHA Roundup

www.larimerhorseman.org

LARIMER COUNTY HORSEMAN'S ASSOCIATION

February 2025 0

## Mustang Companions

**LCHA February Meeting**  
**Thursday, February 6, 2025**  
**7:00 PM to 9:00 PM**  
**McKee 4H Building**  
**The Ranch**



By all means, don't forget this meeting.

### **Our Speaker** **Stephanie Swanson**

Hi, I'm Stephanie Swanson, Treasurer of Wild Rose Mustang Advocacy since 2019. A lifelong horse lover, I didn't actually start riding until I was 34, but I've been making up for lost time ever since. I got my first horse, the ever-dapper Gentleman Jack, soon after I started riding.

Gentleman Jack is still the main man in my herd which has grown to include two awesome mustangs, Dougie and Zephyr, both adopted from Wild Rose.



By day, I crunch numbers as a Business Officer at Colorado State University, but my true passion is using those same skills to help Wild Rose. Over the past couple of years, I've personally had the privilege of fostering nearly 15 Wild Rose mustangs as they transition into their new lives.

*See "Expanding My Setup" on page 2*

### *In this month's issue . . .*

Mustang Companions .....	page 1
Actions From The 2024 LCHA Survey .....	page 2
Events – February and March.....	page 3
Temporary Shelter.....	page 4
LCHA Texts to Members.....	page 5
Classified Ads .....	page 5
Sign Up for Your Event.....	page 6
The Card Shop .....	page 7

### *Expanding My Setup*

I'm currently working on expanding my setup with pens designed for ungentled mustangs, ensuring Wild Rose has even more suitable space for training in the future.

## Wild Rose

Founded in 2018, Wild Rose has already helped nearly 70 mustangs find their forever homes through our mission to foster, train, and rehome the American Mustang showcasing their innate talents and versatility. Our all-volunteer team is committed to showing the world just how versatile and talented these incredible horses are. Many of our mustangs arrive untouched by humans and understandably wary, but through low-stress gentling techniques, we show them that trust and partnership with humans is possible.

There are many misconceptions about the Mustang breed's ability to become an equine companion. Our history with training, rehoming, and showing Mustangs in National competitions proves without doubt that Mustangs can be a mount for competitive and leisure riders alike. I'm thrilled to be part of this journey and to share the exciting new ways we're working to showcase the amazing Mustang.

## We Have Heard

Yes, we have heard misconceptions about the Mustang breed. Now let's hear the facts from the people who know about these horses. It should be an insightful, information-filled, interesting evening.

**See you there.**

## Actions From The 2024 LCHA Survey

Thank you for your feedback. Read on to see how it is being used for 2025 planning.

LCHA is sending a \$400 donation to Fleet of Angels to be used for equines impacted by the CA wildfires.

*See "Rapid Response Database" on page 2*

### *Rapid Response Database*

LCHA is preparing a rapid response database to identify members who can provide temporary shelter in the event of a disaster. You may receive emails or a call asking for your information.

LCHA Board of Directors has formed a committee to identify a clinic to be held with the LCHA annual meeting in June. Please contact Bonnie Templeton (970-481-4307) if you wish to help choose. We are looking at ideas submitted from the survey and others you may like to talk about.

## Driving

Some LCHA members have expressed an interest in learning more about carriage driving. Raven's Roost Ranch, Wellington, (Sherry V and Gary S) will be hosting a Pleasure Driving Show put on by the Rocky Mountain Carriage Club. Come and learn or participate Saturday, June 28, 2025. We hope to have arena (ring) driving classes and obstacle driving classes. We will use the American Driving Society Pleasure Driving guidance.

## Trail Riding

There will be a pilot program to break trail rider groups into a "brisk" riding group and a "relaxed" riding group. We've observed over the years some riders like to move along briskly while others like a more relaxed approach. Watch the trail ride calendars to see on what occasions this type of ride will occur.

There will be a new "Trail Ride Buddy" program. We've heard that some members or horses may not be ready for an LCHA sanctioned trail ride due to a variety of factors such as training level, conditioning or fitness, desire for a shorter ride, or confidence level. Please contact Susan Kurzweil (970-619-0966) if you would like to work with a Trail Ride Leader to schedule a "Buddy Trail Ride."

## Trail Ride Leaders

Are you interested in becoming a Trail Ride Leader? Please contact Bonnie May (970-217-1113) if you are interested. First step is a Lunch and Learn Training to get started. All present Trail Ride Leaders are also encouraged to attend. It will occur Friday, March 21 at 11:00 AM at *Me Oh My Coffee & Pie*, LaPorte. Must RSVP. In Person Only.

**THANK YOU AGAIN FOR YOUR FEEDBACK!**

# Events – February and March

## February

We have our planning meeting in late January, so we have plans for just one February event: our February program meeting.

LCHA Roundup is a newsletter of the Larimer County Horseman's Association (LCHA), P.O. Box 270375, Fort Collins, CO 80527-0375.

Editor: Hugh Templeton, 970-622-0982  
hughtmpltn@gmail.com

### The LCHA Board of Directors:

#### Officers

President, Susan Kurzweil, .....970-619-0966  
Vice President, Bonnie Templeton.....970-622-0982  
Secretary, Sherry Vaughn, .....517-852-3458  
Treasurer, Pati Morel.....'970-488-0041

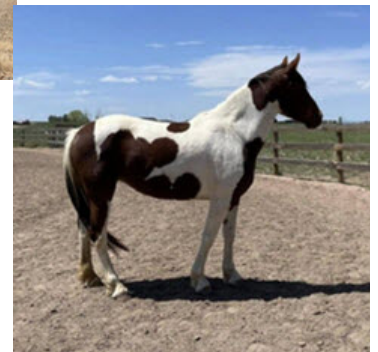
#### Committee Managers and Members at Large

Rachael Cohen .....720-273-4798  
Karen Finfer .....303-928-9873  
Lucinda Loudon, Member at Large .....303-726-2389  
Annette Price, Member at Large .....970-785-9090  
Gary Sibert, Member at Large .....517-852-4486  
Hugh Templeton, Member at Large .....970-622-0982

If you have ideas, comments, or questions about LCHA, horses, the horse industry in Larimer County, or this newsletter, send them to the editor.

**THURSDAY, February 6– Program Meeting:  
Mustang Companions**

**7:00 PM to 9:00 PM  
McKee 4H Building  
The Ranch**



*Left -- Zenobia (Zen) and Right -- Athena are both mustangs.*

Stephanie Swanson will tell us some of the misconceptions we have probably heard about the mustang breed, and will then give us the facts. She will speak about mustangs as great companions for us, no matter our riding choices.

Some LCHA members have mustangs, and are welcome to discuss them with Stephanie during the meeting.

Come on out and find out about this wonderful horse breed.

## March

We have the results of the January Planning meeting, but we haven't had time to list all events. Read your March *LCHA Roundup* for the complete list. However, we can now list some events for March. Read on.

**Thursday, March 6 – Educational Meeting**, Details to be announced

*See "Policies and Procedures" on page 4*

*Policies and Procedures*

**Wednesday, March 12 – Evacuation Training,  
Policies and Procedures**  
7:00 PM to 9:00 PM (We seldom go that long.)  
**ZOOM**

This class explains how call-outs work: Who can call us out, what we need to know about the call-out, what we need to know about the animals we transport, and more. **All new team members must take this class.** Current members may take the class as a refresher. Bonnie Templeton will send a Zoom invitation to all members -- new and current, before the class.

**Friday, March 21 – Trail Ride Leaders' Meeting**

Bonnie May  
11:00 AM at *Me Oh My Coffee & Pie*, LaPorte.  
Must RSVP. In Person Only

A "Lunch and Learn Training" for those interested in becoming a trail ride leader. Bonnie has requested that current trail ride leaders also attend.

## Temporary Shelter

The idea for Temporary Shelter came out of the High Park Fire. So many people needed to evacuate their animals and so many animals were trapped. LCHA volunteers helped rescue animals from fire areas with burns on their legs and feet. We had an idea to prevent that. What if we got animals out of the fire area *before* an Evacuation was declared. We joined together with Northern Colorado Back Country Horsemen to organize a service for the members of both groups.

Once the Sheriff's Office has declared a mandatory Evacuation for an area, evacuated animals in that area must be taken to The Ranch or to another designated facility. However, *before* a mandatory evacuation is declared, we can help members get their animals out and take them wherever we want.

*See "How Temporary Shelter Works" on page 4*

*How Temporary Shelter Works*



*Don't wait for mandatory evacuation -- call early when you need help. LCHA/BCH Emergency Shelter service is a way to keep your large animals safe.*

### How It Works.

If you are in an area threatened by fire, flood, or some other disaster, or an area that has received pre-evacuation messages, you call me, Bonnie Templeton (970-622-0982), and tell me your situation.

- How many horses do you have?
- Do you have other animals that need to come with them?
- Do any of your animals have special needs?
- Do you need additional trailer assistance?

I will get the details from you and start calling other members who are in a safe zone and might have room to take your animals.

In the meantime, you pack up hay, food, medications, instructions, and anything else they might require.

I will put you directly in touch with the member who will provide shelter for your animals.

If you need transportation help, our evacuation team will help. You should keep the provider apprised of your situation and move your animals back home when it is safe.

*See "Providers" on page 5*

## How it Works for Providers

When I get a call for temporary shelter, I begin calling members to see who can take the animals.

This year we are working on a spreadsheet to speed up the process. I need to know who can and can't take animals, so that I don't waste valuable time calling people who can't. So we will be emailing members to find out the answers to the following questions:

- Can you take animals at your place?
- How many can you take?
- Could you take animals besides horses?
- What is your type of shelter (pasture, round pen, sheds, stalls, runs)?
- Do you need additional hay?

When arranging temporary shelter, I will call and I will confirm your answers to see that they are still accurate. Sometimes conditions change and that is OK.

## Don't Hesitate

Some members have hesitated to call for help because they would feel badly if they activated the Temporary Shelter service and the fire never actually got to their house. That is OK. We want you to act early to get your animals out before the situation deteriorates. Once a mandatory evacuation is officially declared, we cannot help.

Bonnie Templeton  
LCHA Vice President

## LCHA Texts to Members

A couple of years ago, a blizzard arrived one hour before a scheduled LCHA educational meeting. We frantically phoned people to cancel the meeting.

After this, the Board said there has to be a better way.

*See "Texts" on page 5*



We set up a texting service so that we could send immediate texts to all members. We use it to remind members of meetings and for emergency situations. The texting service we use requires that users OptIn to receive texts. I cannot add a user unless they have specifically said they OptIn to the service.

Users may also Optout. Those of you who are not currently receiving the texting service will receive an email asking you to OptIn or OptOut. Please reply.

If you OptIn, please include the phone number you want the texts to go to.

## Classified Ads

At **Mountain Magic Ranch**, Joe and Kim Andrews stress safety, balance, communication, and unity. We provide foundation training for young & old horses, and young & not so young humans. Our lessons build a proper foundation through the use of proper ground work exercises that prepare you and your horse for correct balance, movement, and better use of self. To receive a wealth of knowledge, call today for private lessons at MMR and/or your location. Also barefoot trimming by Joe. Contact us at 970-613-0121 [www.mountainmagicranch.com](http://www.mountainmagicranch.com)

*See "Classified Continued" on page 6*

*Classified Continued*

**Larimer County Horseman's Association** is looking for new members to join in the equestrian fun. Are you looking for some real horsey friends for rides, education, and community events? If so, we would like very much for you to join us. Check our website at [www.larimerhorseman.org](http://www.larimerhorseman.org) or go to our Facebook page for more information at [www.facebook.com/larimerhorseman](http://www.facebook.com/larimerhorseman). We are a non-profit and we also love new volunteers. Happy Trails!

---

Classical Horsemanship <https://www.classhorsemanship.com/> 970-215-3330  
 msorentino@classhorsemanship.com **Classical Horsemanship** <https://www.classhorsemanship.com/> 970-215-3330  
 msorentino@classhorsemanship.com 2546  
 Boettcher Farm Ct, Fort Collins, CO 80524

---



**No matter how you do it, sign up**

## What's the Deal with "Limit"?

Wilderness areas, properties owned by the city of Fort Collins, and Red Mountain Open Space have a "12-heartbeat rule": a group cannot include more than 12 heartbeats when using trails in these areas.

When riding our horses, the rule limits our groups to 6 riders (plus 6 horses with hearts) to meet the 12-heartbeat rule. However, if we have significantly more than 6 riders who want to ride, we can split them into 2 or more groups, each group including 6 riders (1 ride leader plus 5 others). The second group must leave the trail head 20 to 25 minutes after the first so that they do not merge with the first group.

When "Limit" is 4 horse trailers, it means that the parking space can hold only 4 horse trailers (tightly packed). However, we encourage "trailer pooling" if more than 4 people want to go on the ride. Actually, we encourage "trailer pooling" for any ride. The benefits are obvious.

For all rides except the Christmas Caroling on Horseback, bring your lunch (unless your ride leader tells you otherwise). You will have lunch somewhere on the trail.

*See "Educational Programs" on page 7*

## Sign Up for Your Event

---

### **Please! Please! Please! Sign up for events in advance (especially events that involve riding):**

- For any weekend ride, sign up by the end of Thursday before the ride.
- For any week day ride, sign up at least two days in advance.
- For some events, earlier sign-up may be required.

### Why?

If we need to cancel an event, your ride leader can get in touch with you to let you know before you drive to the location. You won't use gasoline or time waiting for an event that isn't going to happen. Also, your event leader needs to know if anyone is coming: If no one signs up, the leader may cancel or reschedule the event.

And, if you have any special concerns or circumstances (for example, it is your horse's first ride with a group), your leader can plan to deal with the situation in the best possible way.

### Educational Programs

## LCHA Educational Programs

LCHA offers a program meeting on the First Thursday of each month, except June, July, August, and December. Occasionally, program meetings occur on different days, at different times, and at different locations. All members are invited, and the public is invited, to any program meeting. We usually meet at the McKee 4H Building at The Ranch, but some meetings occur at different locations. Watch your newsletter and email for further information about meetings.

Programs involve in-person meetings. We also try to present the programs in Zoom, but cannot guarantee that viewers will see items shown by a presenter: we recommend attending these programs in person,

Program meetings typically run from 7:00 to 9:00 PM.

Before each educational meeting the LCHA newsletter, *LCHA Roundup*, will publish program details.

## LCHA Board Of Directors Meetings

The Larimer County Horseman's Association Board of Directors meets on the second Friday of every month, except December. All Board meetings are open to all LCHA members and to the public.

## The Card Shop

On the Wings of a Horse

Annette Price  
Equine Gestalt Coach  
annettepri@gmail.com  
onthewingsofahorse.com

On the Wings of a Horse

Dragonfly Farm  
Platteville, CO  
970.785.9090

Mountain Magic Ranch

Horse Training  
Riding Lessons

Joe and Kim Andrews

101 So. C.R. 29  
Loveland, CO 80537

(970) 613.0121  
mountainmagicranch.com

**K's**  
Trailer Parts & Service, LLC  
(307)632-0600

Keith Wright  
Owner

4194 West 5th Street  
Cheyenne WY 82007  
elkhunter010@hotmail.com

Office: 307-632-0600  
Fax: 307-632-0601  
www.kstrailerparts.com


**EQUINE MEDICAL SERVICES**  
3021 West County Road 64 · Fort Collins, CO 80524

Excellence in Performance Horse Care  
Including field & in-clinic reproductive services & surgery

For Appointments and Information  
**(970) 568-9445**  
Fax **(970) 568-0705**  
[www.emsvet.com](http://www.emsvet.com)

Dr. Allen Landes

24 HOUR EMERGENCY SERVICE  
970-578-9090



LECLAIR EQUINE  
JD LECLAIR DVM

PO Box 1321  
BERTHOUD, CO 80513

LECLAIREQUINE.COM  
LECLAIREQUINE@GMAIL.COM



**Bonnie May**  
Broker/Associate



**RESIDENT REALTY**  
224 Chuckwagon Lane  
Livermore, CO 80536

bonnie.may724@gmail.com  
970-217-1113 Talk or Text

Website:  
www.bonniemayrealestate.com



**Cowgirl Candy Store**

Lanette Pritchard  
719-469-3949  
6635 W. 28th Street  
Greeley, CO 80634

lanette@cowgirlcandystore.com  
www.cowgirlcandystore.com

CBD Horse Pellets



**Cito's Rescue**

Ruth Altman, DVM, CRPM  
970-689-6045

www.citosrescue.org



Rescuing & rehoming at risk horses to rebuild hope



**Victoria Harms, LCSW**  
720-927-7297

**Stable Elements PLLC**  
Counseling & Psychotherapy

stableelementshealth@gmail.com | Berthoud, CO 80513  
Equine & Nature Therapy | stableelements.clientsecure.me

Megan Sorentino  
Riding Instructor & Horse Trainer  
<https://www.classhorsemanship.com/>  
970-215-3330

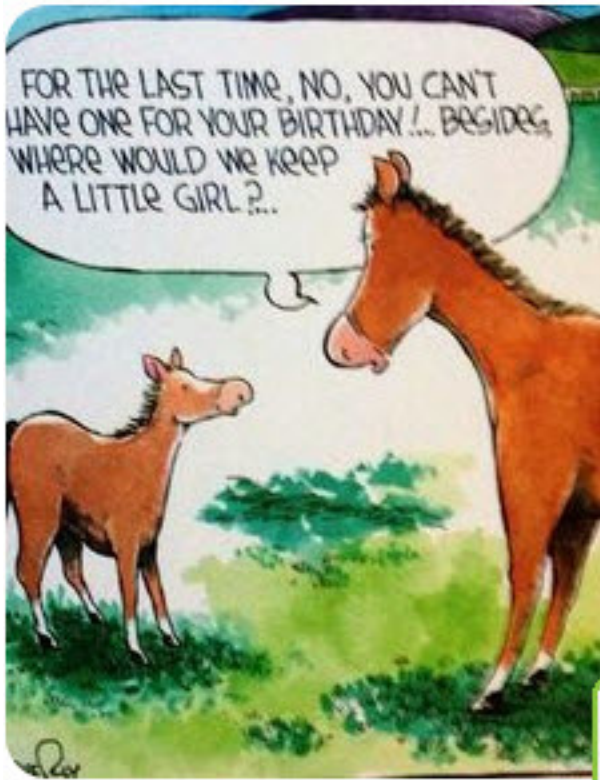


**CLASSICAL HORSEMANSHIP**  
*Harmony with Horses*



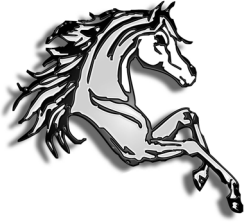
Laugh a little, or at least giggle







# LCHA Roundup



Larimer County Horseman's  
Association  
P.O. Box 270375  
Fort Collins, Colorado 80527-0375

---

52 Years of Service

