



LCHA Roundup

www.larimerhorseman.org

LARIMER COUNTY HORSEMAN'S ASSOCIATION

September, 2025 0

Training Mammals

LCHA Meeting

September 11

7:00 PM to 9:00 PM

McKee 4H Building, The Ranch

Hi everyone; This past spring, five LCHA members chose to audit an Applied Equine Behavior class at CSU. The reason we wanted to go is because it was taught by Dr. Sarah Matlock. Dr. Matlock was kind enough to speak at our educational meeting in October 2024. Her talk was so fun and informative a group of us couldn't resist attending her class. Our final exam was a project and presentation which we will be presenting at our September educational meeting on September 11th 7PM at the McKee 4H Building, The Ranch.



LCHAClass (left to right) Rachael Cohen, Dr Sarah Matlock, Annette Price (in front), Joy York, Susan Kurzweil, Deb Schaueremann

We weren't sure what to expect from the class. After all, we are lifetime horsewomen. From the first class, we were hooked. It was so fascinating to learn about how horses perceive the world and how they express themselves.

Good Science

There is so much good science to support how our horses learn and why they behave like they do, and how we can provide better training and environments for them.

Example

Something as simple as leading your horse with confidence and intention can improve your horse's trust in you. For example one of our LCHA auditors said "After years of being lucky enough to have an incredibly well trained and polite horse, I had become messy about the little things like leading. It was humbling and enlightening that when I improved my behavior, even our old reliable boy became more relaxed and attentive."

We will share some of the class topics and show that, **yes, you can teach an old dog new tricks.** We hope to see you at our September educational meeting.

In this month's issue . . .

Training Mammals.....	page 1
Exciting for 2025 -- Save the Date!	page 2
YOU CAN JOIN IN THE FUN!!!.....	page 2
Join Us.....	page 5
Judged Obstacle Challenge: What's New This Year?.....	page 5
Everybody Can Help	page 5
Events – September and October	page 6
Chicken Fried Trail Ride	page 8
An Unusual Trail Section	page 9
Classified Ads	page 10
The Card Shop	page 10

See "Good Science" on page 1

Exciting for 2025 -- Save the Date!

What: A Judged Obstacle Challenge consisting of 2 kinds of event:

- An in-hand event (leading your horse) in the arena
- An in-saddle event outside the arena.

You can chose to enter the in-hand event of 8 obstacles, the in-saddle (riding) event (with 8 other obstacles), or both events.

At each obstacle, you can also choose to take one of these levels:

- Novice, or
- Intermediate, or
- Advanced path.

Do one event or both, at what ever path you choose – whatever is fun and comfortable for you. At this obstacle last year, our horses met a two-headed dragon.



The dragon sat in the middle of the barrel.

Details

When: September 20, 2024.

Where: Raven's Roost Ranch, Wellington, Co. (Relax, it's an easy drive from anywhere.)

See "Why" on page 2

Why

Why: Fund Raising Event for LCHA.

Who: LCHA and horse-loving public.

What's needed now: Volunteers to make this event fun, a time to learn, and a fundraising success.

If you can help, please contact Sherry V. at 517.852.3458 or at sherryevaughn@outlook.com. We need help organizing: directing parking, registering folks and horses, judging, with lunch, and other details.

YOU CAN JOIN IN THE FUN!!!

ANY horse people. Any age. Any riding level (beginner, intermediate, or advanced). Any horse breed.

Anybody who would like to know how well they know their horse, and wants to have fun learning what they might not know yet.

What Fun? This Fun, Different – Don't Miss It

Yes, we will repeat this type of LCHA activity this year.
Remember this:

What? Judged Obstacle Trail Challenge

When? Saturday, September 20

**Where? RAVENS' Roost Ranch,
16687 N County Road 9, Wellington**

What In The World Is a Judged Obstacle Trail Challenge?

It is a way to have fun with your horse. You can test yourself and your horse through obstacles. Obstacle? Yes.

See "Obstacle Types" on page 3

Types of Obstacle -- In Hand

- You are on foot
- Halter and lead rope required
- You lead your horse through these obstacles.

At each obstacle you can choose one of three levels, each level increasing in difficulty.

Here Is an example:

Maze and Pivot:



The obstacle is a pattern of poles.

Level 1: Novice: Walk horse through the maze.

Level 2: Intermediate: Walk horse through the maze, before exit turn on forehand (hind end yield), and then back through the exit.

Level 3: Advanced: Walk horse to mid-point of maze, then turn on forehand 180 degrees at midpoint, and then back the rest of the maze.

The judge will record the difficulty level you chose, and the points you and your horse achieved at that obstacle.

Some of the obstacles are relatively easy; others, not so much. It depends on you and your horse, the skills you have built together, and the trust you have in each other.

There will be 8 in-hand obstacles.

Types of Obstacle -- In Saddle

- You are mounted.
- Saddle and reins required.
- You ride through the obstacles.

At each obstacle you can choose one of three levels, each level increasing in difficulty.

Here Is an example:

Ranch Gate

LCHA Roundup is a newsletter of the
Larimer County Horseman's Association
(LCHA), P.O. Box 270375, Fort Collins, CO
80527-0375.

Editor: Hugh Templeton, 970-622-0982
hughtmpltn@gmail.com

The LCHA Board of Directors:

Officers

President, Susan Kurzweil,970-619-0966
Vice President, Rachael Cohen720-273-4798
Secretary, Sherry Vaughn,517-852-3458
Treasurer, Pati Morel.....'970-488-0041

Committee Managers and Members at Large

Jean Beucler, Member at Large.....970-231-2219
Karen Muhler, Member at Large.....303-324-5454
Janet Pancoast, Member at Large970-391-9718
Annette Price, Member at Large970-785-9090
Gary Sibert, Member at Large517-852-4486
Bonnie Templeton, Member at Large970-622-0982
Hugh Templeton, Member at Large970-622-0982

If you have ideas, comments, or questions about LCHA, horses,
the horse industry in Larimer County, or this newsletter, send
them to the editor.



Sorry, the gate in this picture is not the gate in the challenge.

Level 1 Ride to the gate and touch it with your hand.

Level 2 Open the gate and ride through it.

Level 3 Open the gate, ride through it, and close it.

The judge will record the difficulty level you chose, and the score you and your horse achieved at that obstacle.

Some of the obstacles are relatively easy; others, more difficult. It depends on you and your horse, the skills you have built together, and the trust you have in each other.

There will be 8 in-saddle obstacles. Obstacle number 6, Gambler's Choice, is likely to be the most fun of all.

Sign Up Now

It's not too late (of course not, yet). It's also not too early. **We encourage you to sign up (register) online.**

To register for either the in-hand, in saddle, or both sets of obstacles:

Go to the LCHA web site:

<https://www.larimerhorseman.org>

On the home page, You will find a copy of the flyer, followed by

LCHA JUDGED OBSTACLE CHALLENGE REGISTER HERE

Downloads

Download pdf flyer for posting. Download png flyer for sharing on Facebook, Download waiver to bring with you to event. Download description of obstacles with pictures.

2025 Flyer for LCHA Obstacle Trail Challenge (pdf)

DOWNLOAD

2025 Flyer for LCHA Obstacle Trail Challenge_1 (png)

DOWNLOAD

Joint waver (pdf)

DOWNLOAD

2025 obstacle descriptions with pictures (pdf)

DOWNLOAD

Use the **LCHA JUDGED OBSTACLE CHALLENGE REGISTER HERE**

button to register for the Obstacle Challenge>

You can also download a description of the obstacles at each level.

Yes, you can register on site, On site Registration opens at 8:00 AM Mountain Time and closes at 10:00 AM Mountain Time. If you register on site, you will need to pay by cash or check.

Join Us

You might be surprised at what your horse will or won't do. You might be delighted (or dismayed) at some of the surprises.

Come. Find out. September 20 at the LCHA JUDGED OBSTACLE TRAIL CHALLENGE.

Judged Obstacle Challenge: What's New This Year?

Times

Early arrival is open at 7:30 AM.

On site registration opens at 8:00 AM and closes at 10:00 AM.

Obstacles

Most, if not all, the **obstacles are new** this year. The final in-saddle obstacle, Gambler's Choice, lets you choose from among several obstacles – some easier than others – that you want to face. You will have an allotted time to complete the obstacles you choose. It will be fun to ride, and to watch – that's for your fan base to have fun as well. By the way, spectators are free.

See "Food Truck" on page 5

Food Truck

Food Truck

Yes, we will have a **FOOD TRUCK** for you. SpicygirlSCO.com offers a variety of street tacos. Many of the tacos and other offerings include gluten free choices. We will provide drinks and desserts.

You can have lunch when you complete your in-hand, in-saddle, or both, sets of obstacles. You can lunch when you get hot and tired. You can lunch when the competitor you came to watch is finished.

We will provide shade, not in the barn but under canopies.

Scoring and Awards

We have greatly improved our scoring so that it will be complete in the afternoon. So, we will have an **AWARDS CEREMONY AT 2:00 PM**. Competitors and their fans can see how they did in the challenge, and can read the judges' comments on their work

Everybody Can Help

Need Helpers

The Judged Obstacle Trail Challenge is a big event. **We need volunteers.**

Hey, it is a day of fun, meeting new people, and making a difference. And it is free to volunteers. How can you ask for anything more?

Join us for the Judged Obstacle Challenge, Saturday, September 20, at Ravens' Roost Ranch, 16667 County Road 9, Wellington. Don't worry, it is an easy drive from almost anywhere in the county, and the day is well worth the trip.

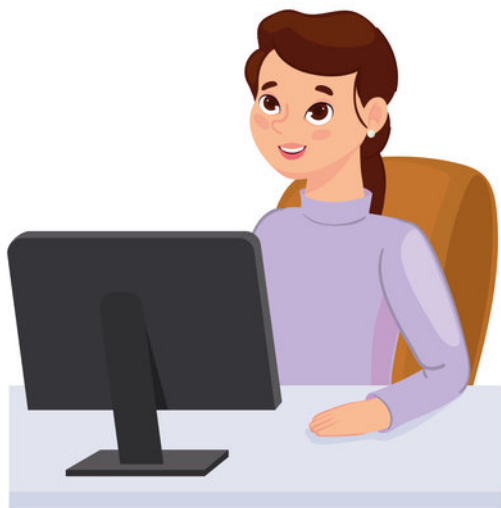
Spread the Word

The Obstacle Trail Challenge is going to be both a fun and a learning experience, but only if people come. We have to get the word out.

See "Post" on page 6

Post

Can each of you please post the flyer on all of your social media sites? You can download the flyer from <https://www.larimerhorseman.org>. If you post to FaceBook, use the .png flyer downloaded from the LCHA website.



Use **YOUR** social media skills to promote the LCHA **JUDGED OBSTACLE CHALLENGE** by posting the flyer on your site.

Can you share the information with your friends and contacts? Other organizations that you are connected with?

If each of us spreads the word, it will be successful.



If you are not going to bring your horse and compete, **please volunteer to help staff** it. It will be work, but we will also have fun.

Special Need -- Judges

We have a special need for people to train as judges. This will involve a Zoom session and we will also have a practice session on Friday the 19th.

Besides judging, there are lots of other ways to help. For example, we need volunteers to serve as "runners," people who carry judges' scoring sheets to the scoring area for tabulation. We also need Volunteers need to help direct people to parking, and various other duties.

To volunteer, contact Sherry Vaughn (sherryevaghn@outlook.com) 517-852-3458 or Bonnie Templeton (templetb@gmail.com) 970-622-0982

Events – September and October



September

Thursday, September 11, Educational Meeting

Speakers:

7 to 9 PM

Estes Park Room

McKee 4H Building, The Ranch

Friday, September 12, Ramsay-Shockey Open Space

Arrive 10:00, Ride 10:30

Walk, Trot, Gait

Bring your lunch

177 acres of ponderosa pine and mixed shrubs on moderately steep slopes, with rocky, shallow soils and interesting rock outcrops provide incredible vistas and wide open spaces. Here are habitat and movement routes for many kinds of wildlife, and if you keep a sharp eye out, you will most likely see signs of elk or deer.

The trail offers 4 miles of natural surface.

See "Special Need -- Judges" on page 6



NOTE: Coggins Test required.

Contact Susan Kurzweil at 970-669-0966.

Parking is limited at the trail head. Your ride leader will arrange trailer pooling, if possible.

Saturday, September 20, Judged Obstacle Challenge

Ravens' Roost Ranch
16687 N County Road 9
Wellington, CO

The biggest, most important event of the year. See the articles on pages 1 through 5, and then come to the Judged Obstacle Challenge, either as a volunteer or as a participant. See you there.

October

Thursday, October 2, Educational Meeting

Speakers:
7 to 9 PM
Estes Park Room
McKee 4H Building, The Ranch

Saturday, October 11, Trail Ride, Sawmill Ponds

Location to be determined

See "Lady Moon" on page 7

Lady Moon

Friday, October 24, Trail Ride, Lady Moon

Arrive 10:00, Ride 10:30

Walk, Trot, Gait

Bring your lunch

This trail involves a short, gentle hike through open, dry ponderosa pine forest and large, attractive meadows. The entire area is scenic, with much open Ponderosa pine forest, outcrops, and promontories along the trail.



Directions: From Ted's Place, follow US-287 north for 10.5 miles to "The Forks" at Livermore. Turn left onto the Red Feather Lakes Road (CR-74E). At mile marker 20.8 you will see the entrance to the trail head on the south (left) side of the road.

NOTE: Coggins Test required.

Contact Karen Finfer at 303-9028-9973

Chicken Fried Trail Ride

The Chicken Fried Trail Ride this year, led by Susan Kurzweil, started at 4:00 PM at Bobcat Ridge Natural Area. It was a typical Colorado evening with storms threatening us from over the mountains. Yes, it sprinkled on us for the first few minutes, but then stopped and the clouds started to break up a little. We rode the Valley LOOP Trail, which is about four miles. By 6:00 PM we returned to the parking lot.

Four of us started out: Dr. Cynthia Van Farowe on Marley, Tatiana Caine on Cowboy, Karen McGee riding Walker on what turned out to be his last ever trail ride, and myself on Romeo. We were lucky enough to have Karen Finfer on Suave join us along the way, along with Hugh Templeton who arranged a Volunteer Ranger shift for that evening and met us back in the parking lot.

We had a lovely potluck dinner, with cold chicken and lots of laughter. It was a fun evening. Please consider joining us next year!

Editor's Note: The following article is for your information, especially if you happen to like hiking Larimer County Trails. This trail is 1.8 miles one way. It is not a loop, so you need to follow it back to your starting point. Do not be deceived by the map, which shows a connector trail from one end of the Bay-to-Bay trail to the other. The trail is NOT open to horses. Read, and enjoy.



Susan Kurzweil
LCHA President

An Unusual Trail Section



Left: Moving north, the stepping stone area is 3 or 4 yards long. You can easily see the beginning and the end.

Right: Following the trail a few feet beyond the first short section of stepping stones, you find a much longer stretch of stepping stones that make the trail. This section of trail extends about 70 yards.



The hillside slid down slope toward Horsetooth Reservoir. The slide brought many-sized rocks to water's edge. Building trail across this slide meant moving rock, breaking rock, arranging rock large and small, tamping the rock to form a solid base, finding flat rock usable for stepping stones, and then laying the stepping stones flat and fitted (more or less) next to other stepping stones to make a stone walkway across the rock slide area.

The work is well done.

Question for You

Those of you who have ever worked on trails, especially those who have done trail maintenance with us, what do you think of this? Would you like to have been on the crew that built this? I would.

However, I personally would not ride or walk a horse across it. What do you think? Would you?

Classified Ads

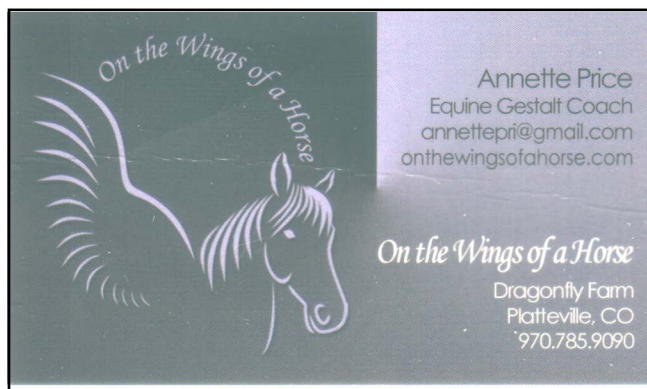
At **Mountain Magic Ranch**, Joe and Kim Andrews stress safety, balance, communication, and unity. We provide foundation training for young & old horses, and young & not so young humans. Our lessons build a proper foundation through the use of proper ground work exercises that prepare you and your horse for correct balance, movement, and better use of self. To receive a wealth of knowledge, call today for private lessons at MMR and/or your location.

Also barefoot trimming by Joe. Contact us at 970-613-0121
www.mountainmagicranch.com

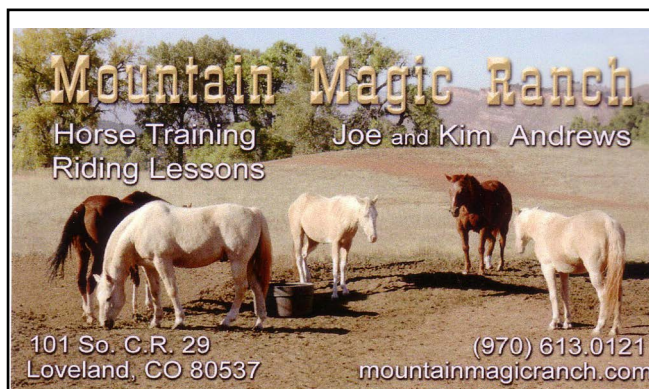
Larimer County Horseman's Association is looking for new members to join in the equestrian fun. Are you looking for some real horsey friends for rides, education, and community events? If so, we would like very much for you to join us. Check our website at www.larimerhorseman.org or go to our Facebook page for more information at www.facebook.com/larimerhorseman. We are a non-profit and we also love new volunteers. Happy Trails!

Classical Horsemanship <https://www.classhorsemanship.com/> 970-215-3330
msorentino@classhorsemanship.com **Classical Horsemanship** <https://www.classhorsemanship.com/> 970-215-3330
msorentino@classhorsemanship.com 2546 Boettcher Farm Ct, Fort Collins, CO 80524

The Card Shop



On the Wings of a Horse
 Annette Price
 Equine Gestalt Coach
annettepri@gmail.com
onthewingsofahorse.com
 On the Wings of a Horse
 Dragonfly Farm
 Platteville, CO
 970.785.9090



Mountain Magic Ranch
 Horse Training Joe and Kim Andrews
 Riding Lessons
 101 So. C.R. 29
 Loveland, CO 80537
 (970) 613.0121
mountainmagicranch.com



K's
 Trailer Parts & Service, LLC
 (307) 632-0600
 Keith Wright
 Owner
 4194 West 5th Street
 Cheyenne WY 82007
elkhunter010@hotmail.com
 Office: 307-632-0600
 Fax: 307-632-0601
www.kstrailerparts.com



EQUINE MEDICAL SERVICES
 3021 West County Road 64 · Fort Collins, CO 80524
 Excellence in Performance Horse Care
 Including field & in-clinic reproductive services & surgery
 For Appointments and Information
 (970) 568-9445
 Fax (970) 568-0705
www.emsvet.com
 Dr. Allen Landes

24 HOUR EMERGENCY SERVICE
970-578-9090



LECLAIR EQUINE
JD LECLAIR DVM

PO Box 1321
BERTHOUD, CO 80513

LECLAIREQUINE.COM
LECLAIREQUINE@GMAIL.COM



Bonnie May
Broker/Associate



RESIDENT REALTY
224 Chuckwagon Lane
Livermore, CO 80536

bonnie.may724@gmail.com
970-217-1113 Talk or Text

Website:
www.bonniemayrealestate.com



Cowgirl Candy Store
Lanette Pritchard
719-469-3949
6635 W. 28th Street
Greeley, CO 80634

lanette@cowgirlcandystore.com
www.cowgirlcandystore.com

CBD Horse Pellets



Cito's Rescue
Ruth Altman, DVM, CRPM
970-689-6045

www.citosrescue.org

 Rescuing & rehoming at risk horses to rebuild hope



Victoria Harms, LCSW
720-927-7297

Stable Elements PLLC
Counseling & Psychotherapy

stableelementshealth@gmail.com | Berthoud, CO 80513
Equine & Nature Therapy | stableelements.clientsecure.me

Megan Sorentino
Riding Instructor & Horse Trainer
<https://www.classhorsemanship.com/>
970-215-3330



CLASSICAL HORSEMANSHIP
Harmony with Horses

LCHA Roundup



Larimer County Horseman's
Association

P.O. Box 270375

Fort Collins, Colorado 80527-0375

53 Years of Service

A decorative horizontal line consisting of a series of small, overlapping, wavy shapes, resembling a stylized wave or a series of small humps.