



# INSTALLATION MANUAL

**Summary of Installation:** This lift is bolted onto the swim deck of a boat using a receiving plate under the swim deck and a top anchoring plate. Once the top and lower receiving plate is installed, the lift is then set into the receiving plate just under the swim deck. Some boats will have various swim deck sizes. Adjustments of bolt sizes and transom bulkhead fittings will need to be specified before installation. Swim Decks are also of different heights from the water line, and variations of lift lengths will also need to be specified before installation.

## **PARTS LIST:**

1. Lift apparatus, Includes : (cylinder, guide rails, top and bottom plate, and vertical adjustment tube)
2. Foot Platform
3. Top Receiving Plate
4. Lower Receiving Plate
5. Plate Carriage Bolts - #8 Stainless (Deck Thickness Determines Bolt Length)
6. Hoses - #6 hydraulic hoses (Deck Size and distance to pump determines hose length)
7. Fittings - #6 hydraulic fittings - (2) #6 x 3" Bulkhead Fittings, (2) #6 couplings
8. Hydraulic Pump
9. 12V Marine Battery - Includes Battery Cable Connections to the Battery
10. Remote Control Transmitter and Receiver

**LIFT APPARATUS**



The Lift apparatus - The Lift apparatus is a one piece apparatus that connects to a hitch system like on a car or truck. Once the receiving plates are mounted the vertical lift apparatus slides in place and secured with set screws.

One set or two hoses then connect to the hoses from the lift apparatus and ran under the swimdeck back through the transom and connected to the hydraulic pump.



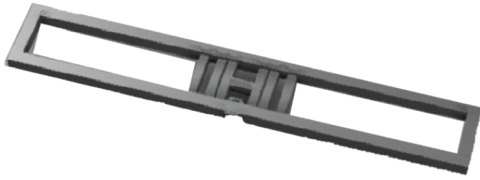
Through Hull Bulkhead fittings are used to connect hoses through the transom



The hydraulic pump unit or power unit with a 12vdc marine battery is used to power the lift apparatus using remote control to operate the lift moving it up and and down as needed. Positioning of the battery and pump unit is behind the transom anywhere there is room. Use of anchor staps and battery anchors are recommended.

Wireless remote control FOB's are used to operate the lift in both up and down directions.





Foot plate Frame— The foot plate frame is attached to the cylinder and guide posts after the lift is in position. The cylinder threads into the footplate and the guide posts bolt in place.



The receiving hitch system is bolted to the swimdeck and allows for the lift to slide into it and secured with set screws. Adjustments using the set screws allow for precise positioning of the lift before use.

Two lengths of carriage bolts are available for bolting the receiving plates to the swim deck. Use the appropriate length of carriage bolt for the thickness of your swim deck.

Step 1: Determine the type and size of swim deck you have for lift installation. Determine if the swim deck is flat on the top and bottom side. Most swim decks have a flat surface underneath which will allow for the receiving plate to be bolted on. Swim Deck also may have a ladder under a cover or door on top of the deck. Which would be where the lift top plate will be installed once the ladder assembly is removed.

Step 2: Remove existing Ladder assembly and Install the Lift receiving plates. Bolt through the swim deck using the supplied carriage bolts . Drill holes through the swim deck where the top and bottom plates are positioned. Use the carriage bolts to bolt through the top plate, through the swim deck and through the lower receiving plate to “sandwich” the swim deck between the top and bottom receiving plates. If the existing ladder assembly is in the covered space, remove the ladder within the space and install the top plate in that covered space.

Step 3: Install the lift horizontal hitch receiver. Slide the horizontal hitch receiving part into the lower receiving plate. Position the square tubing receiver, so that it extends past the swim deck, allowing for the vertical lift post to fit inside it. Once the horizontal receiver post is in position. Tighten the set screws on the receiving plate to secure the horizontal post in place.

Step 4: Install the lift. Slide the vertical anchor post of the lift into the vertical receiving post positioned in step 3. Adjust the vertical post upward if necessary to make it even with the swim deck. Hold in position and tighten the vertical receiving tube set screws against the vertical post of the lift. The lift is now set in position and ready to connect the hydraulic hoses.

Step 5: Next, determine where the hydraulic power pump unit will be located. The unit should be positioned closely behind the transom, and close to the lift location, where there is space to access it and where you can feed 12vdc power to it. If you are not using the boat's house batteries, then allow for another 12vdc marine battery to be positioned close to the hydraulic pump unit. Once decided on where the power hydraulic pump unit will be located, determine how far the unit is to the hose connections on the lift. Hydraulic hoses are provided, to accommodate 6' of distance from the lift to the power hydraulic unit. (NOTE: if more than 6' of hose is required, would me using longer hoses, and would need to be requested). Fill the hydraulic reservoir with hydraulic fluid (marine grade preferred), fill to all the way to about 1" below top of tank.

Step 6: Next, Locate where the hydraulic hoses will go through the transom. Drill two 1/2" hoses side by side through the transom. Install the supplied 3/8" through hull bulk head hydraulic fittings. Tighten the fittings on each side of the transom. Attach hoses from the inside to the hydraulic pump unit . Connect 12vdc power to the Pos + and Neg— to the power hydraulic unit. Then attach hoses from the outside bulkhead fittings to the lift hoses. Hoses should be female ends connected to male fittings. (Note: if lift travels opposite of the FOB button indications, then swap hoses either at the pump or at the lift.

Step 7: Locate and attach the remote control FOB controller, connect it to the lanyard provided, and connect the other end of the lanyard to the loop at the top of the lift. Locate the other FOB provided and attach the FOB holding bracket anywhere close the back of the boat and close to the swim deck, for an additional remote operation of the lift, if ever necessary.

The Lift is now installed and ready for operation. Press the up and down functions on the FOB several times. As the hydraulic fluid starts to fill the lift cylinder it will start to move. Once the lift platform moves fully up and down, it is ready for lift operation. Enjoy!