



# INSTALLATION MANUAL

Version 1, Powder Coated Steel

**Summary of Installation:** This lift is bolted onto the swim deck of a boat using a receiving plate under the swim deck and a top anchoring plate. Once the top and lower receiving plate is installed, the lift is then set into the receiving plate just under the swim deck. Some boats will have various swim deck sizes. Adjustments of bolt sizes and transom bulkhead fittings will need to be specified before installation, and acquired locally. Swim Decks are also of different heights from the water line, the lift can be adjusted out from the deck and also lowered from the deck if needed.

## **PARTS LIST:**

1. Lift apparatus, Includes : (Upright Lift, Foot Platform, Hydraulic Pump and accessories)
2. 2. Foot Platform
3. Top Anchoring Plate
4. Lower Receiving Plate
5. Receiving Arm
6. Plate Carriage Bolts - #8 Stainless (Deck Thickness Determines Bolt Lengths may vary)
7. Hoses - #6 hydraulic hoses (Deck Size and distance to pump determines hose length)
8. Fittings - #6 hydraulic fittings - (2) #6 x 3" Bulkhead Fittings, (2) #6 couplings
9. Hydraulic Pump
10. Remote Control Transmitter and Receiver

**LIFT**



The Lift apparatus - The Lift apparatus is a one piece apparatus that connects to a hitch system like on a car or truck. Once the receiving plates are mounted the vertical lift apparatus slides in place and secured with set screws. The foot Platform is not connected to the lift upon delivery, It will need to be connected when received.

One set or two hoses then connects to the hoses from the lift apparatus and ran under the swim deck back through the transom and connected to the hydraulic pump.



Through Hull Bulkhead fittings are used to connect hoses through the transom, Bulk head lengths may vary. So these are NOT included.

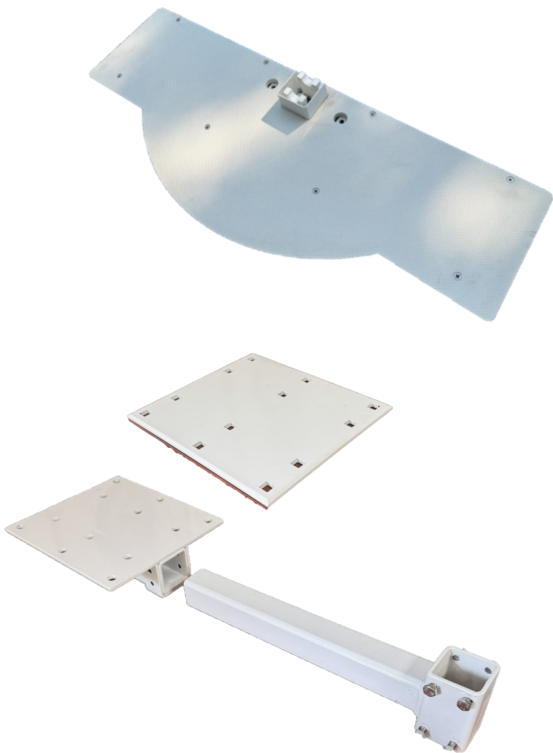


The hydraulic pump unit or power unit with a 12vdc marine battery is used to power the lift apparatus using remote control to operate the lift moving it up and and down as needed. Positioning of the battery and pump unit is behind the transom anywhere there is room. Use of anchor staps and battery anchors are recommended.

**A DEDICATED BATTERY FOR THE LIFT IS RECOMMENDED AND IS SOLD SEPARATELY. BATTERIES WOULD ADD TO SHIPPING COSTS.**

Wireless remote control FOB's are used to operate the lift in both up and down directions.





Foot plate platform will need to be connected to the lift's cylinder rod, since it is shipped disconnected from the lift. Laying the lift on its side on a table is best. Pull the cylinder rod out a few inches. Turn the cylinder rod back and forth and it will pull out as long as the hoses are clear and the ends are not covered. Once out a few inches, position the foot platform to the threaded end of the rod and rotate the platform tight to the rod. Pull down the two guide posts and bolt them to the foot platform.

The receiving hitch system is bolted to the swim deck and allows for the lift to slide into it and secured with set screws. Adjustments using the set screws allow for precise positioning of the lift before use.

Carriage bolts are given for bolting the receiving plates to the swim deck. Use the appropriate length of carriage bolt for the thickness of your swim deck. Thickness of decks may vary. Correct length of carriage bolts are available locally.

**Step 1:** Determine the type and size of swim deck you have for lift installation. Determine if the swim deck is flat on the top and bottom side. Most swim decks have a flat surface underneath which will allow for the receiving plate to be bolted on. Swim Decks also may have a ladder under a cover or door on top of the deck. Which would be where the lift top plate will be installed once the ladder assembly is removed. Or select another area and leave the existing ladder in place.

**Step 2:** Drill and Bolt through the swim deck using the supplied carriage bolts. Drill holes through the swim deck where the top and bottom plates are positioned. Use the carriage bolts to bolt through the top plate, through the swim deck and through the lower receiving plate to "sandwich" the swim deck between the top and bottom receiving plates. If the existing ladder assembly is in the covered space, remove the ladder within the space and install the top plate in that covered space. Recommend selecting another space and leaving the existing ladder in place.

**Step 3:** Install the lift receiving arm. Slide the horizontal hitch receiving arm into the lower receiving plate like you would a trailer hitch. Position the square tubing arm, so that it extends past the swim deck, allowing for the vertical lift square to drop inside it. Once the receiver arm is in position, Tighten the set screws on the receiving plate to secure the receiving arm in place.

**Step 4:** Install the lift. Slide the vertical square anchor base post of the lift into the receiving arm positioned in step 3. Adjust the vertical post upward if necessary to make it even with the swim deck. Hold in position and tighten the vertical receiving tube set screws against the vertical post of the lift. The lift is now set in position and ready to connect the hydraulic hoses.

**Step 5:** Next, determine where the hydraulic power pump unit will be located. The unit should be positioned closely behind the transom, and close to the lift location, where there is space to access it and where you can set your dedicated battery next to it (recommended). If you are not using a dedicated battery for the lift, and want to use your house batteries you may need to increase the wire size or gauge to handle the current. Once decided on where the power hydraulic pump unit will be located, determine how far the unit is to the hose connections on the lift. Hydraulic hoses are provided, to accommodate 6' of distance from the lift to the power hydraulic unit. (NOTE: if more than 6' of hose is required, would need longer hoses, and would need to be requested or purchased locally. Fill the hydraulic reservoir with hydraulic fluid (marine grade preferred), fill to all the way to about 1" below top of tank.

**Step 6:** Next, Locate where the hydraulic hoses , connect the hoses provided to the lift hoses, connector couplings are provided. Attach hoses to hydraulic pump unit, the pump ports are labeled "up" and "down" The "up" side should go to the lower lift port and the "down" side port will go to the upper hose of the lift. Connect a dedicated 12vdc battery to the Pos + and Neg— to the power hydraulic unit.

**Step 7:** Locate and attach the remote control FOB controller, connect it to the lanyard provided on the lift, and connect the other end of the lanyard to the loop at the top of the lift. Locate the other FOB provided and attach the FOB holding bracket anywhere close the back of the boat and close to the swim deck, for an additional remote operation of the lift, if ever necessary.

The Lift is now installed and ready for operation. Press the up and down functions on the FOB several times. As the hydraulic fluid starts to fill the lift cylinder it will start to move, keep filling the tank with fluid so that the system is full. Once the lift platform moves fully up and down, with the tank topped off, it is ready for lift operation. Enjoy!