

INSTRUMENTS/MATERIALS

1. PRE-OP PREP

- Field Dissector Inspection Gauge (not pictured)
- Providone-Iodine 2.5% and 5% Solution
- Speculum

2. MARK CENTER

- Sterile Marking Pen (not pictured)
- 11 mm Zone Marker
- Sinskey Hook

3. MARK INCISION & PLACEMENT OF INTACS INSERTS

- Sterile Marking Pen
- Incision and Placement Marker (IPM)
- Pachymeter

4. MAKE INCISION

- D&K Calibrated Guarded Diamond Knife with 15° Angled Blade

5. CREATE POCKETS AT INCISION

- Pocketing Hook

6. EVALUATE POCKETS

- Symmetric Glide

7. POSITION VCG

- Vacuum Centering Guide (VCG)
- Incision & Placement Marker
- Sterile Tubing

8. CREATE INTRASTROMAL TUNNELS

- Vacuum Centering Guide (VCG)
- Symmetric Glide
- Dissectors (CCW & CW)

9. PLACE INTACS INSERTS

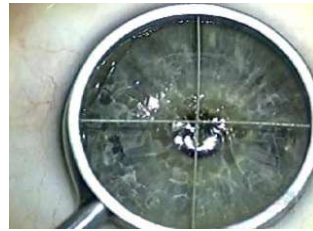
- Intacs Inserts Forceps
- Intacs Inserts Carrier
- Sinskey Hook

10. ASSESS WOUND CLOSURE

- 10-0 or 11-0 Nylon Suture
- Suture Instruments



STEP 1 - PRE-OP PREP
(Speculum)



STEP 2 - MARK CENTER
(11 mm Zone Marker)



STEP 2 - MARK CENTER
(Sinskey Hook)



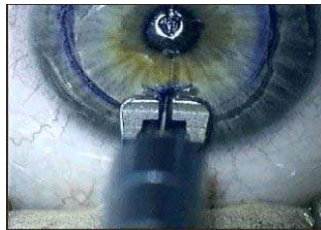
STEP 2 - MARK CENTER
(Sinskey Hook)



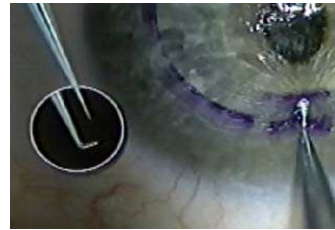
STEP 3 - MARK INCISION & PLACEMENT OF INTACS INSERTS
(Incision & Placement Marker - IPM)



STEP 3 - MARK INCISION & PLACEMENT OF INTACS INSERTS
(Take Pachymeter Reading)



STEP 4 - MAKE INCISION
(D&K Diamond Knife)



STEP 5 - CREATE POCKETS AT INCISION
(Pocketing Hook)



STEP 6 - EVALUATE POCKETS
(Symmetric Glide)



STEP 7 - POSITION VCG
(Vacuum Centering Guide - VCG)



STEP 8 - CREATE INTRASTROMAL TUNNELS
(Vacuum Centering Guide - VCG)



STEP 8 - CREATE INTRASTROMAL TUNNELS
(Symmetric Glide)



STEP 8 - CREATE INTRASTROMAL TUNNELS
(Dissectors CCW and CW)



STEP 9 - PLACE INTACS INSERTS
(Intacs Inserts Forceps/Carrier)



STEP 9 - PLACE INTACS INSERTS
(Forceps Inserting Intacs into Eye)



STEP 9 - PLACE INTACS INSERTS
(Sinskey Hook)



STEP 10 - ASSESS WOUND CLOSURE
(10-0 or 11-0 Nylon Ophthalmic Sutures)

**FOR A COMPLETE
STEP-BY-STEP
SURGICAL GUIDE,
PLEASE REFER TO THE
SURGICAL TRAINING
MANUAL**

ADDITION TECHNOLOGY, INC.
950 Lee Street, Suite 210
Des Plaines, IL 60016 (1-877-888-5372)
www.additiontechnology.com