



OFFICE OF PROCUREMENT

Marc Elrich
County Executive

Avinash G. Shetty
Director

SOLICITATION AMENDMENT #3
RFP # 1169193
July 2, 2024

PAGE 1 of 2 FOR THE PROCURMENT OF: Construction Services for Noyes Library for Young Children -
Rehabilitation and Renovation

ALL SOLICITATION AMENDMENTS MUST BE ACKNOWLEDGED BY THE OFFEROR PRIOR TO THE
HOUR AND DATE SPECIFIED IN THE SOLICITATION (AS AMENDED) FOR RECEIPT OF
OFFERS. FAILURE TO ACKNOWLEDGE AN AMENDMENT MAY BE CAUSE TO REJECT THE
PROPOSAL.

DESCRIPTION OF AMENDMENT:

NOTE: DUE TO AN ERROR UPLOADING TO BID-NET, NUMEROUS ATTACHMENTS FOR
DOWNLOAD WERE NOT MADE AVAILABLE. THIS AMENDMENT SIMPLY UPLOADS THE
ATTACHMENTS FOR DOWNLOAD THAT WERE INTENDED TO BE INCLUDED WITH
AMENDMENT #2.

Change #1 – Replace Drawing C-3 Grading and Utility Plan from the solicitation with 1169193_C-3_Grading and Utility
Plan_REVISED, available as a separate download with this solicitation amendment. This was also included in amendment 2.

Change #2 – Replace Drawing C-3A Site Details from the solicitation with 1169193_C-3A_Site Details_REVISED, available as
a separate download with this solicitation amendment.

Change #3 – Replace Drawing C-3B Right of Way Utility Phase 1 from the solicitation with 1169193_C-3B_Right of Way
Utility Phase 1_REVISED available as a separate download with this solicitation amendment.

Change #4 – Replace Drawing L-1.1 Hardscape Plan from the solicitation with 1169193_L-1.1 Hardscape Plan_REVISED
available as a separate download with this solicitation amendment.

Change #5 – Replace Drawing L-1.3 Wall Details Plan from the solicitation with 1169193_L-1.3 Wall Details Plan
_REVISED available as a separate download with this solicitation amendment.

Change #6 – Replace Drawing L-1.5 Hardscape Site Details from the solicitation with 1169193_L-1.5 Hardscape Site
Details_REVISED available as a separate download with this solicitation amendment.

Change #7 – Replace Specifications Section 12 93 23 Trash and Recycling Receptacles from the solicitation with
1169193_Specs Section 12 93 23_Trash and Recycling Receptacles_REVISED available as a separate download with this
solicitation amendment.

THERE ARE NO OTHER CHANGES.

Office of Procurement

27 Courthouse Square • Rockville, Maryland 20850 • 240-777-9900 • 240-777-9956 TTY • 240-777-9952 FAX

www.montgomerycountymd.gov

RFP 1169193
 Construction Services for Noyes Library for Young Children - Rehabilitation and Renovation
 Solicitation Amendment 2
 Revised C-3

CURVE	RADIUS	ARC LENGTH	CHORD LENGTH	CHORD BEARING
C1	1190.00	107.81	108.45	N 87°58'39" E
C2	1215.00	112.85	111.55	N 35°50'12" W

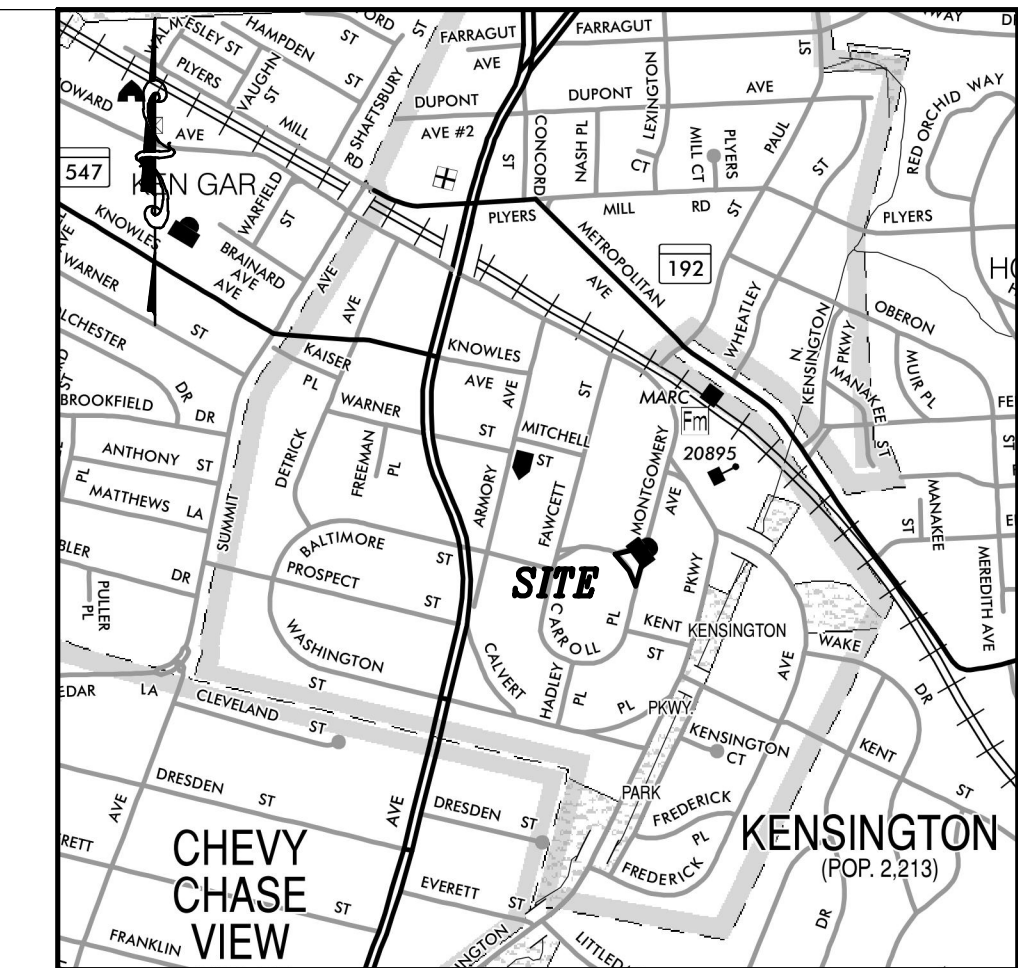
ZONING SUMMARY
 PARCEL: P728
 SUB DIVISION: 0015
 ZONE: R-50
 LOCATION: TOWN OF KENSINGTON

SETBACKS
 FRONT YARD SETBACK: 25' MIN REQ. 2', 1.2' AND 13.1'
 SIDE SETBACK: 8' N/A
 REAR YARD SETBACK: 20' N/A

BUILDING HEIGHT
 EXISTING: 29.20'
 ADDITION: 31.04'
 MAX ALLOWED: 35'

LOT AREA: 0.1087 ACRES (4,650 sq.ft.) PER SURVEY COMPLETED BY PVS, INC. DATED 11/19/2019, REVISED 11/21/2019.

MAXIMUM LOT COVERAGE: 35%
 EXISTING LOT COVERAGE: 59.2%
 PROPOSED LOT COVERAGE: 63.5%



VICINITY MAP
 SCALE: 1" = 1,000'±
 (WSSC GRID: 213 NW 04)
 MONTGOMERY COUNTY

LEGEND

- PROPOSED STORM DRAIN
- PROPOSED CONCRETE CURB & GUTTER
SEE DETAIL, SHEET C-3A
- PROPOSED DEPRESSED CURB & GUTTER
SEE DETAIL, SHEET C-3A
- PROPOSED SIDEWALK SEE LANDSCAPE PLANS FOR DETAILS
- PROPOSED SIDEWALK SEE LANDSCAPE PLANS FOR DETAILS
- 2" MILL & OVERLAY
- FULL DEPTH PATCH, SEE DETAIL, SHEET C-3A

SITE NOTES

1. ALL PAVEMENT STRIPING AND HANDICAP ACCESS RAMP SHOWN ON THESE PLANS SHALL BE CONSTRUCTED IN ACCORDANCE WITH THE MOST CURRENT APPLICABLE ADA CODES. SPECIFICATIONS AND DETAILS SHOWN ON THE CONTRACT DOCUMENTS.
2. SPOT ELEVATIONS ALONG A CURB LINE ARE TO THE FLOW LINE, UNLESS SPECIFICALLY NOTED OTHERWISE.
3. REFER TO ELECTRICAL PLAN FOR SITE LIGHTING AND LAYOUT. REFER TO ARCHITECTURAL DRAWINGS FOR BUILDING CONSTRUCTION. REFER TO LANDSCAPE PLANS FOR ON-SITE PAVING.
4. CURBS, GUTTERS, SIDEWALKS, AND PAVING SHALL BE INSTALLED IN SUCH A MANNER AS TO PROVIDE POSITIVE DRAINAGE FOR ALL AREAS SO THERE IS NO ACCUMULATION OF SURFACE WATER.
5. THE CONTRACTOR SHALL TEST PIT ALL PROPOSED UTILITY CROSSINGS AND PROPOSED UTILITIES WHICH LIE WITHIN FIVE (5) FEET OF EXISTING UTILITIES PRIOR TO TRENCHING OR ORDERING MATERIALS. IF A DISCREPANCY IS FOUND, IMMEDIATELY TEST PIT AND PROVIDE RESULTS TO THE ENGINEER OF RECORD.
6. COORDINATION BETWEEN THE SITE CONTRACTOR AND THE PLUMBING CONTRACTOR IS REQUIRED FOR UTILITY WORK AROUND THE PROPOSED BUILDING. DEMOLITION TO EXISTING UTILITIES IN THESE AREAS SHALL BE BY THE SITE CONTRACTOR. ALL PROPOSED WORK WITHIN THE LIMITS OF THE NEW BUILDING AREAS SHALL BE DONE BY THE PLUMBING CONTRACTOR. (SEE PLUMBING DWG'S).
7. BUILDING STAKEOUT SHALL UTILIZE ARCHITECTURAL PLAN.
8. THE CONTRACTOR IS RESPONSIBLE FOR COORDINATION OF AND ALL COSTS ASSOCIATED WITH ALL PROPOSED UTILITY CONNECTIONS (GAS, ELECTRIC, COMMUNICATIONS, ETC.). THE CONTRACTOR IS RESPONSIBLE FOR COORDINATION OF ALL UTILITY CROSSINGS TO MAINTAIN MINIMUM HORIZONTAL AND VERTICAL SEPARATION BETWEEN SITE CONTRACTOR INSTALLED UTILITIES AND AGENCY INSTALLED UTILITIES SUCH AS GAS, ELECTRIC, COMMUNICATIONS, ETC.
9. ALL GRADES SHOWN INDICATE FINAL CONDITIONS. SUBGRADE PREPARATION AND CONCRETE AND ASPHALT SHALL BE COORDINATED WITH ARCHITECT'S AND LANDSCAPE ARCHITECT'S PLANS AND DETAILS FOR LIMITS AND REQUIREMENTS WHERE PAVERS AND/OR STAMPED CONCRETE ARE TO BE PLACED.
10. SEE SHEET C-3A FOR ADDITIONAL SITE DETAILS.
11. PROVIDE SLEEVES IN CONCRETE/PAVING WHERE REQUIRED FOR PLACEMENT OF SIGNAGE. ALL EXISTING SIGNAGE SHOWN ON THE DEMOLITION PLAN TO BE REMOVED SHALL BE REPLACED WITH NEW SIGNAGE IN KIND MEETING MUTCD STANDARDS, AS WELL AS, THE MARYLAND ACCESSIBILITY CODE.
12. THIS PLAN HAS BEEN APPROVED FOR MANDATORY REFERRAL BY MNCPPC AT HEARING DATED 04/12/2018 AND MANDATORY REFERRAL NO. MR2018015.
13. THIS SITE HAS NO ON-SITE PARKING. ALL PARKING IS ON THE STREET OR PATRONS WALK TO THE SITE.

CAUTION: IF THIS DRAWING IS A REDUCTION,
 GRAPHIC SCALE MUST BE USED
 (ORIGINAL SIZE = 24" x 36")
GRAPHIC SCALE



(IN FEET)
 1 inch = 10 ft.

Prepared by:
 ADTEK Engineers, Inc.
 150 South East St., Suite 201
 Frederick, Maryland 21701

On Behalf Of:
 Montgomery County, Maryland
 Department of General Services
 101 Monroe Street, 11th Floor
 Rockville, Maryland 20850
 240-777-6113

MISS UTILITY
 CALL "MISS UTILITY AT 8-1-1 OR 1-800-257-7777 OR LOG ON TO www.call811.com OR www.missutility.com 48 HOURS IN ADVANCE OF ANY WORK IN THIS VICINITY. THE EXCAVATOR MUST NOTIFY ALL PUBLIC UTILITY COMPANIES WITH UNDERGROUND FACILITIES IN THE AREA OF PROPOSED EXCAVATION AND HAVE THOSE FACILITIES LOCATED BY THE UTILITY COMPANIES PRIOR TO COMMENCING EXCAVATION. BEFORE EXCAVATION THE CONTRACTOR IS RESPONSIBLE FOR CALLING TICKET CHECK AT 1-866-821-4226 TO VERIFY THAT ALL UTILITIES HAVE BEEN MARKED, 48 HOURS AFTER CALLING MISS UTILITY.



WIEDEMANN ARCHITECTS LLC
 5714 BRADLEY BLVD
 BETHESDA, MD 20814
 Voice 301-652-4022
 Fax 301-652-4094

www.wiedemannarchitects.com

PROJECT

NOYES CHILDRENS LIBRARY
 10237 CARROLL PLACE
 KENSINGTON, MD 20895

ISSUED

ISSUED FOR BID
 01 MAY 2024
 RFP# 1169193

DESIGN TEAM:

CONSULTING ARCHITECTS:
 GRIMM AND PARKER
 11720 BELTSVILLE SUITE 600
 CALVERTON, MD 20705
 301-595-1000

CIVIL ENGINEERS
 ADTEK ENGINEERS
 150 SOUTH EAST STREET SUITE 201
 FREDRICK, MD 21701
 301-662-4408

LANDSCAPE ARCHITECTS
 NORTON LAND DESIGN
 5146 DORSEY HALL DRIVE
 2ND FLOOR
 ELLICOTT CITY, MD 21042
 443-542-9199

MEP:
 GIPE ASSOCIATES
 1220 EAST JOPPA ROAD
 SUITE 223
 TOWSON, MD 21286
 410-832-2420

STRUCTURAL ENGINEER:
 COLUMBIA ENGINEERING, INC
 6210 OLD DOBBIN LANE
 COLUMBIA, MD 21045
 410-992-9970

REVISIONS	
DATE	DESCRIPTION
6/4/21	PERMIT ISSUE
7.2.24	ADDENDUM 2

SHEET

C-3

GRADING & UTILITY PLAN



WIEDEMANN ARCHITECTS LLC
 5714 BRADLEY BLVD
 BETHESDA, MD 20814
 Voice 301-652-4022
 Fax 301-652-4094

www.wiedemannarchitects.com

PROJECT
 NOYES CHILDREN'S LIBRARY
 10237 CARROLL PLACE
 KENSINGTON, MD 20895

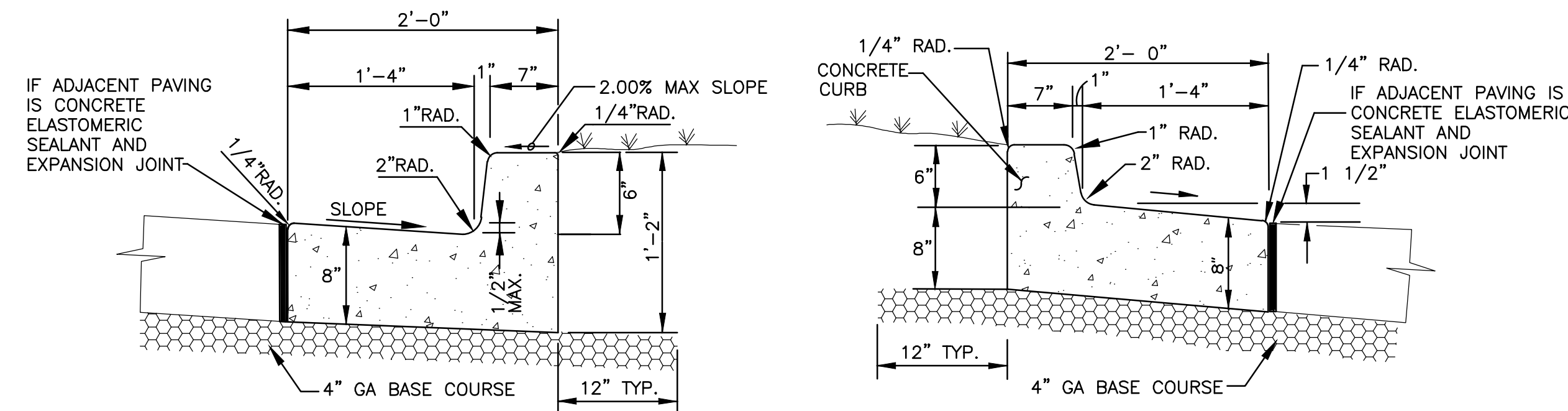
ISSUED
 ISSUED FOR BID
 01 MAY 2024
 RFP# 1169193

DESIGN TEAM:
 CONSULTING ARCHITECTS:
 GRIMA AND PARKER
 11720 BELTSVILLE
 SUITE 600
 CALVERTON, MD 20705
 301-595-1000
 CIVIL ENGINEERS
 ADTEK ENGINEERS
 150 SOUTH EAST STREET
 SUITE 201
 FREDRICK, MD 21701
 301-662-4408

LANDSCAPE ARCHITECTS
 NORTON LAND DESIGN
 5146 DORSEY HALL DRIVE
 2ND FLOOR
 ELLICOTT CITY, MD 21042
 443-542-9199

MEP-
 GIPE ASSOCIATES
 1220 EAST JOPPA ROAD
 SUITE 223
 TOWSON, MD 21286
 410-832-2420

STRUCTURAL ENGINEER:
 COLUMBIA ENGINEERING, INC.
 6210 OLD DOBBIN LANE
 COLUMBIA, MD 21045
 410-992-9970



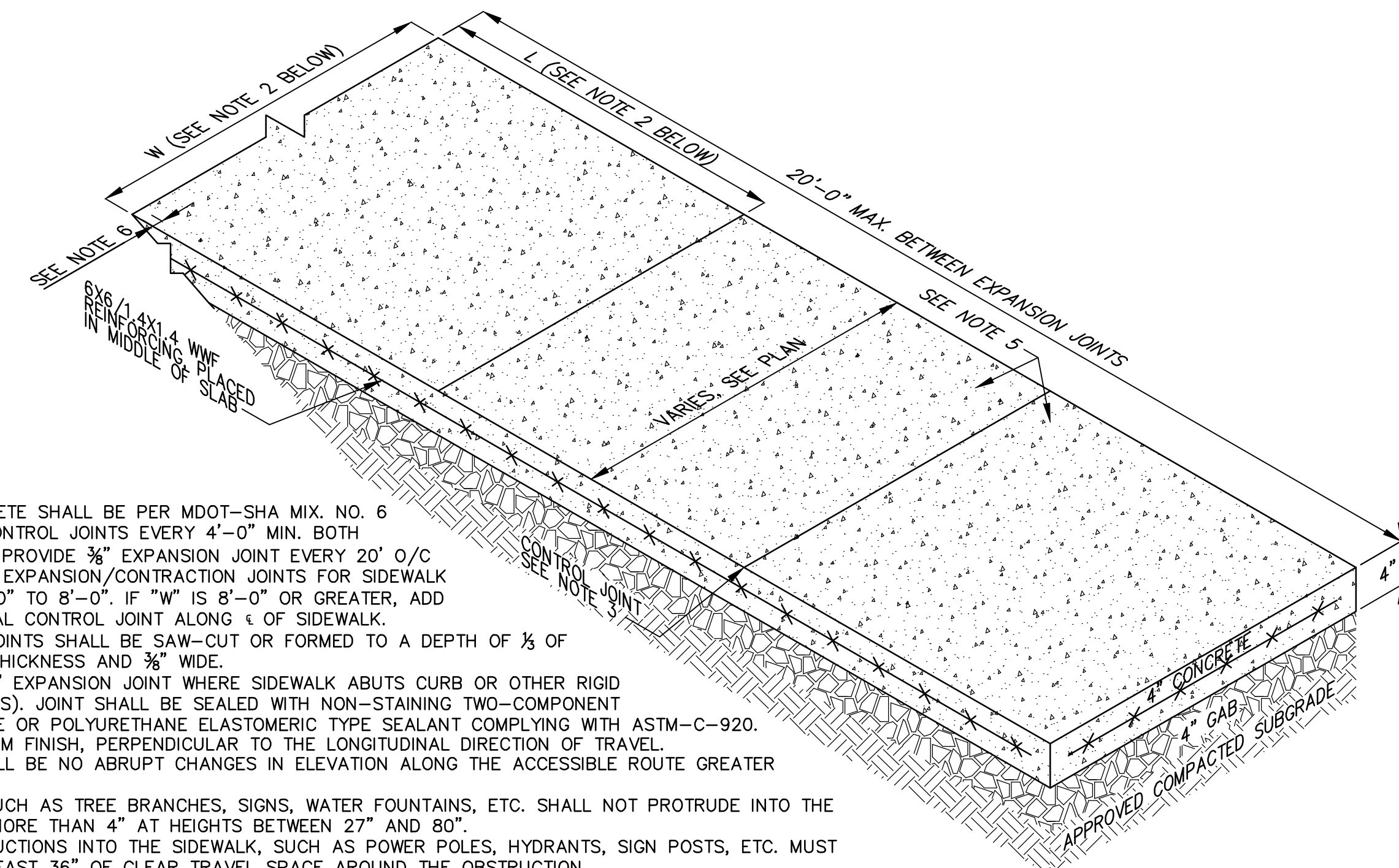
CURB/WITH NORMAL GUTTER

CURB/WITH SPILL GUTTER

GENERAL NOTES

- REFER TO MONTGOMERY COUNTY DEPARTMENT OF PUBLIC WORKS AND TRANSPORTATION SPECIFICATIONS FOR MATERIALS, METHODS OF CONSTRUCTION AND EXPANSION JOINT LOCATIONS PER MC DOT MC-100.01
- EXPANSION JOINT MATERIAL SHALL BE 1 1/2 INCH PREFORMED CORK, TRIMMED AND SEALED WITH NON-STAINING TWO-COMPONENT POLYSULFIDE OR POLYURETHANE ELASTOMERIC TYPE SEALANT COMPLYING WITH FS TT-5-00227, (NON-EXTRUDING).
- THE STANDARD DISTANCE BETWEEN JOINTS SHALL BE 10' (MAXIMUM AND MINIMUM DISTANCES SHALL BE 13' AND 5' RESPECTIVELY).

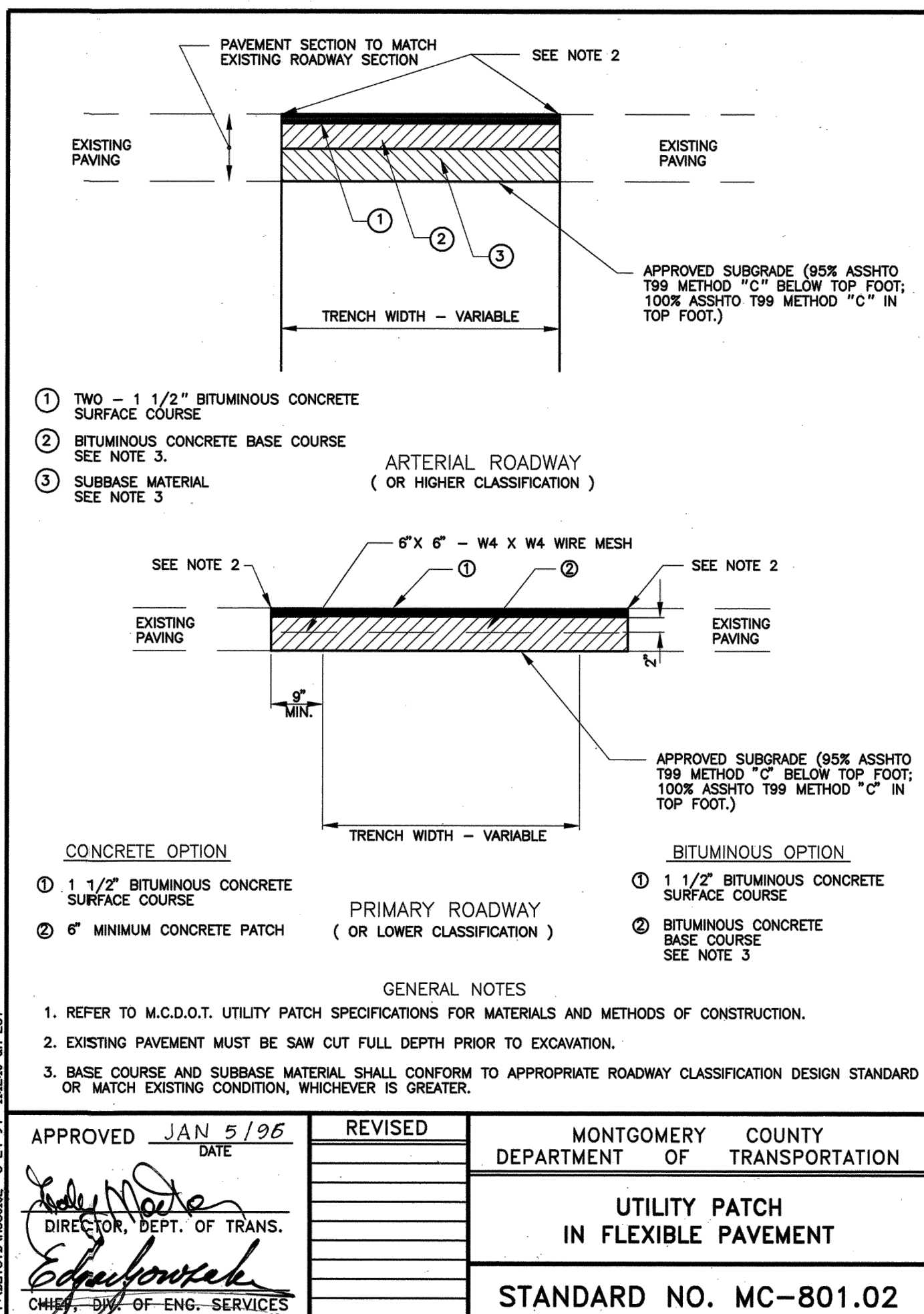
1 CONCRETE CURB & GUTTER
 C-3A NOT TO SCALE



NOTES:

- ALL CONCRETE SHALL BE PER MDOT-SHA MIX. NO. 6
- PROVIDE CONTROL JOINTS EVERY 4'-0" MIN. BOTH DIRECTIONS PROVIDE 3/8" EXPANSION JOINT EVERY 20' O/C MAX. MARK EXPANSION/CONTRACTION JOINTS FOR SIDEWALK WIDTHS 4'-0" TO 8'-0". IF "W" IS 8'-0" OR GREATER, ADD LONGITUDINAL CONTROL JOINT ALONG 1/2 OF SIDEWALK.
- CONTROL JOINTS SHALL BE SAW-CUT OR FORMED TO A DEPTH OF 1/2 OF THE SLAB THICKNESS AND 3/8" WIDE.
- PROVIDE 3/8" EXPANSION JOINT WHERE SIDEWALK ABUTS CURB OR OTHER RIGID STRUCTURE(S). JOINT SHALL BE SEALED WITH NON-STAINING TWO-COMPONENT POLYSULFIDE OR POLYURETHANE ELASTOMERIC TYPE SEALANT COMPLYING WITH ASTM-C-920.
- LIGHT BROOM FINISH, PERPENDICULAR TO THE LONGITUDINAL DIRECTION OF TRAVEL.
- THERE SHALL BE NO ABRUPT CHANGES IN ELEVATION ALONG THE ACCESSIBLE ROUTE GREATER THAN 1/4".
- OBJECTS SUCH AS TREE BRANCHES, SIGNS, WATER FOUNTAINS, ETC. SHALL NOT PROTRUDE INTO THE SIDEWALK MORE THAN 4" AT HEIGHTS BETWEEN 27" AND 80".
- ALL OBSTRUCTIONS INTO THE SIDEWALK, SUCH AS POWER POLES, HYDRANTS, SIGN POSTS, ETC. MUST HAVE AT LEAST 36" OF CLEAR TRAVEL SPACE AROUND THE OBSTRUCTION.
- ALL UTILITY COVERS IN SIDEWALK SHALL HAVE AN ANTI-SLIP FINISH AND MEET ADA REGULATIONS.
- THE MAXIMUM CROSS SLOPE ON THE SIDEWALK SHALL NOT EXCEED 2%.

2 ON-SITE CONCRETE SIDEWALK
 C-3A NOT TO SCALE



- ① TWO - 1 1/2" BITUMINOUS CONCRETE SURFACE COURSE
 ② BITUMINOUS CONCRETE BASE COURSE SEE NOTE 3.
 ③ SUBBASE MATERIAL SEE NOTE 3

- CONCRETE OPTION**
 ① 1 1/2" BITUMINOUS CONCRETE SURFACE COURSE
 ② 6" MINIMUM CONCRETE PATCH
- BITUMINOUS OPTION**
 ① 1 1/2" BITUMINOUS CONCRETE SURFACE COURSE
 ② BITUMINOUS CONCRETE BASE COURSE SEE NOTE 3

- GENERAL NOTES**
- REFER TO M.C.D.O.T. UTILITY PATCH SPECIFICATIONS FOR MATERIALS AND METHODS OF CONSTRUCTION.
 - EXISTING PAVEMENT MUST BE SAW CUT FULL DEPTH PRIOR TO EXCAVATION.
 - BASE COURSE AND SUBBASE MATERIAL SHALL CONFORM TO APPROPRIATE ROADWAY CLASSIFICATION DESIGN STANDARD OR MATCH EXISTING CONDITION, WHICHEVER IS GREATER.

APPROVED JAN 5 1996 DATE	REVISED	MONTGOMERY COUNTY DEPARTMENT OF TRANSPORTATION
 DIRECTOR, DEPT. OF TRANS.		UTILITY PATCH IN FLEXIBLE PAVEMENT STANDARD NO. MC-801.02
 CHIEF, DIV. OF ENG. SERVICES		

REVISIONS	
DATE	DESCRIPTION
6/4/21	PERMIT ISSUE
7.2.24	ADDENDUM 2

Prepared by:
 ADTEK Engineers, Inc.
 150 South East St., Suite 201
 Frederick, Maryland 21701

On Behalf Of:
 Montgomery County, Maryland
 Department of General Services
 101 Monroe Street, 11th Floor
 Rockville, Maryland 20850
 240-777-6113

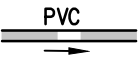
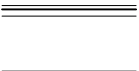




SHEET

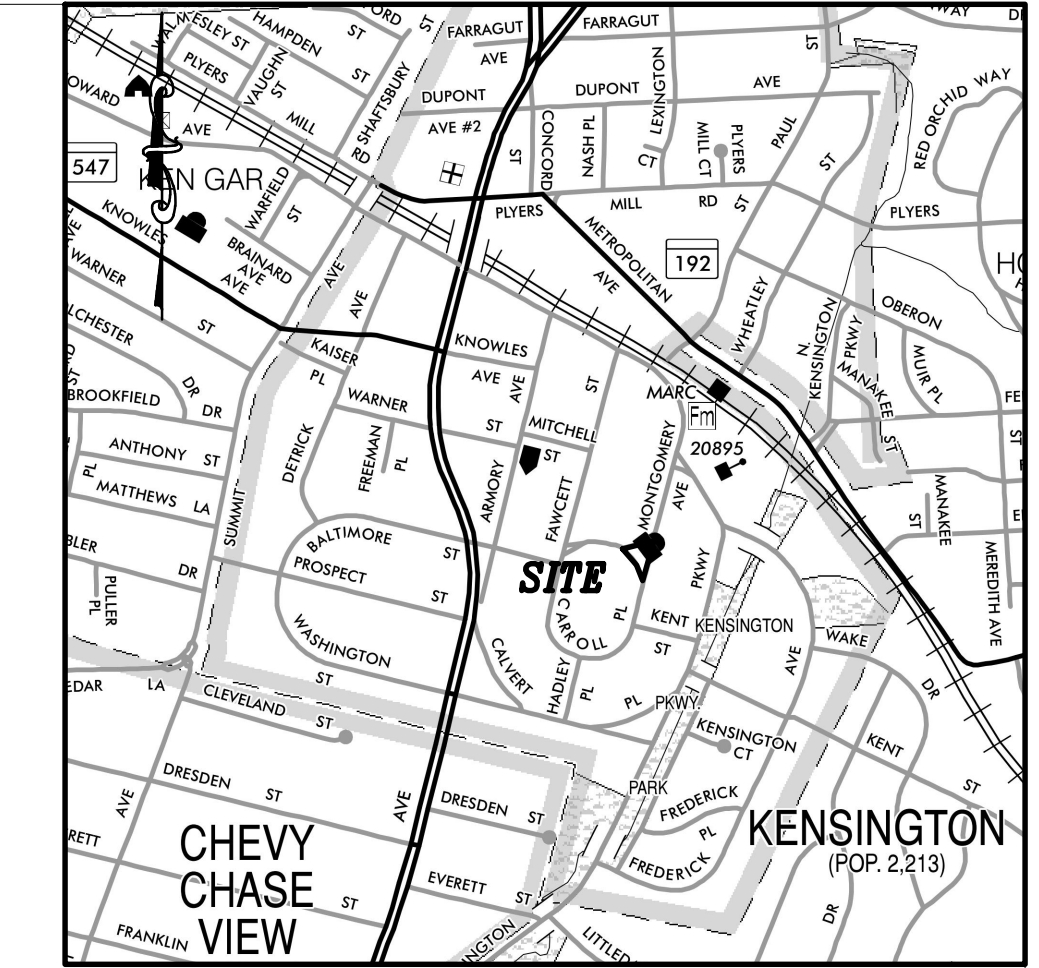
C-3A
 SITE DETAILS

NOTES

1. THE WORK SHOWN HEREON THIS SHEET IS CONSIDERED PHASE 1 AND SHALL BE COMPLETED PRIOR TO THE REMAINING SITE STORM DRAIN INSTALLATION. THE CONTRACTOR SHALL COORDINATE ANY TEES PROPOSED BY PHASE 2 SUCH THAT THEY ARE INSTALLED AND CAPPED TEMPORARILY PRIOR TO PHASE 2 STORM DRAIN WORK. WORK FOR PHASE 2 CAN OCCUR SIMULTANEOUSLY WITH PHASE 2, BUT THE PROPOSED STORM DRAIN SHOWN HEREON THIS SHEET SHALL BE INSTALLED PRIOR TO THE REMAINING PROPOSED STORM DRAIN SHOWN ON THE GRADING AND UTILITY PLAN SHEET C-3.
2. THE STORM DRAIN REALIGNMENT SHOWN HEREON THIS SHEET IS A MAINTENANCE PROJECT FOR THE TOWN OF KENSINGTON, THEREFORE ADDITIONAL PERMITTING WITH DPS IS NOT REQUIRED FOR WORK WITHIN THE RIGHT-OF-WAY.
3. TRAFFIC CONTROL FLAGGING OPERATIONS SHALL BE INSTALLED PER MCDOT STD. TOP-102.02. STEEL PLATES SHALL UTILIZED WITHIN THE RIGHT-OF-WAY FOR THE UTILITY WORK WHEN WORK IS NOT ONGOING.
4. ALL TRAFFIC WORK SHALL OCCUR DURING DAYTIME HOURS AND SHALL BE COORDINATED WITH THE TOWN OF KENSINGTON.
5. CONTRACTOR SHALL INSTALL NEW CURB & GUTTER SUCH THAT ANY NEW CURB RAMP ARE INSTALLED FOR THE CONCURRENT SITE WORK FOR THE LIBRARY.
6. COORDINATE DEMOLITION WITHIN THE LOD SHOWN HEREON WITH THE DEMOLITION WORK SHOWN ON THE EXISTING CONDITIONS AND DEMOLITION PLAN. NOTE THAT ADDITIONAL DEMOLITION IS REQUIRED AS PART OF THIS PHASE BEYOND THAT SHOWN ON SHEET C-1. ALL DEMOLITION REQUIRED FOR THE REMOVAL AND INSTALLATION OF THE EXISTING AND PROPOSED STORM DRAIN IS THE RESPONSIBILITY OF THE CONTRACTOR WITH NO ADDITIONAL COST TO THE OWNER. ALL WORK SHALL OCCUR WITHIN THE LOD, IF WORK BEYOND THE LOD IS PROPOSED, THE CONTRACTOR SHALL ACCEPT ALL CONSTRUCTION COSTS, DESIGN COSTS, AND PERMITTING FEES WITH NO ADDITIONAL COST TO THE OWNER.

LEGEND

- PROPOSED STORM DRAIN 
- PROPOSED CONCRETE CURB & GUTTER, SEE DETAIL SHEET C-3A 
- PROPOSED DEPRESSED CURB & GUTTER SEE DETAIL, SHEET C-3A 
- PROPOSED SIDEWALK SEE LANDSCAPE PLANS FOR DETAILS 
- PROPOSED SIDEWALK SEE LANDSCAPE PLANS FOR DETAILS 
- 2" MILL & OVERLAY 



VICINITY MAP
 SCALE: 1" = 1,000'±
 (WSSC GRID: 213 NW 04)
 MONTGOMERY COUNTY



WIEDEMANN ARCHITECTS LLC
 5714 BRADLEY BLVD
 BETHESDA, MD 20814
 Voice 301-652-4022
 Fax 301-652-4094
 www.wiedemannarchitects.com

PROJECT
 NOYES CHILDREN'S LIBRARY
 10237 CARROLL PLACE
 KENSINGTON, MD 20895

ISSUED
 ISSUED FOR BID
 01 MAY 2024
 RFP# 1169193

DESIGN TEAM:
 CONSULTING ARCHITECTS:
 GRIMA AND PARKER
 11720 BELTSVILLE
 SUITE 600
 CALVERTON, MD 20705
 301-595-1000

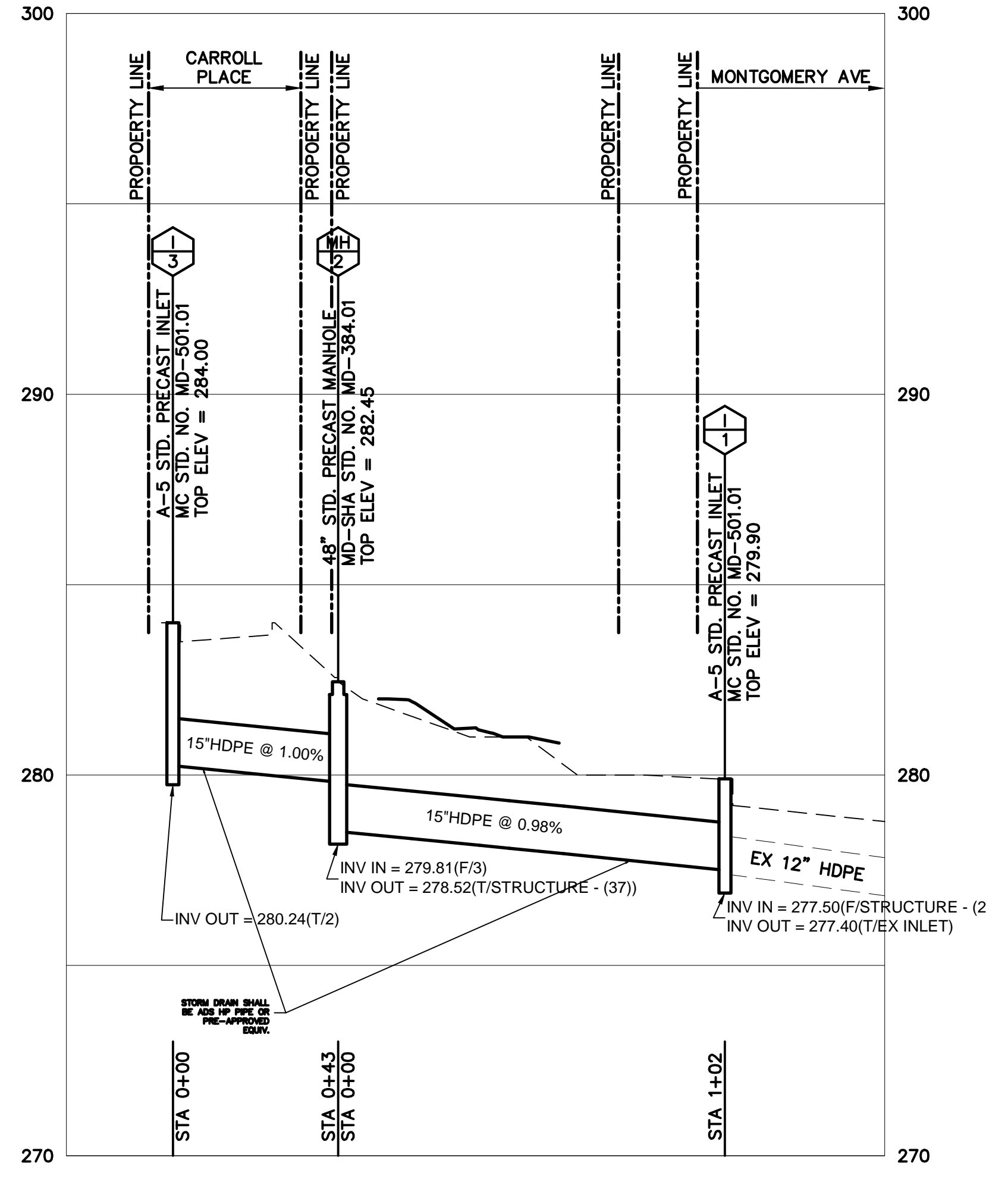
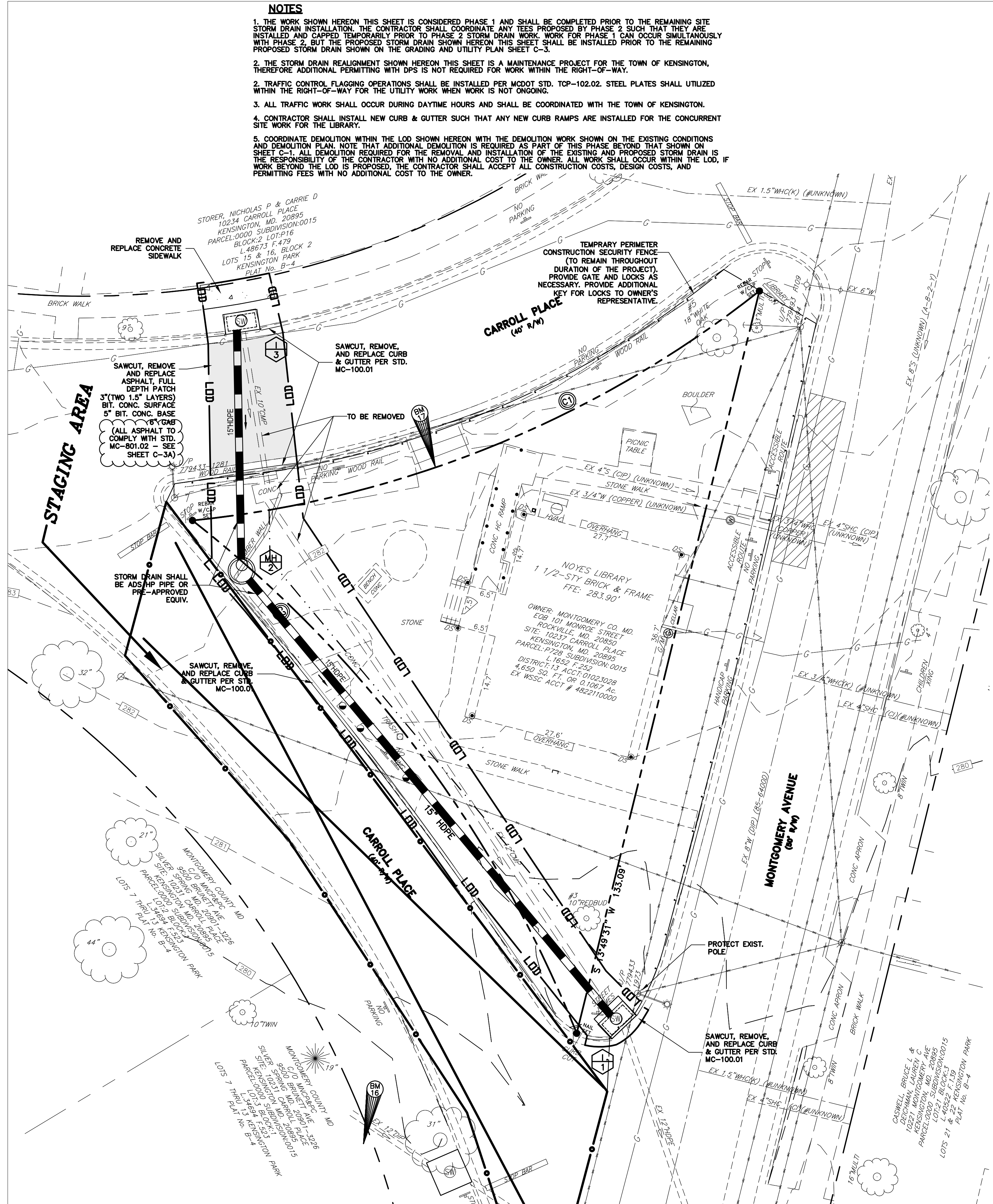
CIVIL ENGINEERS
 ADTEK ENGINEERS
 150 SOUTH EAST STREET
 SUITE 201
 FREDRICK, MD 21701
 301-662-4408

LANDSCAPE ARCHITECTS
 NORTON LAND DESIGN
 5146 DORSEY HALL DRIVE
 2ND FLOOR
 ELLICOTT CITY, MD 21042
 443-542-9199

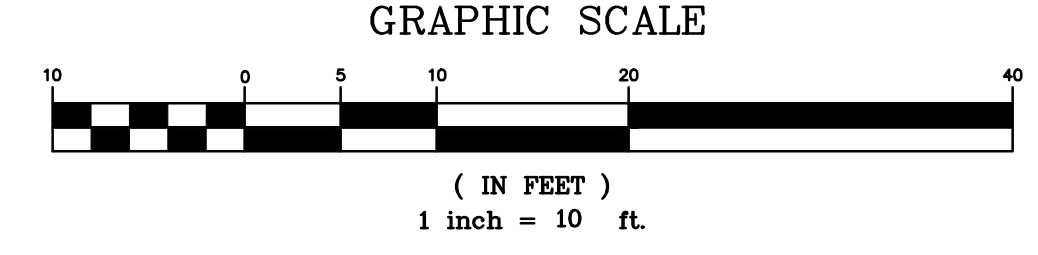
MEP:
 GIPE ASSOCIATES
 1220 EAST JOPPA ROAD
 SUITE 223
 TOWSON, MD 21286
 410-832-2420

STRUCTURAL ENGINEER:
 COLUMBIA ENGINEERING, INC
 6210 OLD DOBBIN LANE
 COLUMBIA, MD 21045
 410-992-9970

REVISIONS	
DATE	DESCRIPTION
6/4/21	PERMIT ISSUE
7.2.24	ADDENDUM 2



CAUTION: IF THIS DRAWING IS A REDUCTION,
 GRAPHIC SCALE MUST BE USED
 (ORIGINAL SIZE = 24" x 36")



MISS UTILITY
 CALL "MISS UTILITY AT 8-1-1 OR 1-800-257-7777 OR LOG ON TO
 www.call811.com or www.missutility.com 48 HOURS IN ADVANCE OF ANY
 WORK IN THIS VICINITY. THE EXCAVATOR MUST NOTIFY ALL PUBLIC
 UTILITY COMPANIES WITH UNDERGROUND FACILITIES IN THE AREA OF
 PROPOSED EXCAVATION AND HAVE THOSE FACILITIES LOCATED BY THE
 UTILITY COMPANIES PRIOR TO COMMENCING EXCAVATION. BEFORE
 EXCAVATION THE CONTRACTOR IS RESPONSIBLE FOR CALLING TICKET
 CHECK AT 1-866-821-4226 TO VERIFY THAT ALL UTILITIES HAVE BEEN
 MARKED, 48 HOURS AFTER CALLING MISS UTILITY.

Prepared by:
 ADTEK Engineers, Inc.
 150 South East St., Suite 201
 Frederick, Maryland 21701

On Behalf Of:
 Montgomery County, Maryland
 Department of General Services
 101 Monroe Street, 11th Floor
 Rockville, Maryland 20850
 240-777-6113

SHEET

C-3B

RIGHT-OF-WAY UTILITY
 PHASE 1

RFP 1169193
 Construction Services for Noyes Library for Young Children - Rehabilitation and Renovation
 Solicitation Amendment 2
 Revised L-1.1

SITE LANDSCAPE GENERAL NOTES:

1. SEE CIVIL PLANS FOR GRADING AND SPOT ELEVATIONS.
2. EXISTING BOULDER/TIME CAPSULE TO REMAIN.
3. EXISTING TREES SHOWN ARE TO BE PROTECTED.
4. PROVIDE SMOOTH TRANSITIONS BETWEEN DIFFERING SURFACE MATERIALS.
5. SEE ARCHITECTURAL PLANS FOR STAIR DETAILS AT POINTS OF ENTRY.



WIEDEMANN ARCHITECTS LLC
 5714 BRADLEY BLVD
 BETHESDA, MD 20814
 Voice 301-652-4022
 Fax 301-652-4094

www.wiedemannarchitects.com

PROJECT
 NOYES LIBRARY FOR YOUNG CHILDREN'S REHABILITATION AND RENOVATION
 10237 CARROLL PLACE
 KENSINGTON, MD 20895
 RFP #1169193
 ISSUED

BID SET
 01 MAY 2024

CONSULTANTS

ARCHITECTS:
 GRIMM AND PARKER
 11720 BELTSVILLE
 SUITE 600
 CALVERTON, MD 20705
 301-595-1000

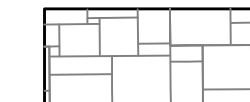
CIVIL ENGINEERS
 ADTEK ENGINEERS
 150 SOUTH EAST STREET
 SUITE 201
 FREDRICK, MD 21701
 301-662-4408

LANDSCAPE ARCHITECTS
 NORTON LAND DESIGN
 5146 DORSEY HALL DRIVE
 2ND FLOOR
 ELLICOTT CITY, MD 21042
 443-542-9199

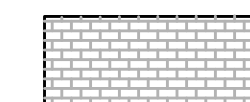
MEP-
 GIPE ASSOCIATES
 1220 EAST JOPPA ROAD
 SUITE 223
 TOWSON, MD 21286
 410-832-2420

STRUCTURAL ENGINEER:
 COLUMBIA ENGINEERING, INC
 6210 OLD DOBBIN LANE
 COLUMBIA, MD 21045
 410-992-9970

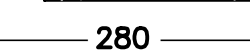
LEGEND



BLUESTONE PAVERS



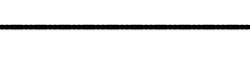
BRICK PAVERS



PROPOSED CONTOUR



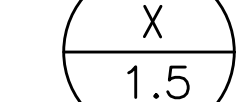
EXISTING CONTOUR



PROPERTY BOUNDARY



LIMIT OF DISTURBANCE



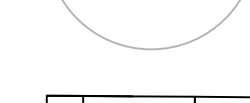
MATERIAL CALLOUT



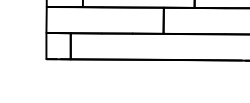
EXISTING TREE



BLUESTONE STAIR



SOLDIER COURSE EDGE



BIKE RACK

MISS UTILITY

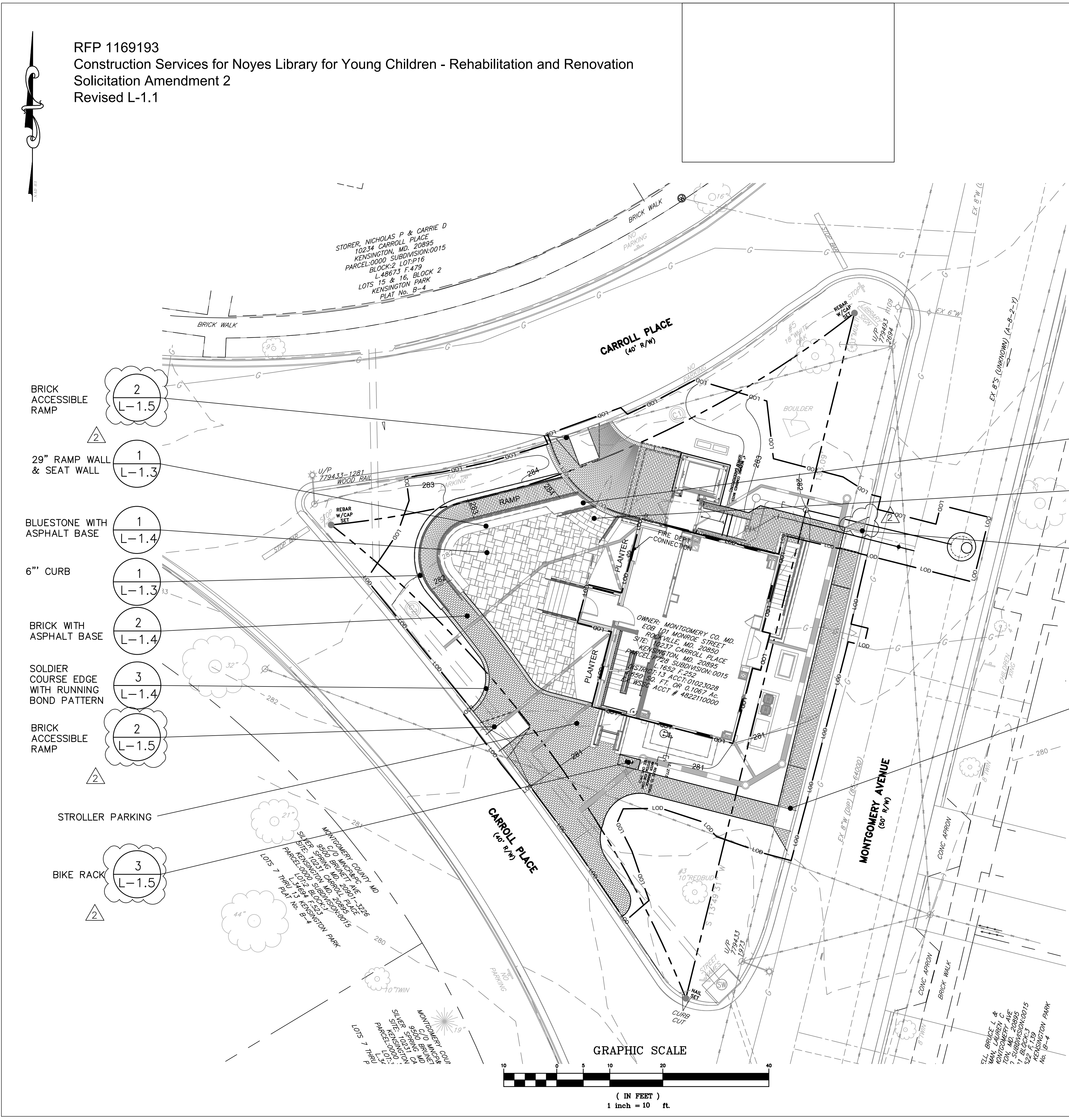
CALL "MISS UTILITY AT 1-800-257-7777, 48 HOURS PRIOR TO THE START OF WORK. THE EXCAVATOR MUST NOTIFY ALL PUBLIC UTILITY COMPANIES WITH UNDERGROUND FACILITIES IN THE AREA OF PROPOSED EXCAVATION AND HAVE THOSE FACILITIES LOCATED BY THE UTILITY COMPANIES PRIOR TO COMMENCING EXCAVATION. BEFORE EXCAVATION THE CONTRACTOR IS RESPONSIBLE FOR CALLING TICKET CHECK AT 1-866-821-4226 TO VERIFY THAT ALL UTILITIES HAVE BEEN MARKED, 48 HOURS AFTER CALLING MISS UTILITY. THE EXCAVATOR IS RESPONSIBLE FOR COMPLIANCE WITH REQUIREMENTS OF CHAPTER 36A OF THE MONTGOMERY COUNTY CODE.

REVISIONS	
DATE	DESCRIPTION
9.3.2020	REVISION 1
7.2.2024	ADDENDUM 2

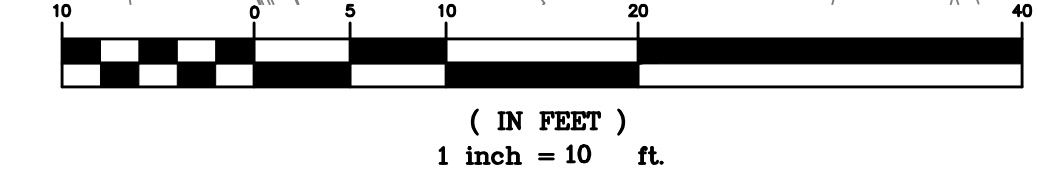
NORTON LAND DESIGN
 LANDSCAPE ARCHITECTURE + ENVIRONMENTAL PLANNING
 5146 DORSEY HALL DRIVE, 2ND FLOOR
 ELLICOTT CITY, MD 21042
 P.443.542.9119
 WWW.NORTONLANDDESIGN.COM

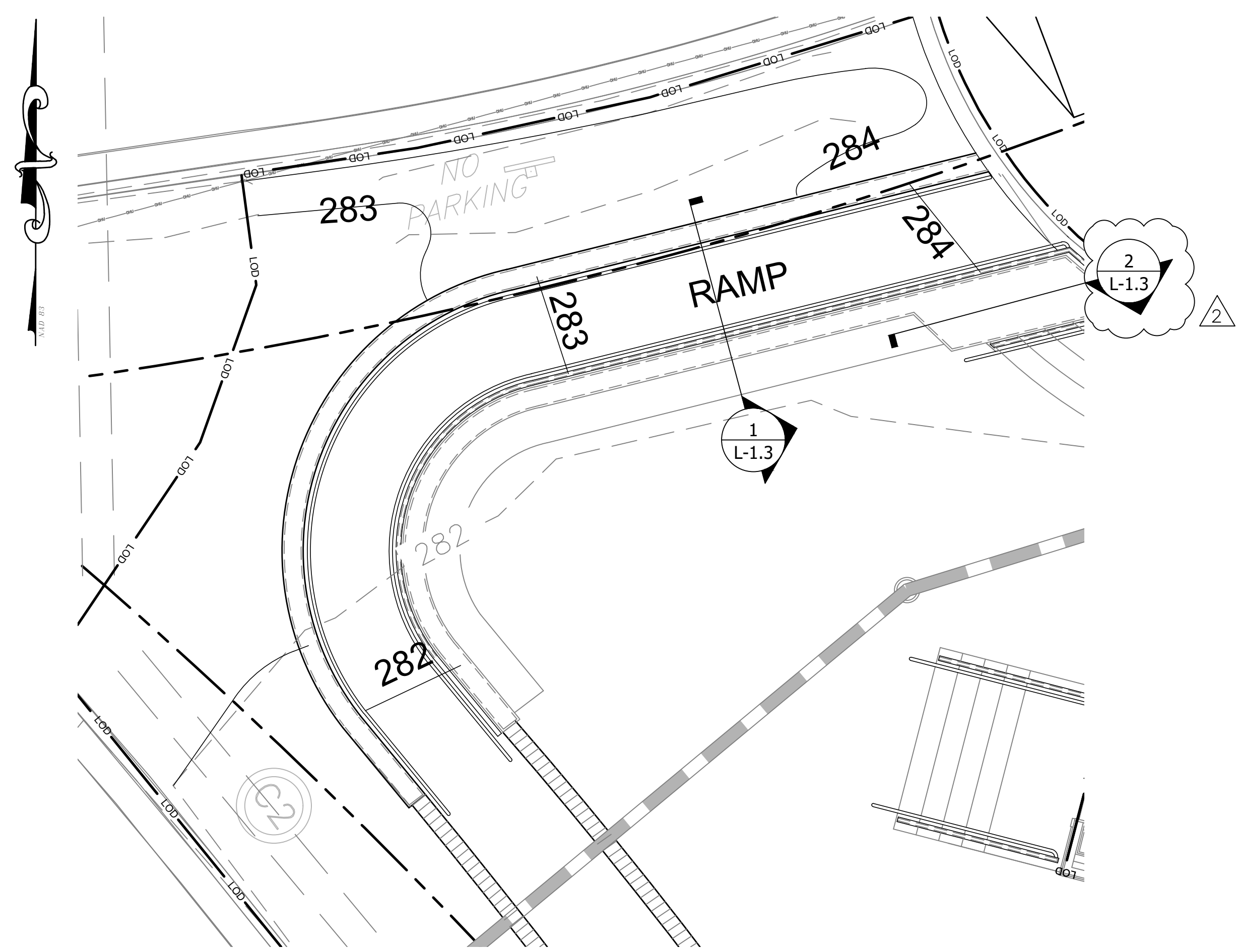
SHEET

**L-1.1
 HARDSCAPE
 SITE
 PLAN**



GRAPHIC SCALE





SCALE: 1/4"=1' 0"

RFP 1169193
 Construction Services for Noyes Library for Young Children - Rehabilitation and Renovation
 Solicitation Amendment 2
 Revised L-1.3



WIEDEMANN ARCHITECTS LLC
 5714 BRADLEY BLVD
 BETHESDA, MD 20814
 Voice 301-652-4022
 Fax 301-652-4094

www.wiedemannarchitects.com
 PROJECT
 NOYES LIBRARY FOR YOUNG CHILDREN'S REHABILITATION AND RENOVATION
 10237 CARROLL PLACE
 KENSINGTON, MD 20895
 RFP #1169193
 ISSUED

BID SET
 01 MAY 2024

CONSULTANTS

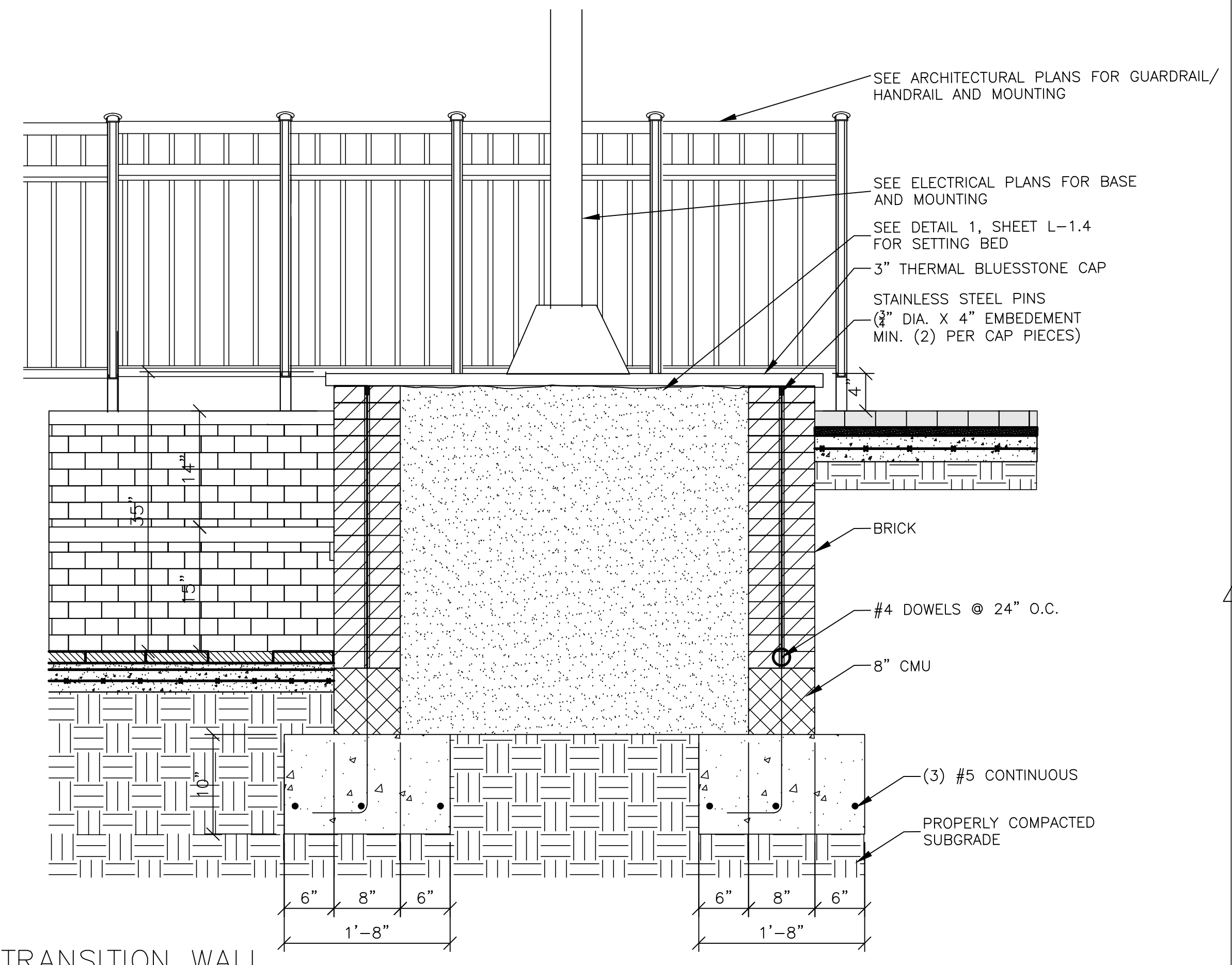
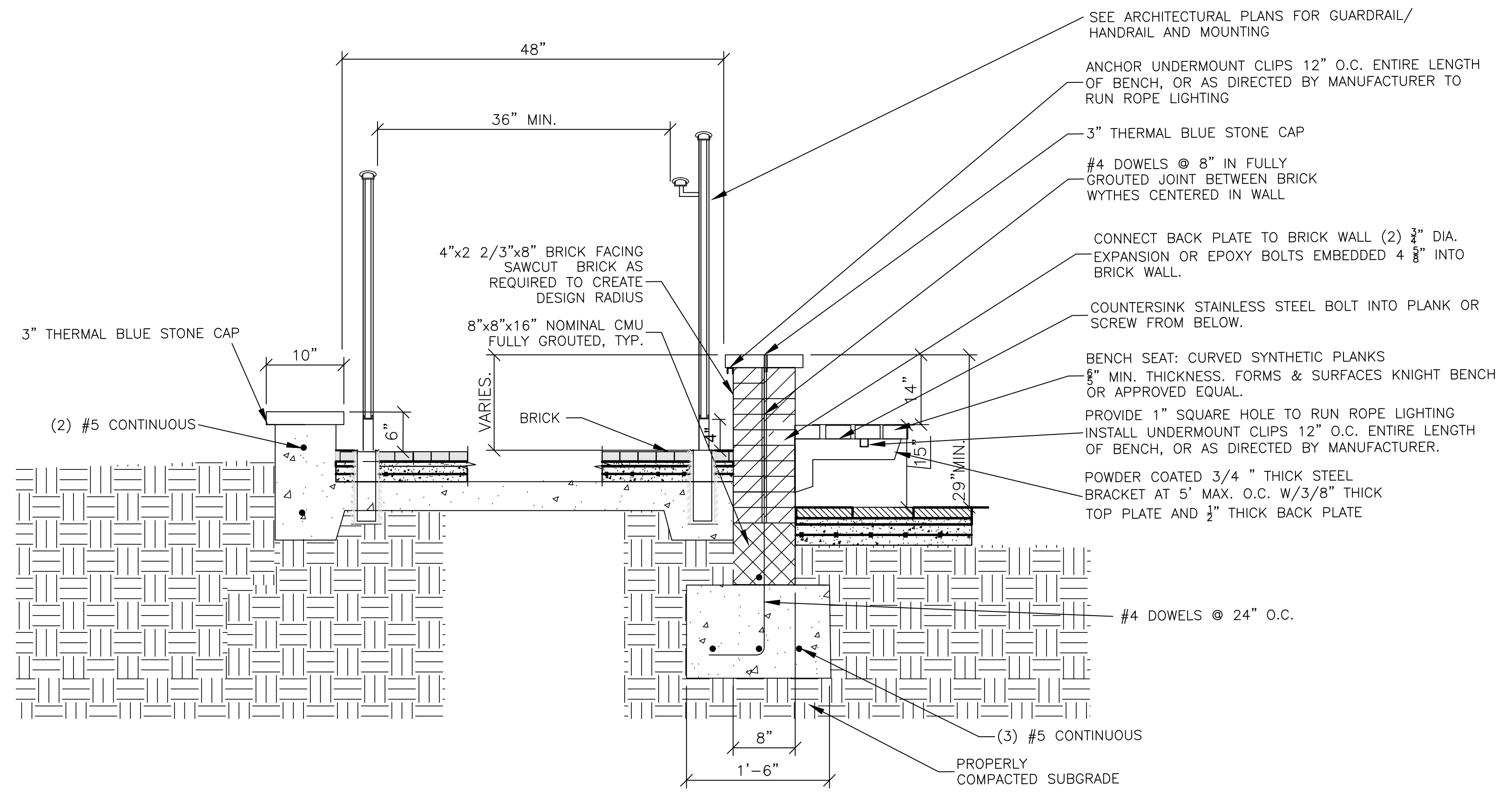
ARCHITECTS:
 GRIMM AND PARKER
 11720 BELTSVILLE
 SUITE 600
 CALVERTON, MD 20705
 301-595-1000

CIVIL ENGINEERS
 ADTEK ENGINEERS
 150 SOUTH EAST STREET
 SUITE 201
 FREDRICK, MD 21701
 301-662-4408

LANDSCAPE ARCHITECTS
 NORTON LAND DESIGN
 5146 DORSEY HALL DRIVE
 2ND FLOOR
 ELLICOTT CITY, MD 21042
 443-542-9199

MEP:
 GIPE ASSOCIATES
 1220 EAST JOPPA ROAD
 SUITE 223
 TOWSON, MD 21286
 410-832-2420

STRUCTURAL ENGINEER:
 COLUMBIA ENGINEERING, INC
 6210 OLD DOBBIN LANE
 COLUMBIA, MD 21045
 410-992-9970



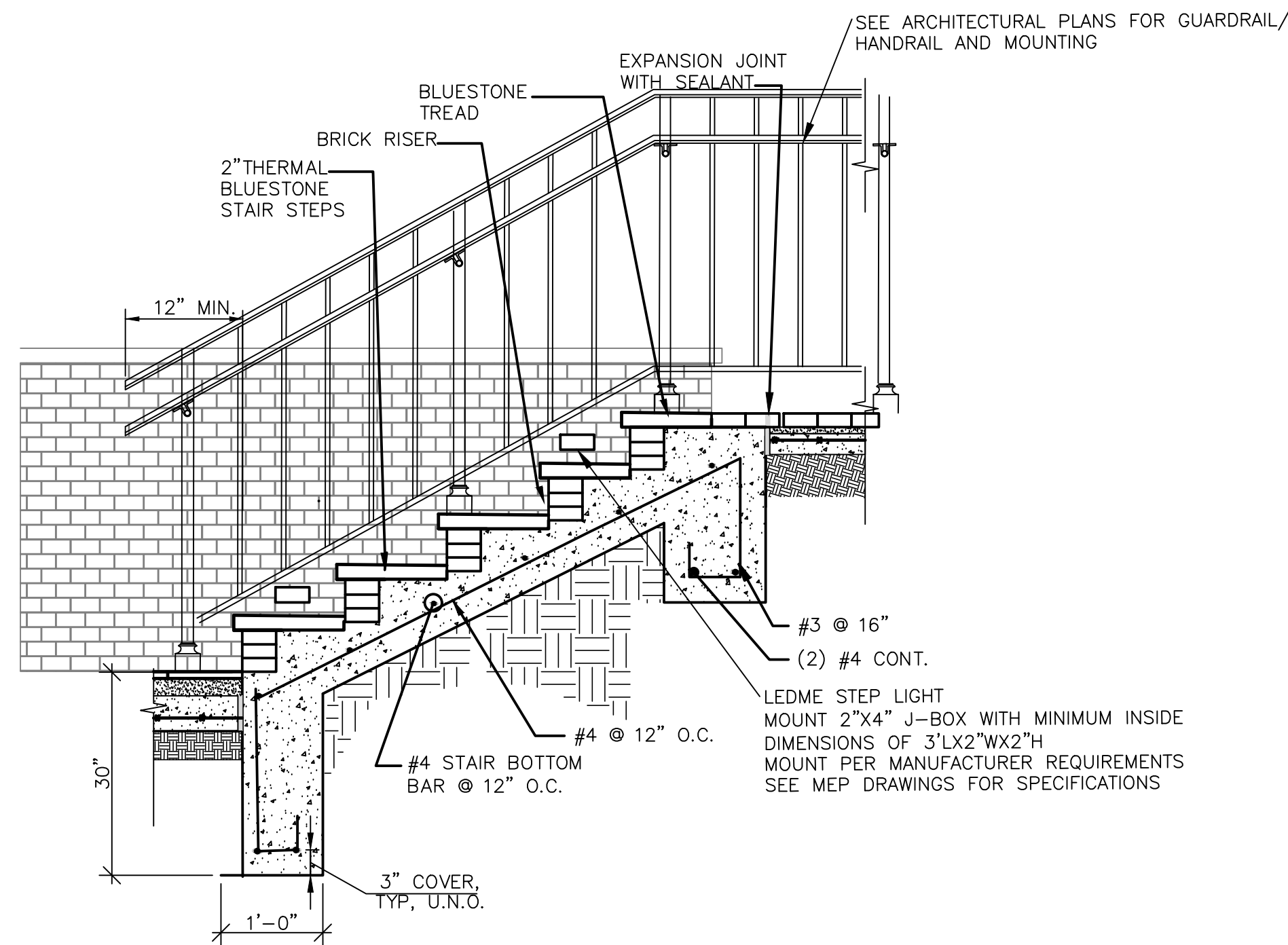
REVISIONS	
DATE	DESCRIPTION
9.3.2020	REVISION 1
7.2.2024	ADDENDUM 2

SHEET

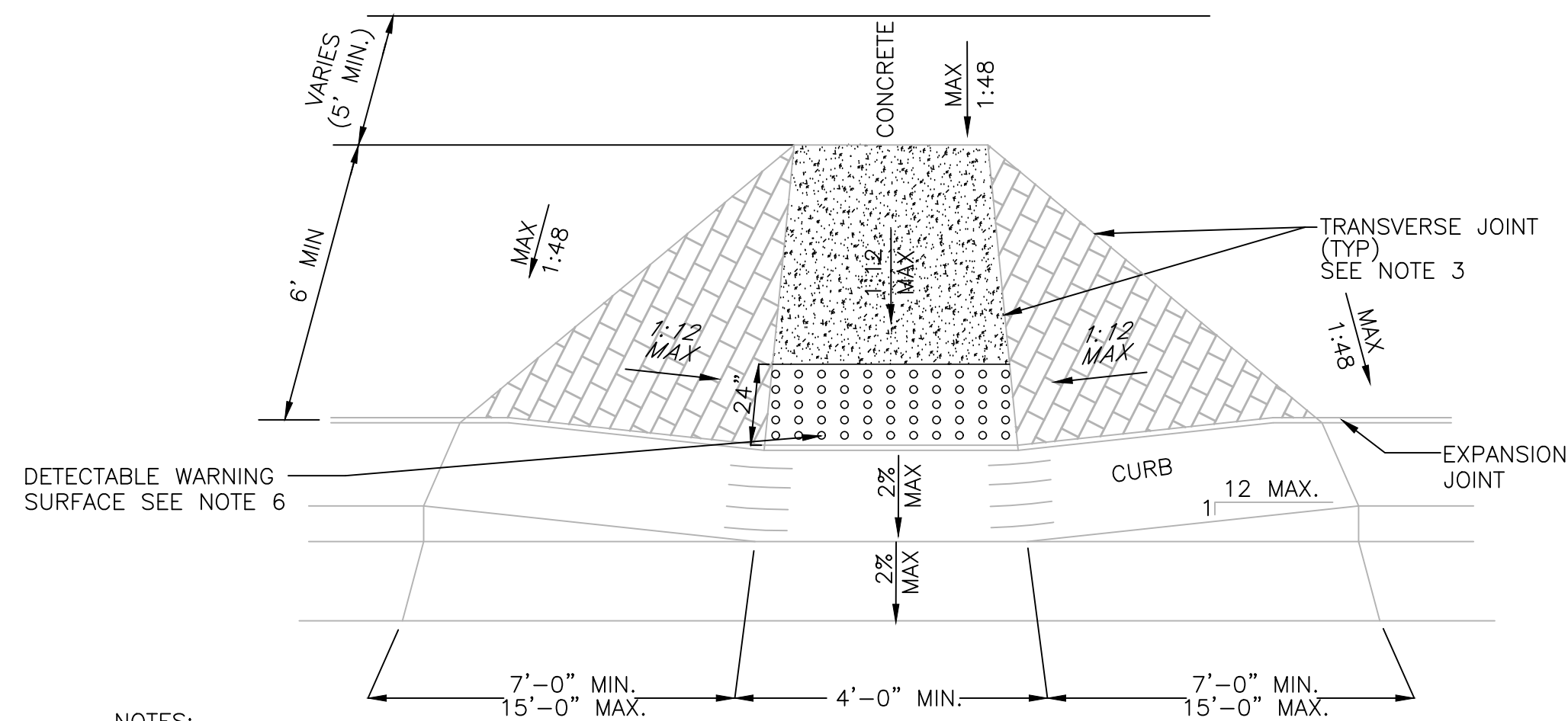
L-1.3
 WALL
 DETAILS
 PLAN

NORTON LAND DESIGN
 LANDSCAPE ARCHITECTURE + ENVIRONMENTAL PLANNING
 5146 DORSEY HALL DRIVE, 2ND FLOOR ELLICOTT CITY, MD 21042
 BALT. 443.542.9199 x101 DC 240.342.2329x101 WWW.NORTONLANDDESIGN.COM

RFP 1169193
 Construction Services for Noyes Library for Young Children - Rehabilitation and Renovation
 Solicitation Amendment 2
 Revised L-1.5



1 BLUESTONE STAIR ON GRADE DETAIL
 NOT TO SCALE



- NOTES:
1. SHALL BE IN CONFORMANCE WITH RAMP DETAIL MC STD 112.01 & MC STD 113.02
 2. REFER TO THE MARYLAND STATE HIGHWAY ADMINISTRATION SPECIFICATIONS FOR MATERIALS AND METHODS OF CONSTRUCTION.
 3. EXPANSION JOINT MATERIAL SHALL BE 1/2 INCH PREFORMED CORK, TRIMMED, AND SEALED WITH NON-STAINING, TWO-COMPONENT POLYSULFIDE OR POLYURETHANE ELASTOMERIC TYPE SEALANT COMPLYING WITH FS TT-S-00227.
 4. TRUCATED DOME PAVER MUST COMPLY WITH MDOT-SHA STD. NO. MD-655.40 DETECTABLE WARNING SURFACES.
 5. THERE SHALL BE A MAX. ELEVATION DIFFERENCE OF 1/4" BETWEEN SURFACES PER ADA.
 6. DETECTABLE SURFACE SHALL BE "PRE-CAST CONCRETE COLOR TO BE CHOSEN BY LANDSCAPE ARCHITECT."
 7. DETAIL MAY VARY PER PLAN. MAXIMUM SLOPES FOR ADA NOT TO EXCEED A MAX CROSS SLOPE OF 2% AND MAX RAMP SLOPE OF 12:1. SEE CIVIL PLANS FOR ELEVATIONS AND SLOPES.
 8. CONTRACTOR TO VERIFY ADA COMPLIANCE PRIOR TO INSTALLATION OF RAMP.

2 ACCESSIBLE RAMP
 NOT TO SCALE

3 BIKE RACK
 NOT TO SCALE



WIEDEMANN ARCHITECTS LLC
 5714 BRADLEY BLVD
 BETHESDA, MD 20814
 Voice 301-652-4022
 Fax 301-652-4094

www.wiedemannarchitects.com

PROJECT
 NOYES LIBRARY FOR YOUNG
 CHILDREN'S REHABILITATION AND
 RENOVATION
 10237 CARROLL PLACE
 KENSINGTON, MD 20895
 RFP #1169193
 ISSUED

BID SET
 01 MAY 2024

CONSULTANTS

ARCHITECTS:
 GRIMM AND PARKER
 11720 BELTSVILLE
 SUITE 600
 CALVERTON, MD 20705
 301-595-1000

CIVIL ENGINEERS
 ADTEK ENGINEERS
 NORTON LAND DESIGN
 150 SOUTH EAST STREET
 SUITE 201
 FREDRICK, MD 21701
 301-662-4408

LANDSCAPE ARCHITECTS
 NORTON LAND DESIGN
 5146 DORSEY HALL DRIVE
 2ND FLOOR
 ELLICOTT CITY, MD 21042
 443-542-9199

MEP-
 GIPE ASSOCIATES
 1220 EAST JOPPA ROAD
 SUITE 223
 TOWSON, MD 21286
 410-832-2420

STRUCTURAL ENGINEER:
 COLUMBIA ENGINEERING, INC
 6210 OLD DOBBIN LANE
 COLUMBIA, MD 21045
 410-992-9970

REVISIONS	
DATE	DESCRIPTION
9.3.2020	REVISION 1
7.2.2024	ADDENDUM 2

SHEET

L-1.5
 HARDSCAPE
 SITE
 DETAILS

NORTON LAND DESIGN
 LANDSCAPE ARCHITECTURE + ENVIRONMENTAL PLANNING
 5146 DORSEY HALL DRIVE, 2ND FLOOR
 BALT. 443.542.9199 x101 DC 240.342.2329x101
 WWW.NORTONLANDDESIGN.COM

SECTION 12 93 23
TRASH AND RECYCLING RECEPTACLES

Part 1 General

- 1.01 Summary
 - A. Section Includes:
 - 1. 45-gallon, split-stream, cast aluminum litter/recycling receptacles with two 20-gallon liners.
- 1.02 Submittals
 - A. Provide submittals in accordance with Section 01 33 00 – Submittal Procedures.
 - B. Product data:
 - 1. Manufacturer’s standard product literature.
 - 2. Shop drawings.
 - 3. Installation instructions.
 - 4. Maintenance instructions.
 - C. Submit powdercoat finish samples for approval.
- 1.03 Quality Assurance
 - A. Manufacturer Qualifications:
 - 1. Minimum 15 years experience in the manufacture of litter and recycling receptacles for public spaces.
 - 2. Provide reference list of at least ten major transportation authorities, municipalities, universities, or other high-use public environments currently using litter and recycling receptacles fabricated by the manufacturer.
- 1.04 Delivery, Storage and Handling
 - A. Handle products in accordance with manufacturer’s instructions.
 - B. Store products in manufacturer’s original packaging until ready for installation.
 - C. Protect products from impacts and abrasion during storage.
- 1.05 Warranty
 - A. Provide manufacturer’s standard warranty:
 - 1. Warranty terms: one year from date of invoice against defects in materials and workmanship.

Part 2 Products

- 1. Manufacturer
 - A. Basis-of-design product: provide cast aluminum litter and recycling receptacles based on the product named:
 - 1. Dispatch Litter and Recycling Receptacle by Forms+Surfaces.
 - 2. Manufacturer Contact:
Forms+Surfaces
30 Pine Street
Pittsburgh, PA 15223
phone: 800-451-0410
fax: 412-781-7840
email: sales@forms-surfaces.com
website: www.forms-surfaces.com

- B. Overall Dimensions:
1. 45-gallon receptacles: 45.3" high x 26.8" wide x 22.9" deep.
- C. Configuration Option:
1. 45-gallon, split-stream litter/recycling receptacle with two 20-gallon liners: provide lid with an internal baffle plate to divide inserted waste materials into two streams.
- D. Recycle Openings:
1. Bottle & Can recycle openings: 4.5" diameter round hole.
- E. Materials:
1. Receptacle frame and body: cast aluminum.
 2. Lid: cast aluminum.
 3. Lid baffle (split-stream units only): aluminum plate.
 4. Hinge pins: stainless steel.
 5. Cam latch: stainless steel (provide lift lever as specified).
 6. Liners: black polyethylene, UL94HB fire rating.
 7. Attic Stock: provide 4 extra black polyethylene liners to Owner at substantial completion.
- F. Finishes:
1. Lid: polyester powdercoat
 - a. Standard Texture from Forms+Surfaces Powdercoat Chart.
 2. Body: polyester powdercoat
 - a. Standard Texture from Forms+Surfaces Powdercoat Chart.
- G. Graphics:
1. Provide two separate mechanically fastened aluminum sign plates to display litter and/or recycling graphics (graphics to be selected by Owner).
 2. Sign plate finish: stainless steel with Satin finish.
 3. Graphics: black applied vinyl logos or other as specified (graphics to be selected by Owner).
- H. Installation Options:
1. Freestanding.
- I. Number and Location:
1. (2 each) trash and recycling receptacles, as determined in field by Landscape Architect.

2

Part 1 - Execution

- 3.01 Examination
- A. Verify that substrates are stable and capable of supporting the weight of items covered under this section.
 - B. Verify that substrates have been adequately prepared to securely anchor those items that will be surface mounted.
- 3.02 Installation
- A. Install according to the manufacturer's installation instructions.
 - B. Install in conformance to applicable ADA guidelines and End User's established Accessibility policies.

END OF SECTION