

# PERFORMANCE

● POWER and ● PERFORMANCE

NEW

## RT105: ULTRA-COMPACT TRACK LOADER

The new ultra-compact RT105 is built for efficiency. Super high power drive chains feature heavy, high-strength construction, designed for the most rugged conditions and tight spaces.

### ● LOWEST CLEARANCE HEIGHT

Industry leading overhead clearance of 71.5" ground to the top of the ROPS.



### ● IDEALTRAX™

#### INDUSTRY EXCLUSIVE

#### AUTOMATIC TRACK TENSIONING SYSTEM

Eliminate daily tension checks and costly track replacements with the IdealTrax™ system. Tracks are automatically tensioned when the engine is started and during operation. Tension is released when the engine is shut off.

### ● RATED OPERATING CAPACITY

RT105 1,050 lbs. (476 kg)

● **HIGH BREAKOUT FORCES**

TILT 2,975 lbs. (1346 kg)

LIFT 3,042 lbs. (1376 kg)

● **TIER IV ENGINE**

POWER 31.8 hp (23.7 kW)

TORQUE 80.7 ft.-lbs. (109.4 Nm)

● **GROUND CLEARANCE**

RT105 7.5" (191 mm)

● **ULTRA-COMPACT**

The RT105 has a width of 50.8" (1290 mm) when the bucket is detached. Industry leading overall machine clearance height of 71.5" (1816 mm) ground to the top of the ROPS.



● **LIFT HEIGHT**

RT105 109" (2769 mm)



● **ADAPTED SKID LOADER CHASSIS**

Custom built from the proven design of the R105 skid loader to aid in superior weight distribution. This design enhances stability, grading, tractive effort, and ride control.

# PERFORMANCE

● POWER and ● PERFORMANCE

## RT165: THE IDEAL TRACK LOADER

From the barn to the jobsite, this mid-sized track loader offers compact power to impress any operator. Designed, assembled and tested in the USA to ensure limited downtime and maximum efficiency.

### ● HIGH BREAKOUT FORCES

TILT	4,230 lbs. (1919 kg)
LIFT	5,060 lbs. (2295 kg)

### ● IDEALTRAX™

#### INDUSTRY EXCLUSIVE AUTOMATIC TRACK TENSIONING SYSTEM

Eliminate daily tension checks and costly track replacements with the IdealTrax™ system. Tracks are automatically tensioned when the engine is started and during operation. Tension is released when the engine is shut off.

### ● CHOICE OF CONTROLS

Choose between pilot joystick, T-bar, or hand/foot controls to suit operator preference. A conversion kit is available for the pilot dual-hand control system.



### ● RATED OPERATING CAPACITY

RT165	1,650 lbs. (748 kg)
-------	---------------------

### ● TIER IV ENGINE

POWER	69.3 hp (52 kW)
TORQUE	178 ft.-lbs. (241 Nm)



● **ADAPTED SKID LOADER CHASSIS**

Custom built from the proven design of the R165 skid loader to aid in superior weight distribution. This design enhances stability, grading, tractive effort, and ride control.

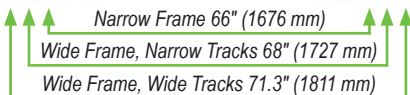


● **COUNTERWEIGHT/BUMPER**

Gain extra tipping capacity while offering increased rear protection. Increases rated operating capacity on RT165 by 100 lbs. (46 kg) and adds 1.5" (38 mm) to overall length.

● **GROUND CLEARANCE**

RT165                      7.3" (185 mm)



● **LIFT HEIGHT**

RT165                      119.6" (3038 mm)



● **OPTIMIZED RADIAL LIFT ARM**

Durable design provides increased strength and optimal loading performance.

● **MACHINE WIDTH OPTIONS**

The RT165 has a width of 71.3" (1811 mm) when outfitted with wide tracks and 68" (1727 mm) with the narrow track option.

Customize your width for applications needing a more compact machine. A narrow frame is available to special order with a 66" (1676 mm) overall width.

# PERFORMANCE

● POWER and ● PERFORMANCE

NEW

## PILOT SERIES - TRACK LOADERS



The Pilot Series Track Loaders from Gehl are the IDEAL machines. Featuring our revolutionary seat mounted pilot-operated control system, the Pilot Series is the ideal mix of simplicity and technology. Our controls move with the operator, even on bumpy terrain and eliminates the need for floor-mounted control towers for more legroom and operator comfort.

### TWO ADDITIONAL MODELS IN THE GEHL PILOT SERIES LINE-UP

#### RT165

Dual-Hand,  
Hand/Foot or  
Pilot Control Joystick  
*Shown on pg. 8*



#### VT320

Pilot Control  
Joystick Only  
*Shown on pg. 14*



#### RT185



#### RT185

### ● RATED OPERATING CAPACITY

RT185	<b>1,850 lbs. (839 kg)</b>
RT215	<b>2,150 lbs. (975 kg)</b>
RT255	<b>2,550 lbs. (1157 kg)</b>

### ● TIER IV ENGINES

	POWER	TORQUE
RT185	69.9 hp (52.1 kW)	178 ft.-lbs. (241 Nm)
RT215	72 hp (53.7 kW)	217 ft.-lbs. (294 Nm)
RT255	74.3 hp (55.4 kW)	243 ft.-lbs. (330 Nm)

● **LIFT HEIGHT**

RT185	128" (3251 mm)
RT215	128" (3251 mm)
RT255	128" (3251 mm)

● **GROUND CLEARANCE**

RT185	12.5" (318 mm)
RT215	12.6" (320 mm)
RT255	12.3" (313 mm)



RT215



RT255

RT215

RT255

● **PILOT JOYSTICK CONTROLS**

The hydraulic-pilot controls found in the Gehl skid loader line control the all-new Pilot Series track loaders. By mounting the controls to the seat, they move with the operator.

# PERFORMANCE

● POWER and ● PERFORMANCE

## VT320: SUPER SIZE YOUR FLEET

The VT320 is the largest vertical lift track loader in the Gehl family of products. Featuring a 3,200 pound rated operating capacity, this track loader is the perfect solution for lifting heavy loads and loading (or unloading) trucks.

● **IDEALTRAX™**  
**INDUSTRY EXCLUSIVE**  
AUTOMATIC TRACK TENSIONING SYSTEM



● **POWERFUL BREAKOUT FORCES**

Class-leading lift breakout force and high tilt breakout force give you the power needed to break out concrete slabs, frozen piles of dirt or remove tree stumps.

	TILT	LIFT
VT320	9,901 lbs. (4491 kg)	7,491 lbs. (3398 kg)

### IdealAccess™



● **FOLD-UP DOOR**

The Gehl patented design provides cab-to-canopy versatility, all while maintaining low clearance and a Level II FOPS certification.

● **PILOT JOYSTICK CONTROLS**

The hydraulic-pilot controls found in the Gehl skid loader line control the all-new VT320 track loader. By mounting the controls to the seat, they move with the operator.

● **RATED OPERATING CAPACITY**

VT320      3,200 lbs. (1452 kg)

● **TIER IV ENGINES**

VT320

**POWER**

114 hp (85 kW)

**TORQUE**

339.3 ft.-lbs. (460 Nm)



● **COUNTERWEIGHT/BUMPER**

Standard rear bumper protects the rear of the machine. Optional side-mounted counterweights increase rated operating capacity by 200 lbs. (91 kg).



● **DEDICATED, WELDED TRACK LOADER CHASSIS**

Designed to aid in superior weight distribution, which enhances stability, grading, tractive effort, and ride control.

● **LIFT HEIGHT**

VT320 130" (3302 mm)

● **GROUND CLEARANCE**

VT320 12.16" (309 mm)



● **VERTICAL LIFT ARM**

The vertical lift path design maintains the forward reach at full lift height. This is ideal for applications that require loading and placement of materials.

● **ADD VERSATILITY**

Lift arm down stops are adjustable for added attachment versatility.

● **ECO MODE**

Allows the machine to run at reduced power while maintaining cycle times.





# LIFT ARM

- RADIAL-LIFT and ● VERTICAL-LIFT

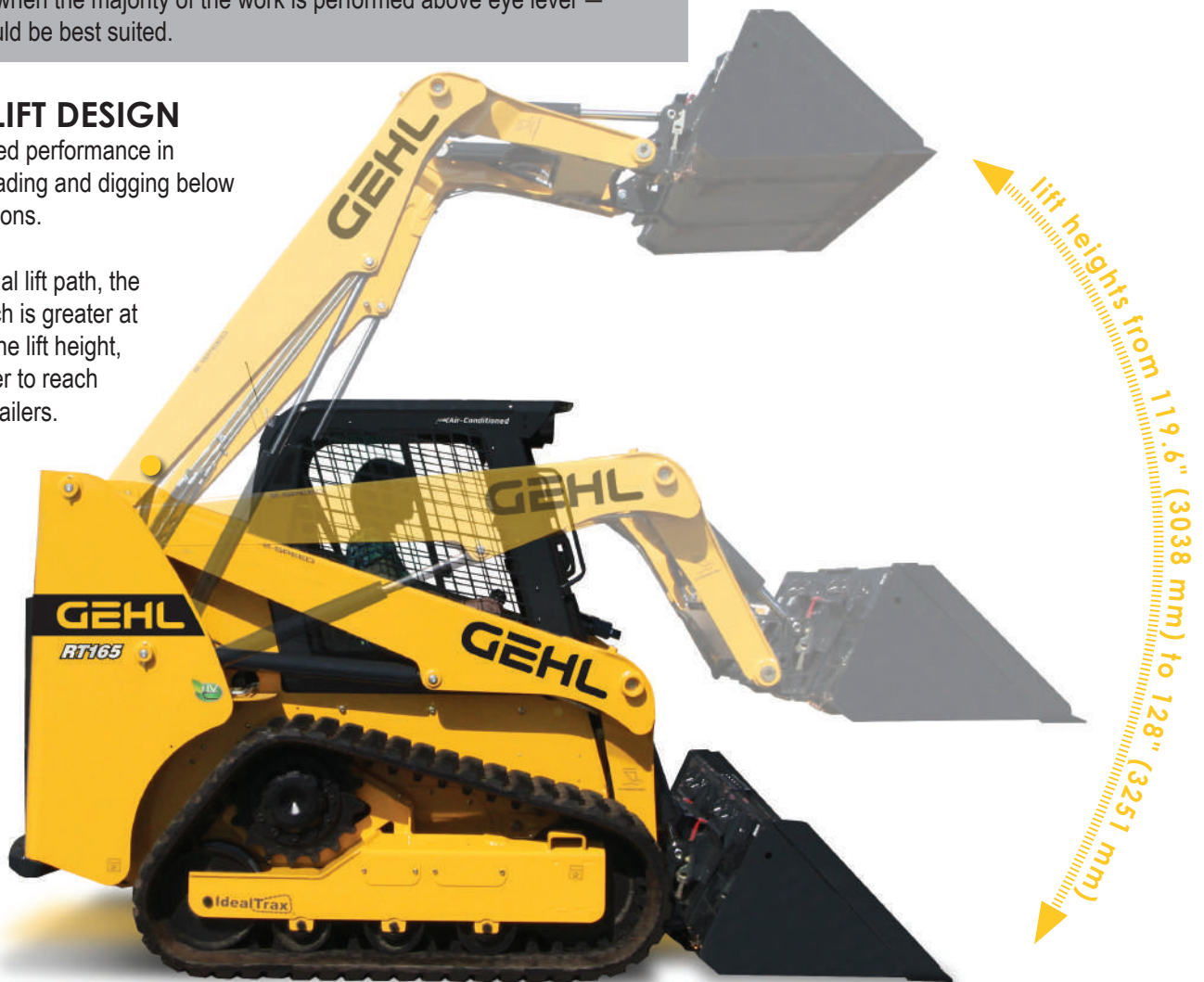
## TWO DESIGNS - ENDLESS POSSIBILITIES

As a general rule, radial lift is best when the majority of the work is performed below eye level, vertical lift is ideal for lifting and dumping at higher heights. For example, when the majority of the work is performed above eye level — vertical lift would be best suited.

- **RADIAL-LIFT DESIGN**

Offers enhanced performance in excavating, grading and digging below grade applications.

Due to the radial lift path, the maximum reach is greater at the middle of the lift height, making it easier to reach the center of trailers.



- **EXCELLENT FORWARD REACH**

The Gehl radial-lift track loaders provide excellent forward reach at the middle of the lift path. This provides high performance for loading flatbed trucks, backfilling or dumping over a wall.

● **VERTICAL-LIFT DESIGN**

Providing more reach at full lift height is optimal for applications that require loading and stacking at high heights. By keeping the load closer to the machine, lift capacities are increased over radial-lift models.



● **TRUE VERTICAL**

The VT320 has a true vertical lift path of almost 11 feet.



● **REAR VISIBILITY**

Rear lift arm support bar is positioned out of the sight line as the lift arm is raised. This allows for excellent visibility to the rear through the entire lift cycle.

# OPERATOR STATION

## COMFORT and SAFETY



### ELECTRIC ATTACHMENT CONTROL

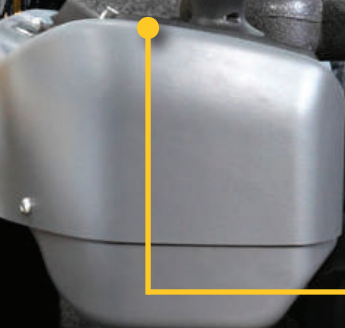
This factory-installed option controls multi-function attachments directly through the joystick.

Pilot controls

EH controls

### PREMIUM SEAT

Standard deluxe, high-back mechanical suspension seat or an optional air-ride seat for operator comfort.



### OPERATOR PRESENCE

Brakes are applied and hydraulics are disabled whenever the operator raises the restraint bar, leaves the seat or switches off the ignition.

### CREATURE COMFORTS

Dome light, cup holder, two 12-volt outlets, and multiple adjustable air vents.

RT Series GEN:3 model cab shown

**VISIBILITY** A cab-forward design enhances the view to the bucket cutting edge from the operator's seat. Extra-large side screens combined with a low-profile lift arm design provide a wide field-of-view to the side work areas.

### ARMRESTS/RESTRAINT BARS

All instrumentation and fully adjustable joystick control towers are conveniently located on the armrests for easy access. High-mounted restraint bars provide ample clearance for the operator's legs.

### PRESSURIZED CAB

Optional, pressurized sealed cab enclosure with sound reduction material and large rear-mounted cabin air filter provides a cleaner and quieter operating environment.

● OPERATOR STATION FEATURES



**REAR VIEW CAMERA**  
Increase visibility to the rear of the machine with a rear view camera.



**RADIO OPTION**  
Factory installed, this AM/FM deluxe radio option customizes your cab.



**CLIMATE CONTROL**  
Heat is standard on all cab models. Upgrade to air conditioning for additional comfort.



**INTEGRATED LCD DISPLAY**

Easy-to-use, multi-function display incorporates all warning/operation lights and machine configuration screens. Single button allows for simple scrolling and selection of various display functions.

*Available on RT105, RT165, RT185, RT215, RT255 & VT320*

**STRAIGHT TRACKING**

Tracking is easily corrected from the operator seat using the display. It can also be used to compensate for offset or side-loaded attachments.

*Available on RT175, RT210 & RT250*

**DRIVE SENSITIVITY ADJUSTMENT**

Five settings are available to adjust the operator drive speeds and response times. Each user can customize the control to their preference using the LCD display.

*Available on RT175, RT210 & RT250*

Drive Sensitivity Adjustment	Operator Feel Emulation
<b>5 - Rabbit</b>	+ 20% = Fastest • Highly Responsive • Highest Volume
<b>4 - ●</b>	+ 10% = Quick • Very Responsive • Control
<b>3 - ●</b>	Standard Setting • Normal Response Time • Focused Productivity
<b>2 - ●</b>	- 10% = Precision • Improved Control
<b>1 - Turtle</b>	- 20% = High Precision • Easy Control • More Precise



# SERVICE & SAFETY

● MAINTENANCE and ● SAFETY

● EXCELLENT 360 DEGREE VISIBILITY

FRONT

LEFT SIDE

REAR

RIGHT SIDE

*RT Series GEN:3 model cab shown*

## EXCELLENT VIEWS FROM ALL SIDES FOR SAFE AND PRECISE OPERATION.

Excellent visibility to the front, sides and rear of the machine allow for precise placement of loads and reduced jobsite incidents. A high-mounted seat provides an excellent vantage point to the attachment and cutting-edge.

# LESS DOWNTIME PUTS MONEY IN YOUR POCKET

## ● IDEALTRAX™ INDUSTRY EXCLUSIVE AUTOMATIC TRACK TENSIONING SYSTEM

- ▶ Eliminates the need for manually tensioning the tracks on the loader before operation, saving valuable time on the jobsite.
- ▶ Increases the life of the tracks (*up to 15%\* in tested conditions*), sprockets and bearings by ensuring the proper tension immediately upon start-up and during use, and tension release when the machine is shut down.
- ▶ Track changes in the field are facilitated with the simple flip of a switch in the rear compartment. Removing a track without the IdealTrax™ system can take up to one hour per track. With IdealTrax™, it takes just minutes.

\*Track life improvement varies greatly depending on conditions, application and upkeep; results may vary.



ENGINE NOT RUNNING



ENGINE RUNNING

### ● 17-TOOTH SPROCKETS

17-tooth, forged drive sprockets have 40% more hardness depth for improved sprocket life. Larger sprockets increase track-to-chassis clearance, so tracks can be cleaned out with ease.



### ● ENGINE ACCESS

Full access to filters and fluid reservoirs for servicing and maintenance is made possible by a swing-out rear door and a large, lockable engine cover.

### ● SWING OUT COOLER

Only available on RT165

### ● TILTABLE ROPS/FOPS ASSEMBLY

Featuring gas-spring assist for easy internal access to the pumps, hydraulic valve bank and drive motors.

### ● SAFETY RESTRAINT

Innovative restraint allows for secure positioning of the cab in the maintenance position. Restraint can be secured in position by one person.

### ● TILT-OUT FOOT POD

This feature allows for best-in-class foot well cleanout and provides perfect access to the fuel tank and other components under the cab.

Not available on RT105 & RT165



## PROTECT YOUR INVESTMENT.

Trust the experts.  
Make the *right* choice.

You expect year-to-year productivity from your Gehl equipment. That's why your trained and accredited Gehl dealer offers you the experience and skill necessary to maximize your equipment's performance. From routine maintenance to XPRT Genuine Parts to XPRT Protection Plan, your Gehl dealer is a partner you can count on to keep your equipment running smoothly.



**XPRT**  
GENUINE PARTS

## ROUTINE Maintenance



Eliminate unexpected repair costs and take better care of your Gehl equipment with the XPRT Protection Plan®. It ensures repairs will be made quickly with manufacturer-approved XPRT genuine parts by trained mechanics. If you're interested in saving money over the long haul, the XPRT Protection Plan® is an investment you should consider.

Features include:

- Affordable options available to meet your needs
- Select either powertrain component or full machine coverage for the right kind of protection for your equipment
- You decide the number of years and hours of coverage needed
- Enroll in the Plan on the day you purchase eligible equipment, or any time within six months or 500 hours from equipment registration

**XPRT**  
PROTECTION PLAN

**GEHL**