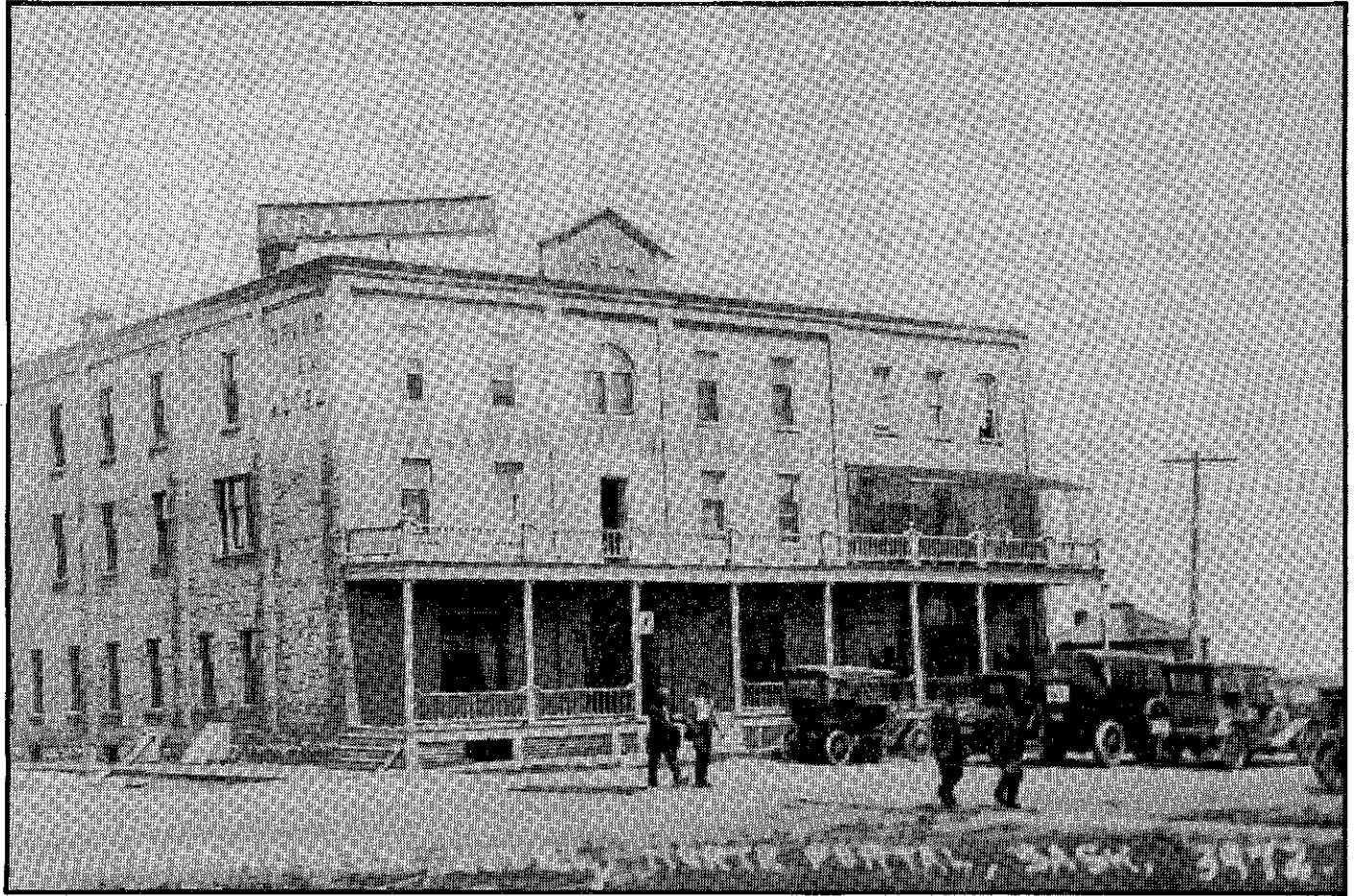


Historical GRAND VIEW HOTEL



The Grand View Hotel was a gambling haunt and distribution centre for illegal booze during the 1920's.

It is located only a few feet from the International Boundary.

In the early 1900's the Grand View (located directly across the road from the Sooline Railway Station) was a popular stop for settlers coming to this area via the U.S. who travelled on the Soo Line, which was the only transportation. This railway was an important link between Canada and the United States, bringing in American immigrants, as well as a number of colorful characters who profited from Prohibition. These settlers and their livestock were checked at the Canada Custom which existed about 100 feet to the left.

For a time, it was legal for Canadian distributors to sell booze for export, however it was illegal for Americans to bring it across the border. Back in the roaring twenties and the days of prohibition, Saskatchewan and this area was referred to as the rum running capital of the world. Rum runners would ob-

tain the booze from stashing points such as the Grand View or liquor warehouses called "boozoriums", and sneak their precious cargo into the States.

Gamblers as well as rumrunners frequented the Grand View in its heyday, apparently attracting some of the well-known players from Chicago. Al Capone occasionally visited this area and was guest at the Grand View Hotel. Capone's gang of smugglers used the Grand View as a meeting place.

Legend has it that some of the big-winning gamblers never left the Grand View. A sign over an abandoned well beside the hotel tells of guests who disappeared after cleaning up at the gambling tables, leaving their belongings untouched in their rooms and train tickets unused. It's rumored that they may have ended up at the bottom of this 60-metre well.