

COMPASSION  CONNECTS  
COMMUNITY

# KIRK CARE NEWSLETTER



## From the Pantry



As we enter into Spring, the pantry continues to be a bustling hub of activity. Weekly volunteers assist with date sorting, categorizing and shelving donated products. A majority of clients still prefer to have groceries delivered to their homes, and delivery volunteers continue to accommodate those requests. However, our new in-person initiative is gaining momentum and thus, the pantry sees a lot more traffic on certain days when we open up for our clients to do their own shopping. Since it's launch this past October, we've seen a steady rise of in-person shoppers in the pantry.

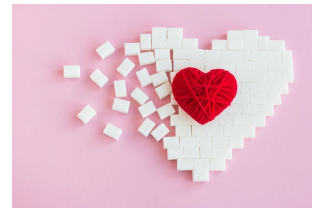
Waigand Wheels and St. Louis ARC, both organizations that empower people with developmental disabilities, come into the pantry three or more times per week to prepare a box of groceries to deliver to one of our three HUD assisted senior citizen residences. They clearly enjoy the process of selecting food items and boxing them up for delivery. Additionally, most Mondays during the school year, Super Seniors from KHS Special Ed come in for an hour to perform small tasks for the pantry.

In the first quarter of 2024, we have hosted high schoolers from KHS and Cor

Jesu who fulfilled community service hour requirements. It's great to have their high energy, strength, and speed to get things done! And they're all so enjoyable to be around.

## Quote of the Month

After a young boy and his mom volunteered in the pantry he shared, "I knew that it felt good to have other people do things for you. but I never knew that it also feels good to do things for other people." Tyler, 8.



## Nipher Knocks It Out for Kirk Care

On March 1, 2024 Nipher Middle School held a Knock-Out Tournament to raise money for Kirk Care! Each grade level had a time in the gym and each student could pay \$1 to participate. They used 6 baskets. By following the rules shared, for the first 8 minutes of competition, the "knocked out" player could buy their way back in by paying \$1. Then the students played for a time without being able to buy their way back in—this pared the playing field down to two from each basket. They moved to one basket together and resumed the buy-in feature for a time. Then, it was 'do or be knocked out!' Each class had a winner and two runners-up. It was a great time, but the real winners are our community as the event raised both awareness and \$654 for Kirk Care!



6<sup>th</sup> Grade  
DJ Moorehead, \*Sophia  
Hayes, Isaac Rappaport



7<sup>th</sup> Grade  
Schuyler Smith, \*Owen  
Drozda, Connor Mess



8<sup>th</sup> Grade  
\*Gavin Murphy, Olive  
Donaldson, Connor  
Bussen

## Food For Fines 2024



## Food For Fines 2024

Sunday March 24 thru

Saturday March 30th

Join us in partnership with Kirkcare.

- Bring unexpired canned or boxed goods to the library between March 24th and March 30th
- Each item is considered \$1 and can be used towards the payment of Kirkwood fees up to \$25. Fees can include any charges on your account that are from Kirkwood Public Library or for Kirkwood Public Library Items.
- No credit will be given and we cannot waive fees for materials for other libraries in our consortium.

Thank you for your help and support!



## Ways To Give



Donations of nonperishable food items can be made at the local red boxes. The boxes are located at The Kirkwood Train Station, The Kirkwood YMCA, Kirkwood Library, Kirkwood Community Center and Webster Hills Methodist Church Christian Life Center (Corner of Lockwood and Berry).



Financial donations can be made using the City of Kirkwood Utilities form or on the [website](#). Financial donations help provide utility assistance and purchase food for the pantry.

[More Information](#)

©2024 Kirk Care | 63122, Kirkwood, Missouri, United States

[Web Version](#)

[Preferences](#)

[Forward](#)

[Unsubscribe](#)

Powered by  
[GoDaddy Email Marketing](#)®