

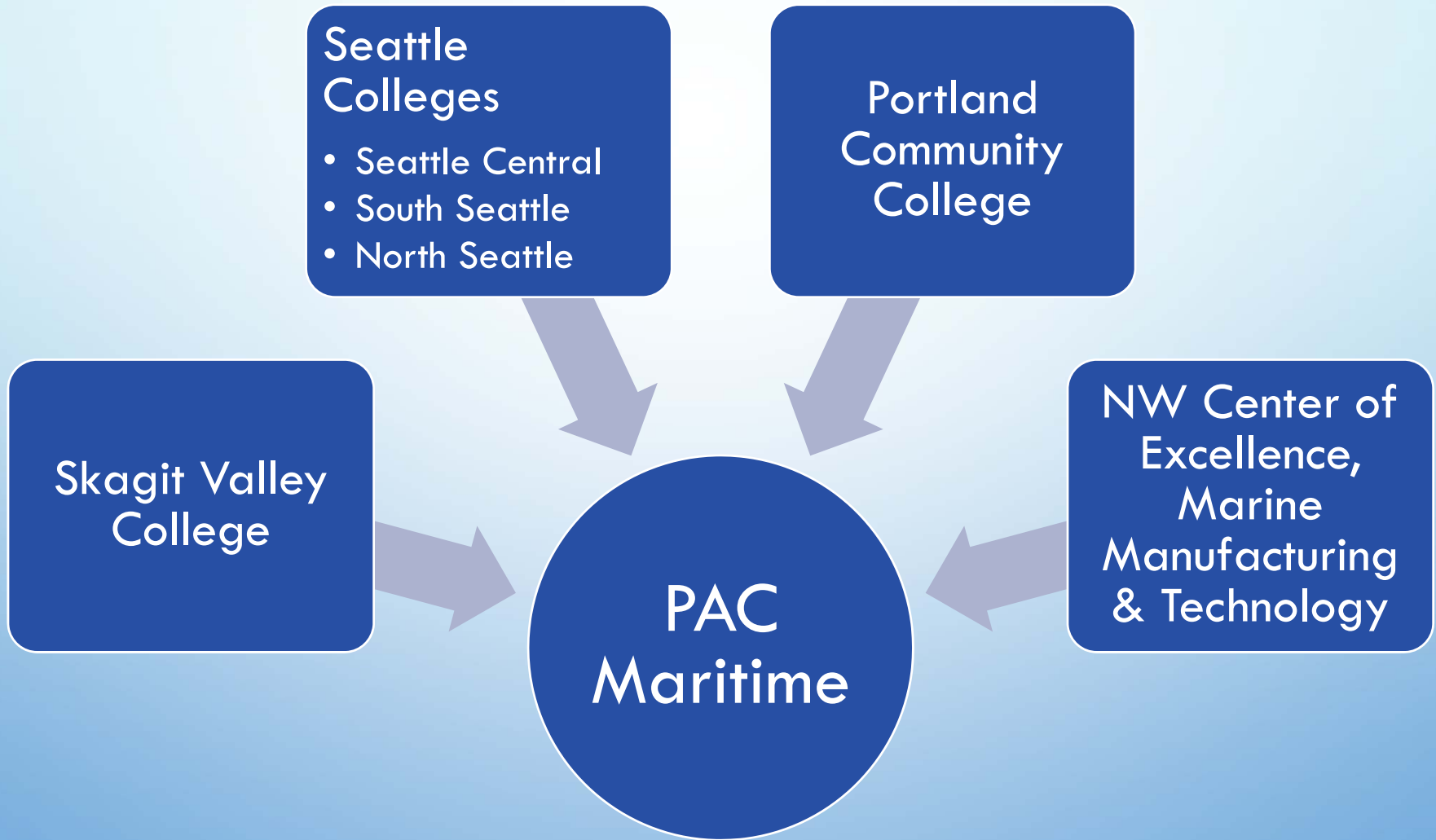


TRIVIA QUESTIONS

PACIFIC MARITIME INDUSTRIES EDUCATION
ALLIANCE,
PAC MARITIME

DOMESTIC MARITIME CENTERS OF EXCELLENCE
MARITIME WORKS: CONSORTIUM SHOWCASE MEETING
SAN DIEGO, CALIFORNIA
JANUARY 29, 2019

PAC MARITIME



SKAGIT VALLEY COLLEGE PROGRAMS

- COMPOSITES
- DIESEL POWER
- MANUFACTURING
- MARINE MAINTENANCE
TECHNOLOGY
- TECHNICAL DESIGN
- WELDING



MARINE MAINTENANCE TECHNOLOGY

- STANDARDS BASED & INDUSTRY DRIVEN CURRICULUM
- MARINE LEAGUE OF SCHOOLS
- DEDICATED 20,000 SQUARE FOOT FACILITY
- STRONG K12 CONNECTIONS



MARINE MAINTENANCE TECHNOLOGY

- PROGRAM FOCUS:
COMPREHENSIVE MARINE
TECHNOLOGY PROGRAM
- 3RD PARTY CERTIFICATIONS: ABYC,
NMEA, OSHA 10, EPA PART 608
- INDUSTRY SECTORS SERVED
 - RECREATION
 - SMALL COMMERCIAL –
MILITARY/GOVERNMENT
 - COMMERCIAL FISHING



NW CENTER OF EXCELLENCE, MARINE MANUFACTURING & TECHNOLOGY

- WORKFORCE & ECONOMIC DEVELOPMENT STRATEGY TO BUILD & SUSTAIN WASHINGTON'S COMPETITIVE ADVANTAGE IN THE MARITIME INDUSTRY, CONNECTING INDUSTRY & EDUCATION
- THE CENTER MAINTAINS STRATEGIC LOCAL, STATE & NATIONAL PARTNERSHIPS AND COLLABORATIONS
- DRIVEN BY INDUSTRY: PROGRAMMING & PROFESSIONAL DEVELOPMENT



INDUSTRY PARTNERSHIP NETWORK

- YANMAR
- YAMAHA
- EVINRUDE
- SEA STAR
- FLUKE
- TRIDENT SEAFOODS
- VIGOR INDUSTRIAL
- DAKOTA CREEK INDUSTRIES
- WASHINGTON STATE FERRIES
- NICHOLS BROS BOAT BUILDERS
- MASTER VOLT
- HUNTINGTON INGALLS INDUSTRIES
- JOHN DEERE
- ARMSTRONG MARINE
- SAFE BOATS INTERNATIONAL
- MUNSON BOATS
- RENAISSANCE MARINE
- ALL AMERICAN MARINE

ASSOCIATION/GOVERNMENT PARTNERSHIP NETWORK

- AMERICAN BOAT & YACHT COUNCIL
- NATIONAL MARINE ELECTRONICS ASSOCIATION
- LATINO CIVIC ALLIANCE
- AMERICAN COMPOSITES MANUFACTURER'S ASSOC.
- WASHINGTON PUBLIC PORTS ASSOCIATION
- PUGET SOUND SHIP REPAIR ASSOCIATION
- WASHINGTON STATE LABOR COUNCIL
- AMERICAN WELDING SOCIETY
- NW MARINE TRADE ASSOCIATION
- NATIONAL SHIP RESEARCH PROGRAM
- SEA SISTERS
- PACIFIC LUTHERAN UNIVERSITY
- OFFICE OF THE SUPERINTENDENT OF PUBLIC EDUCATION
- TRIBAL GOVERNMENTS
- WASHINGTON SEA GRANT
- NATIONAL MARITIME EDUCATION COUNCIL



SEATTLE COLLEGES
Central · North · South · SVI



SVC | Skagit Valley College



PAC MARITIME

ADDITIONAL
INFORMATION

ANN AVARY | (O) 360.766.6282 X3001
(M) 360.301.4912 | ANN.AVARY@SKAGIT.EDU



TRIVIA QUESTIONS

DMCOE Maritime Showcase Portland Community College

January 29, 2019

Presented by Dr. Karin Edwards

Portland Community College (PCC)

- Located in Portland, Oregon, PCC is a public, two-year, comprehensive community college serving approximately 75,000 students.
- It is the largest institution of higher education in the State of Oregon.
- Mark Mitsui, former Deputy Assistant Secretary for Community Colleges in the US Department of Education is the current district president.

The college has four full campuses and 7 centers throughout the Portland metro region and it offers 70+ degrees and 160+ certificate programs.



CASCADE



SOUTHEAST



ROCK CREEK



SYLVANIA

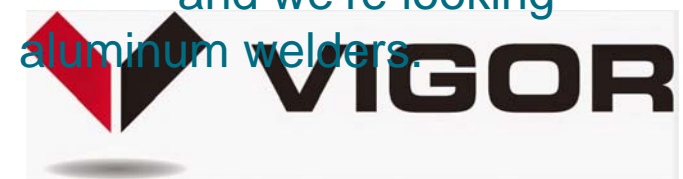
In North Portland, under the auspices of the Cascade Campus, is the college's Swan Island Trades Center.

- The Swan Island Trades Center is a 20,000-square-foot facility housing the college's Apprenticeship and Trades department
- Offered at Swan Island are the Facilities Maintenance Technology two-year degree; Facilities Maintenance Technology and HVAC Installers certificates; Millwright, Industrial Mechanics, Limited Maintenance Electrician, Manufacturing Plant Electrician and Stationary Engineer apprenticeships; and the Limited Building Maintenance Electrician training program.

- Swan Island is located at the confluence of the Columbia and Willamette rivers and nine miles northwest of downtown.
- Operated by the Port of Portland, the island has played a significant role in the development of waterborne commerce in Oregon and the history of the Port.
- Swan Island Industrial Park is a major corporate center and hub for distribution, warehousing and manufacturing activities.



- Vigor Industrial is the leading provider of shipbuilding, complex fabrication and ship repair and conversion in the Pacific Northwest and Alaska.
- Headquartered in Portland, Vigor is a major corporation on Swan Island. Their 60 acre shipyard is one of the biggest and most capable on the west coast. Vigor recently received a 1 billion dollar contract from the US Army to build a prototype of its army landing craft. This grant is expected to create at least 300 jobs.
- Vigor and PCC joined forces in 2008 to provide welding training opportunities that support the local manufacturing industry. Vigor was instrumental in the college acquiring space and building our Swan Island facility. Together, we unveiled the new training center in 2014 and in 2016 expanded the curriculum to include maritime welding, and we're looking to expand our capacity for training aluminum welders.



Vigor Shipyard - Portland, OR



- As we pursue federal designation for a Domestic Maritime Center of Excellence, Vigor will certainly be a key partner. Additionally, we have garnered support from other agencies including, the Port of Portland, the Merchant's Exchange, the Working Waterfront Coalition and other businesses on Swan Island.
- In addition to expanding welding and apprenticeship opportunities, we will offer other programs that support the maritime industry. Based on feedback from our community and employer partners, the following programs will be expanded to Swan Island
 - Cyber Security
 - Supply Chain Management- Logistics Engineering
 - Safety Training to include fire, hazmat and FEMA
 - Equity in the Trades
- Each of these programs currently exist at PCC. We can tailor them specifically for the maritime industry.

We're delighted to be part of the PAC Maritime Alliance. As a group, we can monitor and address workforce needs. Additionally, we will also be able to provide a comprehensive array of programs to support the maritime industry, regionally.

Contacts:

Carrie Weikel-Delaplane, Director of Apprenticeships & Trades

E: carrie.weikeldelaplane@pcc.edu | **P:** 971-722-5650

Dan Wenger, Dean of Arts & Professions

E: dan.wenger1@pcc.edu | **P:** 971-722-5235



TRIVIA QUESTIONS

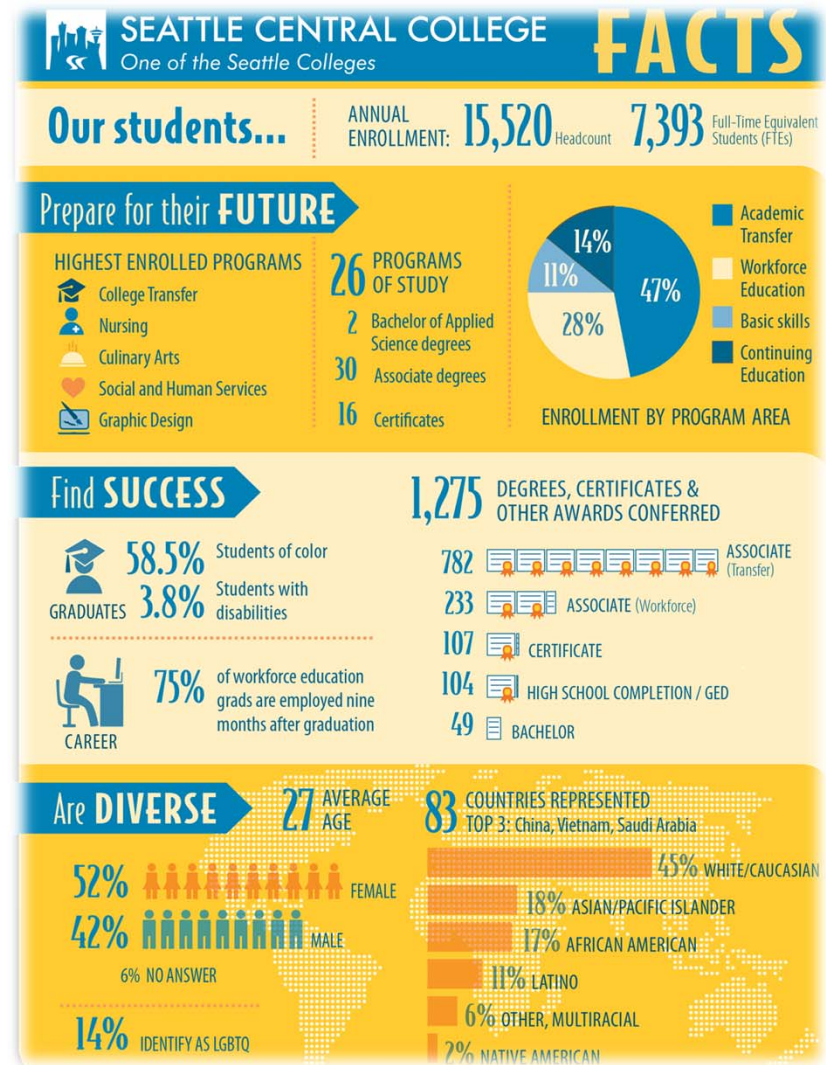
Seattle Colleges



The largest community college district in the state, educating more than 50,000 students each year.

Seattle Central College

- Seattle Maritime Academy
- Boat Building and Repair
 - Wood Technology Center



Seattle Maritime Academy

- Engineering - QMED
- Deck – AB
- Youth Programs
- Future - Marine Electronics
- Future – Marine Engineering Apprenticeship



Boat Building and Repair

- 4 Quarters = Certificate
- 5 Quarters = AAS
- hands-on experience with hull construction, joiner work, outfitting, fiberglass lay-up and repair, spray-gun techniques and resin infusion.
- Moving to Seattle Maritime Academy



South Seattle College

- Apprenticeships
- Maritime Welding (Vigor)



Harbor Island Training Center – Maritime Welding

- Classroom-In-A-Shipyard
- 2 quarter certificate
- Starts twice a year



Boiler Maker Apprenticeship

- International Brotherhood of Boilermakers - Local 104
- Complete metal fabricators



HVAC/Marine Electricians

- IBEW Local 46



North Seattle College

- Mechatronics



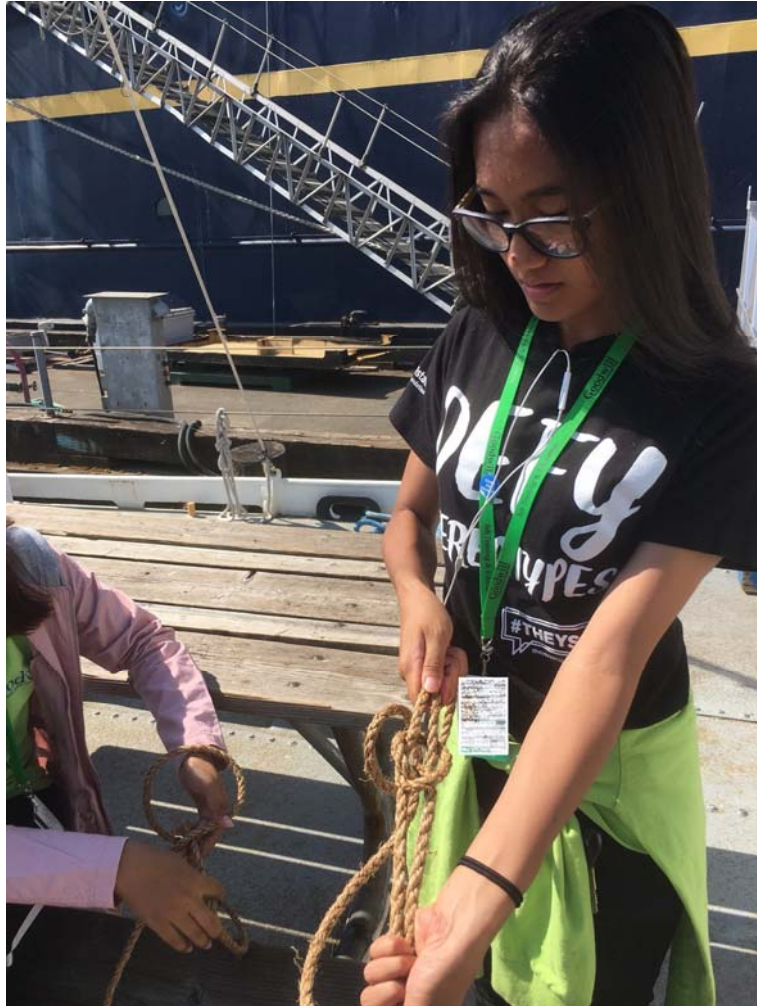
Mechatronics

- 1 year certificate in Industrial Automation and Electronic Controls at North Seattle College
- 1 year at Shoreline Community College to complete certificate in Industrial Maintenance Robotics and Manufacturing
- Stack into the Mechatronics AAS degree





TRIVIA QUESTIONS



K-12 Partnerships & Outreach

- Youth Maritime Collaborative
- Seattle Summer Skill Center Program
- SO²UND Day
- Experience Maritime – Summer Camp
- WA SeaGrant
- NW Career and Technical Academy
- Youth Maritime Training Association (YMTA) – Recruiting & Awareness

Apprenticeships & Pre-Apprenticeships

- Boiler Makers
- HVAC/Marine Electrician
- Underway Maritime Operation Pre-Apprenticeship – Seattle Skills Center – at Seattle Maritime Academy
- AJAC to MJAC Model
- MITEC – 3 occupations



On the Job Training / Internships

- Work experience as part of the program
 - Marine Deck Technology – 90 Sea Days
 - Marine Engineering Technology – 60 Sea Days
 - Marine Technician – 100 Hours in beginning and 100 hours at the end
- Youth Maritime Collaborative
 - High school or recently graduated (18-21 yrs old) summer shoreside internships
 - 180 hour to receive high school credits
 - At Port of Seattle or at maritime companies in King County



Degree & Non-Degree Offerings

- Certificates
- AAS Degrees
- U.S. Coast Guard Credentials
- Third Party Certifications
 - NMEA
 - ABYC
 - EPA 608
 - OSHA 10
 - Powered Industrial Truck
 - First Aid/CPR/AED
 - Food Handlers Card



Professional Development

- Internships
- Externships – Faculty
- Industry Workshops
- Continued Education
- ATF Designation through AWS
- Marine League of Schools



Employer & Regional Economic Development

- Washington Maritime Blue
- Employer Lead Advisory Boards
- Regional Workforce Development Council
- Regional Economic Development Council
- WA State Commerce Department
- City of Seattle
- King County
- Seattle & Tacoma Propeller Club
- Washington Maritime Federation
- City of Anacortes
- NW Marine Trade Association
- NW Seaport Alliance



SEATTLE COLLEGES

Central · North · South · SVI



SVC | Skagit Valley College



PAC MARITIME