



HUONG VU

INTERIOR DESIGN

Purposeful, detail rich spaces,
that are rooted in function,
guided by atmosphere,
and crafted with care.

SELECTED WORKS
2021-2026

ABOUT

Interior designer with experience across hospitality, workplace, healthcare, and residential environments. Background in architectural sciences and project coordination with experience supporting projects from concept through construction.



EXPERIENCE

5+ years in Interior design,
hospitality+ commercial + residential

EDUCATION

Bachelor of Architectural Science
TMU (Ryerson University)
2012

SOFTWARE

AutoCAD | SketchUp | Revit (basics)
Enscape | D5 Render | Twinmotion
Photoshop | InDesign

EXPERTISE

Concept Development
Space Planning
Construction Documentation
Project Coordination
FF&E + Material Selection

CONTENTS

01	HEIST RESTAURANT Hospitality Kingston, ON	8-19
02	OPTICAL EYEWORKS Retail Design Richmond Hill, ON	20-25
03	BEDROOM + BATHROOM RENOVATION Residential Toronto, ON	26-31
04	KITCHEN RENOVATION Residential Toronto, ON	32-37

The image shows a dimly lit interior space, likely a lounge or waiting area. In the foreground, two plush green velvet chairs with gold-colored metal legs are positioned around a small, dark, curved table. The background features a wall of dark, paneled lockers or storage units. Each locker has a brass handle and a decorative panel with a repeating geometric pattern. The floor is made of light-colored wood planks. The overall atmosphere is sophisticated and modern.

01

HEIST RESTAURANT

Hospitality

Kingston, ON

02

OPTICAL EYEWORKS

Retail Design

Richmond Hill, ON



03

BEDROOM + BATH RENOVATION

Residential
Toronto, ON



04

KITCHEN RENOVATION

Residential

Toronto, ON



HEIST RESTAURANT

Hospitality

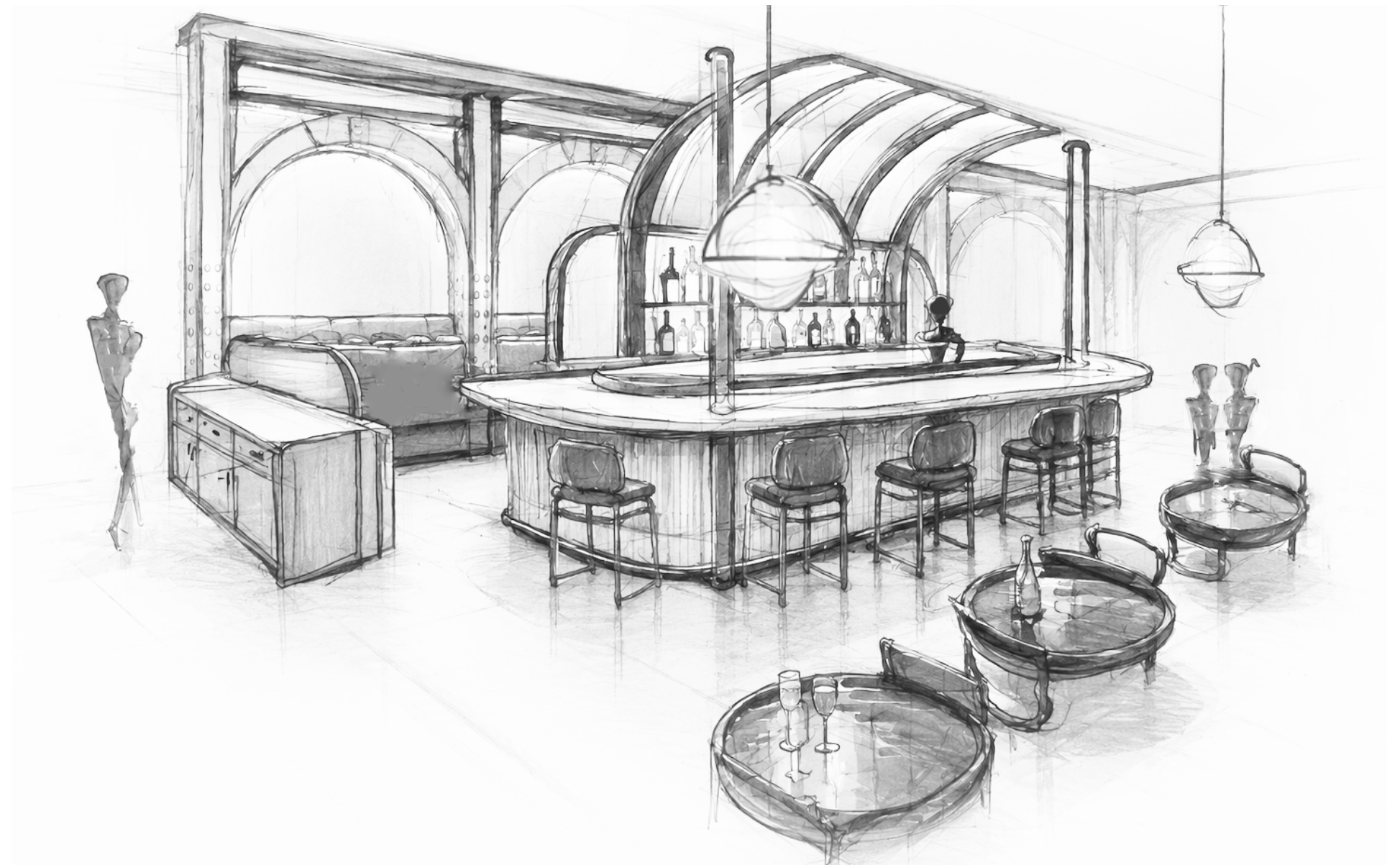
KINGSTON, ON
2021

A reimagined dining experience that balances intimacy and drama through layered lighting, rich materiality, and bespoke details. The design celebrates craftsmanship and atmosphere, creating a sense of warmth and discovery throughout the space.



CONCEPT

Inspired by the romance of old world heist films, the spaces combines natural tones, metallic accents, and custom works to create an atmosphere that feels both timeless and unexpected.



MATERIAL PALETTE



Medium Oak



Limestone Wall



AccentTile



Brass Accent



AF-715 Dolphin



Courtyard Tile

SCOPE OF WORK

Concept Development

Design Development

Construction Documents

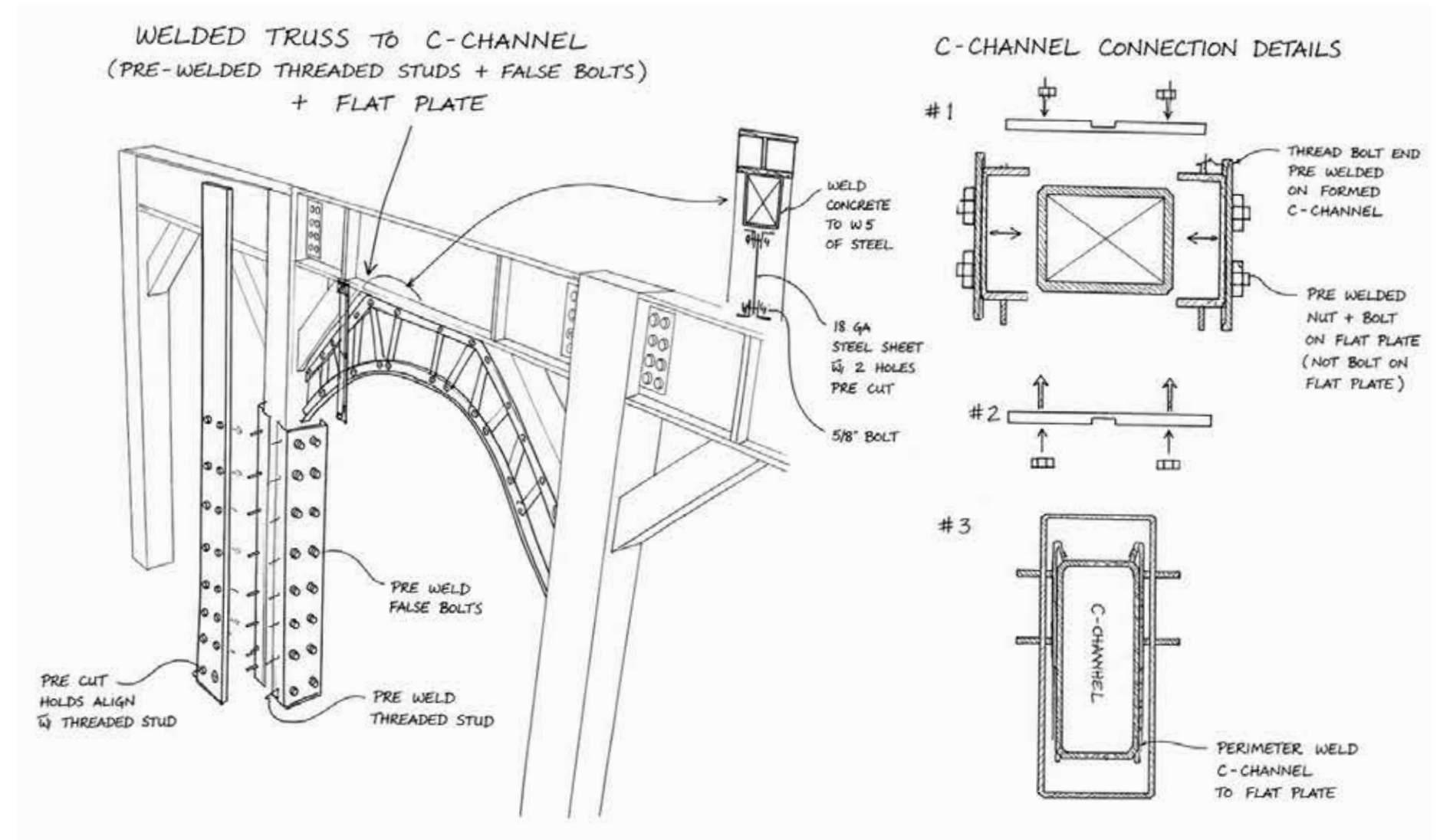
FF&E Selections

Site Visits & Coordination



DETAILS THAT DEFINE

Custom steelwork wraps the existing columns, integrating banquette seating and carefully scaled proportions bring depth and character to the space. The result is a layered dining environment that balances industrial structure with warmth and comfort.

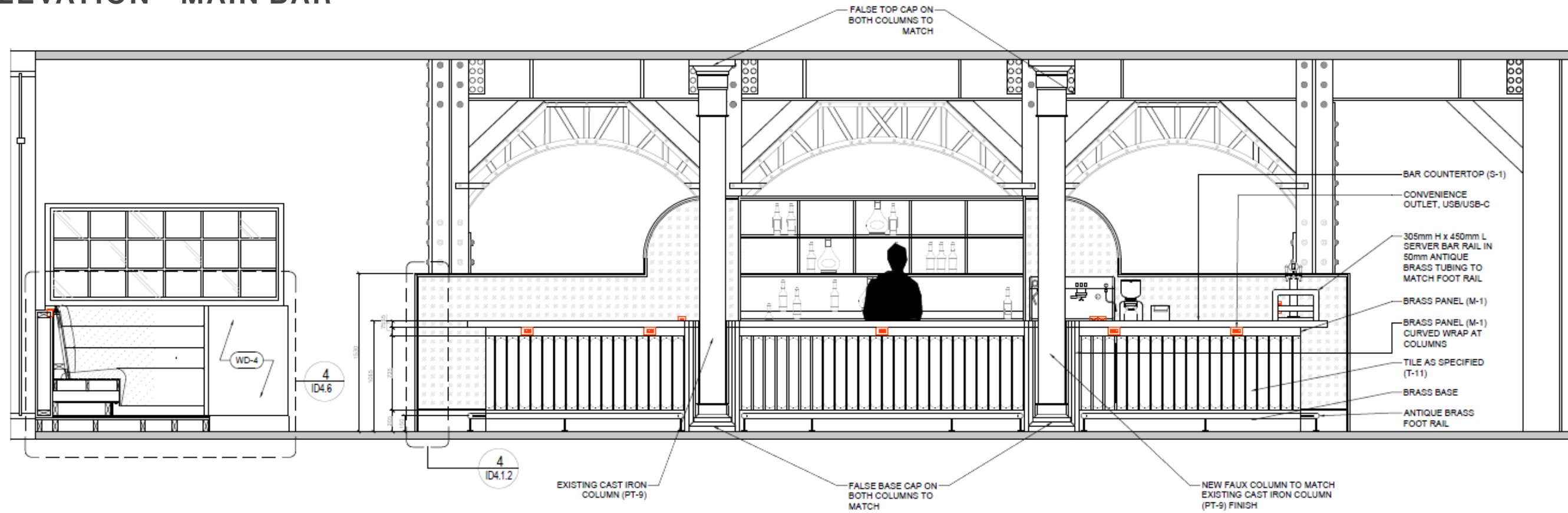


RENDER - STEELWORK BANQUETTE

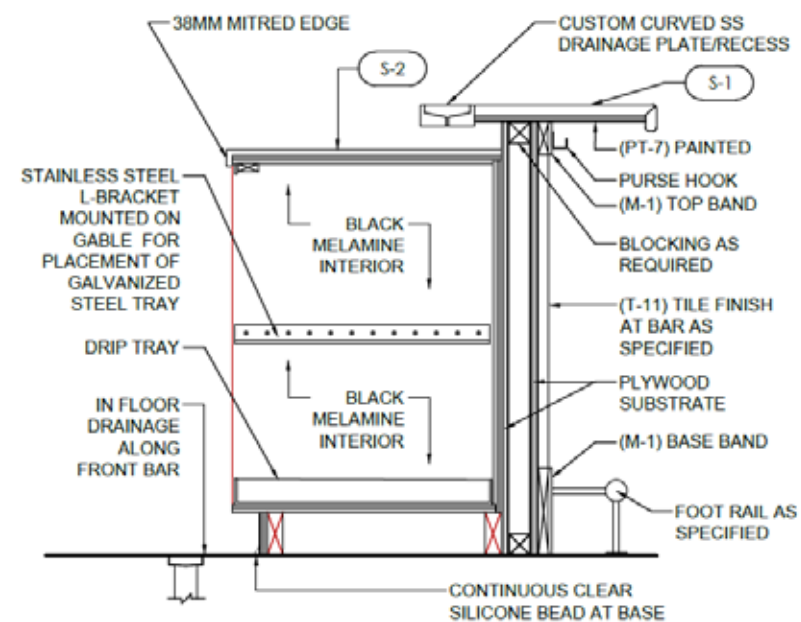




ELEVATION - MAIN BAR

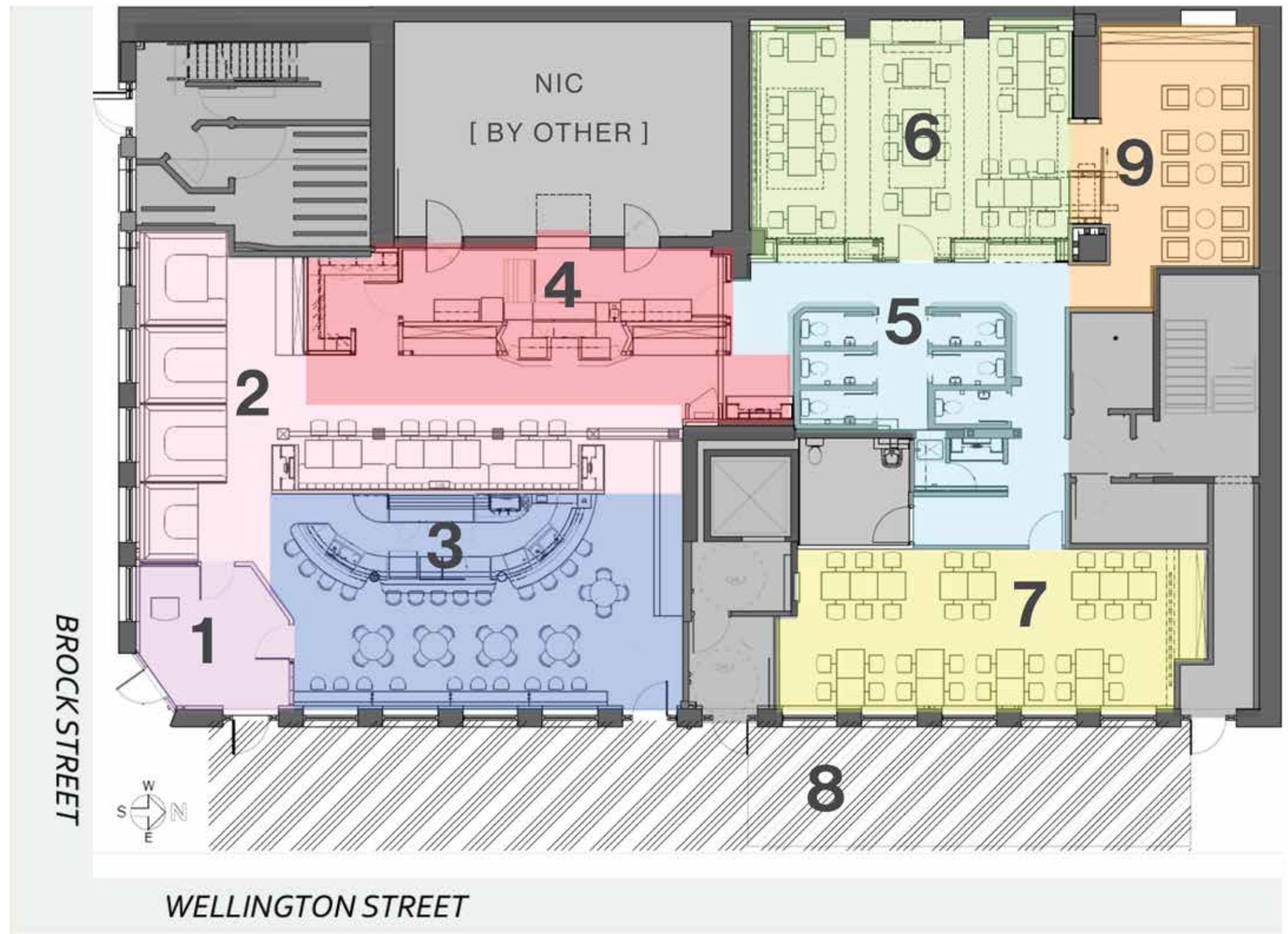


SECTION DETAIL - MAIN BAR



PLAN + ZONING

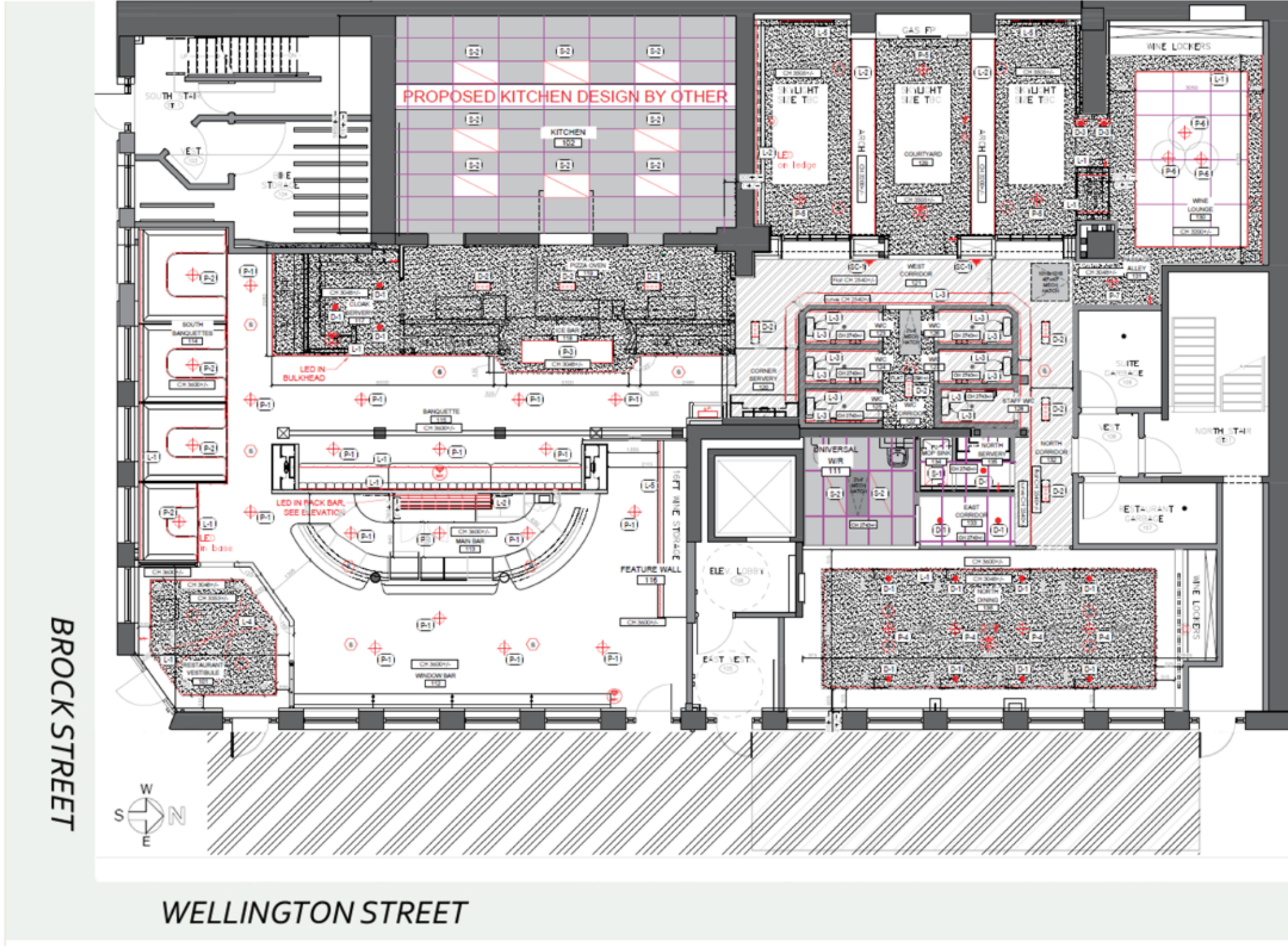
1. Vestibule
2. Banquette
3. Curved Bar
4. Ice Bar/Kitchen
5. Corridor/Washrooms
6. Courtyard
7. Multi-functional Room
8. Outdoor Patio
9. Wine Lounge (Case 168)



CEILING PLAN + LIGHTING

Legend

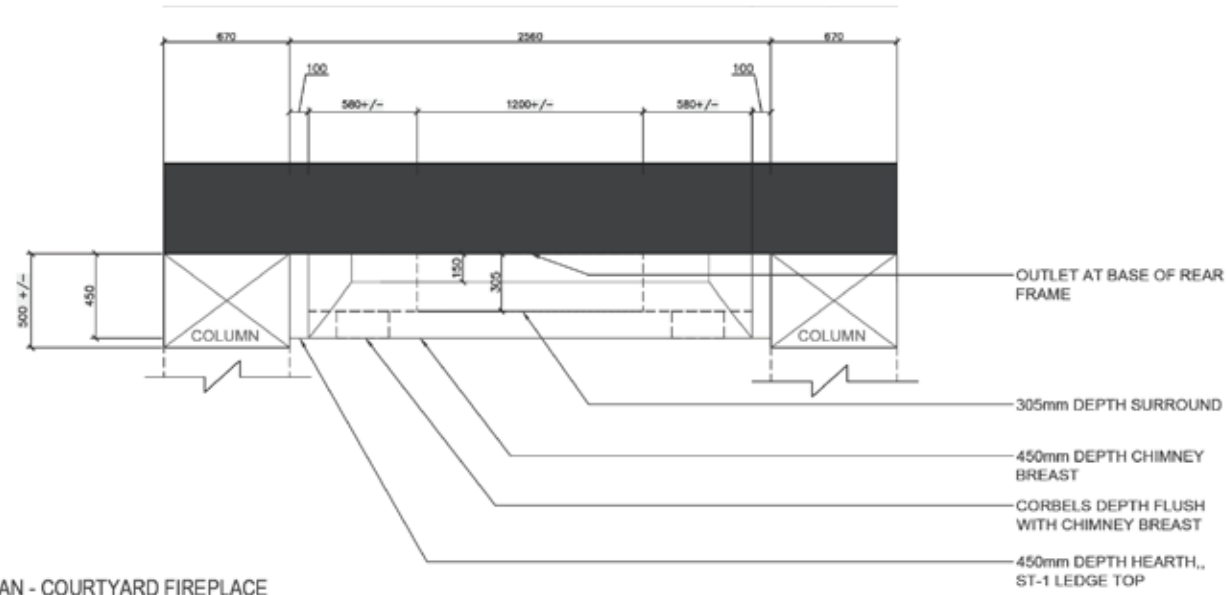
GRAPHIC	DESCRIPTION	GRAPHIC	DESCRIPTION
	L-1, L-2, L-3, L-4, L-5: LED LINEAR ROPE LIGHT		EXPOSED DUCT CEILING TYP. CH 3600 +/- (12'-0" +/-)
	L-1: CEILING & BANQUETTE BACKLIGHTING		FINISHED GWB CEILING CH 3205 +/- (11'-0" +/-) COURTYARD CH 3048 +/- (10'-0" +/-) VESTIBULE, ICE BAR, PIZZA OVEN CH 3353 +/- (11'-0" +/-) INSET VESTIBULE CH 2291 +/- (8'-6" +/-) W/C CORRIDOR
	L-2: BAR MILLWORK DISPLAY SHELVES		FINISH CONCAVE CEILING CH 2540 +/- (10'-0" +/-) WEST & NORTH CORRIDOR CH 2743 +/- (9'-0" +/-) INDIVIDUAL W/C
	L-3: BATHROOM & CORRIDOR RECESSED LIGHTING		GWB W/MDF TRIM CEILING CH 3048 +/- (10'-0" +/-) IN NORTH DINING
	L-4: VESTIBULE FEATURE		TBAR SUSPENDED CEILING 48" x 48" CH 3000 +/- (10'-0" +/-) IN WINE LOUNGE
	L-5: COURTYARD WINDOW WALL BACKLIGHTING		TBAR SUSPENDED CEILING 24" x 48" CH 3048 +/- (10'-0" +/-) KITCHEN CH 2743 +/- (9'-0" +/-) UNIVERSAL W/C MOP SINK NORTH SERVICE EAST CORRIDOR
	D-1: RECESSED DOWNLIGHT (SINGLE)		
	D-2: RECESSED DOWNLIGHT MULTIPLES (TRIPLE)		
	D-3 RECESSED WALL MOUNTED LIGHT (SINGLE)		
	P-1, P-2, P-3, P-4, P-5, P-6, P-7: SURFACE MOUNTED CEILING FIXTURE/PENDANT		
	P-1: MAIN BAR OPEN AREA PENDANT		
	P-2: SOUTH DINING BANQUETTE PENDANT		
	P-3: ICE BAR 28 PENDANT FEATURE		
	P-4: NORTH DINING PENDANT		
	P-5: COURTYARD PENDANT		
	P-6: WINE LOUNGE PENDANT		
	P-7: PASSAGE ALLEY PENDANT		
	S-1: 24X24INCH CEILING LENS FIXTURE		
	S-2: 24X48INCH CEILING LENS FIXTURE		
	SC-1: WALL SCONCE TBC		
	SWITCH CONTROL		
	ELECTRICAL PANEL 2002H x 508W x 146.05D (80H x 20"W x 5.75"D)		
	CEILING MOUNTED RECEPTACLE		
	CEILING MOUNTED DOUBLE JACK CABLE OUTLET, CAT6A		
	CEILING MOUNTED SPEAKER		
	WiFi ACCESS POINTS		



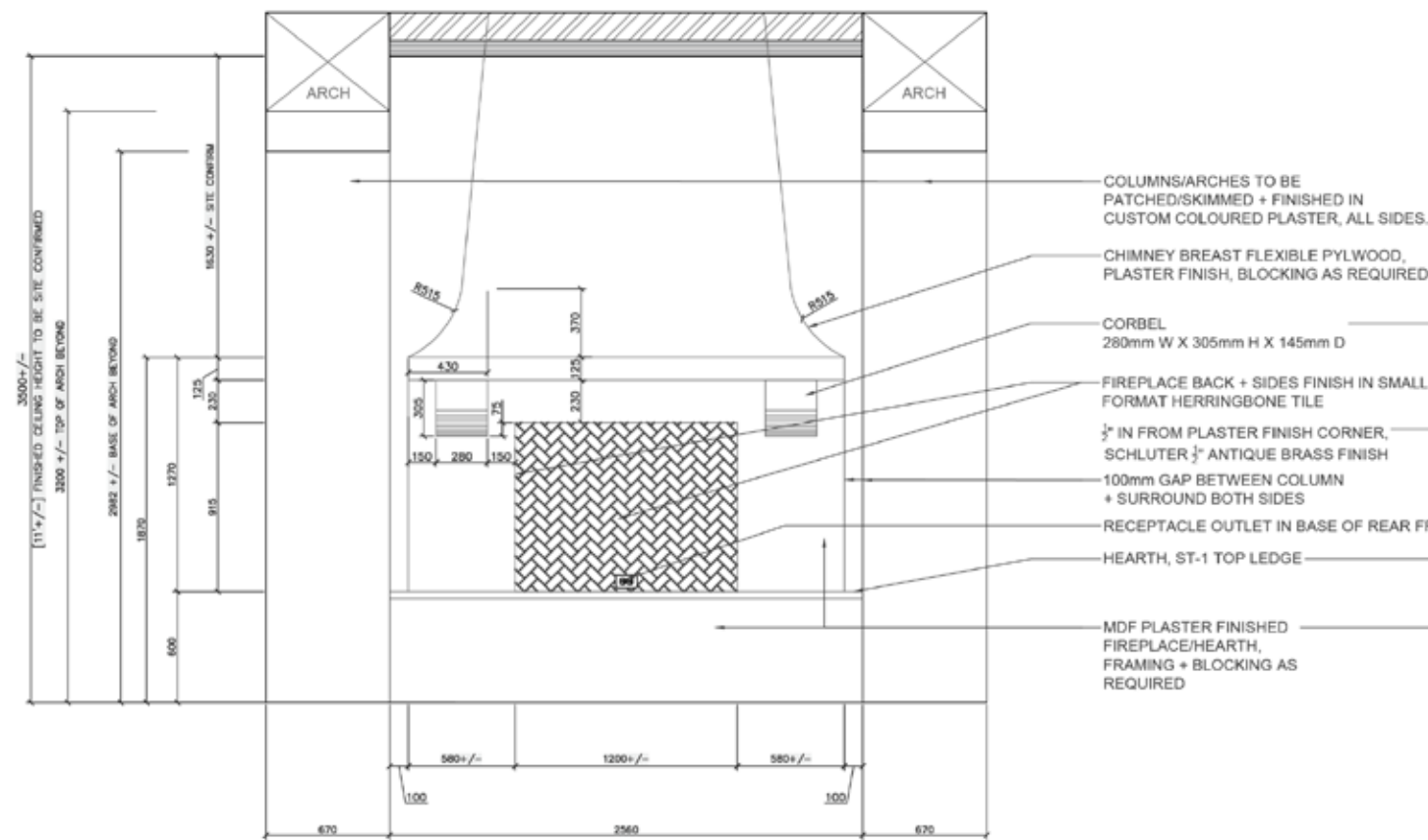
RENDERED INTERIORS



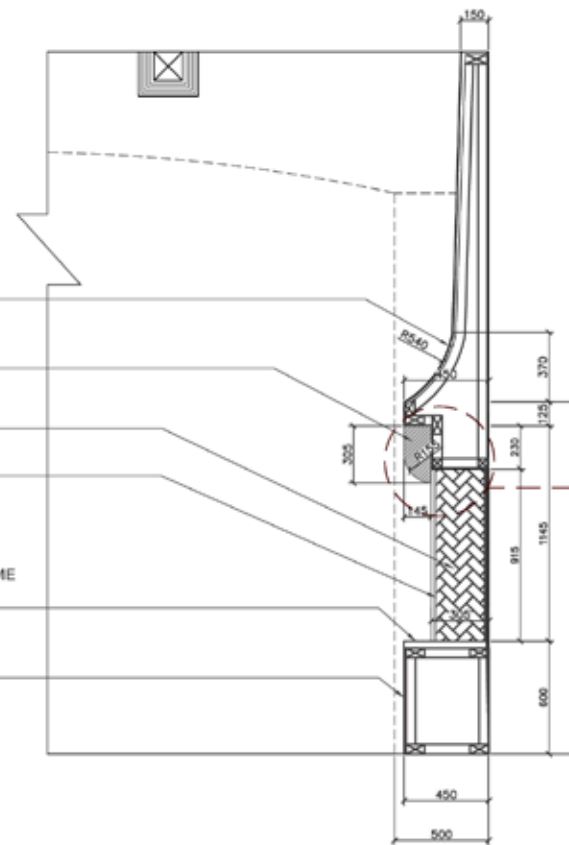
CONSTRUCTION DETAILS



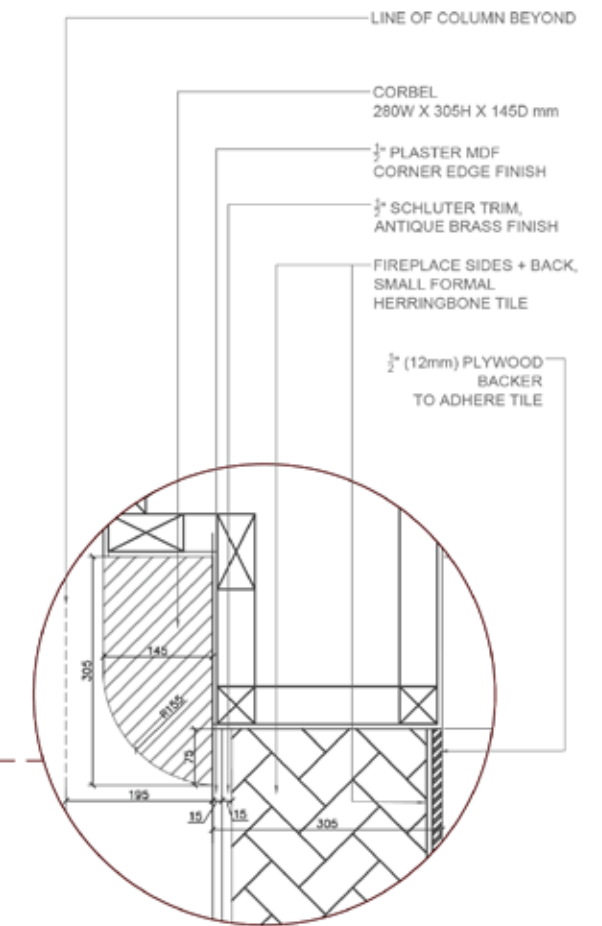
1 PLAN - COURTYARD FIREPLACE
ID48



2 ELEVATION - COURTYARD FIREPLACE
ID48



3 SECTION - COURTYARD FIREPLACE
ID48



4 DETAIL - COURTYARD FIREPLACE
ID48

BUILT PHOTOGRAPHY I



BUILT PHOTOGRAPHY II



OPTICAL EYEWORKS

RETAIL DESIGN




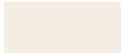
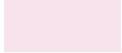
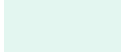
**RICHMOND HILL, ON
2025**

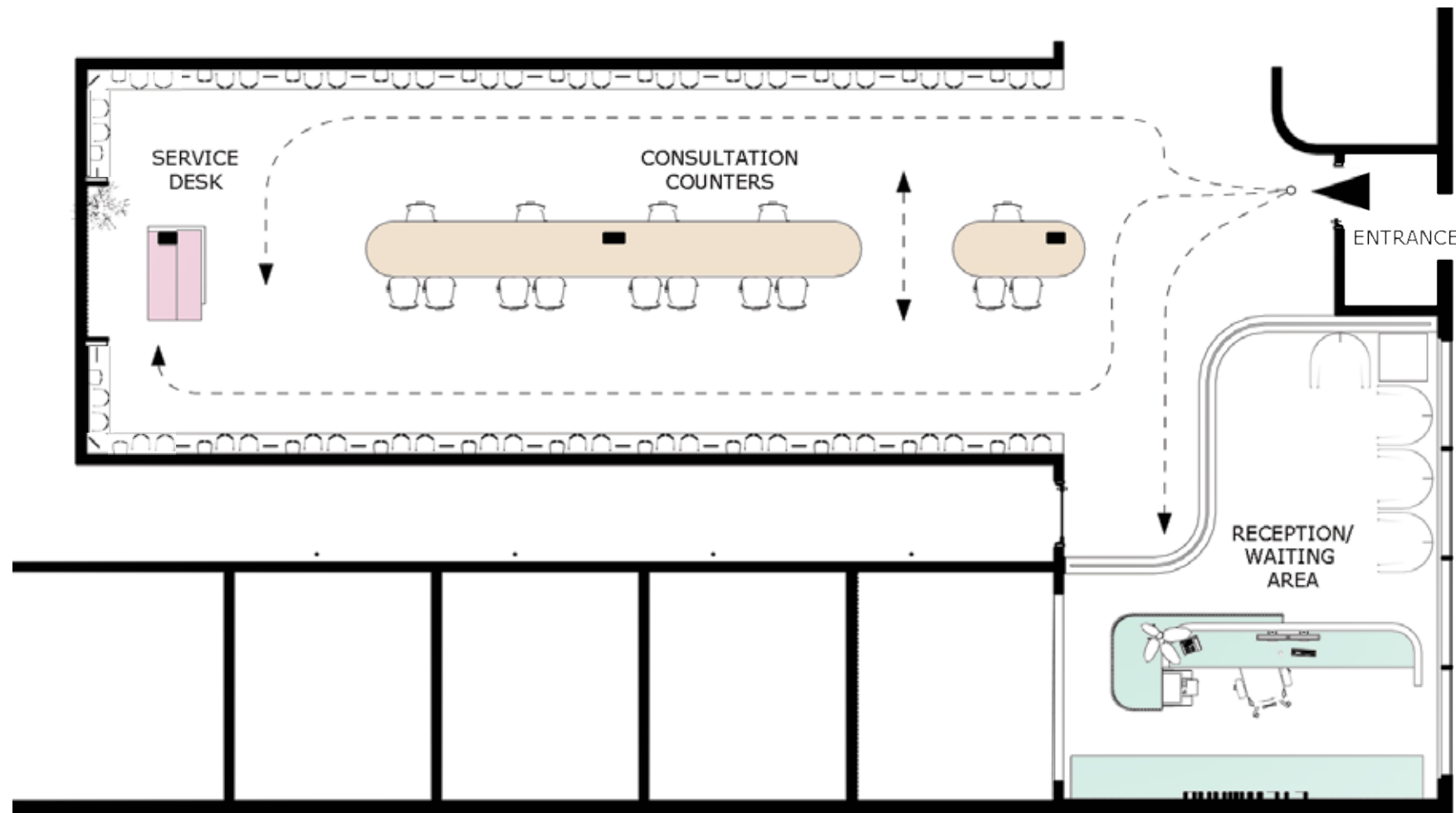
A retail planning and millwork design project developed for an independent optical practice. The design focused on maximizing product display capacity, improving customer circulation, and integrating consultation and service functions within the constraints of an existing tenant space.



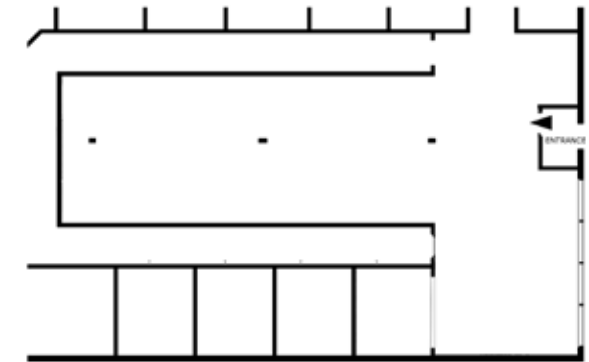
RETAIL PLANNING STRATEGY

The layout organizes the store into clear functional zones while maximizing perimeter display and maintaining an open, welcoming circulation path.

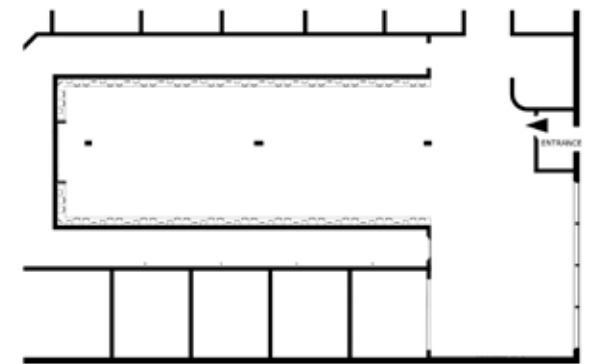
-  Existing columns
-  Customer circulation
-  Display walls
-  Consultation counters
-  Service desk
-  Reception



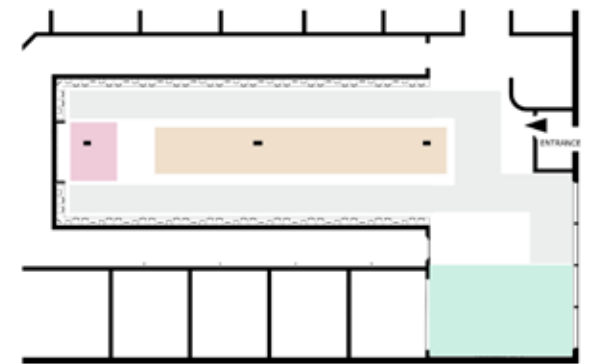
PLANNING DIAGRAMS



Existing Conditions



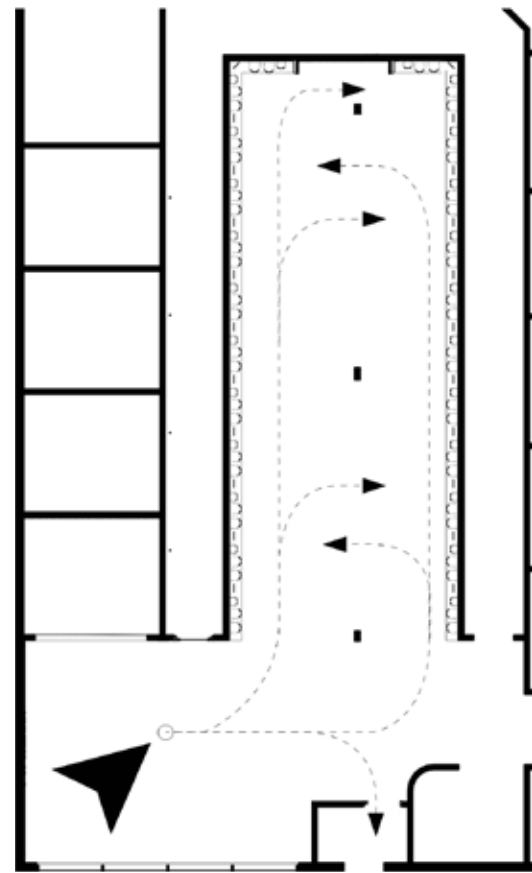
Display Strategy



Circulation Zones

RECEPTION DESIGN

The reception area sets the tone for the customer experience with a warm, minimalistic aesthetic and clear orientation into the store.



MILLWORK SYSTEMS

Custom millwork integrates display, storage, and service functions with a consistent language of wood, black accents and clean lines.



Retail Elevation - Short Wall



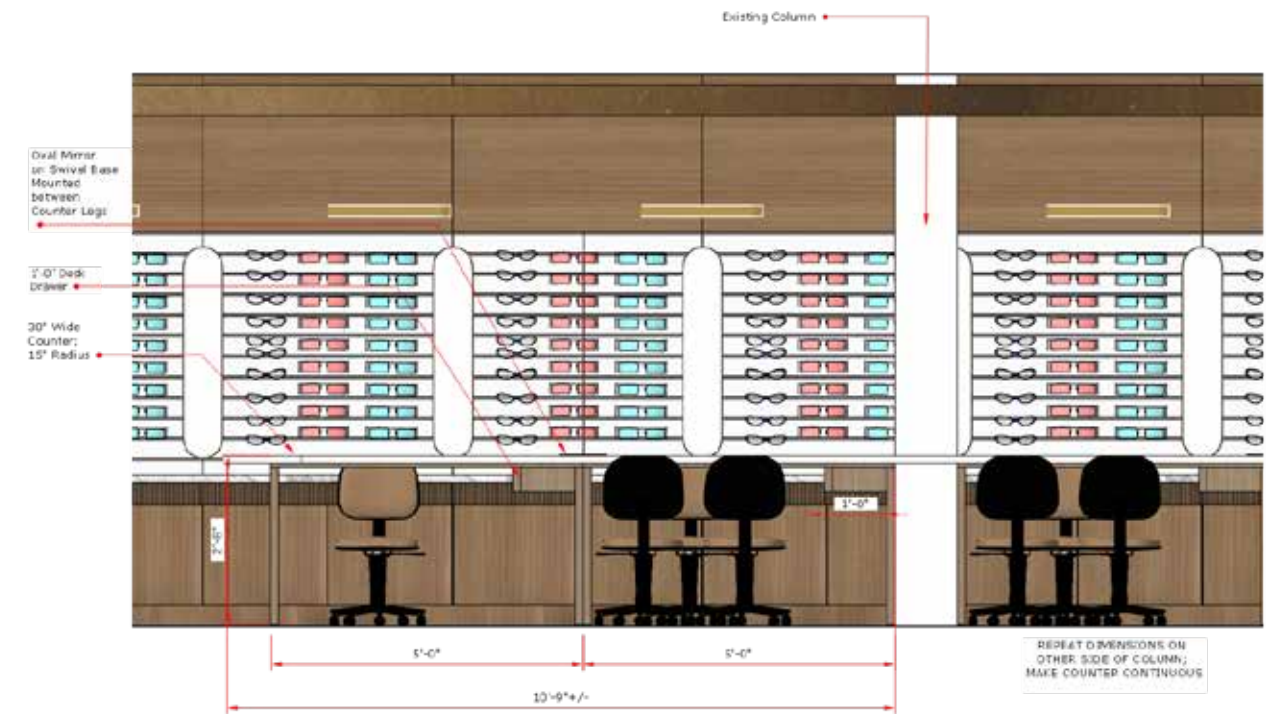
Retail Elevation - Long Wall



Section - Service Desk



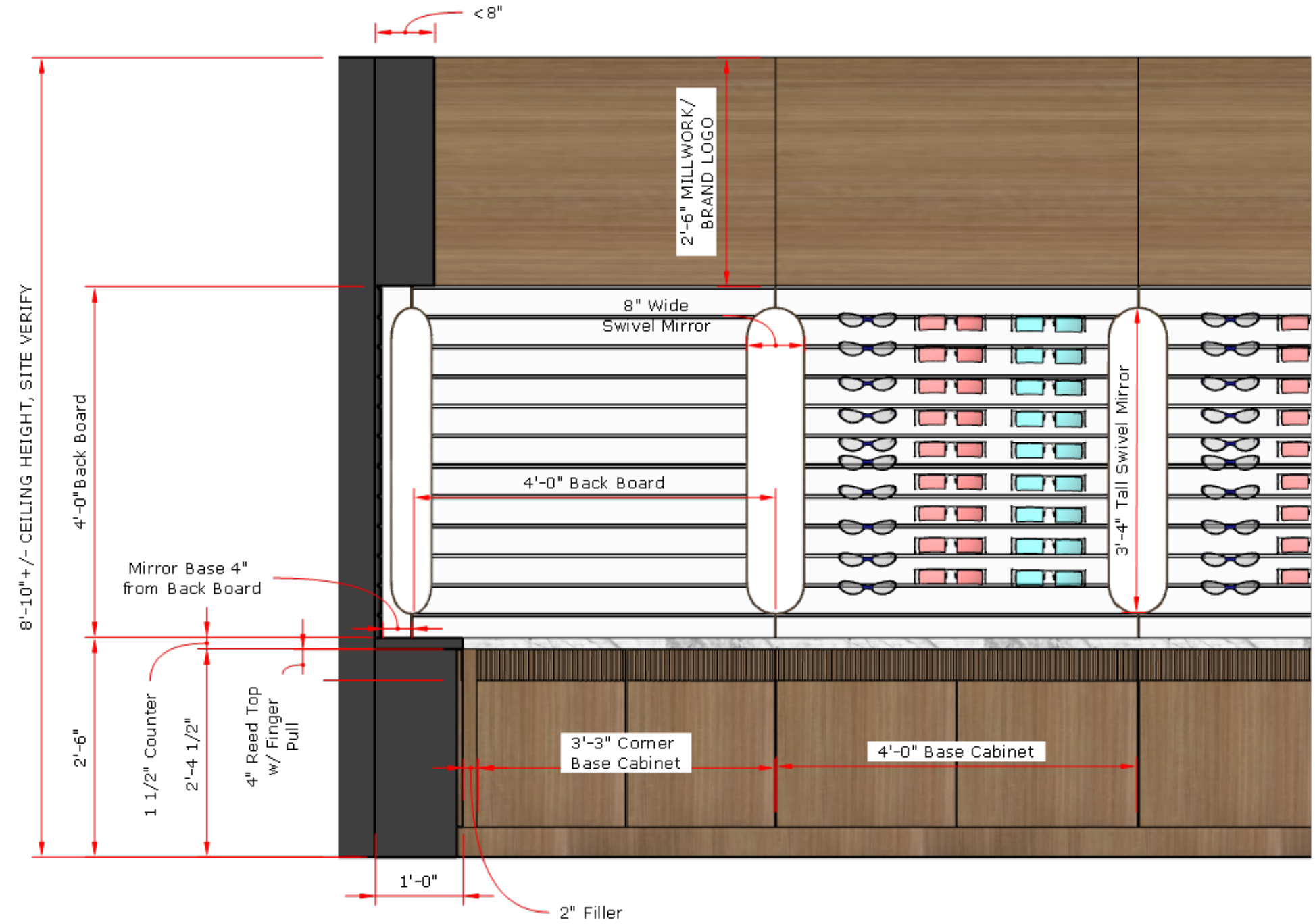
Elevation - Service Desk



Elevation - Service Counter

DETAIL

Millwork was coordinated around standard eyewear vendor dimensions to ensure optimal display capacity and consistency throughout the store.



PROJECT HIGHLIGHTS

- Efficient retail planning within an existing space
- Maximized perimeter display capacity
- Integrated consultation and service functions
- Custom millwork design and detailing
- Cohesive customer experience from entry to service

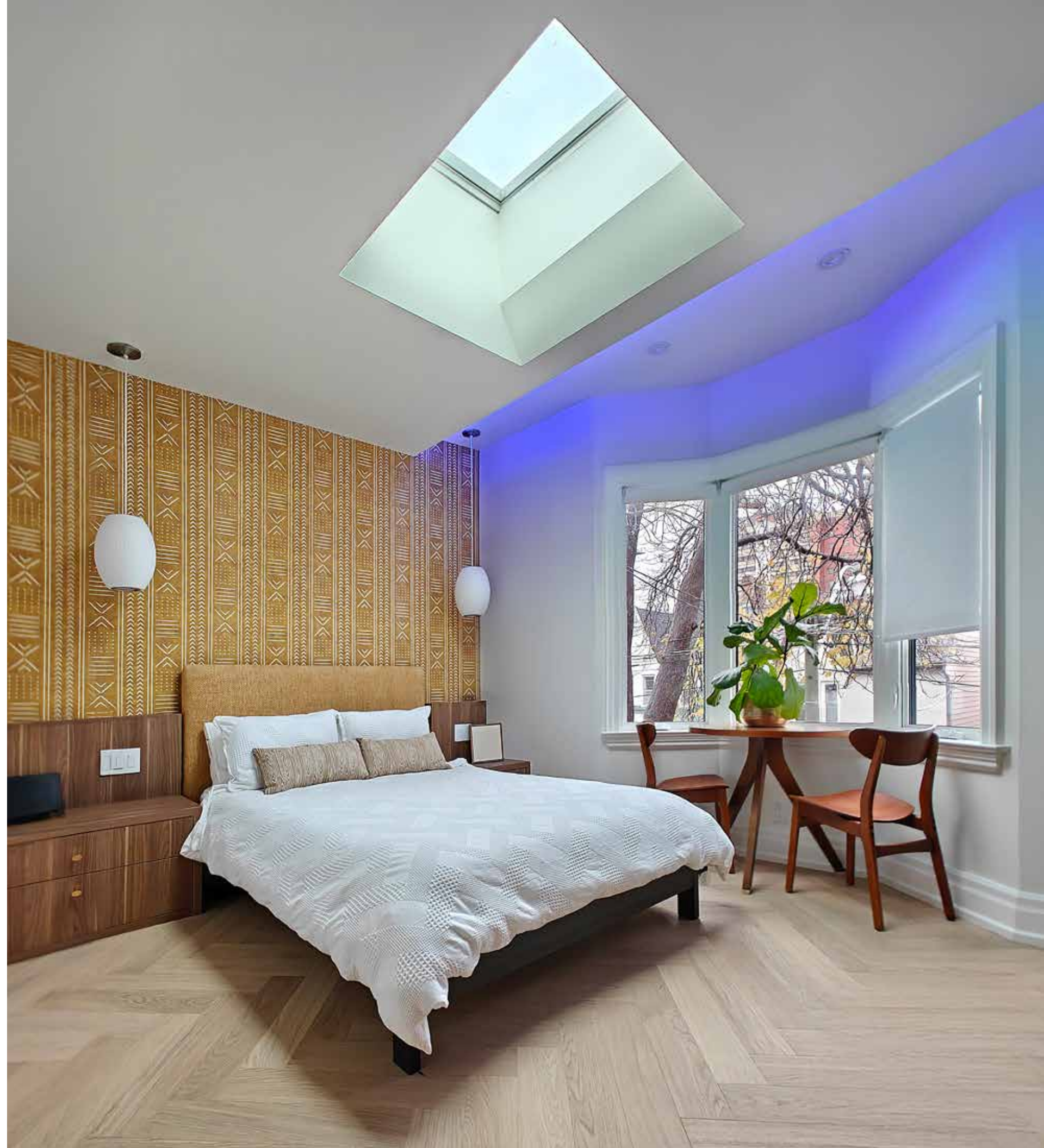


BEDROOM + BATH RENOVATION

Residential

TORONTO, ON
2025

Designed as a private retreat, this bedroom and ensuite renovation transforms underutilized spaces into a cohesive and calming environment. The project balances comfort, functionality, and understated luxury through thoughtful spatial planning and material selection.



CONCEPT

Inspired by the qualities of rest and restoration, the design emphasizes soft textures, natural tones, and a restrained material palette. Layered lighting and custom millwork introduce warmth and depth, creating spaces that support both daily routines and moments of retreat.



MATERIAL PALETTE



White Oak



Teak Wood



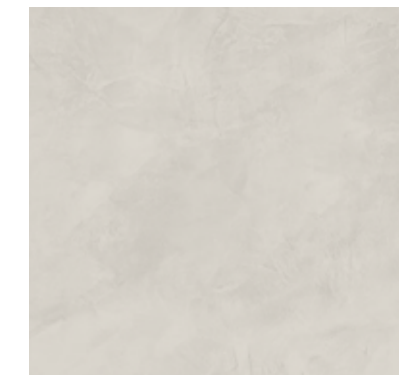
Grasscloth



Cobalt Blue

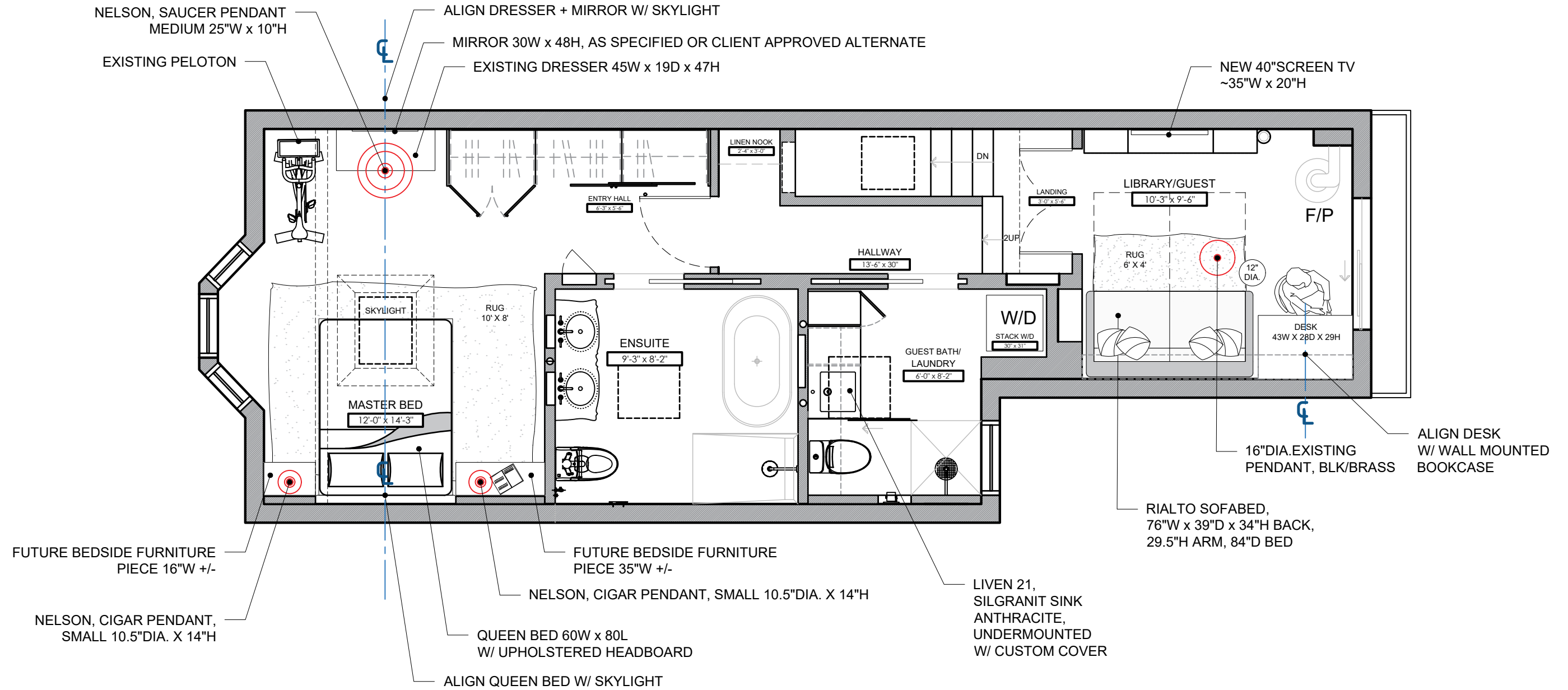


Mixed Marble



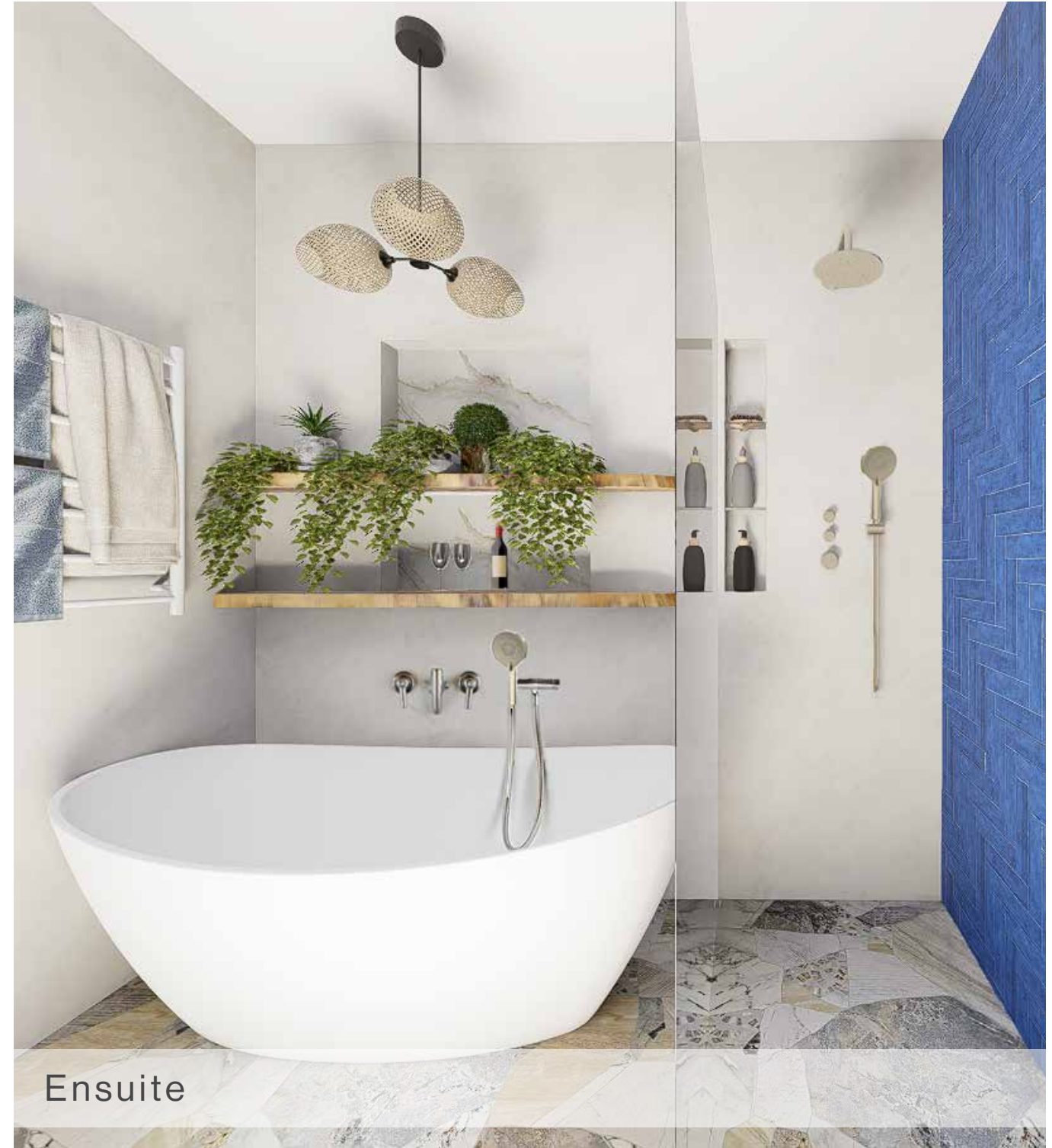
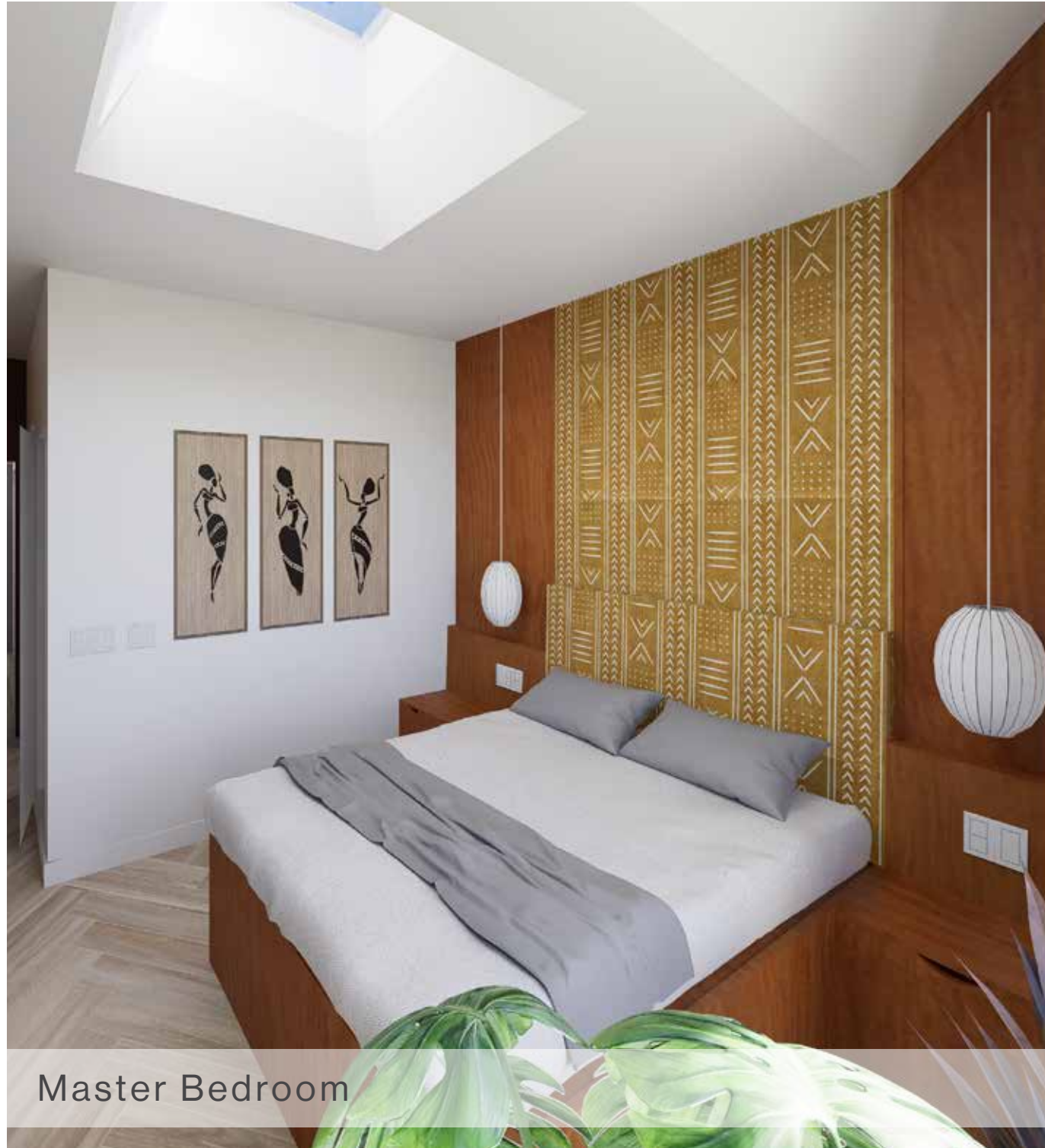
Dekton Albarium

FLOOR PLAN



Furniture, Fixture + Equipment Plan

RENDERED INTERIORS I



RENDERED INTERIORS II



BUILT PHOTOGRAPHY



KITCHEN RENOVATION

Residential

TORONTO, ON
2024

A comprehensive kitchen renovation that reimagines the heart of the home through thoughtful planning, refined detailing, and a balanced material palette. The design prioritizes functionality and flow while creating a warm, contemporary environment tailored to everyday living and entertaining.



DESIGN INTENT

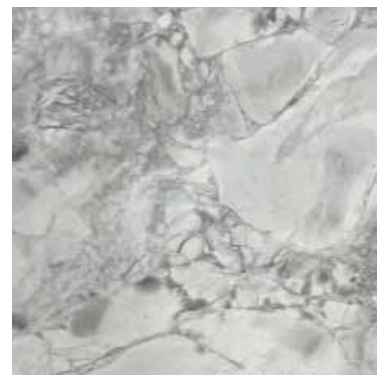
The design explores the relationship between form and function, combining clean architectural lines with natural materials and layered textures. Custom millwork, integrated storage, and visual continuity work together to create a space that feels both purposeful and inviting.



MATERIAL PALETTE



Porcelain Tile



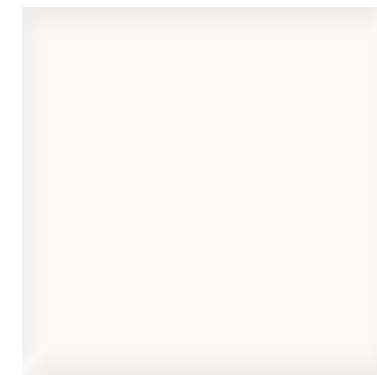
Quartzite



Sinatra Veneer



Maple Veneer

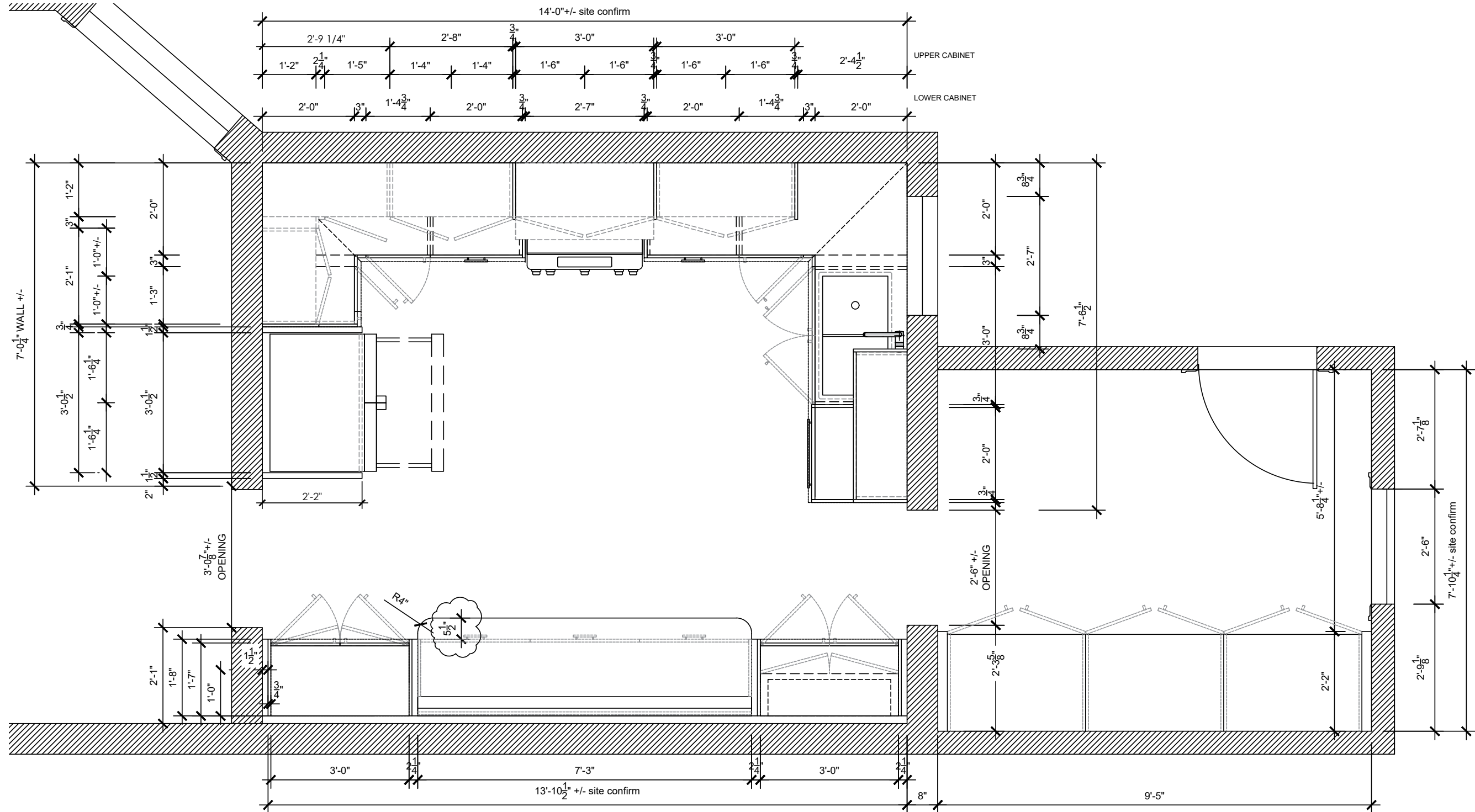


White Acrylic

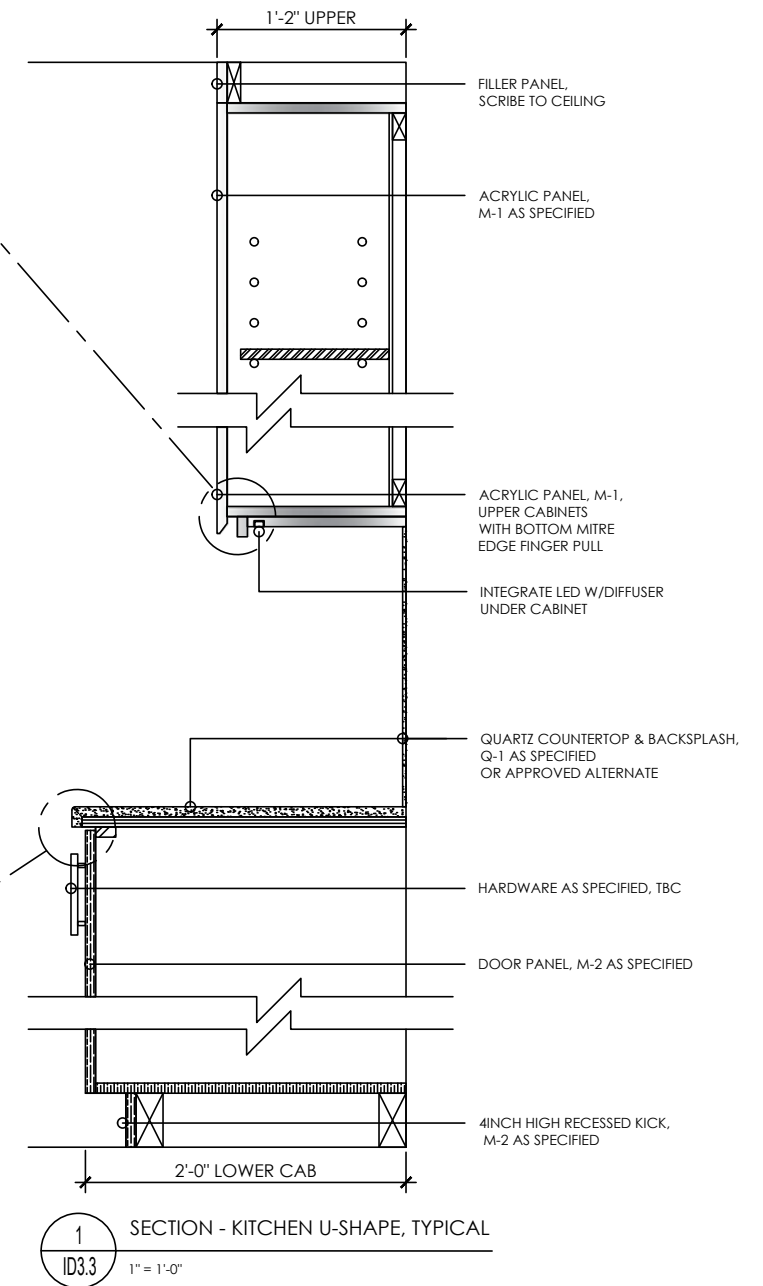
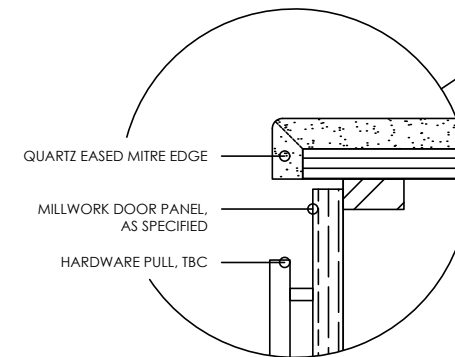
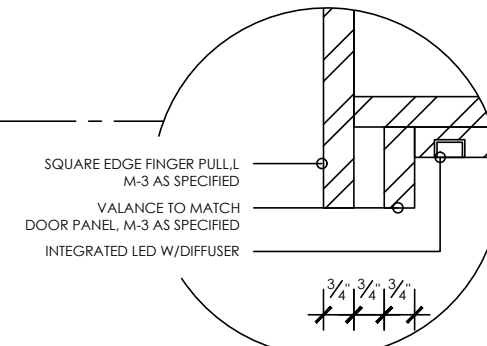
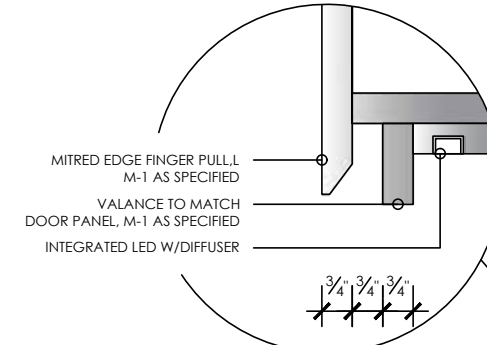
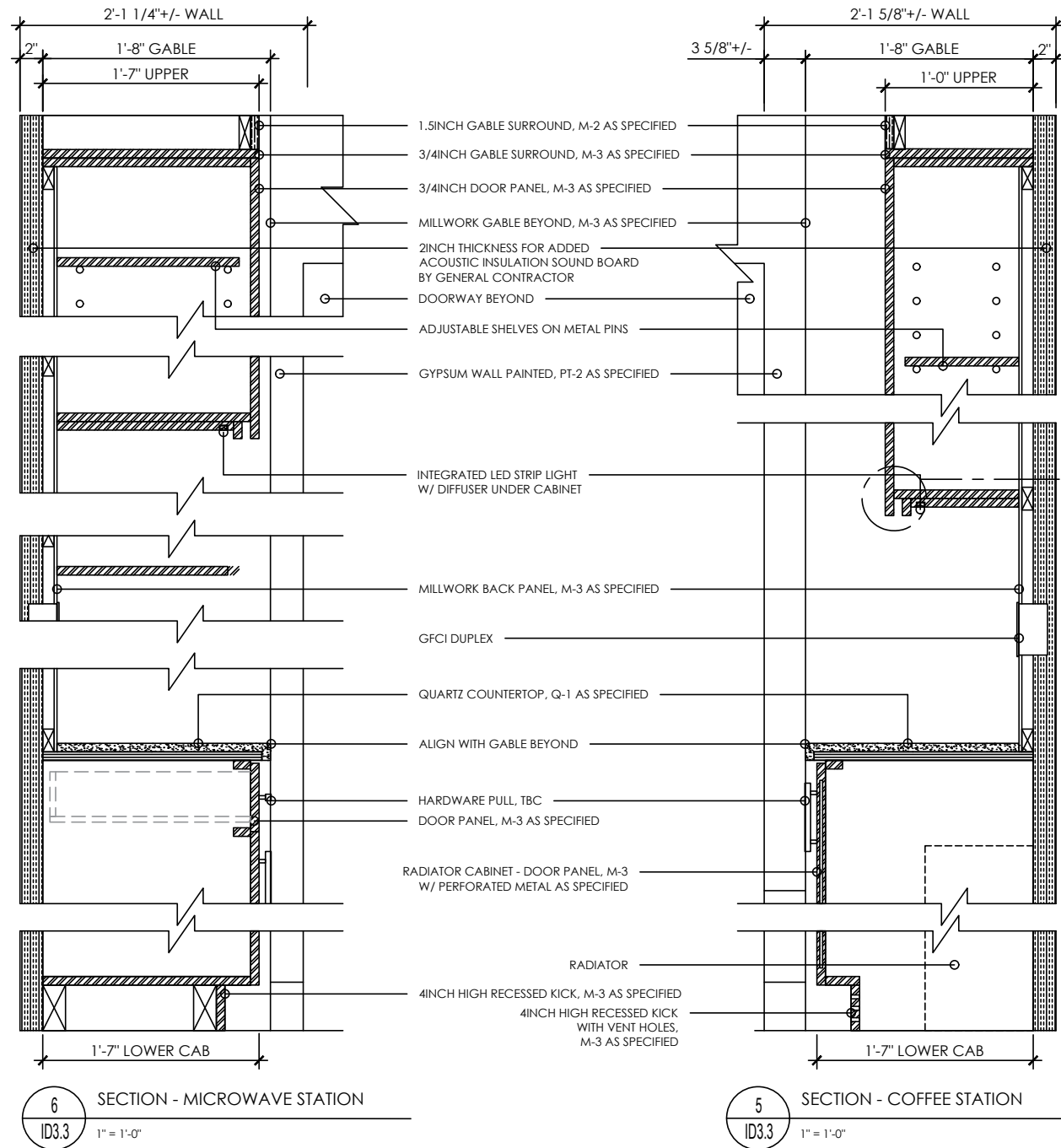


Black Vinyl

PROPOSED PLAN



MILLWORK + DETAILS



BUILT PHOTOGRAPHY



LET'S CONNECT

hello@huongvu.ca

647.782.6675

www.huongvu.ca

[linkedin.com/in/hello-huong-vu/](https://www.linkedin.com/in/hello-huong-vu/)

