



HUONG VU | INTERIOR DESIGN

# PORTFOLIO

PURPOSEFUL, DETAIL-RICH SPACES THAT ARE  
ROOTED IN FUNCTION, GUIDED BY ATMOSPHERE,  
AND CRAFTED WITH CARE.

HELLO@HUONGVU.CA | 647.782.6675 | STRATHROY, ON N7G 2A6 | [WWW.LINKEDIN.COM/IN/HELLO-HUONG-VU](https://www.linkedin.com/in/hello-huong-vu) | [WWW.HUONGVU.CA](http://WWW.HUONGVU.CA)





# ABOUT

THROUGH MY DESIGN AESTHETIC, I AIM TO CREATE PURPOSEFUL, FUNCTIONAL SPACES THAT SEAMLESSLY INTEGRATE WITH AND ELEVATE THE ARCHITECTURE AND INTERIOR SPACE. INSPIRED BY GEOMETRY, NATURAL MATERIALS, AND TEXTURAL CONTRAST, I GRAVITATE TOWARD A BLEND OF SIMPLE AND DYNAMIC PALETTES—ALWAYS WITH A FOCUS ON ACCESSIBLE DESIGN TAILORED TO THE END-USER.

I SEE DESIGN AS A COLLABORATIVE PROCESS WHERE EVERY CONTRIBUTOR PLAYS A VITAL ROLE IN BRINGING A PROJECT TO LIFE. MY ROLE IS TO GUIDE THAT PROCESS—TO HELP NAVIGATE COMPLEXITY AND DELIVER DESIGNBOUND SOLUTIONS.

*Huong Vu*





# CONTENTS

01   Lakeside Property.....	Residential, \$2.5M	(p. 4-7)
02   Kitchen Renovation.....	Residential, \$75K	(p. 8-13)
03   Bedroom + Bathroom Renovation.....	Residential, \$100K	(p. 14-18)
04   Restaurant + Wine Club.....	Hospitality, \$3.5M	(p.19-24)
05   Land Severance + Architectural Drawings.....	Residential, \$4.6M	(p. 25-27)

# 01 | FLEETING

Lakeside Property

**LOCATION** Kingston, Ontario

**PROJECT SIZE** 10,000 SF (\$2.5M)

**TIMELINE** 2-3 months, completed 2024

**SCOPE OF WORK** Exterior Concept - 3D Visualization  
(SketchUp Pro, Twinmotion)

**DESCRIPTION** Tasked with producing realistic 3D visualizations to support finish selections for a custom lakeside home, this project focused on capturing both materiality and atmosphere to assist the client in finalizing their exterior palette.

Working remotely with the client's designer, I translated reference photos, source links, and design direction into accurate colour-matched renderings. Starting from PDF floor plans, elevations, and preliminary sketches, I developed a scaled SketchUp model within 72 hours for design feedback and approval.

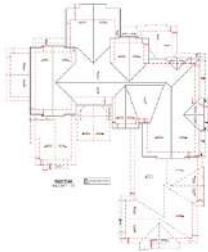
Once finalized, I rendered four elevations in three material schemes—each delivered within 48 hours—to allow for iterative review and refinement. I also proposed a custom window arrangement for the great room, modeled to scale, and provided dimension markups that allowed the fabricator to proceed without full construction drawings.







Twinmotion 3D Visualization from Architectural Drawings





Lighting was carefully adjusted to highlight the true color attributes and material details in each scene. Final renderings were post-edited in Photoshop to incorporate custom features such as the aged stone wash and natural grass texture.







# 02 | DRAMA

## Kitchen Renovation

**LOCATION** Toronto, Ontario

**PROJECT SIZE** 200 SF+ (\$75K)

**TIMELINE** 3-6 months, completed 2024

**SCOPE OF WORK** Interior Concept, Space Planning, FF&E, Construction Drawings + Coordination

**DESCRIPTION** Designed for a couple who prioritized longevity and functionality, this kitchen combines understated utility with graceful, personal touches.

The existing layout offered the option to open the kitchen to the dining area, but after discussing their needs, we chose to retain the dividing wall—allowing for more cabinetry, sound control, and defined zones. A U-shaped configuration was introduced to maximize counter space and create a highly efficient workflow, with each side dedicated to specific tasks.

A built-in banquette anchors the space with warmth and softness, featuring recessed foot space, concealed storage drawers, and vertical channel upholstery to add rhythm and comfort. A relocated radiator was integrated into a lower cabinet, creating a dedicated coffee station. In the home's rear addition, we designed coordinating pantry and mudroom cabinetry to maintain visual continuity and provide generous storage.







The range is centered to anchor the composition, while the sink—slightly offset beneath the window—introduces natural rhythm and openness. Cabinet finishes and proportions were selected for durability, performance, and visual balance. Polished acrylic defines the working zone, while matte white cabinetry at the banquette side softens reflections, creating a cozy, inviting contrast—an intentional interplay of material and light.



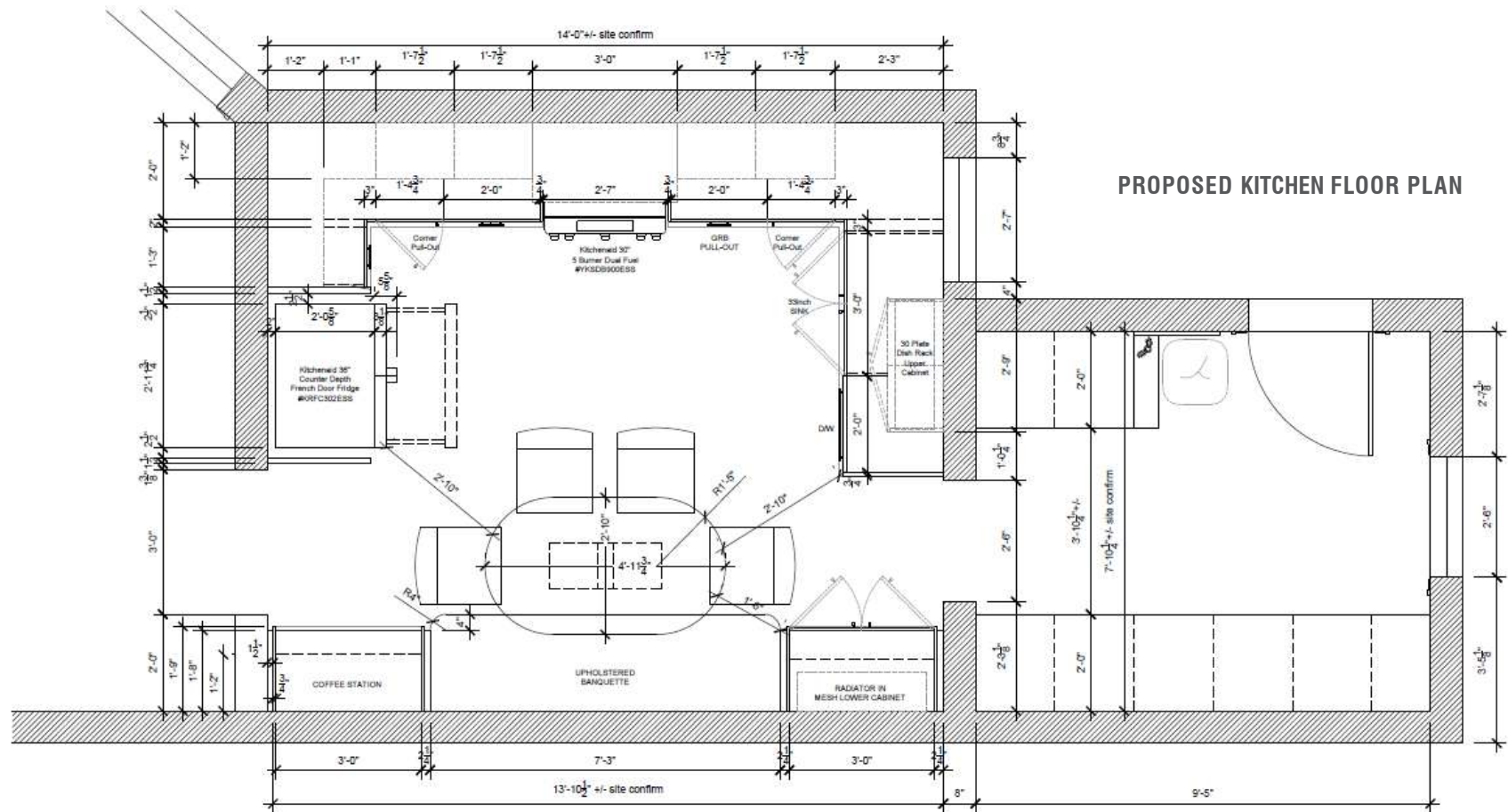
Acrylic & Matte  
White



Dark Wood



Stainless Steel

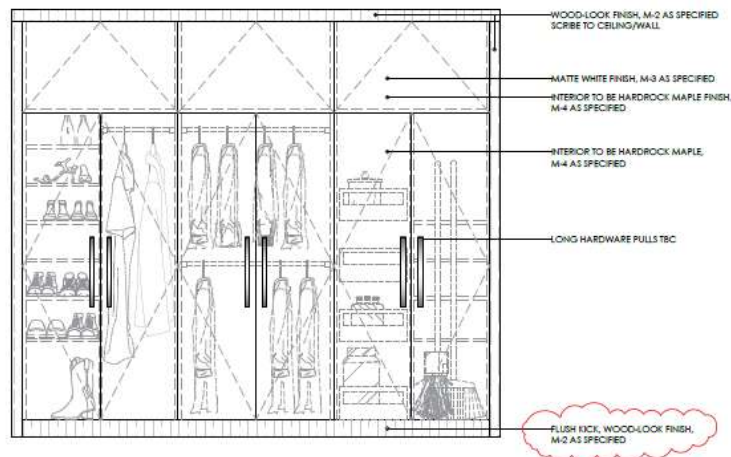








MUDROOM 3D RENDER



MUDROOM ELEVATION

ID	Image	Item	Description	Finish	Size
7	M-2	Millwork Lowers & Gables	FINSA 20N Roble Sinatra Design Line	Natural	
8	M-3	Millwork Banquette Wall & Mudroom Doors	PREMLINE 4303M Bianco Design Line	Super Matte	
9	M-4	Millwork Mudroom Interior	Hardrock Maple Melamine TFL Panel	Dolomite	
10	M-5	Millwork Perforated Metal	Stainless Steel 1/2" Square SSPERF500SQ	304 Stainless Steel, 16Ga	36" x 48" sheet
11	M-6	Millwork Hardware Pulls	Contemporary Stainless Steel Pull 527	Stainless Steel	160mm length and 576mm length
12	U-1	Upholstery Banquette	Challenger Raven CHALL909 Ennis Fabrics	Black Vinyl	86.5" length 4"H finish Seat 2" Thick finish Back
13	FX-1	Fixture Ceiling	TBD		
14	FX-2	Fixture Undermount Sink	Kraus 33" 16-Gauge Undermount Double SS Sink with Accessories Model # KWU112-33	Stainless Steel, 16Ga	33"W x 19"D x 10"H (36inch cab min.)
15	FX-3	Fixture Kitchen Faucet	Delta Trinsic Single- Handle Pull-Down Sprayer with MagnaTite Docking Model # 9159-DST	Chrome	10"W x 14"H
16	EQ-1	Equipment Undercabinet Hood	KitchenAid 36" 585 CFM Motor Class Commercial- Style Under-Cabinet Range Hood System KVUC606KSS	Stainless Steel	36"W x 23"D x 10"H
17	EQ-2	Equipment Range	KitchenAid® 30-Inch 5- Burner Dual Fuel Convection Front Control Range With Baking Drawer YKSD900ESS	Stainless Steel	29-7/8"W x 28- 7/8"D x 36"H
18	EQ-3	Equipment Counter Depth Fridge	KitchenAid 22 Cu.Ft. 36-Inch Width French Door Refrigerator With Interior Dispense KRFC302ESS	Stainless Steel	35-3/4"W x 30-1/4"D x 72"H

FFE SCHEDULE





# 03 | FUSION

## Bedroom + Bathroom Renovation

**LOCATION** Toronto, Ontario

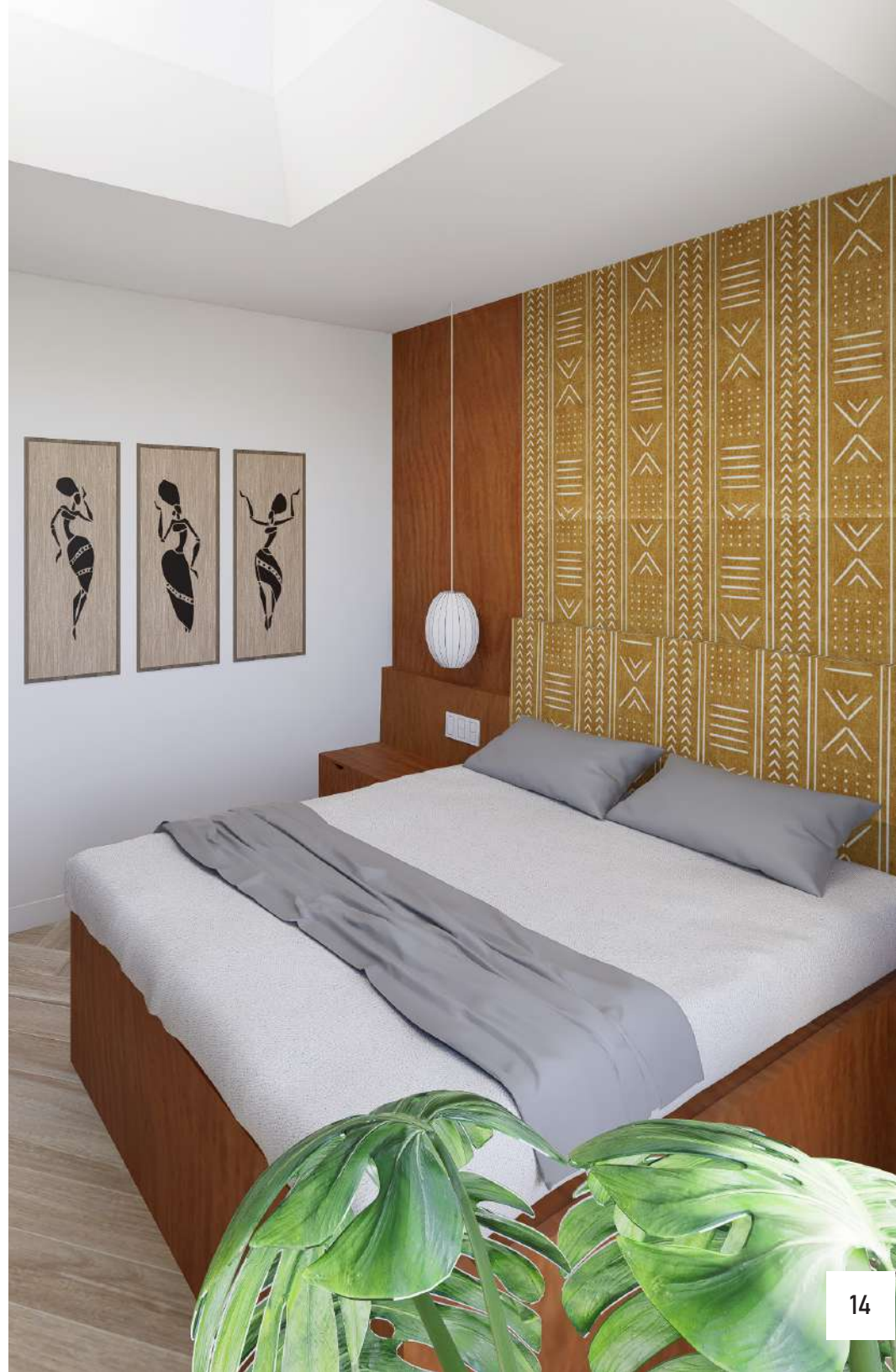
**PROJECT SIZE** 750 SF (\$100K)

**TIMELINE** 3-6 months, completed 2025

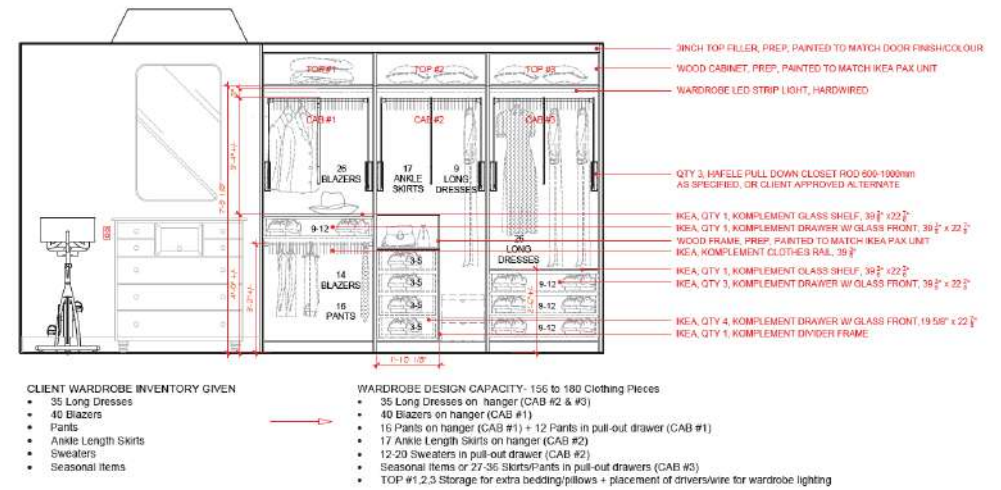
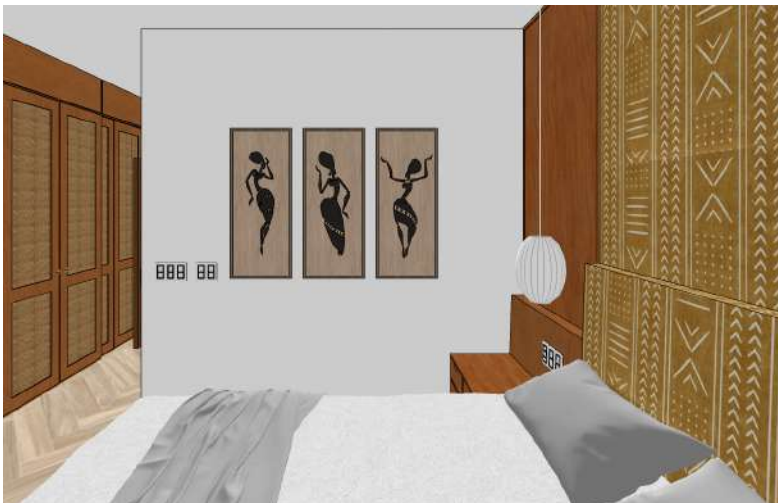
**SCOPE OF WORK** Interior Concept, Space Planning, FF&E, Construction Drawings + Coordination

**DESCRIPTION** What began as a renovation in progress quickly became a collaborative design refinement. The clients—each with distinct preferences (pattern and mustard versus minimal vintage and cobalt)—sought a second opinion on layout and finishes before finalizing construction. With rough-ins already underway, we focused on achievable adjustments that enhanced functionality and expressed both personalities within a modest footprint.

To support aging in place, we redesigned the guest bath/laundry for better accessibility while preserving the master bath layout. Throughout, we balanced comfort and character: salvaging vintage solid wood doors, choosing swing doors for privacy in bedrooms, and pocket doors where space-saving was key. Antique cabinetry was restored and coordinated with accent wallpaper, creating visual continuity and charm.

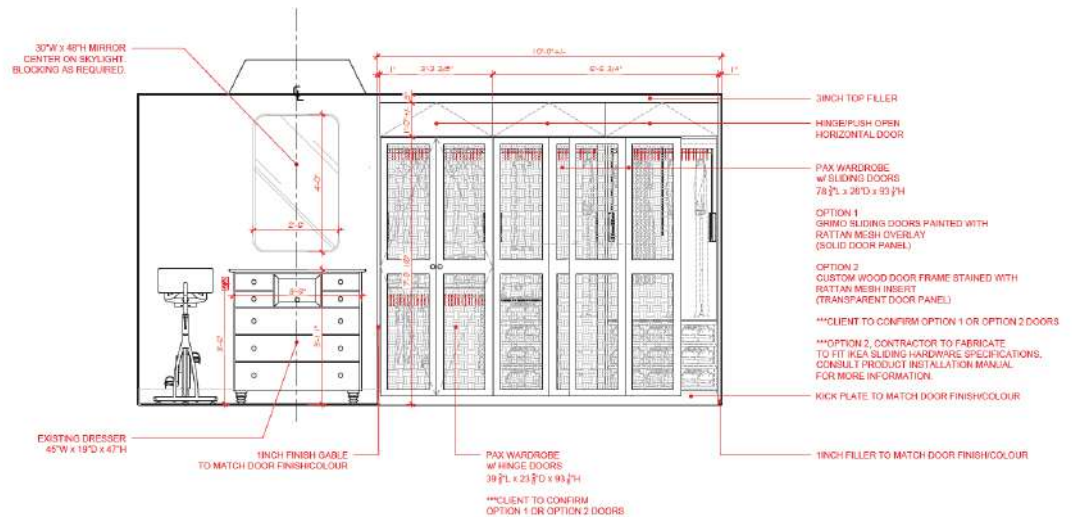






## MASTER WARDROBE ELEVATIONS

A calm retreat in tone and texture, the primary bedroom embraces a soft, earthy palette. A mustard African print sets the tone.

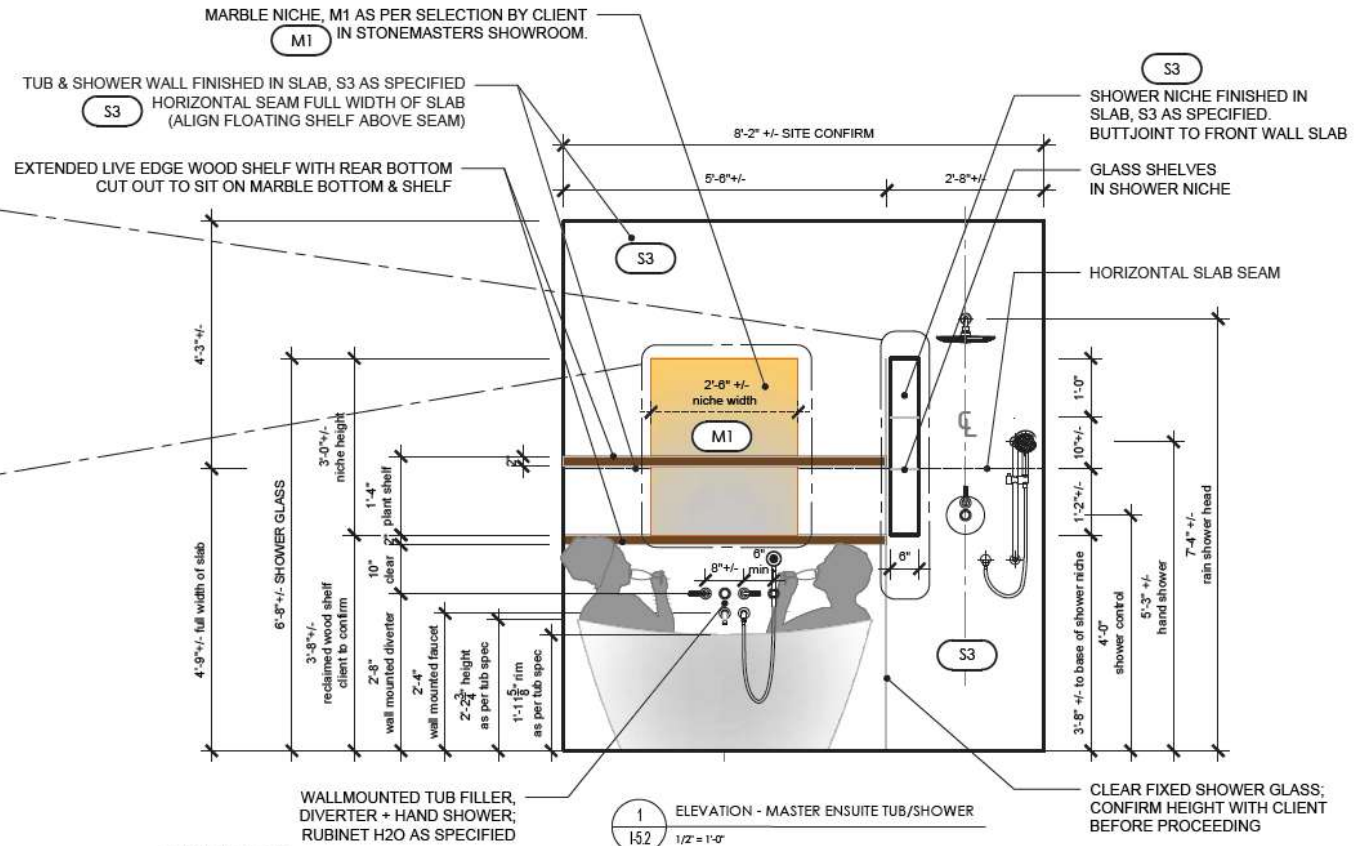
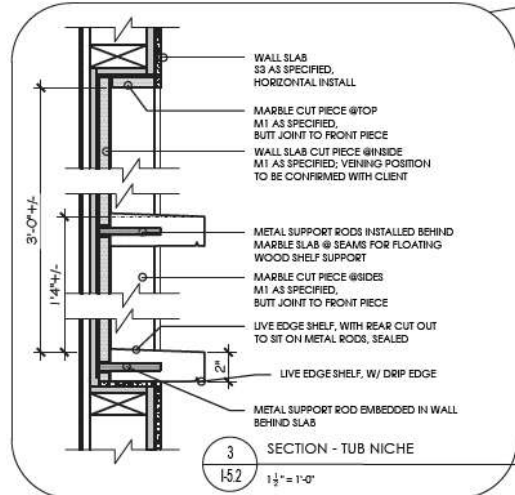
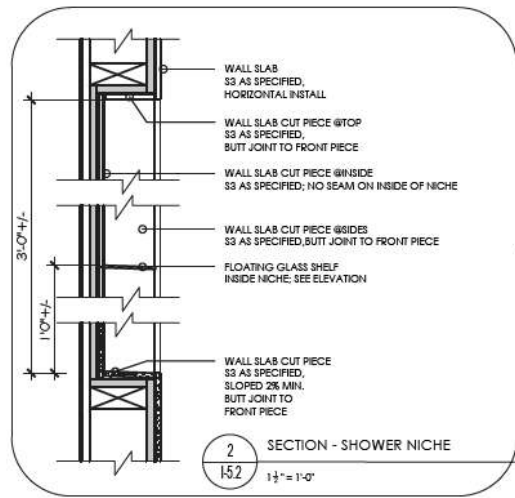




In the ensuite, a cobalt blue herringbone tile—rotated 90 degrees—anchors the space as a striking feature wall, balanced by limewashed walls and a warm stone base. Beneath a skylight, a freestanding tub invites quiet moments of rest—paired with floating wood shelves that host a curated collection of vines. Opposite, a repurposed antique dresser, carefully refinished and sealed, serves as a custom vanity. Underfoot, soft-toned tile reminiscent of Italian cobblestone adds gentle texture and a sense of nostalgic charm.







#### GENERAL NOTES

1. ALL SITE DIMENSIONS AND ACTUAL EXISTING CONDITIONS TO BE VERIFIED BY GENERAL CONTRACTOR, TRADE AND SUPPLIERS BEFORE STARTING WORK.
2. ALL EQUIPMENT INSTALLATION AS PER MANUFACTURERS' RECOMMENDATIONS AND INSTRUCTIONS.
3. CONTRACTOR TO MAKE GOOD OF ALL SURFACES, INCLUDING MINOR IMPERFECTIONS PRIOR TO RECEIVING MATERIAL INSTALLATION OR PAINT.
4. ALL CONSTRUCTION WORKMANSHIP AND METHODS TO ADHERE TO CURRENT BUILDING CODES, REQUIREMENTS OF AUTHORITIES AND LOCAL BY-LAWS.





In the multifunctional guest room, three vintage bookcases were cut and reimagined to create a cozy office nook and a custom TV wall unit, paired with a modern sofa bed. A round, standalone fireplace anchors the space—bringing warmth and intimacy to a room designed for both work and rest. The layout allows for seamless transitions between everyday living and guest accommodation, without compromising on comfort or character.





## 04 | HEIST

Restaurant + Wine Club

**LOCATION** Kingston, Ontario

**PROJECT SIZE** 4,500 SF (\$3.5M)

**TIMELINE** 2 years, completed 2021 (construction 2022)

**SCOPE OF WORK** Exterior + Interior Concept,  
Space Planning, FF&E, Construction Drawings

**DESCRIPTION** A passion project rooted in local farming and elevated hospitality, Heist merges exclusivity with downtown energy inside a historic Kingston building. Designed in collaboration with the client, “the restaurant guys,” and our team, the concept fuses a Wine Club membership with seasonal, locally sourced cuisine.

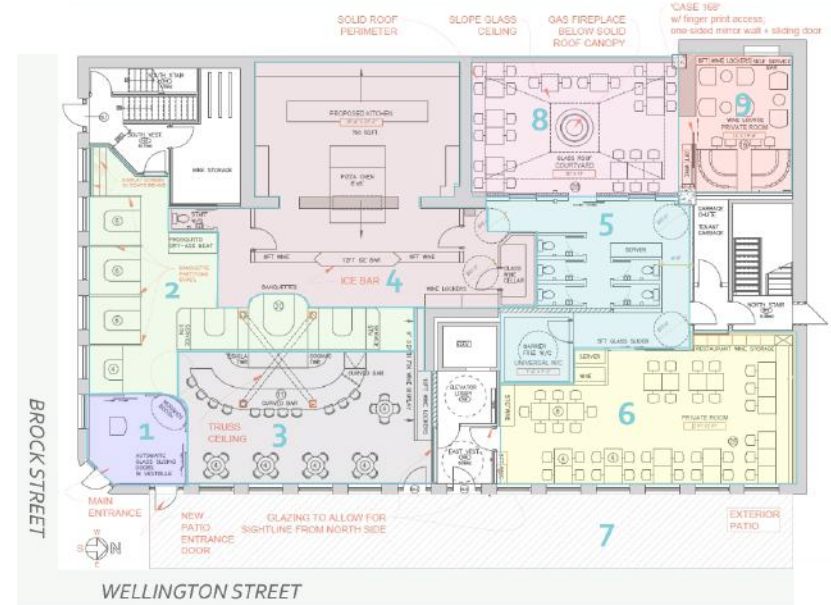
Inspired by the mystique of the Prohibition era, the interior features a sculptural curved bar, individual Art Deco banquettes, and a dramatic journey through an alleyway corridor leading to three hidden rooms: an indoor courtyard, a white dining room, and a fingerprint-access private lounge.

Spanning two years, my role involved working closely with the principal designer and consultants in weekly meetings to develop concepts, program layouts, prepare drawings and renderings, source finishes, coordinate site work, and produce full contract documentation for tender.





MOOD BOARD



- |   |                              |   |                  |
|---|------------------------------|---|------------------|
| 1 | Arrival + Hostess            | 6 | North Dining     |
| 2 | South Dining                 | 7 | Exterior Patio   |
| 3 | Main Bar                     | 8 | Indoor Courtyard |
| 4 | Ice Bar (+ Wine Lockers)     | 9 | Wine Lounge      |
| 5 | Corridor + Private Washrooms |   |                  |





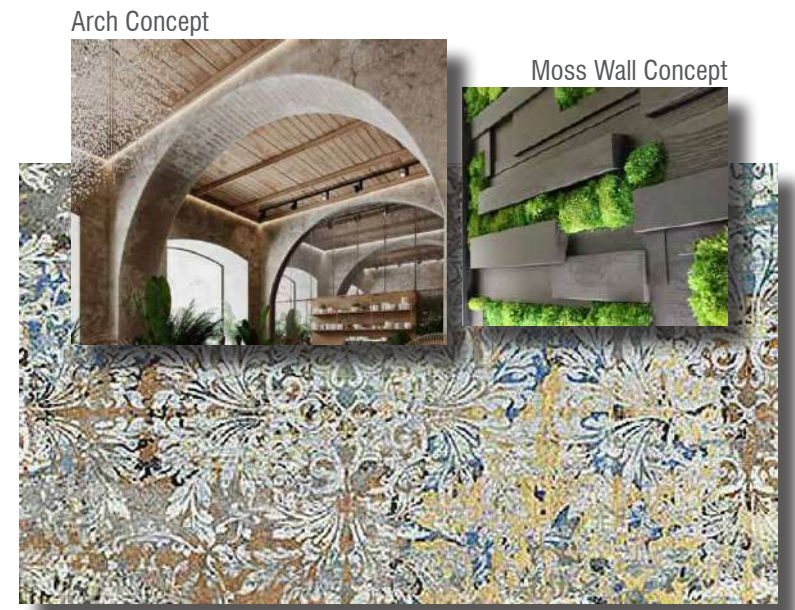
SKETCHUP MODEL



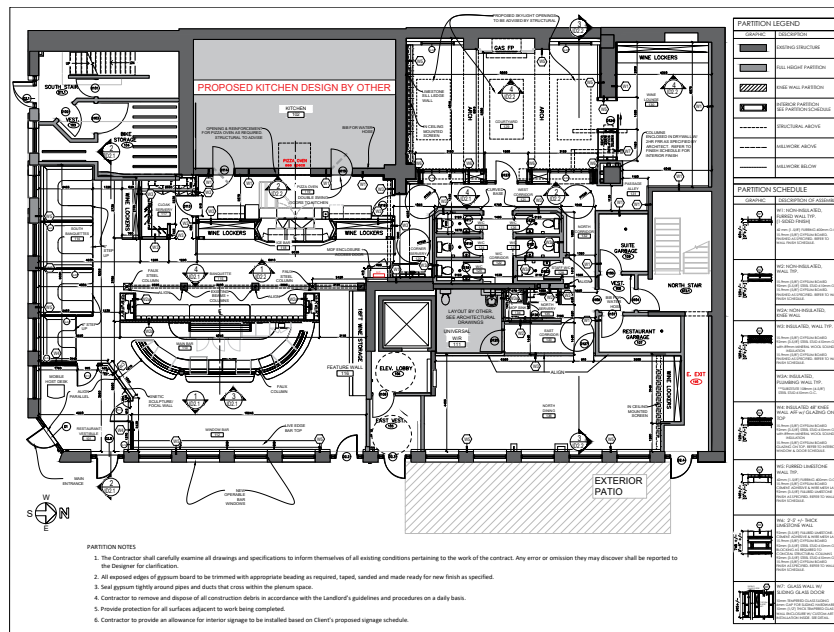
GAS FIREPLACE CONCEPT - SKETCHUP MODEL



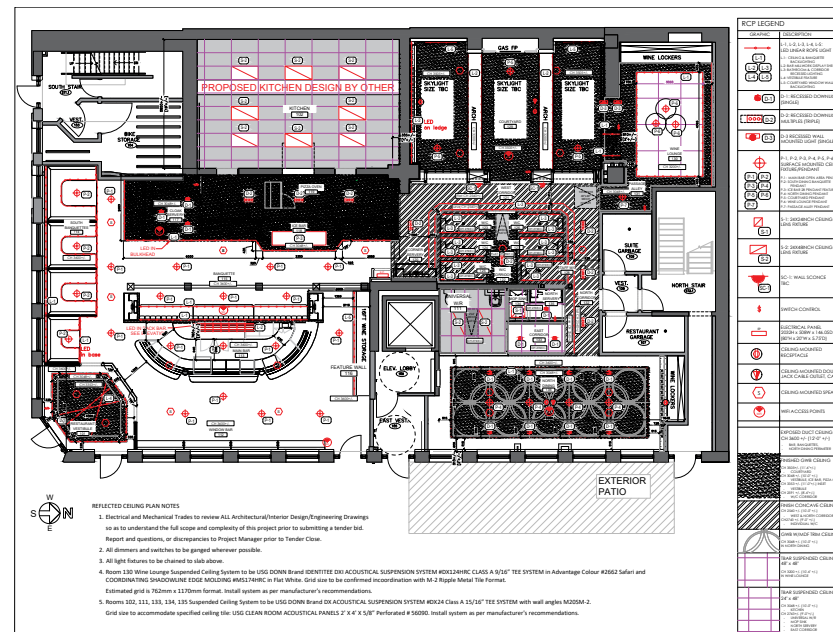
SKETCHUP RENDER



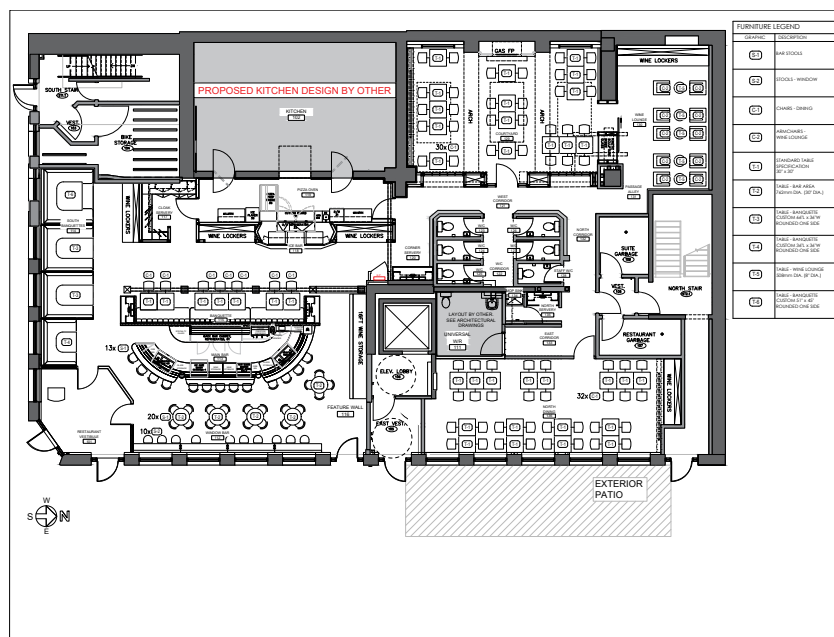
Floor Tile



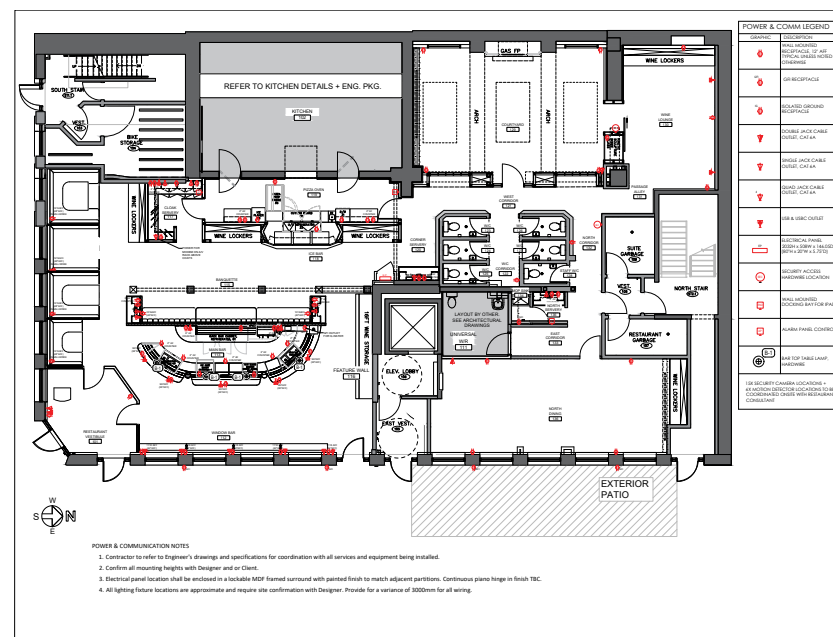
## PARTITION PLAN



## CEILING PLAN

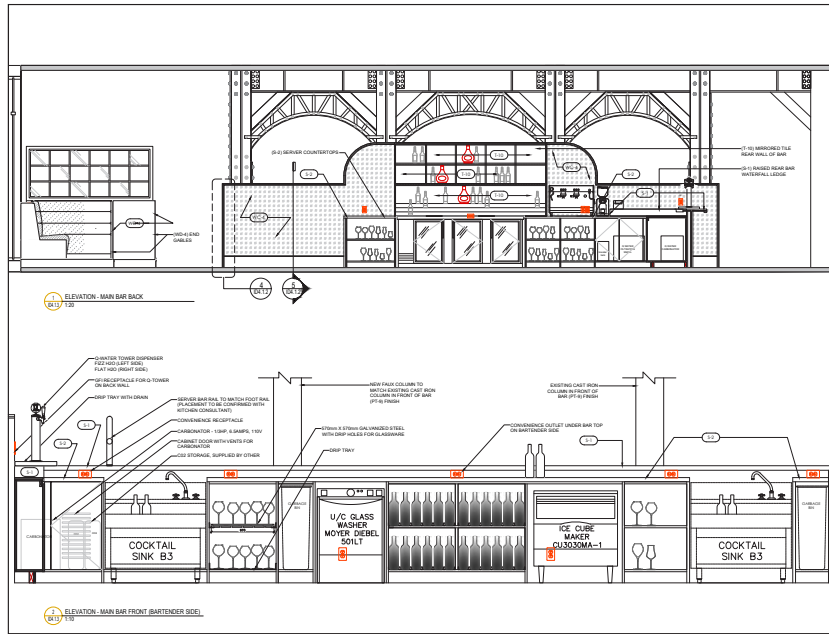


## FURNITURE PLAN



## POWER + COMMUNICATION PLAN

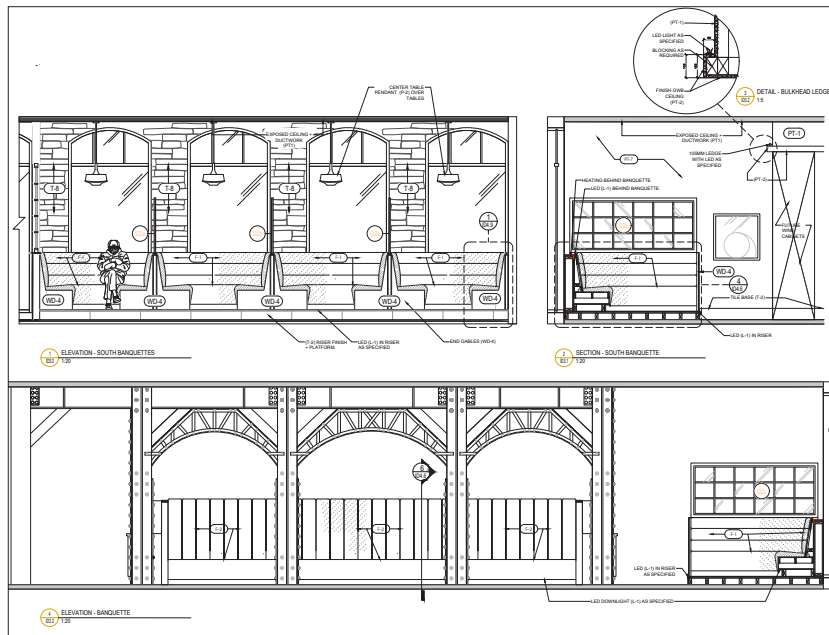




**BAR ELEVATIONS**



**BAR PHOTO**



**BANQUETTE ELEVATIONS**



**BANQUETTE PHOTOS**



FINISH SCHEDULE								
TILE FINISHES								
ID TAG	ITEM	LOCATION	PRODUCT SPECIFICATION	FINISH	SIZE	SUPPLIER	CONTACT	REMARKS
T1	GRAPHIC FLOOR TILE	VESTIBULE 101	INTARSI ELITE 01 RT	NATURAL	8" X 8"	CLOT	RYAN LI [416 739 8000]	REFER TO FLOOR FINISH PLAN ID 1.6. CONFIRM LAYOUT WITH DESIGNER SANDED GROUT, MAPEI SILVER #27
T2	PORCELAIN WOOD-LOOK FLOOR TILE	SOUTH SIDE OF RESTAURANT (BARS & BANQUETTES) 112, 113, 114, 115, 116, 117, 118, 119, 136	AEQUA SERIES CASTOR (BROWN) VEAQ.CAS.0832	MATTE	8" X 32"	OLYMPIA TILE	416 785 9555	REFER TO FLOOR FINISH PLAN ID 1.6. USED AS BASE WHERE NOTED. SANDED GROUT, MAPEI SILVER #27
T3	PORCELAIN FLOOR TILE	KITCHEN 102, PIZZA OVEN 119	REGAL PORCELAIN GREY RECTIFIED NY.RG.GRY.MT.124	MATTE	12"x24"	OLYMPIA TILE	416 785 9555	REFER TO FLOOR FINISH PLAN ID 1.6. USED AS BASE WHERE NOTED. STACKED LAYOUT, SANDED GROUT, MAPEI SILVER #27
T4	PORCELAIN WOOD LOOK TILE	NORTH DINING 136	AEQUA SERIES NIX (WHITE) VEAQ.NIX.0832	MATTE	8"x32"	OLYMPIA TILE	416 785 9555	REFER TO ID 1.6. RM 101 PLANK LAY. RM 136 HERRINGBONE LAYOUT WITH PERIMETER PLANK BORDER T2
T5	PORCELAIN PATTERN TILE	WINE LOUNGE, COURTYARD, RMS 109-131	CARPET. COLOUR: VESTIGE	MATTE	40" x 40"	EURO TILE	416 860 3615	REFER TO ID 1.6. CONFIRM LAYOUT WITH DESIGNER. STACKED LAYOUT. SANDED GROUT. COLOUR TBD.
T6	PORCELAIN FLOOR TILE	W/C 111, 123-128	PIETRA DI STAZZEMA.COLOUR: LIGHT GREY. OE.PS.GRC.1896MT	MATTE	18"x36" TILE STACKED	OLYMPIA TILE		REFER TO ID 1.6. STACKED LAYOUT SANDED GROUT. FLEXITILE SILVER GREY.
T7	PORCELAIN WALL TILE	W/C 111, 123-128	MAT & MORE SERIES.COLOUR: WHITE. FO.MML.WHT.1030.MT.	MATTE	9.85"x29.53"	OLYMPIA TILE		REFER TO ID. 2.30. VERTICAL LAY. GROUT FLEXITILE BONE

## ROOM + FINISH SCHEDULES

ROOM FINISH SCHEDULE											
ROOM #		TYPE	FLOOR FINISH		WALL FINISH				CEILING	CEILING HEIGHTS	REMARKS
NO.	NAME		FLOOR	BASE	N	E	S	W			
101	RESTAURANT VESTIBULE	MAT'L	T2	T2	PT-6	T8	T8	PT-6	DROPPED GWB	REFER TO ID1.4	SEE BASE DETAIL (B-1).
		FINISH	MATTE	MATTE	PEARL	-	-	PEARL	EXP/PT-2		FULL TILE BASE 8" H W/ SCHLUTER JOLLY MGS MATTE BLACK FINISH
102	KITCHEN	MAT'L	T3	T3	WP-1	WP-1	WP-1	N/A	T-BAR		WEST WALL FINISH BY OTHER
		FINISH	MATTE	MATTE	-	-	-	EGG	MATTE		
111	UNIVERSAL W/C	MAT'L	T6	T6	T7	WC-11	T7	T7	T-BAR		T-BAR SPEC SEE RCP/150MM BASE TILE W/SCHLUTER JOLLY EB FINISH BASE CAP
		FINISH	MATTE	MATTE	MATTE	-	MATTE	MATTE	SEE SPEC		
112	WINDOW BAR	MAT'L	T2	T2	PT-7	T8	PT-7	-	EXPOSED		SCHLUTER JOLLY ABGB FINISH BASE CAP
		FINISH	MATTE	MATTE	EGG	-	EGG	-	PT-1		
113	MAIN BAR	MAT'L	T2	-	-	-	-	-	EXPOSED		SEE MILLWORK DETAILS/T2 BASE ON WEST WALL W/SCHLUTER JOLLY ABGB FINISH CAP
		FINISH	MATTE	-	-	-	-	-	PT-1		2 COLUMNS FINISHED PT-9
114	SOUTH BANQUETTES	MAT'L	T2	T2	PT-7	-	T8	PT-7	EXPOSED		SEE RAISED PLATFORM FLOOR EDGE DETAIL AT BANQUETTES
		FINISH	MATTE	MATTE	EGG	-	-	EGG	PT-1		
115	BANQUETTES	MAT'L	T2	T2	PT-7	-	PT-7	PT-7	EXPOSED		
		FINISH	MATTE	MATTE	EGG	-	EGG	EGG	PT-1		
116	WINE FEATURE	MAT'L	T2	WC-3	T-8	PT-3	-	-	EXPOSED		
		FINISH	MATTE	-	-	MATTE	-	-	PT-1		
117	CLOAK/SERVERY	MAT'L	T2	T2	PT-3	PT-3	PT-3	PT-3	GWB		SEE MILLWORK DETAILS/T2 BASE W/SCHLUTER JOLLY ABGB FINISH CAP
		FINISH	MATTE	MATTE	MATTE	MATTE	MATTE	MATTE	PT-2		
118	ICE BAR	MAT'L	T3	T-3	PT-7	-	PT-7	PT-7	EXPOSED		SEE MILLWORK DETAILS/T2 BASE W/SCHLUTER JOLLY ABGB FINISH CAP
		FINISH	MATTE	MATTE	EGG	-	EGG	EGG	PT-1		
119	PIZZA OVEN	MAT'L	T3	T-3	PT-7	PT-7	PT-7	T-9	GWB		SEE ELEVATIONS & MILLWORK DETAILS/T3 BASE W/SCHLUTER JOLLY ABGB FINISH CAP
		FINISH	MATTE	MATTE	EGG	EGG	EGG	GLOSSY	PT-2		



# 05 | INVESTMENT

Land Severance + Architectural Drawings

**LOCATION** Pickering, Ontario

**PROJECT SIZE** 5,000 SF (\$2.3M)

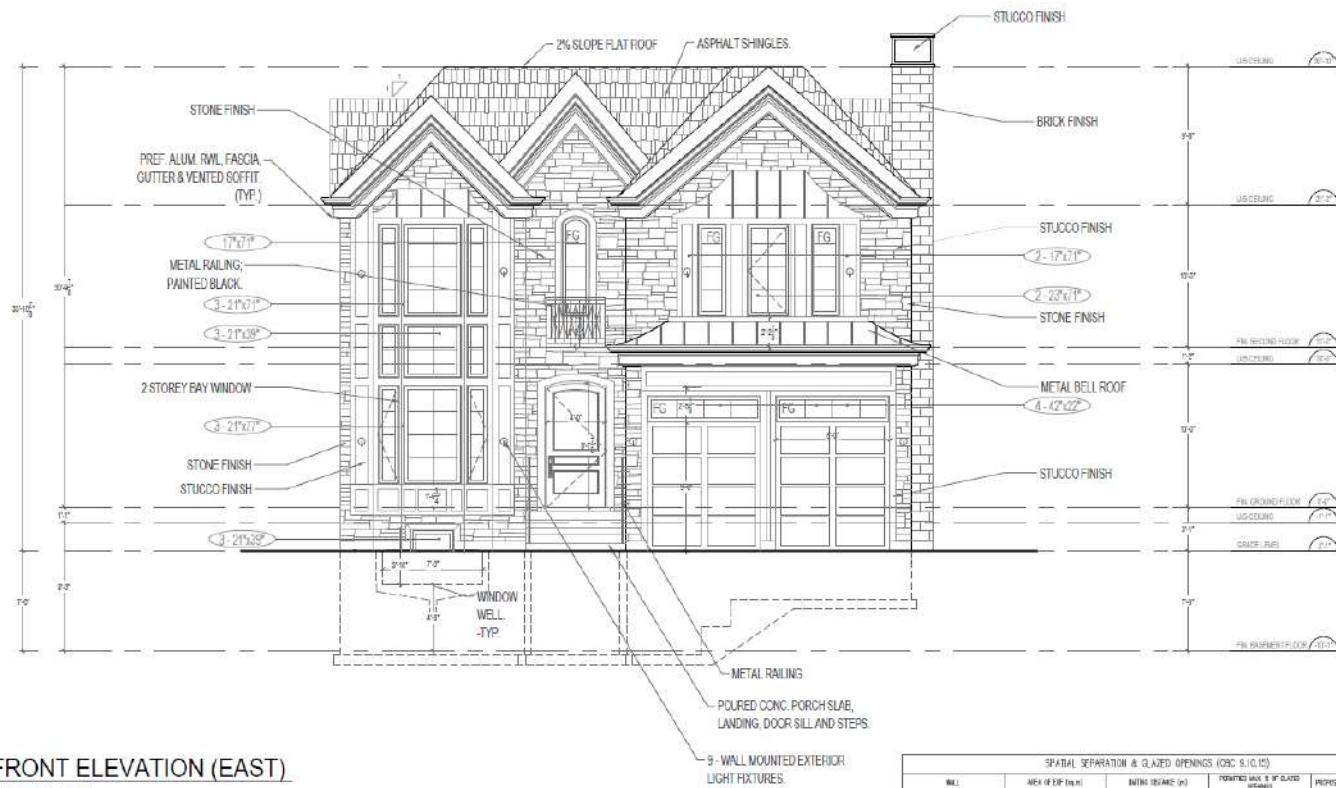
**TIMELINE** 6 months, completed 2018 (construction 2020)

**SCOPE OF WORK** Land Severance, Exterior + Interior Space Planning, Architectural Drawings, Permit Coordination

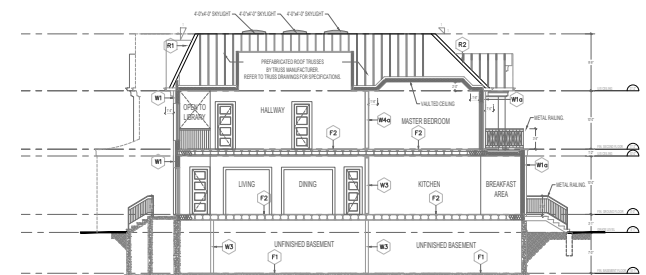
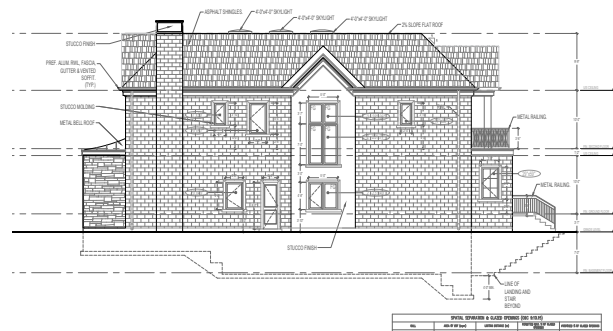
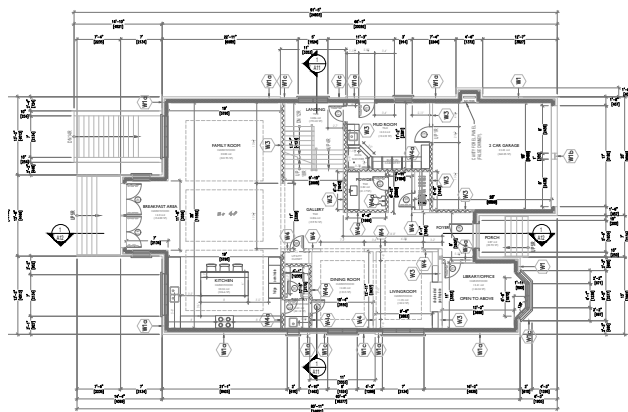
**DESCRIPTION** For a property investor seeking to maximize a 100-ft-wide lot, I led the design and coordination of a land severance to accommodate two new single-family homes. Collaborating with a designer/real estate agent familiar with local market needs, I developed concept plans under a 2,500 sq. ft. footprint—each featuring 4 bedrooms with ensuites, mudroom, a tandem garage, office, open kitchen, and unfinished basement.

In addition to design, I managed the demolition and legal coordination for severance approvals, including inspections and documentation. To support project viability, I prepared a construction cost estimate by sourcing vendor and trade quotes, incorporating a 15% contingency for client review. Once approved, I developed full architectural plans and coordinated with structural and HVAC consultants to move the project forward with permit submission.





SPATIAL SEPARATION & GLAZED OPENINGS (CRC 5.10.10)				
WALL	AREA OF EX. (sq. ft.)	EXISTING DEGREE (%)	PROPOSED MAX. 5' GLAZED OPENING	PROPOSED 5' GLAZED OPENING
CUR. (PREF. CHALK)	0	0	0	0









INTERIOR DESIGN

HUONG VU

LET'S CREATE SOMETHING BEAUTIFUL TOGETHER...

HELLO@HUONGVU.CA | 647.782.6675  
STRATHROY, ON N7G 2A6  
[WWW.LINKEDIN.COM/IN/HELLO-HUONG-VU](http://WWW.LINKEDIN.COM/IN/HELLO-HUONG-VU)  
[WWW.HUONGVU.CA](http://WWW.HUONGVU.CA)

THANK YOU FOR REVIEWING!!!

