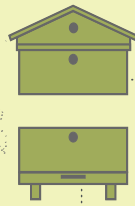


MARCH

APRIL

MAY

**SET UP NEW HIVES & INSTALL BEE PACKAGES**



**MAKE SPLITS TO PREVENT SWARMING**

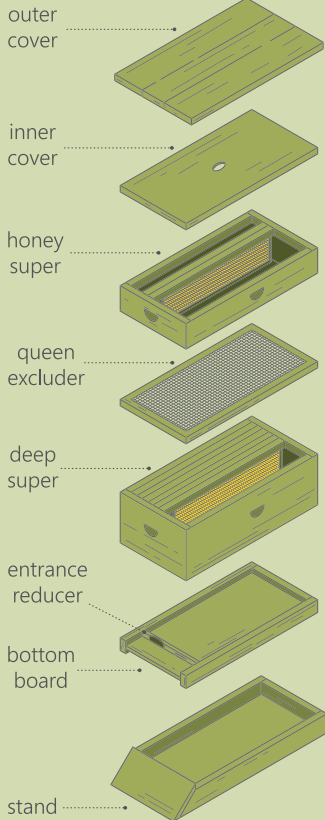
**LIFE CYCLE OF A HONEY BEE**

FEBRUARY

JUNE



**PARTS OF A LANGSTROTH HIVE**



# BEEKEEPING

a year in western pennsylvania

**JANUARY**

Order bees and queens  
Investigate new apiary sites  
Emergency feeding weak hives

**JULY**

Treat for mites if needed  
Harvest honey  
Check water sources

**FEBRUARY**

Assemble new supers and frames  
Clean and repair old supers  
Continue feeding as needed

**AUGUST**

Add supers for Fall nectar flow  
Remove honey supers on weak hives  
Feed hives syrup if needed

**MARCH**

Unite weak or queenless colonies  
Clean out bottoms boards  
Set up new hives

**SEPTEMBER**

Re-Queen any queenless colonies  
Harvest honey  
Feed hives syrup if needed

**APRIL**

Monitor hive populations  
Install new bee packages & nucs  
Cull out old or bad brood comb

**OCTOBER**

Install mouse guards by October 1  
Combine weak colonies  
Set aside supers needing repairs

**MAY**

Add honey supers by May 1  
Make divisions (splits)  
Manipulate hives, prevent swarming

**NOVEMBER**

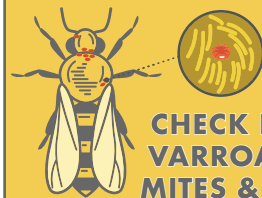
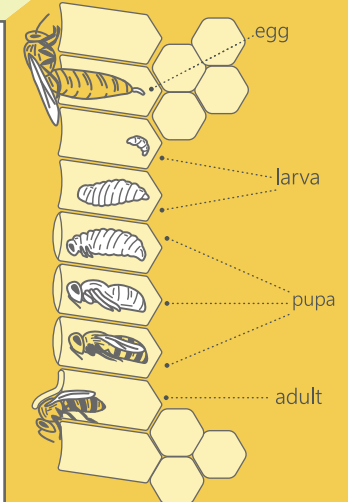
Prepare for winter  
Provide top ventilation to the hives  
Provide a wind break if needed

**JUNE**

Manipulate hives, prevent swarming  
Make divisions (splits)  
Check for brood diseases

**DECEMBER**

Take equipment inventory  
Order new equipment  
Make repairs on equipment  
Read beekeeping literature!



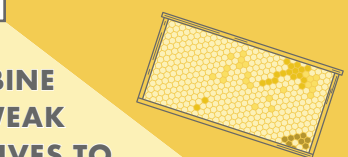
**CHECK FOR VARROA MITES & OTHER PESTS**



**PROVIDE FRESH WATER SOURCES**



**ADD HONEY SUPERS FOR FALL**

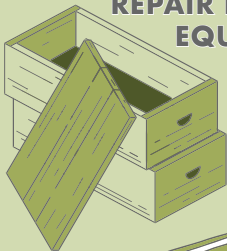


JULY

AUGUST

JANUARY

**TAKE INVENTORY REPAIR BROKEN EQUIPMENT**



**CATCH UP ON BEEKEEPING LITERATURE**

**WRAP HIVES FOR WINTER & PROTECT FROM WIND**



**COMBINE WEAK HIVES TO PREPARE FOR WINTER**

## Country Barn Farm

**CONTACT**  
joe@countrybarnfarm.com  
(412) 225-0930

online beekeeping classes available at [countrybarnfarm.com](http://countrybarnfarm.com)

NOVEMBER

OCTOBER

SEPTEMBER

DECEMBER