

WE'RE HIRING!

SUPPORT+ NEW GRADUATE PROGRAM

Confidence + Competence

We set you up for success with a staggered approach to KPIs.

- Month 1 KPIs - 10 hours weekly
- Month 2 KPIs - 14 hours weekly
- Month 3 KPIs - 18 hours weekly
- Month 4 KPIs - 22 hours weekly
- Month 5 KPIs - 25 hours weekly

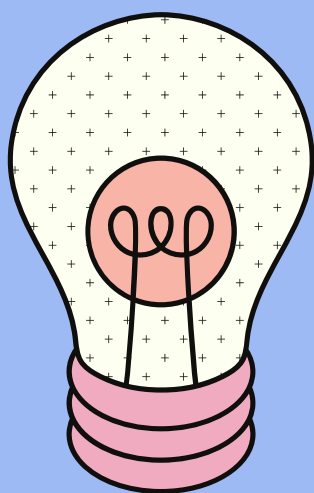


Regular Supervision + PD access

Access to daily mentoring and weekly supervision.
Generous Professional Development Allowance.
Access to our comprehensive resource library and subscriptions.

Hybrid Working Conditions

- Base yourself at our modern Vermont office or work from home.
- Our office is a dog-friendly space, you can bring your furry friend with you.
- As a mobile therapy provider, enjoy providing therapy in a range of environments.



Diverse Caseload

Make a difference in the lives of clients with a disability and those residing in aged care facilities. Enjoy working accross the following areas:

- Dysphagia
- AAC
- Aphasia
- Language & Literacy
- Social Skills

Salary & Allowances

- Phone, Laptop + iPad provided
- Fuel allowance included
- Generous PD allowance

Full time annual salary: \$79,040 + super



We're currently accepting applications. Email your cover letter and CV to support@engagespeechtherapy.org