

OSWEGOLAND FISHIN' FOOLS



TIGHT LINES

March/April 2020

The Oswegoland Fishin' Fools is a multi-species fishing club. We meet the 1st Monday of each month at 7 PM in the Allied First Bank Building, 3201 Orchard Road, Oswego.

Visit us on the Web at: <http://www.fishinfools.org>

President's Ponderings



Hello fellow Fishing Fools. It is just about that time of year to start our fishing trips. First thing I want to say is be safe out there when on and off the water. We have many great trips to go on this year. If you would like to fish a certain event coming up, make sure you contact another member in the club

to fish with. Remember, it is your responsibility to find a fishing partner. We have sign up sheets at our meetings or it just takes a few phone calls and you will be able to find somebody to fish with. Also, if you are a non-boater, remember that there are numerous expenses associated with owning a boat, so make sure you help your partner out and share the gas, oil, and launch fee's with your partner. Hope to see everybody on the water..



JANUARY

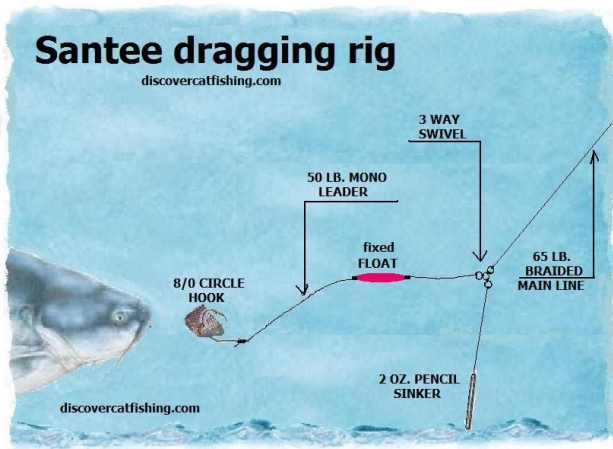
FISH OF THE MONTH

TOM CEBULA



Caught on January 14th 2020 on a local pond using a Jackhammer Chatterbait. 21.5" Largemouth weighing 5.76 lbs.

SANTEE COOPER RIG by Danny Cossich



If you ever heard me talk about Blue Catfish, you have heard me state time again that Shad is the best bait. I have given demonstrations on how to use a castnet to catch Shad, but if you just can't get the hang of throwing one or whatever the reason, you can still catch those big fish anyway. Everyone can catch Bluegill, and those monsters love them as well. Just remember, that Bluegill is a gamefish, so you are only allowed to use them as bait if you catch them on a hook and line. You can cut the bait into filets, or you can use the whole Bluegill. If you use live Bluegill, it's possible that you might even catch a large Flathead.

The Santee Cooper Rig is a rig that has been gaining popularity in the catfishing world, when targeting blues or channel catfish on lakes and in Rivers that have slow current. The catfish rig acquired its name as it gained popularity by catfishermen in the 90's when they used it on the Santee Cooper Chain in South Carolina. There are a number of variations, but the basic rig consists of a slip sinker rig with a longer leader and adding a float to keep the bait off of the bottom. You will catch larger fish by placing the bait in front of the fish instead of the bottom of the lake where many of the little catfish are feeding. I have caught many catfish either drift

fishing, or anchored.

SPEAKERS

March - Andrew Ragas
(Wisconsin Bass Fishing Guide Service)
Small Mouth Bass

April - U.S. Coast Guard Auxillary
Boat Safety and Update on ILL River
Closure AND Tom Cebula about
Chatterbaits.

Your donation of aluminum cans and batteries helps our club pay for speakers and programs that benefit YOU! Please be generous and DONATE!

Got a great fish photo or story? Share it in our newsletter. Send photos and/or stories to the newsletter in care of Jeff Nieland at: jjnieland@gmail.com

Need helpers for Prairefest - Both for Booth and Kids Fishing. Please contact Danny Cossich at ilcajun@msn.com. Date is Saturday, June 20th.

If you have a favorite place to fish, please share your spot and write a little synopsis of what makes it special. Send it to jjnieland@gmail.com

PICK A COLOR by Bob Boelke

I read an article in Midwest fish & Game that discussed how and why Bass see in color. As compared to humans with three Cones in the eye which see red, green and blue; Bass only have 2 cones and only see Red & green. This research started back in 1937 by biologists F A Brown Jr. Over the past 60+ years Bass were trained to target certain colors for a food reward. The cone studies were recently completed at Universities in Illinois and New York.

During this research it was revealed that Bass trained to attack red or green exhibited a high degree of color selectivity: red targets were chosen 80% of the time and green targets were chosen 75% of the time. On the other hand, blue was only targeted 48% and black 40%. Bass trained to attack white only targeted 33% of the time and chartreuse 30%.

What does this mean??? Well, Bass see white and chartreuse as basically the same color. The cellular composition of the Largemouth Bass' eye is tuned to respond to two colors, red and green. Outside these colors, many other dark colors appear quite similar to Bass (like blue and black). So, does it matter if your lure has both white and chartreuse on it or if the lure is blue & black. Probably not, but a lure of white and red (showing contrast) might be more effective.

So depending on which type of lure you choose; top water, sub-surface or bottom bumper, as well as water clarity and noise to impact their lateral line, color and contrast can also be an important factor in choosing that next lure!!

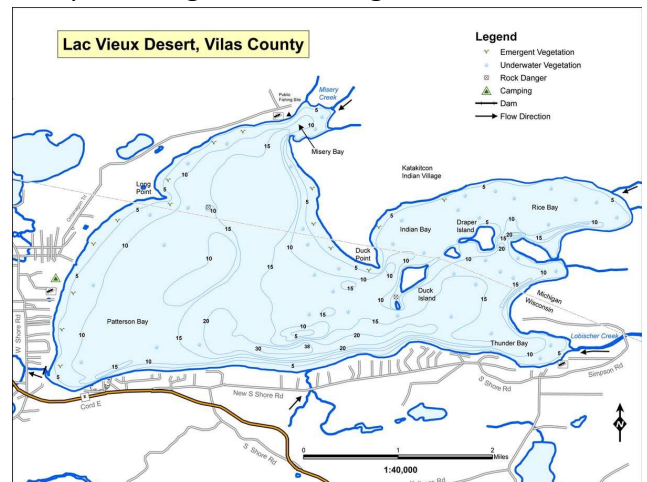
MY FAVORITE FISHING SPOT by Jeff Nieland

My Favorite fishing spot is a boundary lake between Wisconsin and Upper Michigan called Lac Vieux Desert. It's a 4017 acre lake with a maximum depth of 38 feet. It's located in Vilas County Wisconsin, about 30 minutes north from Eagle River Wisconsin.

There are 2 nice boat landings, one on the Wisconsin side and the other on the Michigan side. The variety of species is what I like. Yellow Perch and Walleye are my main targets, but there are also Northern Pike, Muskie, Crappie, Blue Gill, Sunfish, Rock Bass, LargeMouth Bass, SmallMouth Bass.

There is an abundance of wildlife, including Deer, Loons, Bald Eagles, (once saw a bull moose swimming across the lake).

The lake is large, so it can get rough, but there are islands you can take shelter from the wind. There are also many other smaller lakes in the Eagle River area. Also since it's a boundary lake, there are special bag limits and regulations.



If anyone is ever interested in a side trip, please let me know.

Upcoming 2020 Fishing Events

April 18th	Illinois River, Morris IL	Catfish
** April 19th	Heidecke Lake, Morris IL	Walleye
May 2nd & 3rd	Clinton Lake, Clinton, IL	Bluegill Bass
May 30th & 31st	Chetek Chain, Chetek, WI	Pike Crappie
June 13th	Prairie Lake, Jim Edgar Panther Creek, Chandlerville, IL	Muskie
July 18th & 19th	Mississippi River, Pool 13, Savanna, IL	LM Bass, CatFish
August 15th & 16th	Illinois River, Ottawa, IL	Drum WhiteBass
September 19th & 20th	Winnebago Chain, Winneconne, WI Landing on the Wolf	SM Bass White Bass
Oct 25th	Crab Orchard West End Ramp Carterville, IL	Crappie

****Coast Guard Boat Inspection after the April 19th Event at Heidecke Lake.**

*We offer Tournaments to all members during Events when noted above. It's not required that you participate in the Tournaments. All Participants in the Tournaments are required to sign a Release of Liability prior to the tournament start and all Boat Owners are encouraged to carry boat Insurance

2019 Angler of the Year

1st Place - Jim Frohlich
2nd Place - Danny Cossich
3rd Place - Amy Andrews
4th Place - John Cox



One day, two guys Joe and Bob were out fishing. A funeral service passes over the bridge they re fishing by, and Bob takes off his hat and puts it over his heart. He does this until the funeral service passes by. Joe then said "Gee Bob, I didn't know you had it in you!" Bob then replies " It's the least I could do. After all I was married to her for 30 years."