

# 1990s

The Louisa Airport and Industrial Airpark again played a major factor in the economic growth of Louisa County during the 1990s. The industrial park added multiple companies, increasing the number of manufacturing companies in particular. Reviews at this time highlighted the business park as a successful example of development projects for its a significant impact on the business of the surrounding area.

Development and business centers grew during the decade. This included the expansion of the Louisa Marketplace Shopping Center and the arrival of several businesses at Zion Crossroads.

Medical services arrived in the county as well, namely with both the expansion of the Louisa Medical Center and the opening of the University of Virginia Health Services Foundation Dialysis Center at Zion Crossroads in 1997.



Unknown. (1997, January 9). Louisa Marketplace expands [Photograph]. *The Central Virginian*, 6.

Scenes of two separate movies were shot in the town of Louisa in the 90s. The first was the 1994 *Foreign Student*, which used businesses along Main Street to recreate the 1950s era.

**Did you know?**

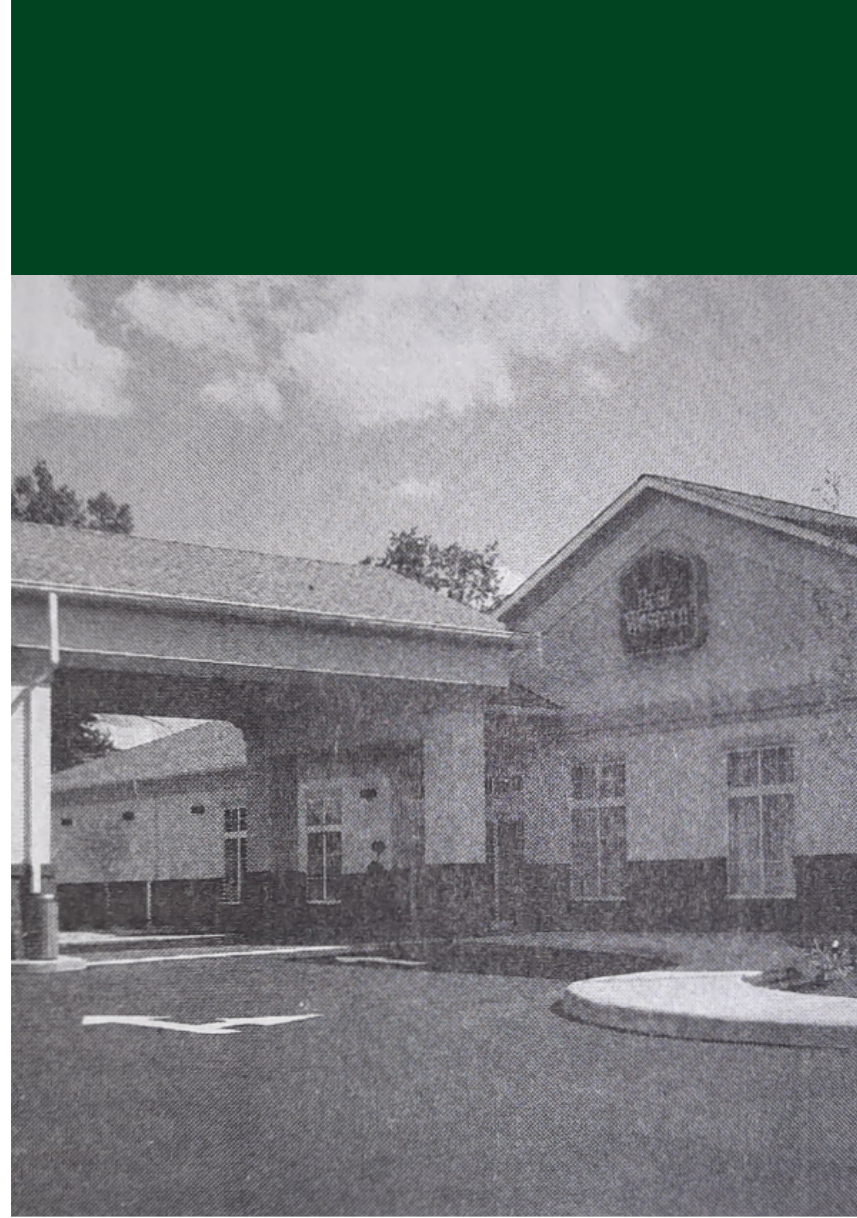
The first LEED (Leadership in Energy and Environmental Design) gold-certified wine-tasting facility in Virginia was built in Louisa County in 2010.

# 2000s

Zion Crossroads was an epicenter of economic growth for Louisa County in the 2000s. In 2007, large box stores such as Walmart and Lowe's Home Improvement announced future locations there. Also, a Best Western hotel opened in 2007, and it pledged to remain a community-centered business.

Growth of business around Lake Anna boomed in the 2000s with the opening of a watercraft rental service and the continuation of businesses centered on the lake including real estate agencies and tourist services.

Advertisements featuring technology emerge at this time. Businesses incorporated the internet into their service models and internet providers began to advertise heavily to residents of Louisa during this decade. As a result, services such as online banking, advertised in 2003 by a Louisa bank, became possible.



Best Western, Zion Crossroads, Virginia.

Unknown. (2007, July 26). Best Western location opens [Photograph]. *The Central Virginian*, A-13.

# 2010s

Economic growth in Louisa continued at Lake Anna and Zion Crossroads. These locations became the centers of business and commerce at the ends of the county.

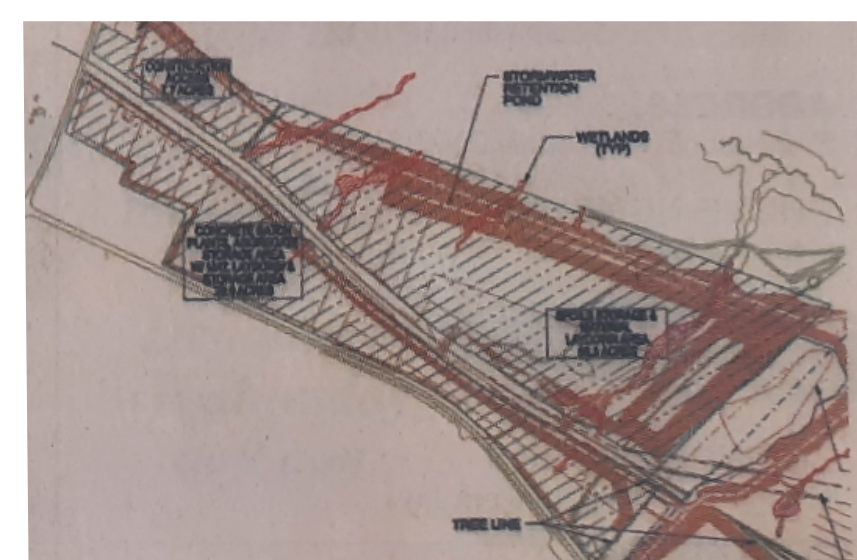
At Lake Anna, development focused on benefiting future growth through new and improved infrastructure like the expansion of the water line systems and the Food Lion at New Bridge Landing. The Boardwalk at Lake Anna was also constructed in 2010 and became the home of numerous new businesses.

At this time, the North Anna Power Station purchased additional land for future use and a proposed expansion with a third reactor.

Zion Crossroads became its own postal destination in 2010, a change that had been desired for years. This was regarded as a way to improve commerce by making businesses easier to find. A new shopping center was also built at Zion Crossroads.



Food Lion. (2011, January 13). New Bridge Landing [Advertisement]. *The Central Virginian*, A-6.



Drawing for VEPCO's proposed third reactor expansion

Virginia Electric and Power Company. (1980, April 24). VEPCO fuels North Anna 2 [Map]. *The Central Virginian*, 1.

Today, Louisa County retains an agricultural economy with farms which produce a variety of crops and livestock. Throughout the last century, the economy shifted from agriculture to include industry and commercial business. Louisa now contains a number of industrial parks, and a wide variety of businesses are dispersed across the county with several large centers of commerce that include Lake Anna, Zion Crossroads, and the towns of Mineral and Louisa. Though still considered rural countryside, Louisa County boasts a diverse economy primed for growth in the next 100 years.