



Louisa Hardware Company. (1929, April 25). The last word in planter design [Advertisement]. *The Central Virginian*, 3.

Chevrolet. (1957, April 25). Biggest sellers...because they're biggest savers! [Advertisement]. *The Central Virginian*, 6.



1929 Chamber of Commerce attempts to reopen the mines in Mineral

1927 Louisa County Chamber of Commerce is founded



Woodward-Vaughan Motor Company. (1930, January 30). The new Chevrolet Six [Advertisement]. *The Central Virginian*, 2.

1941-1945 World War II



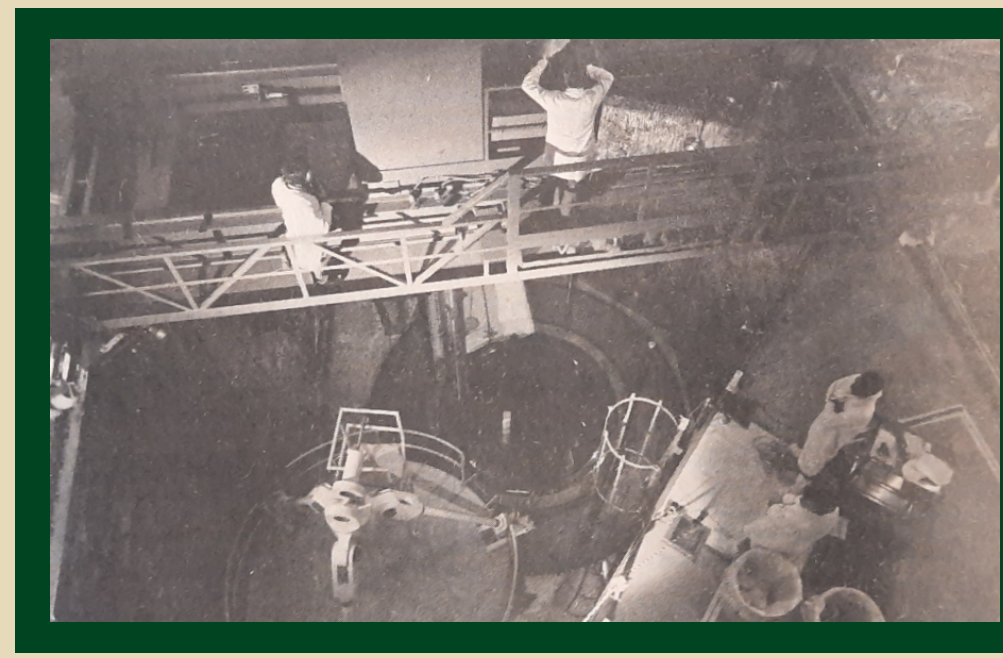
Hadder Motor Co. (1960, April 7). Meet your new McCulloch chain saw dealer [Advertisement]. *The Central Virginian*, 3.



Virginia Electric and Power Company. (1957, January 3). Every lady needs a lift on Mondays [Advertisement]. *The Central Virginian*, 2.

1973 Land is bought for vermiculite mining in Green Springs

1978 Vermiculite mining begins in Green Springs
North Anna Power Station begins operation
Louisa airport project begins



1980 Second Reactor comes online at the North Anna Power Station

1993 Main Street Louisa businesses used as a movie set for 1994's Foreign Student

Unknown. (1993, April 29). The town of Louisa goes "Hollywood" [Photograph]. *The Central Virginian*, 1.



Unknown. (1980, April 24). VEPCO fuels North Anna 2 [Photograph]. *The Central Virginian*, 1.

1997 Louisa Marketplace Shopping Center expanded

2007 Walmart, Lowe's, and Best Western come to Zion Crossroads

2010 Zion Crossroads becomes a postal destination

North Anna Power Station buys more land for a possible future expansion

Louisa County is home to the first LEED (Leadership in Energy and Environmental Design) gold-certified wine-tasting facility in Virginia

2020