



May 2026

The not so

Wrinkly Rag

The Shed is supported by the Shire of Mundaring, Lotterywest, Mundaring Community Financial Services (Bendigo Bank), Department of Infrastructure, Transport, Regional Development and Communications, and the WA Department of Communities.

Donations of \$2 and above are tax deductible – just ask the Treasurer for a receipt.

What's on in the Next Month or 2?

General Meeting	11am on 21 st of May 2026.
Wood carvers	7:00pm every Monday – contact Terry 0429-951-393
Fundraising	Next raffle on 13 th of June at Woolies.
Public Open Saturday (usually last Saturday of the month unless it's a public holiday)	30 th of May - Open Morning 8:00am-noon. Bacon & egg toastie and juice plus tea or coffee for \$5 - 8:00am–10:00am. All welcome, even family, friends, neighbours.
Thursday Theatre	10:30am on 4 th of June 2026 in the main hall – “Pink Panther”
Committee Meeting	11:00am on 11 th of June 2026.
Deadline for Wrinkly Rag copy	5:00pm on 12 th of June 2026.
Wrinkly Rag publish	5:00pm on 14 th of June 2026.
Speakers' Circle	10:30am on 9 th of June 2026 – Darren Hicks: “It's never too early – or too late – to take heart health seriously”.

Editorial – Ross Boughton

Wrinkly Rags are published by the Monday before the monthly general meeting based on information provided up to the previous Friday, being the day after the monthly committee meeting.

Please send articles of general interest (up to 2 A4 pages), photos, funnies, leads to president@mundaringshed.org.au for inclusion in the Wrinkly Rag. Only **minimal** edits will be applied – **spelling and grammar errors** may slip through. 😊

Normal publishing rules apply – if you “borrow” material, please attribute it to the owner.

Disclaimer

The information in this publication is of a general nature. The articles contained herein are not intended to provide a complete discussion on each subject and/or issues canvassed. Mundaring Community Men's Shed Inc does not accept any liability for any statements or any opinion, or for any errors or omissions contained.

President's Patter – Ross Boughton



Our regular “last Saturday of the Month” open mornings are continuing with a \$5 bacon and egg toastie and juice and tea or coffee from 8-10am. This event will continue while ever there’s interest. It is open to everybody, not just shedders, allowing us to show (and sell) what we make and let people know the full gamut of Shed activities. The next event will be on the 30th of May. Please come along and support the Shed if you can; if you can help with catering, all the better.

It is often said there are 3 ages of men:

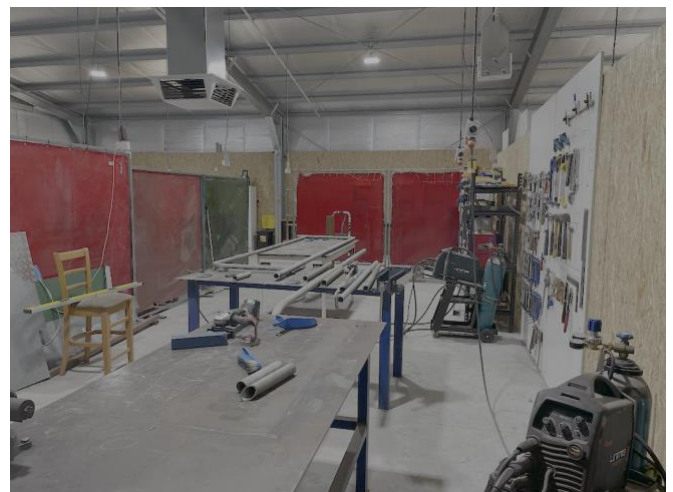
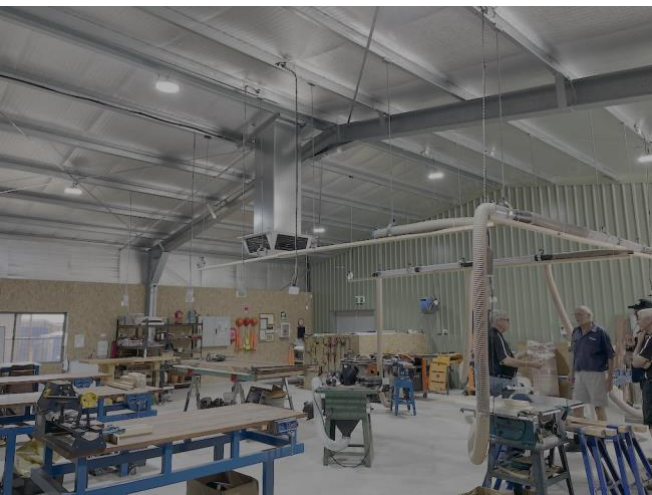
- Young – enthusiastic, full of ideas, ready to change the world,
- Middle-aged – getting by, clearing debt, minding grandkids, ideals have turned to pragmatism,
- Aged – reasonably well off, inward-looking, still minding offspring, resistant to change.

Of course these are generalisations, but at the Shed there is a similar “vibe” – maybe as we head into our second childhoods, we can revisit the energy and optimism of youth.

The Shed is run for its members, by its members – please speak up about the things you like about it, and those you think need changing. New ideas are always welcome but need to be balanced against the Shed’s stated objectives (in the Rules of Association) and the overall needs of members (the committee has the job of maintaining that balance).

Gidgegannup Shed visit for Zone Meeting

Kevin Bryant and I attended the NE Metro Zone Meeting of the Men’s Sheds of WA on Monday the 13th of April and were amazed at what Gidge have achieved in a year since funding started to appear.



New Members

New members in the last month: Please welcome Pete Pendlebury and Henry Muharemovic.

Around the Shed

The “Little Library” in Sculpture Park

Refurbished for the 3rd or 4th time, after vandalism, by Martin Beal and Ivan Gian-Piero.



Installed by Martin, and Caden Quartermain.

Outdoor Setting in Courtyard

Finishing touches from Geoff Winsor and Pete Airey.
Note 3 supervisors in the background.



Anzac Service

Eric Smith conducted a very moving Anzac service for the Shed on Tuesday the 28th. Unfortunately, I didn't get a photo of him at the time.



Flag raising by David Bowden (ex-RAAF)



Wreath laying by Pat Page (ex-Army)

Anzac Mourning – Rob Greenwood

It's Anzac morning
and I'm still in bed
with no disrespect
to the dead

for the valour and other
haunting cries of each
mother... their pain
and anguish instead

my grieving in private
is not just for our sons
cut down in the prime
of their youth

but that we've learned nothing?
some ninety (now 100) years on
from their deaths in
the mud and the filth.

Tribute on Belmont RSL Anzac Day 2008 to the life and passing of Fred McKenzie, one of some 750,000 Australians who marched in protest around Australia in 2003 against the 20.3.2003 - ? War in Iraq, 'The Three Trillion Dollar War' and whose collective statement was ignored by then Howard government.*

© Rob Greenwood 151 Coolgardie Ave. Redcliffe. rob1@inet.net.au 9277 2028 25.4.2006/2015 90 wds

* Joseph Stiglitz past World Bank Chief Economist; admission in his book 'The Three Trillion dollar War'



Plastics Recycling – Stephen Fox

Far too long in coming has been our recycling of plastic bottle tops, however all good things come to those who wait and it's time to share the many comments, and questions, from members of the shed.

Whilst we have clearly been collecting used plastic bottle tops we are now at the next stage of the original five-point plan of (i) Collect, (ii) Sort by colour, (iii) Sort by plastic type (Resin number), (iv) Wash Shred and (v) Process.

In no particular order an example of some of the comments and questions are:

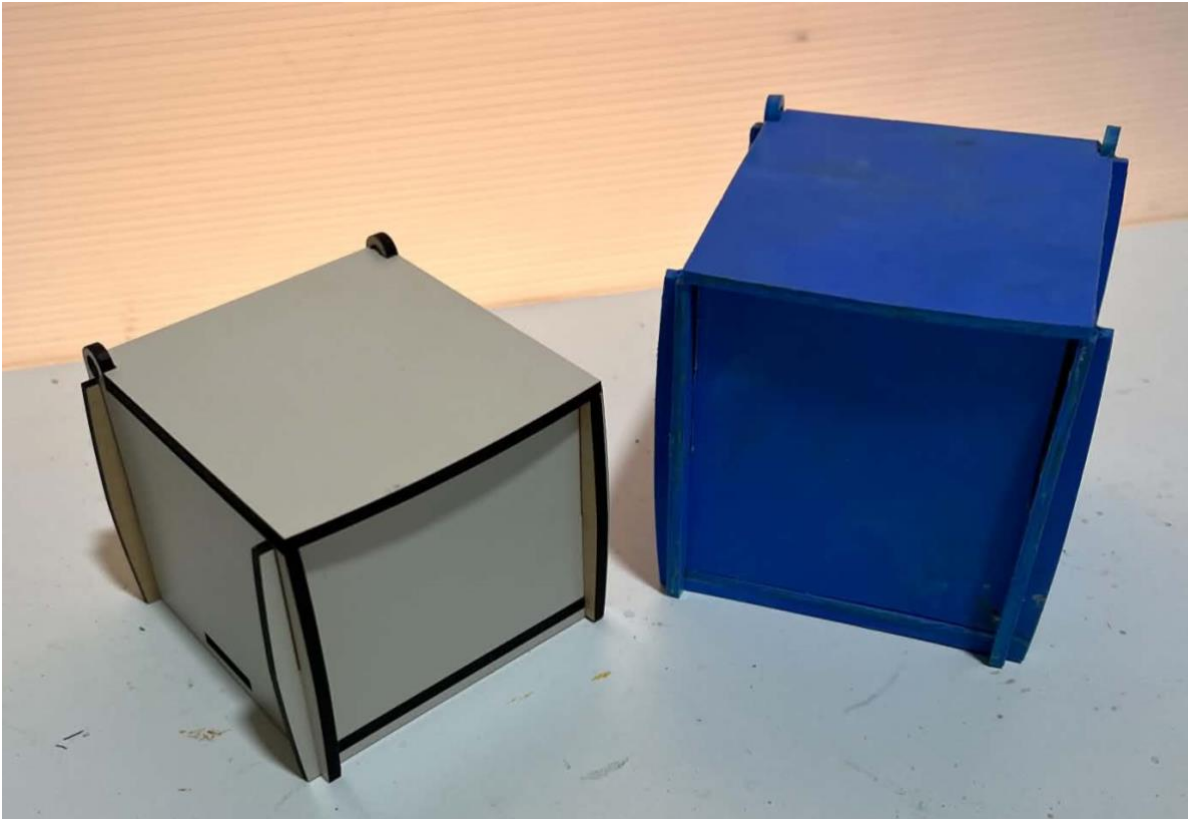
- A. How is the plastic recycling going.
 - i) *We have space to operate in, we have a plan or layout for the room, and we have many of the items of equipment we need.*
- B. What items are under consideration. / Have you considered making???

 - i) *Many of the items currently made from 3mm MDF and sold from our shop gallery could be made from recycled plastic of similar dimensions.*
 - ii) *Several suggestions for bicycle parts, park benches and things for opening drink cans.*

- C. Is the process likely to use a lot of power?
 - i) *Yes, and the committee, when giving approval for the recycling of plastic to go ahead, asked that power consumption be monitored.*
 - ii) *We already know that to make a 3mm thick sheet of plastic from sorted, washed and shredded plastic (150grams) in a Toasted Sandwich maker uses around one kW of power (Approx. 30cents)*
- D. What are the health risks?
 - i) *Plastic dust needs the same consideration as wood dust, and we already have a suitable dust collection/filter system to install in the room.*
 - ii) *We plan to work with formable plastic (Think warm plasticine) at temperatures up to 210degC the resin types 2, 4 & 5 do not give off harmful fumes at that temperature with some fumes becoming challenging around the 250/260deg C range.*
 - iii) *We plan not to process PVC as this is more toxic when heated.*
- E. How does this relate to 3D printing?
 - i) *The now well-established use of 3D printers in the home has not produced too many health concerns, using plastic filaments such as ABS, HDPE, LDPE and PLA. Other than guidance around temperature and good ventilation.*
- F. What types of plastic are proposed to be recycled?
 - i) *In a previous Wrinkly Rag article, I described earlier plastic bottle top activity as PPW245 (Precious Plastic Wooroloo resin numbers 2, 4 & 5)*
 - ii) *An online search for Precious Plastics will yield a lot of information on this worldwide movement that forms a great knowledge base of reliable and creditable information, as well as open-source machinery designs.*
- G. Will there be roles for members.
 - i) *Yes, there will be opportunities to work with the five-point plan, bring ideas forward, innovate better ways to process the plastic bottle tops and...*
 - ii) *Work with CNC (Computer Numerical Control) of Laser Cutting and Routers and quality tuition.*

H. Are there any good information videos?

- i) 'Yes, hundreds' two of the most inspiring active contributors via YouTube are 'The Brothers Make' and 'Precious Plastics'.
- ii) Some examples [How to Identify Unmarked Plastic](#), [Your First Recycled Plastic Project](#), [11 things we WISH we knew when starting Plastic Recycling](#). [3 Easy Recycled Plastic Projects | Recycling for Beginners](#).



Example of a No Glue Laser Cut 3mm scrap MDF box on the left and a similar design 3mm recycled blue plastic bottle top, router cut box, on the right.

In summing up we have a range of opportunities for our membership to Collect, Sort by colour and then by plastic types #2, #4 & #5, Washing, Shredding. Then making sheets of recycled plastic and pressing lumps into moulds. Designing and learning software such as [SketchUp 2015](#) (Design & Drawing) [Vcarve](#) (Design and Router control) [Laser GRBL](#) (Laser cutting control). Along with lots of opportunities to be innovative and inventive.

Wrinkly Smiles – Max Hore

Life's short. Make sure you spend as much time as possible on the Internet arguing with strangers about politics.

**KIDS TODAY WILL NEVER KNOW
THE JOY OF FINDING MONEY IN
A PAYPHONE COIN RETURN.**



Gender study when
I was a kid



MEN IN THE PAST



MEN TODAY



MY ABILITY TO
REMEMBER SONG
LYRICS FROM THE
80S FAR EXCEEDS
MY ABILITY TO
REMEMBER WHY I
WALKED INTO THE
KITCHEN.

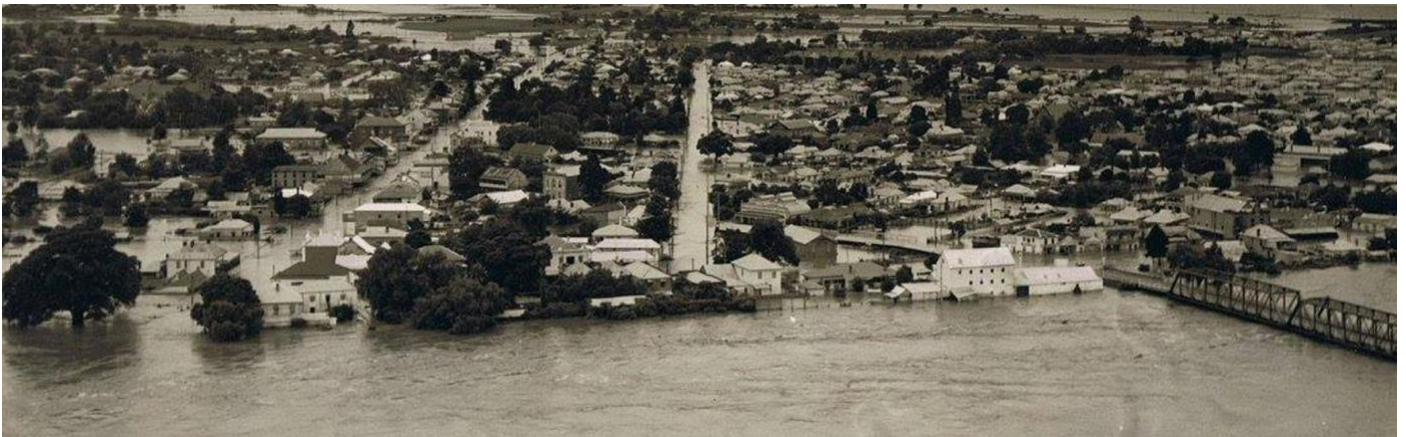
Floods 1949 to 1955 Singleton NSW - Eric Smith

An interesting situation arises with the recent rains, flooding and cyclones in the northern part of our country. I would like to relate an event that happened years ago.

From the ages of 8 to 14 I experienced several floods in the town of Singleton in the Hunter Valley NSW. We lived in the last house on Glenridding Rd which was on the western route of the town to the now wine area of Pokolbin and Broke and an alternative route to Sydney via Bulga, Putty and Colo to western Sydney and the Blue Mountains. The Hunter River traversed around the area in a zig zag type of pattern and came within about a mile of the area where we lived. Just up the road there was an area of lower land called 'the doughboy' which cut across the country towards an area called Whittingham, mostly dairy farms. This was usually the first sign of flooding which cut the road and then followed the depression to the New England Highway further south of the town and joined the river again.

In 1949 the family were evacuated to my father's brother's home where we resided in his large shed for a few days. When all that was over and the river subsided, we returned home to cleanup and get on with life. This happened to the family and several other residents who lived on the western side on the railway line. It was used as the levee for the waters west of the town.

Flooding happened three more times and then in 1955 there was a catastrophic flooding event where the whole town was flooded. Streets and other areas were up to 2 metres deep. Streets were like torrents as the flood waters went from the northern end of town to the southern end.



It was evening when we were in the process of about to settle for the evening meal, whilst my father was out helping others to raise their belongings above the rising waters, when I went into my bedroom and called mum to advise water coming in under the door. Dad arrived back home and we then proceeded to raise furniture etc. The water rose so quick that we had to give up and retired to the upper portion of the house and one of the bedrooms. At this point I point out that the house was 100 years old. Eventually demolished in 1966. The front 4 rooms were built on large logs that were dragged into place and adzed off to allow for a floor. The back portion was at ground level consisting of kitchen, dining, pantry, verandah, bathroom and a rear section for guests.

Whilst we were 'forced' to the upper section my mum, dad and I stood on a dressing table unit and my younger brother and sister slept on a floating mattress. Mum, dad and I kept nodding off with limited sleep. We kept each other awake so that we would not fall into the 4 feet of muddy water. In the meantime, dad found and carried the family pet, a grey cattle dog, and placed him on the roof of the house with some food and fresh water. Then dad went to find an escape route for the family to evacuate from the house. Eventually we all followed dad out the front to the footpath, down the street a couple of houses, through the neighbour's waterlogged driveway, across a low



rear fence to another neighbour's driveway then to the front fence where a couple of able-bodied rescuers tied a rope from one power pole to another across the street of rushing water. We all tackled the rushing water hand over hand until we all eventually arrived at the local high school. As it was one of the evacuation locations, we proceeded to it to dry out and be fed. We remained there for 3 days till the flood waters receded and then went home to clean up.

A side issue was that

an Australian army DUKW (pronounced 'duck') came down the street around the time we were being rescued.

When the authorities sorted matters out we three children were relocated to Muswellbrook for 3 weeks whilst mum and dad and helpers got our home back to a liveable situation. We then returned to our home and assisted further in rehabilitation, rebuilding and repairing what furniture we were able to. We survived to live another day. Eventually, in 1963, the town was surrounded by a man-made levee which was a big help from future potential flooding.

The name DUKW comes from General Motors Corporation model nomenclature:

- *D, 1942 production series*
- *U, Utility*
- *K, all-wheel drive*
- *W, tandem rear axles, both driven*

Postscript

In the same flood Maitland was also extensively damaged. See photos of railway station then and now.

We had an aunt and uncle and their 4 kids who lived in Maitland stay with us in Lochinvar about half-way between Maitland and Singleton. From memory, they slept on the loungeroom floor – editor (Ross)

