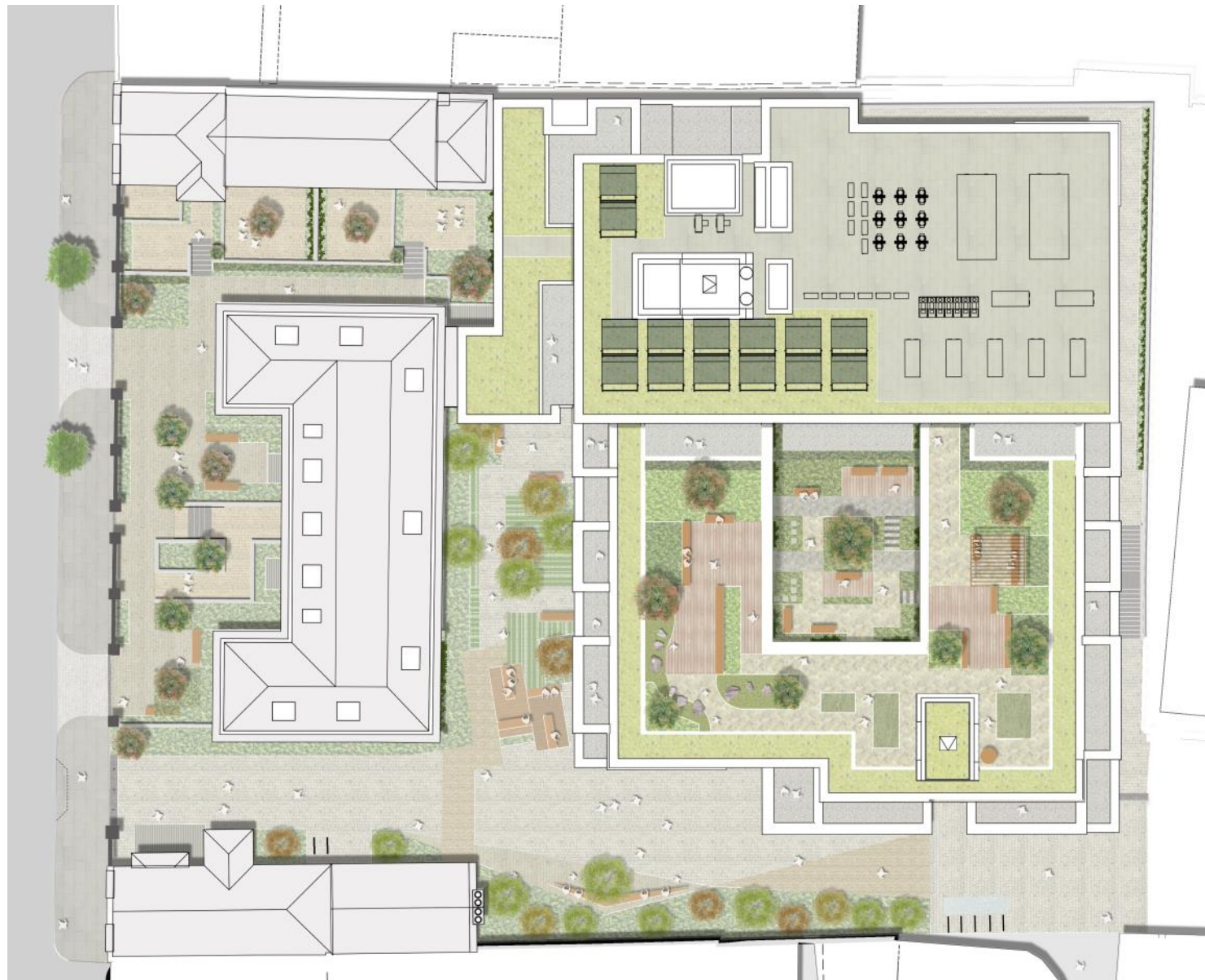
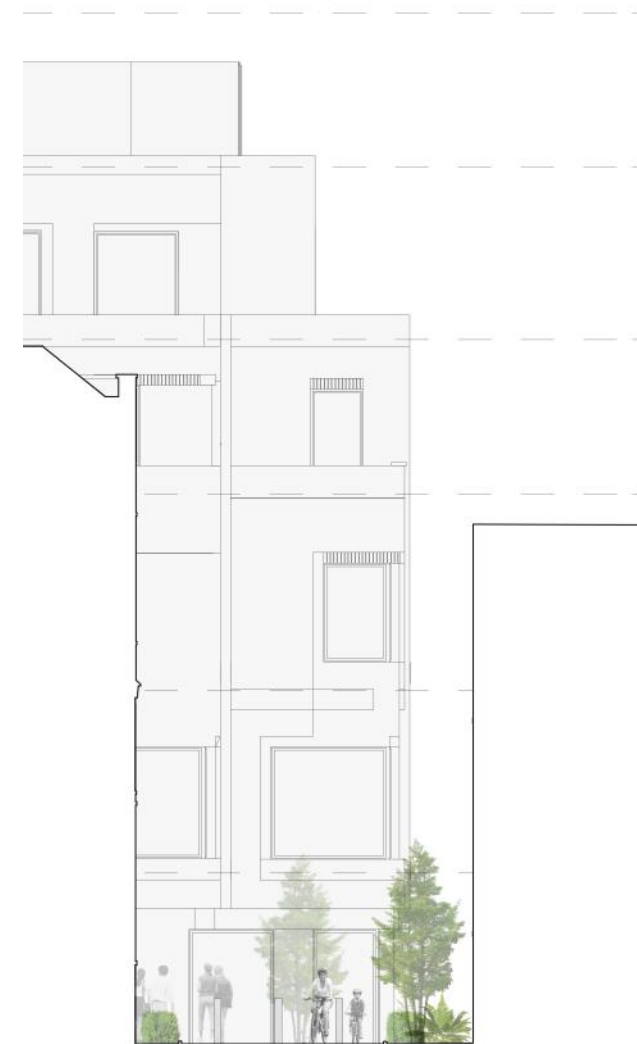


# Middlesex Annex Hospital



Client : University Central London Hospitals Charity  
 Budget: £1.8m  
 Role: Senior Landscape Architect.  
 Status: Variation to planning submission and tender.

New Mixed use scheme on compact central London site.  
 Delivering new public realm linking charlotte St to Cleveland avenue with ground floor commercial units, affordable and market housing in a grad II listed building.



Render graphics by others.



## The Hyde @ Hendon (The Rushgroves)

Client : London and Quadrant Housing

Budget: £2.5m (Landscape)

Role: Senior Landscape Architect.

Status: On site.

Working with Cullinana Studio on Technical delivery of 486 New Homes on podium landscape incorporating private and public realm and new linear park landscape with on deck attenuation.



CGI produced By Visualiser.





## EVOLUTION @EDGWARE, STONEGROVE

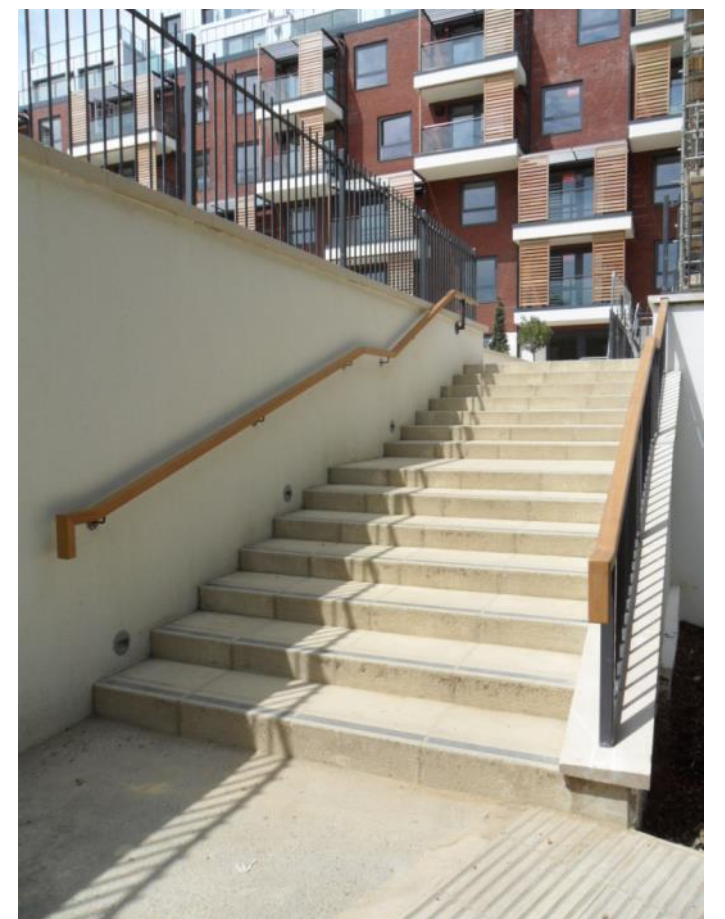
Client : Barratt West London

Budget: £12m

Role: Project Landscape Architect.

Status: Academy Court (Phase 4) Complete 2012

100% private residential units with Landscaped podium courtyard and entrance routes incorporating SUDS design features.





# EVOLUTION @EDGWARE, STONEGROVE

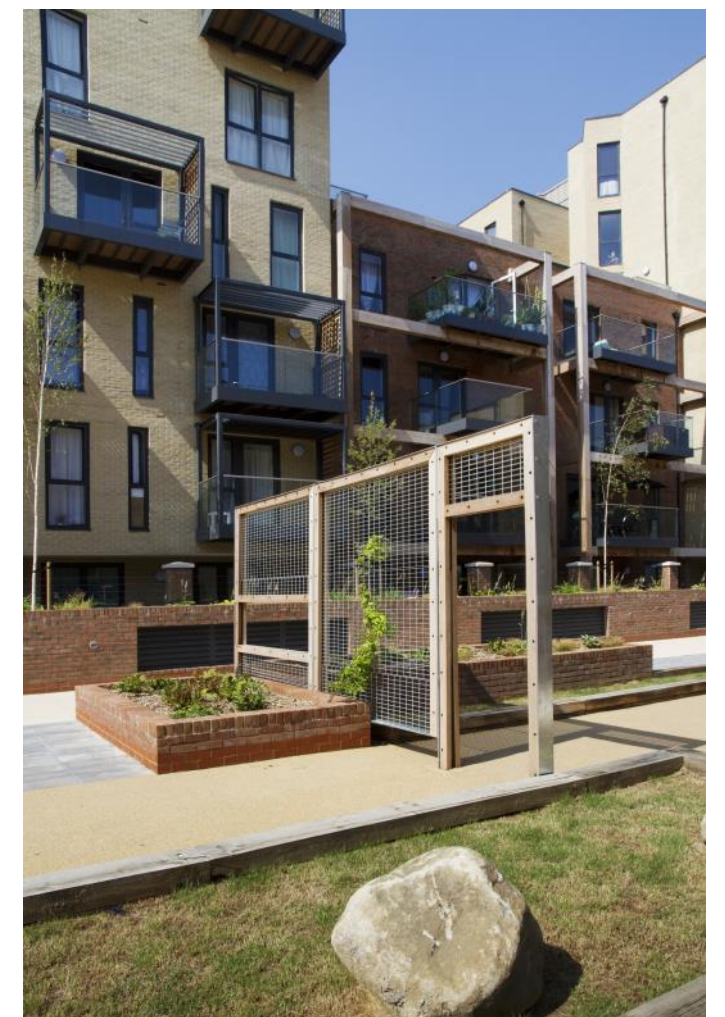
Client : Barratt West London

Budget: £12m

Status: Sterling Court (Phase 2A) Complete 2013

Role: Project Landscape Architect.

Mixed tenure residential scheme with permeable podium courtyard, elevated street frontage and terrace housing to





# EVOLUTION @EDGWARE, STONEGROVE

Client : Barratt West London

Budget: £12m

Status: Sterling Court (Phase 2A) Complete 2013

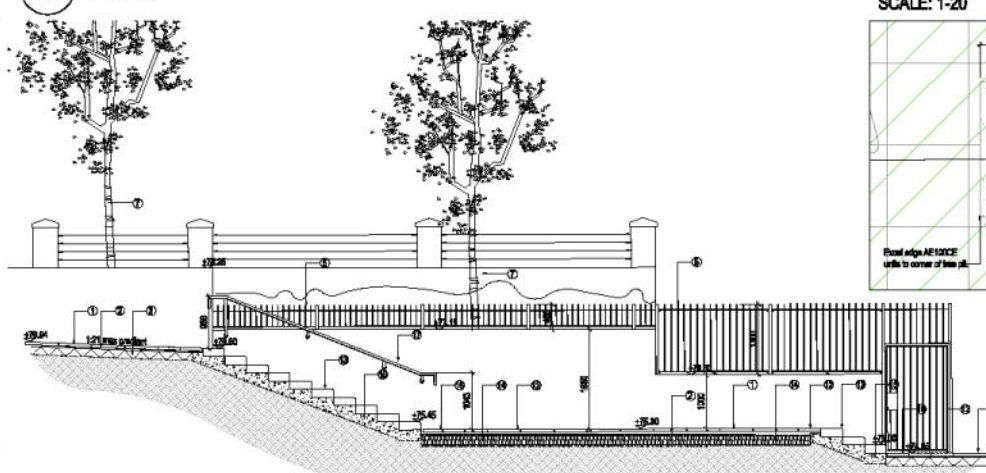
Role: Project Landscape Architect.

Construction detail drawing for end of podium courtyard covering basement car park retaining existing TPO tree leading to future central public square.

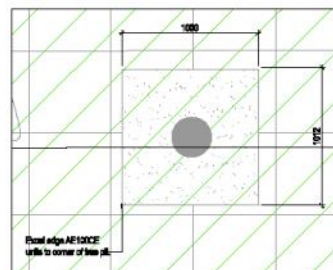
REFERENCE PLAN  
SCALE: 1-200



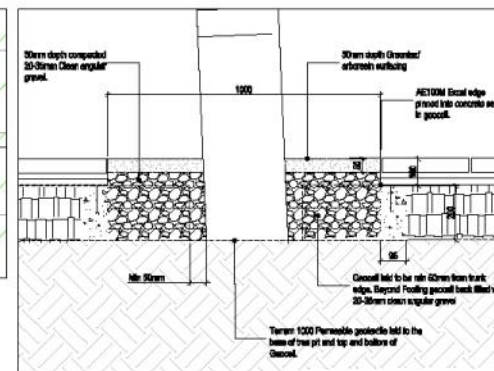
A TERRACE SECTION A  
SCALE 1:50 @A1



EXISTING SILVER BIRCH TREE PIT  
SCALE: 1-20

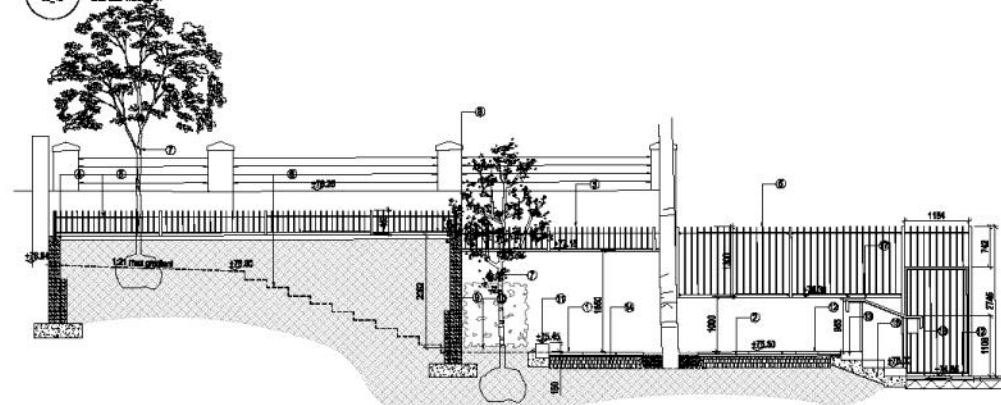


EXISTING TREE PIT DETAIL  
SCALE: 1-10

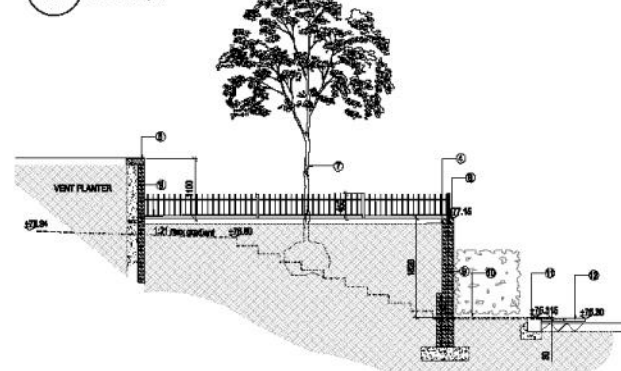


DO NOT SCALE DIMENSIONS OFF THIS DRAWING  
CHECK ALL DIMENSIONS ON SITE BEFORE PROCEEDING  
REVIEW ALL DIMENSIONS ON DIMENSION TO DIMENSION  
THIS DRAWING IS PROTECTED UNDER COPYRIGHT AND  
SHALL NOT BE REPRODUCED IN ANY FORM WITHOUT  
PRIOR PERMISSION FROM BARRATT WEST LONDON

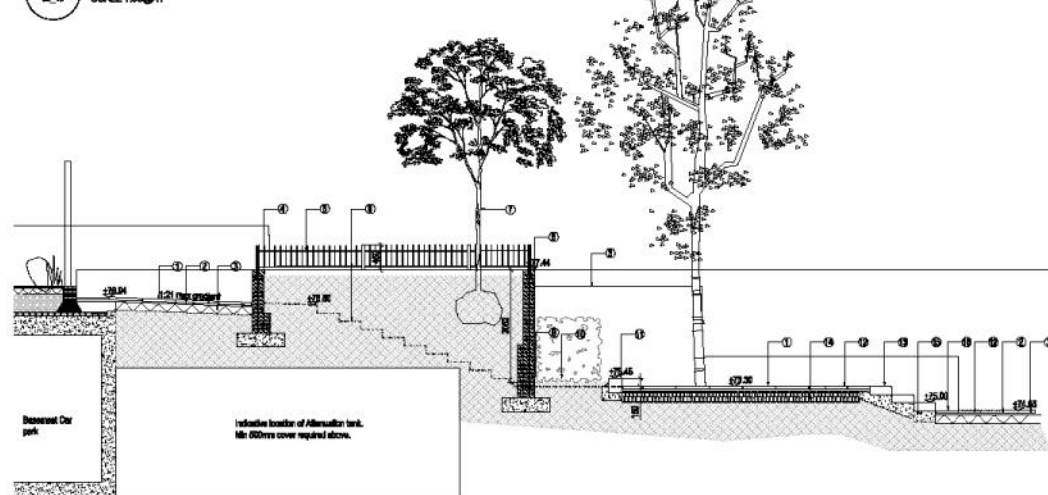
B TERRACE SECTION B  
SCALE 1:50 @A1



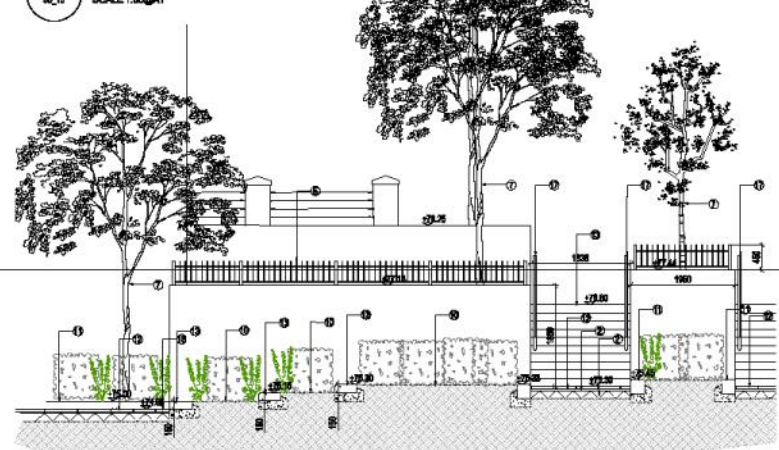
D TERRACE SECTION D  
SCALE 1:50 @A1



C TERRACE SECTION C  
SCALE 1:50 @A1



E TERRACE SECTION E  
SCALE 1:50 @A1



- NOTES:
1. Manhole 600 x 600 x 50mm flange, natural paving
  2. 50mm sand bed
  3. 100mm compacted Type 1
  4. 2 coats Bitumastic emulsion or integral tank waterproofing to rear of wall
  5. 400mm x 100mm high wall top vertical bar metal edging (see DWG B5\_18 for detail) Sub-contractor to submit proposals for approval
  6. Indicative line of slope built-in plaster
  7. Proposed new low planting
  8. Plaster retaining walls, construction and foundation to Engineers specification
  9. Sleep timbers to base of plaster walls into soft landscaping approx 1000mm C16
  10. Soft landscaping with topsoil to a minimum depth of 400mm
  11. Manhole, 250 x 250 x 100mm Silver Grey Conservation bath with 100mm up stand forming kerb edge
  12. Manhole, 400 x 400 x 400mm flange wearing surface paving to top and bottom of slope and terrace
  13. Manhole 400 x 150 x 100mm Silver Grey Step unit, Chertford Stone with level and deep side by side. Chertford Stone 100mm used to form kerb edge
  14. No dry construction area made of 200mm depth gravel laid on permeable geotextile on the existing ground, pugged in place and back filled with 100mm flange Type 3 angular material and 20-25mm clean stone around existing base form. Council to be consulted to permeable geotextile before installation of parking base course
  15. Concrete drainage, landscaping and foundation to Engineers details
  16. Manhole 400 x 400 x 100mm Silver Grey, Tarmac Conservation bath paving with 100mm flange between kerb and angled sleep timbers
  17. Handrail timber installed with metal support frame and posts (see DWG B5\_18 for detail), sub-contractor to submit proposals for approval
- All paving to be laid to shed to drainage points, not landscaping or permeable surfaces.

C1 08.05.12 AT FIRST CONSTRUCTION ISSUE  
REV BY DATE C-1K DESCRIPTION





# DRAYCOTT AVENUE ESTATE

Client : Guinness South

Budget: £180K

Status: Completed 2011

Role: Project Landscape Architect.  
Contract Administrator.

Estate renewal works incorporating SUD's details to rationalise vehicle and pedestrian surfaces , enhance site drain-





KING GEORGE VPLAY AREA

Client : LB Newham

Budget: £190K

Status: Completed 2010

Role: Project Landscape Architect.  
Contract Administrator.

Park masterplan incorporating refurbishment of the existing play area with a new natural play area. Developed

New entrance reusing existing gates to improve circulation.

New landscape ditch as part of a SUDS treatment for the play area and future water play activities and education.

Sleeper bridge over SUDS ditch

Stepping Logs

New mounding to separate spaces and provide informal play opportunities.

Woodland Valley viewed from suspension bridge providing canopy walk.

Oak posts projecting 0.5 - 1.2m out of the ground creating an informal boundary and play feature.

Central access path made from self binding gravel to improve circulation of play area.

Meadow planting and mounding defines play area boundary.

Section through log play mound

Proposed seating area linked to visitor centre

Play features

- 1. Log Play Mound  
Manufacturer: Contractor  
Activities: climbing, role play, +3yrs
- 2. Climbing Rope  
Manufacturer: SMP ref PCPUR  
Activities: swinging, climbing, physical effort +3yrs
- 3. Banister Slide  
Manufacturer: SMP ref PCBAN-15  
Activities: climbing, sliding movement +5yrs
- 4. 2No. Climbing nets  
Manufacturer: SMP ref PCSCR  
Activities: movement, climbing, role play, +3yrs
- 5. 3.0m high x0.9m wide embankment Slide.  
Manufacturer: Steel Line  
Activities: Sliding movement, +3yrs
- 6. Climbing Rope  
Manufacturer: SMP ref PCPUR  
Activities: swinging, climbing, physical effort +3yrs
- 7. Balance Blocks  
Manufacturer: timberplay ref 6.51700  
Activities: rotation, balance, +4yrs
- 8. Roundabout  
Manufacturer: Play dale.  
Activities: Spinning, group, social +3yrs
- 9. Delta basket and Zwing combi  
Manufacturer: SMP ref DS08B+2  
Activities: Swinging, group, movement +3yrs
- 10. Suspension Bridge  
Manufacturer: timberplay ref 6.61000  
Activities: climbing, running, balance, +4yrs
- 11. Rope Screw  
Manufacturer: Corocord ref 1507  
Activities: climbing, movement effort, +5yrs
- 12. Swaying Seesaw  
Manufacturer: Corocord ref 1503  
Activities: climbing, movement, swaying, +5yrs
- 13. Rope Slalom  
Manufacturer: Corocord 1505  
Activities: climbing, Weaving, +5yrs
- 14. Corkscrew  
Manufacturer: timberplay ref 7.52000  
Activities: Climbing, swinging, role play + 5yrs
- 15. Play Tree  
Manufacturer: Ruskins  
Activities: climbing, role play +3yrs
- 16. Tyre Swing  
Manufacturer: timberplay ref 7.45000  
Activities: swinging, swaying, +6yrs
- 17. Extra high swing  
Manufacturer: timber play 7.14000  
Activities: Swinging, Physical effort.

