

Window Insert Measurement & Installation Instructions



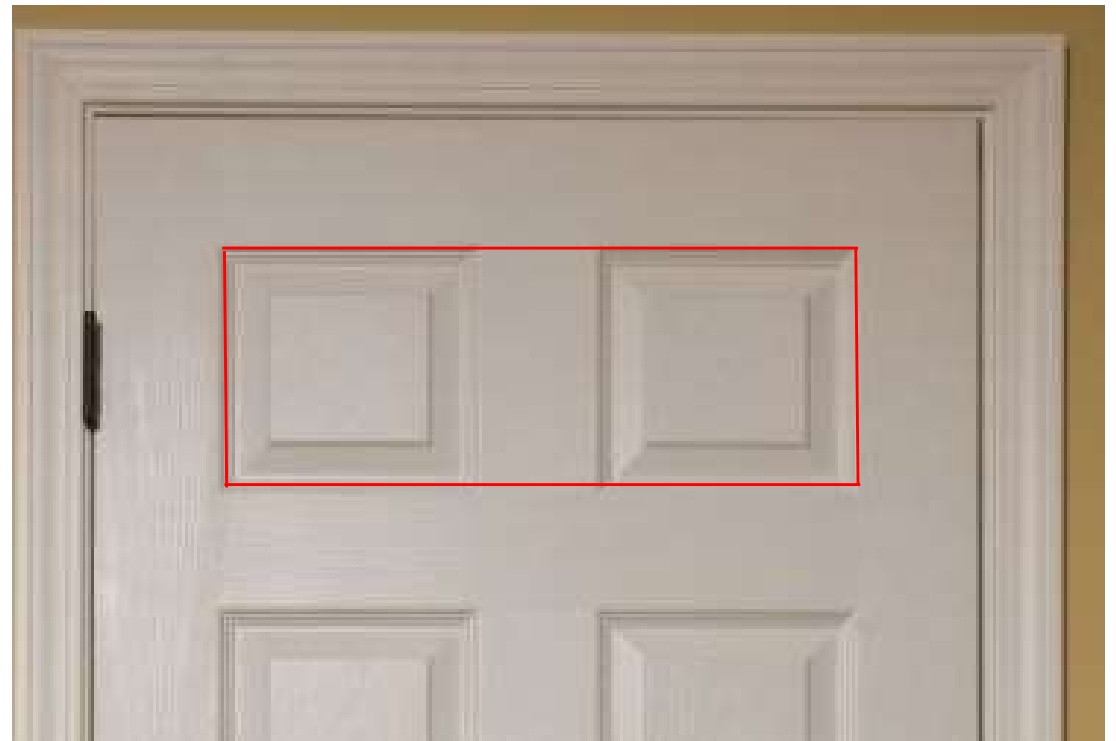
Tools You Will Need

- Sawhorses or table to lay the door on (with blanket or towels to protect door paint/finish)
- Jigsaw (with long blade and protective/mark free base or chair pads)
- Phillips head screw driver
- Drill with large bit (recommend 5/8")
- Quick clamps (with towel or protective chair pad)
- Framing square or straight edge
- Tape measure
- Permanent marker pen / Sharpie
- Caulk and caulk gun or squeezable tube caulk
- Your choice of paint and brushes
- OPTIONAL/RECOMMENDED – Wood filler/putty

Measurement Instructions



Measure the width and height of the cut out you will make in the door as shown by the red lines. The cut out should be at the edge of the flat surface of the door on all 4 sides of the panel.



Measurement Instructions

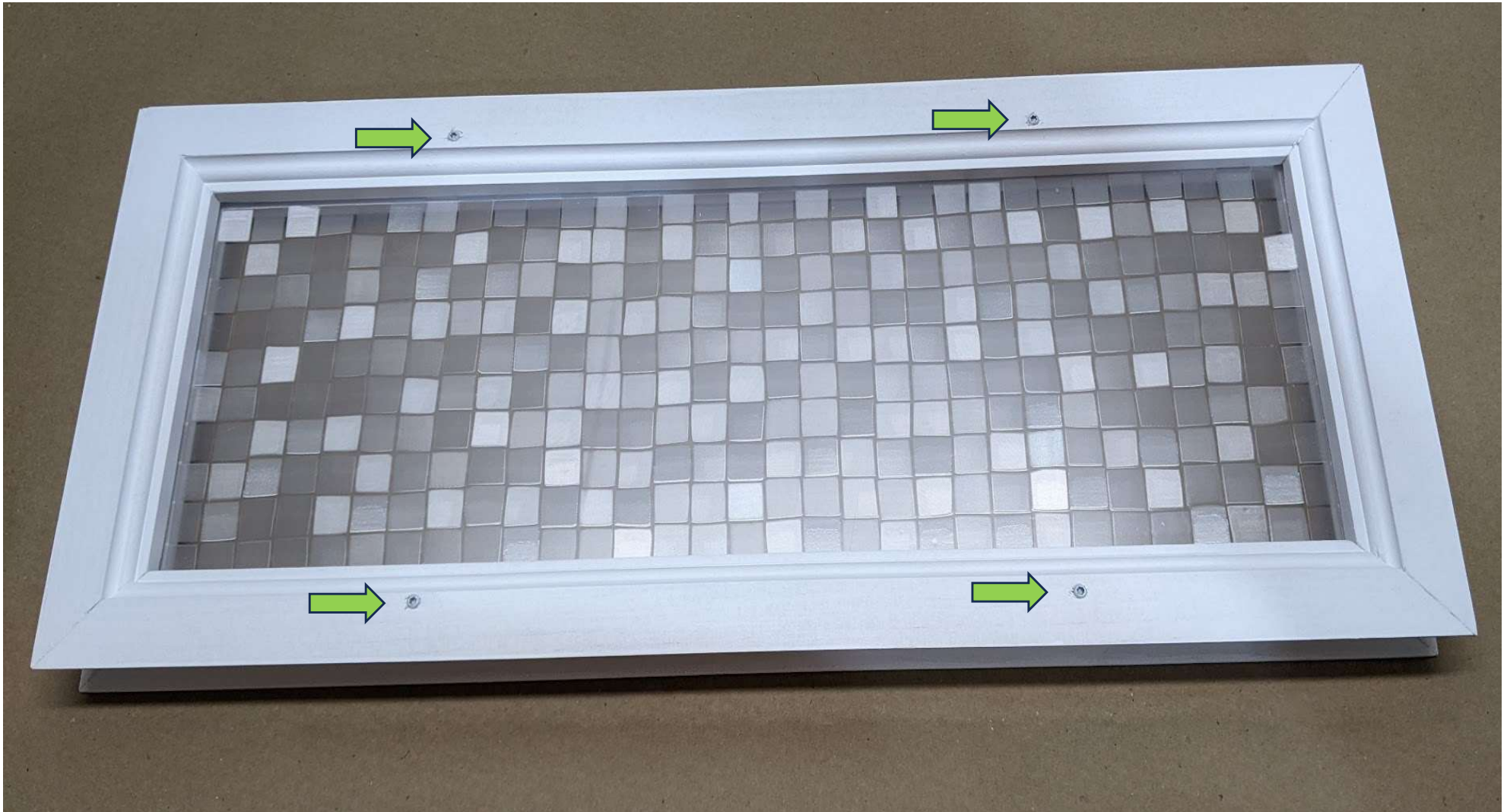
- Confirm your measurements match the information below for standard panel sizes for the door widths below:

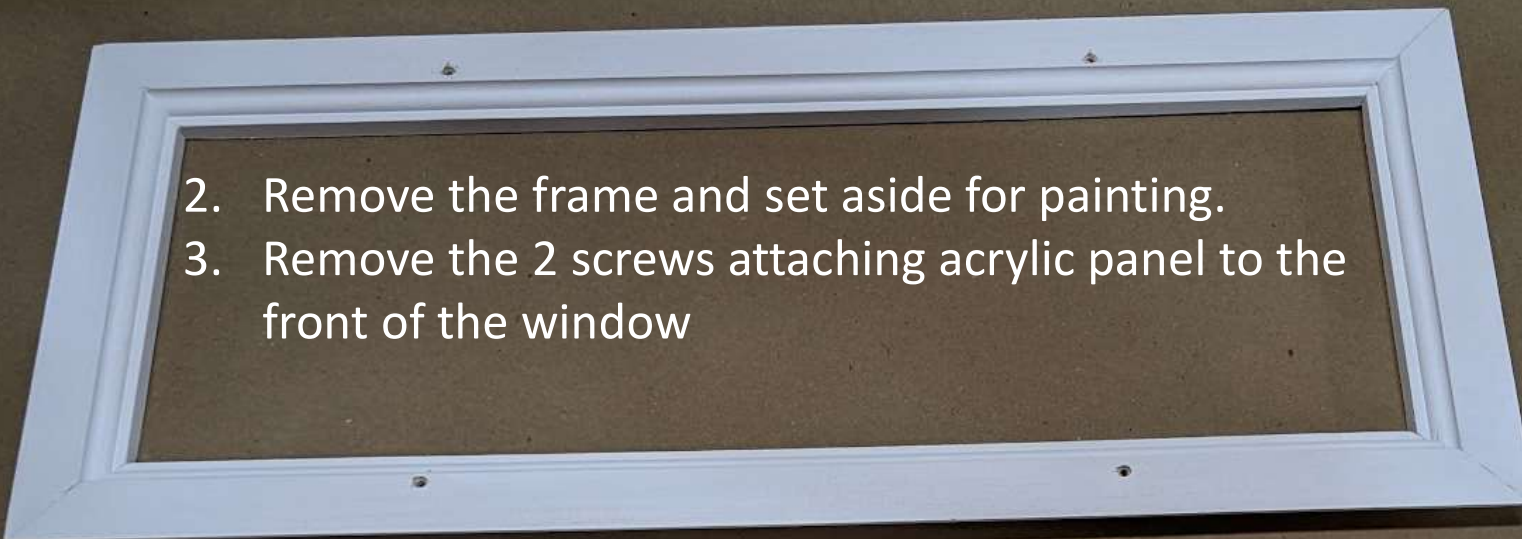
Door Width	Cut-Out Size	Frame Size
24 Inches	15 5/8 x 8 3/8	16 1/2 x 9 1/4
28 Inches	19 5/8 x 8 3/8	20 1/2 x 9 1/4
30 Inches	21 5/8 x 8 3/8	22 1/2 x 9 1/4
36 Inches	27 5/8 x 8 3/8	28 1/2 x 9 1/4

- If your panels have different dimensions or you simply want a different size for a flat panel door, email orderlumidoor@gmail.com

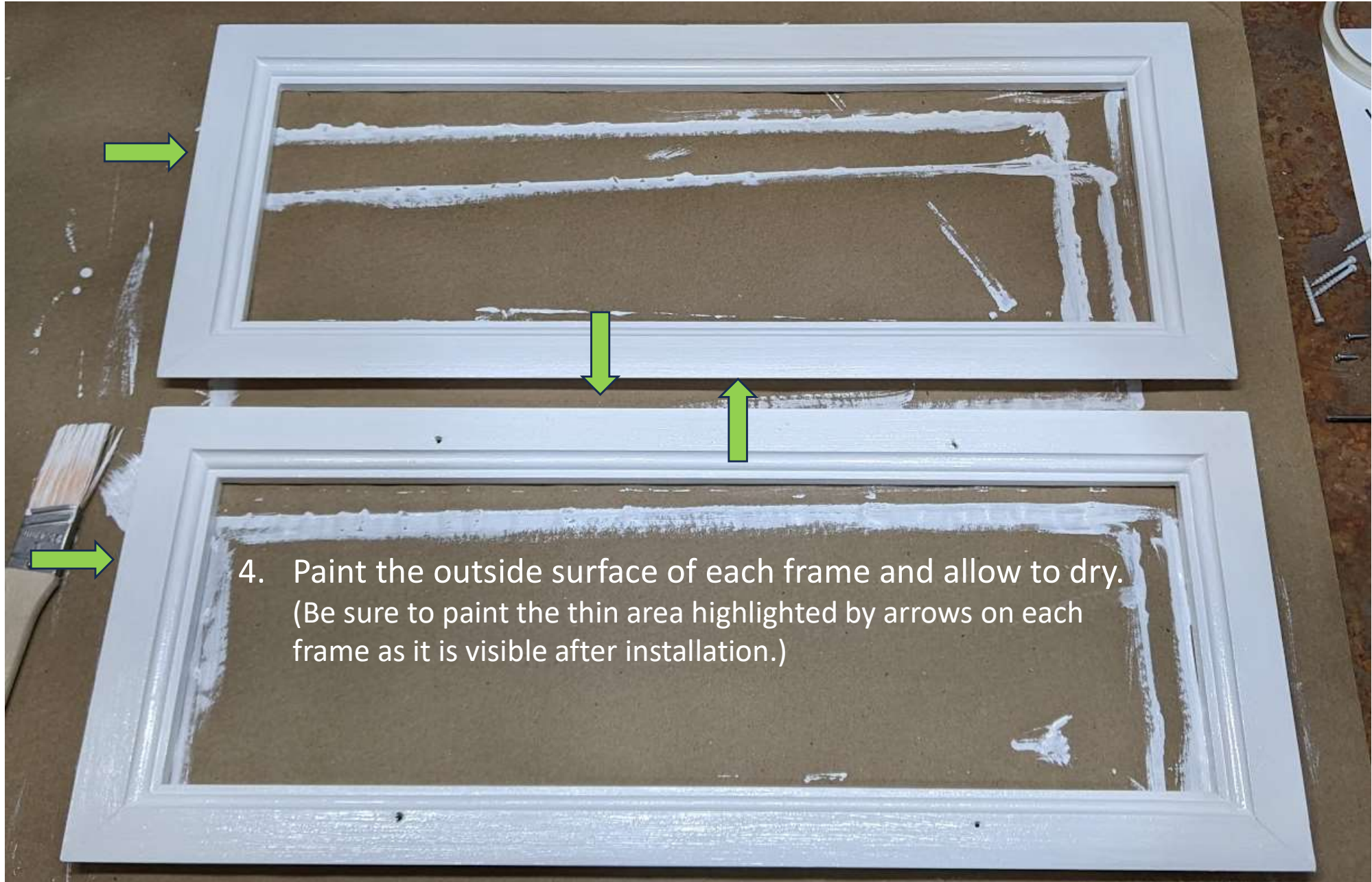
Measurement Instructions

1. Remove the 4 screws from the back side of the window.



- 
- A white, rectangular window frame with a double-beveled design. It is shown from a top-down perspective, lying flat on a dark surface. The frame is empty, with a dark brown cardboard backing visible inside.
2. Remove the frame and set aside for painting.
 3. Remove the 2 screws attaching acrylic panel to the front of the window





4. Paint the outside surface of each frame and allow to dry.
(Be sure to paint the thin area highlighted by arrows on each
frame as it is visible after installation.)

5. Reattach the acrylic panel to the front frame (make sure the decorative film is facing the table surface). **DO NOT REATTACH BACKSIDE FRAME.**



6. Completely remove the protective film from the backside surface of the acrylic pane.
7. Set both window frames aside to prepare the door for installation.



1. Remove the door to be retrofitted with the Lumidoor window and place it front side facing up on a pair of sawhorses. (Place a towel or blanket on the sawhorses to protect the door surface from scratches. Nothing should be below the top section of panels to be cut.)
2. Mark the cut out using a marker and a straight edge. (The edge of the panel to cut out is difficult to see while sawing.)



3. Drill 2 large holes where shown (recommend 5/8" bit).



4. Set up your jigsaw.

- Install a long jigsaw blade. I use these purchased from home improvement store. They are 5 ¼ inches long.
- Apply chair pads or other protective material to the bottom of the saw to protect the door while cutting out the window hole.



5. Starting from the drilled holes, cut to the adjacent corners of the marked cutout. (When reaching the end of the cut, allow the jigsaw blade to stop completely before removing to avoid damage to the door.)



6. Repeat step 5 until the cutout section is removed.



7. Remove the remaining sections in the corner for a finished rectangular opening for the window to be installed.
8. Now is a good time to vacuum the sawdust. Be sure to use a brush attachment to avoid scratching the door paint.



9. Lay the front window frame into the door. (The surface of the door seen here should be the front of the door. The window film should be on this side of the door.)



10. Make sure the window is sitting level in the cut out. (Measure the distance from the top of the window to the top of the door on both sides and adjust as needed.)



11. Prepare 2 clamps by installing a chair pad or other protective material to one side of the clamp. (or use a cloth when clamping in next step to protect door finish)



12. Use a board and clamps to secure the front window frame and acrylic panel in place. (Protect the finish of the frame and door by putting a towel or other material under the board. I use a board with painters' tape on the underside – shown in **RED** inset.)



13. Flip the door over so the backside of door and window insert are facing up. (Make sure the front window frame does not move during flipping to maintain levelness when complete.)

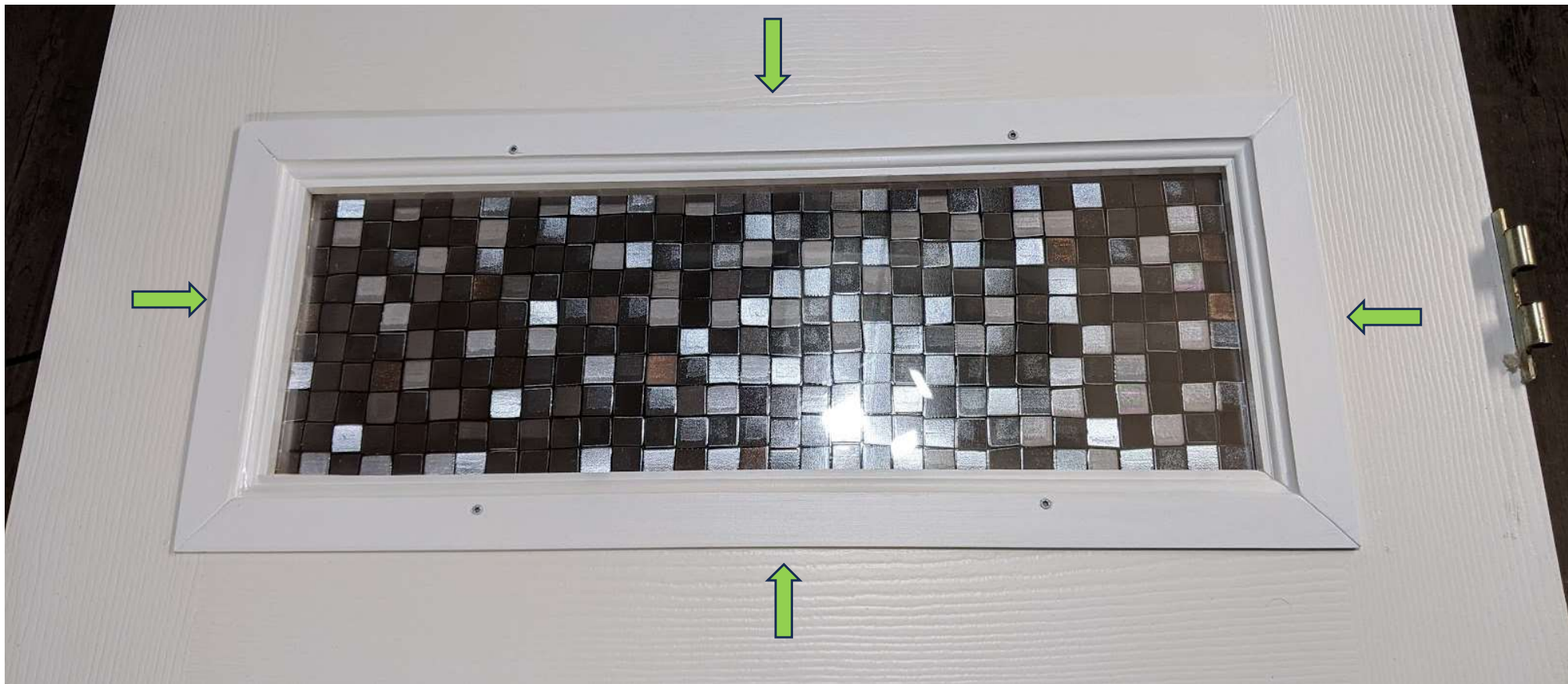
NOTE: Window may or may not have foam stripping, depending on door thickness.



13. Place the back of the frame in the cutout and secure to the front of the frame using the screws removed earlier. (Check the marks on the inside of the frame to insure assembling in original orientation.)



14. Remove the clamps and board securing the frontside frame.
15. Caulk edges of the frame where it meets the door (GREEN arrows).
16. OPTIONAL/RECOMMENDED – Fill the screw holes with putty. Sand and paint to match frame.
17. Flip the door over and caulk edges of the front side frame.





**Rehang the Door
And
Enjoy!**