

**NGC Petite Design-Specialty Flower Show**  
**Showing for Tulsa!**



Tulsa Garden Club  
Established 1922  
 Members: National Garden Clubs  
 Oklahoma Garden Clubs



**1-4 p.m. \* Saturday**  
**April 6, 2024**  
**Open & FREE to Public**

**Tulsa Garden Center**  
 2435 S Peoria AVE

TulsaGardenClub.org \* TulsaGardenClub@gmail.com





**Juried petite design entries of Oklahoma youth and adult designers!**

**An NGC Petite Design Specialty Flower Show**

**Presented by**



**Tulsa Garden Club**  
 gardening • community • education

**Member of:**

**National Garden Clubs, Inc.**

**South Central Region of National Garden Clubs, Inc.**

**Oklahoma Garden Clubs, Inc.**

**Northeast District of Oklahoma Garden Clubs, Inc.**

**Affiliated with the**

**Tulsa Garden Center**

2435 South Peoria Avenue Tulsa, Oklahoma

641.777.3336

**1 – 4 p.m., April 6, 2024**

**Open and free to public**



Tulsa Garden Club  
gardening • community • education

# ***SHOWING FOR TULSA!***

## **Schedule**

### **TABLE OF CONTENTS**

Committee Chairs .....	3
General Rules .....	4
Awards being offered .....	6
Division I Design .....	8
Specific Division I Rules .....	8
Sections and Classes .....	10
Division II Education .....	14
Specific Division II Rules .....	14
Exhibits .....	14
Division III Botanical Arts .....	15
Specific Division III Rules .....	15
Sections and Classes for Botanical Arts Design.....	15
Sections and Classes for Botanical Arts Artistic Crafts.	16
Sections and Classes for Botanical Arts Photography..	18
Division IV Youth Division .....	19
Specific Division IV Rules.....	19
Sections and Classes .....	20
Youth Recycled Sculpture Make-and-Take.....	21
Youth Awards Presentation.....	22

**[TulsaGardenClub@gmail.com](mailto:TulsaGardenClub@gmail.com) \* [TulsaGardenClub.org](http://TulsaGardenClub.org)**

# **SHOWING FOR TULSA!**

## **COMMITTEE CHAIRS**

Club President, Kathi Blazer, [kathiblazer@gmail.com](mailto:kathiblazer@gmail.com) 405-612-5570  
General Show Chair, Rose Schultz, [roses@jswtech.com](mailto:roses@jswtech.com) 641-777-3336  
Awards Chair, Linda Smith, [artshs@gmail.com](mailto:artshs@gmail.com) 405-921-2254  
Clerks Chair, Fleta Haskins, [fleta@tulsaconnect.com](mailto:fleta@tulsaconnect.com) 918-775-1009  
Demonstrations Chair, Kathi Blazer, [kathiblazer@gmail.com](mailto:kathiblazer@gmail.com) 405-616-5570  
Garden Kiosk Co-Chairs

Pamie Murphy, [pamie.brocksmith@att.net](mailto:pamie.brocksmith@att.net) 918-636-9443

Janet Word, [janet.word11@yahoo.com](mailto:janet.word11@yahoo.com) 918-808-4386

Guest Greeter, Phyllis Ogilvie, [pogilvie@gmail.com](mailto:pogilvie@gmail.com) 918-760-6818

Hospitality Chairs

Dyan Condry, [dcondry@sundanceoffice.com](mailto:dcondry@sundanceoffice.com) 918-289-9177

Sherri Hulse, [sjhmom40@aol.com](mailto:sjhmom40@aol.com) 918-629-3938

Judges Chair, Judy Grotts, [judygrotts@cotc.net](mailto:judygrotts@cotc.net) 918-630-1979

Photography Chair, Linda Martileno-Newton, [figaleno@windstream.net](mailto:figaleno@windstream.net)  
918-855-0813

Publicity Chair, Awareness Team, [tulsagardenclub@gmail.com](mailto:tulsagardenclub@gmail.com) 918-625-1161

Schedule Chair, Sue Lovelace, [suelovelace@cox.net](mailto:suelovelace@cox.net) 918-289-3893

Staging/Properties Co-Chairs

Jane Crawford, [janecrawfordberger@gmail.com](mailto:janecrawfordberger@gmail.com) 918-378-0855

Kimberly Thompson, [kimberlyjonas@hotmail.com](mailto:kimberlyjonas@hotmail.com) 210-422-6320

Tally Chair, Brenda Michael-Haggard, [brendamhaggard@gmail.com](mailto:brendamhaggard@gmail.com)  
918-625-1161

## **Design**

Award of Distinction Chair, Jimmy Black, [jimmy\\_black7@hotmail.com](mailto:jimmy_black7@hotmail.com)  
918-269-0999

Designer's Choice Chair, Delores Comfort, [dguncom@cox.net](mailto:dguncom@cox.net) 417-434-3426

Tricolor Chair, Sandy Farris, [sandy@farrist.com](mailto:sandy@farrist.com) 918-378-4808

Table Design Chair, Deb Cramer, [dcramer@cctulsa.com](mailto:dcramer@cctulsa.com) 918-269-7118

## **Education**

Education Entry Chair, Linda Smith, [artshs@gmail.com](mailto:artshs@gmail.com) 405-921-2254

## **Botanical Arts**

BA Design Chair, Judy Weaver, [johnandjudy@ymail.com](mailto:johnandjudy@ymail.com) 918-605-2124

BA Crafts Chair, Jeri Keith, [gatekeeper55@gmail.com](mailto:gatekeeper55@gmail.com) 918-851-5920

BA Photography Chair, Fleta Haskins, [fleta@tulsaconnect.com](mailto:fleta@tulsaconnect.com) 918-775-1009

## **Youth**

Youth Chair, Susan Foust, [foustsu@gmail.com](mailto:foustsu@gmail.com) 918-607-3977

# **SHOWING FOR TULSA!**

## **Schedule**

### **GENERAL RULES**

(These rules apply to the entire show.)

1. This Flower Show conforms to the standards established by National Garden Clubs, Inc. (NGC). The *HANDBOOK FOR FLOWER SHOWS* (HB), 2017 EDITION, with any revisions or corrections listed on the NGC website is the authority for all issues not covered by the schedule, which is THE LAW OF THE SHOW.
2. Entries are open to all members of the Tulsa Garden Club, members of the affiliate clubs of the Tulsa Garden Center, or guest members of Oklahoma Garden Clubs, Inc. and the public, provided they are approved by the Section Chair.
3. Each exhibitor is limited to one entry per class. Entry cards will be provided, filled out and placed in your location by the Show Committee in order of registration for each class.
4. This Schedule and the Exhibitor's Sheets for Design and Botanical Arts are available online at: [www.tulsagardenclub.org](http://www.tulsagardenclub.org) and at each Tulsa Garden Club meeting. Each exhibitor must fill out an Exhibitor's Sheet before exhibits may be placed into classes.
5. **Online registration** is available at the Tulsa Garden Club Website [www.tulsagardenclub.org](http://www.tulsagardenclub.org).
6. Complete procedure for making entries in the Divisions varies and can be found in the Division Rules for each Division.
7. All entries will be accepted beginning Friday, April 5 from noon to 4 p.m. and on Saturday, April 6, 2024, from 8-10 a.m. at the Tulsa Garden Center. Entries are to be removed between 4 and 4:30 p.m. on Saturday, April 6, 2024.

8. Judging will begin at 10:30 a.m., Saturday, April 6, 2024. Judging will be by the NGC Standard System of Awarding, as per the (HB17) and additions found in *The National Gardener*. Final determination for conformance is the judges' responsibility. The decisions of the judges are final. Awards may be withheld if not merited.
9. The General Show Chairs are available during judging for possible consultation. They, along with the Judges and Clerks, are the only personnel allowed on the floor during judging.
10. There must be an emphasis on FRESH plant materials; no artificial plant material is permitted in any exhibit in any division.
11. Table and exhibit space dimensions are expressed by depth by width by height (DxWxH). All tables will be covered with black tablecloths.
12. The Tulsa Garden Club will strive to assure the safety of all items after arrival and placement but is not responsible for any loss or damage to exhibits.
13. No plants on the state endangered species list or on the state noxious plant list will be allowed. Native wildflowers obtained legally may be entered.

For information:

<https://www.fs.usda.gov/wildflowers/invasives/index.shtml>

<https://plants.usda.gov/home/noxiousInvasiveSearch>

[https://www.aphis.usda.gov/plant\\_health/plant\\_pest\\_info/weeds/downloads/weedlist.pdf](https://www.aphis.usda.gov/plant_health/plant_pest_info/weeds/downloads/weedlist.pdf)

## AWARDS

The NGC Standard System of Awarding (HB17, Ch. 1–p.5) is used in all Divisions.

Only one (1) First Place - Blue Ribbon = 90+ Points

Only one (1) Second Place - Red Ribbon = 85+ Points

Only one (1) Third Place - Yellow Ribbon = 80+ Points

One (1) or more Honorable Mention - White Ribbons = 75+ Points

All blue ribbon-winning exhibits and all non-blue ribbon exhibits scoring 90+ points must be signed and dated by an NGC Accredited Judge on the judging panel.

### DESIGN DIVISION TOP EXHIBITOR AWARD

**Award of Design Excellence** (HB17, Ch. 5–p.42) Only one (1) award will be offered to the highest scoring blue ribbon exhibit scoring 95 or more in the entire Design Division entered by one (1) individual. It is a rosette of gold ribbons.

### DESIGN DIVISION SECTION AWARDS

A minimum of four (4) exhibits per class. Only one (1) award will be offered to the highest scoring blue ribbon exhibit scoring 95 or more in each Section.

**Award of Distinction** (HB17, Ch. 5–p.42) All plant material used in the exhibit must be dried and/or treated, but not fresh. It is a rosette of brown ribbons.

**Designer's Choice Award** (HB17, Ch. 5–p.42) Plant material used in the exhibit may be dried, treated dried and/or fresh. It is a rosette of purple ribbons.

**Table Artistry Award** (HB17, Ch. 5–p.43) Award for Functional and Exhibition Tables. It is a rosette of burgundy ribbons.

**Tricolor Award** (HB17, Ch. 5–p.43) All plant material must be fresh. It is a rosette of red, blue and yellow ribbons.

### EDUCATION DIVISION TOP EXHIBITOR AWARD

**Division Award – Educational Top Exhibitor Award** (HB17, Ch.5–p.43) A minimum of two (2) educational exhibits designated as eligible must be present. The exhibit may be the work of an individual or organization. Only one (1) award will be offered per show. It is a rosette of brown and white ribbons.

## **BOTANICAL ARTS DIVISION TOP EXHIBITOR AWARDS**

**Section Awards** Each section must consist of at least three (3) classes with at least four (4) exhibits in each class. Each exhibit must be the work of one (1) individual.

**Botanical Arts Artistic Crafts Award** (HB17, Ch. 5—p.44) It is a rosette of navy blue ribbons.

**Botanical Arts Design Award** (HB17, Ch. 5—p.44) It is a rosette of yellow and orange ribbons.

**Botanical Arts Photography Award** (HB17, Ch. 5—p.45) It is a rosette of black and white ribbons.

## **YOUTH TOP EXHIBITOR AWARDS**

**Youth Top Exhibitor** (HB17, Ch. 5—p.44) One (1) award for exhibits scoring 90+ may be offered and awarded in each of the three (3) age groups in each Section (Design and Photography). It is a rosette of red, white and blue ribbons.

## **RECOGNITION AWARDS**

**Sweepstakes Award** (HB17, Ch. 5—p.46) Only one (1) award offered for Overall Flower Show. It is a rosette of green and white ribbons. It is awarded to the one (1) exhibitor scoring the most points for exhibiting in the Flower Show.

## **SPECIAL TULSA GARDEN CLUB MEMBER AWARDS**

**Denise Caves Creativity Award** Awarded for the highest scoring Creative Design in the Design Division. It is a rosette of green and blue ribbons.

**Edith Bernard Award** Awarded for the highest scoring Design by a novice\* designer in the Design Division. It is a rosette of white ribbons.

**Patty Moore Award** Awarded for the highest scoring Exhibition Table in the Table Artistry Division. It is a rosette of two shades of blue ribbons.

*\*Definition of a novice designer/exhibitor is a Tulsa Garden Club member who has not won a blue ribbon in the named division in a Tulsa Garden Club Flower Show.*

## DIVISION I DESIGN

### “Living on Tulsa Time ”

#### DIVISION I DESIGN RULES

(These rules apply to the Design Division only.)

1. **The NGC exhibit policies are printed in (HB17, Ch.7, p.79-80), exhibiting in the Design Division, NGC Policies and Guidelines (p.28).**
2. Some plant material must be used in every exhibit. This includes fresh and/or dried plant material. Plant material need not be grown by exhibitor.
3. Exhibitor may enter multiple Classes within the Design Division, but only (1) exhibit per class.
4. The exhibit entered in competition must be the work of only one (1) exhibitor and that exhibitor’s name must appear on the entry card/tag.
5. **If the designer is unable to fulfill the assignment, it is the designer’s responsibility to provide a substitute.**
6. If the designer is unavailable to transport and/or set up his/her completed design, a substitute person may enter the exhibit for the designer. The designer may receive exhibiting credit if needed. (Permitted only for completed designs.)
7. Designers may view the show site any day and/or time the Tulsa Garden Center is open.
8. Designers may obtain specific staging materials at any Tulsa Garden Club meeting or by appointment with the show or staging chairs.
9. A minimum of four designs is required in each class.
10. All plant material used in the design must be identified on a card provided by the exhibitor and included with the entry card.
11. When design techniques are required, they must be listed on a card. The exhibitor is required to conform to the stated descriptions and limitations of the design type if named in the class. If not named, designers have the freedom to choose Traditional or Creative Style with any design listed.
  - A. Traditional design is based on a single “set pattern” of geometric forms using plant material in a naturalistic manner radiating from one point with space of little importance. Plant material, forms and colors are integrated rather than grouped. For more information, refer to (HB17, Ch.7, p.71-72).
  - B. Creative design is not bound by traditional patterns or styles. They are designs with a relationship between space



- and form. For more information, refer to (HB17, Ch. 7, p. 71-72).
12. A single flower is not a design. Container grown plants are fresh plant material and are permitted in the Design Division when appropriate, but they are never considered floral designs.
  13. Landscapes, scenes or anything representing an actual item of clothing, person, animal, etc. are not considered acceptable in the Design Division. (NOTE: Refer to the Botanical Arts Division for exhibiting these items).
  14. Religious symbols used in a design must be displayed in a respectful manner.
  15. Advanced registration with the Design Entries Chair is required by April 2, 2024. Online registration is available at [TulsaGardenClub.org](http://TulsaGardenClub.org).
  16. Plant material and non-plant material permitted and not permitted in the Design Division are printed in (HB17, Ch.7, p.80-81).
  17. Dried plant material may be treated to alter its exterior appearance.
  18. Painting, flocking, glittering or dyeing of fresh plant material in any manner is **not permitted**. (All other physical embellishments of fresh plant material are permitted, such as clipping stripping, bending or otherwise manipulating.)
  19. **Artificial** flowers, foliage, fruits and vegetables are **not permitted**. (Artificial is defined as “imitation” or a “copy”, handcrafted or manufactured to represent and/or appear as real plant material.) Silk, plastic or other imitation plant material is **not permitted**. Manufactured items simulating plant material are **not permitted**. (Examples: singing/speaking flowers, motorized flowers and metallic flowers and foliage, fountains featuring metal cattails and/or waterlilies.)
  20. American and other national flags are **not permitted**.
  21. Living members of the animal kingdom and/or taxidermal representations are **not permitted**.
  22. Staging panels (backgrounds) and Underlays **are optional but suggested** unless stated otherwise in the class description.
  23. Rules for Design Types, Advanced Design Types, Table Designs and Table Appointments are printed in (HB.17, Ch.7, p.29).
  24. Designer is on his/her honor that the design being entered has not been previously entered or judged in an NGC Standard Flower Show.

25. The Scale of Points for all Designs is printed in (HB17, Ch.14, p.130).

***All Designs Scale of Points***

Conformance to Type	7 points
Conformance to Schedule Requirements	7 points
Design Principles	48 points
Selection of Components	8 points
Organization of Components	8 points
Expression	8 points
Distinction	<u>14 points</u>
TOTAL	100 points

**SECTION A Award of Distinction Designs**

**“Historical Tulsa”**

**Section Chair Jimmy Black**

Jimmy\_black7@hotmail.com 918-269-0999

All blue ribbon winners scoring 95 or more are eligible for the **Award of Design Excellence** and the one (1) **Award of Distinction**. All designs in this Section are eligible to receive the **Denise Caves Creativity Award** and the **Edith Bernard Award (novice exhibitor)**. All plant material used in the exhibit must be dried and/or treated, but **not** fresh.

**Class 1 “Reconciliation Park”**

**4 entries**

**Armature Design** (HB17, Ch.7, p.77) A Creative Design featuring an Armature Form (grid-like structure) created by the exhibitor. The Armature Form is self-supporting and plant material and other components are supported by the Armature. The Armature Form may be made from plant and/or man-made material and is greater in proportion than the other components combined. Design not to exceed 12” in any direction. Staged on 60”x30” round table covered with black tablecloth.

**Class 2 “The Praying Hands”**

**4 entries**

**Creative Design** (HB17, Ch.7, p.71-72) not to exceed 6” in any direction. Using a minimum of plant material and other optional components, the line may be straight, curved or a combination. There may be one (1) or more points of emergence and focal areas. Staged on 30”x36” round bistro table covered with black tablecloth.

### **Class 3 “Tulsa’s Art Deco”**

**4 entries**

**Angular Design** (HB17, Ch.7, p.73) is a Creative Design emphasizing strong angles that may be acute, obtuse, reflex, right angles or a combination of angles. Design is not to exceed 9” in any direction. Staged on black 14”x14”x40” pedestal.

## **SECTION B Designer’s Choice Designs**

### **“Loving Tulsa Landmarks”**

**Section Chair Delores Comfort**

[dguncom@cox.net](mailto:dguncom@cox.net) 417-434-3426

All blue ribbon winners scoring 95 or more are eligible for the **Award of Design Excellence** and the one (1) **Designer’s Choice Award**. All designs in this Section are eligible to receive the **Denise Caves Creativity Award** and the **Edith Bernard Award (novice exhibitor)**. Plant material used in the exhibit may be dried, treated dried and/or fresh. Exhibitor has freedom to choose other components within NGC policies.

### **Class 4 “The Meeting at Council Oak”**

**4 entries**

**Creative Design** (HB17, Ch.7-p.71-72) not to exceed 9” in any direction. Using a minimum of plant material and other optional components, the line may be straight, curved or a combination. There may be one (1) or more points of emergence and focal areas. Staged on 48”x30” round table covered with black tablecloth.

### **Class 5 “The Golden Driller”**

**4 entries**

**Creative Line-Mass Design** (HB17, Ch.7, p.74) is a Creative Design similar to Creative Line design except additional plant material and/or other optional components are included to add strength and depth to the design. Design is not to exceed 12” in any direction. Staged on 60”x30” round table covered with black tablecloth.

## **Class 6 “The Center of the Universe”**

**4 entries**

**Horizontal Design** not to exceed 6” in any direction. Using a minimum of plant material and other optional components, the design is arranged sideways, creating a parallel line to the horizon, with movement left to right or right to left. Design is wider than it is tall. Staged on 30”x36” round bistro table covered with black tablecloth.

## **SECTION C Tricolor Designs**

### **“Tulsa’s Beauty”**

**Section Chair Sandy Farris**

[sandy@farrist.com](mailto:sandy@farrist.com) 918-378-4808

All blue ribbon winners scoring 95 or more are eligible for the **Award of Design Excellence** and the one (1) **Tricolor Award**. All designs in this Section are eligible to receive the **Denise Caves Creativity Award** and the **Edith Bernard Award (novice exhibitor)**. All plant material **must be fresh**. Non-plant material may be included.

## **Class 7 “Game Day at Driller Stadium”**

**4 entries**

**Creative Design** (HB17, Ch.7-p.71-72) not to exceed 12” in any direction. Using a minimum of plant material and other optional components, the line may be straight, curved or a combination. There may be one (1) or more points of emergence and focal areas. Staged on 60”x30” round table covered with black tablecloth.

## **Class 8 “Art in Bloom”**

**4 entries**

**Creative Design** (HB17, Ch.7-p.71-72) not to exceed 9” in any direction. Using a minimum of plant material and other optional components, the line may be straight, curved or a combination. There may be one (1) or more points of emergence and focal areas. Exhibitor will interpret their concept of a photo supplied by staging. Photo is printed on the back cover of this schedule. Staged on 48”x30” round table covered with black tablecloth.

## **Class 9 “Viewing the Rose Garden”**

**4 entries**

**Creative Design** (HB17, Ch.7-p.71-72) not to exceed 6” in any direction. Using a minimum of plant material and other optional components, the line may be straight, curved or a combination. There may be one (1) or more points of emergence and focal areas. Staged on 30”x36” round bistro table covered with black tablecloth.

## SECTION D Table Designs

### “Set to Celebrate”

#### Section Chair Deb Cramer

[dcramer@cctulsa.com](mailto:dcramer@cctulsa.com) 918-269-7118

All blue ribbon winners scoring 95 or more are eligible for the **Award of Design Excellence** and the one (1) **Table Artistry Award**. All designs in this Section are eligible to receive the **Denise Caves Creativity Award** and the **Edith Bernard Award (novice exhibitor)**. Plant material used in the exhibit may be dried, treated dried and/or fresh. Exhibitor has freedom to choose other components within NGC policies. Table appointments are designer's choice but should be in proportion to overall design. A decorative unit (completed floral design) **must** be included.

#### **Class 10 “Picnic in the Park” 4 entries**

**Exhibition Table** (HB17, Ch.7– p.76) **Not** meant to be functional. A Creative Design artistically suggesting the service of food with no requirements as to the type or number of table appointments. Plant material must be used as needed for the overall design. Exhibit is to be placed on a black 14”x14”x40” pedestal. Underlay is not to exceed 12”x12”. Staging panel not allowed.

#### **Class 11 “Rib Crib Barbecue” 4 entries**

**Exhibition Table** (H17, Ch.7-p.76) **Not** meant to be functional. A Creative Design artistically suggesting the service of food with no requirements as to the type or number of table appointments. Plant material must be used as needed for the overall design. To be designed on a panel not to exceed 8 1/2”x11” and to be placed on an easel provided by staging. Easels staged on 60”x30” round table covered with black tablecloth.

#### **Class 12 “Wedding at the Mansion” 4 entries**

**Exhibition table** (HB17, Ch.7, p.76) **Not** meant to be functional. A Creative Design artistically suggesting the service of food with no requirements as to the type or number of table appointments. Plant material must be used as needed for the overall design. Exhibits to be placed in a 6”x10”x12” niche created by designer. (Niche is a staging panel consisting of a background and side panels.) Staged on 60”x30” round table covered with black tablecloth.

## DIVISION II EDUCATION

### “Saving Tulsa’s Environment”

Entry Chair Linda Smith

[artshs@gmail.com](mailto:artshs@gmail.com) 405-921-2254

## DIVISION II EDUCATION RULES

(These rules apply to the Botanical Arts Division only)

1. **The NGC Exhibit Policies are printed in (HB17, Ch.8, p.85).**
2. Education Exhibits may be the work of one (1) individual.
3. For an ***Educational Top Exhibitor Award*** an exhibit must occupy a minimum of six (6) square feet of surface area in a Petite Design Specialty Flower Show.
4. Exhibits will be staged on one half of 30”x96”x30” rectangular table covered with black tablecloth.
5. Some plant material is **required**.
6. Exhibits are competitive.
7. Advance registration with the Education Entry Chair is required by February 1, 2024.
8. The Scale of Points for Education Exhibits is printed in (HB17, Ch.14, p.130).

### **Educational Exhibits Scale of Points**

Educational Value – Interest to Viewer	25 points
Clear, concise presentation	15 points
Adequate signage	10 points
Conforms to NGC Objectives	10 points
Staging – Craftsmanship/Technique	10 points
Distinction	10 points
Creativity and Expression	<u>20 points</u>
<b>TOTAL</b>	<b>100 points</b>

### **Eligible for Educational Top Exhibitor Award**

#### **Exhibit 1 “Alternatives to Using Floral Foam”**

Display shows some mechanics for designers to replace floral foam usage.

#### **Exhibit 2 “Recycled for Play”**

An assemblage of discards that are recyclable can create a sculpture.

## DIVISION III BOTANICAL ARTS

### “Take Me Back to Tulsa”

## DIVISION III BOTANICAL ARTS RULES

(These rules apply to the Botanical Arts Division only)

1. **The NGC Exhibit Policies are printed in (HB17, Ch.10, p.93-95).**
2. All Botanical Arts Design and Artistic Crafts exhibits must contain some fresh and/or dried plant material.
3. **NO** artificial plant material is permitted in any exhibit.
4. Due to staging requirements, **all Botanical Arts entries need to be registered by April 3, 2024.**

### Section A Botanical Arts Design

#### “Form and Function”

Section Chair Judy Weaver

[johnandjudy@ymail.com](mailto:johnandjudy@ymail.com) 918-605-2124

#### Botanical Arts Design Rules

1. **The NGC Exhibit Policies for Botanical Arts Design are printed in (HB17, Ch.10, p.93-94).**
2. All Botanical Arts Design exhibits must contain some fresh and/or dried plant material
3. **No** artificial plant material permitted in any exhibit.
4. Components in plant material and other found objects.
5. Staged in upright position on wall, easels or other vertical structures.
6. **All Exhibits must include a card listing all plant material used in the design.**

7. Eligible for the **Botanical Arts Design Award** (HB17, Ch.5, p.44). It is a rosette of yellow and orange ribbons.
8. Judged by the Design Scale of points printed in (HB17, Ch.14, p.130).

***All Designs Scale of Points***

Conformance to Type	7 points
Conformance to Schedule Requirements	7 points
Design Principles	48 points
Selection of components	8 points
Organization of components	8 points
Expression	8 points
Distinction	<u>14 points</u>
<b>TOTAL</b>	<b>100 points</b>

**Class 1 “BOK Arena”**

**Only 4 entries**

**Hanging Design** (HB17, Ch.10, p.93-94) A wreath not to exceed 12” in any direction, suspended and freely moving. To be hung inside black 5 1/2”x14”x14” frame placed on black 11”x22”x36” frame furnished by staging.

**Class 2 “Glenn Pool Oil Strike”**

**4+ entries**

**Collage** (HB17, Ch.10, p.93) An abstract design created on a background panel 8 1/2 “ x 11” with a dominance of components attached in a non-realistic arrangement. Components may include plant material and other found objects. Staged on easel furnished by staging on 60”x30” round table covered with black tablecloth.

**Class 3 “The Gathering Place”**

**4+ entries**

**Plaque** (HB17, Ch.10, p.93) A design organized in a natural manner composed of plant material and other optional components attached to a 8 1/2 “ x 11” background panel serving as the frame of reference. Staged in an upright position on easel furnished by staging on 60”x30” round table covered with black tablecloth.

**Section B Botanical Artistic Crafts**

**“A Night Out”**

**Section Chair Jeri Keith**

[gatekeeper55@gmail.com](mailto:gatekeeper55@gmail.com) 918-851-5920

1. **The NGC Exhibit Policies for Botanical Arts Design are printed in (HB17, Ch.10, p.94-95).**



2. No artificial, endangered or locally invasive plant may be used.
3. A card listing plant material must be included with all artistic craft entries.
4. Eligible for the **Botanical Arts Artistic Crafts Award** (HB17, Ch.5, p.44). It is a rosette of navy blue ribbons.
5. Artistic Crafts are objects with a function. They may be artistically pleasing but were not created solely for their artistic value. They serve a purpose and can be labeled as a specific object.
6. Judged by the Artistic Crafts Scale of Points printed in (HB17, Ch.14, p.131).

***Artistic Crafts Scale of Points***

Conformance	14 points
Design Principles	48 points
Craftsmanship	12 points
Technique	12 points
Distinction	<u>14 points</u>
TOTAL	100 points

**Class 4 “Cain’s Ballroom” 4+ entries**

**Earrings** (HB17, Ch.10, p.95) Pair of earrings must be ready-to-wear with French wire backs. Non-plant material may be used for construction but must not show. Clipping, cutting or shaping of material is allowed. Staged on 30”x36” round bistro table covered with a black tablecloth.

**Class 5 “Caravan Ballroom” 4+entries**

**Cornhusk Doll** (HB17, Ch.10, p.95) Craft a doll using cornhusks as plant material. Completed doll may not be more than 9” tall. Non-plant material may be used for construction but must not show. Staged on 30”x36” round bistro table covered with black tablecloth.

**Class 6 “Dining at the Mayo Hotel” 4+ entries**

**Placemat** (HB17, Ch. 10, p.95) A decorated place mat 8 1/2”x 11”. Non-plant material may be used for construction but must not show. Staged on 60”x30” round table covered with black tablecloth.

## Section C Botanical Arts Photography

### “Green Country Shows”

Section Chair Fleta Haskins

[fleta@tulsaconnect.com](mailto:fleta@tulsaconnect.com) 918-775-1009

### Botanical Arts Photography Rules

1. **The NGC Exhibit Policies are printed in (HB17, Ch.10, p.95-96).**
2. Classes are open to all photographers regardless of skill level.
3. Exhibit must be the work of one (1) individual under whose name it is registered.
4. An exhibitor may enter as many classes as desired but only one exhibit per class.
5. Photographs being entered cannot have been previously entered or judged in an NGC Flower Show.
6. All exhibits must relate to horticulture, gardening, design or other NGC goals, objectives and/or initiatives.
7. All entries must be printed as 5”x7” images and mounted on foam core cut to 8”x10” with a mat of any color—no frames allowed. Either portrait or landscape orientation is acceptable.
8. Entries may be black and white or color.
9. Images will be displayed on 30”x96”x30” tables covered with black tablecloths against a white wall. Risers 12”x96”x12” covered with black tablecloths will be placed on the tables to allow the photographs to be displayed at eye level.
10. Exhibitors are encouraged to label photographed plant material, preferably with current scientific designation.
11. Creative techniques including color or clarity enhancement, removal of part of the image, cropping, combining images or distorting the original subject must be the work of the exhibitor.
12. Information to include on the back of the foam core: name address, phone, email, class number and class name. The top of the photograph must be indicated.
13. Eligible for the Botanical Arts Photography Award (HB17, Ch.14, p.131). It is a rosette of black and white ribbons.

14. Judged by the Photography Scale of Points is printed in (HB17, Ch.14, p. 31).

**Photography Scale of Points**

Conformance	5 points
Interpretation of Class Title	10 point
Composition	25 points
Artistry/Creativity	25 points
Technical Achievement	25 points
Distinction/Impact (WOW Factor)	<u>10 points</u>
TOTAL	100 points

**Class 7 “Turkey Mountain Flora” 4+ entries**

A Macro photograph of a flower. A Macro photograph is an extreme closeup image in which the subject is greater than life size.

**Class 8 “Tulsa Churches” 4+ entries**

A photograph of any church located in Tulsa area.

**Class 9 “Driving on Route 66” 4+ entries**

An unusual perspective on a familiar subject.

**DIVISION IV YOUTH**

**“Through My Lens”**

**Division Chair Susan Foust**

[foustsu@gmail.com](mailto:foustsu@gmail.com) 918-607-3977

1. **The NGC Exhibit Policies are printed in (HB17, Ch.9, p.87-88).**
2. Youth Top Exhibitor Award may be offered to the exhibit with a minimum score of 90. It is a rosette of red, white and blue.

**SECTION A YOUTH DESIGN RULES**

(These rules apply to Youth Design only.)

1. All design exhibits must be created solely by one (1) exhibitor.
2. Some plant material must be used in every exhibit. This includes fresh and/or dried plant material. Plant material need not be grown by exhibitor.
3. A single flower is not a design.
4. Dried plant material may be treated to alter its exterior appearance.

5. **Artificial** flowers, foliage, fruits and vegetables are **not permitted**.
6. American and other national flags are **not permitted**.
7. All plant material used in the design must be identified on a card provided by the exhibitor and included with the entry card.
8. Rules for Design Types are printed in (HB17, Ch.7).
9. All Designs Scale of Points applies. See p.10 of this Schedule.

## **Section A Youth Design**

### **“Tulsa State Fair”**

**Creative or Traditional Design**—All plant material is designer’s choice (choice of fresh or dried plant material or a combination of both.) Staged on 60”x30” round table with black tablecloth, viewed from all sides. Staging panel (background) and underlay optional, but suggested. Exhibit not to exceed 12” in any direction.

**Class 1** Elementary Grades

**Class 2** Middle School Grades

**Class 3** High School Grades

## **SECTION B YOUTH BOTANICAL ARTS PHOTOGRAPHY RULES**

1. Exhibit must be the work of one (1) individual under whose name it is registered.
2. All entries must be printed as 5”x7” images and mounted on foam core cut to 8”x10” with a mat of any color—no frames allowed. Either portrait or landscape orientation is acceptable.
3. Entries may be black and white or color.
4. Professional printing and matting is permitted.
5. Information to include on the back of the foam core: name, address, phone, email, class number and class name. The top of the photograph must be indicated.
6. Images will be displayed on 30”x96”x30” tables covered with black tablecloths against a white wall. Risers 12”x96”x12” covered with black tablecloths will be placed on the tables to allow the photographs to be displayed at eye level.

7. Photography Scale of Points applies. See p.19 of this Schedule.

## **Section B Youth Botanical Arts Photography**

### **“Don’t Fence Me In”**

A photograph of any kind or type of fence found in Green Country. **Some plant material must be visible in photograph.**

**Class 4** Elementary Grades

**Class 5** Middle School Grades

**Class 6** High School Grades



## **Another Event for Youth!!**

### **RECYCLED SCULPTURE MAKE-AND-TAKE**

From 1-3 p.m. student participants will get a “head start” for a National Garden Club contest! Each student can make a creation out of found materials to recycle them into a work of art for the next annual sculpture contest. This contest encourages students to keep our planet green and get involved with saving the environment.

Students in grades 4 through 8 are eligible to create a sculpture of recyclable, reused, and reduced materials.

An application form due February 1, 2025 will be distributed.

### **RECYCLED SCULPTURE RULES**

1. The sculpture is limited in width to 8 1/2”x11”.
2. Height should be proportional to width.

#### ***Scale of Points***

Creative use of materials and self expression 60%

Description of sculpture & materials used 30%

Craftsmanship and technique 10%

TOTAL 100%

For information see p.14, Education Exhibit 2 of this Schedule

[ngc-youth-recycled-sculpture-contest-winners-2022.pdf](https://www.gardenclub.org/ngc-youth-recycled-sculpture-contest-winners-2022.pdf)

[\(\[gardenclub.org\]\(https://www.gardenclub.org\)\)](https://www.gardenclub.org)

## **Special Youth Awards**

**2 p.m.**

Young gardeners and artists, elementary through high school, will be recognized for entries and awards through National, Regional, State and District contests.

## **People's Choice**

Ballots will be available for visitors to select favorite entries in each Division. Winning exhibits will be announced on [tulsagardenclub.org](http://tulsagardenclub.org) and on [Facebook](https://www.facebook.com/tulsagardenclub).

## **Garden Kiosk**

### **Garden Kiosk Co-Chairs:**

Pamie Murphy, [pamie.brocksmith@att.net](mailto:pamie.brocksmith@att.net) 918-636-9443

Janet Word, [janet.word11@yahoo.com](mailto:janet.word11@yahoo.com) 918-808-4386

Garden Club items will be for sale in the lobby of the Tulsa Garden Center. It's a perfect time to purchase gifts or gardening supplies you will need for the upcoming garden season.

## **Education Demonstrations**

### **Demonstrations Chair Kathi Blazer**

[kathiblazer@gmail.com](mailto:kathiblazer@gmail.com) 405-612-5570

**3:30 p.m.**

**Drawing for Door Prizes!!! (Must be present to win.)**



## Tulsa Garden Club

gardening • community • education

### ***Planting Oklahoma: Let's Think Global and Plant Local!***

Oklahoma's oldest and largest garden club has beautified Tulsa since 1929:

providing plants and ongoing support of the region's historic rose garden through Rose Fund

helping establish Tulsa Garden Center, other clubs/organizations, along with gardening education programs, resources, networking

staging public flower shows as horticultural, floral design and botanical arts education funding horticulture and landscape architecture through gardening education partners including OSU, TCC, Conner Correctional Center

#### **Vision**

*To engage the community through gardening education.*

#### **Mission**

*To embrace civic and environmental responsibilities by providing education, resources and networking to promote the love of gardening.*

[www.TulsaGardenClub.org](http://www.TulsaGardenClub.org) \* [TulsaGardenClub@gmail.com](mailto:TulsaGardenClub@gmail.com) \* 918.625.1161

***Everyone can grow in our garden!***

**JOIN\* US!** In-person and virtual education, networking and fundraising events for Members and Guests (@Tulsa Garden Center/Woodward Park unless noted):

**May 6 *Planting for Pollinators***

**May 11 *Tulsa Heart & Soil 73rd Annual Garden Tour***, Midtown Tulsa

Tickets via [Eventbrite](#)

**June 2-8 *National/Oklahoma Garden Week***

**June 3 *Dining Global, Honoring Local Member Appreciation***, Ti Amo, Reservation Required

\*\$50 Member dues payable in March for upcoming Club year.



Tulsa Garden Club is a member of Oklahoma Garden Clubs and the world's largest gardening community, National Garden Clubs.

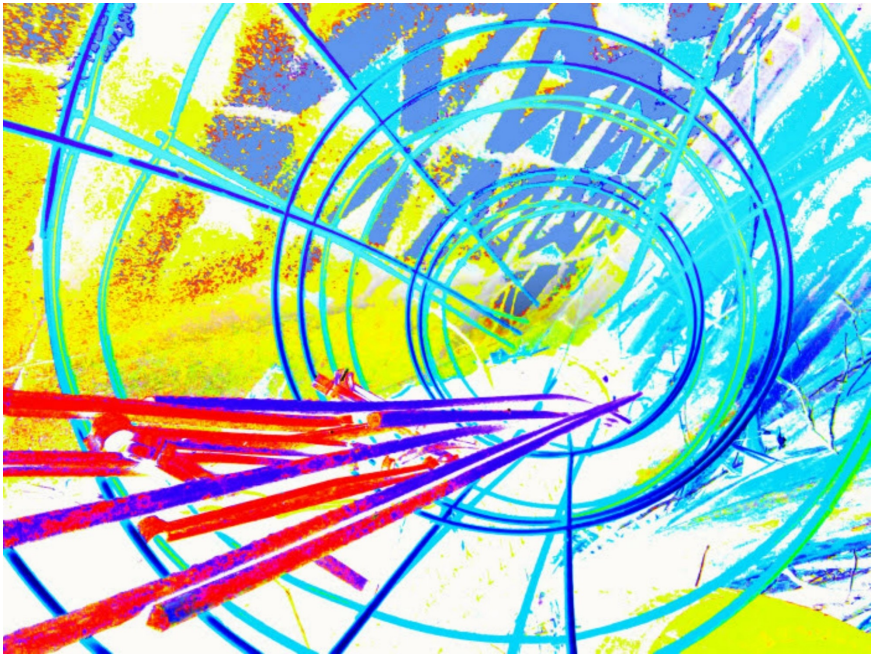
***Showing for Tulsa!***

**Photograph to interpret for *Showing for Tulsa!***

**Design Division I “Living on Tulsa Time”**

**Section C “Tulsa’s Beauty”**

**Class 8 “Art in Bloom”**



*Cages*

Susan Palmer Foust, Member since 2022

***Showing for Tulsa!*** further demonstrates Tulsa Garden Club’s commitment to gardening education, conservation and environmental issues for nurturing the beauty and resources of the earth in gardeners of all ages.

**[TulsaGardenClub@gmail.com](mailto:TulsaGardenClub@gmail.com) \* [TulsaGardenClub.org](http://TulsaGardenClub.org)**