



HOW TO MEASURE YOUR SPACE



SKETCH THE ROOM

Roughly sketch your room noting where the windows, doors, and fixed furniture pieces are located. This does not need to be pretty or to scale, the measurements just need to be accurate.



GET YOUR TAPE MEASURE

The longer the tape measure, the better. Ideally, 25' is the minimum yours should go so you can measure a whole room easily.



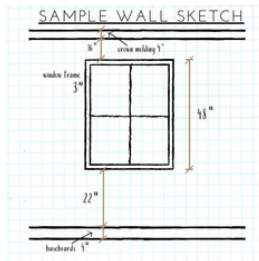
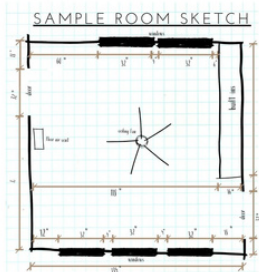
WALLS, WINDOWS, & DOORS

First, measure the general length and width of the room with the walls. Then measure doors, windows, and anything built-in. These dimensions should include their distance from the floor and ceiling. SEE SAMPLE WALL SKETCH



DETAILS

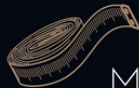
Measure and note locations of, and distance between, outlets, light switches, thermostats, air vents/returns, baseboards, crown molding, light fixtures, etc.



<https://gritinteriors.ca/>



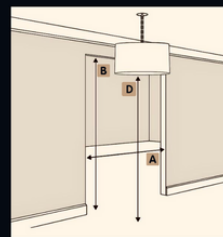
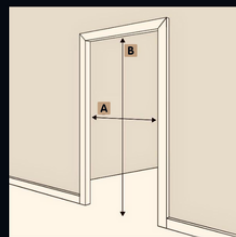
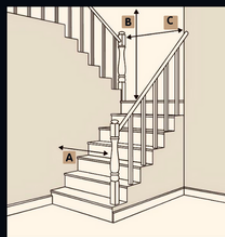
Grit Interiors



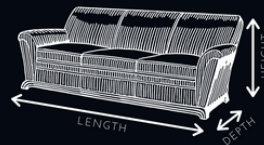
MEASURING GUIDE



products cannot be returned or exchanged due to fit issues in desired space or delivery path.



- WHEN MEASURING DOORWAYS, BE SURE TO MEASURE THE **A** WIDTH AND **B** HEIGHT INSIDE YOUR DOOR FRAME. IF YOUR DOOR DOES NOT OPEN WIDE ENOUGH, YOU MAY WANT TO HAVE IT REMOVED FROM ITS HINGES PRIOR TO DELIVERY.
- IN STAIRWELLS, BE SURE TO TAKE **C** HANDRAILS OR POSTS INTO CONSIDERATION.
- FOR HALLWAYS, CHECK FOR **D** LOW-HANGING LIGHT FIXTURES OR ARCHITECTURAL DETAILS THAT CAN IMPEDE YOUR DELIVERY.
- IF AN ELEVATOR IS REQUIRED TO REACH YOUR APARTMENT OR CONDOMINIUM, YOU WILL NEED TO MEASURE THE ELEVATOR DOORWAY AND INTERIOR.



REMINDER

Measuring all areas of the delivery path to ensure the right fit is the responsibility of the consumer. No returns or exchanges will be accepted for issues pertaining to fit.