



1751 Goodrich Ave, Winter Park FL 32789

4 BEDROOMS / 3.5 BATHROOMS / 2,170 SF LIVING /

2 CAR-GARAGE / 0.14 ACRES LOT

www.1751Goodrich.com

STATE-OF-THE-ART technology, TOP-OF-THE-LINE finishes, attention to DETAIL, and centrally LOCATED in historic WINTER PARK is where you will find this 2019 fully renovated, 4 bed, 3.5 baths, 2-car garage, 2-story home. The first-floor open concept floor plan combines indoor living, dining, and outdoor entertaining space harmoniously. Showstopping large windows, a wall of glass sliders, and a stone accented gas fireplace are just a few of the many highlights found throughout. The spacious kitchen features a large island (seating for 6), exotic quartz countertops, high-gloss cabinets w/slow shut doors & drawers, Thermador 48" commercial-grade 6-burner gas range, hood, refrigerator, Bosh dishwasher, and remote-control lights with full color changing LEDs. An ensuite bedroom that can also serve as an office or flex-space, laundry, and powder room complete first floor living. A sitting nook, 2 bedrooms with an adjoining full bathroom, are located upstairs with the Master Suite. A large balcony with stunning glass railing is the highlight of the bedroom and also features his and her closets, master bath with cool contemporary lines and fixtures with designer tile, separate soaking tub, and dual vanities featuring quartz countertops. Outdoor entertaining includes a fenced and private yard, weatherproof Trex decking, and fully equipped summer kitchen with never-been-used-grill, refrigerator, and hood. Other notable home features include: 10' ceilings up and down, level 5 smooth walls (garage too!), 6 panel solid wood modern doors, aluminum windows, PEX plumbing, spray foam insulation, remote-controlled blinds throughout, video monitoring, 6" gutters with aluminum caps. Excellent A+ rated schools, minutes to Winter Park Hospital, Park Avenue, legendary Rollins College, museums, art galleries, shopping, restaurants, and major highways put this home at the top of the list.

Offered at

\$835,000

Subdivision	Sylvan Heights
HOA	NONE
Land	0.14 Acre Lot Fully Fenced
Indoors	<ul style="list-style-type: none">- Fully Renovated in 2019- Smart Home Technology throughout- Spectacular Open Floor Plan- Combined Indoor & Outdoor Living spaces- White Stone gas fireplace- Oversized Quartz Kitchen Island with sitting of 6- High-gloss custom cabinets with slow shut doors- THERMADOR 48” commercial-grade 6 Burner Gas Range- THERMADOR 48” Professional Chimney Wall Hood- VIKING Refrigerator- BOSH Super Silence Dishwasher- Dinning room combined with Living Room and Kitchen- LG Washer & Dryer

**-Programable LED lights (full color
changing)**

-Double door Pantry with shelves

-Exotic Quartz Countertops throughout

Bosch Silence Plus' 44 dbA Dishwasher

Second Floor Loft Area

Second Floor Master Bedroom with

Balcony

Second Floor Kids Retreat Area Extra

Storage Space

Outdoors

Fully Fenced and private

backyard

Brand New Outdoor Summer

Kitchen

Waterproof Trex decking

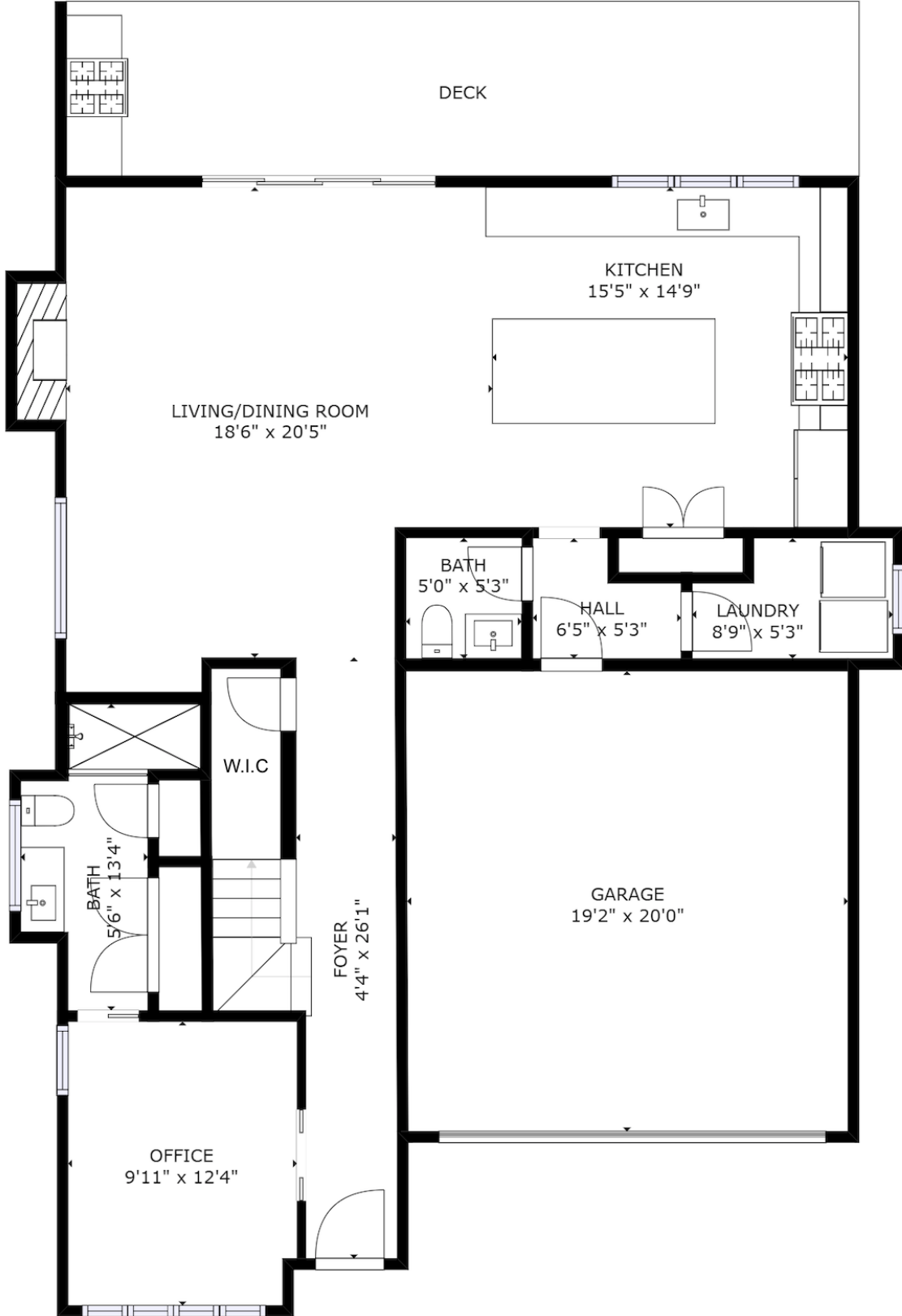
Outdoor Dinning Space

General Details

- **10' ceilings up and down**
- **Level 5 smooth walls (including the garage)**
- **6 panel solid wood 8' doors throughout**
- **Aluminum windows throughout**
- **PEX Plumbing**
- **10 Years warranty AC (9/30/19-9/30/29)**
- **Spray foam insulation throughout**
- **Remote Controlled Blinds throughout**
- **Video Monitoring Front and Back**
- **6" gutters with aluminum caps**
- **Programable and full color changing LEDs
in all bathrooms and kitchen**
- **Matte black upscale door handles, pulls,
faucets and shower heads**

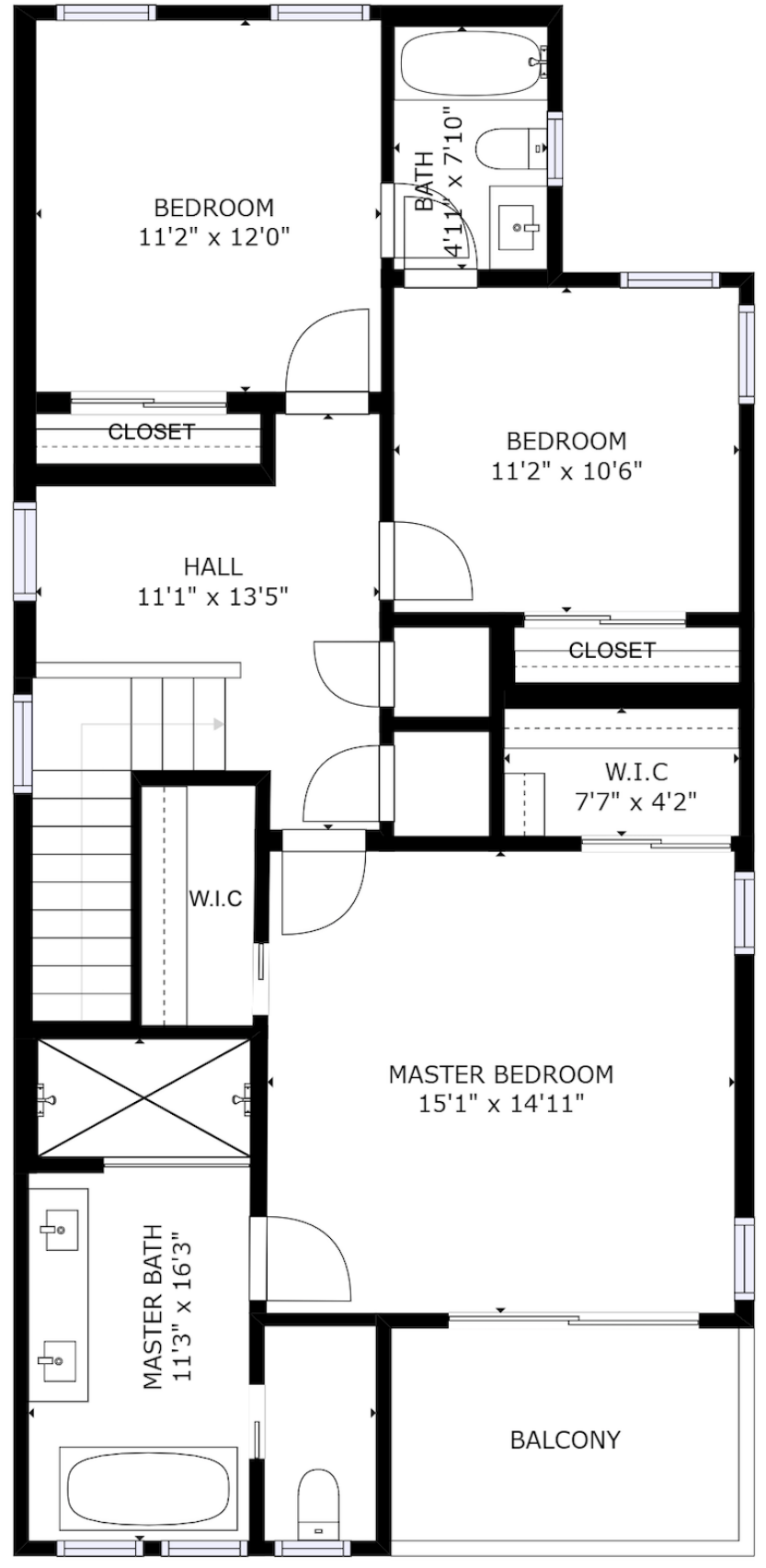
NATOLI & CARP
TEAM
CORCORAN

PREMIER REALTY
Floor Plan



NATOLI & CARP
TEAM
CORCORAN

PREMIER REALTY



NATOLI & CARP TEAM CORCORAN

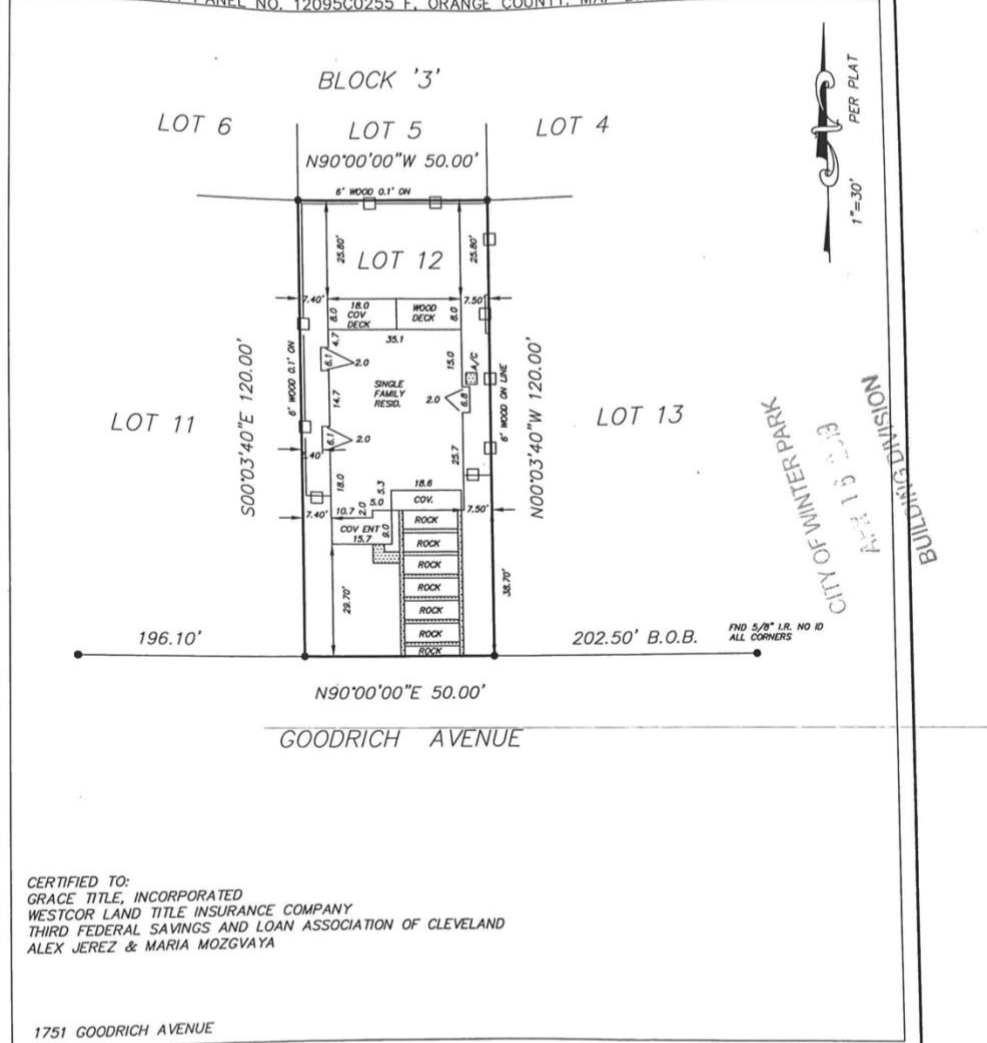
PREMIER REALTY

Survey

BOUNDARY SURVEY

LEGAL DESCRIPTION: LOT 12, BLOCK '3', SYLVAN HEIGHTS, ACCORDING TO THE PLAT THEREOF AS RECORDED IN PLAT BOOK '0', PAGE 2, OF THE PUBLIC RECORDS OF ORANGE COUNTY, FLORIDA.

THE ABOVE REFERENCED PROPERTY IS LOCATED IN ZONE 'X', AREA OF MINIMAL FLOODING, AS PER F.I.R.M. COMMUNITY PANEL NO. 12095C0255 F. ORANGE COUNTY, MAP DATED SEPTEMBER 25, 2009.



CERTIFIED TO:
GRACE TITLE, INCORPORATED
WESTCOR LAND TITLE INSURANCE COMPANY
THIRD FEDERAL SAVINGS AND LOAN ASSOCIATION OF CLEVELAND
ALEX JEREZ & MARIA MOZGVAYA

LEGEND

■ FOUND CONCRETE MONUMENT	E EAST
○ FOUND PROPERTY CORNER	ENT. ENTRANCE
○ SET PROPERTY CORNER	ENCL. ENCLOSURE
○ PERMANENT CONTROL POINT	ESMT. EASEMENT
△ DELTA	FND. FOUND
A/C AIR CONDITIONER	I.P. IRON PIPE
B.L.K. BLOCK	L. IRON ROD
B.O.B. BASIS OF BEARING	L. LENGTH
BRC. BEARING	M. MEASURED
CATV CABLE TELEVISION BOX	N NORTH
CHD. CHORD	N/D NAIL & DISC
C.L.F. CHAIN LINK FENCE	P.C. POINT OF CURVATURE
C.M. CONCRETE MONUMENT	P.C.P. PERMANENT CONTROL POINT
CONC. CONCRETE	P.T. POINT OF TANGENCY
COR. CORNER	P.O.B. POINT OF BEGINNING
COV. COVERED	P.O.C. POINT OF COMMENCEMENT
D. DESCRIBED	P.O.L. POINT ON LINE
D.E. DRAINAGE EASEMENT	P. PLAT

NOTES

R RADIUS / RADIAL	1. BEARINGS ARE BASED ON RECORD PLAT.
S SOUTH	2. THE SURVEY SHOWN HEREON WAS SURVEYED BY THE LEGAL DESCRIPTION PROVIDED BY THE CLIENT.
SAN. SANITARY	3. ROOF OVERHANGS AND FOOTERS HAVE NOT BEEN LOCATED.
SCR. SCREEN	4. NO IMPROVEMENTS OR UNDERGROUND UTILITIES HAVE BEEN LOCATED EXCEPT AS SHOWN.
S.W. SIDEWALK	5. THIS SURVEY IS NOT VALID WITHOUT EMBOSSED SEAL.
T TANGENT	6. THIS SURVEY IS NOT VALID FOR ANY REAL ESTATE TRANSACTIONS 90 DAYS BEYOND THE FINAL SURVEY DATE SHOWN.
TEL. TELEPHONE RISER BOX	7. THE SURVEYOR HAS NOT ABSTRACTED THE LANDS HEREON FOR EASEMENTS OR RIGHT-OF-WAY OF RECORD.
TYP. TYPICAL	8. THERE MAY BE ADDITIONAL RESTRICTIONS THAT ARE NOT RECORDED ON THIS PLAT THAT MAY BE FOUND IN THE PUBLIC RECORDS OF THIS COUNTY.
U.E. UTILITY EASEMENT	9. ALL BEARINGS / ANGLES AND DISTANCES ARE PLAT AND MEASURED UNLESS NOTED OTHERWISE.
U.R.B. UTILITY RISER BOX	
W. WEST	
W.F. WOOD FENCE	
W.M. WATER METER	
CONC. CONCRETE	

HEREBY CERTIFY THAT THIS SURVEY MEETS OR EXCEEDS THE MINIMUM TECHNICAL STANDARDS SET FORTH BY THE FLORIDA BOARD OF LAND SURVEYORS, PURSUANT TO SECTION 5J-17.050 THRU 5J-17.052, FLORIDA ADMINISTRATIVE CODE, PURSUANT TO SECTION 472.08, §72.027, FLORIDA STATUTES.

CHARLES R. DEFOOR, P.L.S. 4189

DATE

PREPARED FOR:
ALEX JEREZ & MARIA MOZGVAYA

PREPARED BY:

CHARLES ROB DEFOOR
PROFESSIONAL LAND SURVEYOR

197 VILLA DI ESTE TERRACE, UNIT 113, LAKE MARY, FLA. 32746

LOT SURVEY DATE:	
FOUNDATION DATE:	
FINAL SURVEY DATE:	11-29-17
DRAWN DATE:	11-29-17
SCALE:	1"=30'
PAGE	1 OF 1
REVISION DATE:	

PRD48JD SGU

48-INCH DUAL-FUEL PRO GRAND® RANGE WITH STEAM AND GRIDDLE

PROFESSIONAL SERIES, COMMERCIAL-DEPTH, PORCELAIN COOKTOP SURFACE



FEATURES & BENEFITS

- ★ - The only professional range on the market with a built-in steam oven and warming drawer
- ★ - 27 Easy Cook® food programs. Pre-programmed modes automatically set the oven temperature and humidity to ensure perfect cooking results
- ★ - Patented Pedestal Star® Burner with QuickClean Base® designed for easy surface cleaning and superior heat spread for any size pan
- ★ - Powerful 22,000 BTU (NG) burner (front right)
- ★ - Precision simmering capabilities as low as 100°F (375 BTU) with 4 ExtraLow® Simmer burners

TECHNICAL DETAILS

Circuit Breaker (A)	50 A
Volts (V)	240 / 208 V
Frequency (Hz)	60 Hz
Plug Type	No Plug
Power Cord Length (in)	Purchase Separately
Energy Source	Gas and Electric
Gas Type	Natural Gas 15 mbar (USA)
Alternative Gas Type	Liquid Gas 27.5 mbar (USA)

SEE PAGE 2 FOR OPTIONAL ACCESSORIES

GENERAL PROPERTIES

Oven Capacity	5.1 / 1.4 cu. ft.
Cooking Modes - Main / Large Cavity	
Bake, Convection Bake, Broil, Convection Broil, Roast, Convection Roast, Self clean, Keep Warm	
Cooking Modes - Small Cavity	
Steam, True Convection, Steam/Convection, Reheat, Proof, Slow Cook, Defrost, Easy Cook®	
Additional Features	
Meat Probe, Sabbath Function, Cook Timer, Kitchen Timer	
Cleaning Type	Self Clean (Primary)
Type of Grate	Continuous Cast Iron
Controls	Metal Knobs and LCD Display
Warming Drawer	1.1 cu. ft. - Low, Med, High
Sealed Burners	Yes

OVEN PERFORMANCE

Bake Power	2,000 W (Lg) / 1,960 W (Sm)
Broil Power	4,000 W (Lg)
Convection Power	2,750 W (Lg)

BURNER PERFORMANCE

Total Number of Cooktop Burners	6 + Griddle
Power of Front Left Burner BTU	18,000 and XLO (NG)
Power of Back Left Burner BTU	18,000 and XLO (NG)
Power of Back Center Burner BTU	18,000 (NG)
Power of Front Center Burner BTU	18,000 (NG)
Power of Center 12" Electric Griddle (W)	1,630 W
Power of Center 12" Electric Grill (W)	N/A
Power of Far Right 12" Electric Griddle (W)	N/A
Power of Back Right Burner BTU	18,000 and XLO (NG)
Power of Front Right Burner BTU	22,000 and XLO (NG)

DIMENSIONS & WEIGHT

Overall Appliance Dimensions (HxWxD) (in)	35 7/8" - 36 3/4" x 47 15/16" x 28 3/4"
Required Cutout Size (HxWxD) (in)	35 7/8" - 36 3/4" x 48" x 24" - 25 1/8"
Adjustable Range Height (in.)	7/8"
Net Weight (lbs)	530 lbs

WARRANTY

Limited Warranty, Entire Appliance, Parts and Labor	2 Year
---	--------

SEE PAGE 2 FOR INCLUDED ACCESSORIES

HPCN48WS

48-INCH CHIMNEY WALL HOOD

PROFESSIONAL® SERIES



FEATURES & BENEFITS

- Professional® Series chimney wall hoods create a crafted, sculpted focal point
- Designed to complete the ultimate cooking system with Thermador ranges
- Powerfully Quiet® system accepts integral, inline, and remote blowers
- Dishwasher-safe stainless steel, commercial-style baffle filters
- Beautiful illumination with multi-level, vivid LED lights

ACCESSORIES (OPTIONAL)

25 ft. Blower Connector Cable - EXTNCB25W

For use with the following inline and remote blowers: VTR630W, VTR1030W, VTR1330W, VTI610W, VTI1010W

Roofplates

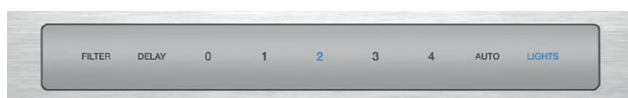
RFPLT600P - For use with 600 CFM remote blower VTR630W

RFPLT1000P - For use with 1000 CFM remote blower VTR1030W and 1300 CFM blower VTR1330W

6" Tall Duct Cover, 48" Wide	CHMHP486W
18" - 35" Tall Duct Cover, 48" Wide	CHMHP48TW
42" - 59" Tall Duct Cover, 48" Wide	CHMHP48XTW

Remote Control Panel

REMCPU - Ability to vertically install on cabinetry or wall to control hood in a convenient location



GENERAL PROPERTIES

Features

Multi-Level LED Lights with Fading Transitions, Automatic Mode, Check Filter Reminder Light, Delay Shut-Off

Operating Mode	Ducted
Maximum CFM	Blower Sold Separately
Number of Speed Settings	4-Stage
Motor Location	Integral / Inline/ Remote
Number of Lights	4
Bulb Type	LED
Total Power of the Lamps (W)	4.8 W
Damper Included	Yes
Grease Filter Material	Washable Stainless Steel
Grease Filter Type	Stainless-Steel Commercial Style Baffle Filter
Home Connect™ (Wi-Fi Enabled)	No

TECHNICAL DETAILS

Watts (W)	See Chart on Page 3
Current (A)	See Chart on Page 3
Volts (V)	120 V
Frequency (Hz)	60 Hz
Plug Type	Fixed Connection, No Plug

DIMENSIONS & WEIGHT

Overall Appliance Dimensions (Width of Canopy Included) (HxWxD) (in)	18" x 47 15/16" x 24"
Height of the Chimney (in)	Duct Covers Sold Separately
Minimum Required Distance Above Gas / Electric Cooking Surface	30" / 30"
Diameter of Air Duct (in) Top	10"
Net Weight (lbs)	88 lbs

BLOWER OPTIONS

Remote Blower (Mounted to Roof or External Wall)	VTR630W - 600 CFM
	VTR1030W - 1000 CFM
	VTR1330W - 1300 CFM
Inline Blower (Mounted Between Kitchen and External Wall)	VTI610W - 600 CFM
	VTI1010W - 1000 CFM
Integrated Blower (Mounted in Hood)	VTN630W - 600 CFM
	VTN1090R - 1000 CFM

WARRANTY

Limited Warranty Parts and Labor	2 Year
----------------------------------	--------



QUIET COOL™ BUILT-IN 48"W. SIDE-BY-SIDE

Viking 5 Series – FDSB

PROCHILL TEMPERATURE MANAGEMENT SYSTEM

- ENERGY STAR Qualified
- Variable Speed DC Overdrive™ Compressor quickly chills food and saves energy
- Single compressor system is one of the quietest, most technologically advanced compressors available
- Electronic controls maintain even temperatures within one degree °F to keep food fresher longer
- Odor Eliminator™ Evaporator removes odors and excess humidity
- Maintenance-free Super Clog Resistant™ Condenser prevents dust and other airborne particles from clogging the condenser

FILTER-FREE FRESHNESS

- EXCLUSIVE Plasmacluster™ Ion Air Purifier uses advanced ion technology to eliminate airborne bacteria, mold, and odors to enhance food preservation
- Functions at 100% capacity and never degrades, never needs replacing, and no maintenance is ever required

THE LATEST IN SPILL CONTROL TECHNOLOGY

- New Spillproof Plus™ Shelves with Nano technology create an invisible barrier to contain spills
- Seamless glass shelves make cleanup easy and maximize usable space
- 3/8" thick tempered glass shelves provide industry-leading durability

LED LIGHTING

- All items are in clear view with bright energy efficient LED lighting from top and sidewalls
- Ramp on theater lighting provides better visibility

SPECIALIZED REFRIGERATION STORAGE

- Two adjustable Humidity Zone™ Drawers with NEW soft-close slides
 - Humidity can be set high for leafy greens or low for fruits and vegetables with skins
- NEW Additional space for large pizza box storage
- Four deli drawers with soft-close slides
- Two in-the-door dairy compartments with covers
- Four Patented (three are adjustable) aluminum door bins securely store heavy items
- Adjustable door stops – 90, 110 and 120 degrees



SPECIALIZED FREEZER STORAGE

- Three adjustable wire shelves for custom storage
- Two slide-out, large capacity wire baskets provide easy storage viewing
- Three patented adjustable aluminum door bins
- Adaptive defrost controls the timing of the defrost periods, instead of an electromechanical defrost timer
 - Extends to 96 hours – improves food storage because the unit defrosts less often
- Factory-installed automatic ice maker features large-capacity ice bucket
- Door alarm sounds and glows to warn that fresh food door and/or freezer drawer have been ajar for three minutes, and that the temperature has risen above normal operating range

MODEL NUMBERS

- FDSB5483 – 48"W. Side-by-Side Refrigerator/Freezer – Custom Panel

ACCESSORIES

- PBIRFTKSS – Flush mount trim kit

DESIGN OPTION

- Custom panel model (FDSB) available to blend seamlessly into cabinetry with locally supplied front panels

WARRANTY

- 2-year full covers complete unit
- 6-year full – sealed refrigeration system
- 90-day full – cosmetic parts such as glass, painted items, and decorative items
- 12-year limited – sealed refrigeration system

24" Custom Panel Dishwasher

Benchmark Series – Custom Panel SHV89PW73N



BOSCH
Invented for life



SHV89PW73N
Custom Panel

39 dBA: The quietest custom panel dishwasher Bosch offers, the near silent operation provides the ultimate peace in your kitchen.

Features & Benefits

The Flexible 3rd Rack with fold down sides adds 30% more* loading area, perfect for utensils and ramekins.

Telescopic glides provide a premium and smooth glide on every rack level.

A clean white light illuminates the interior when the door is open.

Water softener ensures optimal spot-free and shiny dishes.

The AquaStop Plus® premium leak protection system contains leaks through a precisely engineered tub and dual sensor system. If a leak has occurred, it shuts down operation and automatically pumps out water to avoid contact with the floor. So you have the ultimate peace of mind whether you are away or at home.

General Properties	
Number of wash cycles	7
Number of options	7
dBA	39
Drying system	PureDry
Third rack	Flexible Third Rack
Rack adjustability	Rackmatic®
Tub material	Stainless Steel
Control type	TFT Touch Control
Concealed water heating element	Yes
Leak protection system	24/7 AquaStop® Plus
Water softener	Yes
Five-level wash	Yes
ChildLock	No
Special features	Interior Light, Telescopic Glides on all 3 levels, Stainless Steel Toekick, InfoLight®

Efficiency	
Water usage per cycle	2.9
Energy efficiency class	Tier 1
ENERGY STAR® qualified	Yes
Total annual energy consumption (kWh)	269
Total annual water consumption (g)	623.5

Capacity	
Number of place settings	15

Technical Details	
Watts (W)	1440 W
Current (A)	12 Amps
Volts (V)	120 V
Frequency (Hz)	60 Hz
Power cord length - Install length from corner of unit	67" 45"
Minimum water pressure (lb/sin)	7
Length inlet hose (in)	65"
Length outlet hose (in)	75"

Dimensions & Weight	
Overall appliance dimensions (HxWxD)(in)	34 1/16" x 23 9/16" x 21 5/8"
Required cutout size (HxWxD)(in)	34 1/16" x 24" x 24"
Adjustable feet	Yes
Net weight (lbs)	118 lbs

Accessories—Optional	
Junction Box	SMZPCJB1UC
Drain Hose Extension Kit	SGZ1010UC
Dishwasher Softener Salt (4.4 lbs)	SGZ9091UC
Stainless Steel Straight Bosch Bar Handle	SMZ1007UC
Anti-Tarnish Silverware Cassette	SMZ5002UC
Edge Protector + Power Cord Clip Install Kit	SMZEPCC1UC



*Compared to a Bosch dishwasher with 2 racks.



Accessories: To purchase Bosch accessories, cleaners & parts please visit www.bosch-home.com/us/store or call 1-800-944-2904 (Mon to Fri 5 am to 6 pm PST, Sat 6 am to 3 pm PST).

Notes: All height, width and depth dimensions are shown in inches. BSH reserves the absolute and unrestricted right to change product materials and specifications, at any time, without notice. Consult the product's installation instructions for final dimensional data and other details prior to making cutout.

Warranties: Please see Use & Care manual or Bosch website for statement of limited warranty.

For more information on our entire line of products, go to www.bosch-home.com/us or call 1-800-944-2904

© BSH Home Appliances Corporation. All rights reserved. Bosch is a registered trademark of Robert Bosch GmbH.

LAUNDRY

WM9000H_A

5.2 cu.ft. MEGA Capacity w/ On-Door Control Panel & TurboWash®

MAKE LAUNDRY DAY ANYTHING BUT ROUTINE

Can inspiration be found in the laundry room? Look no further than LG's stunning new front load washer. Huge 5.2 cu. ft. Mega Capacity cleans a king-size comforter and a full set of bedding in one fell swoop. And, with the turbocharged power of LG TurboWash®, a normal load gets done up to 30 minutes faster. And, master multi-taskers take note: This LG washer is TWINWash™ compatible, which means you can add the ingenious LG SideKick™ pedestal washer to tackle two loads of laundry—both large and small—all at the same time.

SPECIFICATIONS

- 29" Width
- 5.2 cu. ft. Ultra Capacity with NeveRust™ Stainless Steel Drum
- Direct Drive Motor with 10-Year Limited Warranty
- 1,300 RPM
- 14 Washing Programs
- 5 Temperature Settings (All Cold Rinses)

STYLISH DESIGN

- On-Door Electronic Control Panel with LED Display and Dial-A-Cycle™
- Large Tinted Glass Door with On-Door Controls
- Ergonomically Angled Drum & Door
- Extra Wide Door Opening
- Optional Matching Drawer Pedestal
- Optional Sidekick™ Pedestal Washer (WD200)

INNOVATIONS

- 2016 ENERGY STAR® Most Efficient
- CEE Tier 3
- CSA Sustainability
- TurboWash® 2.0 Technology
- LG Steam Technology
- AAFA Qualified Allergiene™ Cycle
- Smart ThinQ™ (Wi-Fi)
- ColdWash™ Option
- 6Motion™ Technology
- SmartDiagnosis™
- TrueBalance™ Anti-Vibration System
- LoDecibel™ Quiet Operation
- SenseClean™
- Delay Wash (Up to 19 Hours)
- Easy Loading 10° TilTub™



LG TWINWash™ LG SideKick™



KEY FEATURES

TurboWash® Technology

Soccer practice. Groceries. Dinner. Dishes. Shouldn't your laundry move as fast as you? Now it can, with LG's enhanced TurboWash® technology. Powerful high-pressure nozzles save up to 30 minutes per load* —without shortcutting cleaning performance, even on larger loads. Innovation that keeps up with your family calendar? That's not just laundry done fast—it's laundry at the speed of life.

5.2 cu.ft. MEGA Capacity

Towers of towels, piles of sweatshirts, and a mountain of jeans? Go for it. The ultra large capacity (5.2 cu.ft.) tub lets you do more laundry in fewer loads. That's time saved* and sore backs avoided.

Integrated Electronic Control Panel with Dual LED Display

Electronic control panel is integrated into the door for a distinct style plus the intuitive functionality you expect from an LG washer.

WM9000H_A

5.2 cu.ft. MEGA Capacity w/ On-Door Control Panel & TurboWash®

CAPACITY	
Capacity	5.2 cu. ft.
APPEARANCE	
Design Look	Front Control
On-Door Electronic Control Panel with LED Display	•
Touch Buttons	•
Dial-A-Cycle™	•
ENERGY	
2016 ENERGY STAR® Most Efficient	•
CEE Tier	3
WASH PROGRAMS	
No. of Programs	14
Wash Programs	Normal, Perm. Press, Delicates, Speed Wash, TubClean™, Sanitary, Allergiene™, Heavy Duty, BrightWhites™, Towels, Rinse+Spin, Download, Jumbo Wash, Bedding
No. of Options	13
Options	Prewash, Delay Wash, Extra Rinse, Child Lock, ColdWash™, FreshCare™, Steam, TurboWash™, Custom Program, Drum Light, Smart Grid, Remote Start, Wi-Fi Connect
No. of Wash/Rinse Temps	5
Spin Speeds	Extra Hot (1,300 max.), High, Medium, Low, No Spin
No. of Water Levels	Automatically adjusts to the size of load
No. of Soil Levels	5
FABRIC CARE FEATURES	
TurboWash® 2.0 Technology	•
Steam Technology	•
Allergiene™ Cycle	•
Sanitary Cycle	•
ColdWash™ Option	•
SenseClean™ System	•
CONVENIENCE FEATURES	
TrueBalance™ Anti-Vibration System	•
4 Tray Dispenser	Prewash, Main Wash (with liquid detergent cup), Bleach, Fabric Softener
LoDecibel™ Quiet Operation	•
End of Cycle Signal	•
LoadSense	•
Child Lock	•
Auto Suds Removal	•
Forced Drain System	•
Leveling Legs	4 Adjustable Legs
SmartDiagnosis™	• (v 3.0)
Smart ThinQ™ (Wi-Fi)	Smart Grid Ready, Smart Access, Smart Adapt, Energy Monitoring, Laundry Starts
MOTOR AND AGITATOR	
Motor Type	Inverter Direct Drive Motor
Motor Speed	Variable
Max RPM	1,300
Axis	Horizontal

MATERIALS AND FINISHES	
NeveRust™ Stainless Steel Drum	•
Cabinet	PCM
Control Panel	Plastic
Top Plate	Painted
Door Rim	Glass/Chrome
Door Cover	Dark Black Tinted Square Cover
Door Opening	42 1/8"
Available Colors	White (W), Graphite Steel (V)

POWER SOURCE	
Ratings	UL Listed
Electrical Requirements	120V, 10 Amps
Type	Electric

OPTIONS	
Pedestal	WDP5W, WDP5V
Pedestal (WxHxD)	29" x 14 1/8" x 30 7/8"
Sidekick™ Pedestal Washer	WD200CW, WD200CV
Sidekick™ Pedestal Washer (WxHxD)	29" x 14 1/10" x 30 4/5"

ACCESSORIES	
Hose Included	•

DIMENSIONS	
Product (WxHxD)	29" x 41 1/4" x 33 3/4" (55 15/16" W with door open)
Carton (WxHxD)	31 5/16" x 44 19/64" x 35 5/8"
Weight (Product/Carton)	227.1 lbs / 233.7 lbs

LIMITED WARRANTY	
	1 Year Parts and Labor, 10 Years Motor, Lifetime on Drum

UPC CODES	
WM9000HVA Washer (Graphite Steel)	048231 015349
WM9000HWA Washer (White)	048231 015356
DLEX9000V Electric Dryer (Graphite Steel)	048231 015363
DLEX9000W Electric Dryer (White)	048231 015370
DLGX9001V Gas Dryer (Graphite Steel)	048231 015387
DLGX9001W Gas Dryer (White)	048231 015394
WDP5V Pedestal (Graphite Steel)	048231 012904
WDP5W Pedestal (White)	048231 012898
WD200CV Sidekick™ Pedestal Washer (Graphite Steel)	048231 015189
WD200CW Sidekick™ Pedestal Washer (White)	048231 015196

LAUNDRY

DLEX9000_/DLGX9001_

9.0 cu.ft. MEGA Capacity TurboSteam® Dryer w/ On-Door Control Panel

DREAM BIG, STEAM BIG.

When you picture your dream laundry room, this is the dryer that you'll want to be in it. Every contour, every elegant line creates a look like no other, with unexpected touches like an integrated control panel right on the door. The 9.0 cu. ft. Mega Capacity keeps up with even LG's biggest washers, load for load. But no dream is complete without the power of LG TurboSteam® technology that lets you reduce wrinkles and odors and give favorite clothes new life in only 10 minutes.

SPECIFICATIONS

- 9.0 cu. ft. MEGA Capacity with NeveRust™ Stainless Steel Drum
- 14 Drying Programs
- 5 Temperature Settings

STYLISH DESIGN

- Upfront Electronic Control Panel with Dual LED Display and Dial-A-Cycle™
- Large Tinted Glass Door with On-Door Controls
- Optional Matching Drawer Pedestal
- Reversible Door

INNOVATIONS

- TurboSteam® Technology
- SteamFresh™ Cycle
- Sensor Dry System
- Precise Temperature Control with Variable Heat Source
- LoDecibel™ Quiet Operation
- SmartThinQ™ (wi-fi)
- SmartDiagnosis™
- 3 Minute Installation Check
- FlowSense™ Duct Clogging Indicator
- Wrinkle Care Option
- Anti-Bacterial Cycle
- Damp Dry Signal



Enjoy new ways to control your home with LG smart appliances

- Start the laundry while you're out shopping
- Get alerts when the cycle is finished
- Works with the LG SmartThinQ® app

SmartThinQ®



KEY FEATURES

9.0 cu.ft. MEGA Capacity

When it comes to laundry capacity, big is good, bigger is better, but biggest is best. With 9.0 cu ft of mega capacity, now you can fit a king size comforter and full set of bedding in a single load! You'll definitely have more room to dry.

TurboSteam® Technology

LG TurboSteam® technology to the rescue. Toss the shirt in the dryer, turn on TurboSteam® and in just 10 minutes your shirt is back in tip-top shape. Also helps refresh fabrics and reduce wrinkles in half the time of other steam settings.

Integrated Electronic Control Panel with Dual LED Display

Electronic control panel is integrated into the door for a distinct style plus the intuitive functionality you expect from an LG dryer.

LAUNDRY

DLEX9000_/DLGX9001_

9.0 cu.ft. MEGA Capacity TurboSteam® Dryer w/ On-Door Control Panel

CAPACITY	
Capacity	9.0 cu. ft.
APPEARANCE	
Design Look	On-Door Front Control Panel
Intelligent Electronic Controls with Dual LED Display	Yes
Touch Buttons	Yes
Dial-A-Cycle™	Yes
SmartThinQ® SMART FEATURES	
SmartDiagnosis™	Yes
wi-fi Enabled	Yes
Voice Activation	Yes
Works with	Google Assistant and Amazon Alexa
Check Remaining Time and Cycle	Yes
Remote Start On/Off	Yes
Cycle Complete Notification	Yes
DRYER PROGRAMS	
No. of Programs	14
Programs (Sensor Dry)	Cotton/Normal, Perm. Press/Casual, Towels, Delicates, Heavy Duty, TurboSteam®, SteamSanitary™, Bedding, LowTemp Dry, Anti-Bacterial, Jumbo Dry, Download/Super Dry
Programs (Manual Dry)	Speed Dry, Air Dry
No. of Options	13
Options	More Time, Less Time, Custom Program, PGM Save, Damp Dry Signal, Wrinkle Care, Child Lock, wi-fi Connect, Drum Light, Energy Saver, TurboSteam®, Smart Grid, Remote Start
Temperature Settings	High, Medium High, Medium, Low, Ultra Low
Drying Levels	Very Dry, More Dry, Normal Dry, Less Dry, Damp Dry
Manual Dry Times	60 min., 50 min., 40 min., 30 min., 20 min., More Time/Less Time
CONVENIENCE FEATURES	
LoDecibel™ Quiet Operation	Yes
End of Cycle Signal	Yes
Drum Light	Yes
Reversible Door	Yes
FlowSense™ Duct Clogging Indicator	Yes
Venting Option	Electric: 4 Way Venting / Gas: 3 Way Venting
Leveling Legs	4 Adjustable Legs
Remaining Time Display/Status Indicator(s)	Yes
3 Minute Installation Check	Yes
SmartDiagnosis™	Yes (v 3.0)
SmartThinQ™ (wi-fi)	Smart Grid Ready, Energy Monitoring, Black Box, Remote Control, Home Chat

MATERIALS AND FINISHES	
NeveRust™ Stainless Steel Drum	Yes
Cabinet	Painted Steel
Control Panel	Plastic
Top Cover	Painted Steel
Door	Glass/Chrome
Door Cover	Dark Black Tinted Square Cover
Available Colors	White (W), Graphite Steel (V)

POWER SOURCE	
Ratings	CSA Listed
Electrical Requirements	120V, 15 Amps (Gas) / 240V, 30 Amps (Electric)
Type	Gas/Electric
BTU	20,000

OPTIONS	
LP Conversion Kit	LPK1
Pedestal	WDP5W, WDP5V
Pedestal (WxHxD)	29" x 14 1/8" x 30 7/8"

DIMENSIONS	
Product (WxHxD)	29" x 40 7/8" x 33 3/8" (56" with door open)
Carton (WxHxD)	31 3/10" x 44 9/10" x 36 6/10"
Weight (Product/Carton) Electric	157.4 lbs / 182.1 lbs
Weight (Product/Carton) Gas	160.7 lbs / 185.4 lbs

LIMITED WARRANTY	
	1 Year Parts and Labor

UPC CODES	
DLEX9000V Electric Dryer (Graphite Steel)	048231 015363
DLEX9000W Electric Dryer (White)	048231 015370
DLGX9001V Gas Dryer (Graphite Steel)	048231 015387
DLGX9001W Gas Dryer (White)	048231 015394
WM9000HVA Washer (Graphite Steel)	048231 015349
WM9000HWA Washer (White)	048231 015356
WDP5V Pedestal (Graphite Steel)	048231 012904
WDP5W Pedestal (White)	048231 012898
WD200CV Sidekick™ Pedestal Washer (Graphite Steel)	048231 015189
WD200CW Sidekick™ Pedestal Washer (White)	048231 015196

LG Electronics U.S.A., Inc.

1000 Sylvan Avenue Englewood Cliffs, NJ 07632

Customer Service and Technical Support: (800) 243-0000

LG.com

Design, features and specifications are subject to change without notice. Non-metric weights and measurements are approximate.

© 2016 LG Electronics USA, Inc. All rights reserved. "LG Life's Good" is a registered trademark of LG Corp. All other product and brand names are trademarks or registered trademarks of their respective companies. 10/10/19

4-Burner Built-in Propane Gas Island Grill Head in Stainless Steel with Rotisserie Burner



This handsome KitchenAid 30 in. Built-In Island Gas Grill Head is constructed with premium corrosion-resistant materials for durability and ease of upkeep. Boasting 775 sq. in. of total cooking space, this unit thrusts up to 61,000 BTUs of fire-roasting energy across four main stainless steel burners and one ceramic rotisserie burner. Perched above the primary burners are angled flame tamers that deflect heat, prevent flare-ups and vaporize drippings into flavor infusions that permeate foods with a distinctive smoky taste. This Even-Heat System distributes consistent and uniform heat across the stainless steel-wrapped cooking grates so there aren't any hot spots. Electronic ignition allows burners to fire up instantly and the built-in thermometer enables precise temperature regulation.

- 30 in. wide built-in grill head for outdoor kitchen islands
- Equipped with 4 premium-grade 12,000 BTU stainless steel main burners
- 304-grade stainless steel wrapped cooking grids offer superb heat retention and produce restaurant-quality sear marks
- Supplies 61,000 total BTUs for exceptional grilling results
- Equipped with 13,000 BTU ceramic rotisserie burner (rotisserie kit, model #790-0007A sold separately)
- Built-in heat gauge allows precise temperature regulation
- 304-grade stainless steel construction offers durability and easy-to-clean surfaces
- Battery-operated electronic continuous ignition system offers quick and easy start-ups
- Conveniently included are the parts needed for conversion to natural gas use
- Dimensions of product listed represents total dimensions for overall product and do not represent island cutout dimensions; check instruction manual for island cutout dimensions and proper ventilation requirements

SPR627OS

34.0" x 23.63" x 23.5" (H x W x D)

Outdoor all-refrigerator for built-in use, with lock, digital thermostat, black cabinet, and stainless steel door

Highlights:

Designed and constructed for use in the outdoors

Flexible design allows built-in or freestanding use in 24" wide spaces

Stainless steel door offers a professional look

Recessed LED lighting offers attractive presentation of stored products

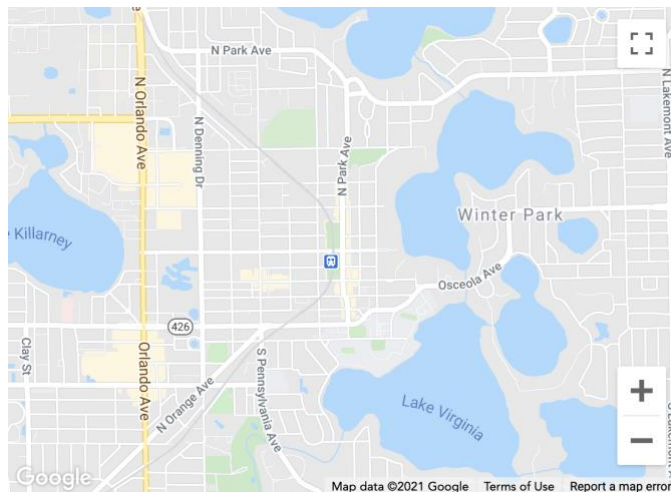


Built-in capable	Front-breathing design lets you make the best use of space by installing your appliance under the counter
Fully finished black cabinet	Allows the unit to be used freestanding in the outdoors
Stainless steel door	Durable construction with a professional look
Factory installed lock	Keyed lock for a secure interior
Professional handle	Includes a full-length pro handle in chrome
Frost-free operation	No-frost operation for minimum user maintenance
Digital thermostat	Electronic controls located inside the unit for precise temperature management
Recessed LED light	Elegant lighting with a convenient on/off switch on the control panel
Adjustable glass shelves	Rearrange refrigerator space to accommodate all sizes or remove shelves for simple cleanup
Internal fan	Fan-forced cooling ensures the unit is evenly cooled from top to bottom



Get to know Winter Park

People who live in Winter Park will tell you that Winter Park is not Orlando, that it is its own thing. Though the uninitiated may only notice a change in the color of the street signs, there is a very real attitudinal difference between the two cities. Winter Park is as old as the metropolis to its south, but it has denied itself growth in the service of charm, and that means there's no more pleasant city in the metro area. Winter Park is brick streets and live oak trees, twee little bakeries serving obscure Portuguese pastries and carefully curated designer boutiques where well-behaved dogs are not only welcome but expected. Homes range from textbook midcentury Florida ranch to gigantic lakeside mansions — the latter coming in two varieties: century-old brick estates and architecturally significant modern masterpieces. The most sought-after properties are on a chain of lakes linked by canals, or within walking distance of Park Avenue, the brick-and-boutique-lined heart of downtown.



NEARBY NEIGHBORHOODS:

[Downtown Orlando](#), [Longwood](#), [Lake Mary](#)

History & Culture

NATOLI & CARP TEAM CORCORAN

PREMIER REALTY

Winter Park — as the name might tell you — was conceived as a resort community, right about the time the railroad came through. The lakes and ancient, moss-laden trees made for a storybook setting, and it became a place of retreat for the wealthy fleeing northern winters (at least the subset that didn't care for the beach). The chain of lakes created a boating culture that continues to this day. Winter Park is a city that loves its gardens



and its museums, of which there are many. The civic calendar is full of farmer's markets and art fairs, and the laid-back party atmosphere that was present at the city's founding is still there today. Most of the people who live in Winter Park seem to think it's the best place on earth — and are insistent that you don't confuse it with Orlando.

Dine & Shop

If "Dine and Shop" were not the heading of this section, it might do as the motto of the city of Winter Park. There's an incredible array of chef-driven restaurants here, many of them award-winning, and the whole town treats dining out like a religious observance. Locals will even dress for dinner, at least by Florida standards. Beyond the high end, the area bristles with dozens of ethnic outlets, refined

chain eateries, and diners and fast food and coffee shops that all — even the Popeye's — seem ironically hip. The best boutiques line

Park Avenue, surely one of the south's premier retail strips. But there are dozens of other shopping centers in town, and there's often a





locally owned gem taking up a tropically colored bungalow on a side street. While Orlando is full of big-name boutiques, there's rarely a reason for a Winter Park fashionista to leave the city limits.

Utilities/Services:

Electric: Winter Park

Water: Winter Park

Recycling (Tuesday, Friday): Winter Park/WastePro

Trash (Tuesday, Friday): Winter Park/WastePro

Yard Waste (Wednesday): Winter Park/WastePro

Schools:

Winter Park (High School)

Distance from the property – 1.3 Miles

Glenridge (Middle School)

Distance from the property – 2.2 Miles

Brookshire (Elementary)

Distance from the property – 1.4 Miles

Other Winter Park Schools:

St. Margaret Mary Catholic School

142 EAST SWOOPE AVENUE

United Faith Private School

800 SYMONDS AVENUE



Winter Park Tech

901 WEST WEBSTER AVENUE

School for Young Performers FL

1400 W. FAIRBANKS AVENUE

Monarch Learning Academy

1600 SOUTH ORLANDO AVENUE

St. John Lutheran School

1600 S ORLANDO AVE

La Amistad Educational Center

1650 NORTH PARK AVENUE

La Amistad

1650 NORTH PARK AVENUE

The Parke House Academy

1776 MINNESOTA AVENUE

Lakemont Elementary School

901 NORTH LAKEMONT AVENUE

Park Maitland School

1450 S. ORLANDO AVE.

The Volant School

1721 HARMON AVENUE

The Huntington Learning Center

1997 ALOMA AVENUE

Christian Education at Woodruff Academy

760 NORTH LAKEMONT AVENUE

Circle Christian School

2134 KENTUCKY AVENUE

Bright Learning - Cyber High School

1230 S LAKEMONT AVE



Alpha Christian Academy

1550 SOUTH LAKEMONT AVENUE

Beeman Park Preparatory School

2300 RIDGE AVENUE

Killarney Elementary School

2401 WELLINGTON BOULEVARD

Caravan Learning Circle

2535 LOTAFUN AVE



FOR A PRIVATE TOUR – OR ADDITIONAL INFORMATION

www.1751Goodrich.com



SOCIAL MEDIA:



Irina Carp & Dan Natoli

Real Estate Professionals

Corcoran Premier Realty

1921 Maguire Road, Suite 104 | Windermere, FL

Irina cell# [407.969.9937](tel:407.969.9937) | Dan cell # [407.595.8395](tel:407.595.8395)

TeamNatoliandCarp@gmail.com

www.CentralFloridaEstates.com

Co-Founders www.Why-Orlando.com