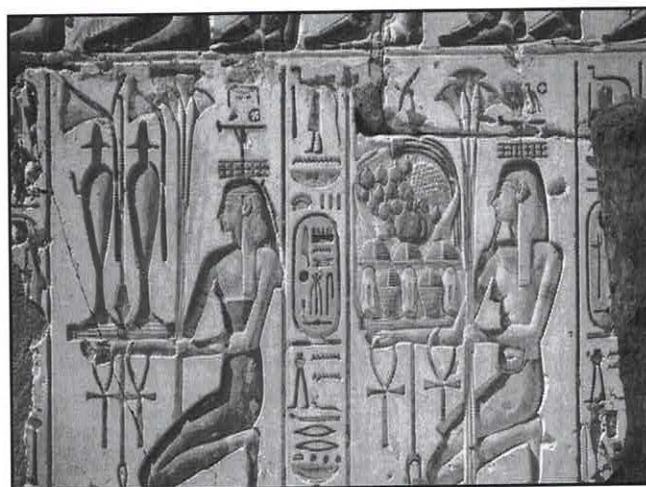


WHEN HOMEGROWN CSAM
PRODUCTION BECOMES
COMMERCIAL
DISTRIBUTED....VICTIM IMPACT

Sharon W. Cooper, MD FAAP
Developmental and Forensic Pediatrics, P.A.
Department of Pediatrics
University of North Carolina School of Medicine



BEFORE AND AFTER THE WEB.....



Private Collections



Homemade Images



Mail Order Catalogues
To Online Shopping



United States Postal Inspection
Service's New Frontier

From print photos to videotapes to
online networking....

ULTIMATELY THE ARTWORK
OF THESE VICTIMS BECAME AN
INTERNATIONAL OUTREACH
PROGRAM FOR PRISONERS WHO
WERE INVOLVED IN CHILD SEXUAL
ABUSE AND/OR PRODUCTION OF
CHILD SEXUAL ABUSE MATERIAL

ILLUMINATIONS EXHIBIT



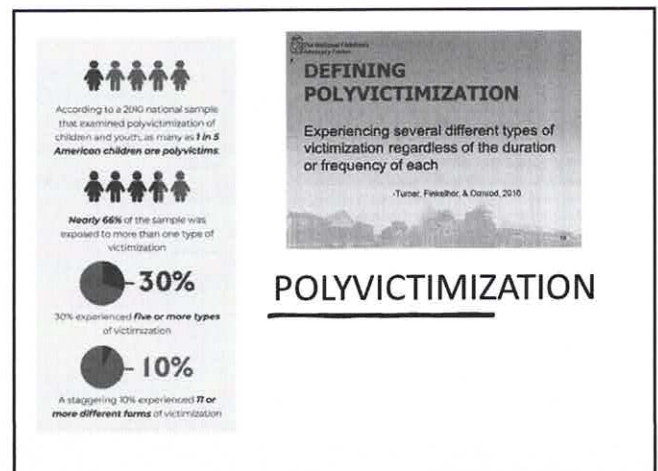
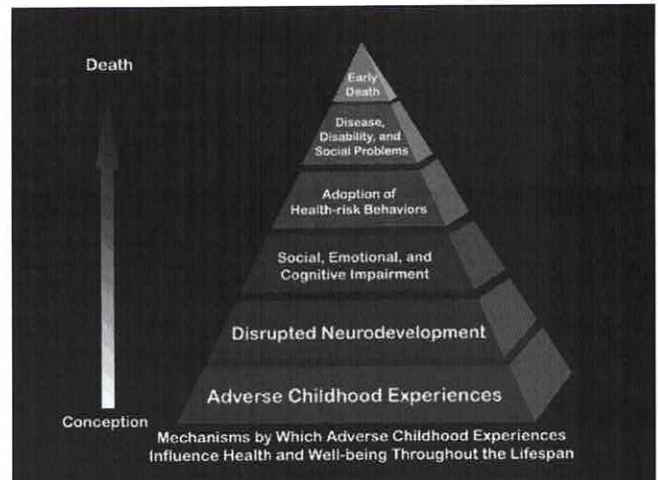
FROM A VICTIM'S PERSPECTIVE...

THE ABUSE OF CHILDREN

- **Physical impact:** childhood abuse leads to life long increased incidence of medical disorders separate from additional risk for immune disorders. (www.acestudy.org).
- **Psychological impact:** relationship difficulties, depression, PTSD, anxiety, substance use, complex trauma, revictimization, and suicide.
- **Spiritual impact:** a wounding that sometimes hinders faith and belief with resultant loss of faith and a sense of hopelessness.



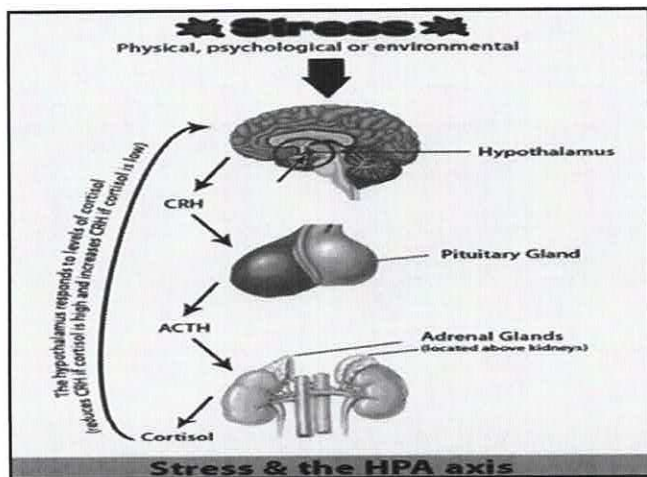
WHAT A DIFFERENCE A DAY MAKES
24 HOURS FROM THE WASHINGTON, DC START POINT



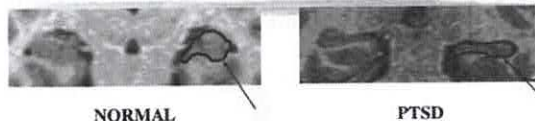


CSA + CSE (PHOTOS/VIDEOS) X THOUSANDS OF RECIPIENTS WHICH MAY LEAD TO SEX TRAFFICKING AND ITS ASSOCIATED VICTIMIZATION...

THE IMPACT OF CSAM FROM ONE SURVIVOR'S PERSPECTIVE OF HER EXPERIENCE OF ABUSE POLYVICTIMIZATION

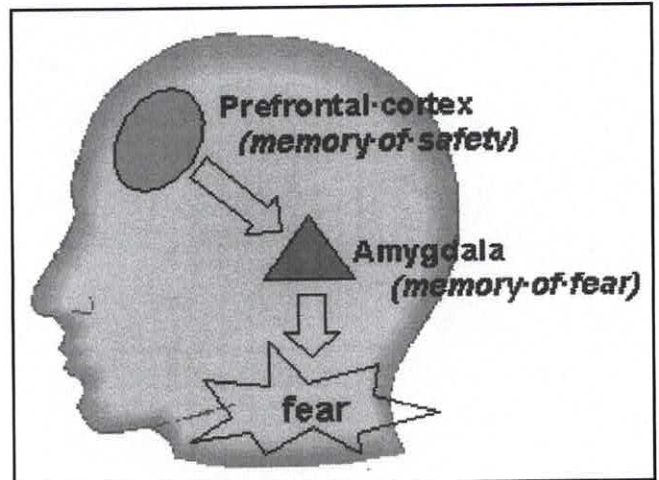
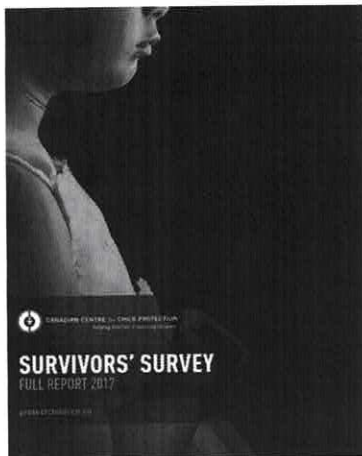


Hippocampal Volume Reduction In PTSD

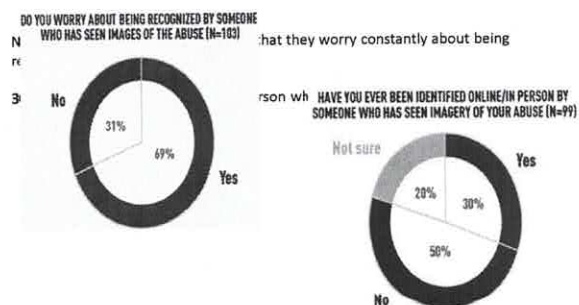


MRI scan of the hippocampus in a normal control & patient with PTSD secondary to childhood abuse. The hippocampus, outlined in red, is visibly smaller in PTSD. Overall 12% reduction in volume in PTSD.

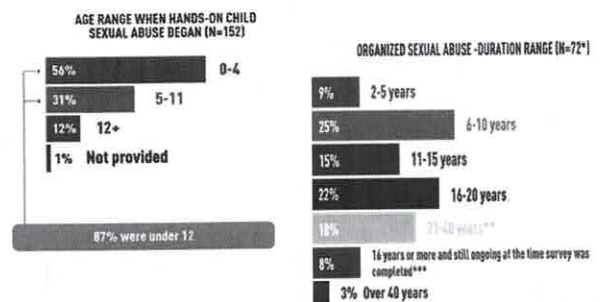
(Bremner 1995; Bremner 1997)




Survivors' Survey: Lifelong Impacts



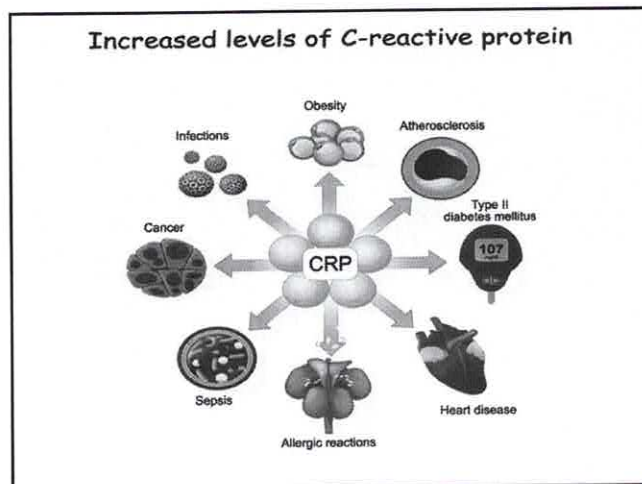
LESSONS LEARNED FROM SURVIVORS





MEDICAL DISCIPLINES RELEVANT TO CSAM/CSE AND THE HEALTH IMPACT

- General Pediatrics
- Child Abuse Pediatrics
- Developmental & Behavioral Pediatrics
- Adolescent Medicine-Gender dysphoria, Educational decline
- Trauma informed Internal Medicine
- Immunology and Rheumatology-Lupus, Arthritis
- Gastroenterology-Peptic Ulcer Disease, Colitis
- Cardiology-Hypertension, Dysrhythmias
- Endocrinology-Thyroid disease, Diabetes
- Neurology-Migraine headache syndrome, PNES
- Pulmonology-Severe Insomnia, Asthma
- Psychology-Complex PTSD, Anxiety, Depression
- Gynecology-Endometriosis, Hypoactive Sexual Desire Disorder
- Oncology-Lung, Thyroid, Uterine, Colon Cancers
- Addiction Medicine
- Child, Adolescent and Adult Psychiatry
- Integrative and Alternative Medicine



Over a 20 year period, relative risk of death compared to general population...

	PNES	Epilepsy
18-29 yo	8.6 (3.6-20.7)	10.5 (7.5-14.6)
30-39 yo	7.2 (3.6 - 14.4)	8.1 (6.0-10.8)

is not significantly different between epilepsy and PNES





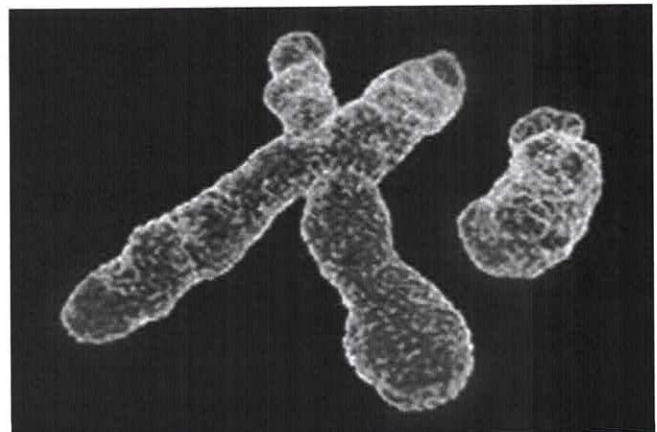
SEXUAL ASSAULT CASES



DRUG/ALCOHOL
FACILITATED
SEXUAL ASSAULT
WITH IMAGE
PRODUCTION.....

CHROMOSOME CHANGES

- Previous studies have studied the link between stress and cellular ageing, disease and mortality in humans.
- Compared to control non-abused children, a study population of abused children demonstrated significantly more telomere erosion between age-5 baseline and age-10 baseline .



PASLEKA/PHOTO RESEARCHERS, INC.: Shalev et al, Exposure to violence during childhood is associated with telomere erosion from 5 to 10 years of age: a longitudinal study. *Mol. Psychiatry* 18(5): 576-581 May 2013.

SEXTORTION

- The self-production of images in response to blackmail that previous images already exist and will be circulated if the victim does not comply with the blackmailer's demands.
- The end results are the production of abusive images CSAM
- This is a sexual crime with no "hands on contact"
- The long-term victim impact is profound.

