



# Rainforest reflections



**TWEED**  
SHIRE COUNCIL

Restoring rainforest and associated habitats under Council's  
Private Land Conservation Program

# Overview: History and components









- 2006 River Health Grant
- 2009 Biodiversity Grant
- 2013 Land for Wildlife Scheme
- 2015 Backyard Habitat for Wildlife
- 2015 Koala plan of management funding
- Administration/governance





# Current snapshot

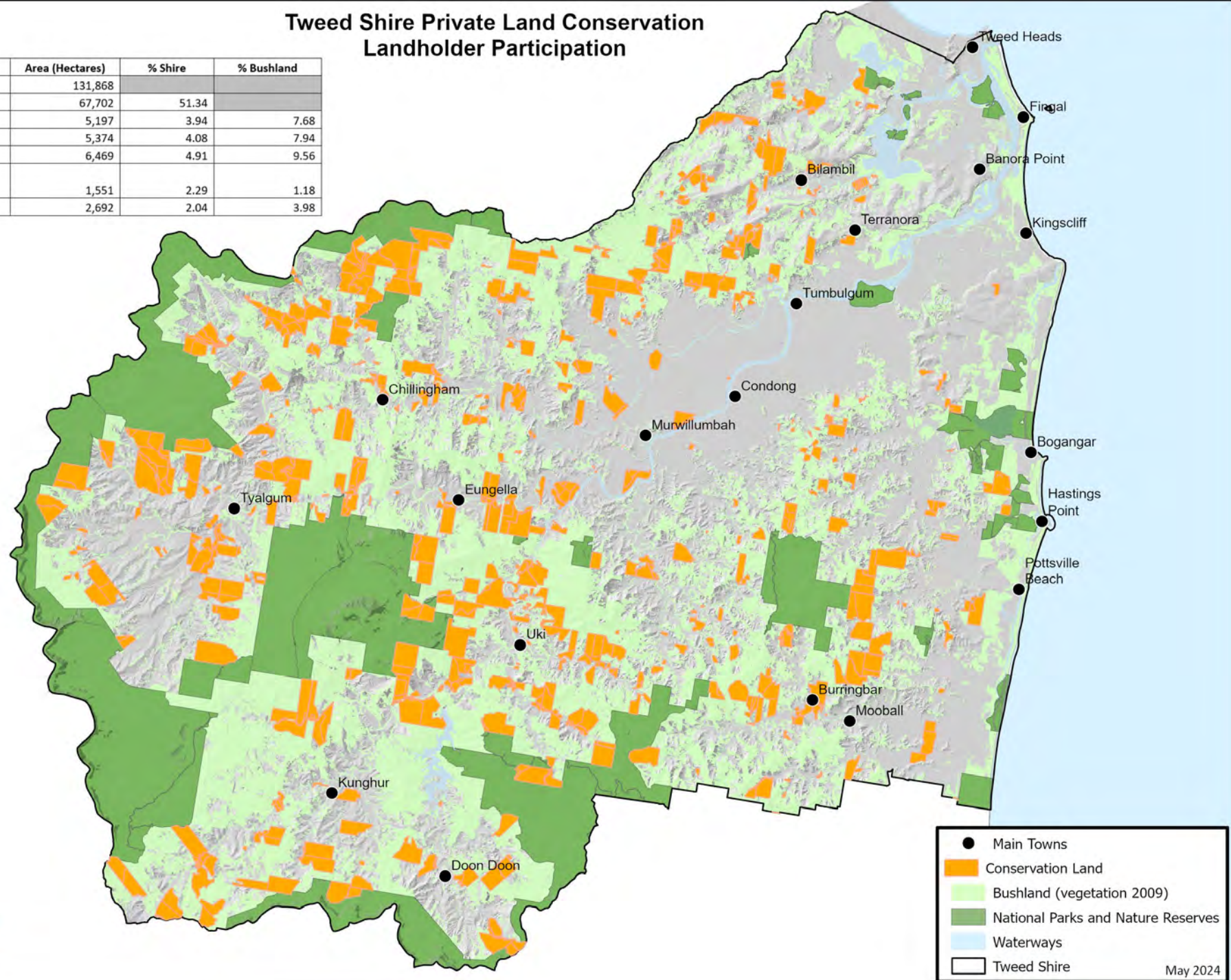


Funding	Grants	Properties	LfW	Restored	Riverbank	Trees	Conserved	Workshops
\$ 3.9M	 885	 600	 230	 750 ha	 132km	 172k	 14,180 ha	 1,500



# Tweed Shire Private Land Conservation Landholder Participation

	Area (Hectares)	% Shire	% Bushland
Tweed Shire	131,868		
Bushland	67,702	51.34	
Biodiversity Grants	5,197	3.94	7.68
Land for Wildlife	5,374	4.08	7.94
River Health Grants	6,469	4.91	9.56
Wildlife Refuge and Conservation Agreements	1,551	2.29	1.18
Other Funding & Projects	2,692	2.04	3.98







Tweed Shire: A biodiversity hotspot







# Biodiversity and PLC

- Landscape - scale biodiversity management
- 86% of Tweed Shire is private land
- Huge areas of habitat on private land
- Private land connects and buffers national parks
- Significant threats to private land habitat
- Therefore, PLC is vital





**Benefits: Environmental, economic and community**



## What work is being funded?

- Mainly assisted regeneration works
- Some reconstruction projects
- One large reconstruction/type conversion project
- Research projects, including for threatened species
- Contributions to projects managed by Tweed Landcare
- Major community events













Problem weeds



## PLC Program challenges

- Emerging weed and other threats
- Landscape - scale habitat disintegration
- Landholder demographics
- Diverse community attitudes
- Poor land custodian (bad neighbours)
- Funding bombs: spending large sums of money quickly
- Climate change





Challenges



## On the horizon...

- Strategic improvement, including through the Conservation Strategy
- Improve service delivery
- Strengthen and networks and relationships
- Improve data collection and monitoring
- Increase involvement of first nations people
- Respond to climate change





PLC is a big part of the future