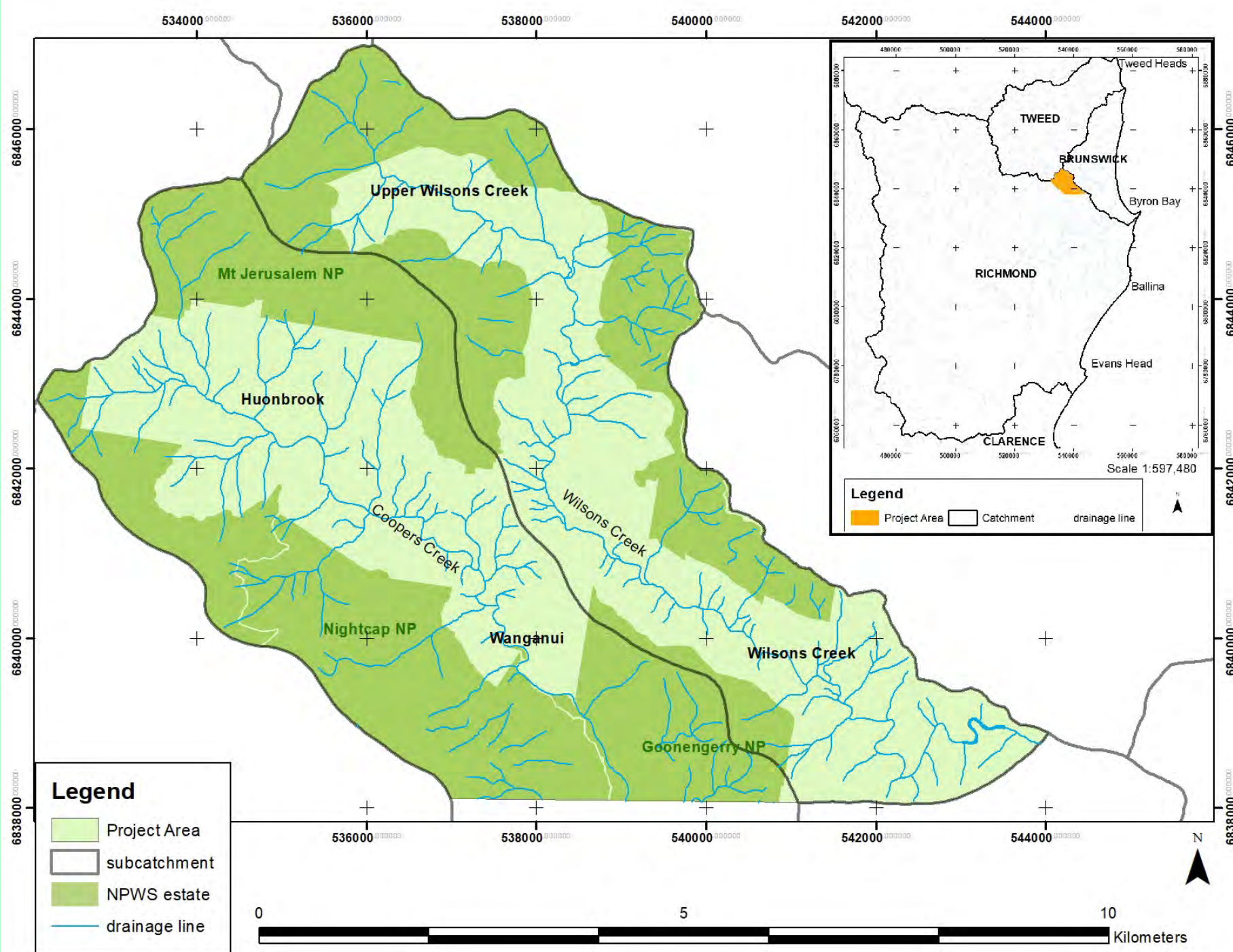


Big values, grave threats, solutions and questions

The rainforests of Wilsons Creek, Huonbrook
and Wanganui in the Byron hinterland



Project area
Population ~1,000
Area 2742 ha
Tenure mostly private

Two waterways
Wilsons River
Coopers Creek

Three National Parks
Nightcap
Mount Jerusalem
Goonengerry





Vegetation

The largest areas of private land rainforest and related vegetation (wet sclerophyll and Brush Box) in the Byron Shire.

Also:

- Dry sclerophyll
- Camphor Laurel
- Lantana
- Mixed regrowth – natives and weeds
- Horticulture
- Open farmland
- Residential

Threatened ecological communities

Name	NSW status	Comm. status
Lowland Rainforest in the NSW North Coast and Sydney Basin Bioregions	Endangered	
Lowland Rainforest of Subtropical Australia		Critically Endangered
Lowland Rainforest on Floodplain in the New South Wales North Coast Bioregion	Endangered	

Threatened flora (18 species, 10 examples shown)

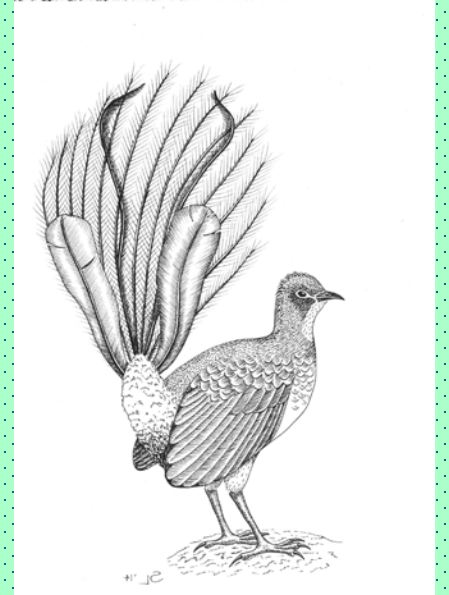
Scientific Name	Common Name	NSW status	Comm. status
<i>Antrophyum austroqueenslandicum</i>	Border Ranges Lined Fern	Critically Endangered	Critically Endangered
<i>Davidsonia johnsonii</i>	Smooth Davidson's Plum	Endangered	Endangered
<i>Elaeocarpus williamsianus</i>	Hairy Quandong	Endangered	Endangered
<i>Endiandra hayesii</i>	Rusty Rose Walnut	Vulnerable	Vulnerable
<i>Floydia praealta</i>	Ball Nut	Endangered	Vulnerable
<i>Fontainea australis</i>	Southern Fontainea	Vulnerable	Vulnerable
<i>Hicksbeachia pinnatifolia</i>	Red Boppel Nut	Vulnerable	Vulnerable
<i>Ochrosia moorei</i>	Southern Ochrosia	Endangered	Endangered
<i>Owenia cepiodora</i>	Onion Cedar	Endangered	Vulnerable
<i>Syzygium hodgkinsoniae</i>	Red Lilly Pilly	Vulnerable	Vulnerable



© BLACK DIAMOND IMAGES

Threatened fauna (28 species, 15 examples shown)

	Scientific Name	Common Name	NSW status	Comm. status
Frogs	<i>Assa darlingtoni</i>	Pouched Frog	Vulnerable	Vulnerable
Reptiles	<i>Hoplocephalus stephensii</i>	Stephens' Banded Snake	Vulnerable	
Birds	<i>Ptilinopus superbis</i>	Superb Fruit-Dove	Vulnerable	
	<i>Podargus ocellatus</i>	Marbled Frogmouth	Vulnerable	
	<i>Ixobrychus flavicollis</i>	Black Bittern	Vulnerable	
	<i>Calyptorhynchus lathami lathami</i>	South-eastern Glossy Black-Cockatoo	Vulnerable	Vulnerable
	<i>Tyto tenebricosa</i>	Sooty Owl	Vulnerable	
	<i>Menura alberti</i>	Albert's Lyrebird	Vulnerable	
	<i>Dasyurus maculatus</i>	Spotted-tailed Quoll	Vulnerable	Endangered
Mammals	<i>Phascolarctos cinereus</i>	Koala	Endangered	Endangered
	<i>Potorous tridactylus</i>	Long-nosed Potoroo	Vulnerable	Vulnerable
	<i>Myotis macropus</i>	Southern Myotis	Vulnerable	
	<i>Miniopterus australis</i>	Little Bent-winged Bat	Vulnerable	
	<i>Phyllodes imperialis</i>	Southern Pink Underwing	Endangered	Endangered
Insects	<i>southern subspecies</i>	Moth		
Fish	<i>Maccullochella ikei</i>	Eastern Freshwater Cod (re-introduction)	Endangered (FM Act)	











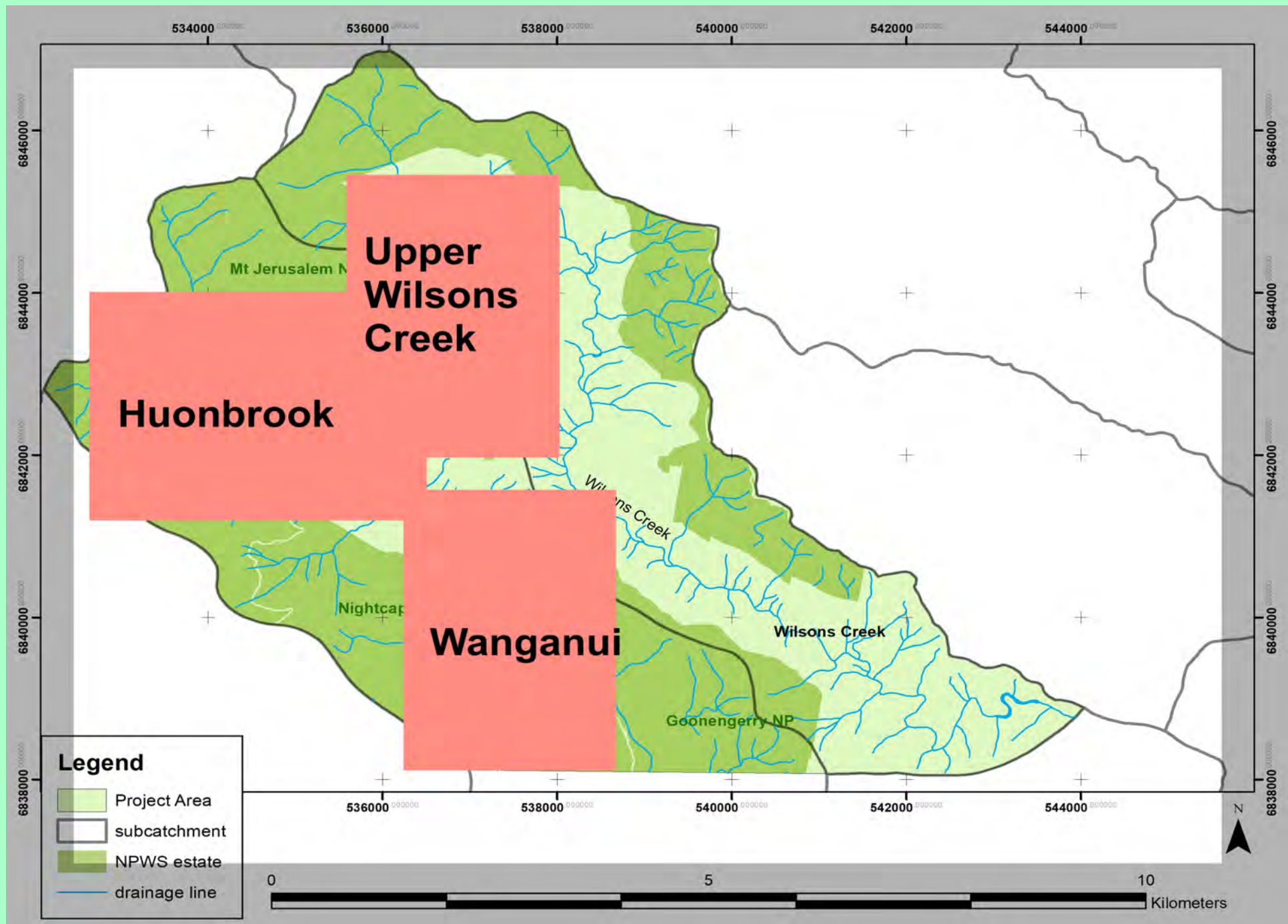
Vegetation areas

Fire impact 602.94 ha

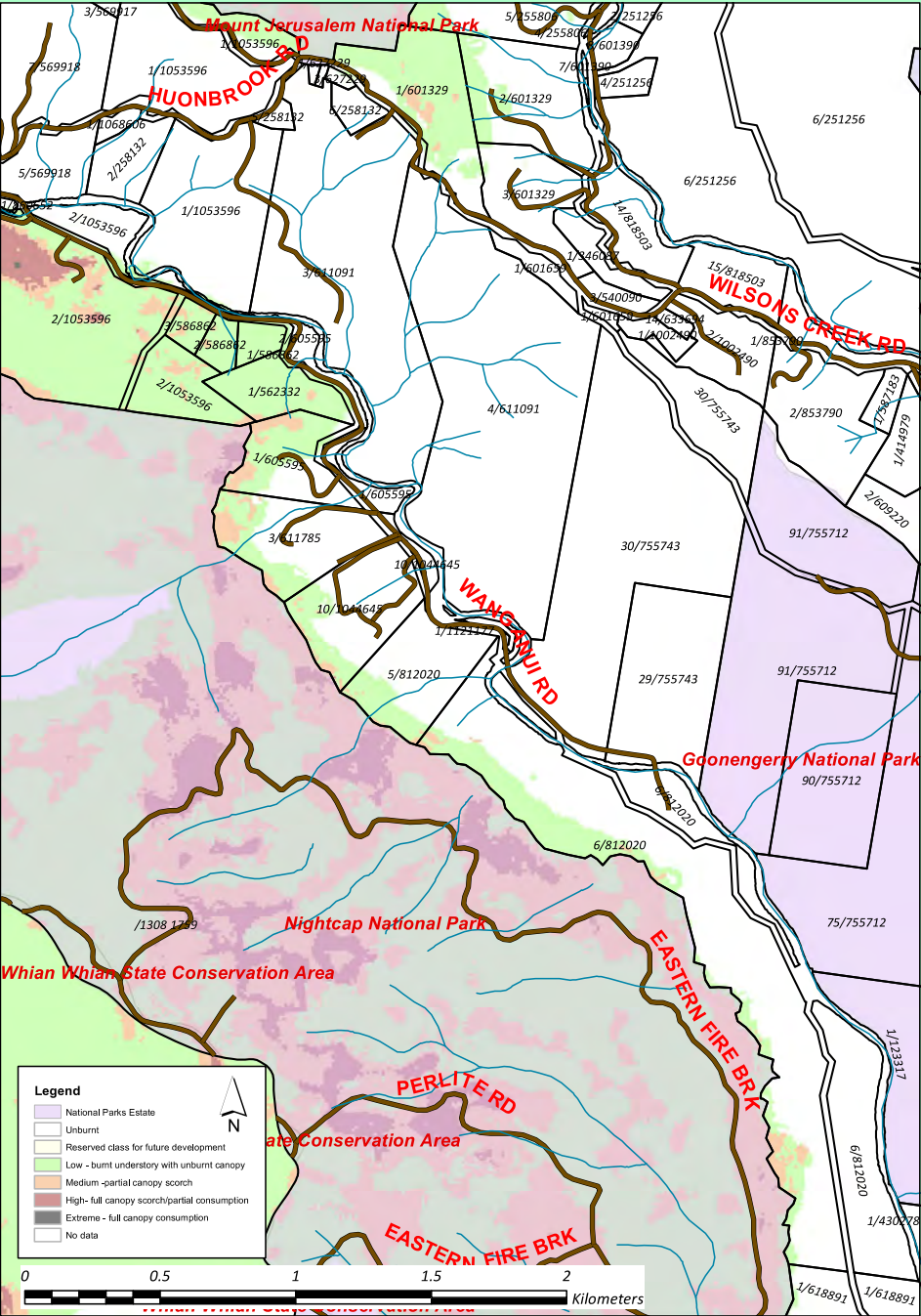
	Area (ha) by locality			
Severity	Wang-anui	Huon-brook	Upper Wilsons	TOTAL
Extreme	0.089	0	0	0.089
High	4.456	2.763	0	7.219
Moderate	14.08	62.666	12.366	89.112
Low	76.772	285.91	143.85	506.52
TOTAL BURNT	95.397	351.33	156.21	602.94

Legend

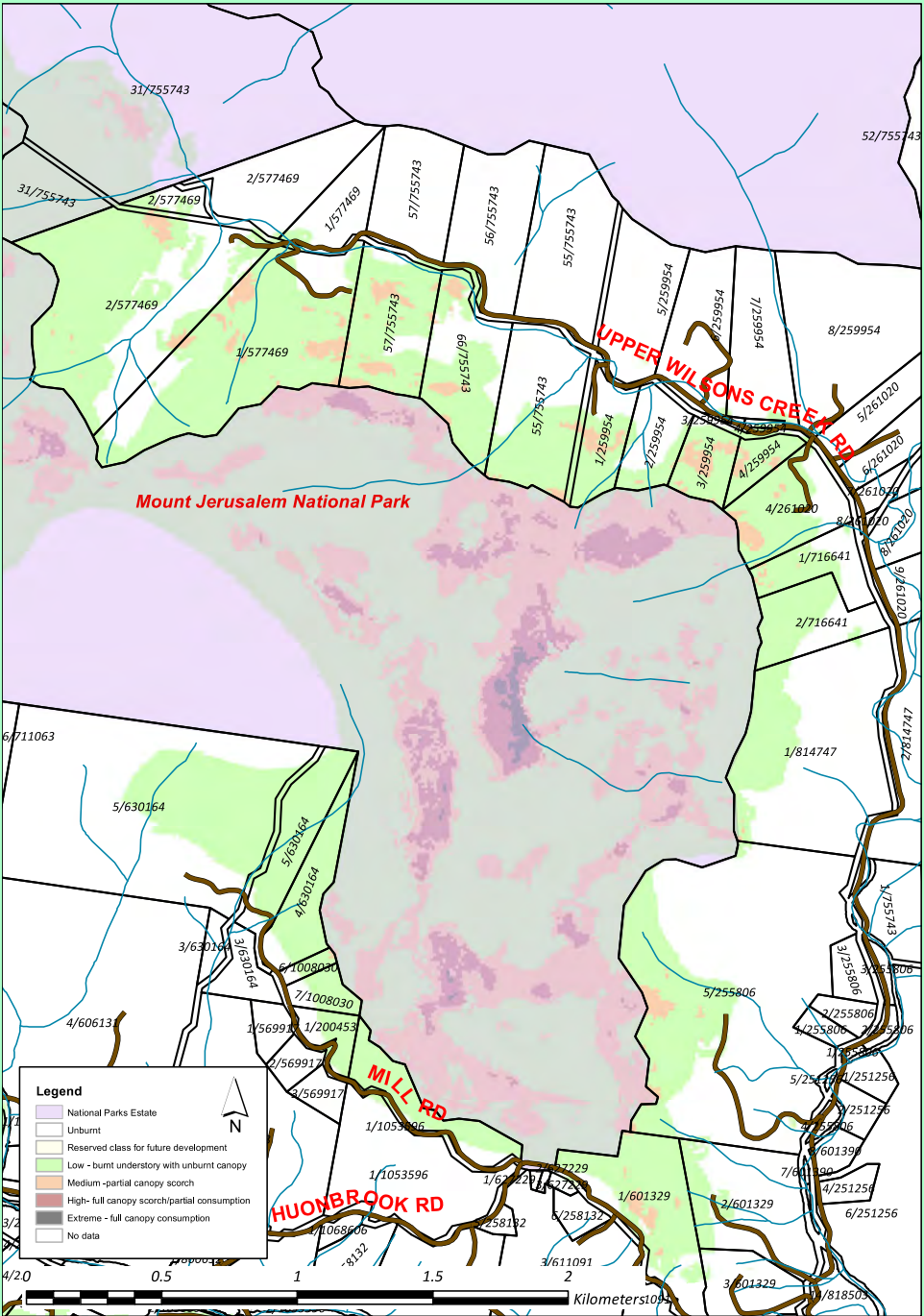
-  National Parks Estate
-  Unburnt
-  Reserved class for future development
-  Low - burnt understory with unburnt canopy
-  Medium -partial canopy scorch
-  High- full canopy scorch/partial consumption
-  Extreme - full canopy consumption
-  No data



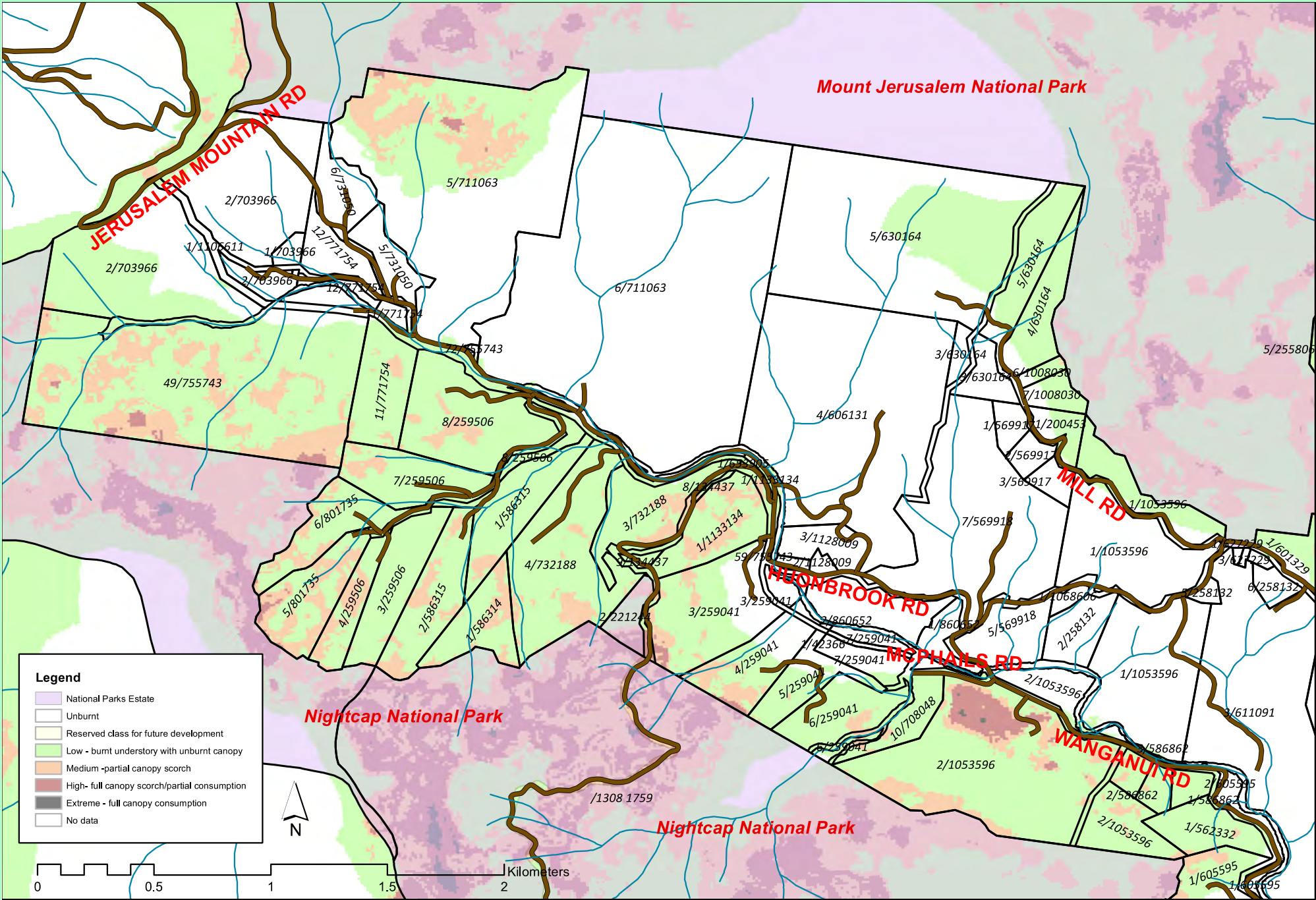
Fire Extent and Severity - Wanganui



Fire Extent and Severity - Upper Wilsons Creek



Huonbrook





Slender Grape
(native)

Cayratia
clematidea



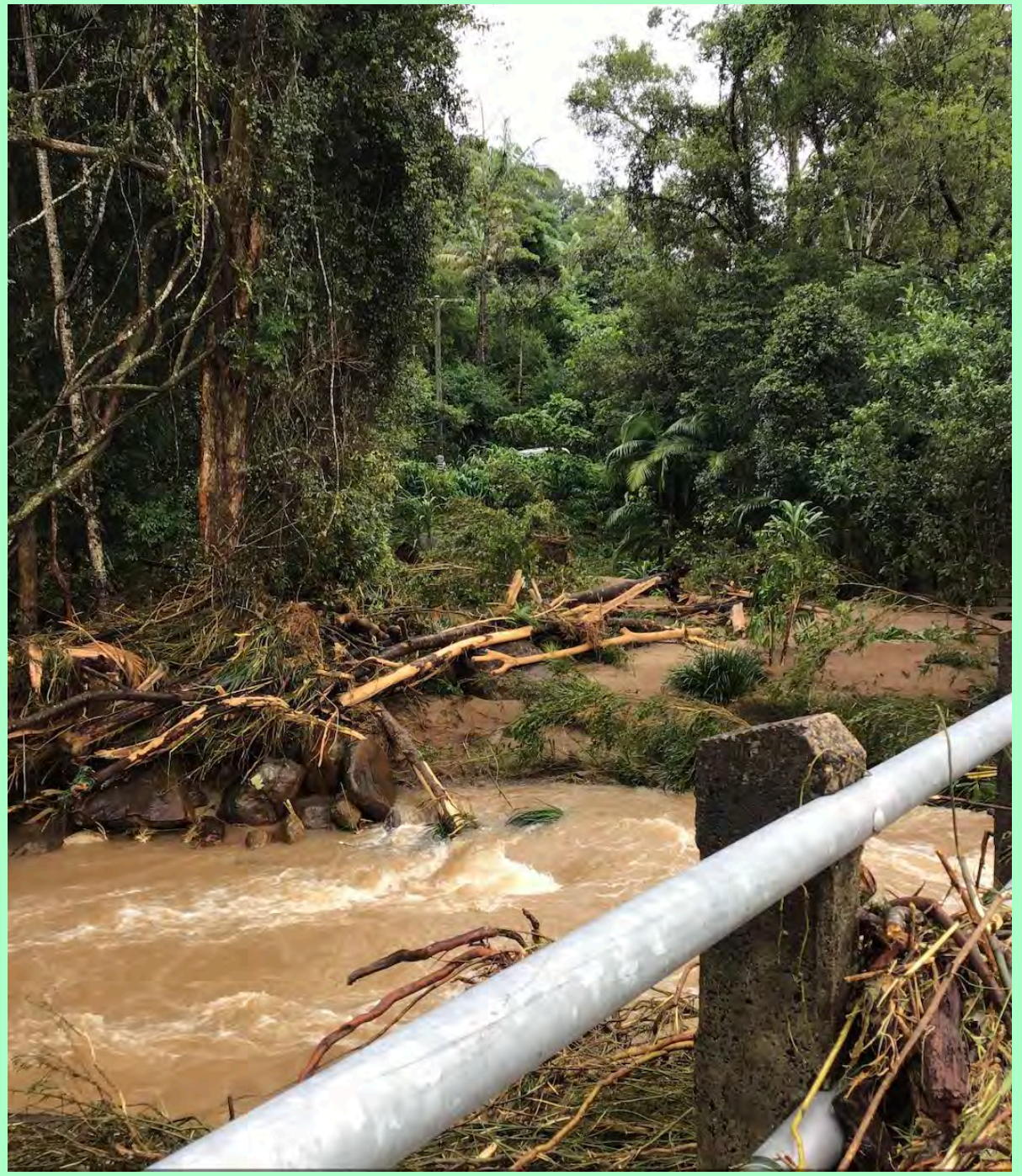
Initial works commencing
following initial
weed/native response

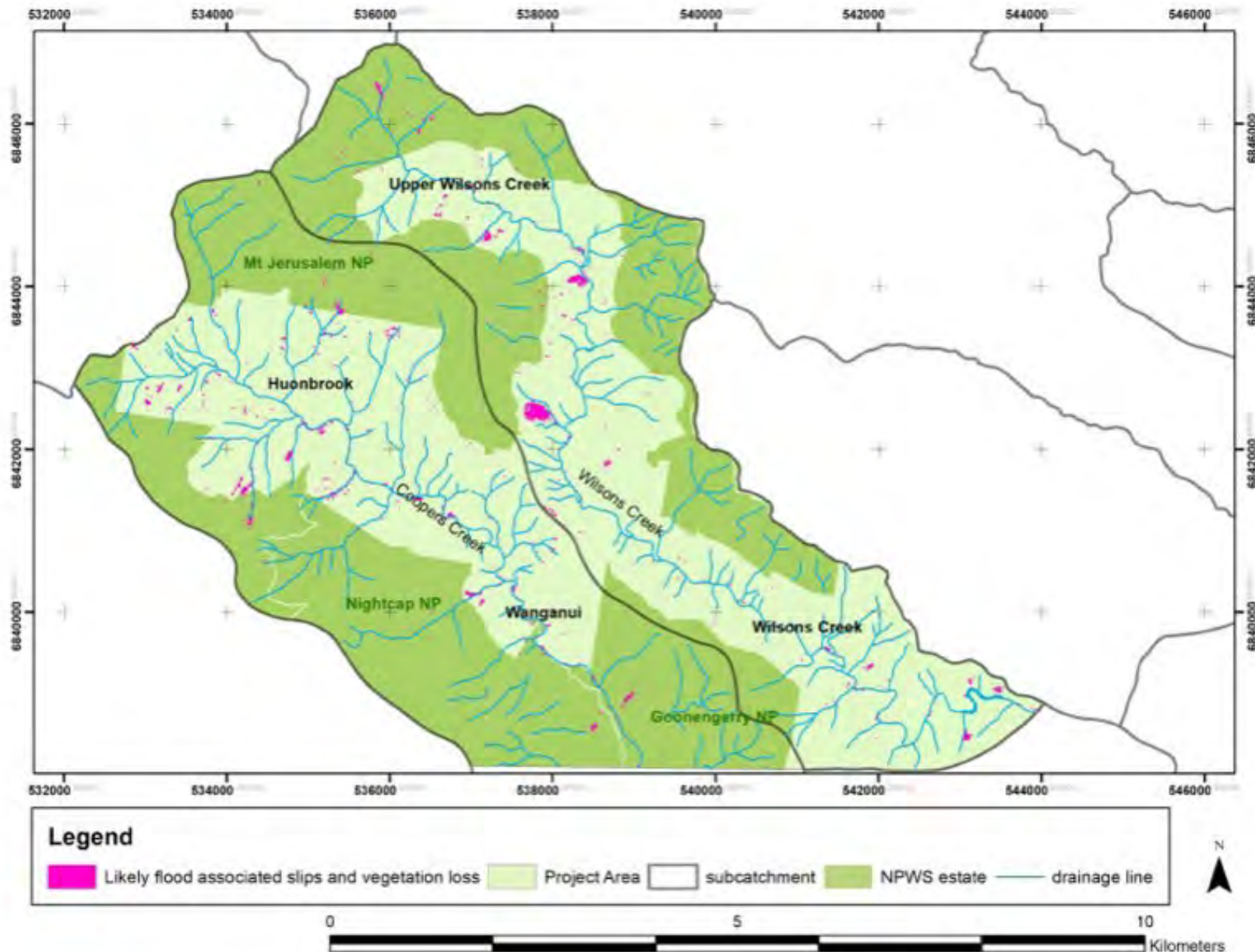


After initial works

Handweeding on burnt slope with Albert's Lyrebird
picked up nearby on camera trap at water source.







Vegetation Loss 2022 Rain Event

Total area lost 40.5 ha

Largest landslip 5.24 ha

Mapping layer generated by
Dr Patrick Norman, Research
Fellow, Griffith Climate Action
Beacon as part of a National
Environmental Science Program
(Resilience Landscapes).

Flood-dispersed weeds



White Ginger

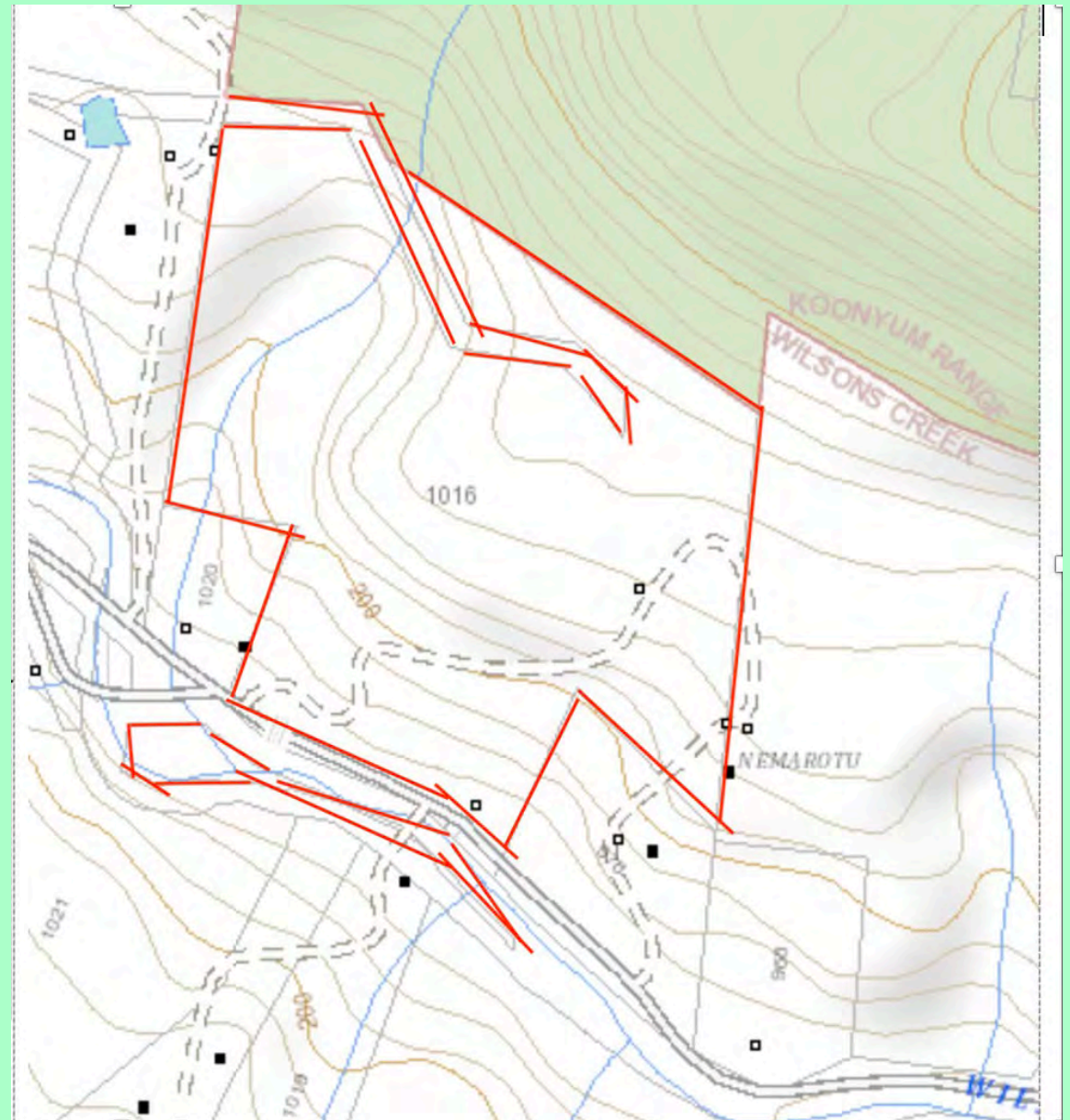


Coral Tree

Are we winning?

RECENT LOSSES		RECENT GAINS (restoration projects)		
Fires	602.9	Bush Connect (with Goonengerry	-20	Environmental Trust
Rain event	40.5	Linkages	12	Environmental Trust
TOTAL	643.4 ha	Times of Change	46	Environmental Trust and Gondwana Rainforest Trust
		TOTAL	~68 ha	

40 years of habitat development



But what will happen next?

Grateful thanks to Wilsons Creek Huonbrook Landcare volunteer committee and other members, landholders and managers. Funding and support from:

