

CURIE SCIENTIFIC
Practical Science



Budget Buster



Special
offer

NEW
Collection

100%
SATISFACTION

Exceeding
your
Expectations

PREMIUM PRODUCTS

www.curiescientific.co.uk

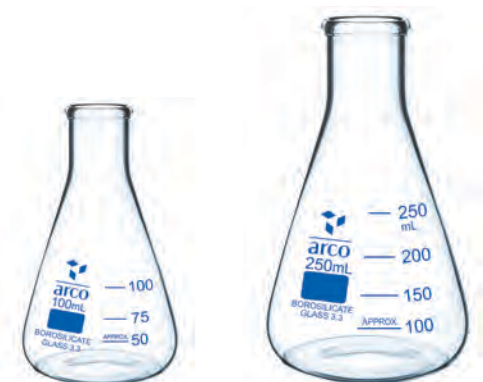


BEAKERS

LOW FORM, WITH SPOUT

- In accordance with IS 2619/ISO 3819 and DIN 12331.
- Clear marked scale makes marking easier in blue colour.
- Uniform wall thickness helps in ideal heating of liquids.

Cat No.	Description	Unit	Unit Rate
2060420/5	100ml	6	5.35
2060420/7	250ml	6	5.99



FLASKS, ERLLENMEYER, (CONICAL)

NARROW NECK

- In accordance with DIN/ISO 1773 and ASTM E-438 standards.
- Manufactured from Heat Resistant, Low Expansion 3.3 Borosilicate Glass
- Uniform wall thickness distribution makes these Flasks ideal for heating.
- The conical form makes them suitable for mixing liquids.
- The easy to read scale and large labeling field facilitate easy marking.
- Available in blue colour printing.

Cat No.	Description	Unit	Unit Rate
2064140/4	100ml	6	7.49
2064140/6	250ml	6	10.15



TEST TUBE

WITH RIM

- In accordance with ISO/DIN 4142.
- Manufactured from Heat Resistant, Low Expansion 3.3 Borosilicate Glass.
- The design of the tube include round bottom, thick walled and provided with rim.
- Uniformly drawn high quality tubing make the tube durable.

Cat No.	Description	Unit	Unit Rate
2067380/5A	16x125mm	100	28.99
2067380/7	24x150mm	50	26.95



CYLINDERS, POLYPROPYLENE, HEX

WITH RIM

- Moulded in polypropylene with prominent raised graduation for easy reading.
- Hexagonal base provides excellent stability.

Cat No.	Description	Unit	Unit Rate
2063150/1	10ml	24	12.49
2063150/2	25ml	12	7.20
2063150/3	50ml	12	8.82



EVAPORATING BASIN

ROUND FORM

- Chemical resistant. Round Bottom type dishes.
- Deep form design with lip.
- Useable temperature range up to, 1150°C (2102°F).
- Glazed inside except rim and part of outside area.

Cat No.	Description	Unit	Unit Rate
2060330	75cm ³ , 80mm Diameter	1	1.00



CRUCIBLE WITH LID

TALL FORM

- In accordance with DIN/ISO 1773 and ASTM E-438 standards.
- Manufactured from Heat Resistant, Low Expansion 3.3 Borosilicate Glass
- Uniform wall thickness distribution makes these Flasks ideal for heating.
- The conical form makes them suitable for mixing liquids.
- The easy to read scale and large labeling field facilitate easy marking.
- Available in blue colour printing.

Cat No.	Description	Unit	Unit Rate
2062760/6	50ml	10	19.99



SPATULA, WITH SPOON

STAINLESS STEEL

- One end flat and the other end in spoon form.
- Spoon end is ideal for crushing lumps etc., while the flat rectangular end is useful for scraping chopping etc.

Cat No.	Description	Unit	Unit Rate
2066360/2	150mm	1	1.95



GAS JARS

Soda glass

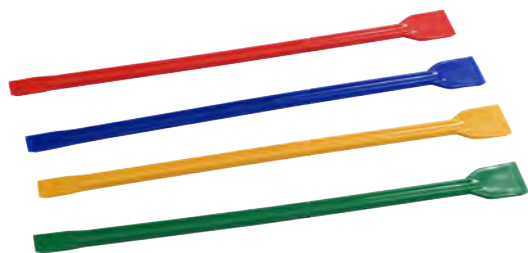
- For gas collection. Soda glass with ground flange, and heavy stable base.
- Supplied without lid. Sizes (height x diameter) available are

Cat No.	Description	Unit	Unit Rate
2065250/1	150x50mm	1	5.00

GAS JARS COVER

- Circular glass, ground on one side. Sizes (diameter) available are

Cat No.	Description	Unit	Unit Rate
2065280/4	90mm	5	3.49



POLICEMEN STIRRING RODS

LOW FORM, WITH SPOUT

- This is, in fact, a multipurpose product made of polypropylene, designed in the form of circular rods with flat ends, thus enables its use as stirrer as well as spatula.
- The two different shaped flattened ends of this rod form two small spatulas.
- Available in size 245×6mm (length × diameter).

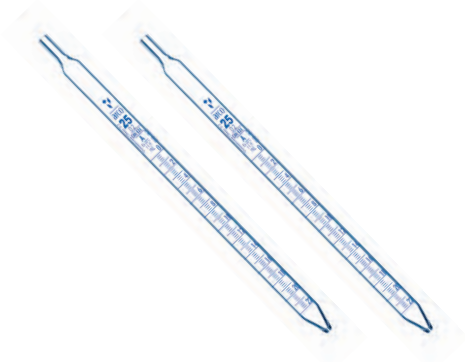
Cat No.	Description	Unit	Unit Rate
2066530	Policemen Stirring Rods	12	3.49



MASSES SET, SLOTTED AND HANGERS, BRASS

- Precision turned brass masses and hangers for accuracy. Hanger made of brass wire with hook for convenient suspension along with slotted masses while use.
- Specially designed slot of the masses prevents the masses slipping off the hangers at the same time ensuring their effortless placing and removal from the hanger.

Cat No.	Description	Unit	Unit Rate
2012920/1	One hanger of 10g and nine slotted masses of 10g each, total set of 10 masses of 100g.	1	7.24
2012920/3	One hanger of 100g and nine slotted masses of 100g each, total set of 10 mass of 1000g.	1	29.95



PIPETTES, GRADUATED, CLASS 'A'

SEROLOGICAL TYPE

- In accordance with DIN/ISO 835 Standard with Batch Certificate.
- Markings are provided in permanent blue stain diffused into the surface of the glass for better visibility and durability.
- Pipette is calibrated to deliver from any graduation line down to tip.

Cat No.	Description	Unit	Unit Rate
2065765/5	25ml	5	4.95



PIPETTES, DISPOSABLE

- Disposable, Pasteur type, soft plastic, single piece blown from resistant polythene, without teat.

Cat No.	Description	Unit	Unit Rate
5013150/3	Length 155mm, 3 x 0.5 cm ³ (capacity x graduation)	500	16.95



DISHES, PETRI, DISPOSABLE

- Disposable, transparent petri dishes are made of optically clear, non-toxic, polystyrene material.

Cat No.	Description	Unit	Unit Rate
2063660B	Petri Dishes, PS, 90mm, Triple Vent, 2 Compartment	20	4.55

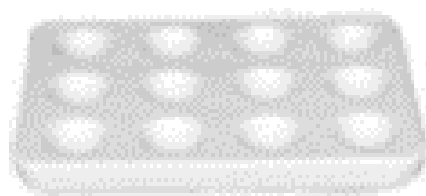


SPATULA, NUFFIELD, SS

Stainless Steel

- 'NUFFIELD' pattern, with a scoop at one end and a bent-up flat blade at the other.
- Length 140mm.

Cat No.	Description	Unit	Unit Rate
2066480	Spatula, Nuffield, Stainless Steel	10	4.95



TILES

- Polypropylene, white, 12 cavities

Cat No.	Description	Unit	Unit Rate
T1030680/3A	Tiels	10	9.99



TILES, ACID PROOF

- Square shaped porous tiles.
- Plain, Ceramic, Flat, White, (L×W×H): 100×100×12

Cat No.	Description	Unit	Unit Rate
2066855/1	Tiles	5	2.95



MICRO SLIDES, COVER SLIP

- Made of finest quality sheet glass having a uniform thickness and ground edges.
- Having 1, 2, or 3 cavities of 16mm diameter and 0.8mm deep.

Cat No.	Description	Unit	Unit Rate
4030150/3	Square shape, size 22×22mm	100	4.25



MICROSCOPE SLIDES

- Made of good quality sheet glass having a uniform thickness and ground edges.
- Sizes available are (length×breadth×thickness)

Cat No.	Description	Unit	Unit Rate
4030050/1	75×25×1.25mm	100	2.95



TEST TUBE STAND, Z-SHAPED

- Made of sheet metal, Z type, new design, single piece fabrication.
- One row of holes of 30mm diameter, the second row of holes of 25mm diameter and third row of hole of 16mm diameter.

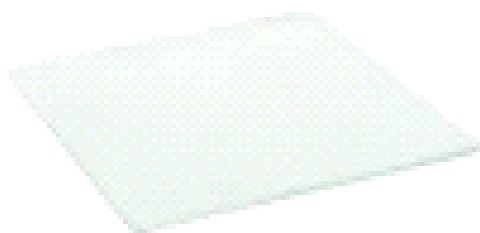
Cat No.	Description	Unit	Unit Rate
2073000	Test Tube Stand, Z-Shaped	1	5.02



BURNERS, BUNSEN, WITH STABILIZER TOP

- For Natural gas. Has air regulator and slot shaped orifice.
- Nickel plated brass mixing tube is mounted on metal base with a cutaway.
- Specially designed top for flame stabilization providing improved efficiency in the performance.
- Height 125mm, Dia 80mm, 8mm inlet.

Cat No.	Description	Unit	Unit Rate
2062070/2	Bunsen burner, Natural Gas	1	8.48



BENCH MATS

- Bench mats, (asbestos free), round edges 3 mm thick, 150 x 150 mm

Cat No.	Description	Unit	Unit Rate
000-100	Bench Mats	10	8.00



WIRE GAUZE, GI WITH CERAMIC CENTER

- Square shaped with ceramic center.
- Close mesh with folded edges.

Cat No.	Description	Unit	Unit Rate
2068280/2	150mm	5	4.95



TRIPOD STAND, TRIANGULAR, SS

- Triangular shaped top, made of Cast Iron.
- Lower end of legs covered with plastic cap to avoid scratching the work surface.

Cat No.	Description	Unit	Unit Rate
2073080/2	150 x 200mm (LxH)	1	3.25



RODS FOR RETORT STANDS

- Metal rods with one end threaded with shoulder ensures straight vertical, upright fit on any of the bases given above.
- The rods have reduced diameter at threaded portion that enables rod to sit flat support bases.
- All rods have rounded top and provided with a through hole just above the shoulder to permit insertion of tommy bar for tightening of rods to bases.

Cat No.	Description	Unit	Unit Rate
2071840/2	10x600mm (D x L), Thread M10	1	4.77



RETORT STAND BASE, HEAVY PATTERN

- Die-pressed, rectangular, steel base with 10x1.5 mm metric thread at the center of one of the shorter sides.
- Base is recessed at the bottom with two shorter sides having rubber feet for added stability and preventing damage to the work surface.

Cat No.	Description	Unit	Unit Rate
2071600/3	250 x 160mm	1	9.99



BOSS HEAD, SQUARE

- Die-cast alloy metal body, chrome plated, accepts square and tubular sections up to 16.5mm diameter at right angles to each other.
- Will also hold flat articles such as rulers, magnets, drawing board metal / wooden strips etc. Size (mm): 30 × 30 × 50

Cat No.	Description	Unit	Unit Rate
2070240	Boss Head, Square	1	2.95



CLAMPS, RETORT, THREE PRONGED

- Three Pronged, die-cast alloy metal, with rubber lined jaws for positive gripping of objects to be held.
- Metal screw for tightening the clamp jaws.
- Accepts articles up to 90mm diameter.
- Fitted with 135x8mm (LxD) rod.

Cat No.	Description	Unit	Unit Rate
2070440/1	With clamping screw of plated brass 1	4.95	



STOP WATCH, DIGITAL

Features:

- Quartz Timer
- Alarm function
- Activities
- Day of the week
- 1/100 second precision with Lap/cumulative timing
- Large LCD display with back-light for easy reading
- Time (12/24 Hours)
- Date
- AM-PM indicator

Cat No.	Description	Unit	Unit Rate
2014080	Stop Watch, Digital	1	8.95



TONGS, BEAKER

- Tongs, bowed, beakers 100 cm³ – 500 cm³ Metal tongs, Rubber coated arms.
- Max gripping diameter is 20cm.
- Overall length of tong 25cm approx.

Cat No.	Description	Unit	Unit Rate
2073840/2	Jaws covered with vinyl dipping	1	7.24



BEAKERS, POLYPROPYLENE, EURO DESIGN

- These superior quality beakers feature excellent clarity and very good chemical resistance.
- Moulded in Polypropylene, Euro Design.
- Autoclavable, with prominently raised graduations.
- Tapered spout facilitates easy pouring out.

Cat No.	Description	Unit	Unit Rate
5010800/1	25mL	10	5.37



CARBON RODS

- Carbon Rod

Cat No.	Description	Unit	Unit Rate
T2090240/3B	100x5mm	10	8.71
RRC8X200	200x8mm-Pr	2	4.52



WIRE GAUZE, GI WITH CERAMIC CENTER

- Square shaped with ceramic center.
- Close mesh with folded edges.

Cat No.	Description	Unit	Unit Rate
2068280/2	150mm	5	7.86



METAL BLOCK CALORIMETER

- A simple calorimeter facilitating quick experimental determination of the specific heat capacity of different metals.
- Comprises cylindrical metal blocks, each of equal mass adjusted to $1\text{kg} \pm 2\%$.
- Each metal block is drilled with two holes, a large central hole, about 12.5mm diameter to accept special immersion heater and a smaller hole about 7.5mm diameter to accept thermometer or temperature sensor.

Cat No.	Description	Unit	Unit Rate
1060660/1	Aluminum, Dia 76mm	1	23.28
1060660/2	Mild Steel, Dia 44mm	1	37.09
1060660/4	Brass, Dia 44mm	1	20.16



DISPLACEMENT VESSEL (OVERFLOW CAN), PLASTIC

- Comprises a plastic vessel with a spout.

Cat No.	Description	Unit	Unit Rate
1020150/1	250mL	1	2.95



MAGDEBURG HEMISPHERE, PLASTIC

- A simple and economical device for demonstrating the effect of atmospheric pressure.
- The apparatus consists of two plastic hemispheres about 100mm in dia, both having handles at their top.
- One of them has a plastic stopcock for pumping out air and releasing vacuum and a rubber O-ring seal inside.
- The lightweight plastic construction makes them easy to handle and convenient to use.
- Can be connected to any suitable vacuum pump for evacuation.

Cat No.	Description	Unit	Unit Rate
1021360	Magdeburg Hemisphere, Plastic	1	38.32



CONVECTION TUBE

- To show the convection currents in a heated liquid.
- Comprises a rectangular borosilicate glass tube of about 20mm OD with funnel shaped outlet for filling it with water or any other liquid.
- Its gentle heating produces convection current which can be clearly observed by inserting small amount of dye or any other indicator in it.

Cat No.	Description	Unit	Unit Rate
1060580/1	380 × 300mm	1	24.68



LESLIES CUBE

- Useful for qualitative activities in thermal radiation. The results can also be quantified using a suitable radiation sensor facilitating investigation of emission and absorption of radiation from different surfaces at a same temperature or radiation from a single surface at different temperatures (Stefan- Boltzman's Law).
- Comprises a sheet metal cube of sides about 130mm with opening at the top for pouring in water and inserting a thermometer through a holed rubber stopper. Each of the four vertical faces is finished black, varnished, roughened and polished.

Cat No.	Description	Unit	Unit Rate
1061080/2	Leslie's Cube, Superior, Made of Copper	1	41.33



MASSSES SET, SLOTTED, ZINC, WITH HANGER

- Slotted masses and metal hanger made of die cast zinc alloy.

Cat No.	Description	Unit	Unit Rate
2012680/5	Alloy slotted masses set - 100g	1	6.77
2012680/5	Alloy slotted masses - 10g	1	0.84
2012680/6	Alloy slotted masses - 20g	1	1.39
2012680/7	Alloy slotted masses - 50g	1	1.89
T2012680/A	Alloy slotted mass hangers - 10g	1	1.96
T2012680/c	Alloy slotted mass hangers - 20g	1	2.55
2012680/12	Alloy slotted mass hangers - 100g	1	3.99
T2012680/15	Iron mass hanger 1kg	1	13.88



MASSSES, HEXAGONAL, CAST IRON

- For large weighing requirements. Hexagonal masses of cast iron, well painted, with lifting ring.
- Within tolerances as per international standards. Masses available are:

Cat No.	Description	Unit	Unit Rate
2013400/4	500g	1	7.20



MASS HANGERS, STEEL

- Hanger made of steel wire with hook.

Cat No.	Description	Unit	Unit Rate
2013120/1	10G	1	1.81
2013120/4	100G	1	3.00



MAGNIFIER, FOLDING, PLASTIC CASE

- Magnifying lens fitted in plastic frame that folds into a plastic casing, superior quality.
- Configurations available are:

Cat No.	Description	Unit	Unit Rate
2030560/1	Magnifier with Two Lens, Magnification 7xDia 38mm	1	2.67



PLANE MIRRORS, GLASS, UNMOUNTED

- Unmounted, rectangular plain glass mirrors with ground edges. Silvered back with protective coating.
- Sizes (Length x Height) available are:

Cat No.	Description	Unit	Unit Rate
1110220/2	Mirror 50x75mm	10	3.60
1110220/10A	Mirror 100x50mm	10	5.70
1110220/5	Mirror 150x50mm	10	7.02



GLASS BLOCK, RECTANGULAR

- Made from moulded glass with polished surfaces. All angles accurately worked.
- For refraction experiments. Sizes (l x w x t) available are

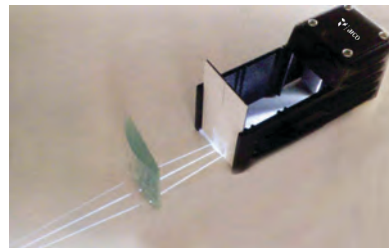
Cat No.	Description	Unit	Unit Rate
1110360/1	75x50x18mm	1	6.92
1110360/3	110x65x18mm	1	8.67



TUNING FORKS, SET OF 13

- Best quality plain shanks, with chromatic scale frequencies from C (256Hz) to C (512Hz).
- Complete set of 13 Tuning Forks.
- Tuning Fork size: 3/4" x 1/4".

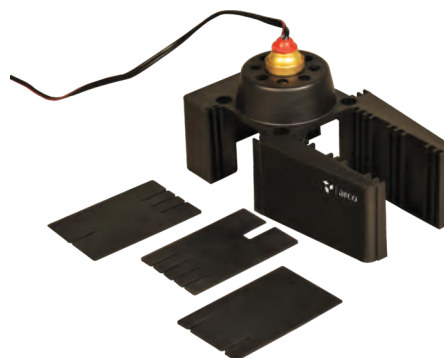
Cat No.	Description	Unit	Unit Rate
1120420/1	Supplier in Wooden Case. Nickel plated or blued steel, with frequencies marked.	1	43.03



LED RAY BOX

- No more burnt finger, this LED Ray box housed in a traditional diecast enclosure.
- Ultra cool – temperature.
- Long life LED – rated 10000 hours life.
- White light closer to real sun light.
- Provides better than most conventional 24W Ray boxes.
- Rays are more continuous with uniform intensity.
- Complete with power adaptor, Lens and Slit Plate.

Cat No.	Description	Unit	Unit Rate
1110710	Led Ray Box	1	56.13



RAY BOX

- Uses a standard light source for optics experiments. It can also be used to study the behaviour of light with lenses and refraction blocks.
- Contents:
 1. A Moulded plastic Ray Box with a light sources of 12V, 2A
 2. Moulded slits, set of 3, for various rays configuration
 3. 2 Side shields, made of aluminum
- Operates on 12V, 2A DC.

Cat No.	Description	Unit	Unit Rate
1110690	Ray Box	1	31.94



TONGS, CRUCIBLE, WITH BOW, MS

- Mild steel wire, rolled flat at joint, jaws corrugated inside.

Cat No.	Description	Unit	Unit Rate
2073600/1	Chrome Plated, Length: 150mm	1	1.67
2073600/2	Chrome Plated, Length: 200mm	1	1.79



TONGS, CRUCIBLE, STRAIGHT, MS

- Mild steel wire, rolled flat at joint, jaws corrugated inside.

Cat No.	Description	Unit	Unit Rate
2073560/1	Chrome Plated, Length: 150mm	1	1.76
2073560/2	Chrome Plated, Length: 200mm	1	2.14



TUBES, DELIVERY

- Borosilicate Glass 3.3.
- Outer diameter 6mm.
- 90 Degree bent.

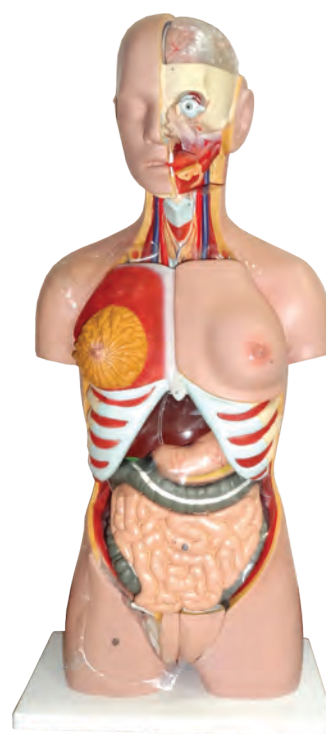
Cat No.	Description	Unit	Unit Rate
2067770/3	Tubes, Delivery	5	9.00



SAFETY SCREEN

- To avoid any chance of burning from chemical reaction and any other experiment which can cause injury at time of observing the results of that experiment.
- Polycarbonate panels (3) hinged, 610mm high, outer panels, 230 mm wide, centre panel 300 mm wide,
- Outer sides can flap across their vertical axis as per the requirement of the experimental set up.
- Folding assembly give an advantage to store it easily.

Cat No.	Description	Unit	Unit Rate
2110085	Safety Screen	1	27.71



CURIE SCIENTIFIC
Practical Science



www.curiescientific.co.uk