

REPAIR-RENEW-REFRESH

Please complete, tear off from the brochure, place in the sealed envelope, and mail this back to church or place in the Sunday collection basket. Thank you!

I would like to donate to the Repair-Renew-Refresh initiative by contributing:

_____ \$100 _____ \$250 _____ \$500
_____ \$1,000 _____ Other

(Contributions of \$500 or greater can be made in payments over six months.)

Please print:

Name: _____

Address: _____

City: _____ State: _____

Zip Code: _____

Email: _____

Phone: _____

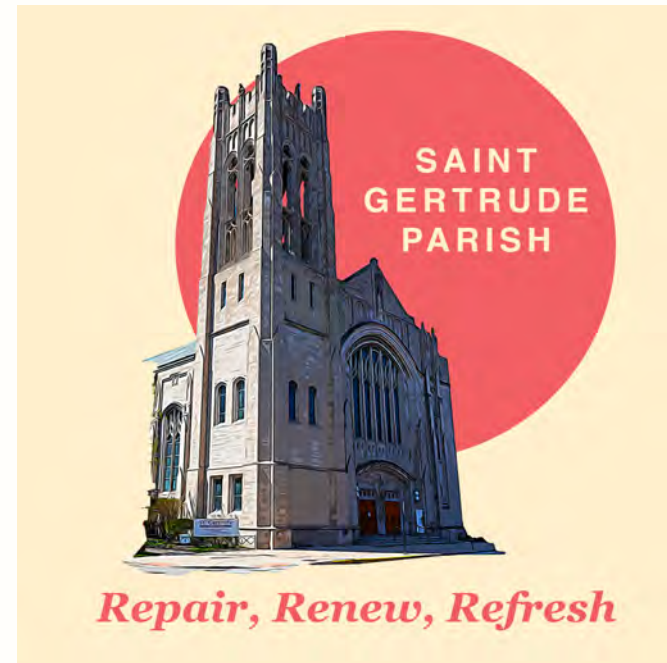
Envelope number (if you know it): _____



Pictured: Location of proposed handrail between the main floor to the sanctuary, ceiling damage, and loose roof tiles.



Give and gifts will be given to you; a good measure, packed together, shaken down, and overflowing, will be poured into your lap. For the measure with which you measure will in return be measured out to you. - Luke 6:38



St. Gertrude Chicago

1420 W. Granville Ave.

Chicago, IL 60660

773.764.3621

stgertrudechicago.org

ALL ARE WELCOME

We are pleased to announce that St. Gertrude Parish has been blessed with a \$100,000 gift from the Polk Bros. Foundation. This generous gift is an honorarium to a former St. Gertrude parishioner, Raymond Simon, who recently retired from the board of directors, having served since the inception of the Foundation. Ray directed this gift to St. Gertrude. We are deeply grateful for this unexpected donation and extend our sincere and heartfelt thanks to the Foundation and to Raymond Simon.



Installation of two handrails between the main floor of church to the sanctuary, and a handrail from the lower sanctuary level to the altar level to increase accessibility. *(Estimated cost = \$3,800)*

There is no shortage of projects to which we can apply these funds. In fact, the needed repairs and maintenance around our campus could easily double that amount. Therefore, to show our great gratitude for this most generous gift, we are launching an initiative to raise another \$100,000 from parishioner donations to repair, renew, and refresh our campus.

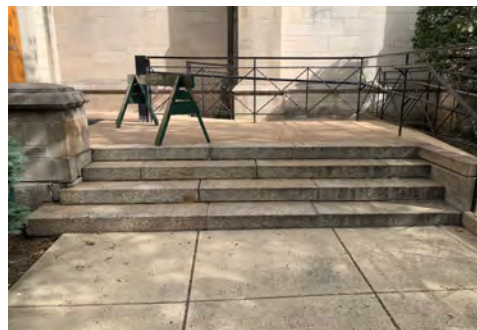


Re-carpeting the church. The carpeting is over 30 years old and is badly in need of replacement. *(Estimated cost = \$45,700)*

These funds will enable us to continue the mission of St. Gertrude by maintaining our buildings and supporting Catholic education. The much-needed repairs include:



Exterior repairs to the church and rectory roofs, and internal repairs from water damage. *(Estimated cost = \$76,775)*



Rebuilding the deteriorated entrance stairs to the parish hall/gym/classroom building and the stairs at the south (accessible) entrance to the church. *(Estimated cost = \$116,500)*



Additionally, we will establish the *St. Gertrude Catholic Education Support Fund* for parish families with children attending NCA in need of financial help to enroll, as well as to have funds available for families in crisis due to health, employment, or other unexpected situations.

You may make your donation by completing the Donation Form on the back of this brochure, enclosing your check with the form in the return envelope, and mail or drop it off at the rectory, in the Sunday Offertory, or online via GiveCentral using the link provided on our parish website, stgertrudechicago.org. Please prayerfully consider what you can give toward this challenge initiative. We sincerely appreciate your generosity and continued support.

We look forward to celebrating the attainment of our goal at our parish Feast of St. Gertrude Weekend on November 13-14!