

# SPORTSX



## PRINCIPLE

Enter the realm of slenderizing and physique sculpting with SPORTSX, the cutting-edge innovation designed to enhance blood flow, elevate metabolic function, and guarantee a svelte physique.

Harness the potent magnetic force of PEMF (Pulsed Electromagnetic Field) technology, which selectively targets neurons to fragmentize fat and cellulite nestled within skin, muscle, and blood tissues.





With just a 30-minute session, **SPORTSX** enables over 30,000 muscle contractions at a high frequency and intensity, a feat unattainable through regular workouts!

As extreme muscle engagement demands substantial energy, nearby adipocytes (fat cells) undergo natural apoptosis, effectively slimming fat layers.

SPORTSX-induced muscle movements safeguard joints and bones while fortifying abdominal or gluteal muscles, amplifying fiber count and size for accentuated body contours, revealing distinct "mermaid" and "V-line" silhouettes.

## WHAT SETS SPORTSX APART?

It's the sole method enabling patients to simultaneously build muscle and sculpt their physique, offering a sensation akin to a robust, healthful workout. Versatile for contouring, muscle gain, fat dissolution, refining vest lines, and elevating hips, it pioneers the globe's inaugural non-invasive hip-lifting technique, necessitating no recovery or pre/post treatment prep.

SPORTSX operates on concentrated, high-intensity electromagnetic energy, triggering thousands of robust muscle contractions in a single session, pivotal for enhancing muscle tone and robustness. By compelling muscle tissue to adapt to these extreme conditions via super-maximal contractions, it prompts profound internal structural changes, fostering muscle accumulation, tension, conditioning, and fat combustion.

Patients attain a leaner, more athletic physique by diminishing abdominal fat while constructing a muscular foundation beneath.

The recommended regimen comprises 20-30 minute sessions, with a minimum of 4 sessions spaced 2-3 days apart, tailored to individual goals by your provider.



**30**  
**MINS TREATMENT**  
**=**  
**20.000**  
**WORKOUTS**

**16%** Average increase  
in muscle mass

**19%** Average  
fat reduction



Building Muscles



Buttlift



Burning Fats



Abdomen Sculpting



Arms Firming



Thighs Firming



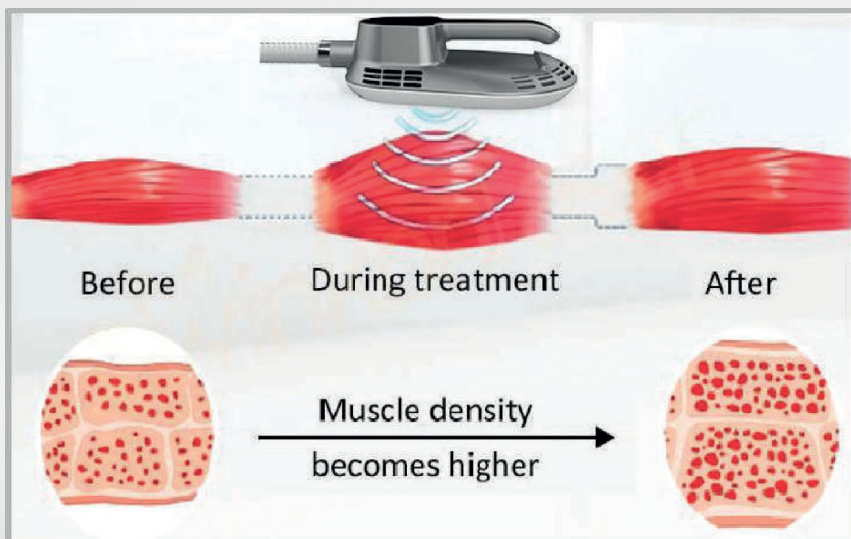


## FUNDAMENTAL TENETS

Utilizing PEMF (Pulsed Electromagnetic Field) technology, autologous muscles undergo an intensive regimen of continuous expansion and contraction, profoundly reshaping muscle structure internally. This process stimulates myofibril growth (muscle enlargement), triggering the production of new protein chains and muscle fibers (muscle hyperplasia), subsequently enhancing muscle density and volume through rigorous training.

Under PEMF technology, muscle contraction at its 100% limit initiates significant fatty acid decomposition, prompting the outflow of triglyceride-derived fatty acids and their accumulation within fat cells. Elevated fatty acid concentrations facilitate adipocyte apoptosis within weeks, naturally metabolizing them out of the body.

Thus, PEMF proves adept at simultaneously fortifying and enlarging muscles while diminishing fat stores. By maintaining a frequency range that precludes muscle relaxation between stimuli, muscles are compelled to remain in a contractive state for several seconds, fostering muscle development through sustained exposure to high-load conditions.





## ADVANTAGES

- No Downtime, No Hassle
- Non-Invasive Marvel
- Effortless 30-Minute Sessions
- Increased Muscle Volume and Strength
- Effortless Fat Burning
- Sculpting Your Arms
- Crafting Your Abs
- Toning Your Thighs
- Enhancing Your Buttocks
- Strengthening Your Hamstrings
- Unlocking the Power of Pelvic Muscles



## HANDPIECES



Can be used for Belly, Buttocks, and Thighs. (2 pcs)



Can be used for Thighs, Arms, and Legs. (2 pcs)  
(Optional)



Can be used for Urology, gynecology, and Postpartum repair.  
(Optional)



## SPECIFICATIONS

ELECTROMAGNETIC WAVE	0-7tesla
TOTAL POWER	2600W
FREQUENCY	F1:1-10Hz F2:1-100Hz
PULSE WIDTH	300us
VOLTAGE	110-220V 50-60/Hz
SYSTEM MODE	Sport mode / Gentle mode / Professional mode
SCREEN	10.4 inch
TREATMENT HANDLE	I-B1 、 II-B2
MACHINE SIZE	50*58*128cm
PACKAGE SIZE	82*58*122cm
NET WEIGHT	51kg
GROSS WEIGHT	91kg



**Tomorrow's Technologies.  
Today.**

[www.axicontechnologies.com](http://www.axicontechnologies.com)

© 2024 Axicon Technologies LLC - USA  
All rights reserved.

