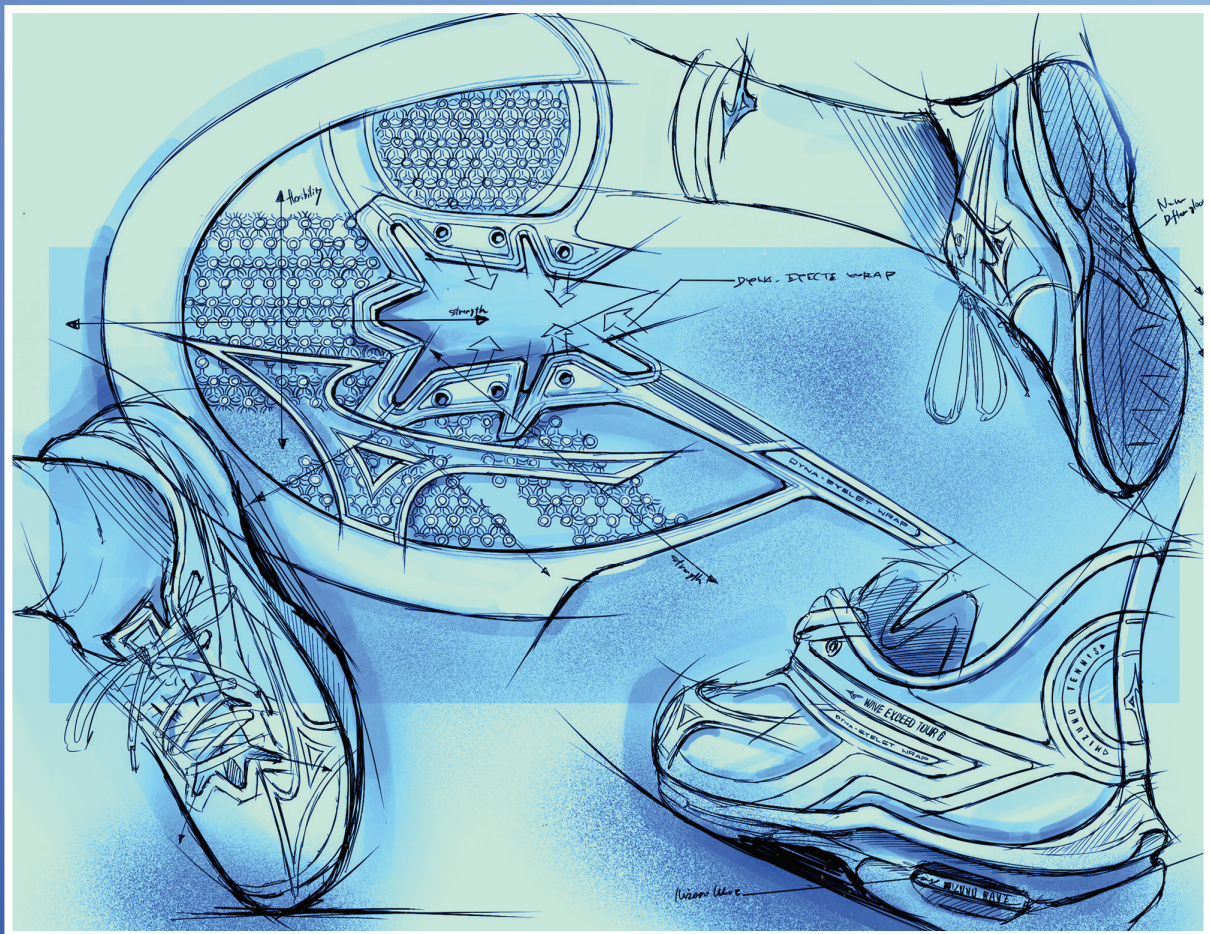




RACQUET SPORTS FOOTWEAR COLLECTION



SPRING SUMMER 25



TABLE OF CONTENTS

FOOTWEAR TECHNOLOGY	04-07
RACQUET SPORTS FOOTWEAR	08-19
<i>WAVE ENFORCE TOUR 2 AC</i>	08
<i>WAVE EXCEED TOUR 6 AC</i>	10
<i>WAVE EXCEED TOUR 6 CC</i>	12
<i>WAVE ENFORCE COURT AC</i>	14
<i>WAVE EXCEED LIGHT 2 AC</i>	16
ACCESSORIES	18-21
<i>SOCKS</i>	18
<i>HEADBANDS/SCRUNCHIES</i>	19
<i>HATS/VISORS</i>	20
<i>WRISTBANDS/SHOELACES</i>	21
TRAINING FOOTWEAR	22-23
<i>TS-01/REVOLT 2</i>	22



ALL-NEW WAVE ENFORCE TOUR 2 AC TECHNOLOGY

DuRubber

Improved outsole design which strikes proper balance between stability and lateral sliding, while maintaining professional-level durability. 6-Month Outsole Warranty.



Dyna-Heel Lock lite

Updated and streamlined technology that improves ankle/heel/shoe alignment during movement. Works with the lacing system to provide a secure fit and premium stability.



Mizuno Energy_{nxt}

3D-SOLID

Unique upper material redesigned to provide the highest level of softness and flexibility while maintaining durability and breathability.



Mizuno Energy_{nxt}

Next generation of Mizuno Energy midsole material, designed to maximize energy return and cushioning for optimum performance.



MIZUNO WAVE

MIZUNO WAVE® Technology provides added ankle stability and shock re-distribution for quick, explosive movements on court.



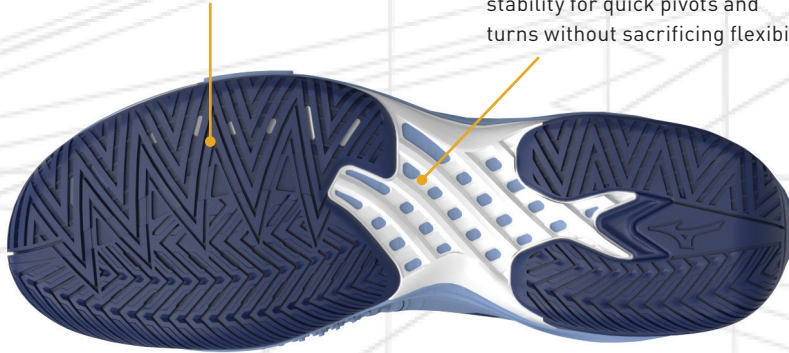
An exceedingly lightweight midsole material with excellent comfort and resilience properties.



WAVE EXCEED TOUR 6 TECHNOLOGY

DuRubber

Improved outsole design which strikes proper balance between stability and lateral sliding, while maintaining professional-level durability. 6-Month Outsole Warranty.



D-Flex Groove

Enhanced diagonal groove in the mid-foot area enabling greater stability for quick pivots and turns without sacrificing flexibility.



DYNA-EYELET WRAP

Eyelet structure wrapping the entire foot, providing a secure fit even in the most explosive movements.

3D-SOLID

Unique upper material redesigned to provide the highest level of softness and flexibility while maintaining durability and breathability.



Mizuno Energy_{nxt}

Next generation of Mizuno Energy midsole material, designed to maximize energy return and cushioning for optimum performance.



MIZUNO WAVE

MIZUNO WAVE[®] Technology provides added ankle stability and shock re-distribution for quick, explosive movements on court.

PowerC

An exceedingly lightweight midsole material with excellent comfort and resilience properties.



WAVE ENFORCE COURT TECHNOLOGY

X10

Targeted and lightweight outsole material designed to provide durability specifically where it is needed.



MizunoEnergy

UAICX

Light, evolutionary insole board delivers a more comfortable and cushioned ride with higher rebound, delivering the most energized experience underfoot.



MizunoEnergy

High rebound midsole material that is designed to improve athletes' energy return ratio to deliver highest rebound for optimum performance.



MIZUNO WAVE

MIZUNO WAVE® Technology provides added ankle stability and shock re-distribution for quick, explosive movements on court.

PowinC

An exceedingly lightweight midsole material with excellent comfort and resilience properties.



WAVE EXCEED LIGHT 2 TECHNOLOGY

X10

Targeted and lightweight outsole material designed to provide durability specifically where it is needed.



Uaics

Light, evolutionary insole board delivers a more comfortable and cushioned ride with higher rebound, delivering the most energized experience underfoot.

ENGINEERED MESH

A unique upper material providing the highest level of softness and durability, while maintaining breathability.



MizunoEnergy

High rebound midsole material that is designed to improve athletes' energy return ratio to deliver highest rebound for optimum performance.



MIZUNO WAVE

MIZUNO WAVE® Technology provides added ankle stability and shock re-distribution for quick, explosive movements on court.

Power

An exceedingly lightweight midsole material with excellent comfort and resilience properties.

ALL-NEW WAVE ENFORCE TOUR 2 AC

MSRP \$150.00 MAP \$144.95

NEW
MODEL

FEATURES

- MIZUNO WAVE® • MIZUNO ENERGY NXT • MIZUNO ENERGY FOAM • POWNCE • 3D-SOLID • DURUBBER • DYNA-HEEL LOCK LITE
- OUTRIGGER OUTSOLE

Designed for the advanced tennis or pickleball player, the ALL-NEW WAVE ENFORCE TOUR 2 AC is the ideal shoe for powerful competitors looking to enforce their will on their opponents. Equipped with the new MIZUNO ENERGY NXT foam throughout the footbed, the Enforce Tour 2 provides high energy return and plush cushioning for quick transitions without added weight. The DuRubber outrigger outsole supports forceful rotational movement, maximizing stroke power and footwork stability, and works in conjunction with a redesigned upper blend of CPU and mesh to produce a professional level of durability. The redesigned Dyna-Heel Lock Lite system improves the fit and alignment of the ankle and heel, further enhancing stability and maneuverability.

6-MONTH OUTSOLE WARRANTY

M 550094.004S White / Neo Mint



W 550095.005H White / Frontier Blue



M

550094.004S



550094.BW00



550094.0090



SIZES

7-12, 13

WEIGHT

13.2oz

STYLE

550094.004S
550094.BW00
550094.0090

COLOR

White / Neo Mint
Bellwether Blue / White
White / Black

IN-STORE DATE

January 2025
March 2025
January 2025

W

550095.005H



550095.5L00



550095.0073



SIZES

6-11

WEIGHT

10.9oz

STYLE

550095.005H
550095.5L00
550095.0073

COLOR

White / Frontier Blue
Bel Air Blue / White
White / Silver

IN-STORE DATE

January 2025
March 2025
January 2025

WAVE EXCEED TOUR 6 AC

MSRP \$140.00 MAP \$134.95

NEW COLORS

FEATURES

- MIZUNO WAVE®
- MIZUNO ENERGY NXT
- MIZUNO ENERGY SOCKLINER
- POWNCE
- DYNA-EYELET WRAP
- D-FLEX GROOVE
- 3D-SOLID
- DURUBBER

Re-engineered from the ground up, the WAVE EXCEED TOUR 6 AC continues to set the standard for premium performance racquet sports footwear. The next generation of MIZUNO ENERGY, ENERGY NXT - the lightest and most responsive ENERGY material yet - is integrated in the midsole at the forefoot to deliver explosive speed and change of direction for optimum performance and ultimate energy return. An updated MIZUNO WAVE® plate and an expanded D-Flex Groove greatly increase lateral stability and help turn your power into speed around the court. One of the lightest and fastest shoes on the market, the Wave Exceed Tour 6 utilizes the new Dyna-Eyelet Wrap and a redesigned and cushioned tongue to elevate the level of comfort and fit for the advanced tennis and pickleball player. The new DuRubber outsole provides the ability to both slide and stop while maintaining the luxury of a **6-MONTH OUTSOLE WARRANTY**.

M 550051.0053 White / India Ink



W 550052.005H White / Frontier Blue



M

550051.0053



SIZES

7-12, 13

STYLE

550051.0053
550051.BW00
550051.005Q

550051.BW00



WEIGHT

11.4oz

COLOR

White / India Ink
Bellwether Blue / White
White / Dress Blue

550051.005Q



IN-STORE DATE

January 2025
March 2025
January 2024

W

550052.005H



SIZES

6-11

STYLE

550052.005H
550052.5L5U
550052.0073

550052.5L5U



WEIGHT

9.6oz

COLOR

White / Frontier Blue
Bel Air Blue / Bellwether Blue
White / Silver

550052.0073



IN-STORE DATE

January 2025
March 2025
January 2024

WAVE EXCEED TOUR 6 CC (Clay Court Outsole)

MSRP \$140.00 MAP \$134.95

FEATURES

MIZUNO WAVE® • NXT MIZUNO ENERGY • MIZUNO ENERGY SOCKLINER • POWNCE • DYNA-EYELET WRAP • D-FLEX GROOVE • 3D-SOLID • DURUBBER

Re-engineered from the ground up, the WAVE EXCEED TOUR 6 CC (Clay Court outsole) continues to set the standard for premium performance racquet sports footwear. The next generation of MIZUNO ENERGY, ENERGY NXT - the lightest and most responsive ENERGY material yet - is integrated in the midsole at the forefoot to deliver explosive speed and change of direction for optimum performance and ultimate energy return. An updated MIZUNO WAVE® plate and an expanded D-Flex Groove, greatly increase lateral stability and help turn your power into speed around the court. One of the lightest and fastest shoes on the market, the Wave Exceed Tour 6 utilizes the new Dyna-Eyelet Wrap and a redesigned and cushioned tongue to elevate the level of comfort and fit for the advanced tennis and pickleball player. The new DuRubber outsole provides the ability to both slide and stop while maintaining outstanding durability.

M 550091.005Q White / Dress Blue



W 550092.0073 White / Silver



M

550091.005Q



SIZES

7-12, 13

WEIGHT

11.4oz

STYLE

550091.005Q

COLOR

White / Dress Blue

IN-STORE DATE

July 2024

W

550092.0073



SIZES

6-11

WEIGHT

9.6oz

STYLE

550092.0073

COLOR

White / Silver

IN-STORE DATE

July 2024

WAVE ENFORCE COURT AC

MSRP \$120.00 MAP \$114.95

NEW
COLORS

FEATURES

MIZUNO FOAM WAVE® • MIZUNO ENERGY • POWNCE • U4ICX • X10 RUBBER

Inspired by the plush performance of the Wave Enforce Tour series, the WAVE ENFORCE COURT AC strikes the perfect balance between lightweight comfort and controlled stability. Perfect for tennis or pickleball, the Enforce Court utilizes MIZUNO ENERGY and the MIZUNO FOAM WAVE plate to provide excellent cushioning and energy return while the flat, outrigger X10 Rubber outsole enhances on-court stability and durability. Frequent players looking for an incredibly lightweight stability shoe with exceptional speed and comfort will find everything they need in the Wave Enforce Court AC.

M 550075.008Z White / Vintage Indigo



W 550076.005H White / Frontier Blue



M

550075.008Z



SIZES

7-12, 13

STYLE

550075.008Z
550075.0090

550075.0090



WEIGHT

10.9 oz

COLOR

White / Vintage Indigo
White / Black

IN-STORE DATE

January 2025
August 2024

W

550076.005H



SIZES

6-11

STYLE

550076.005H
550076.00PS

550076.00PS



WEIGHT

8.8 oz

COLOR

White / Frontier Blue
White / Parisian Blue

IN-STORE DATE

January 2025
August 2024

WAVE EXCEED LIGHT 2 AC

MSRP \$115.00 MAP \$109.95

NEW
COLORS

FEATURES

MIZUNO FOAM WAVE® • MIZUNO ENERGY • POWNCE • U4ICX • X10 RUBBER

Designed for the active tennis or pickleball player, the WAVE EXCEED LIGHT 2 AC continues its tradition of offering the utmost in lightweight, cushioned comfort. No longer does a player need to choose between comfort and weight, as the Wave Exceed Light 2 is one of the lightest and most comfortable shoes on the market. Featuring MIZUNO ENERGY Foam and a unique MIZUNO FOAM WAVE plate in the midsole, the Wave Exceed Light 2 combines elevated energy return with a plush, yet supportive cushioning experience.

A comfort last with a spacious width, along with an engineered mesh upper, combine to provide players of all levels with a premium level of comfort, flexibility and feel.

M 550045.BW00 Bellwether Blue / White



W 550046.00BW White / Bellwether Blue



M

550045.BW00



550045.00MG



SIZES

7-12, 13

WEIGHT

10.3oz

STYLE

550045.BW00
550045.00MG

COLOR

Bellwether Blue / White
White / Metallic Grey

IN-STORE DATE

March 2025
July 2023

W

550046.00BW



550046.00MG



SIZES

6-11

WEIGHT

8.9oz

STYLE

550046.00BW
550046.00MG

COLOR

White / Bellwether Blue
White / Metallic Grey

IN-STORE DATE

March 2025
July 2023

VITAL CREW SOCK 3-PACK

STYLE: 480209 / MSRP \$20.00 / SIZE: S-XL

FEATURES: With a padded heel and forefoot and a vented forefoot, this crew sock is the ultimate accessory in comfort and stability. **3-pair**



9090 Black



0000 White

VITAL LOW SOCK 3-PACK

STYLE: 480204 / MSRP \$18.00 / SIZE: S-XL

FEATURES: With a padded heel and forefoot and a vented forefoot, this low sock is the ultimate accessory in comfort and stability. **3-pair**



9090 Black



0000 White

RUNBIRD CREW SOCK

STYLE: 480189 / MSRP \$20.00 / SIZE: S-L

FEATURES: With a padded heel and forefoot and a vented forefoot, this crew sock is the ultimate accessory in comfort and stability. **1-pair**



9090 Black



0000 White

**SOCK
SIZE
GUIDE**

SHOE SIZE	S	M	L	XL
Youth	1-6	-	-	-
Women's	4-7	6.5-10	10-13	13+
Men's	-	6-9	9-12	12-15

KNOTTED HEADBAND

STYLE: 480206 / MSRP \$15.00 / SIZE: OSFA

FEATURES: The Knotted Headband comes with features like Mizuno DRYLITE® Technology, 4-way stretch material, and a printed MIZUNO RUNBIRD® logo. The features in this headband allow you to personalize the fit and ensure your focus is on the match, not your hair.



9090 Black



5151 Navy



1010 Red



5252 Royal

PLAYER HEADBAND

STYLE: 480205 / MSRP \$15.00 / SIZE: OSFA

FEATURES: The Player Headband features moisture-wicking fabric, MIZUNO RUNBIRD®-branded silicon grips on the inside, and an improved fit that will stay in place, even during the longest rallies.



9090 Black



5151 Navy



1010 Red



5252 Royal

SCRUNCHIE 2-PACK

STYLE: 480208 / MSRP \$15.00 / SIZE: OSFA

FEATURES: The new Scrunchie 2-pack features Mizuno DRYLITE® technology and 4-way stretch material, making it a breathable and lightweight accessory, so you can focus on the match. **2-pack**



9090 Black



5151 Navy



1010 Red



5252 Royal

MIZUNO DIAMOND TRUCKER HAT

STYLE: 370347 / MSRP \$32.00 / SIZE: OSFA

FEATURES: Be casual and rep Mizuno with this classic trucker hat. High quality construction that features 3D embroidery and a snapback closure for a precise fit.



BCBC Black-Camo



9000 Black-White



1051 Red-Navy



9100 Grey-White



5100 Navy-White



1000 Red-White



5200 Royal-White

TOUR ADJUSTABLE LW HAT

STYLE: 260327 / MSRP \$30.00 / SIZE: OSFA

FEATURES: This unstructured, low-profile hat from Imperial features a lightweight, breathable and moisture-wicking polyester fabric. It includes an adjustable hook and look closure for easy fitting. 100% polyester.



00CB White-Cobalt



0040 White-Green



0090 White-Black



0200 Fog-White



5110 Navy-Red



5100 Navy-White



9000 Black-White

TOUR SUN HAT

STYLE: 260346 / MSRP \$36.00 / SIZE: M, L

FEATURES: The Mizuno Sun Hat is lightweight and ventilated for comfort. It comes with an adjustable chin strap that can be easily removed. The fit is unstructured. 100% polyester
Medium = 7 1/8" , Large = 7 1/2 "



0051 White-Navy



9M90 Grey-Black

MIZUNO DIAMOND VISOR

STYLE: 370275 / MSRP \$32.00 / SIZE: OSFA

FEATURES: Designed to stay cool and dry with a multi-layered headband that absorbs sweat, while the mini pique weave fabric wicks away moisture and dries quickly. Features heat transfer logos with adjustable hook and loop closure.



9091 Black-Grey



9152 Grey-Royal



5100 Navy-White



5200 Royal-White



0092 White-Charcoal

2 INCH WRISTBANDS G2

STYLE: 370232 / MSRP \$8.00 / SIZE: OSFA

FEATURES: Absorbent, comfortable and made with a durable fabric that is machine washable and designed to hold up to the rigors of the game. Features an embroidered MIZUNO RUNBIRD® Logo for a premium look. **2-pack**



5252 Royal



9090 Black



1212 Cardinal



4141 Forest



5151 Navy



2020 Orange



1313 Pink



6060 Purple



1010 Red



0000 White

5 INCH WRISTBANDS G2

STYLE: 370233 / MSRP \$11.00 / SIZE: OSFA

FEATURES: Made with a soft, stretchable fabric to provide a comfortable, secure fit. Machine washable and featuring an embroidered MIZUNO RUNBIRD® Logo to give you a professional look. **1-pack**



9090 Black



1010 Red



5151 Navy



5252 Royal



0000 White

SHOELACE

STYLE: 370201 / MSRP \$7.00 / SIZE: 47" & 51"

FEATURES: Available in a wide array of color options, our high-quality shoelace is ideal as a replacement or a great way to add a premium pop to your footwear.



9090 Black



7070 Carolina Blue



4141 Forest



5151 Navy



2020 Orange



4949 Patina Green



1313 Pink



6060 Purple



1010 Red



5252 Royal



0000 White



3030 Yellow

TS-01 TRAINING SHOE MIZUNO COB

CARRY OVER

M: 520021 MSRP: \$105.00 / WEIGHT: 10.2 oz. / SIZE: 7-13,14,15
 W: 520022 MSRP: \$105.00 / WEIGHT: 8.5 oz. / SIZE: 6-12

FEATURES: This brand-new model is Mizuno's most cushioned training shoe. Balance is strength and the Mizuno TS-01 training shoe utilizes innovative performance research to help improve body awareness and foot sensitivity to deliver a sophisticated and advanced training experience. Designed with a full flat outsole and lateral outrigger, as well as a lateral rubber wall, the TS-01 offers ultimate stability. Infused with Mizuno COB technology, a patent-pending design featuring sensor pod clusters that provide enhanced feedback from the feet, the TF-01 ultimately allows you to pursue improved athletic performance.



MEN'S



STYLE
 9000
 9100



COLOR
 Black / White
 Grey / White

WOMEN'S



STYLE
 9100

COLOR
 Grey / White

REVOLT 2 TRAINING SHOE MizunoEnergy

M: 520017 MSRP: \$90.00 / WEIGHT: 9.3 oz. / SIZE: 6.5-13,14
 W: 520018 MSRP: \$90.00 / WEIGHT: 8.5 oz. / SIZE: 5.5-11.5

FEATURES: Perfect for the player or coach seeking a comfortable, stylish option whether traveling, in the gym, or on a run. Mizuno's new WAVE REVOLT 2 uses a breathable AIRmesh upper to provide a superior feel, mixed with an ultra soft and responsive MIZUNO ENERGY (FOAM) midsole layer that provides maximum comfort while running.



MEN'S



STYLE
 9000

COLOR
 Black / White

WOMEN'S



STYLE
 9000

COLOR
 Black / White



MIZUNO COB

C.O.B . - CENTER OF BALANCE

MIZUNO COB technology is designed to improve reaction speed and balancing capabilities as part of a consistent training routine. Training shoes featuring MIZUNO COB can increase foot sensitivity and may contribute to improved balance and reaction time in athletes. This proprietary technology accurately transmits information to the sole of the foot via activation bumps molded into the surface of the midsole, which is linked with the outsole.

BALANCE IS STRENGTH



Mizuno USA, Inc.
3155 Northwoods Parkway
Peachtree Corners, GA 30071

Phone 800.966.1234
Toll Free 800.333.7888
Fax 800.966.1235

www.mizunousa.com



Printed on recycled FSC-certified paper using 99.5% volatile organic compound (VOC) free ink.