

Capability Statement



A PROFESSIONAL APPROACH



Robust design and equipment selection; extensive collaboration with our clients, design partners, and suppliers; and the application of proven construction and project management processes ensure each project we undertake continues our track record of meeting or exceeding client expectations.



We put our long-term customer value philosophy into practice through a methodology that makes design, materials, equipment, and manufacturing decisions that consider the full project lifecycle from planning, through execution, to operation. These decisions:

- Benefit from our own vessel operations and maintenance experience to help ensure practicality and reliability for the end user;
- Respond to our customer's inputs – including preferences, experiences, and opinions – gained through regular, open client contact; and
- Develop through, and recognise, opportunities for product improvement that we proactively identify and implement even when not contractually required.

The combination of our in-house skill set, which covers virtually all aspects of vessel construction; proven processes and suppliers; an organisation wide commitment to quality; and experienced management with close oversight of all activities, enables us to consistently realise our philosophical goals in successful new, modified, or refurbished vessels

This includes the many benefits of our ability to directly liaise, daily, with Southerly Designs, experienced vessel designers who are co-located at our premises. This helps to ensure the best possible alignment of engineering and manufacturing solutions.



Our company philosophy has always centered on a very basic concept: Integrity First. In all interactions with customers, employees, and vendors, we do what we say we will do.

Always have, always will



WHAT WE DO



Since 1994, TP Marine has consistently demonstrated the technical, commercial, project management, customer service, and financial performance that underpins our long standing success in:

- Work boat building;
- maintenance and
- other marine services and advice.

This includes working on vessels constructed from aluminium, fibreglass / composites, and HDPE and used for commercial, government, and recreational pursuits.



We have virtually all the trades and skills necessary to build highly sophisticated vessels in-house.

OUR CAPABILITY



Our in-house capabilities include virtually all trades and skills relevant to our activities.

This includes:

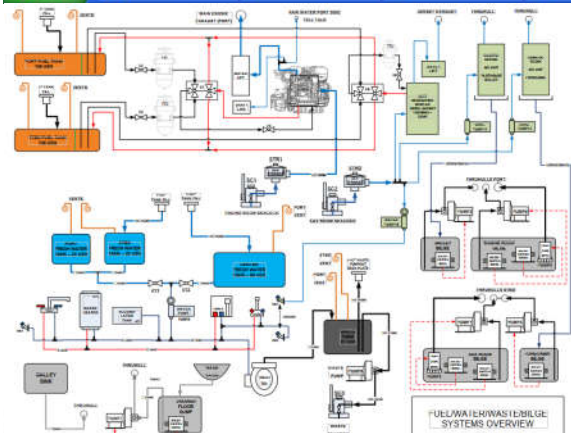
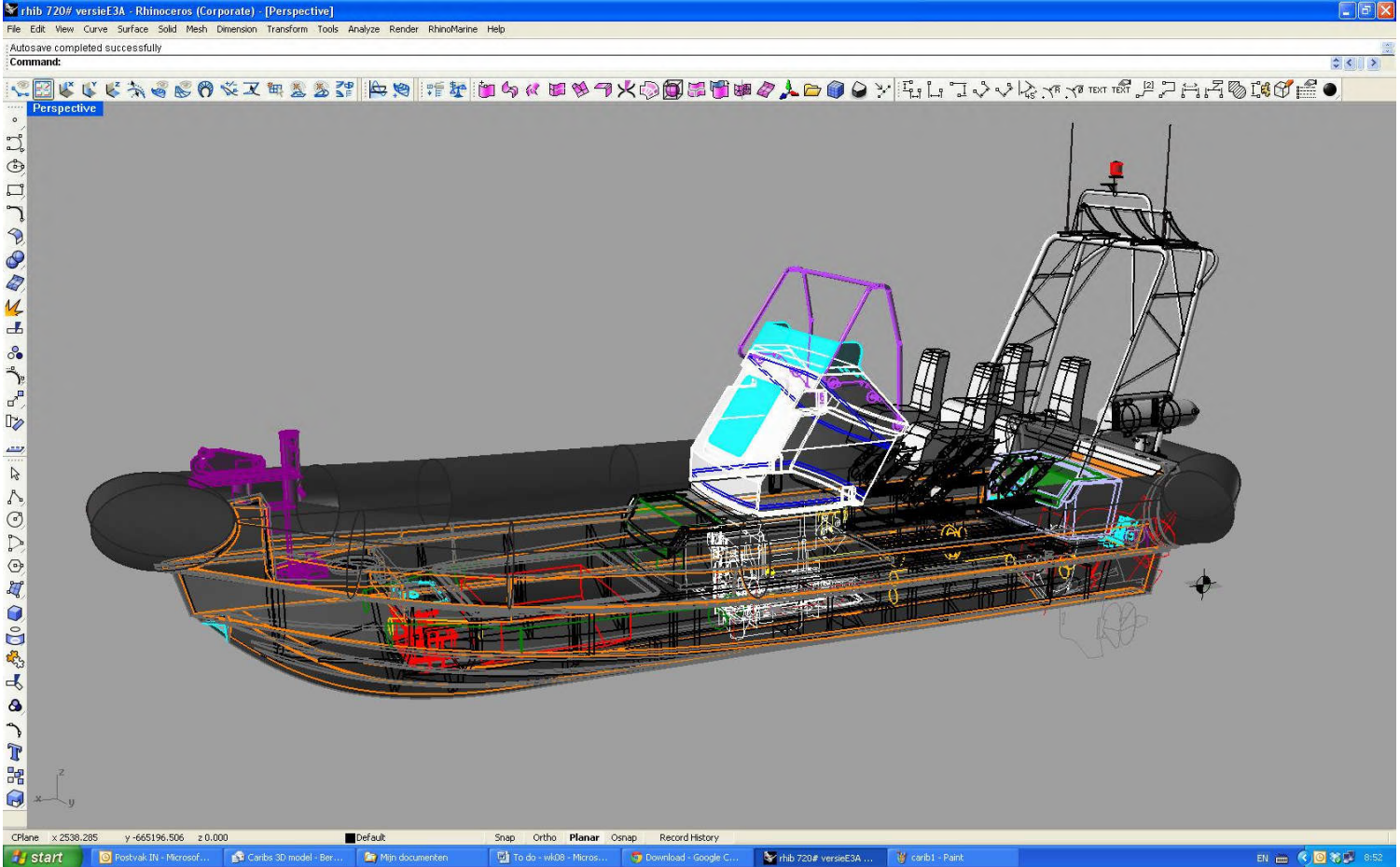
- Fabrication in aluminium, composites, and HDPE
- Engineering (mechanical, hydraulic, liquid systems);
- Electrical and electronics installation;
- Interior fitout;
- Armouring ;
- Mill spec Communications and camera's;
- System commissioning and testing;
- Sea trials and delivery.

We have specific expertise in high tech composites, manufacturing wheelhouses and other structures for both our own and other boatbuilders' projects.



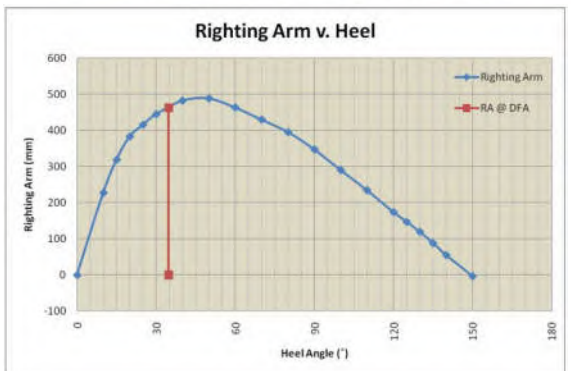
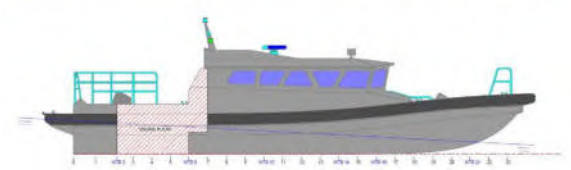
World Class through design, technology & dedication





PARTICULARS OF CONDITION

| Item | No. Off | % On Board | Individual Weight (kg) | Total Weight (kg) | LCG (m) | VCG (m) | TCG (m) |
|------------------------|---------|------------|------------------------|-------------------|---------|---------|---------|
| Lightship with Margins | | | | | | | |
| Lightship with Margins | 1 | 100% | 10216 | 10216 | 4.69 | 1.04 | 0 |
| | | | | 10216 | 4.692 | 1.040 | 0 |



WORKING WITH TECHNOLOGY

TP Marine utilises state of the art Rhinoceros 3D™ 3-dimensional computer aided marine engineering software to develop its craft and components.

- High Density Polyethylene (HDPE);
- Aluminium
- Combination construction
- Advanced composite

In house electrical engineering design and development keeps TPM at the forefront of electrical systems engineering for commercial RIB's and workboats, focusing on system reliability and maintainability, adhering to relevant international standards at all times.

“
State of the art Rhinoceros 3D™ 3-dimensional computer aided engineering software
 ”

PROJECTS COMPLETED



Project:
Fast Raiding Interception Special Forces Craft, RHIB type,

Particulars:

- Client: Portuguese Navy Special Forces
- Structure: Advanced composite
- Length: 10 Meters
- Speed: 50 Knots
- Propulsion: Twin Volvo Penta to Rolls Royce Waterjets
- Special equipment: Self-Righting, Mill. Spec radios
- No. Units delivered: 3
- Classification: Lloyds



PROJECTS COMPLETED



Project:
Crew Transfer Vessels for Offshore wind – Operating North Sea

Particulars:

- Client: Windcat Workboats LTD
- Structure: Aluminium and some units Advanced composite
- Length: 11 Meters
- Speed: 28 - 35 Knots
- Propulsion: Twin Volvo Penta to sterndrives or Hamilton waterjets
- Special equipment: GMDSS
- No. Units delivered: 6
- Classification: MCA - code (12 pax, 60 nm. Offshore)



PROJECTS COMPLETED



Project:
Fast Interception Craft, RHIB type, slipway launch and recovery

Particulars:

- Client: Netherlands Coast Guard , Dutch Antilles
- Structure: Advanced composite
- Length: 8 Meters
- Speed: 45 Knots
- Propulsion: Single Volvo Penta to sterndrive
- Special equipment: Self-Righting, KEVLAR hull protection for slipway entry
- No. Units delivered: 6
- Classification: Lloyds



PROJECTS COMPLETED



Project:
Netherlands Navy - Guard Vessels

Particulars:

- Client: Royal Netherlands Navy
- Structure: Aluminium
- Length: 11 Meters
- Speed: 35 Knots
- Propulsion: Twin Volvo Penta to Hamilton waterjets
- Special equipment: Mill. Spec radios
- No. Units delivered: 2
- Classification: Lloyds



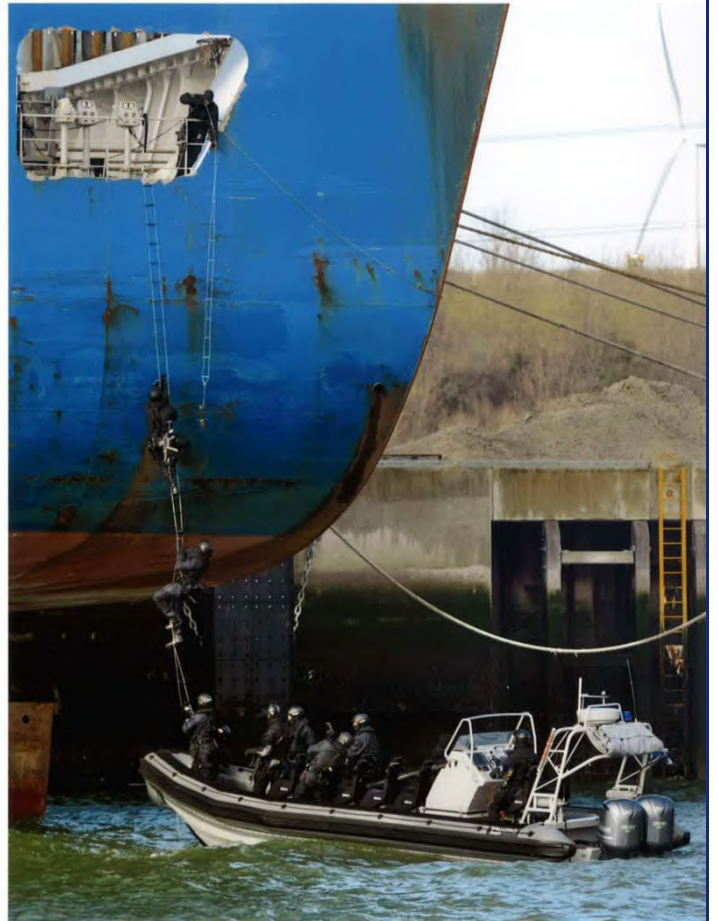
PROJECTS COMPLETED



Project:
Special Forces Fast Interception Craft, RHIB type,

Particulars:

- Client: Dutch Police Force
- Structure: Advanced composite
- Length: 10 Meters
- Speed: 55 Knots
- Propulsion: Twin Yamaha 350's outboard
- Special equipment: Self-Righting, KEVLAR hull, armoured console
- No. Units delivered: 2
- Classification: Lloyds



PROJECTS COMPLETED



Project:
High Speed Patrol Craft – 100 Nm Offshore Operation

Particulars:

- Client: Norwegian Customs
- Structure: Aluminium
- Length: 13 Meters
- Speed: 45 Knots
- Propulsion: Twin Volvo Penta to stern drives
- Special equipment: Heated deck, fuel tanks and railings to operate @ - 20 degrees Celsius, special sensors and displays allowing for high speed navigation at night.
- No. Units delivered: 2
- Classification: DNV



PROJECTS COMPLETED



Project:
Fast Interception Craft, RHIB type, slipway launch and recovery

Particulars:

- Client: Netherlands Coast Guard , Dutch Antilles
- Structure: Advanced composite
- Length: 8 Meters
- Speed: 45 Knots
- Propulsion: Single Volvo Penta to sterndrive
- Special equipment: Self-Righting, KEVLAR hull protection for slipway entry
- No. Units delivered: 6
- Classification: Lloyds



PROJECTS COMPLETED



Project:
High Speed Boarding Craft

Particulars:

- Client: KSA
- Structure: Aluminium
- Length: 14 Meters
- Speed: 75 Knots
- Propulsion: Twin Cummins 800HP to Rolls Royce waterjets
- Special equipment: Government rated engines, high power output, hybrid fender system
- No. Units delivered: 6
- Classification: DNV



PROJECTS COMPLETED

Project:
High Speed USV – Observation and Maritime Security

Particulars:

- Client: Aeronautics Defense Systems
- Structure: GRP
- Length: 8 Meters
- Speed: 35 Knots
- Propulsion: Volvo Penta to Hamilton jet
- Special equipment: Full remote operated w/ long-range IO/IR camera system,
- No. Units delivered: 1
- Classification: CE-B



*Europe's First USV
built for aeronautics
Defence Systems in*

PROJECTS COMPLETED



Project:
Multi-Hull – Shallow water UXO Precision Survey

Particulars:

- Client: Pro-Marine Survey
- Structure: GRP, Kevlar reinforced keel
- Length: 11.5 Meters
- Speed: 40 Knots (transit)
- Propulsion: Twin Yamaha 350's
- Special equipment: Gradiometer in combination with EMI sensor package
- No. Units delivered: 2
- Classification: Rina



WORLDWIDE OPERATIONS & SUPPORT



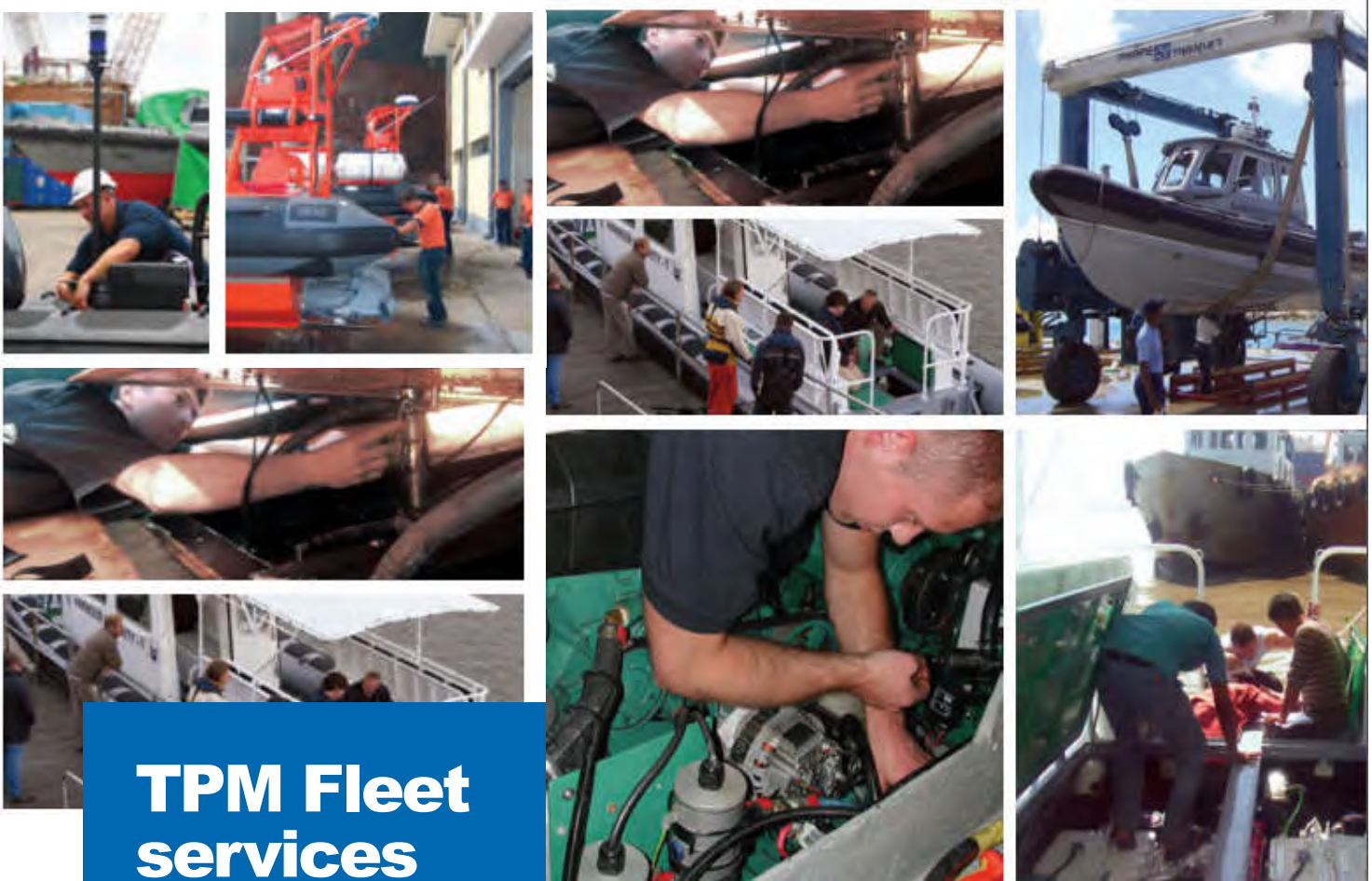
TP Marine is an international corporation with its headquarters in the Netherlands. Through a network of both wholly owned companies and strategic partnerships we offer a truly global sales and support service established in over 11 countries around the world.



“
With partners in over 11 countries around the world a truly global sales and support service







TPM Fleet services

//////

With focus on customer satisfaction TPM offers through life support packages and other after sales support options specifically tailored to suit the individual needs of our clients. Training is a natural part of our customer services and can provide users with training courses anywhere in the world. You will find TP Marine's after sales customer support outstanding. Our customised services will ensure that your investments are optimised throughout their life time.

- Technical Support
- Field Service Support
- Training
- Repair & Overhaul Services
- Periodic Maintenance
- Spare Parts Provisioning and Sales
- Configuration and Change Management
- Obsolescence Management
- Integrated logistic support
- Contract for availability

TP MARINE
GROUP