

Summary

**BESPOKE
LIVE**

Amber Noir Trio



Timeless jazz - from the classics to contemporary



Amber Noir Trio are a fabulous ensemble who deliver modern arrangements alongside the classics in a timeless jazz style!

This trio combine elegant female vocals with jazz guitar and double bass; expect to hear classic standards from across the decades like 'Autumn Leaves', 'Come Rain Or Come Shine', and 'Embraceable You'; alongside arrangements of hits by Britney, Billie Eilish or Amy Winehouse. They can also provide the sun-soaked vibes of 'Boy From Ipanema', 'Agua de Beber' and 'Mas Que Nada'.

Amber Noir Trio have the ability to transport you and your guests to another time and place; whether that be a gilded stage on Broadway or a smoky speakeasy of the prohibition era; and Elvira's theatrical vocal delivery makes for fantastic story-telling and playful interactions with the room.

This brilliant and versatile ensemble can deliver stunning performances either as the centre of proceedings or to provide ambience for a wide range of events and celebrations. As is the hallmark of Bespoke Live acts, bespoke pieces arranged for live performance can be explored.

<https://bespokelive.co.uk/strings-and-jazz>

Package Options

Party

Premium

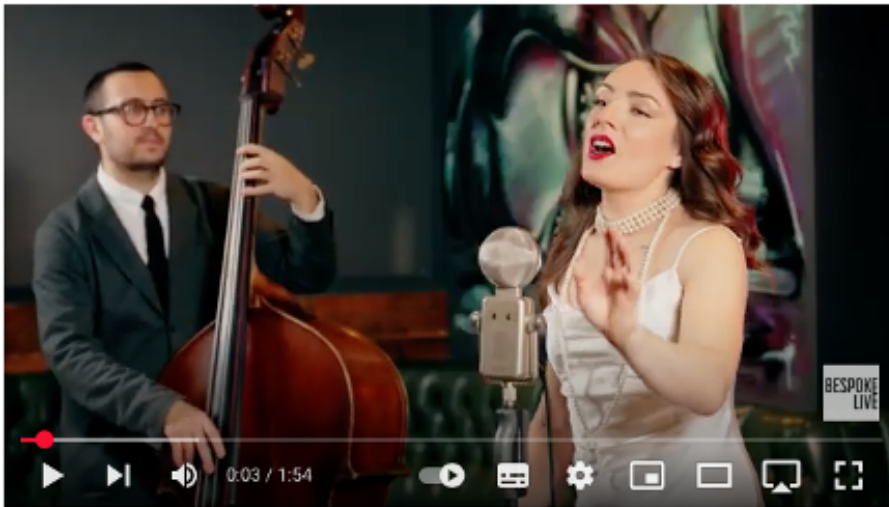
Reception package

Full evening party package

● ~2 hours

● ~3 hours

Showreel:



Showreel link:

<https://youtu.be/SvNmODA-WdE>

Sustainability

We believe in sustainable and ethical provision of live entertainment and we want to work with couples and clients who care about the planet. We are the only live music provider accredited with the Sustainable Wedding Alliance; for which we proudly hold membership. As standard we carbon-offset all travel on event dates and we also offer a range of innovative Sustainability packages, including tree-planting and re-wilding, linked to your booking.

Explore our sustainable entertainment packages at [Net Zero Live Music](#)

Enquiries

Name	Phone	Email
Al McHardy	+44 7950 253879	al@bespokelive.co.uk

BESPOKE
LIVE

