



BLOW OFF

INDUSTRIAL SPRAY NOZZLES
FLAT SPRAY - BROCHURE

FLAT SPRAY - BLOW OFF

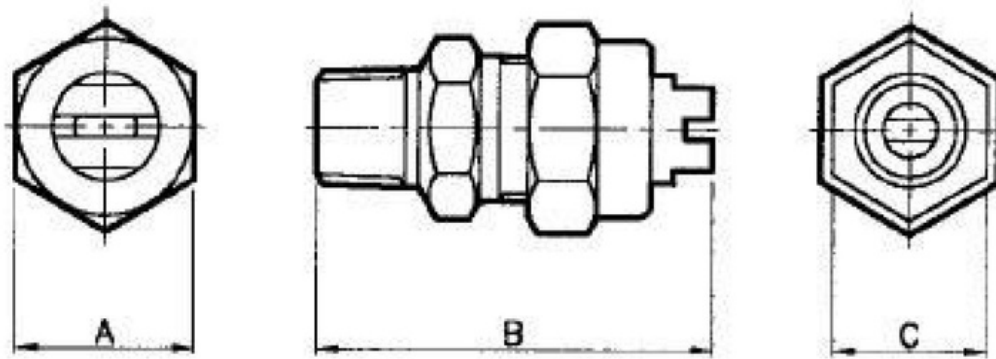
SPRAY CHARACTERISTICS

- Directs compressed air or steam in a wide, thin air sheet.
- Designed with a relatively large slotted orifice.

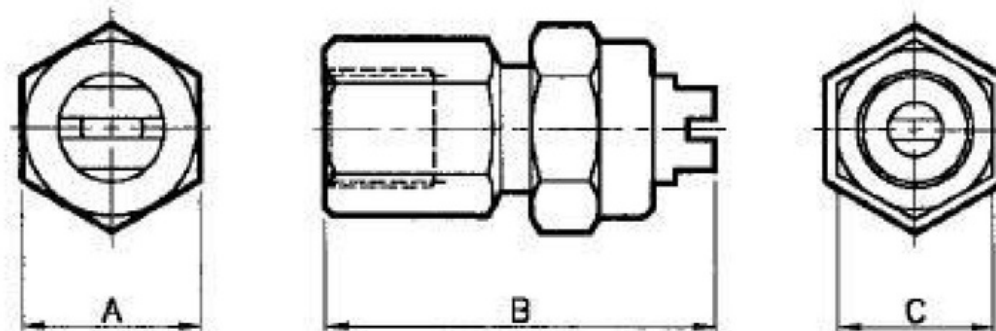
CONSTRUCTION AND MATERIALS

- Available in Brass and Stainless Steel (recommended for steam applications).
- 3 piece constructions, body, tip and cap.
- The tip has two flats to facilitate alignment.
- Optional body is available in a variety of threads.
- Thread sizes are Male BSPT and Female BSPP.

DIMENSIONS & DRAWINGS



BLOW-OFF (MALE) ASSEMBLY



BLOW-OFF (FEMALE) ASSEMBLY

DIMENSIONS AND WEIGHTS

Thread Type	Assembly Type	Dimensions (mm)			Weight (g)
		A Hex	B	C Hex	
1/8	Female	20,8	46,0	18,0	69
1/4	Male	20,8	46,0	18,0	61
1/4	Female	20,8	46,0	18,0	68
3/8	Male	20,8	46,0	18,0	63
3/8	Female	20,8	46,0	20,8	69