



LF

**INDUSTRIAL SPRAY NOZZLES
FLAT SPRAY - BROCHURE**

FLAT SPRAY - LF

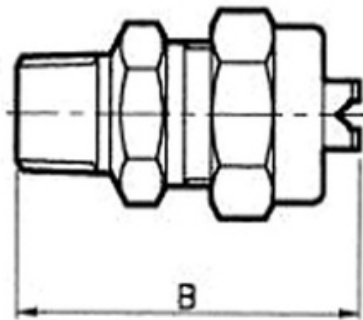
SPRAY CHARACTERISTICS

- Produces a uniform flat, fan shaped pattern with tapering edges.
- Requires overlapping for even distribution.

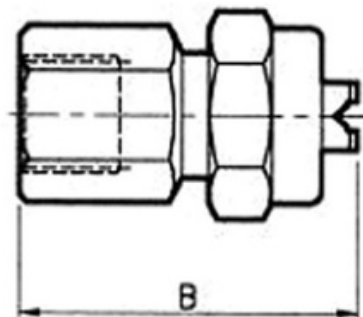
CONSTRUCTION AND MATERIALS

- NOTE Stainless Steel only available from LF 2 and above.
- NOTE Brass not available in 1.0 or below.
- Nozzle cap - Brass and Stainless Steel.
- Nozzle strainers - Brass and Stainless Steel.
- Nozzle body - Brass and Stainless Steel.
- Nozzle tip - Brass and Stainless.

DIMENSIONS & DRAWINGS



LFM (MALE) ASSEMBLY



LFF (FEMALE) ASSEMBLY

DIMENSIONS AND WEIGHTS

Thread Size	Assembly Type	Dimensions (mm)			Weight (g)
		A Hex	B	C Hex	
1/8	LFF	20,8	43,0	18	65
1/8	LFM	20,8	41,3	18	55
1/4	LFF	20,8	43,0	18	64
1/4	LFM	20,8	43,0	18	57
3/8	LFF	20,8	43,0	20,8	65
3/8	LFM	20,8	43,0	18	59