

welcome



VIEWS & VINES
LODGE

meet your home

Welcome to the View & Vines Lodge!
We are so glad you decided to stay, and hope that you have a great time at our Leavenworth getaway. We are happy to be able to share this special place with you and truly hope you get to enjoy it as much as we do. The views of the mountains in the morning are spectacular, and there are some fantastic restaurants and breweries in the neighborhood. Keep reading for advice on local restaurants, activities, and more.

This book contains information about the house to help you enjoy your stay. You should find everything you need, but if you have a question that isn't covered here, please get in touch and let us know how we can help.

We hope you fully relax, celebrate, enjoy and connect. Most of all we hope you make memories!

Please sign the guest book and leave a review online to let us know how your stay was!



[LINK TO OUR RENTAL PAGE](#)

Enjoy!
Kelly & Lew

if you need to get in touch with us



Contact Kelly or Lew Wagman
Kelly- (425)503-6560 Lew- (425) 698-7493
Kelly@tailspinners.com Lew_Wagman@Hotmail.com

but first, WIFI



network:

Fiber Cabin

password:

thecabin

12685 Maple St. Leavenworth 98826

Owners: Lew & Kelly Wagman

Qualified person: Above

Contact: 425-503-6560/425-698-7493

E-mail: kelly@tailspinners.com

Address: 9076 Icicle Road, Leavenworth

Emergency Notification method: Owners will
Text/Call/e-Mail addresses on file

Number of Bedrooms: 4

Max Occupancy: 8 guests

Max Vehicles: 5

Your landline: 425-307-1717

Consumer safety:

- See next page for emergency contacts
- Smoke/Carbon Monoxide Detectors:
 - Located on each floor
 - Located outside of each sleeping area

emergency info



LOCATION

12685 Maple Street
Leavenworth, WA 98826
425-307-1717



9-1-1

CALL 9-1-1- in case of EMERGENCY
Non-Emergency- 506-667-6851
(Chelan County Sheriff)



HOSPITAL

Cascade Medical (Open 24 hours)
817 Commercial Street
Leavenworth, WA.
509-548-5815



PHARMACY

Safeway Pharmacy
116 River Bend Dr
Leavenworth, WA 98826
(509) 548-5811



FIRE DEPARTMENT

Leavenworth Fire Dept.
509-548-7711
1.1 miles away on Chumstick Hwy

check-in



CHECK-IN 4:00PM

- Please do a quick walk around and let us know if there is anything you have questions about or that do not meet your satisfaction.
- The thermostat can be found next to the master bedroom door--just off the living room.
- All heating, water heat, appliances, etc are electric. Only the fireplace is run on propane.
- Misc items like batteries can be found in the kitchen desk.

FIREPLACE

- Use the lower switch to the left to turn on the fireplace.
- The upper switch turns on the fireplace blower.

Please do not use to adjust for heat.
Use the thermostat.

Please turn it off when not in use and
at all times when leaving the
premises.



check-out



CHECK-OUT 11:00 AM

- Please lock the door behind you and load & run the dishwasher upon your check-out.
- Turn off all lights, TV's, appliances, fireplace, grill, fire-pit, and patio heaters.
- Shut the windows & pull down the shades in the dining and living rooms.

Lite Pick-Up

- Take the trash and recycling out to the respective bins.
- Put away dishes and kitchen appliances.
- Check to make sure the toilets are not running (see septic)
- Bring the towels up to the laundry room & if you are feeling kind, start a load. It makes our cleaner's day!
- Double-check that you did not leave any items behind.



Have a safe trip home and come back to see us again soon!

house rules

GENERAL

- No smoking allowed.
- Please be respectful of the home and our neighbors.
- The maximum number of guests at any time is 8. This is a county regulation and violation may lead to guest fines as well as the loss of our license.

NO PARTIES OR EVENTS

- Only registered number of people on the property & never more than 8.
- No more than 5 cars allowed. All cars must be parked off street and may not block easements.
- Your neighbors are full-time residents. They are not on vacation and may be your guide, nurse, server or driver the next day. Please be considerate.

NOISE

QUIET HOURS are between 10 p.m. & 7:30 a.m.

- Noise Aware is installed in the home and outdoors.
- We/It does not listen or record any conversation; it measures just the decibel level.
- When it gets too loud, we are alerted and will call, text, or come visit.
- We're nice, but we'd rather meet you under better conditions.



trash & recycling

TRASH & RECYCLING CANS ARE IN THE GARAGE

WHAT TO DO

- Please separate trash and recycling.
- Trash is picked up at the end of stay by a local provider. If you are staying longer than five days, you should expect the trash to be picked up from the garage. Text if you need additional service
- Close the garbage cans and close the garage door. You do not want a bear in the garage!
- Be aware that dumping excess trash in any residential or commercial property other than designated could result in a fine from the county.

RECYCLING

Leavenworth does NOT recycle glass



miscellaneous house info



WINTER WARM

- You will find gloves, coats, snow pants, and other misc. items. If you or your crew need another layer – feel free to hit the closet. The housekeepers do not monitor/clean this clothing:
- Use the boot dryers! We love that you can close the doors!
- Put your wet gloves or socks on the grate so that air can flow and make sure they dry for next day fun. .

FRUIT TREES

- The property is covered in fruit trees and shrubs. Please enjoy, but don't pick to harvest. The fruit won't make it back home, but we do glean for people in need.

GAMES

- BOCCE & CROQUETTE
 - Mallets and balls are in the bin downstairs on the patio.
- HORSE SHOES
 - At the bottom of the left-hand side of the property.
- FOOSBALL & GAMES: Downstairs & in the top drawer in the kitchen desk. Extra pieces there too!

EXERCISE

- ELLIPTICAL MACHINE: See contract
 - If the beautiful trails on Ski Hill aren't enough, enjoy a movie and workout on our elliptical.
- SNOW SHOES
 - They are seasonally located downstairs by the patio door.

Enjoy your stay!

kitchen



PANTRY

- You are welcome to use anything in the spice cabinet or pantry.
- Feel free to replace anything that you run out of and leave anything you wish, (for things that will not go spoil).
- Please empty the refrigerator of anything that will spoil at the end of your stay.
- There is a large cutting board above the refrigerator that is useful for the BBQ.

WATER

- We are on well water.
- The water has some iron in it – all good. Occasionally, if a specific tap has not been run for a while, the water will look rusty, but it healthy and normal minerals. Let it run for a minute and it will clear. This is also the cause of the discoloration in the toilets. The tap water tastes great!
- Filtered water is available for drinking on the inside of the left-hand refrigerator door.

BONUS APPLIANCES

Please clean and return them to their original location. The housecleaners do not service these – so the next guests appreciate your effort!

- Waffle maker: In the summer, throw on some fresh berries from the yard. There is a can of olive oil spray to use before every batch. It gets sticky.
- Panini maker: Great for a hot grilled cheese after playing in the snow.
- Crockpot: With several recipe books in the cupboard next to the stove.
- Sous Vide: Put in your favorite meat and set the right temp. Enjoy it perfectly cooked when you return. Directions and recipes at anovaculinary.com
- Egg Sandwich Maker: Best skier breakfast ever– hot, car-friendly meal in 4 minutes. Any meat, any cheese, any condiment, any veggie. Directions & recipes @hamiltonbeach.com.

Enjoy your stay!

technology



TV

- TV in all rooms have basic cable with most channels on 3.1 to 13.1
- THEATER ROOM:
 - Remote control for the TV is the Vizio
 - If you want to run the surround sound, you can use the receiver remote control
 - Extra batteries are in the drawers in the kitchen (right below this book!)

ALEXA

TO PLAY MUSIC:

- Say "Alexa, Open Kissing 977" for local country music
- Say "Alexa, Open the Quake" for local rock
- Say "Alexa, play holiday music" for iHeart radio

WEATHER:

- Say "Alexa, Open Stevens Pass" for the ski report
- Say "Alexa, Open Big Sky" for local weather

FOR FUN:

- Say "Alexa, tell me a joke"
- Say, "Open, Question of the Day" for trivia
- Say, "Open the tonight show" for Jimmy Fallon's opening

Alexa is locked to this location and will not work elsewhere.

XBOX

- Feel free to enjoy the games located in the cabinet. Please replace them with the correct holders and put them away.
- If you want to enjoy Xbox live, feel free to use your own ID but make sure to remove it when checking out.

Enjoy your stay!

outdoors



GRILL

- To use the grill, turn on the propane at the propane manifold (where the gas line connects to the main propane valve)
- Grilling equipment can be found hanging from the pot rack
- Please brush down the grills & if wipe spills from the surfaces when done

PATIO HEATERS

- Lighting directions are located on the heater. Turn-on, push the igniter button.
- When done using, turn the propane off where the heater connects to the propane manifold to prevent leaks.

HOT TUB

- The hot tub will be prepared prior to your arrival.. The hot tub will be maintained mid-week, during any stay exceeding five days by Buddha's pool and spa (206) 683-7627. If you desire additional service please contact us asap.
- This is covered in the house rules, but worth saying again, do not take glass to the hot tub. Use the acrylic | plastic glasses for all outdoor use.
- Safe temperatures for hot tub use are under 102 F for adults and under 99 F for kids. It is not recommended if you are pregnant.

Enjoy your stay!



SNOW INFO



ROAD CONDITIONS

Hwy 2, Blewett Pass, and I-90 are generally well-attended roads, however, it is a good idea to check road conditions when preparing to travel.

- Forecast: using noaa.gov and entering the location does not always work for pass information – but typing noaa Stevens Pass or noaaSnoqualmie into your search engine will give you accurate results. NOAA seems to yield the best local information.
- Check mountain passes on wsdot.wa.gov or download the application. Look at the webcams to see the current road conditions.
- Say “Alexa, Open Big Sky” for local weather.
- Plan for weather. In the winter months you will need AWD or chains. for passes and local roads.

PARKING

A map of the property is provided. Please review and stay within our property boundaries. Feel free to say “Hi” to your neighbors from our side of the “fence”!

- You may only park in designated parking spots. You can find these on the property boundary map.
- Parking beyond our boundaries as marked in red may lead to ticketing or your vehicle may be towed.
- **MAXIMUM LIMIT OF 5 CARS.** It is a county limit, and we may not exceed it. Additional cars must be parked elsewhere. Contact us for suggestions.

DRIVING

Ski Hill and Maple Street are plowed by the city and county (on their schedule). The driveway is plowed by a private service after a storm with 3-6” of snow.

- There is a bucket of sand at the end of the walkway. Please feel free to use this to add traction to the path between the car and the walkway.
- There is an irrigation ditch on the righthand side of the driveway as you head toward the house. It is marked with snow poles.

Enjoy the snow!

Firepit INFO



FIRE & FIRE PIT

By county ordinance, the fire-pit will be restricted when the fire danger is listed as high or above.

- The portable fire-pit is powered by a portable propane tank. Lighting directions can be found near the control panel.
- No other fires allowed. No smoking. No fireworks. No wish lanterns, etc... It's a fire-prone, high fire danger area.
- If a propane tank is low; swap or fill it as needed (Safeway, KOA, 76 station), photo receipt & we will Venmo your party/refund via VRBO.
- These rules are county regulations ~ no exceptions.
- Violations will result in immediate removal. We take fire seriously.

STORES NEARBY

Check the WILLKOMMEN BOOK for all of our local suggestions

GROCERY

- Dan's Market: The selection is good, prices are reasonable, fresh selection is good quality and you can get in and out fast. 1329 US-2 Leavenworth ~ 1.2 miles. We typically shop here.
- Safeway: Open 24 hours, but can be busy on weekends (especially holiday!) ~ 1.4 miles

GAS STATION

- Towards Seattle, 76 Station: 585 US-2 ~ 1.4 miles
- Towards Wenatchee, Safeway: 116 River Bend Drive ~ 1.4 miles

TRANSPORTATION

Leavenworth Taxi: On-call (509) 548-7433

Uber: Uber services the Leavenworth area.

Amtrak: The Empire Builder stops @ Icicle Station in Leavenworth, WA. 1.2 miles

- Departs Seattle King Station @ 4:40 p.m. and arrives ~ 8:00 p.m.
- Departs Leavenworth @ 6:08 a.m and arrives King Station @ typically arrives ~ 9 a.m.

Bus:

- Greyhound
- Amtrak Thruway
- Trailways

Link: Regional bus services

CHRISTMAS TREE LIGHTING ADVICE



The festival is an experience to remember, but even with the changes, we anticipate a crowd. Here are some suggestions to make it a great time for your family.



GETTING THERE

The house is ~ 1.1 miles from the Christmas lighting festivities. If the weather is accommodating, the best option is to walk. It will be dark upon return so flashlights can be useful.

If walking isn't feasible, you can get closer, but parking is a challenge. There is a map in the pocket with some highlighted areas to try. There is a path into town from Whitman. We usually try Orchard or Central. If you have young children, pulling a sled is much more effective than a stroller.



DRESS IN LAYERS

If you head down early in the afternoon, it may still be sunny, and you may get warm walking. The temperature drops rapidly when the sun goes over the hill. It will not be warm during the festival. Ask Alexa what the temperature will be and dress bring layers for later – you don't want to get there, find the perfect parking spot and need to come back for a layer!

There are toasty firepits to enjoy in town.



BE EARLY, LEAVE EARLY

The festival begins at 4:30, and they are fairly prompt – arriving in town early, will give you a better parking spot, a better viewing spot, and time to enjoy the festivities. We usually aim for about 3:30. If we have snow (fingers crossed!), and you have young children, pass the time by sledding near the gazebo.

If you want to enjoy Leavenworth shopping, we suggest going down early in the day ~ 10 a.m., shop and return. Immediately before and for a long time afterwards, the popular shops will have lines. We never plan on dinner in town after the festival – even with reservations.



SEPTIC SYSTEM

SEPTIC SYSTEMS



ONLY TOILET PAPER

Do not flush anything beside human waste and toilet paper. I'm sorry. It's a gross topic. Many people don't know the details of a septic system – and you shouldn't have to – except to know that you cannot flush anything else. Examples of what you cannot flush:

- Feminine hygiene products
- Baby wipes, **even the flushable kind**
- Food
- Chemicals
- Kids toys
- Or anything else

The system is also designed for no more than the number of guests than we've advertised for the home. This is one of the reasons that we do not host events or allow parties.



WHAT HAPPENS IF

Flushing non-intended materials can back-up the septic system, and when it does, it backs up through the shower drains and toilets. This is not a pleasant experience and service isn't available 24 x 7 (or immediately).

For your enjoyment, please make sure everyone is aware. Allowing the water to run for long periods of time can also back-up the system. Usually, this is a misaligned toilet that continues to run and can be fixed with an easy adjustment .

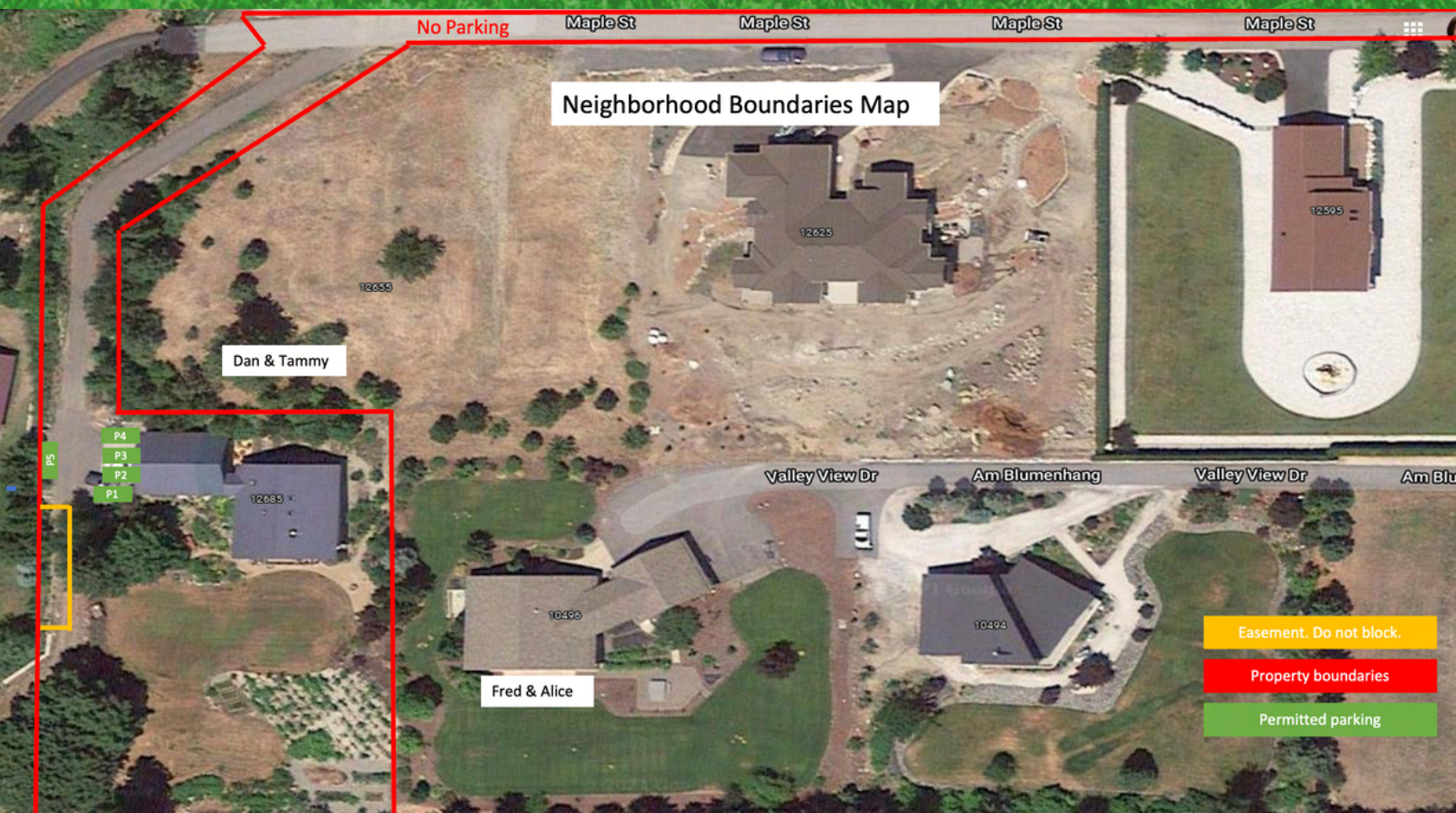


WHAT TO DO

Approximately 1/5th of US homes depend on septic systems including all in the area that are outside of the City of Leavenworth – so these systems aren't difficult. You will know there is an issue if you hear the alarm or a back-up begins. Here's what to do if you have an issue.

- Turn off the septic alarm: open the panel which is located outside on the left side of the house (by the king bedroom), push the reset button
- Turn off all water use (shower, dishwasher, washing machine). Use water again after one hour but minimize water use (spread out showers, run the dishwasher and washing machine separately).
- Do a quick run through of the bathrooms to see if any toilets are continuously running.
- Call us if the above doesn't solve the problem.

BOUNDARY MAP



CHELAN COUNTY

Chelan County Regulations September 2021

- No more than 8 people (of any age) on the property at any time.
- No more than 5 cars all parked off street and not blocking easements.



Hey, Neighbor! Welcome to Chelan County

Hello, new neighbor! While you are here, you are part of our community. The Good Neighbor Guidelines was created to help educate short-term rental owners, tenants and visitors about the importance of not only being a good guest but also the role we all play in keeping Chelan County an amazing place to live, work and play.

As a good neighbor, please consider:

24-Hour Contact Information: If you have concerns in regards to the unit's safety or overall cleanliness, or if you have concerns about or from your neighbors, call the 24-hour contact number listed in your rental agreement. The contact information is posted in a prominent location within the property.

General Respect for Neighbors: Be friendly, courteous and treat your neighbors how you want to be treated. Respect your neighbors, their privacy and their property.

Noise: Be considerate of the neighborhood and your neighbors' right to the quiet enjoyment of their home and property, especially after 10 p.m. Public disturbance noises include the creation of loud, frequent, repetitive or continuous sounds that exceed a reasonable standard, disturbing the peace and comfort of another. Noise complaints generated from your party may even result in a civil penalty and/or the owner's rental license revocation.

Parking and Traffic Safety: A copy of the county-approved parking plan must be provided to all renters in the rental agreement and posted in a prominent location within the property. Do not park on lawns or in a manner that blocks driveways, sidewalks, alleys or mailboxes. There should be 1 parking space per bedroom, as well as 1 space for the owner/manager. Observe posted speed limits and watch for children and pedestrians.

Trash and Recycling: Place trash and recycling in appropriate containers at the designated place and time for pick up. Return trash and recycling containers to the designated location within 12 hours after pick up. Cigarette butts should be properly extinguished and disposed of in the garbage.

Fire Safety and Prevention. Wildfires are a serious risk here, and fire restrictions may be in place, depending on current conditions and the time of year. Abide by all seasonal and emergency bans. Even if fire restrictions are not in place, be vigilant. Only use approved outdoor devices, and ensure a responsible adult is always present until a fire is completely out.

Pets: If pets are allowed at this short-term rental, clean up after them promptly. Prevent excessive and/or prolonged barking. Keep pets in designated areas and obey local leash laws to avoid roaming. Control aggressive pets. Store pet food in secure

containers and indoors if possible to avoid pest problems.

Respect for Wildlife: Chelan County is blessed with diverse wildlife. While it can be exciting to see wildlife, it is best to do so at a safe distance. Most dangerous and potentially harmful encounters with wildlife happen because people fail to leave wildlife alone, allow pets to disturb wildlife or leave out food or scraps.

Property Maintenance: Be sure to pick up after yourself and keep the property clean, presentable and free of trash.

Tenant/Guest Responsibility: Approved guests are expected to keep the number of day-use and overnight visitors within the permitted maximum and follow the Good Neighbor Guidelines. Be sure to read your rental agreement for additional terms and restrictions.

Chelan County has received national attention for being a great place to live and visit. We encourage everyone to be a good neighbor, helping to keep our home clean, safe and vibrant for everyone who lives, vacations and works here.

We hope your stay in Chelan County creates many lasting memories.



FIRE SAFETY

CHELAN COUNTY EVACUATION LEVELS

LEVEL 1

BE ALERT. Be alert and stay aware of the danger that exists in your area; evacuations are voluntary.

LEVEL 2

BE READY. Significant danger to your area; leave voluntarily or be ready at a moment's notice.

LEVEL 3

LEAVE IMMEDIATELY. Danger to your area is current or imminent; leave immediately.

THE SIX P's

REMEMBER THE SIX "P'S"

KEEP THESE SIX "P'S" READY IN CASE IMMEDIATE EVACUATION IS REQUIRED:

- People and Pets
- Papers, phone numbers, & important documents
- Prescriptions, vitamins, and eyeglasses
- Pictures and irreplaceable memorabilia
- Personal computers, drives/disks, and chargers
- "Plastic" (credit cards, ATM cards) and cash

INFORMATION SOURCES

Sign up for Chelan County Emergency Alert System <https://public.alertsense.com/SignUp/?regionid=1184>

Chelan County Emergency Management



www.Facebook.com/CCSOEM



Twitter

U.S. Forest Service

<https://inciweb.nwcg.gov>

Northwest Interagency Coordination
Center Fire Information

<https://gacc.nifc.gov/nwcc>

Radio

KOHO 101.1 FM | KPQ 560AM | The Quake 102.1 FM

Lake Wenatchee Fire & Rescue



www.Facebook.com/lakewenatcheefirerescue
www.lwfr.org

Ready, Set, Go! Wildland Fire
Preparedness

www.wildlandfirersg.org

Ready, Set, Go! for pets

www.wenatcheehumane.org/wildfire-disaster-planning

Lake Wenatchee Fire Adapted
Communities

email: lwfac@lwfr.org

Air Quality Information

<https://fortress.wa.gov/ecy/enviwa>

FOLLOW US ON FACEBOOK



[@Viewsandvines](https://www.facebook.com/Viewsandvines)

FEEDBACK IS IMPORTANT TO US !

ONLINE: Leave a review to let us know how your stay was. Our cleaning team gets a bonus when they make it a 5-star experience for our guests

GUEST BOOK: Leave a note for future travelers

EMAIL or CALL: If you have any suggestions or input please let us know.