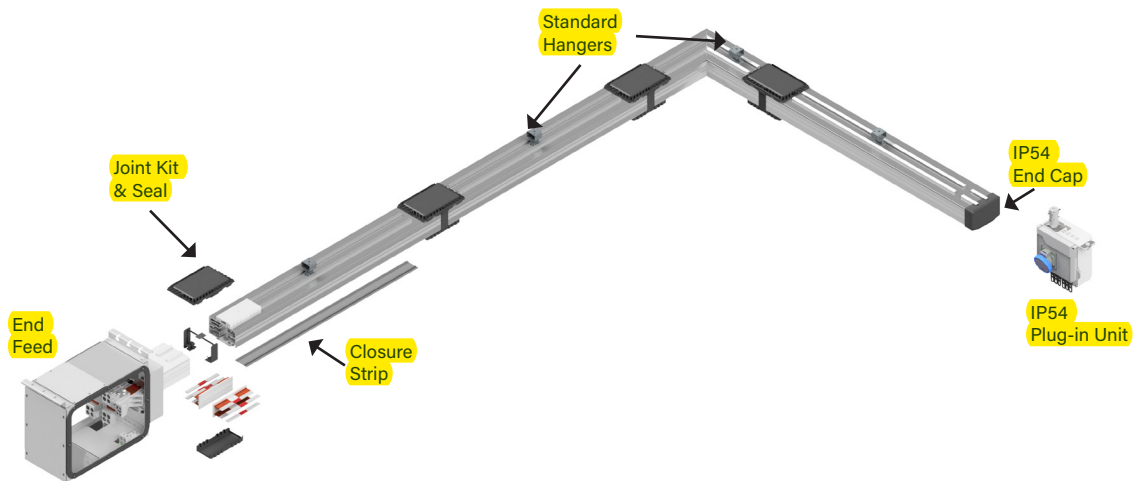


1200 AMP SYSTEMS

S5 SYSTEM LAYOUT DRAWING



PLUG-IN UNITS

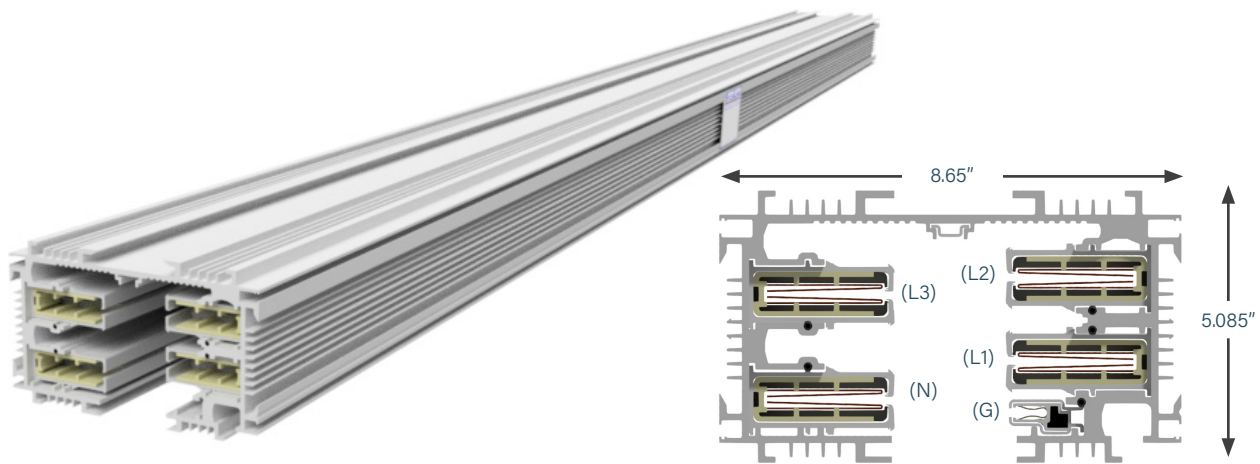
For further information on applicable T5 plug-in unit options, please visit the **Plug-In Units** section.

1200 AMP SYSTEMS

STRAIGHT SECTIONS

PRODUCT DESCRIPTION

Track Busway straight section consists of an extruded aluminum shell with copper-aluminum channel busbars contained in a full length insulator mounted on the interior walls. The aluminum extrusion acts as a 100% ground path. Each housing has a continuous access slot over its entire length for the insertion of plug-in units. Housing configurations include 4-pole varieties, with optional isolated ground. The housing sections join together using Bus Connectors which fit into the channels of the adjoining section. An Installation Tool is used to force the blades into the busbar channels for a solid "spring-pressure" electrical connection.



MATERIAL

Powder Coated Extruded Aluminum

Note: S5 housing includes corrosion resistant base coating

RATINGS

100% Ground Path

1200 Amps

600 Volt

LENGTH

T5: 5 ft, 10 ft max. Custom lengths between 2 - 10 ft

S5: 5 ft, 10 ft max. Consult factory for additional lengths

VOLTAGE DROP

Distributed load

Single Phase 1V per 15ft (.8PF)






Three Phase 1V per 25ft (.8PF)

WEIGHT

10 ft 4 pole w/ standard ground: 195.5 lbs - Hybrid

10 ft 4 pole w/ copper ground: 210 lbs - Hybrid

US

L1 or Phase A		Black
L2 or Phase B		Red
L3 or Phase C		Blue
Neutral		White
Ground		Green/Black

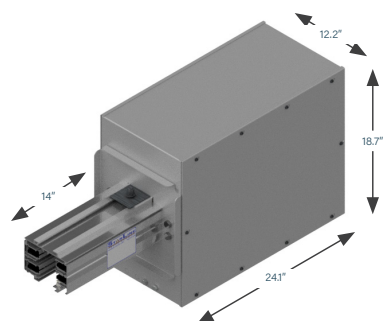
1200 AMP SYSTEMS

END FEED UNITS

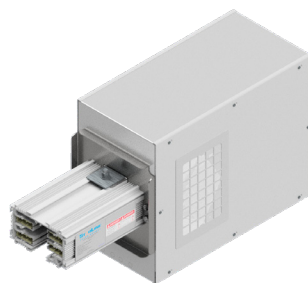
PRODUCT DESCRIPTION

Standard end power feed units connect to the end of the busway. Factory assembled unit consists of a 18.7 x 24.125 x 12.15 inch steel junction box that is removable for easier installation, also with removable side, connected to an 14 inch section of busway. Certain assemblies include ground lugs for wires up to 350MCM and mechanical lugs that can accommodate up to (4) 600MCM cables per phase. Compression lug capable feeds are available upon request. Reverse end feed units are for connection to the opposite end of the busway section (polarizing strip faces to right as viewed from end of unit). Junction box is sized such that three 4 inch conduits can be installed in the end of the box. End power feed units are connected to adjacent busway sections using a housing coupler and bus connector (ordered separately). Special need power feed units for confined spaces, as found in mission critical data centers, can also be designed and fabricated but may require minimum quantities.

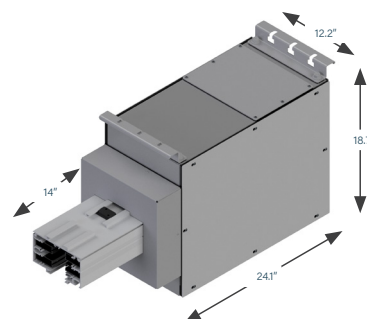
Weight 100.5 lbs (76 lbs without busway stub)



STANDARD BOX



STANDARD BOX
(with Rectangular IR Window)



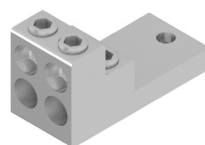
1200S5 END FEED

	BOXES		
LUGS	Standard	Large	Fused
Standard	S		
Double			
Bolt	B		

Box size and Lug options: Refer to option 8. Lug/Box Options on **page 4.101**
End Feed Units: Product Numbers

*Bolt options include bolt, washer, nut. Lug not included.

*Isolated or dedicated ground is determined at the feed during installation. For further details about Dedicated Ground vs. Isolated Ground, please reference our tech brief on downloads.starlinepower.com/starline/busway



STANDARD "S"



STANDARD "B"

T5 AND S5 SERIES BUSWAY

ACCESSORIES: SUPPORT HARDWARE

■ **THREADED ROD**

For mounting to 1/2 - 13 UNC threaded rod (UBRHT5-1) or to 3/8 - 16 UNC (UBRHT5-2). Twist-in design. Can be inserted anywhere along the top full-access slot of busway. Maximum hanger support spacing is every 10 feet.

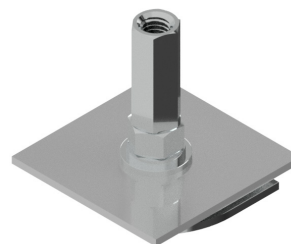
Part Number (250, 400, 600,
& 800 amp systems only):

UBRHT5-1

UBRHT5-2

Available in plain zinc
or black (-BLK)

Weight
.3 lb



■ **SEISMIC THREADED ROD**

For mounting to 1/2 - 13 UNC threaded rod. Can be inserted anywhere along the top full-access slot of busway. Hangers are required every 10 feet maximum for seismic support.

Part Number (250, 400 & 600
amp systems only):

US: UBRHT5-3

Available in plain zinc
or black (-BLK)

Weight
.3 lb



■ **STANDARD**

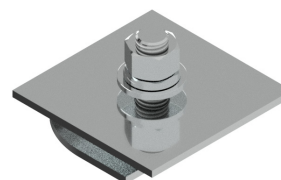
For mounting to strut or other flat surfaces. Twist-in design allows inserting anywhere along the top fullaccess slot on the busway. Hanger support is required every 10 feet maximum.

Part Number (250, 400, 600 &
800 amp systems only):

UBHT5-1

Available in plain zinc
or black (-BLK)

Weight
.2 lb



■ **STANDARD ONE-PIECE, SLOTTED**

For mounting to 1/2 - 13 UNC threaded rod. Can be inserted anywhere along the top full-access slot of busway. Hangers are required every 10 feet maximum.

Part Number (Required for
1000 and 1200A, available for
all T5 systems.)

UBSHT5-4

Available in plain zinc
or black (-BLK)

Weight
.09 kg



■ **WALL MOUNT BRACKET**

For mounting to walls, using standard hangers. Hanger support is required everything 3 meters maximum.

Part Number
WMBT5-9



Note: All S3 Systems must be mounted
in the standard vertical orientation

T5 AND S5 SERIES BUSWAY

ACCESSORIES: CONNECTION HARDWARE

T5 & S5 JOINT KITS

SYSTEM AMPERAGE	NEUTRAL/GROUNDBAR OPTION	T5 SERIES CATALOG #	S5 SERIES CATALOG #
250	3 Phase plus Neutral	SJK250T5-1	SJK250S5-1
	3 Phase plus Neutral plus Internal Ground Conductor	SJK250T5G-1	SJK250S5G-1
	3 Phase plus 200% Neutral	SJK250T5N-1	SJK250S5N-1
	3 Phase plus 200% Neutral plus Internal Ground Conductor	SJK250T5F-1	SJK250S5F-1
400	3 Phase plus Neutral	SJK400S5-1	SJK400S5-1
	3 Phase plus Neutral plus Internal Ground Conductor	SJK400S5G-1	SJK400S5G-1
	3 Phase plus 200% Neutral	SJK400S5N-1	SJK400S5N-1
	3 Phase plus 200% Neutral plus Internal Ground Conductor	SJK400S5F-1	SJK400S5F-1
C400	3 Phase plus Neutral	CJK400T5-1	CJK400S5-1
	3 Phase plus Neutral plus Internal Ground Conductor	CJK400T5G-1	CJK400S5G-1
	3 Phase plus 200% Neutral	CJK400T5N-1	CJK400S5N-1
	3 Phase plus 200% Neutral plus Internal Ground Conductor	CJK400T5F-1	CJK400S5F-1
500	3 Phase plus Neutral	SJK500T5-2	SJK500S5-2
	3 Phase plus Neutral plus Internal Ground Conductor	SJK500T5G-2	SJK500S5G-2
600	3 Phase plus Neutral	SJK600T5-2	SJK600S5-2
	3 Phase plus Neutral plus Internal Ground Conductor	SJK600T5G-2	SJK600S5G-2
800	3 Phase plus Neutral	SJK800T5-2	SJK800S5-2
	3 Phase plus Neutral plus Internal Ground Conductor	SJK800T5G-2	SJK800S5G-2
1000	3 Phase plus Neutral	SJK1K0T5-2	SJK1K0S5-2
	3 Phase plus Neutral plus Internal Ground Conductor	SJK1K0T5G-2	SJK1K0S5G-2
1200	3 Phase plus Neutral	SJK1K2T5-2	SJK1K2S5-2
	3 Phase plus Neutral plus Internal Ground Conductor	SJK1K2T5G-2	SJK1K2S5G-2

T5 AND S5 SERIES BUSWAY

ACCESSORIES: CONNECTION HARDWARE

T5 JOINT KIT

For the connection of adjacent busway sections. One kit is required at each joint. Each kit is comprised of a housing coupler pair and bus connector set.

Bus Connector: copper blades secured to an insulating mounting plate. This makes the electrical connection between sections.

Housing Couplers: consists of two 12-screw couplers-one for the top and one for the bottom. These make the mechanical connection between busway sections.

**Installation tool is required (see below)*

***Available in all standard and RAL colors*

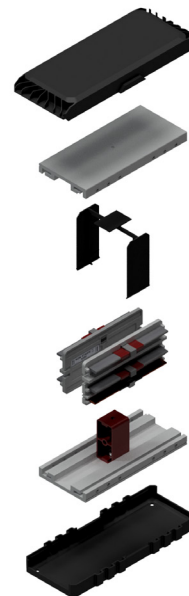
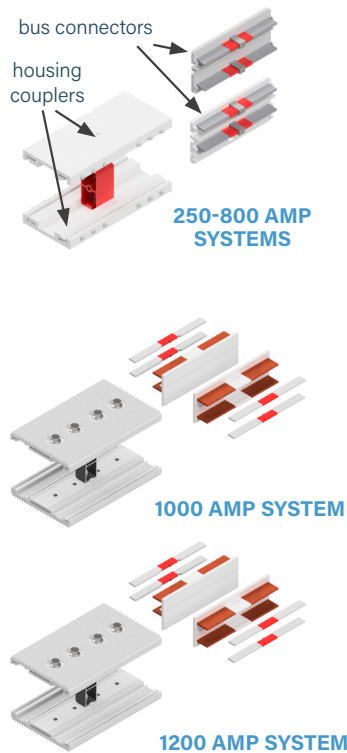
S5 JOINT KIT

Bus Connector: copper blades secured to an insulating mounting plate. This makes the electrical connection between sections.

Housing Couplers: consists of two 12-screw couplers-one for the top and one for the bottom. These make the mechanical connection between busway sections.

Joint Seal: Plastic sealing component installed between two housings at joint prior to bus connector and coupler installation

Joint Cover: Plastic sealing cover snapped over top of housing coupler after coupler installation.



Includes: Couple Covers, Top and Bottom Housing Couplers, Joint Seal and Bus Connectors

T5 AND S5 SERIES BUSWAY

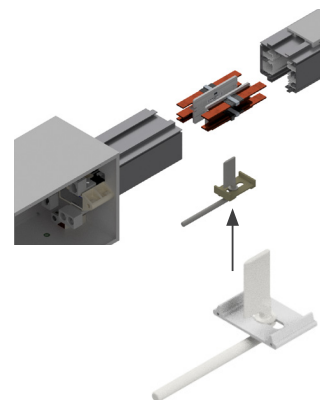
ACCESSORIES: CONNECTION HARDWARE

■ INSTALLATION TOOL

An installation tool is used to install the bus connector between two adjacent sections of busway. A joint kit, which is comprised of two housing couplers and a bus connector set, is required at every joint.

Busway sections are butted together and the top housing coupler is installed. The bus connector is inserted, centered and seated in the slot of the busway. The installation tool is inserted into the jointed intersection and rotated 90 degrees to form a secure electrical connection. The housing coupler is then positioned over the bottom joint and tightened.

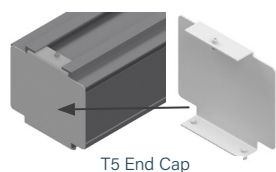
Part Number
ST5/IT
No available colors
Weight
3.1 lb



■ END CAP

For covering the end of T5 busway systems.

SYSTEM	DESCRIPTION	T5 SERIES CATALOG #	S5 SERIES CATALOG #
250	250 Amp End Cap	SEC250T5	SEC250S5
250	250 Amp End Cap, 200% N	SEC250T5-2N	SEC250S5-2N
C400	Compact 400 Amp End Cap	CEC400T5	CEC400S5
C400	Compact 400 Amp End Cap, 200% N	CEC400T5-2N	CEC400S5-2N
400	400 Amp End Cap	SEC400T5	SEC400S5
400	400 Amp End Cap, 200% N	SEC400T5-2N	SEC400S5-2N
500	500 Amp End Cap	SEC500T5	SEC500S5
600	600 Amp End Cap	SEC600T5	SEC600S5
800	800 Amp End Cap	SEC800T5	SEC800S5
1000	1000 Amp End Cap	SEC1K0T5	SEC1K0S5
1200	1200 Amp End Cap	SEC1K2T5	SEC1K2S5



T5 AND S5 SERIES BUSWAY

ACCESSORIES: CONNECTION HARDWARE

CLOSURE STRIP

Snaps into bottom access slot of busway housing. The optional closure strip is normally shipped in 10 feet lengths and can be field cut to fit exact desired length.

Closure Strip is offered in both non-conductive plastic material and aluminum.

Important note: Closure strip is optional for T5 systems, but is required for S5 systems in order to ensure the system meets IP54 ingress protection requirements. Closure strip must be ordered separately.

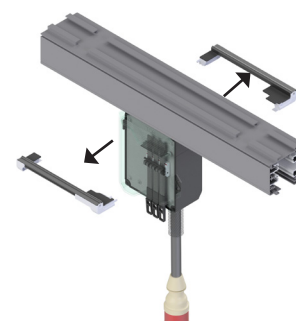


SYSTEM	AMPERAGE	PART NUMBER	MATERIAL TYPE	REQUIRED
T5	250-800A	SCST5-1	Plastic	Optional
T5	250-800A	SCST5-1-AL	Aluminum	Optional
T5	1000-1200	SCST5-2	Plastic	Optional
S5	250-800A	SCSS5-1-AL	Aluminum	Yes
S5	1000-1200	SCST5-2	Plastic	Yes

TAP-OFF SEAL ASSEMBLY

For use with Series-S Busway only. The seal assembly (2 pieces) wraps around the enclosure, protecting it and the busway from dust and liquid ingress.

Note: Tap-off Seal Assemblies are already included with each Series-S Plug-in unit, but may be ordered separately.



PLUG-IN (TAP-OFF) ENCLOSURE	SEAL ASSEMBLY CATALOG #
S1 Enclosure	S5TOU-SEAL-S1-STD
S2 Enclosure	S5TOU-SEAL-S2-STD
S3 Enclosure	S5TOU-SEAL-S3-STD